

O.D.O.T. DISTRICT 2 SURVEY OFFICE (USE ONLY)

PERSONNEL

REFERENCE NO. 31

SHEET 4 OF 14

NOTES RHOADES DATE 6/24/20
 H.C. O'DONNELL WEATHER CLOUDY
 R.C. MAHLER TEMP. 75°

ROUTE US 6
 COUNTY WOOD
 TOWNSHIP FREEDOM
 SECTION 33
 T 5 N R 12 E

DWG BY NIESE PID 101242

TYPE MONUMENT P.K.NAIL

ON SURFACE - ~~BELOW~~ ON

OFFSET CL PAVEMENT 2.8' ~~LT~~ : RT

- TO - EDGE PAVEMENT

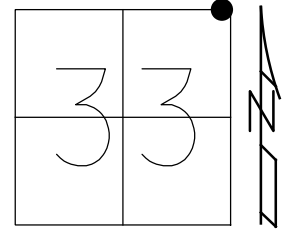
STATION: 1172+43.22

HORZ.DATUM: NAD83 2011

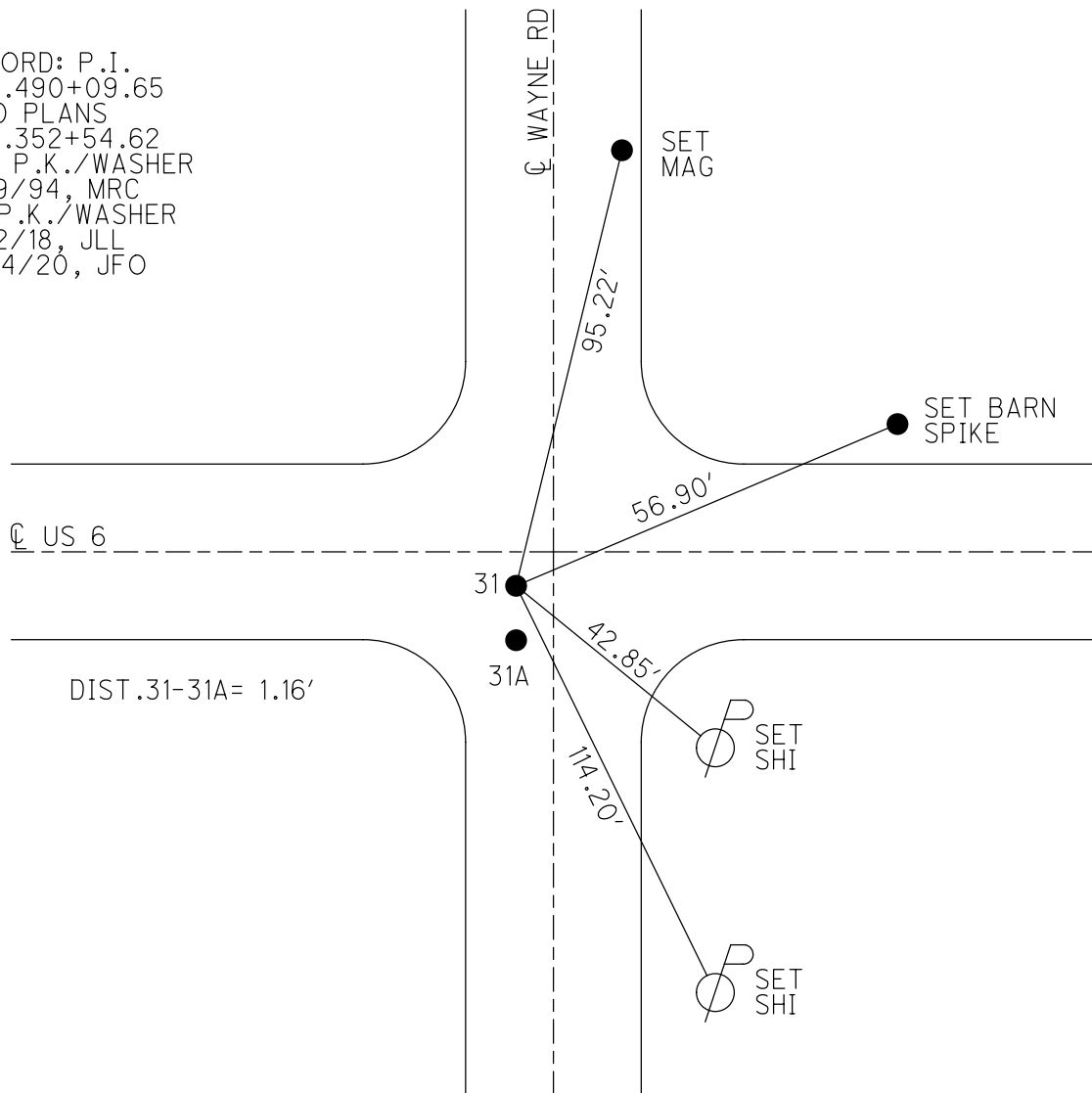
GEOID: NAVD88 2012A

GRID: NORTHING: 616787.633

EASTING: 1700868.267



RECORD: P.I.
 STA.490+09.65
 1940 PLANS
 STA.352+54.62
 SET P.K./WASHER
 7/19/94, MRC
 FD P.K./WASHER
 9/12/18, JLL
 6/24/20, JFO



O.D.O.T. DISTRICT 2 SURVEY OFFICE

PERSONNEL _____

REFERENCE NO. 31

SHEET 5 OF 10

NOTES LOEHRKE

H.C. CANTERBURY

R.C. HEMILLER

VOCAL

DATE 7-19-94

WEATHER _____

TEMP. _____

ROUTE U.S. 6

COUNTY WOOD

TOWNSHIP FREEDOM

SECTION 33

T. 5 N. R. 12 E.

TYPE MONUMENT SM. R.P. SPIKES

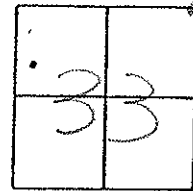
ON SURFACE - BELOW Yes

LEFT - C PAV'T. - RIGHT "A" = 2.8'

TO EDGE PAVEMENT

S.L.M. 1175+03

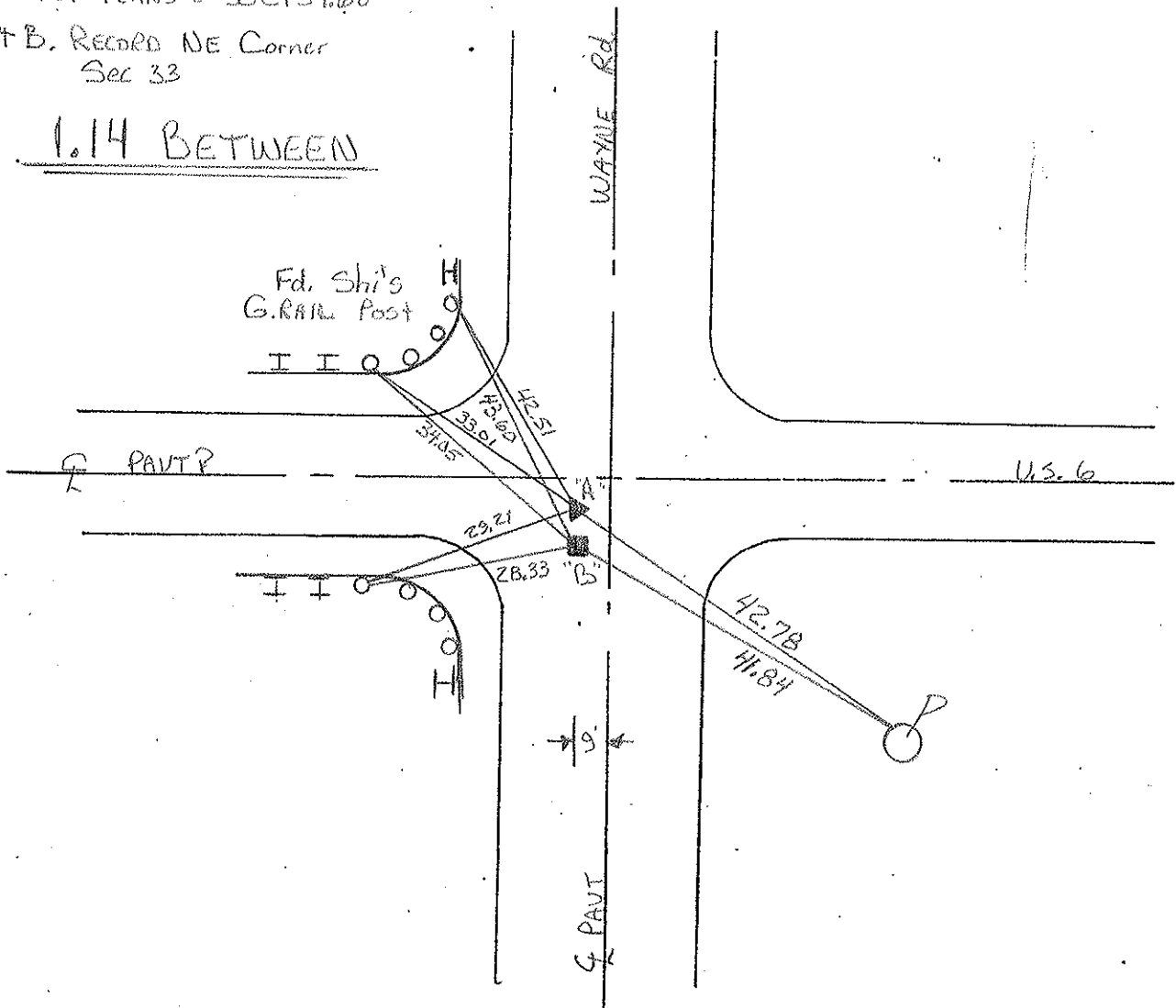
Set P.K./WATER
10-3-94



A. 'A' RECORD P.I.
Sta 490+09.65
1940 PLANS = 352+54.60

A. B. RECORD NE Corner
Sec 33

1.14 BETWEEN



County Wood S.R. 456

Date 3-20-85

Township FREEDOM

Weather CLEAR

Section 33

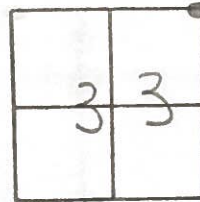
Temp. 40°

T5N, R12E

Personnel Hoffman

LOEHRKE H.C.

BAKHISEL R.C.



#31

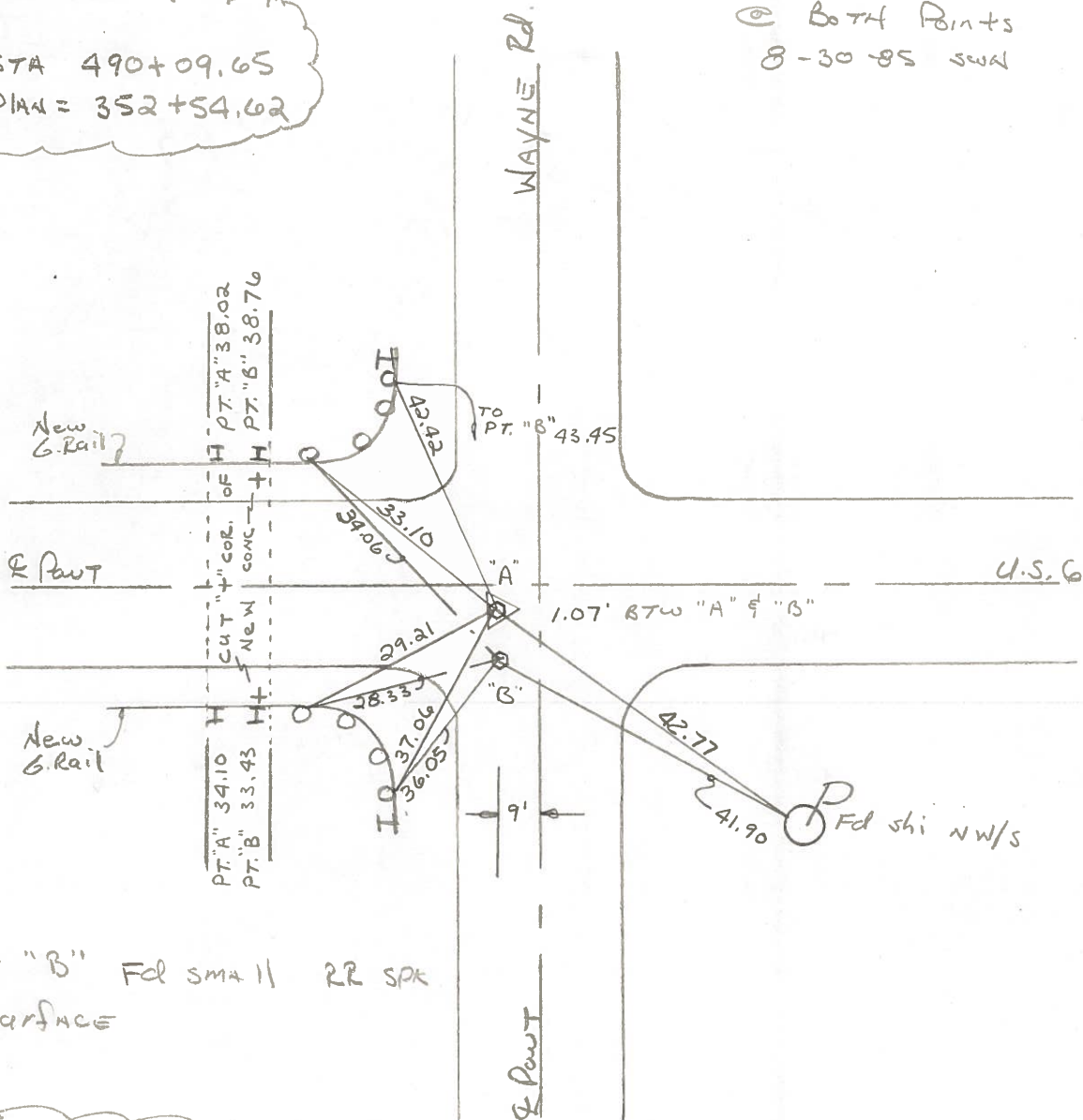
Point "A" Fd small R.R. SPK @ SURFACE
2.8' RT. of & Part U.S.6

SLM 1175+15

Set small R.R. SPIKES
@ BOTH POINTS
8-30-85 SWM

RECORD:

P.I. STA 490+09.65
1940 PLAN = 352+54.62



Point "B" Fd small RR SPK
@ SURFACE

RECORD:

N.E. CORNER Sec. 33

Q.D.O.T. DISTRICT 2 SURVEY OFFICE

Sht. 31 of

County WOOD S.R. 6

Date 5-25-72

Township FREEDOM

Weather CLEAR

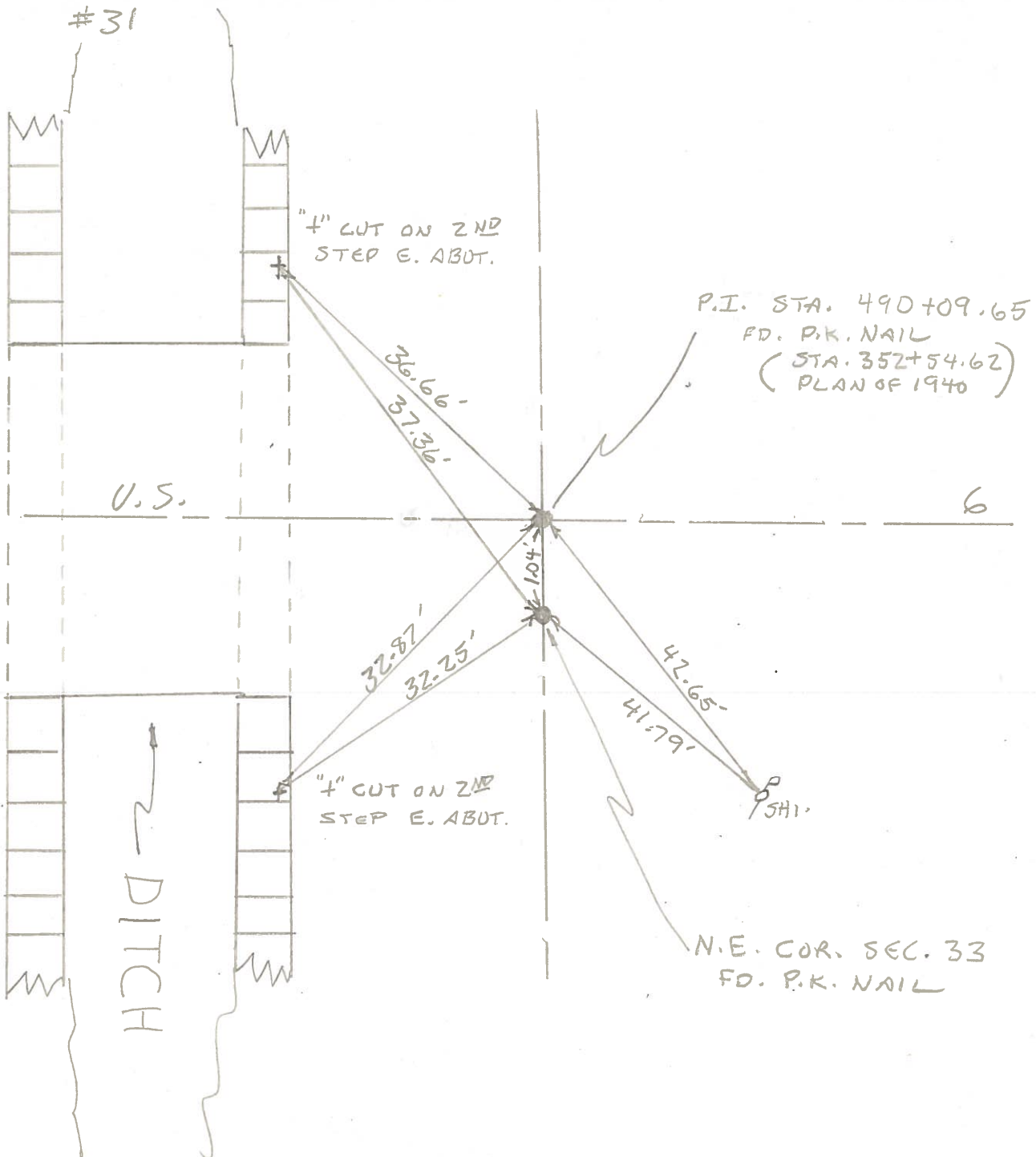
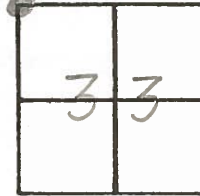
Section 33

Temp. 82°

T5N, R12E

Personnel BURNSIDE

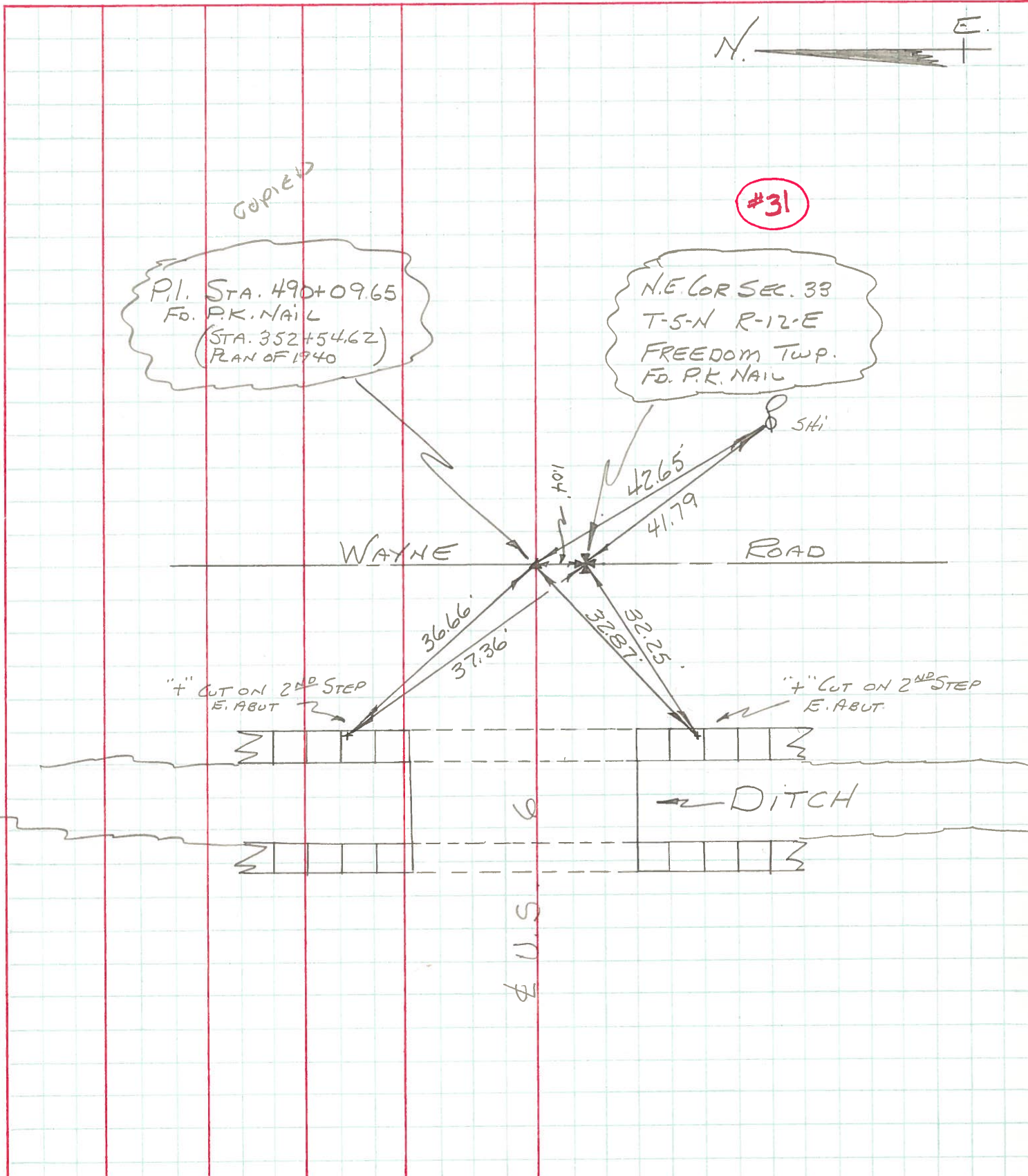
SMITH



PERSONNEL	TITLE	PERSONNEL	TITLE
BURNSIDE			
SMITH			

COUNTY Wood DATE 5-25-72
 S. R. U.S. #6 WEATHER CLEAR
 SEC. WAYNE ROAD TEMP. +82°

DESCRIPTION _____ LEFT _____ CENTER LINE _____ RIGHT _____ JOB NO. _____



PERSONNEL

TITLE

PERSONNEL

TITLE

COUNTY Wood.

DATE May, 15, 1968

Morrison

Bowers

Holcombe

Vern.

S. R. 115#6

WEATHER Pt Cloudy.

SEC.

TEMP. +84°

DESCRIPTION

Ties to Control Points

JOB NO.

LEFT

CENTER LINE

RIGHT

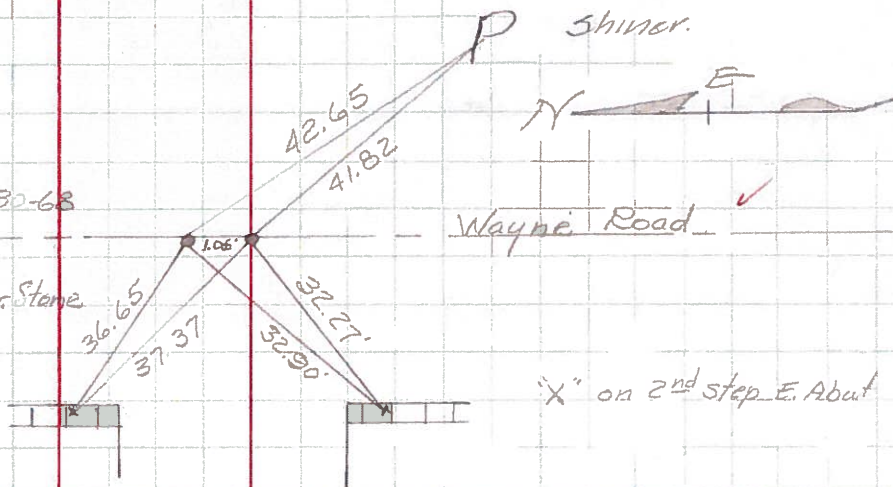
31

Sta. 490+09.65

Set P.K. Nails from ties 4-30-68

P.I. is 106' W. of Cor. Stone
P.K. to the south is over Cor. Stone

"X" on 2nd step E. Abut.



Sta. 476+86.28

P.K. Nail.

Shiner T

36.90'

26.40'

"X" in face of Cons. Cor Post.

26.59'

30-A

Sta. 463+60.82

Set P.K. Nail & Shiner

S. 1/4 Sec. #28

Freedom Twp.

Shiner T

45.92'

37.80'

P Spike

99.85'

30

Sta. 457+38.63

P.K. Nail

(Top of Hill)

Shiner T

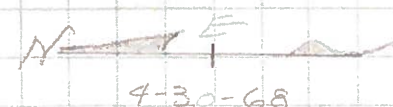
50.02'

75.66' P Shiner

93.03'

91.51'

29-A



PERSONNEL TITLE PERSONNEL TITLE

COUNTY Wood

DATE

S.R. U.S. #6

WEATHER

SEC.

TEMP.

DESCRIPTION

LEFT

CENTER LINE

RIGHT

JOB NO.

Sta. 463+60.82 Shiner over mon. 5/4 post sec. 28		5-4-60	10" walnut NE.	50.62
			12" wild cherry NW.	34.42
			T.P. SE.	38.23
(30)	#53-A		Spk. P. Pole S	37.80
			Shiner T. Pole N.W.	45.92
			N.E. cor Conc. Foundation of Ho SW	99.85
Sta. 476+86.28 P.K. nail OK 12-13-57		5-4-60	C.B. N.N.E. Gone,	23.35
			B.R. Post SSE. Gone,	27.0
			X in Conc. Post S.	26.40
			Shiner in P.P.S.S.W.	26.59 26.55
			Shiner in T.P. N.	36.90
(30-A)	#54			
Sta. 490+09.65 Cor. Stone. P.I. E.P. spike is 1.06' N. set H.K. nails from 12-30-57 4-30-68		5-4-60	X N. end E. abut.	37.37
			X S. end E. abut.	32.27
			Shiner in T.P. SE.	41.82
WAYNE ROAD	#55		X N. end E. abut.	36.65
(31)			X S. end E. abut.	32.96
			Shiner in T.P. SE.	42.65
P.I. Sta. 358+85.30 Iron pin (Did not find 12-30-57) (1st P.I. EAST OF) WAYNE ROAD		5-4-60	S.W. Cor. Garage E.	109.6
			P.P. E.N.E.	40.95
			S.E. Cor. tool shed N.E.	50.5
			S.W. Cor. tool shed N.N.E.	35.0
			S.W. Cor. of W. side of Barn N.	115.7
			Pole N.N.W.	10.7
			X in N.E. Cor. of N. Wall. of C.B. SW.	38.1
(32)	#56			