

O.D.O.T. DISTRICT 2 SURVEY OFFICE (USE ONLY)

PERSONNEL

REFERENCE NO. 36

SHEET 34 OF 34

NOTES AUBLE  
 H.C. AUBLE  
 R.C. RHOADES  
ASTON

DATE 7/31/23  
 WEATHER FAIR  
 TEMP. 75°

ROUTE US 6  
 COUNTY WOOD  
 TOWNSHIP FREEDOM  
 SECTION 36

DWG BY ASTON PID R/W

T 5 N R 12 E

TYPE MONUMENT MAG/WASHER

ON SURFACE - ~~BELOW~~ ON

OFFSET CL PAVEMENT 0.5' ~~±~~ : RT

12.0' TO RT EDGE PAVEMENT

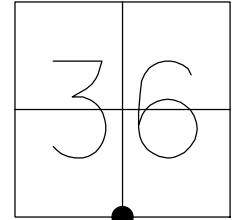
STATION: 1316+81.87

HORZ.DATUM: NAD83 2011

GEOID: NAVD88 2018

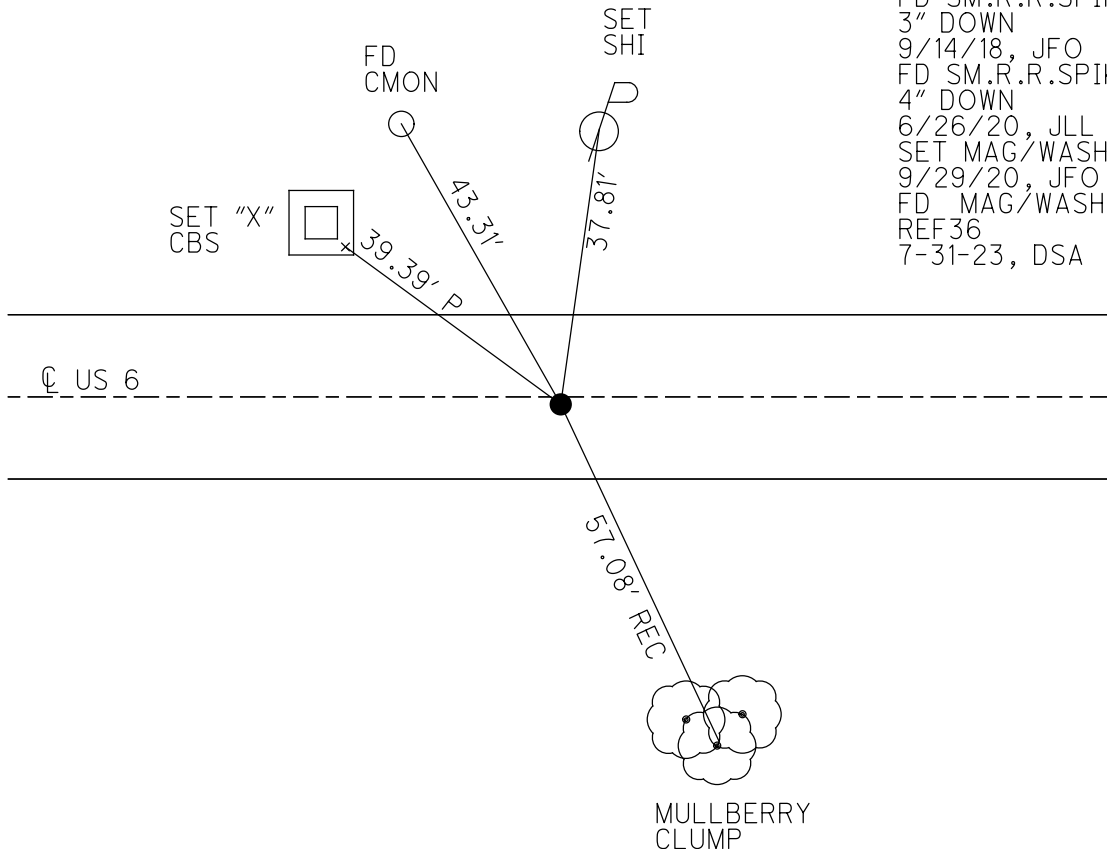
GRID: NORTHING: 611451.329

EASTING: 1713984.056



WOOD LDP:  
 N: 434106.000  
 E: 225305.585

RECORD:  
 FD SM.R.R.SPIKE  
 7/19/94, CL  
 SET P.K./WASHER  
 10/3/94, CL  
 FD P.K./WASHER  
 11/29/12, SAH  
 FD SM.R.R.SPIKE  
 3" DOWN  
 9/14/18, JFO  
 FD SM.R.R.SPIKE  
 4" DOWN  
 6/26/20, JLL  
 SET MAG/WASHER  
 9/29/20, JFO  
 FD MAG/WASHER  
 REF36  
 7-31-23, DSA



O.D.O.T. DISTRICT 2 SURVEY OFFICE (USE ONLY)

PERSONNEL

REFERENCE NO. 36

SHEET 13 OF 14

NOTES RHOADES DATE 6/26/20  
 H.C. LEU WEATHER SUNNY  
 R.C. GARRETT TEMP. 70°  
MAHLER

ROUTE US 6  
 COUNTY WOOD  
 TOWNSHIP FREEDOM  
 SECTION 36

DWG BY NIESE PID 101242

T 5 N R 12 E

TYPE MONUMENT SM.R.R.SPIKE

ON SURFACE - ~~BELOW~~ 4"

OFFSET 0.5' LT : RT

12.0' TO RT EDGE PAVEMENT

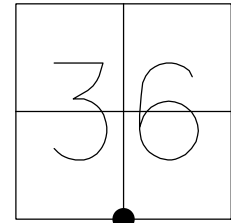
STATION: 1316+81.87

HORIZ.DATUM: NAD83 2011

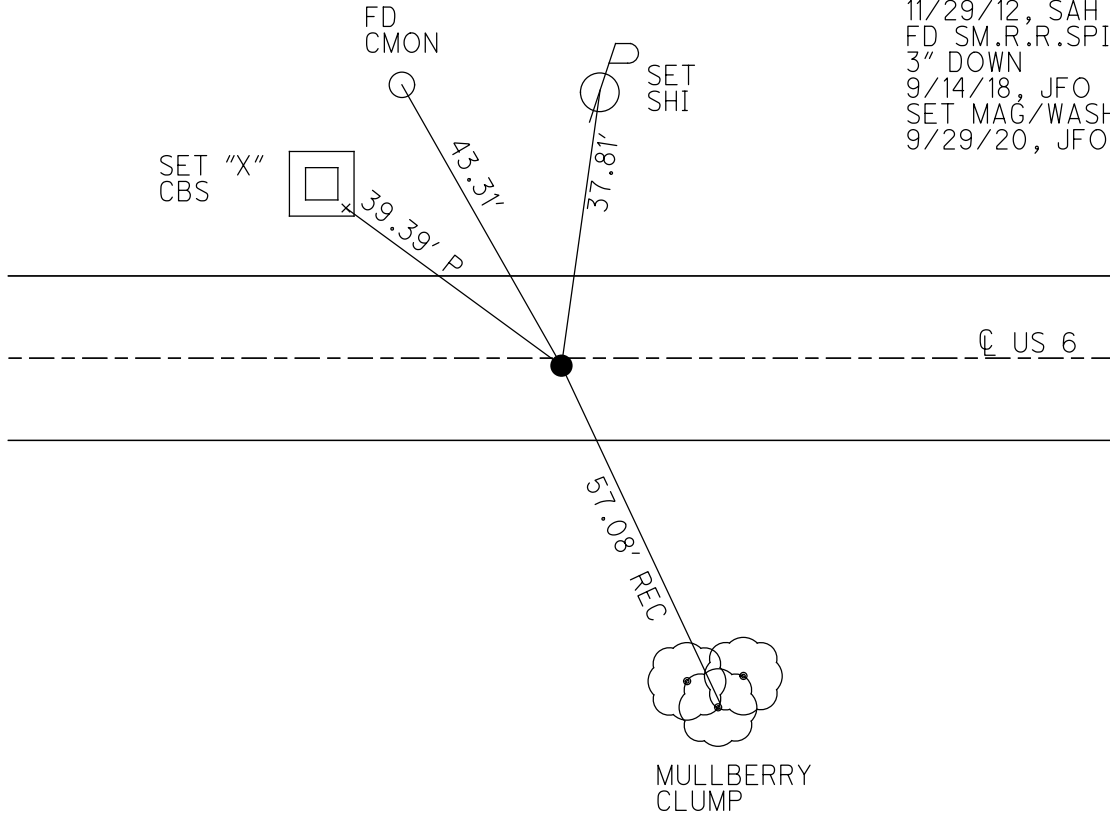
GEOID: NAVD88 2012A

GRID: NORTHING: 611451.329

EASTING: 1713984.056



RECORD:  
 FD SM.R.R.SPIKE  
 7/19/94, CL  
 SET P.K./WASHER  
 10/3/94, CL  
 FD P.K./WASHER  
 11/29/12, SAH  
 FD SM.R.R.SPIKE  
 3" DOWN  
 9/14/18, JFO  
 SET MAG/WASHER  
 9/29/20, JFO

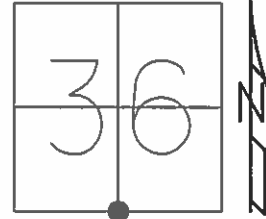


O.D.O.T. DISTRICT 2 SURVEY OFFICE (USE ONLY)

PERSONNEL \_\_\_\_\_ REFERENCE NO. 36 SHEET 1 OF 1  
NOTES LOEHRKE DATE 7/19/94 ROUTE US 6  
H.C. CANTERBURY WEATHER FAIR COUNTY WOOD  
R.C. VOGEL TEMP. \_\_\_\_\_ TOWNSHIP FREEDOM  
SECTION 36  
T 5 N R 12 E

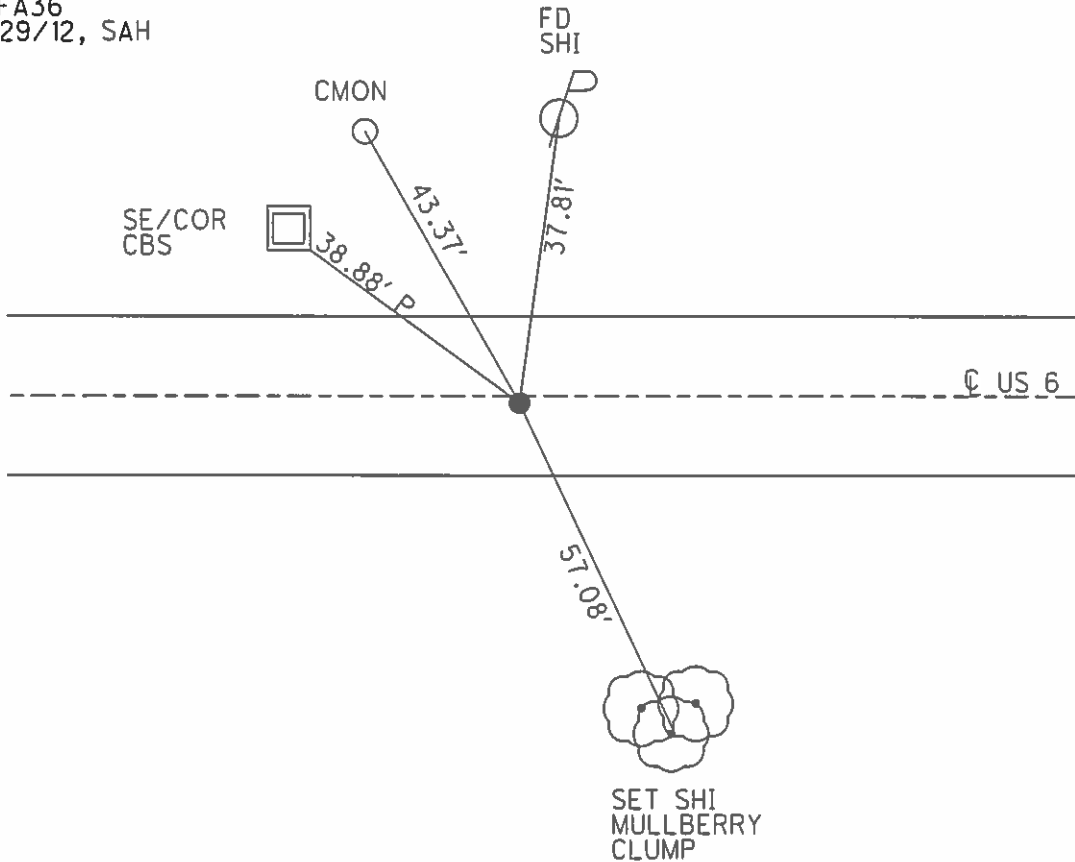
TYPE MONUMENT SM.R.R.SPIKE  
ON SURFACE - ~~BELOW~~ ON \_\_\_\_\_  
~~LEFT~~ - CL PAV'T - RIGHT 0.5'  
12' TO RT EDGE PAVEMENT  
S.L.M. 1319+82

Grid: Northing: 611451.319 Easting: 1713983.997



RECORD:  
SET P.K./WASHER  
10/3/94, CL

FD P.K./WASHER  
REFA36  
11/29/12, SAH



# O.D.O.T. DISTRICT 2 SURVEY OFFICE

PERSONNEL \_\_\_\_\_

REFERENCE NO. 36

SHEET 10 OF 10

NOTES LOEHRKE

H.C. CANTERBURY

R.C. VOGEL

DATE 7-19-94

WEATHER FAIR

TEMP. \_\_\_\_\_

ROUTE U.S. 6

COUNTY WOOD

TOWNSHIP FREEDOM

SECTION 36

T 5 N R 12 E

TYPE MONUMENT S.M. R.R. SPIKE

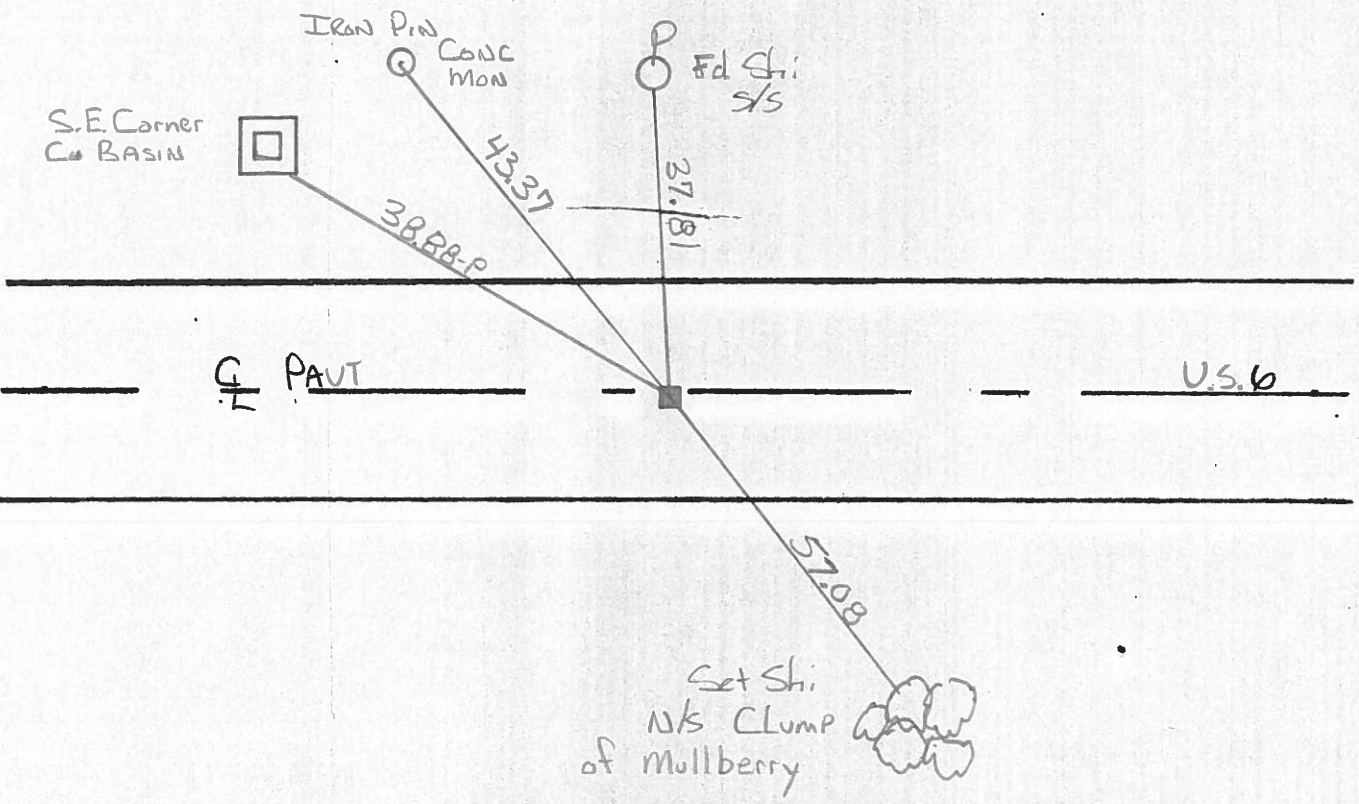
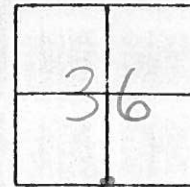
Set P.K./WASHER  
10-3-94

ON SURFACE - ~~BELOW~~ yes

LEFT- & PAV'T. - RIGHT 0.5

12' TO 0+ EDGE PAVEMENT

S.L.M. 1319+82



County Wood ~~S.R.~~ US6

Date 3-20-85

Township FREEDOM

Weather CLEAR

Section 36

Temp. 45°

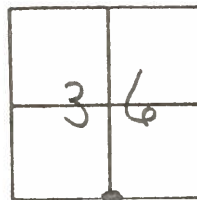
TSN, R12E

Personnel Hoffman

LOGHRKE H.C.

BARNHISEL R.C.

# 36

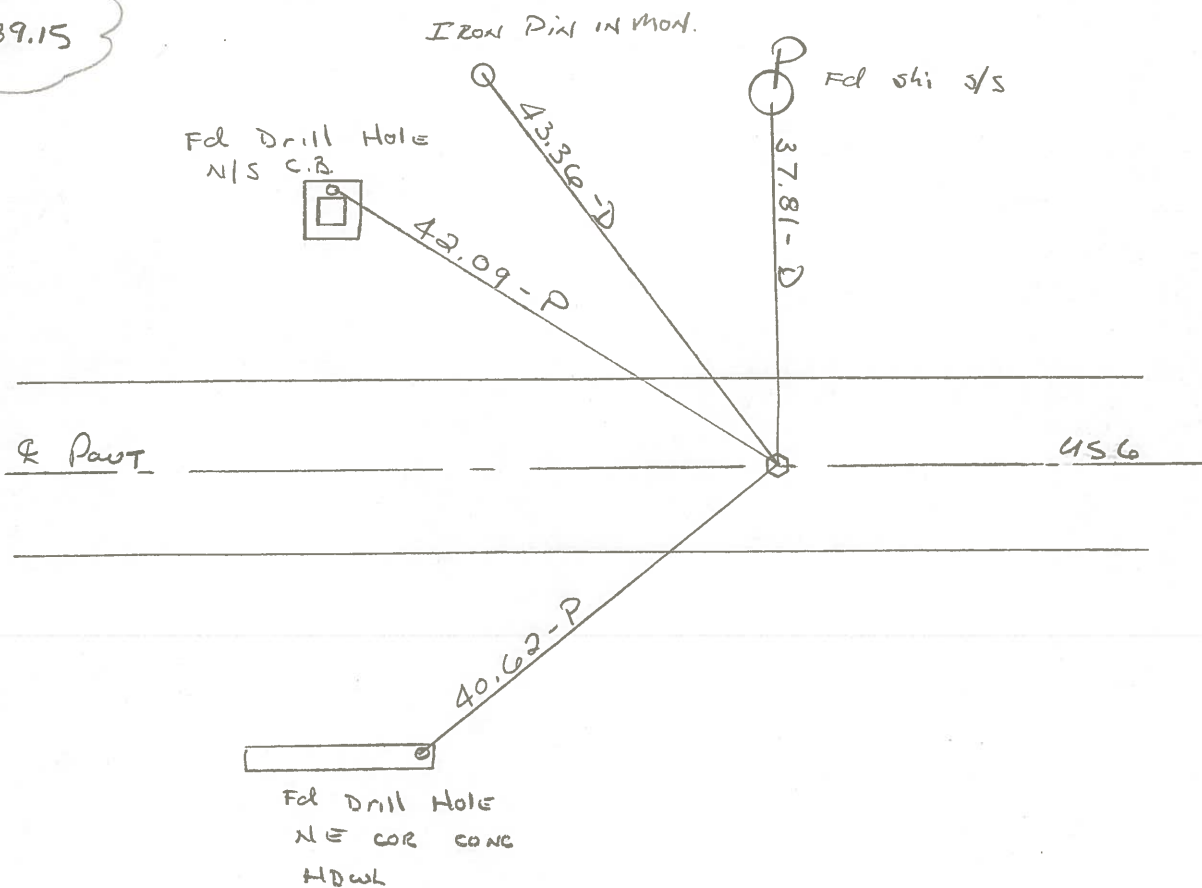


Fd small R.R. SAK @ surface  
on & part  
10.7' to RT. EP.

SLM 1319 + 56

Set small R.R. SAK  
9-3-85 SWK

Record:  
496+89.15



County Wood S.R. U.S. #6

Date 12/18/80

Township FREEDOM

Weather OVERCAST

Section 36

Temp. 38°

T5N, R12E

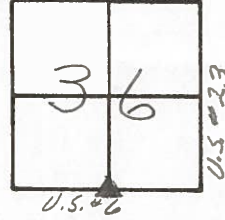
Personnel CRONIN

RIPPLE

GEYMAN

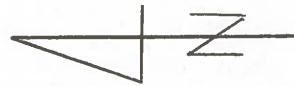
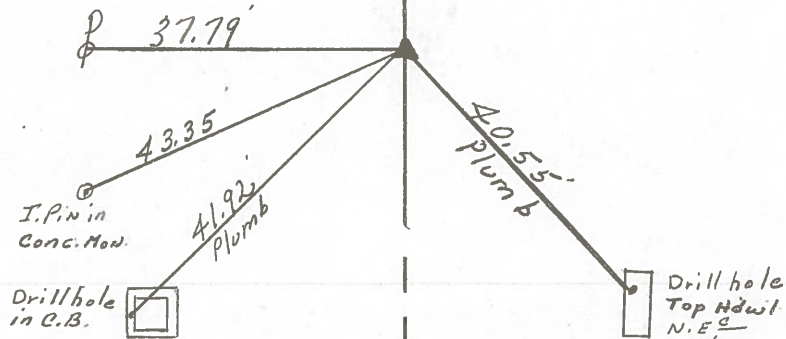
SCHNEIDER

BARBOUR



#36

496 + 89.15  
Found mine spike  
on surface

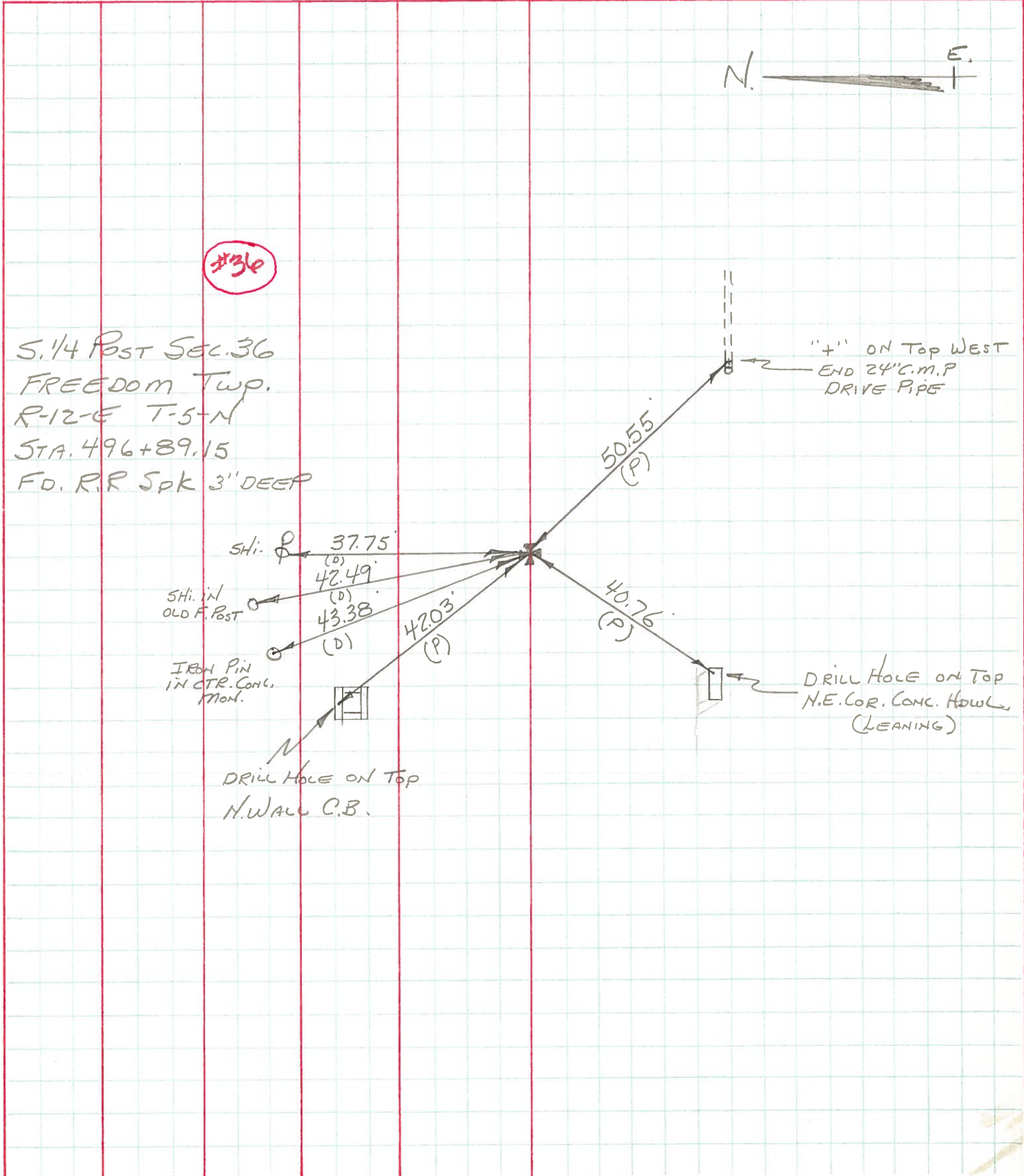


U.S. #6

PERSONNEL	TITLE	PERSONNEL	TITLE	COUNTY	DATE
BURNSIDE				Wood	5-26-72
SMITH				S. R. U.S. #6	WEATHER CLEAR
BOWERS				SEC.	TEMP. +83°

DESCRIPTION: 5.1/4 Post SEC. 36 JOB NO. \_\_\_\_\_

LEFT CENTER LINE RIGHT



PERSONNEL TITLE PERSONNEL TITLE

COUNTY Wood DATE OK 12-30-57

S.R. U.S. #6 WEATHER

SEC. TEMP.

DESCRIPTION LEFT CENTER LINE RIGHT JOB NO.

Sta. 496+89.15		5-4-60	X in Conc. hdwl. SW.	40.70'
P.P. spike	Found Spk Notices -		Shiner in 36' Elm S.S.E.	<del>40.54'</del> 45.78
(36)	5-1-68		Shiner in Cor. post N.	39.78
#60				39.95

Sta. 523+30.92			gone {	Mon. N.E.	35.21'
P.P. Spk. intersection				Mon. S.E.	53.36'
S.H. 278 & S.H. 529		5-4-60	X on N.E. cor. sign post base SW.	55.00	
	#61		X on S.E. cor. pump island N.W.	69.50	
			Shiner in P.P. SE.	87.00	
			X-in N.E. cor. old pump island base S.W.	74.80	