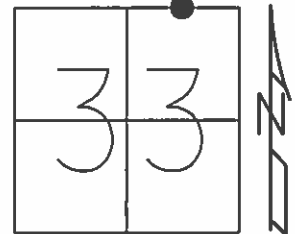


O.D.O.T. DISTRICT 2 SURVEY OFFICE (USE ONLY)

PERSONNEL _____ REFERENCE NO. 23 A SHEET 21 OF 26
 NOTES HOFFMAN DATE 6/17/87 ROUTE SR 18
 H.C. LOEHRKE WEATHER CLEAR COUNTY WOOD
 R.C. BARNHISEL TEMP. 80° TOWNSHIP HENRY
 _____ SOCKMAN _____ SECTION 33
 _____ T 3 N R 10 E

TYPE MONUMENT R.R.SPIKE
 ON SURFACE - ~~BELOW~~ ON _____
~~LEFT~~ - CL PAV'T - RIGHT 1.3'
7.0' TO RT EDGE PAVEMENT
 S.L.M. 541+76.39

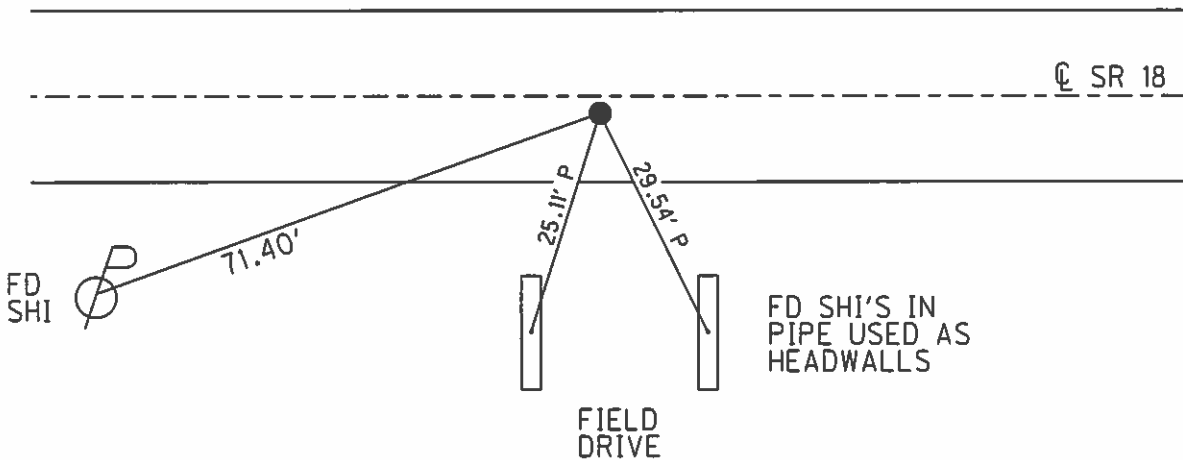


Grid: Northing: 554770.338 Easting: 1634833.748

FD R.R.SPIKE
 AT SURFACE
 6/17/87, CL

SET P.K./WASHER
 7/21/87, CL

FD P.K./WASHER
 6/16/10
 GPS, SVA23
 6/17/10, MC



O.D.O.T. DISTRICT 2 SURVEY OFFICE (USE ONLY)

PERSONNEL _____ REFERENCE NO. 24 SHEET 22 OF 26
 NOTES HOFFMAN DATE 6/17/87 ROUTE SR 18
 H.C. LOEHRKE WEATHER CLEAR COUNTY WOOD
 R.C. BARNHISEL TEMP. 80° TOWNSHIP HENRY
SOCKMAN SECTION 33
 T 3 N R 10 E

TYPE MONUMENT SM.R.R.SPIKE

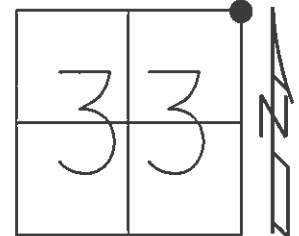
ON SURFACE - ~~BELOW~~ ON _____

~~LEFT~~ - CL PAV'T - RIGHT 2.8', 5' E. OF PAV'T SOUTH

- TO - EDGE PAVEMENT

S.L.M. 555+07.50

Grid: Northing: 554763.684 Easting: 1636164.845



FD SM.R.R.SPIKE
AT SURFACE
6/17/87, CL

SET P.K./WASHER
7/21/87, CL

FD SM.R.R.SPIKE
6/16/10
GPS, SV24
6/17/10, MC
FINAL GPS, REF24
1/31/12, SAH

CL OLD SR 18

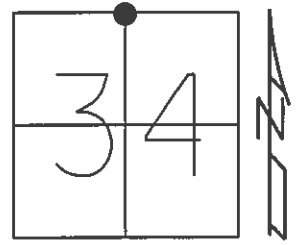
ALL TIES DESTROYED
BY CONSTRUCTION

CL LIBERTY HIGH OVERPASS

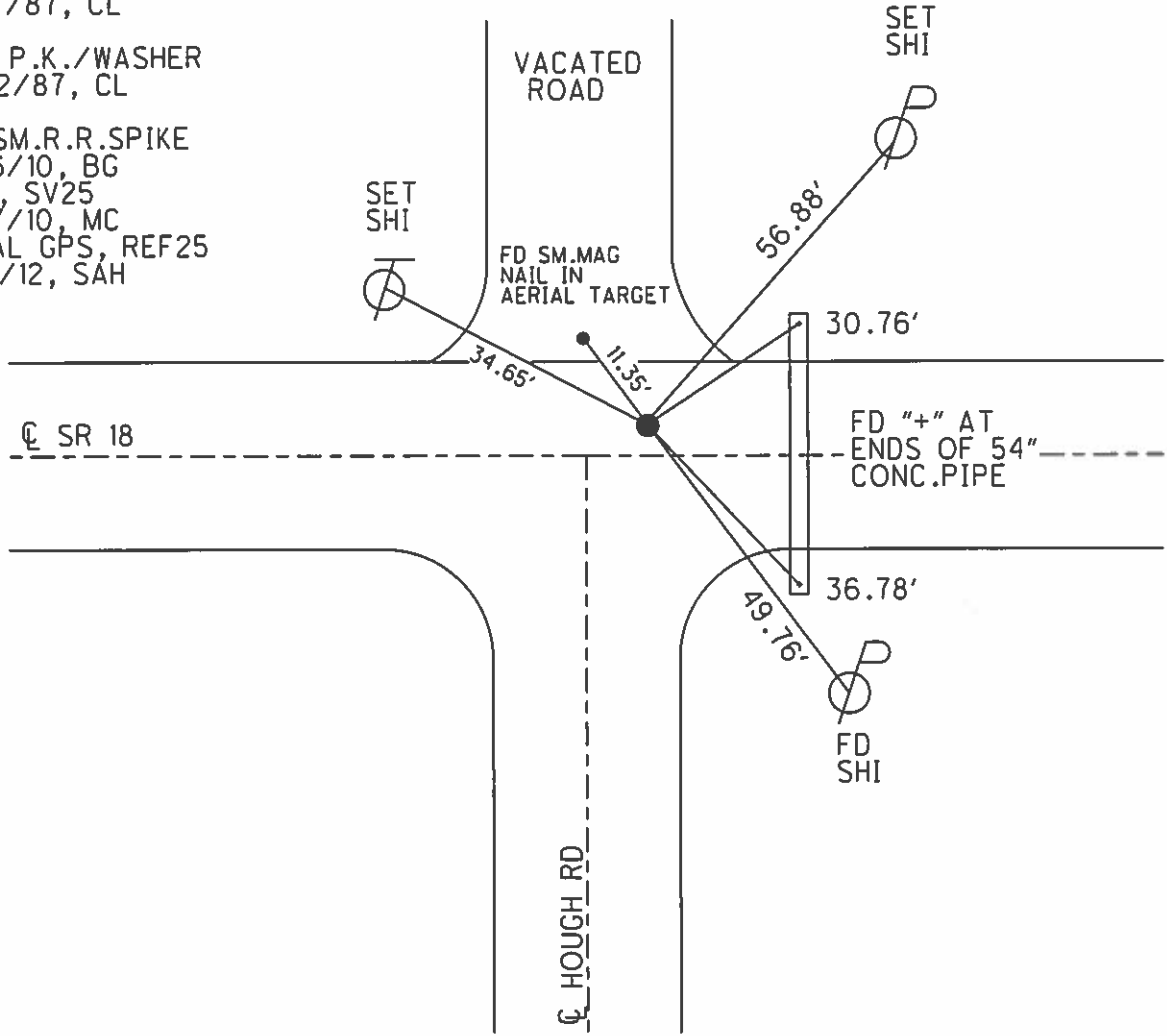
O.D.O.T. DISTRICT 2 SURVEY OFFICE (USE ONLY)

PERSONNEL _____ REFERENCE NO. 25 SHEET 23 OF 26
 NOTES CANTERBURY DATE 6/3/11 ROUTE SR 18
 H.C. HUSS WEATHER CLEAR COUNTY WOOD
 R.C. HARBAUGH TEMP. 63° TOWNSHIP HENRY
 SECTION 34
 T 3 N R 10 E

TYPE MONUMENT SM.R.R.SPIKE
~~ON SURFACE~~ - BELOW 0.2'
 LEFT - ☉ PAV'T - ~~RIGHT~~ 2.2'
8.6' TO LT EDGE PAVEMENT
 S.L.M. 581+53.63
 Grid: Northing: 554709.109 Easting: 1638810.408



FD SM.R.R.SPIKE
 AT SURFACE
 6/17/87, CL
 SET P.K./WASHER
 7/22/87, CL
 FD SM.R.R.SPIKE
 6/16/10, BG
 GPS, SV25
 6/17/10, MC
 FINAL GPS, REF25
 1/31/12, SAH



O.D.O.T. DISTRICT 2 SURVEY OFFICE (USE ONLY)

PERSONNEL _____

REFERENCE NO. 26

SHEET 24 OF 26

NOTES HOMAN

DATE 8/4/14

ROUTE SR 18

H.C. LEU

WEATHER SUNNY

COUNTY WOOD

R.C. THOMAS

TEMP. 70°

TOWNSHIP HENRY

SECTION 35

DWG BY MILLER

PID 93417

T 3 N R 10 E

TYPE MONUMENT MAG/WASHER

ON SURFACE - ~~BELOW~~ ON _____

OFFSET \varnothing PAVEMENT 0.4' LT : ~~RT~~

3' W TO N EDGE PAVEMENT

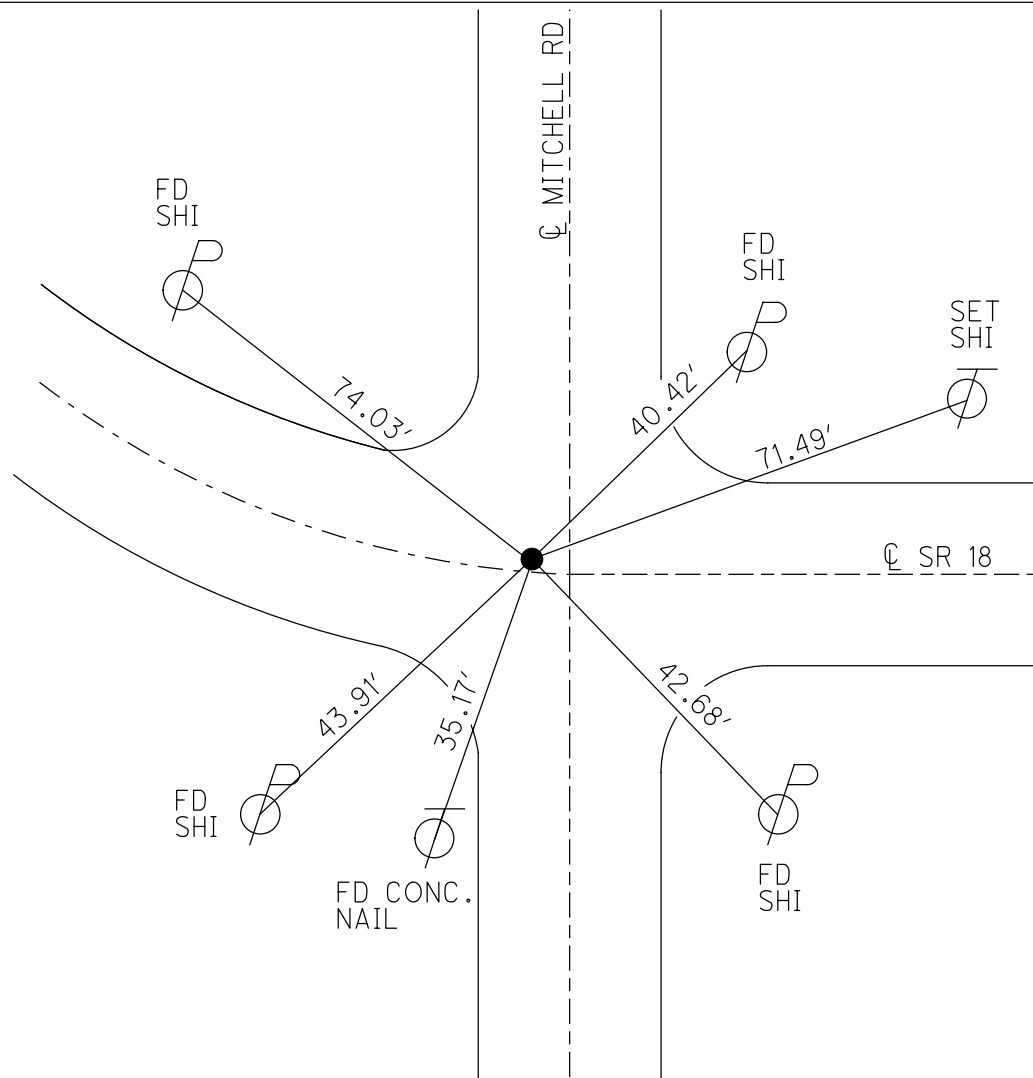
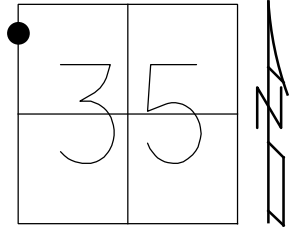
STATION: 611+42.40

HORIZ.DATUM: NAD83 (2011)

GEOID: 2012A

GRID: NORTHING: 553999.087

EASTING: 1641462.500



RECORD:
 STA. 611+42.40
 W.CORP.LINE FOR
 NORTH BALTIMORE
 FD R.R.SPIKE
 3" BELOW
 7/08/02, DH
 SET P.K./WASHER
 2/10/03, DH
 FD MAG/WASHER
 6/16/10, BG
 SV26
 6/17/10, MC
 FD MAG/WASHER
 REF26
 8-4-14, DH
 SET MAG/WASHER
 COREF26
 9-2-16, DCH

O.D.O.T. DISTRICT 2 SURVEY OFFICE (USE ONLY)

PERSONNEL

REFERENCE NO. 26 A

SHEET 25 OF 26

NOTES HOMAN

DATE 8/4/14

ROUTE SR 18

H.C. LEU

WEATHER SUNNY

COUNTY WOOD

R.C. THOMAS

TEMP. 70°

TOWNSHIP HENRY

SECTION 35

DWG BY MILLER

PID 93417

T 3 N R 10 E

TYPE MONUMENT "+" CUT

ON SURFACE - ~~BELOW~~ ON

OFFSET ☉ PAVEMENT ON LT : RT

- TO - EDGE PAVEMENT 1' RT OF ☉ FRAZIER ST

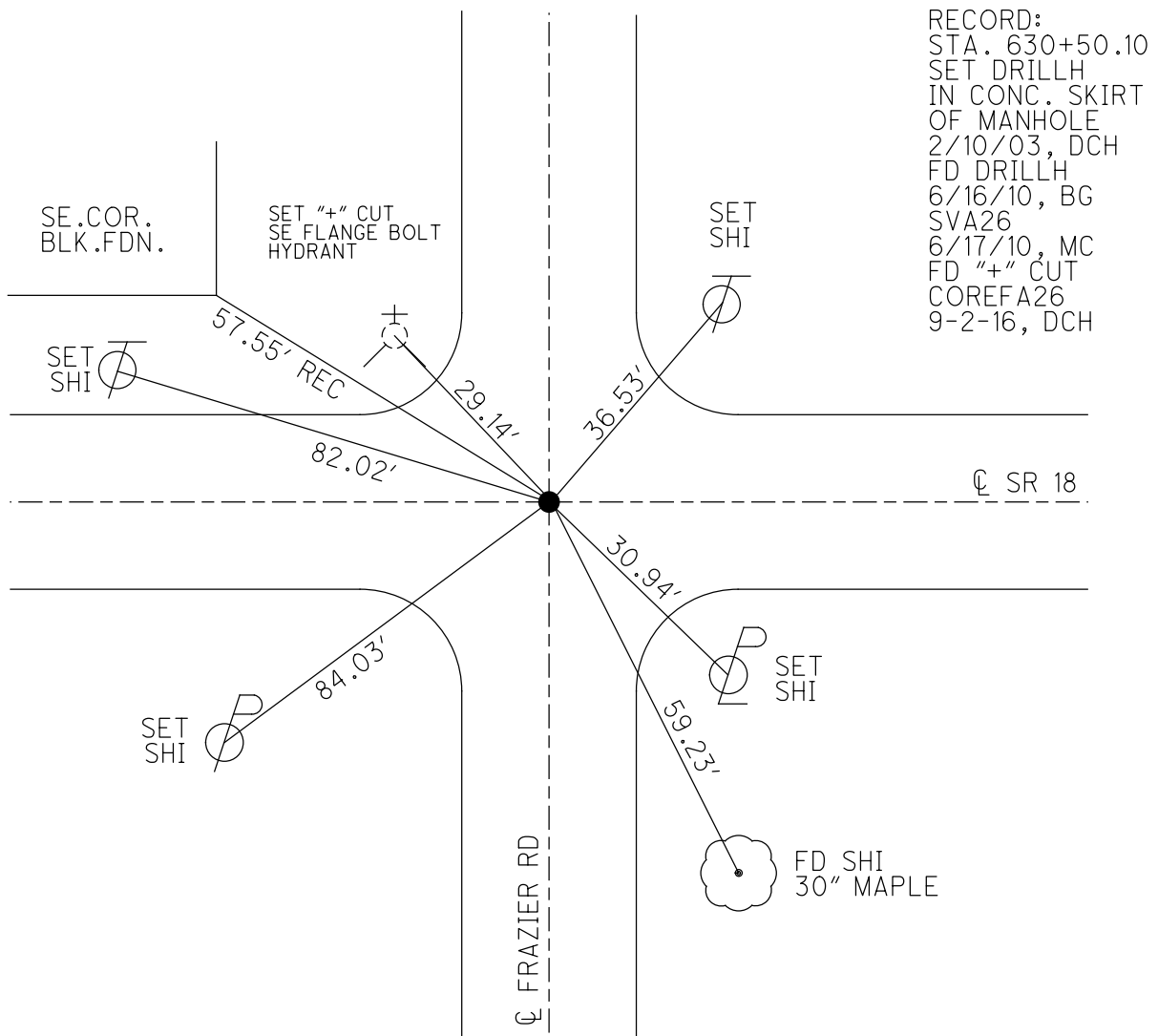
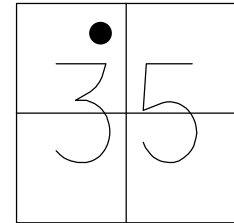
STATION: 630+51.06

HORIZ.DATUM: NAD83 (2011)

GEOID: 2012A

GRID: NORTHING: 553942.914

EASTING: 1643370.336



RECORD:
 STA. 630+50.10
 SET DRILLH
 IN CONC. SKIRT
 OF MANHOLE
 2/10/03, DCH
 FD DRILLH
 6/16/10, BG
 SVA26
 6/17/10, MC
 FD "+" CUT
 COREFA26
 9-2-16, DCH

O.D.O.T. DISTRICT 2 SURVEY OFFICE (USE ONLY)

PERSONNEL

REFERENCE NO. 27

SHEET 26 OF 26

NOTES HOMAN

DATE 8/4/14

ROUTE SR 18

H.C. LUE

WEATHER SUNNY

COUNTY WOOD

R.C. THOMAS

TEMP. 75°

TOWNSHIP HENRY

SECTION 35

DWG BY MILLER

PID 93417

T 3 N R 10 E

TYPE MONUMENT MONBOX

ON SURFACE - ~~BELOW~~ ON

OFFSET Q PAVEMENT ON LT : RT

- TO - EDGE PAVEMENT

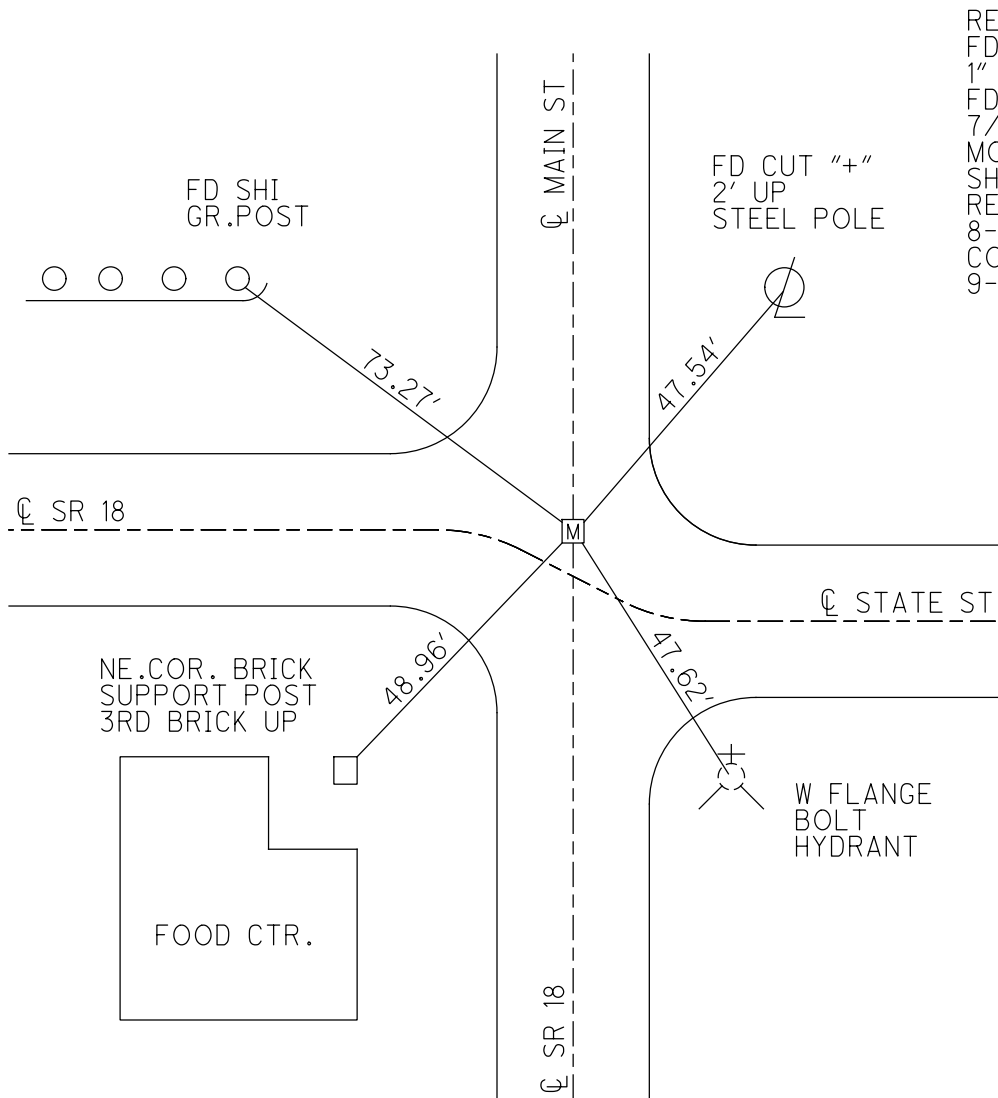
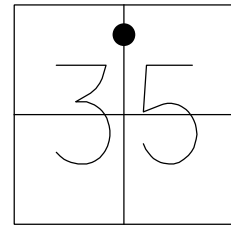
STATION: 638+41.29

HORZ.DATUM: NAD83 (2011)

GEOID: 2012A

GRID: NORTHING: 553919.538

EASTING: 1644160.254



RECORD:
 FD BRASS PLATE
 1" DEEP
 FD MONBOX
 7/8/02, DCH
 MONBOX DID NOT OPEN
 SHOT CENTER OF LID
 REF27
 8-4-14, DCH
 CORED27
 9-2-16, DCH

O.D.O.T. DISTRICT 2 SURVEY OFFICE (USE ONLY)

PERSONNEL

REFERENCE NO. 27 A

SHEET 1 OF 19

NOTES HOMAN

DATE 8/4/14

ROUTE SR 18

H.C. LEU

WEATHER SUNNY

COUNTY WOOD

R.C. THOMAS

TEMP. 75°

TOWNSHIP HENRY

DWG BY MILLER

PID 93417

SECTION 35

T 3 N R 10 E

TYPE MONUMENT MAG/WASHER

ON SURFACE - ~~BELOW~~ ON

OFFSET Q PAVEMENT ON LT : RT

- TO - EDGE PAVEMENT

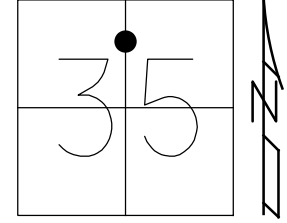
STATION: 645+00.42

HORZ. DATUM: NAD83 (2011)

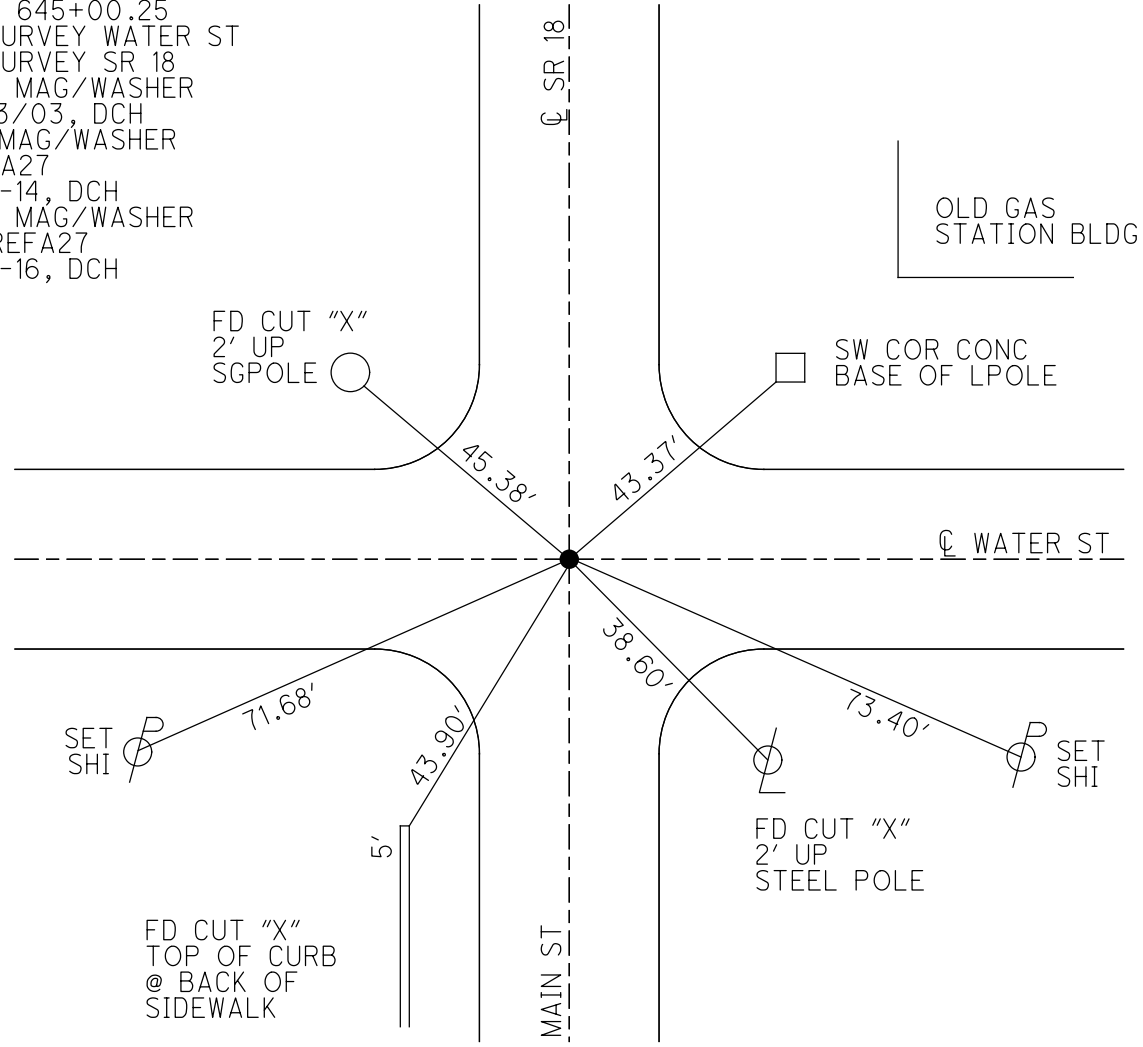
GEOID: 2012A

GRID: NORTHING: 553260.497

EASTING: 1644153.153



RECORD:
 STA 645+00.25
 Q SURVEY WATER ST
 Q SURVEY SR 18
 SET MAG/WASHER
 2/13/03, DCH
 FD MAG/WASHER
 REFA27
 8-4-14, DCH
 SET MAG/WASHER
 COREFA27
 9-2-16, DCH



O.D.O.T. DISTRICT 2 SURVEY OFFICE (USE ONLY)

PERSONNEL

REFERENCE NO. 27 B

SHEET 2 OF 19

NOTES HOMAN DATE 8/4/14
 H.C. LEU WEATHER SUNNY
 R.C. THOMAS TEMP. 75°

ROUTE SR 18
 COUNTY WOOD
 TOWNSHIP HENRY
 SECTION 35

DWG BY MILLER PID 93417

T 3 N R 10 E

TYPE MONUMENT MAG/WASHER

ON SURFACE - ~~BELOW~~ ON

OFFSET ☉ PAVEMENT ON LT : RT

- TO - EDGE PAVEMENT

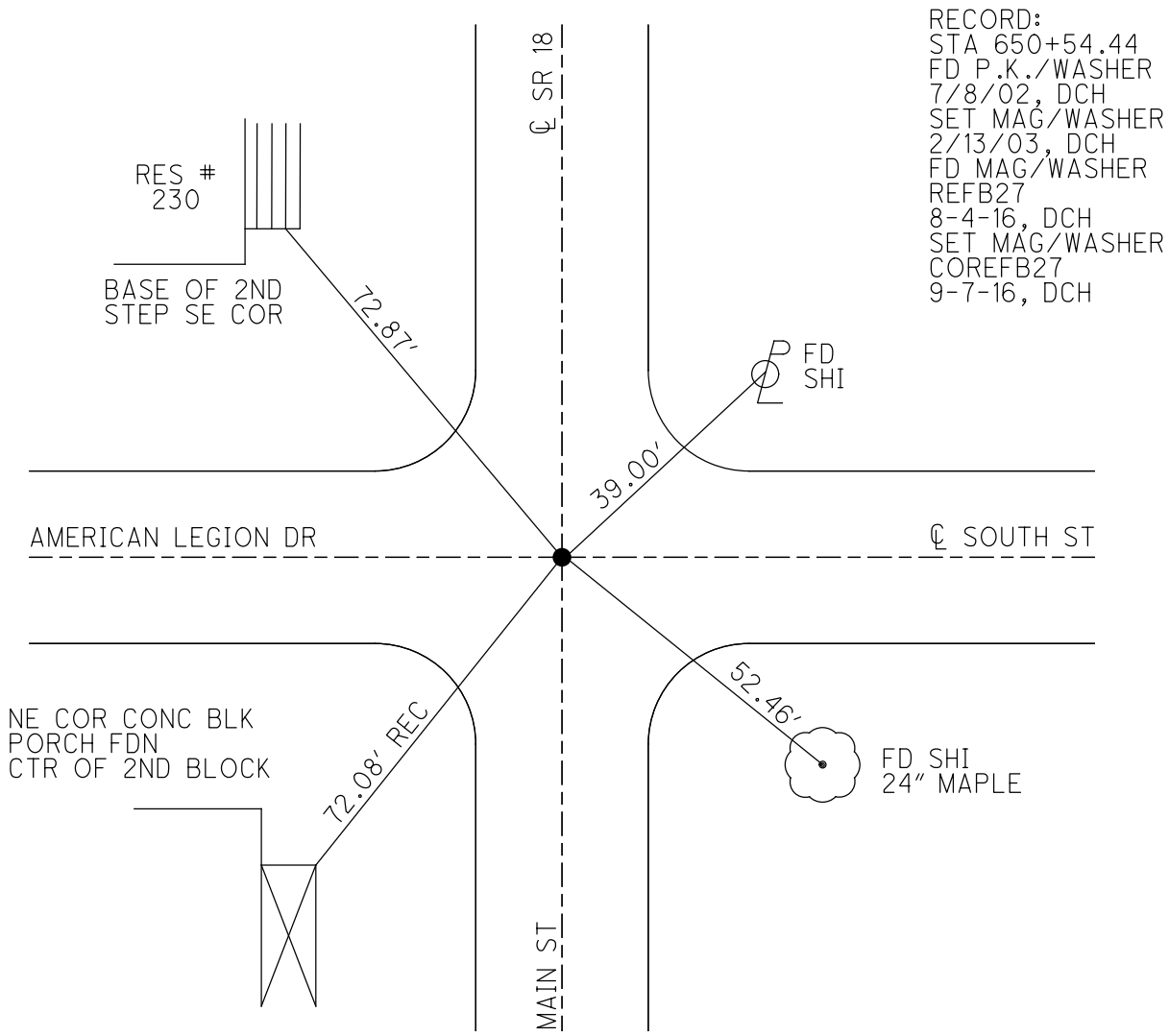
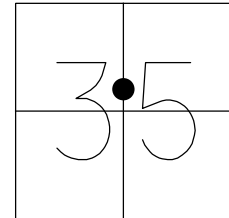
STATION: 650+54.71

HORZ. DATUM: NAD83 (2011)

GEOID: 2012A

GRID: NORTHING: 552706.288

EASTING: 1644147.121



RECORD:
 STA 650+54.44
 FD P.K./WASHER
 7/8/02, DCH
 SET MAG/WASHER
 2/13/03, DCH
 FD MAG/WASHER
 REFB27
 8-4-16, DCH
 SET MAG/WASHER
 COREFB27
 9-7-16, DCH

O.D.O.T. DISTRICT 2 SURVEY OFFICE (USE ONLY)

PERSONNEL

REFERENCE NO. 27 C

SHEET 3 OF 19

NOTES HOMAN DATE 8/4/14
 H.C. LEU WEATHER SUNNY
 R.C. THOMAS TEMP. 75°

ROUTE SR 18
 COUNTY WOOD
 TOWNSHIP HENRY
 SECTION 35

DWG BY MILLER PID 93417

T 3 N R 10 E

TYPE MONUMENT MAG/WASHER

ON SURFACE - ~~BELOW~~ ON

OFFSET \varnothing PAVEMENT 5' ~~LT~~ : RT

- TO - EDGE PAVEMENT

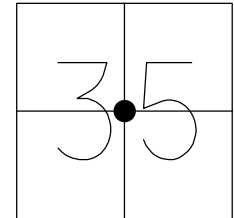
STATION: 658+15.66

HORZ. DATUM: NAD83 (2011)

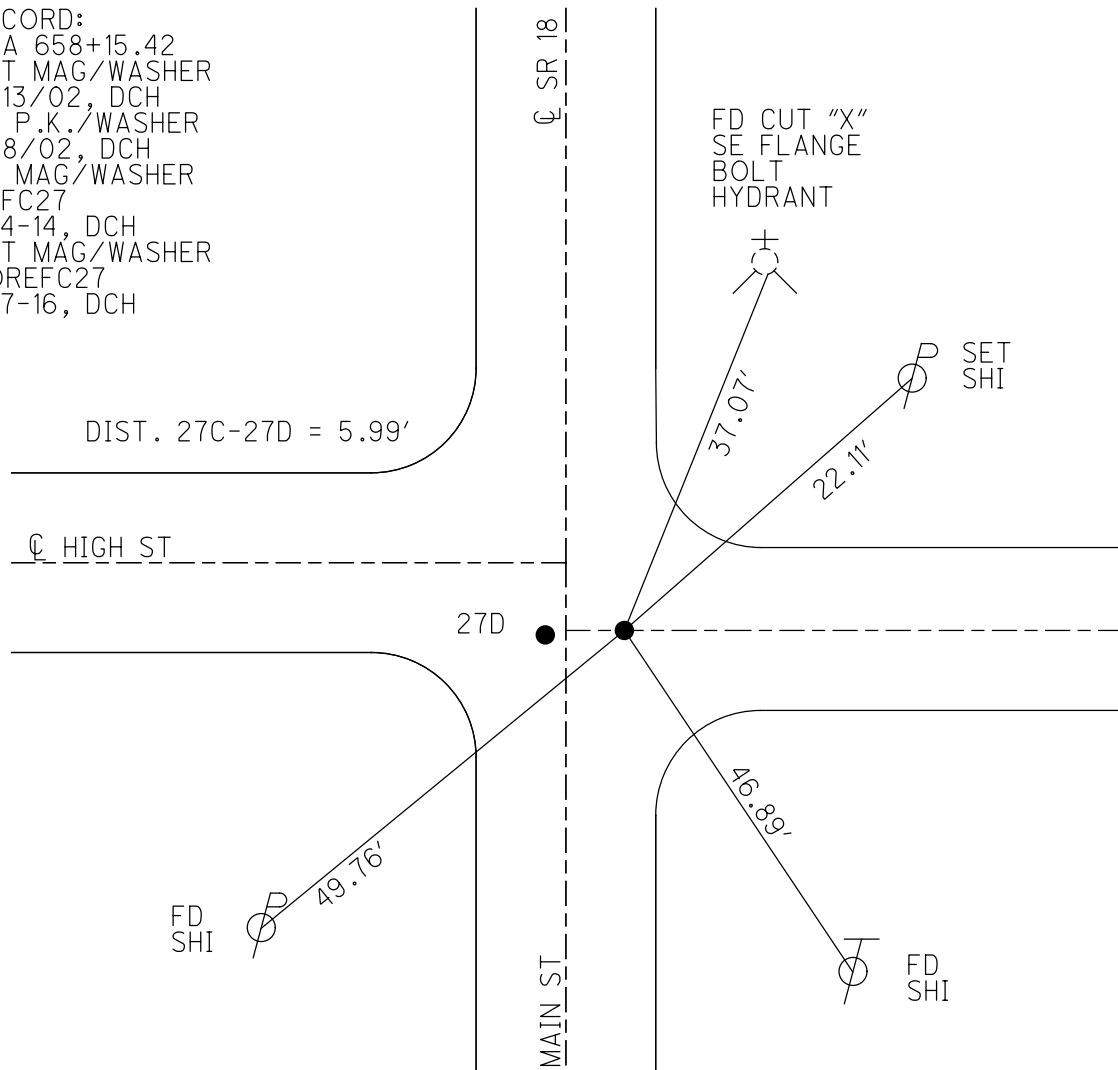
GEOID: 2012A

GRID: NORTHING: 551945.264

EASTING: 1644138.892



RECORD:
 STA 658+15.42
 SET MAG/WASHER
 2/13/02, DCH
 FD P.K./WASHER
 7/8/02, DCH
 FD MAG/WASHER
 REFC27
 8-4-14, DCH
 SET MAG/WASHER
 COREFC27
 9-7-16, DCH



O.D.O.T. DISTRICT 2 SURVEY OFFICE (USE ONLY)

PERSONNEL

REFERENCE NO. 27 D

SHEET 4 OF 19

NOTES HOMAN DATE 8/4/14
 H.C. LEU WEATHER SUNNY
 R.C. THOMAS TEMP. 75°

ROUTE SR 18
 COUNTY WOOD
 TOWNSHIP HENRY
 SECTION 35

DWG BY MILLER PID 93417

T 3 N R 10 E

TYPE MONUMENT MAG/WASHER

ON SURFACE - ~~BELOW~~ ON

OFFSET Q PAVEMENT ON LT : RT

- TO - EDGE PAVEMENT

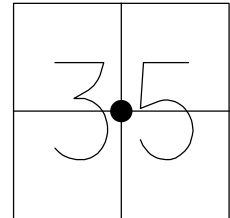
STATION: 658+15.66

HORZ.DATUM: NAD83 (2011)

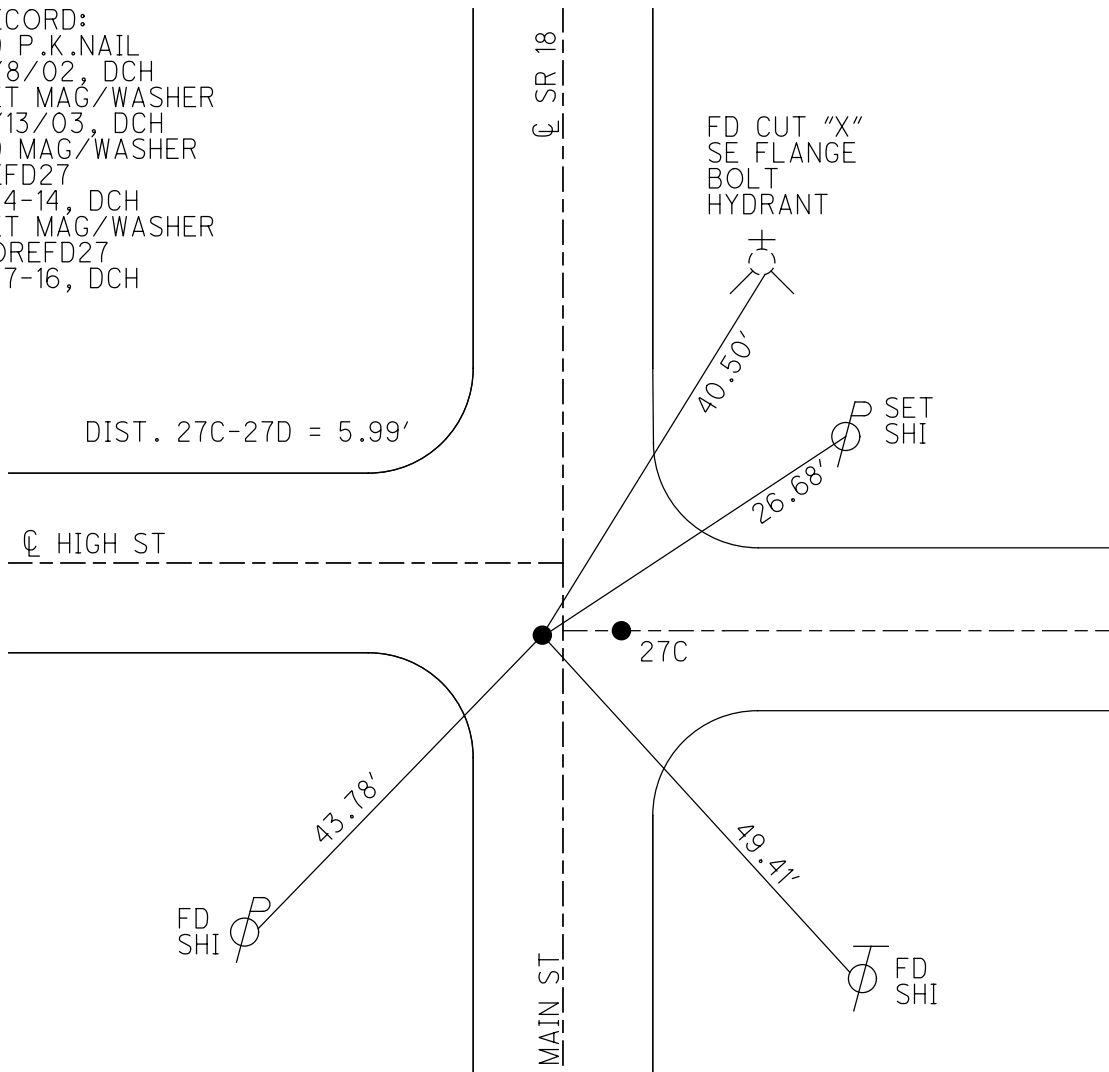
GEOID: 2012A

GRID: NORTHING: 551945.429

EASTING: 1644132.907



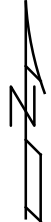
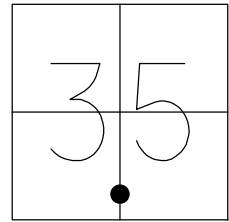
RECORD:
 FD P.K.NAIL
 7/8/02, DCH
 SET MAG/WASHER
 2/13/03, DCH
 FD MAG/WASHER
 REFD27
 8-4-14, DCH
 SET MAG/WASHER
 COREFD27
 9-7-16, DCH



O.D.O.T. DISTRICT 2 SURVEY OFFICE (USE ONLY)

PERSONNEL _____ REFERENCE NO. 27 E SHEET 5 OF 19
 NOTES HOFFMAN DATE 6/17/87 ROUTE SR 18
 H.C. LOEHREKE WEATHER CLEAR COUNTY WOOD
 R.C. BARNHISEL TEMP. 85° TOWNSHIP HENRY
SOCKMAN SECTION 35
T 3 N R 10 E

TYPE MONUMENT SM.R.R.SPIKE
 ON SURFACE - ~~BELOW~~ ON _____
~~LEFT~~ - ☉ PAV'T - RIGHT 93'
 - TO - EDGE PAVEMENT
 S.L.M. 666+23



Grid: Northing: _____ Easting: _____

RECORD: P.I.
 STA 667+20.88
 $\Delta = 84^\circ 46' \text{ LT}$

