

O.D.O.T. DISTRICT 2 SURVEY OFFICE (USE ONLY)

PERSONNEL

REFERENCE NO. 26

SHEET 24 OF 26

NOTES HOMAN

DATE 8/4/14

ROUTE SR 18

H.C. LEU

WEATHER SUNNY

COUNTY WOOD

R.C. THOMAS

TEMP. 70°

TOWNSHIP HENRY

SECTION 35

DWG BY MILLER

PID 93417

T 3 N R 10 E

TYPE MONUMENT MAG/WASHER

ON SURFACE - ~~BELOW~~ ON

OFFSET  $\varnothing$  PAVEMENT 0.4' LT : ~~RT~~

3' W TO N EDGE PAVEMENT

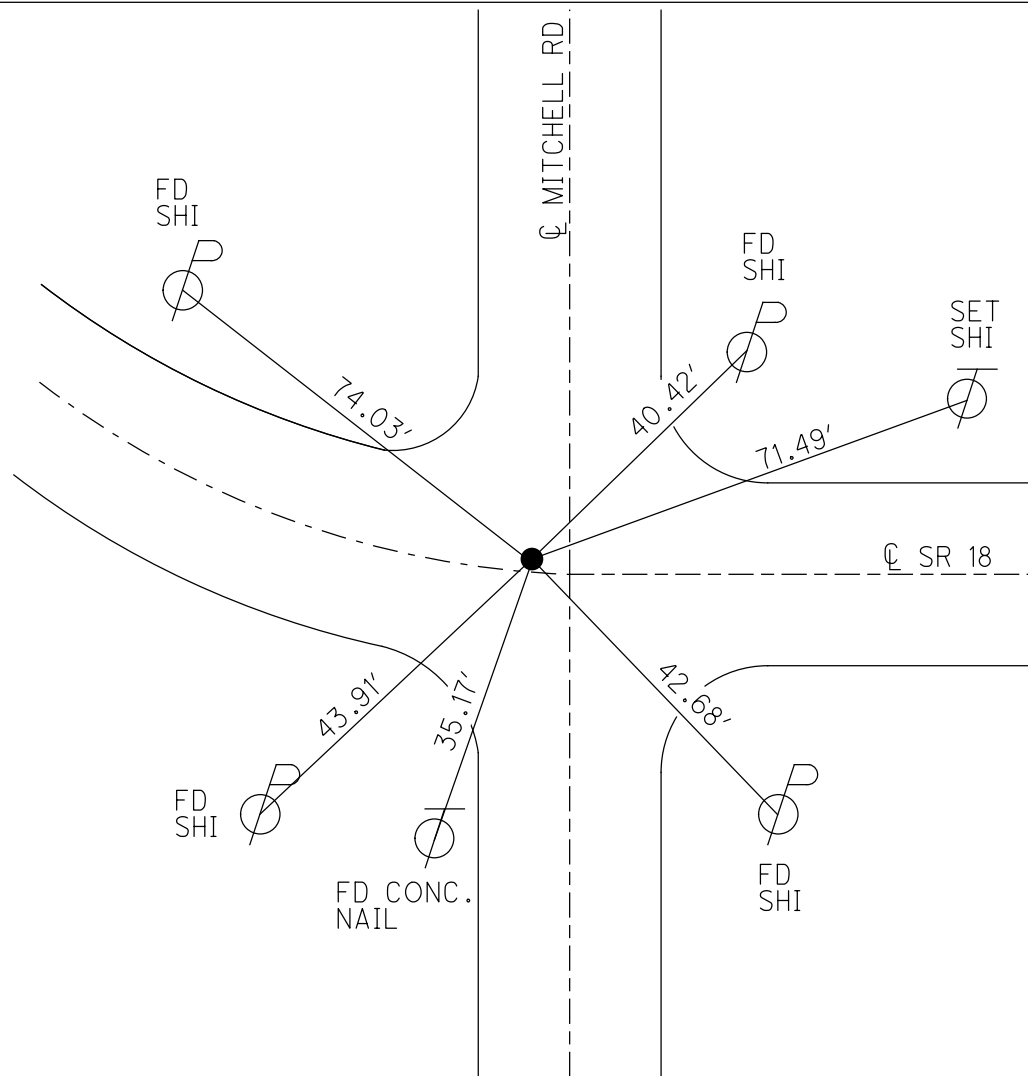
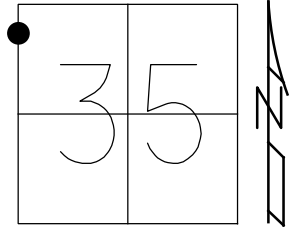
STATION: 611+42.40

HORIZ.DATUM: NAD83 (2011)

GEOID: 2012A

GRID: NORTHING: 553999.087

EASTING: 1641462.500

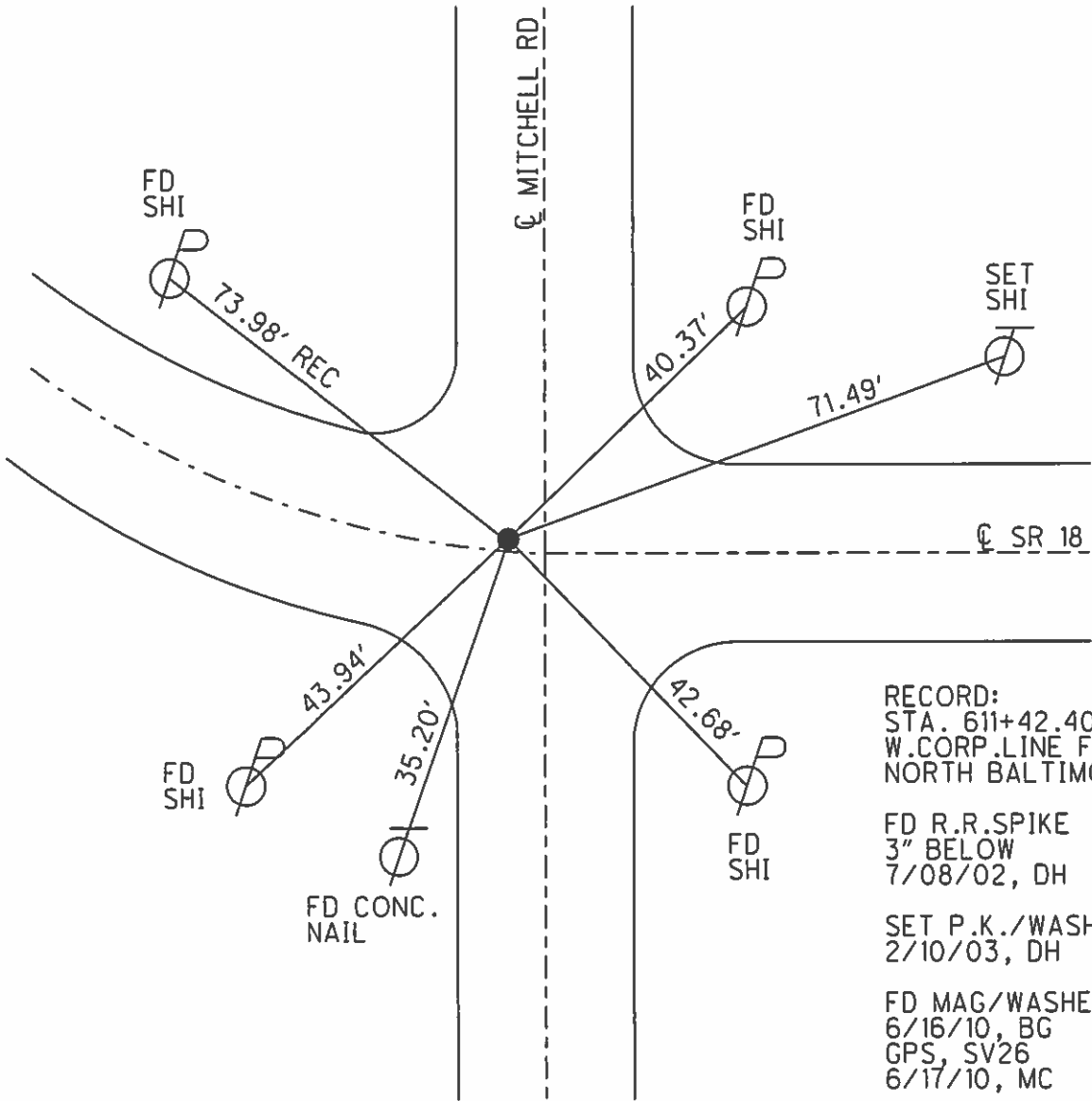
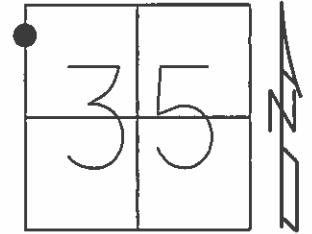


RECORD:  
 STA. 611+42.40  
 W.CORP.LINE FOR  
 NORTH BALTIMORE  
 FD R.R.SPIKE  
 3" BELOW  
 7/08/02, DH  
 SET P.K./WASHER  
 2/10/03, DH  
 FD MAG/WASHER  
 6/16/10, BG  
 SV26  
 6/17/10, MC  
 FD MAG/WASHER  
 REF26  
 8-4-14, DH  
 SET MAG/WASHER  
 COREF26  
 9-2-16, DCH

O.D.O.T. DISTRICT 2 SURVEY OFFICE (USE ONLY)

PERSONNEL \_\_\_\_\_ REFERENCE NO. 26 SHEET 24 OF 26  
 NOTES CANTERBURY DATE 6/3/11 ROUTE SR 18  
 H.C. HUSS WEATHER CLEAR COUNTY WOOD  
 R.C. HARBAUGH TEMP. 63° TOWNSHIP HENRY  
 \_\_\_\_\_ SECTION 35  
 \_\_\_\_\_ T 3 N R 10 E

TYPE MONUMENT R.R.SPIKE  
 ON SURFACE - ~~BELOW~~ ON \_\_\_\_\_  
 LEFT - ☉ PAV'T - ~~RIGHT~~ 0.5'  
 \_\_\_\_\_ TO \_\_\_\_\_ EDGE PAVEMENT  
 S.L.M. 609+95.28  
 Grid: Northing: 553999.177 Easting: 1641462.429



RECORD:  
 STA. 611+42.40  
 W.CORP.LINE FOR  
 NORTH BALTIMORE  
  
 FD R.R.SPIKE  
 3" BELOW  
 7/08/02, DH  
  
 SET P.K./WASHER  
 2/10/03, DH  
  
 FD MAG/WASHER  
 6/16/10, BG  
 GPS, SV26  
 6/17/10, MC

O.D.O.T. DISTRICT 2 SURVEY OFFICE

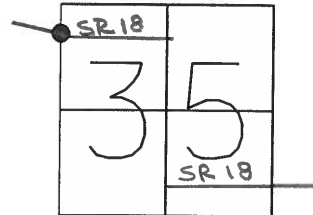
PERSONNEL

NOTES \_\_\_\_\_  
 H.C. \_\_\_\_\_  
 R.C. \_\_\_\_\_  
 \_\_\_\_\_  
 \_\_\_\_\_

REFERENCE NO. 26  
 DATE 7-08-02  
 WEATHER SUNNY  
 TEMP. 70°

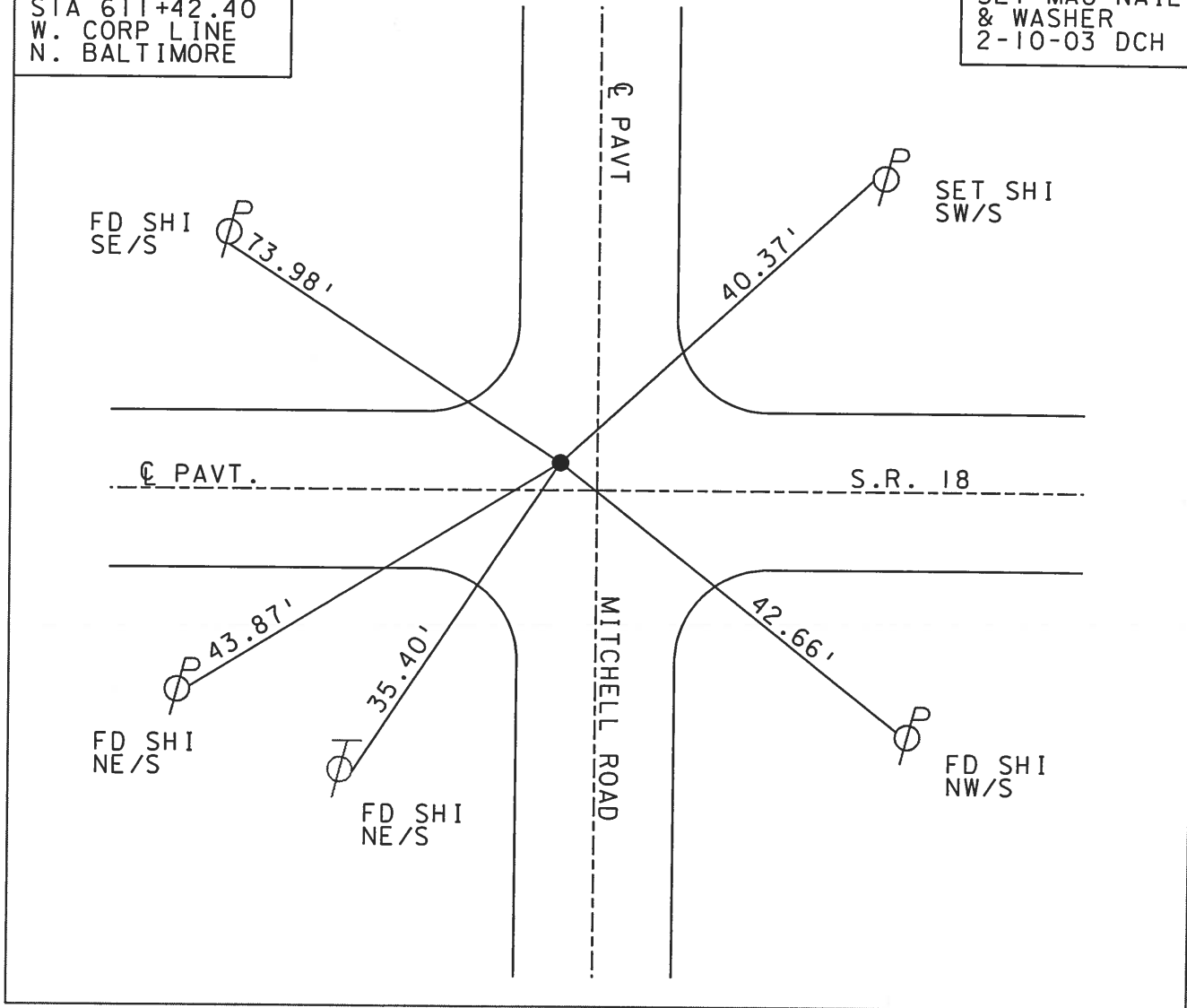
SHEET 1 OF 17  
 ROUTE S.R. 18  
 COUNTY WOOD  
 TOWNSHIP HENRY  
 SECTION 35  
T 3 N R 10 E

TYPE MONUMENT RR SPIKE  
~~ON SURFACE - BELOW~~ 3"  
~~LEFT - C PAV'T - RIGHT~~ 1.2'  
TO EDGE PAVEMENT 3.0' W OF C  
S.L.M. 610+90 PAVT NORTH



RECORD:  
 STA 611+42.40  
 W. CORP LINE  
 N. BALTIMORE

SET MAG NAIL  
 & WASHER  
 2-10-03 DCH



Milled & Resurfaced 2002

# O.D.O.T. DISTRICT 2 SURVEY OFFICE

PERSONNEL

REFERENCE NO. 26

SHEET 12 OF     

NOTES HOFFMAN

H.C. LOSHREE

R.C. BARNHISEK

Soc. Kman

DATE 6-17-87

WEATHER CLEAR

TEMP. 80°

ROUTE SR 18

COUNTY WOOD

TOWNSHIP HENRY

SECTION 35

T.3 N R 10 E

TYPE MONUMENT SMALL RR SPIKE

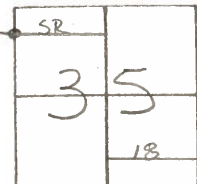
ON SURFACE - ~~BELOW~~ YES

LEFT - & PAV'T. - ~~RIGHT~~ 1.2

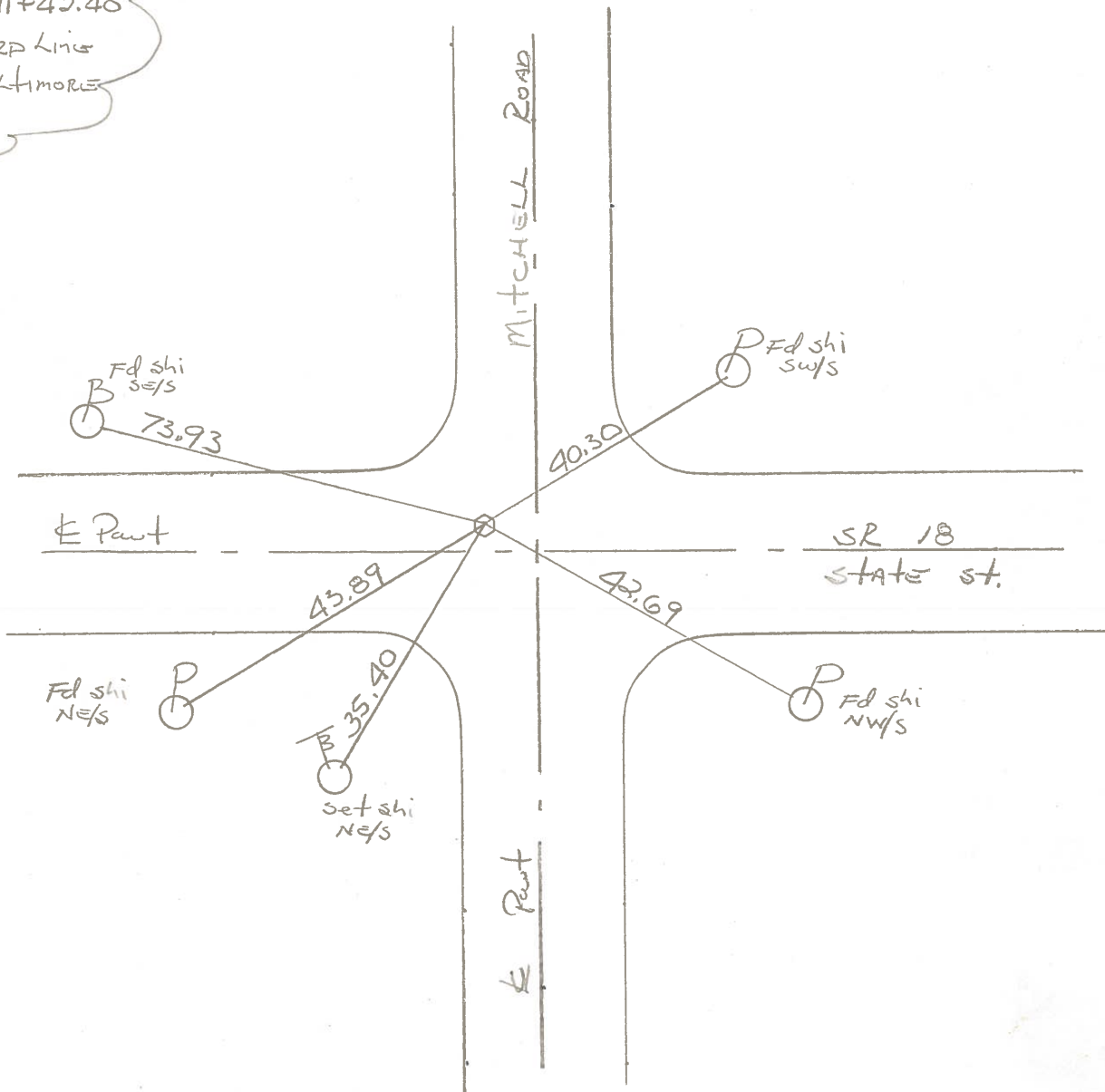
TO EDGE PAVEMENT 3.0' West of & Pavt North

S.L.M. 610 + 90

Set PK/WASHER  
7-21-87  
SWM



Records:  
Sta 611+42.40  
W. Corp Line  
N. Baltimore



O.D.O.T. DISTRICT 2 SURVEY OFFICE

Sht. 6 of 22  
S.R. 18

County WOOD

Date 6-15-78

Township HENRY

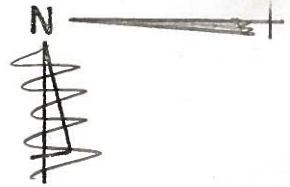
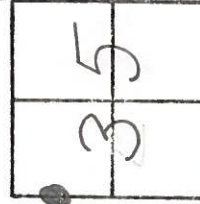
Weather Pt. Cloudy

Section \_\_\_\_\_

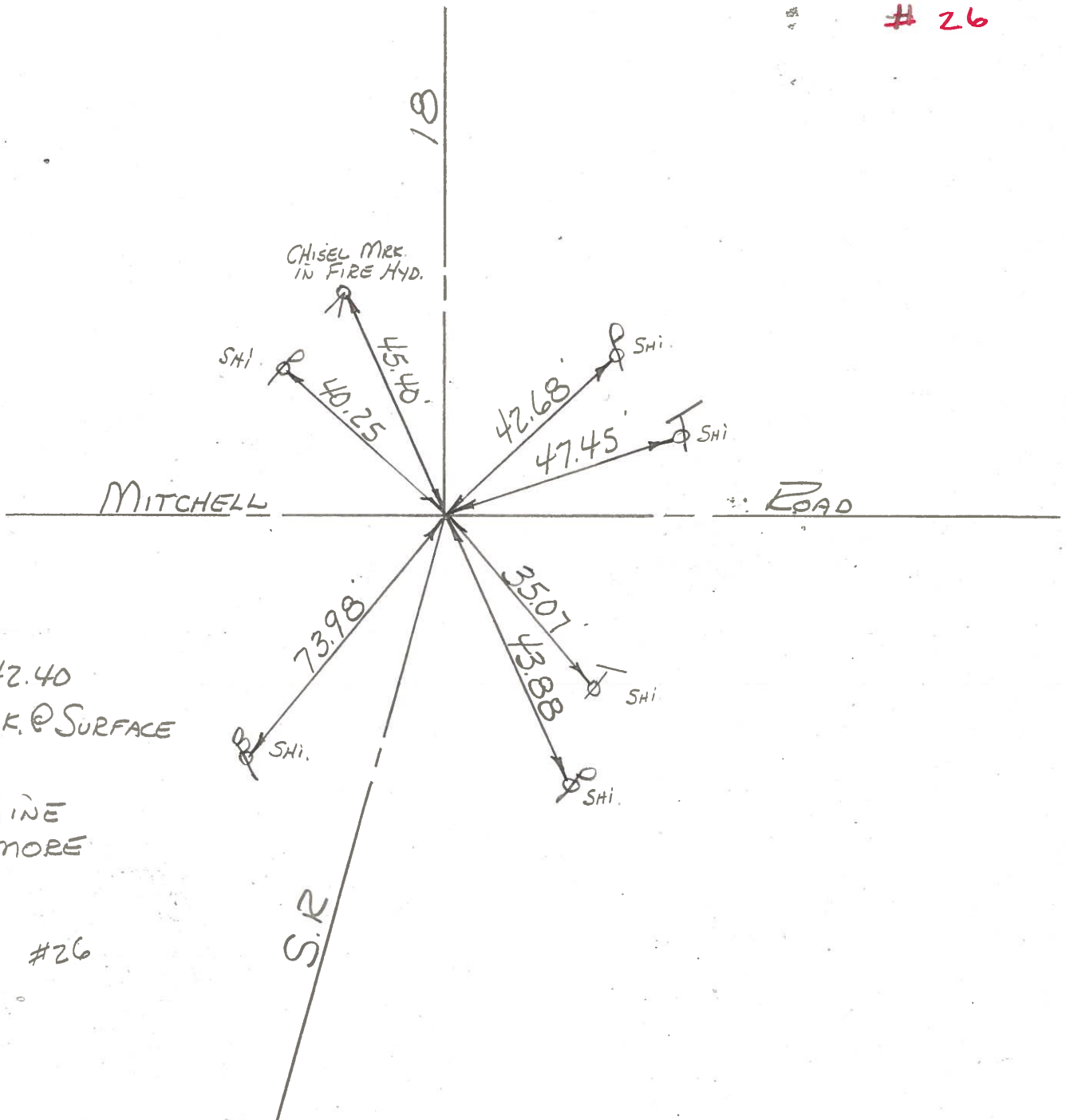
Temp. +70°

T. N, R. E

Personnel BURNSIDE  
SMITH  
BOWERS  
KNAPE  
MEAD



# 26



STA. 611+42.40  
FD. R.R. SPK. @ SURFACE  
& SURVEY

W. CORP. LINE  
N. BALTIMORE

#26

S.R.

PERSONNEL	TITLE	PERSONNEL	TITLE	COUNTY	DATE	WEATHER	TEMP.
BURNSIDE				WOOD	1-4-71	CLOUDY	+20°
SMITH				S. R. #18			
BOWERS				SEC. 11.5B-12.63			
HOLCOMBE							

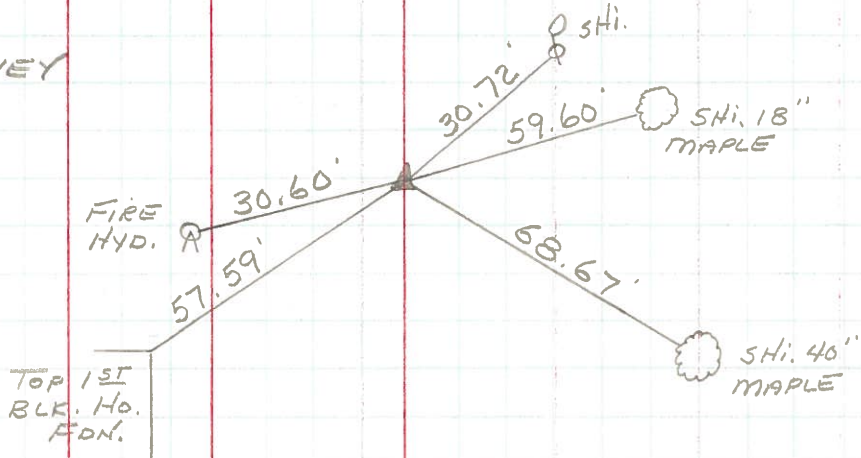
DESCRIPTION NORTH BALTIMORE JOB NO. \_\_\_\_\_

LEFT CENTER LINE RIGHT



STA. 630+50.10  
R. R. SPK. & SURVEY  
FRAZIER ST. &  
S. R. 18

#26-A



STA. 611+42.40  
R. R. SPK. & SURVEY  
MITCHELL RD. &  
S. R. 18  
W. CORP. LINE  
NORTH BALTIMORE

#26

