

O.D.O.T. DISTRICT 2 SURVEY OFFICE (USE ONLY)

PERSONNEL

REFERENCE NO. 27 B

SHEET 2 OF 19

NOTES HOMAN DATE 8/4/14
 H.C. LEU WEATHER SUNNY
 R.C. THOMAS TEMP. 75°

ROUTE SR 18
 COUNTY WOOD
 TOWNSHIP HENRY
 SECTION 35

DWG BY MILLER PID 93417

T 3 N R 10 E

TYPE MONUMENT MAG/WASHER

ON SURFACE - ~~BELOW~~ ON

OFFSET ☉ PAVEMENT ON LT : RT

- TO - EDGE PAVEMENT

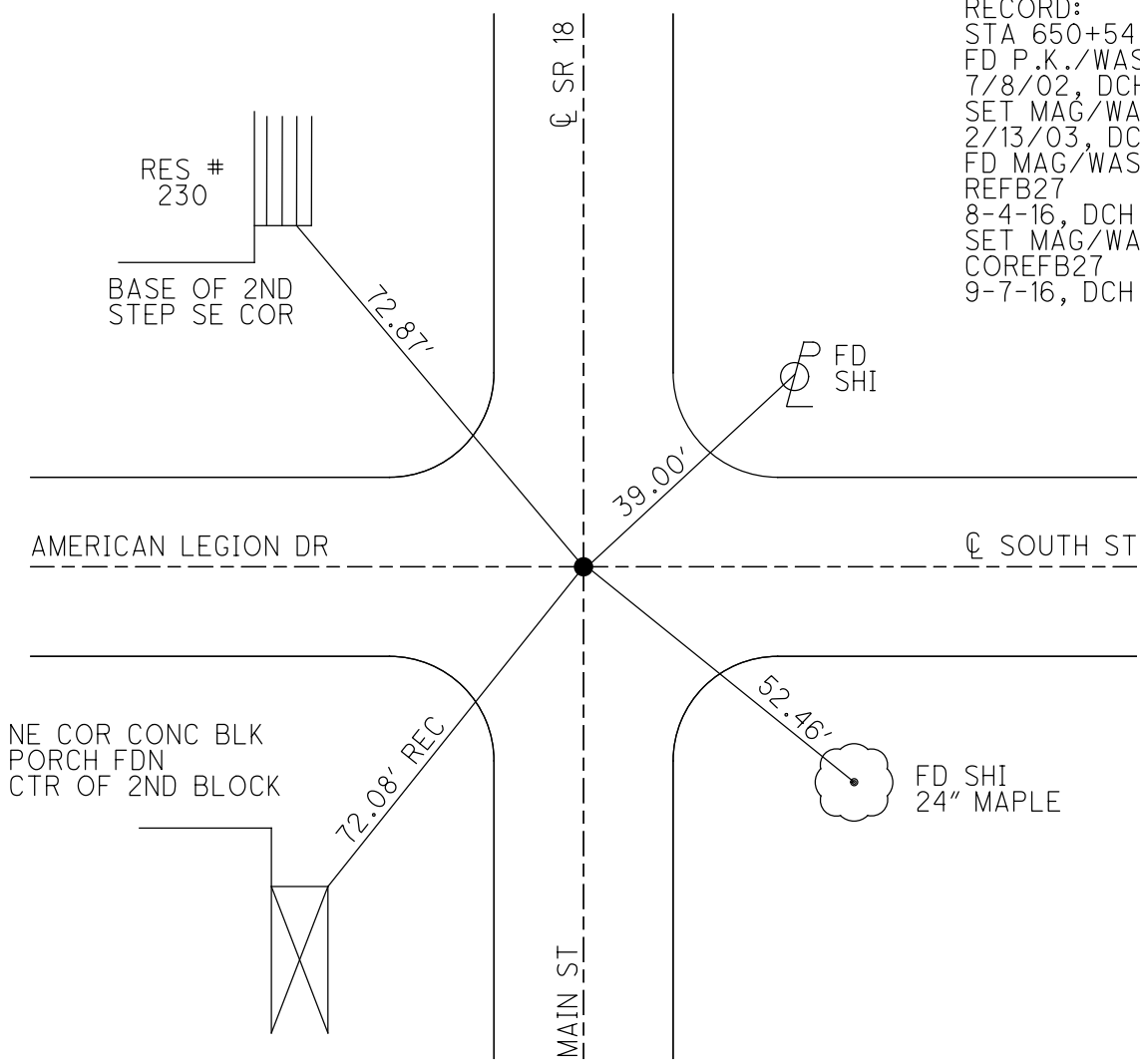
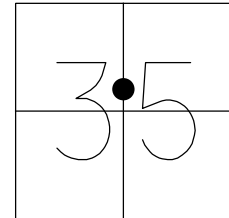
STATION: 650+54.71

HORZ.DATUM: NAD83 (2011)

GEOID: 2012A

GRID: NORTHING: 552706.288

EASTING: 1644147.121



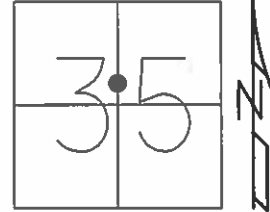
RECORD:
 STA 650+54.44
 FD P.K./WASHER
 7/8/02, DCH
 SET MAG/WASHER
 2/13/03, DCH
 FD MAG/WASHER
 REFB27
 8-4-16, DCH
 SET MAG/WASHER
 COREFB27
 9-7-16, DCH

O.D.O.T. DISTRICT 2 SURVEY OFFICE (USE ONLY)

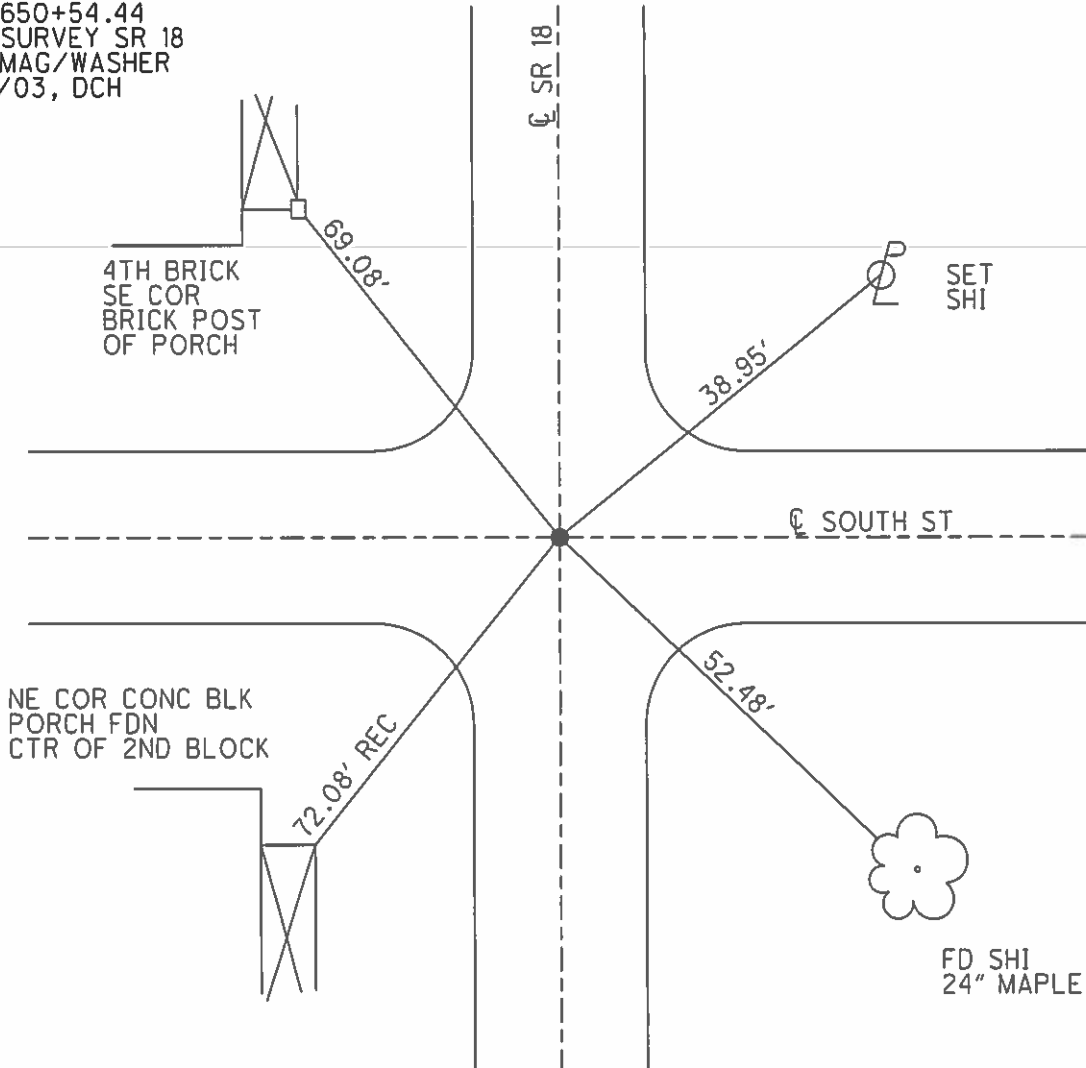
PERSONNEL _____ REFERENCE NO. 27 B SHEET 2 OF 18

NOTES HOMAN DATE 7/8/02 ROUTE SSR 18
 H.C. ZEBROWSKI WEATHER SUNNY COUNTY WOOD
 R.C. MICHALAK TEMP. 75° TOWNSHIP HENRY
BEAUMONT SECTION 35
T 3 N R 10 E

TYPE MONUMENT P.K./WASHER
 ON SURFACE - ~~BELOW~~ ON
 LEFT - ☉ PAV'T - RIGHT ON
TO EDGE PAVEMENT
 S.L.M. 649+99
 Grid: Northing: _____ Easting: _____



RECORD:
 STA 650+54.44
 & ☉ SURVEY SR 18
 SET MAG/WASHER
 2/13/03, DCH



O.D.O.T. DISTRICT 2 SURVEY OFFICE

PERSONNEL

REFERENCE NO. 27-B

SHEET 16 OF

NOTES HOFFMAN

H.C. LOEHRKE

R.C. BAWASEL

SOCKMAN

DATE 6-17-87

WEATHER CLEAR

TEMP. 85°

ROUTE SR 18

COUNTY WOOD

TOWNSHIP HENRY

SECTION 35

T.3 N R.10 E

TYPE MONUMENT SMALL RR SPIKE

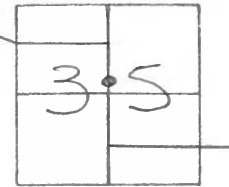
ON SURFACE - BELOW YES

LEFT - & PART - RIGHT BOTH PARTS

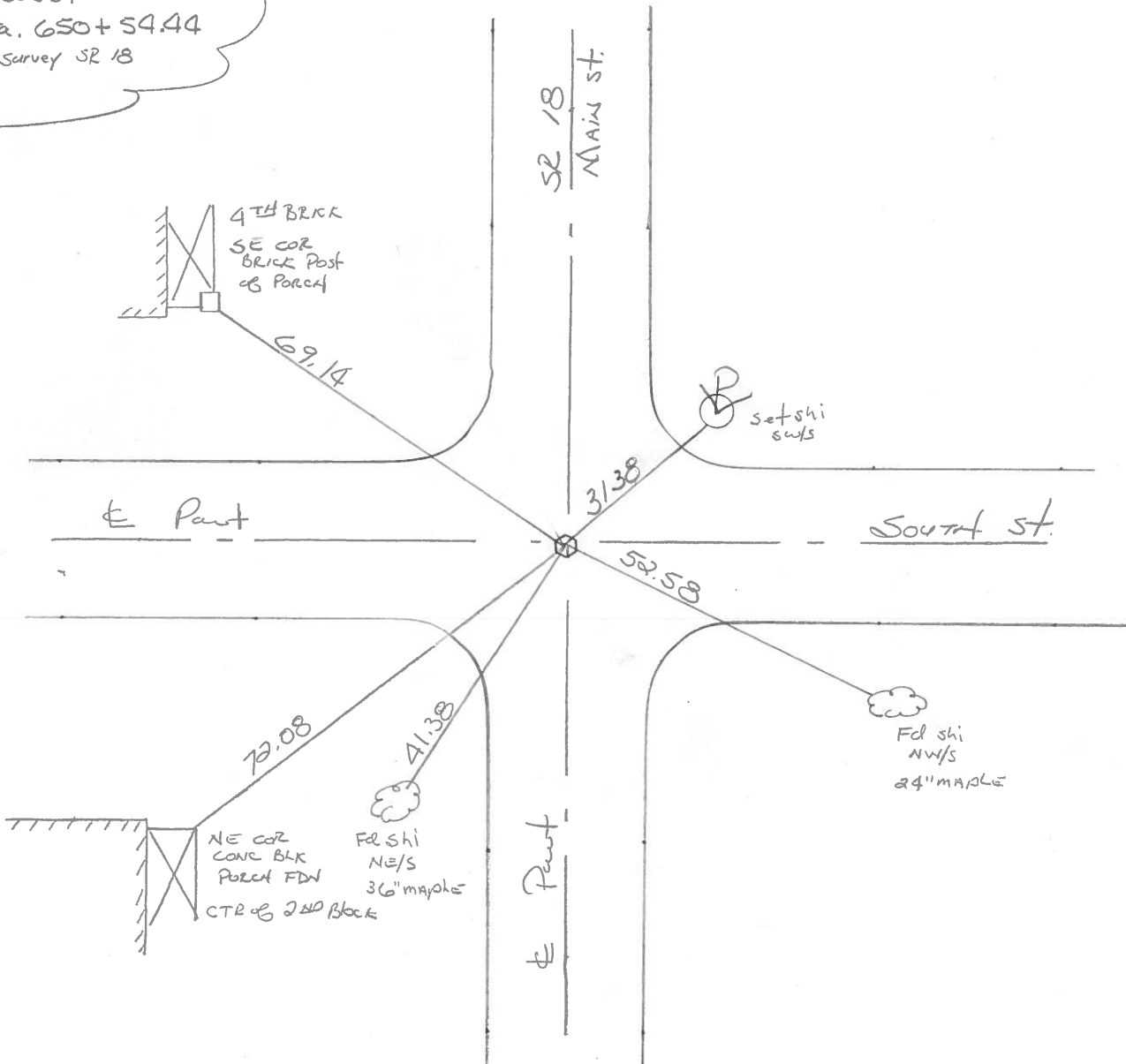
TO EDGE PAVEMENT

S.L.M. 649+99

Set PK/WASHER
7-27-87
SWH



Record:
Sta. 650+54.44
E Survey SR 18



O.D.O.T. DISTRICT 2 SURVEY OFFICE

Sht. 10 of 22

S.R. 18

County WOOD

Date 6-15-78

Township HENRY

Weather CLEAR

Section N. BALTIMORE

Temp. +72°

T N, R E

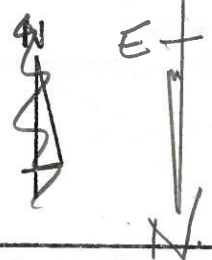
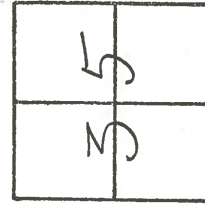
Personnel BURNSIDE

SMITH

BOWERS

KNAPE

MEAD



27B

STA. 650+54.44
 FD. R.R. SPK @ SURFACE
 & ON & SOUTH ST. &
 & SURVEY S.R. 18

SHI. IN 24" MAPLE

#27-B

SOUTH

52.65

72.08

STREET

31.04

69.15

SE. COR. BRICK POST OF PORCH

N.E. COR. CONC BLC PORCH FDN.

S.R.

PERSONNEL TITLE PERSONNEL TITLE

BURNSIDE
SMITH
BOWERS
HOLCOMBE

COUNTY Wood

DATE 1-4-76

S. R. #18

WEATHER CLOUDY

SEC.

TEMP. +20°

DESCRIPTION

NORTH BALTIMORE CORP.

JOB NO.

LEFT

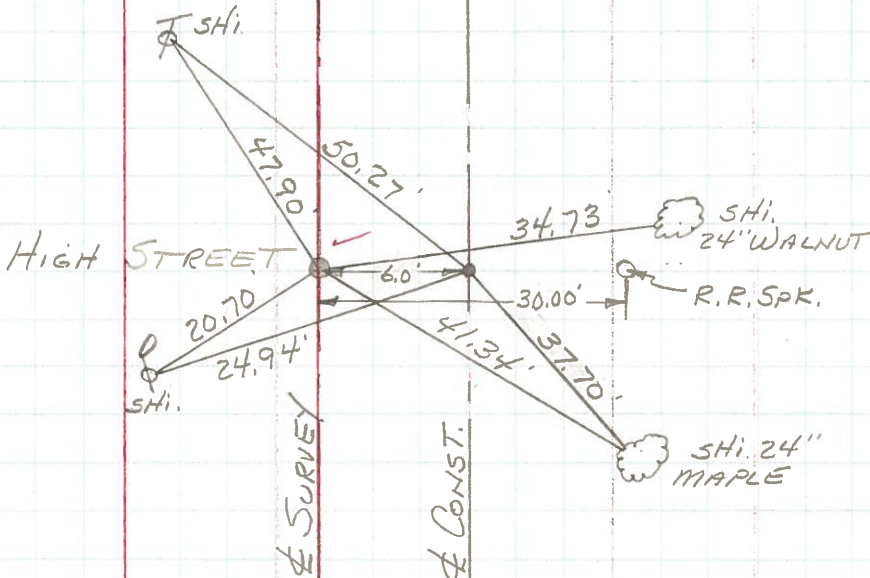
CENTER LINE

RIGHT

STA. 658+15.42
R.R. SPK. & SURVEY
INT. COR. SEC. 35
HENRY TWP.
T-3-N-R-10-E

#27-C

STA. 658+15.42
P.K. & CONST.



STA. 650+54.44
R.R. SPK. & SURVEY
SOUTH ST. E'
S. R. 18

#27-B

