

STATE OF OHIO  
DEPARTMENT OF HIGHWAYS AND PUBLIC WORKS  
DIVISION OF HIGHWAYS  
BUREAU OF CONSTRUCTION

**DESHLER-FINDLAY, ~~BALTIMORE-FOSTORIA~~ ROAD**

~~I.C.H. 225-SEC. A, E & HOYTVILLE I.C.H. 224 SEC. B~~

**WOOD COUNTY**

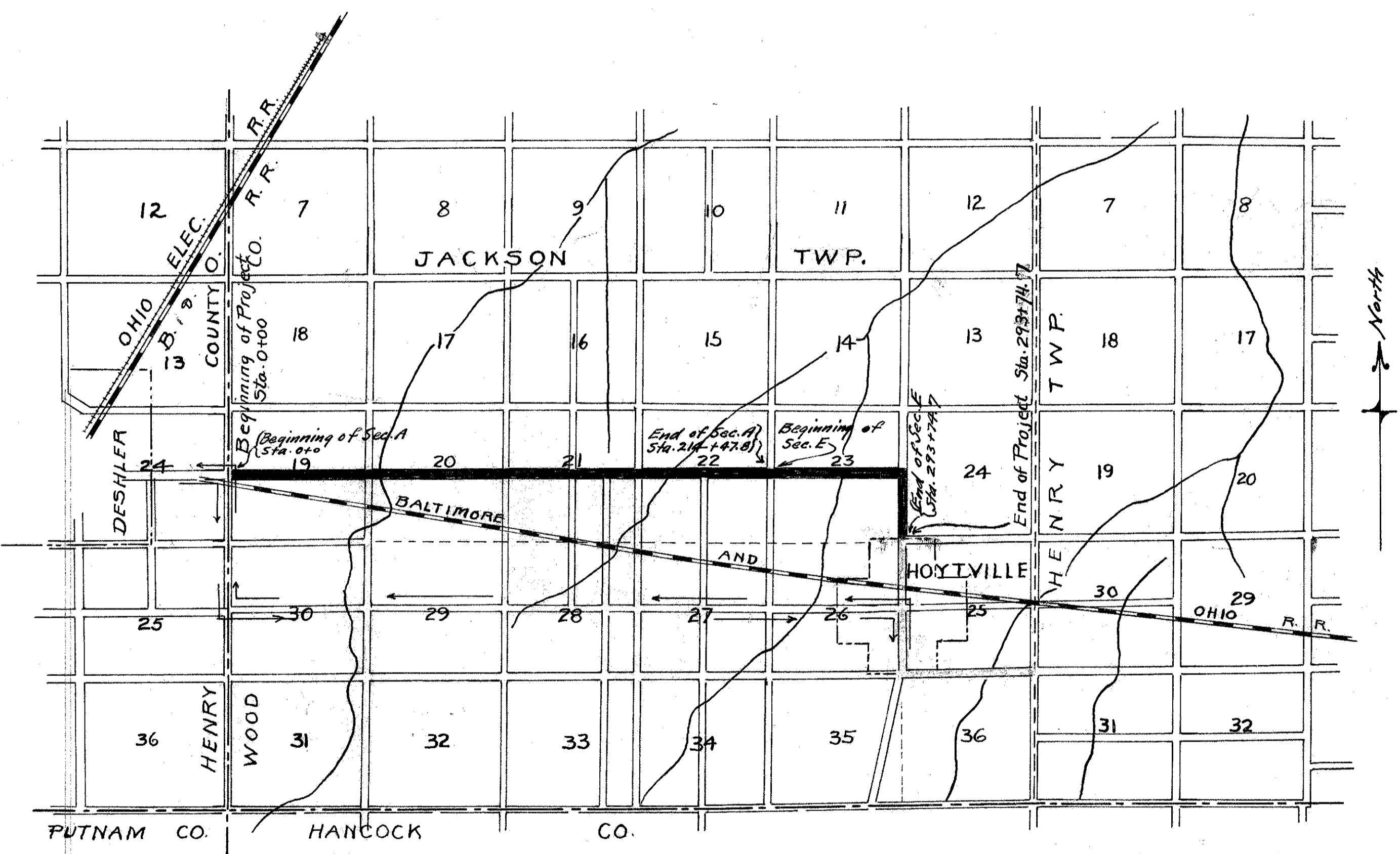
JACKSON TOWNSHIP  
PET. NO. 5335-5390  
JAN. 1926.

INDEX

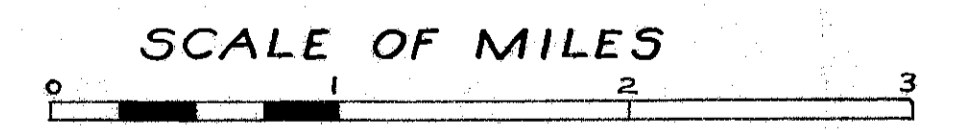
Title Page	p. 1
Typical Cross Section	p. 2
Plans and Profile	p. 3-12 inc.
Cross Sections	p. 13-23 inc.
Structural Plans	p. 24-29 inc.
Summary Sheet	p. 30.

**CONVENTIONAL SIGNS**

- County Line
- Township Line
- Section Line
- Property Line Not Fenced
- Center Line
- City or Village Line
- Fence
- Telephone or telegraph
- Steam Railroad
- Electric Line



**LOCATION PLAN**



PORTION TO BE IMPROVED   
DETOURS SHOWN THUS

SCALES

Plan	1" = 100'
Profile (Vertical)	1" = 10'
Profile (Horizontal)	1" = 100'
Cross-Sections	1" = 5'



We the Commissioners of Wood County hereby approve these plans and certify that the rt. of way ~~46~~ 60 Feet wide is available for the construction maintenance and repair of the above highway

*E. Leathers*  
*D. J. Pettys*  
*A. S. L.*

Date 5-22-26 County Commissioners

From Sta. 0+00 to Sta. 346+42 width of rt. of way is 60 ft.; from Sta. 346+42 to 399+39.7 width is 46 ft.

The Standard Specifications of the State of Ohio, Division of Highways, in force on date of Contract will govern this improvement

I hereby approve these plans and declare that the making of this improvement will require the closing to traffic of the Highway and that detours will be provided as shown on the plans and estimates

Approved *W. W. Sockel*  
Date May 4, 1926 Resident Engineer

Approved *W. M. J. Henshaw*  
Date 5-12-26 Resident Deputy  
State Highway Commissioner

Approved *Harry J. Turk*  
Date 5-21-26 State Highway Engineer

Approved *G. F. Schlessinger*  
Date 5-21-26 Director of Highways and  
Public Works

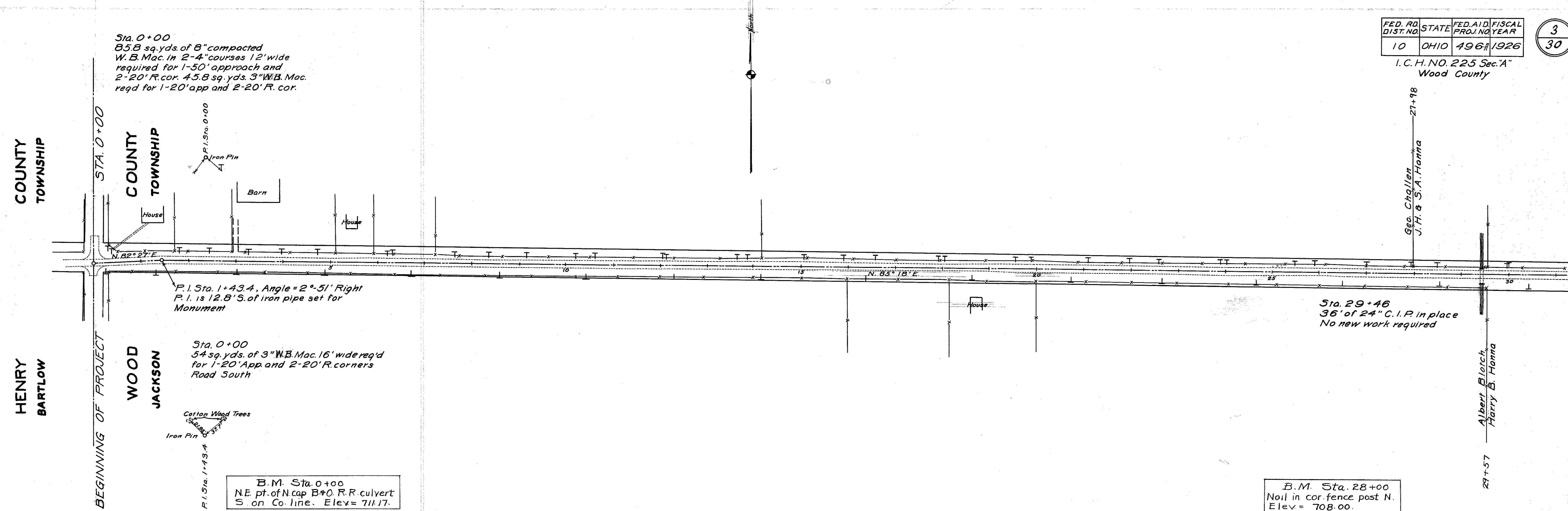
Recommended for Approval  
Date \_\_\_\_\_ District Engineer  
Bureau of Public Roads

Recommended for Approval  
Date \_\_\_\_\_ Chief Engineer  
Bureau of Public Roads

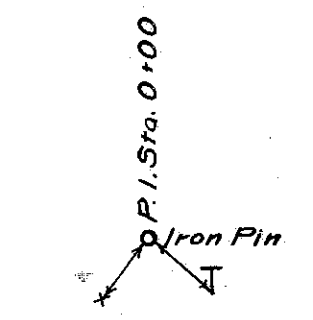
Approved  
Date \_\_\_\_\_ Chief of Bureau

FED. RD. DIST. NO.	STATE	FED. AID PROJ. NO.	FISCAL YEAR
10	OHIO	4961	1926

I.C.H. NO. 225 Sec. A  
Wood County

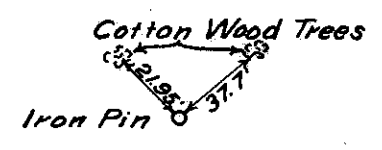


Sta. 0+00  
85.8 sq. yds. of 8" compacted  
W.B. Mac. in 2-4" courses 12' wide  
required for 1-50' approach and  
2-20' R. cor. 45.8 sq. yds. 3" W.B. Mac.  
reqd for 1-20' app and 2-20' R. cor.



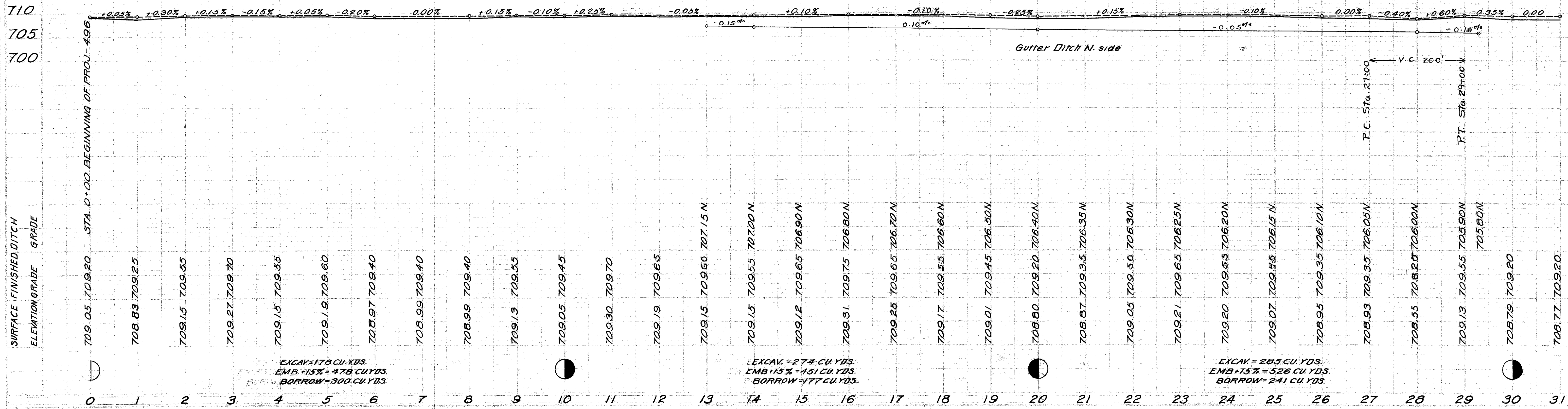
P.I. Sta. 1+43.4, Angle = 2°-51' Right  
P.I. is 12.8' S. of iron pipe set for  
Monument

Sta. 0+00  
54 sq. yds. of 3" W.B. Mac. 16' wide req'd  
for 1-20' App. and 2-20' R. corners  
Road South



B.M. Sta. 0+00  
N.E. pt. of N. cap B&O R.R. culvert  
S on Co. line. Elev = 711.17.

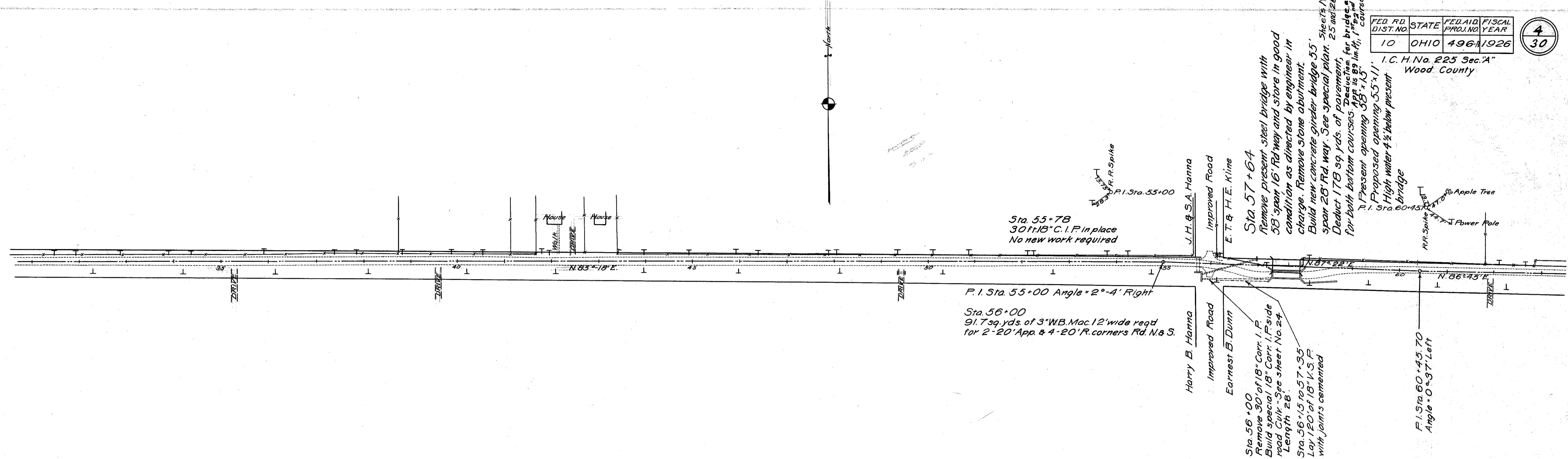
B.M. Sta. 28+00  
Nail in cor. fence post N.  
Elev = 708.00.



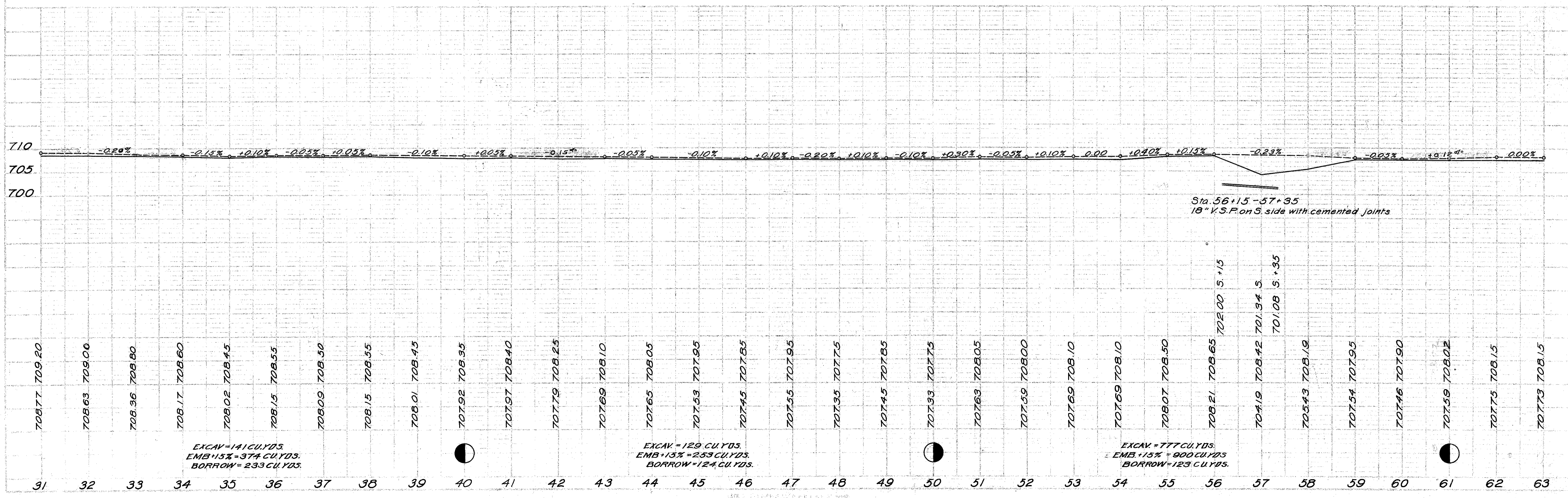
FED. RD. DIST. NO.	STATE	FED. AID PROJ. NO.	FISCAL YEAR
10	OHIO	496	1926

4  
30

I.C.H.No. 225 Sec. A  
Wood County



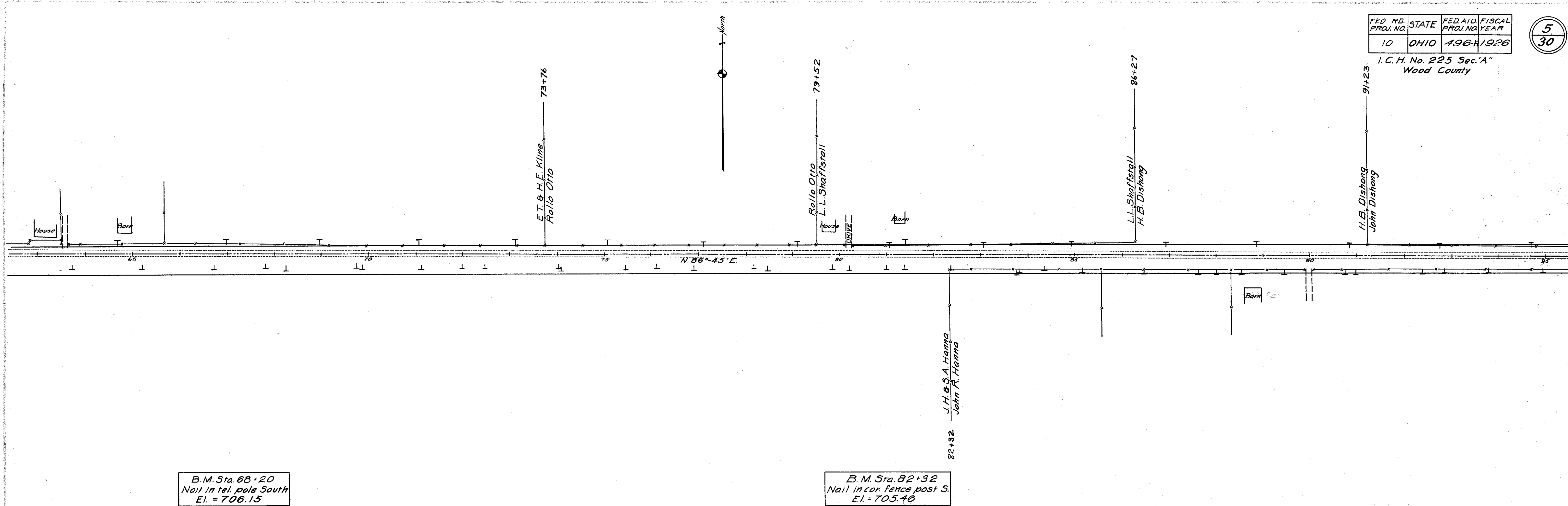
B.M. Sta. 57+30  
S.W. pt. of S.W. wing of bridge  
Elev. = 707.95



FED. RD. PROJ. NO.	STATE	FED. AID PROJ. NO.	FISCAL YEAR
10	OHIO	196A	1926

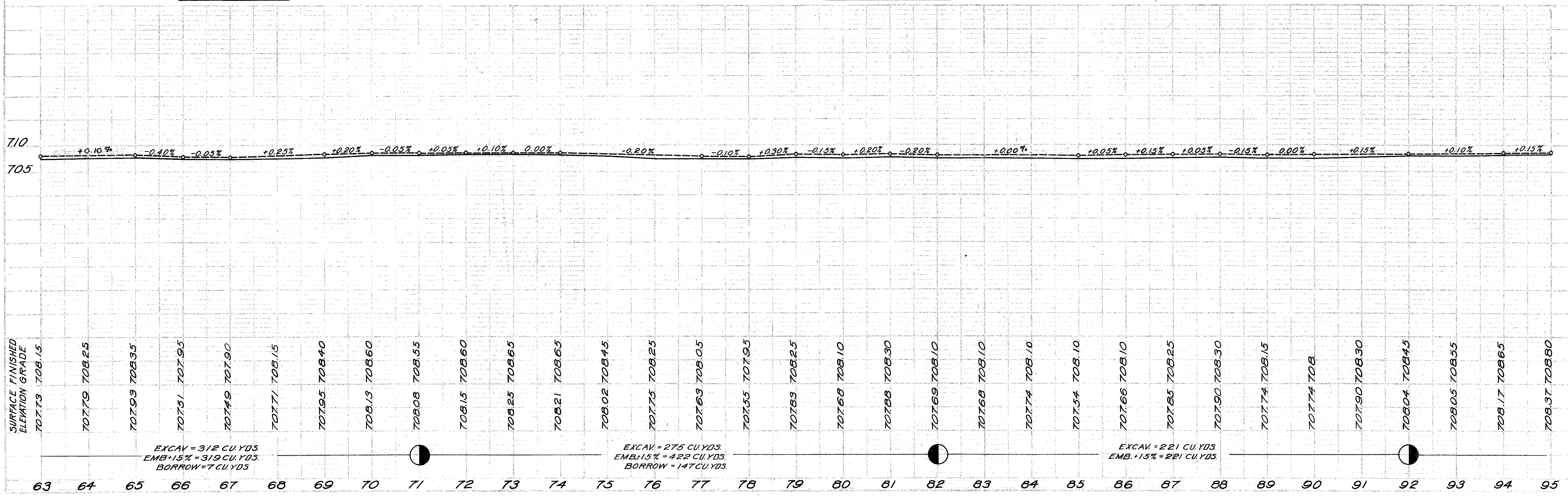
5  
30

I. C. H. No. 225 Sec. A  
Wood County

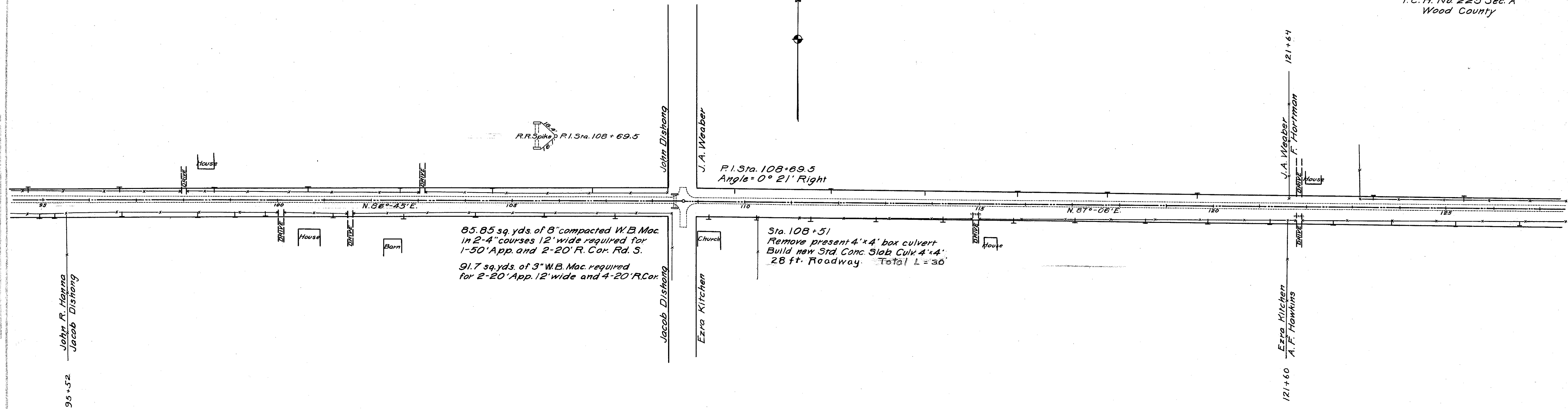


B.M. Sta. 68+20  
Nail in tel. pole South  
El. = 706.15

B.M. Sta. 82+32  
Nail in cor. fence post S.  
El. = 705.46



I. C. H. No. 225 Sec. A  
Wood County

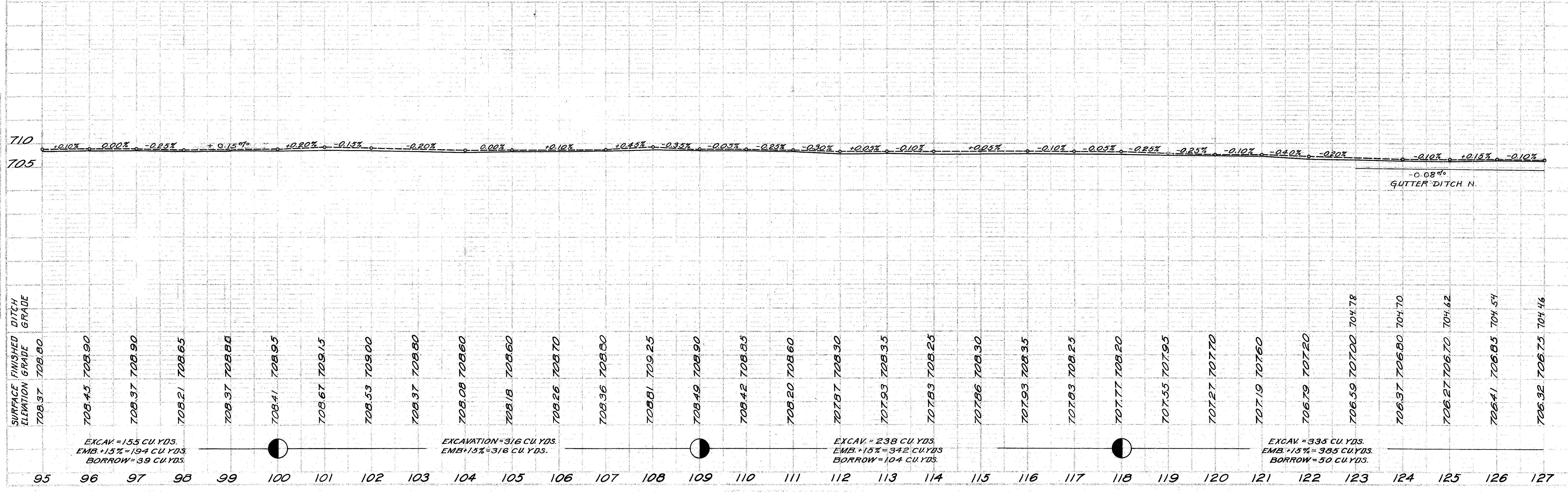


85.85 sq. yds. of 8" compacted W.B. Mac. in 2-4' courses 12' wide required for 1-50' App. and 2-20' R. Cor. Rd. S.  
91.7 sq. yds. of 3" W.B. Mac. required for 2-20' App. 12' wide and 4-20' R. Cor.

Sta. 108+51  
Remove present 4'x4' box culvert  
Build new Std. Conc. Slab Cuv. 4'x4'  
26 ft. Roadway. Total L=30'

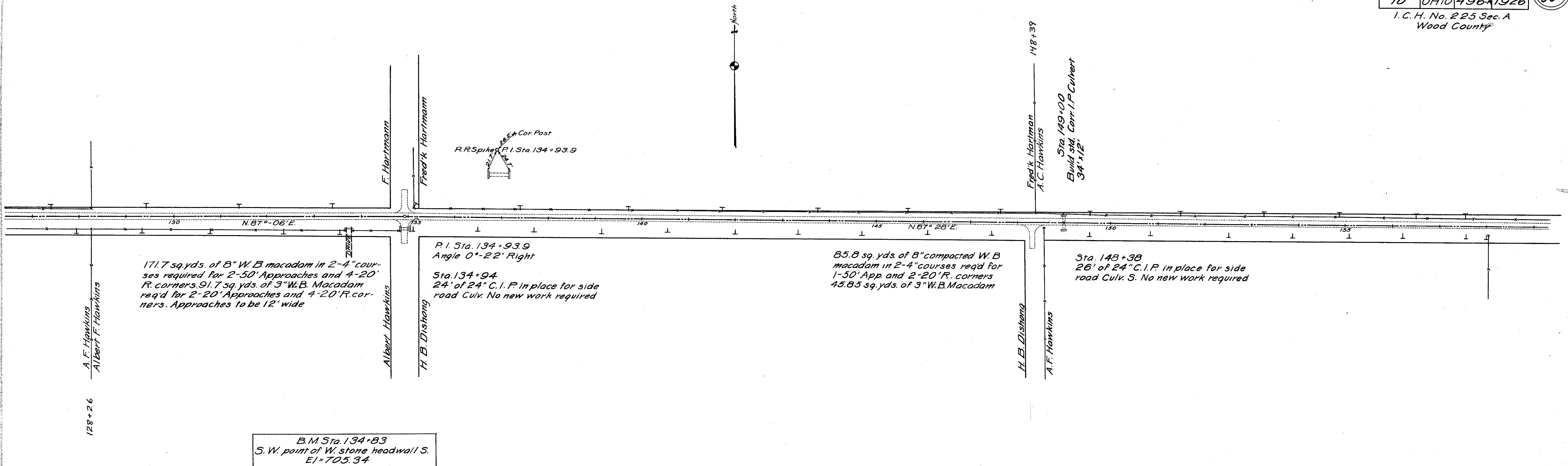
B. M. Sta. 108+45  
S.W. corner of S. headwall  
E1=709.71

B. M. Sta. 122+32  
S.E. corner of concrete steps to house N.  
E1=706.99

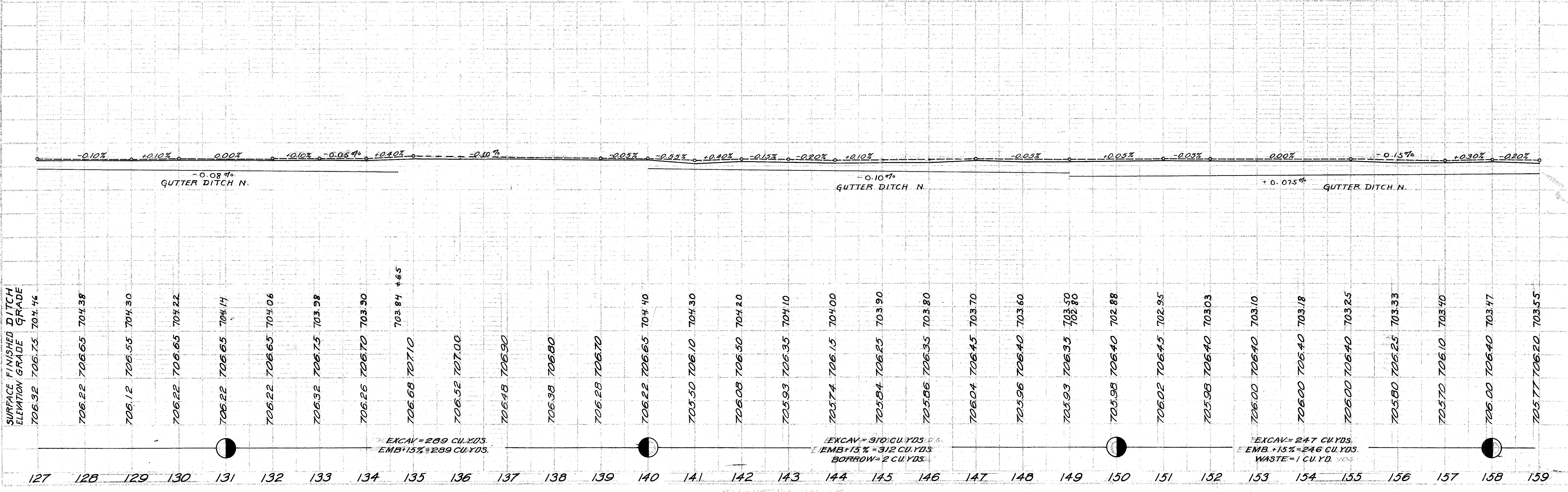


I. C. H. No. 225 Sec. A  
Wood County

PLAN  
DATE: 10/1/26  
SCALE: AS SHOWN  
NOTE: EXAMINE ALL REVISIONS PLACED ON THIS PLAN BY THE ENGINEER.



PROFILE  
DATE: 10/1/26  
SCALE: AS SHOWN  
NOTE: EXAMINE ALL REVISIONS PLACED ON THIS PROFILE BY THE ENGINEER.

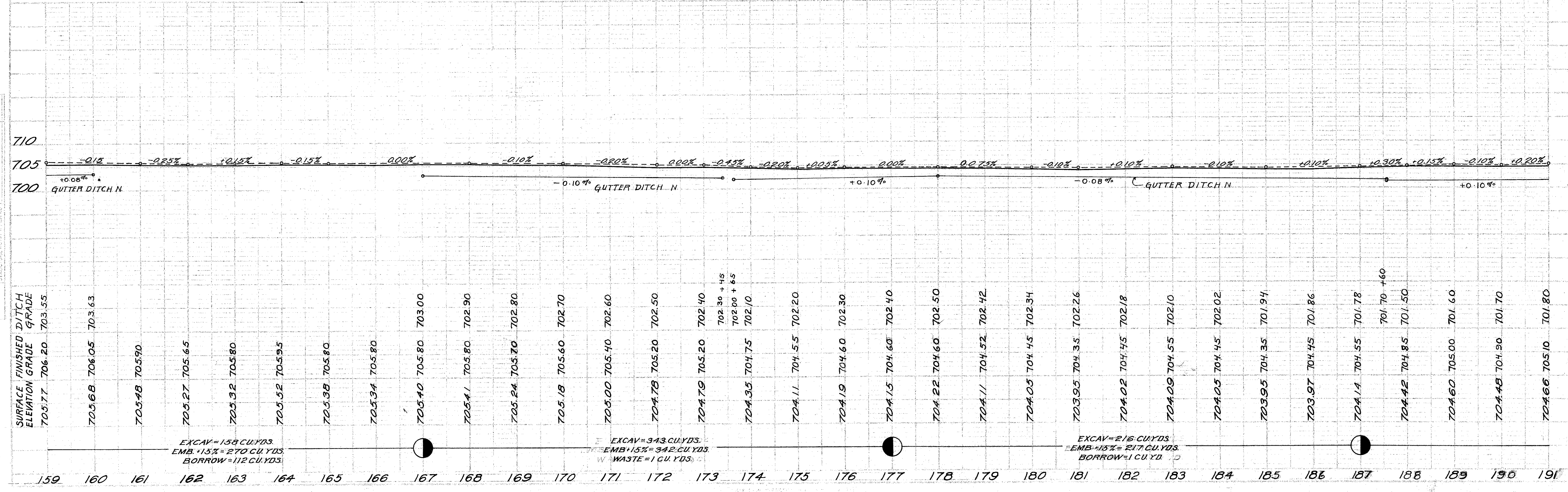
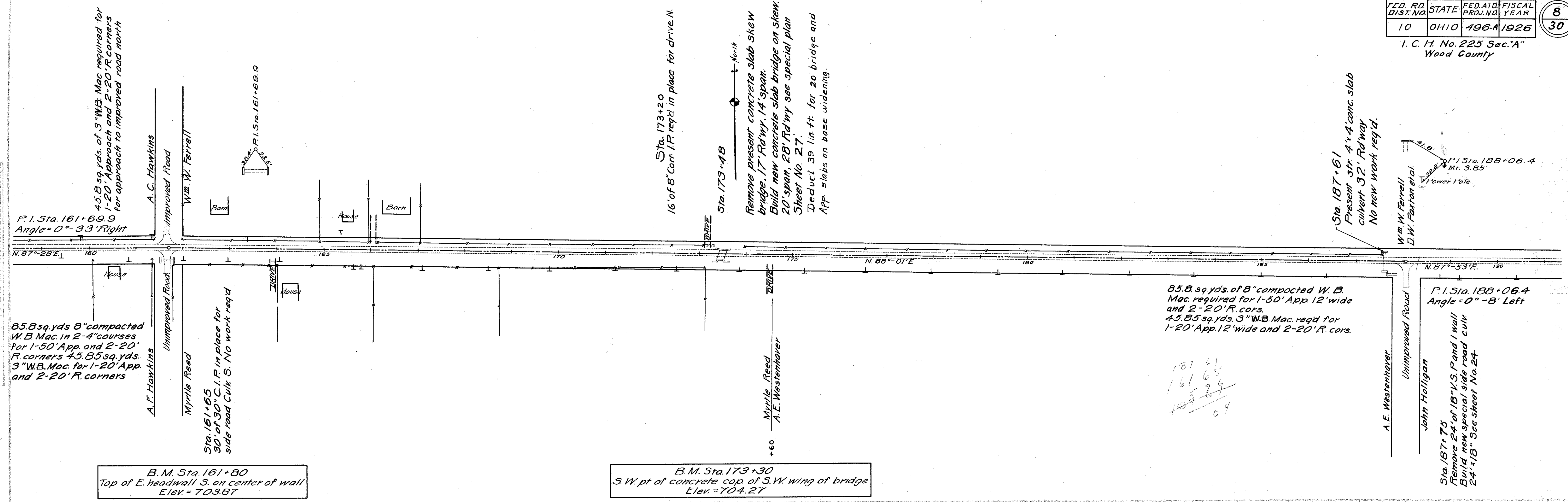


FOR ANY QUESTIONS PLEASE CONTACT ODOT DISTRICT 2 REAL ESTATE AT 419-353-8131

FED. RD. DIST. NO.	STATE	FED. AID PROJ. NO.	FISCAL YEAR
10	OHIO	496-A	1926

8/30

I. C. H. No. 225 Sec. "A"  
Wood County



B. M. Sta. 161+80  
Top of E. headwall S. on center of wall  
Elev. = 703.87

B. M. Sta. 173+30  
S.W. pt of concrete cap of S.W. wing of bridge  
Elev. = 704.27

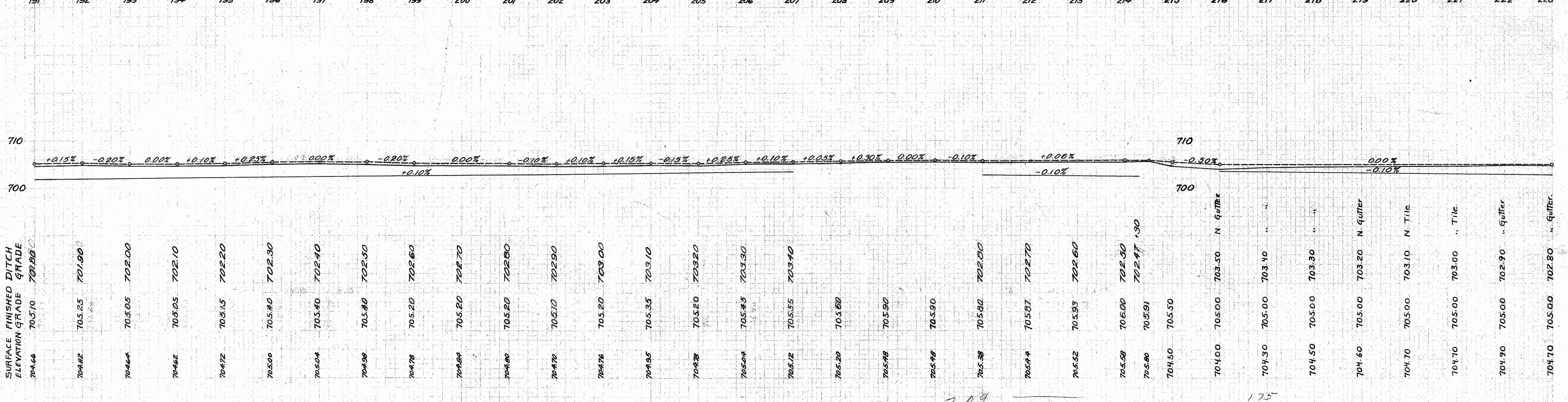
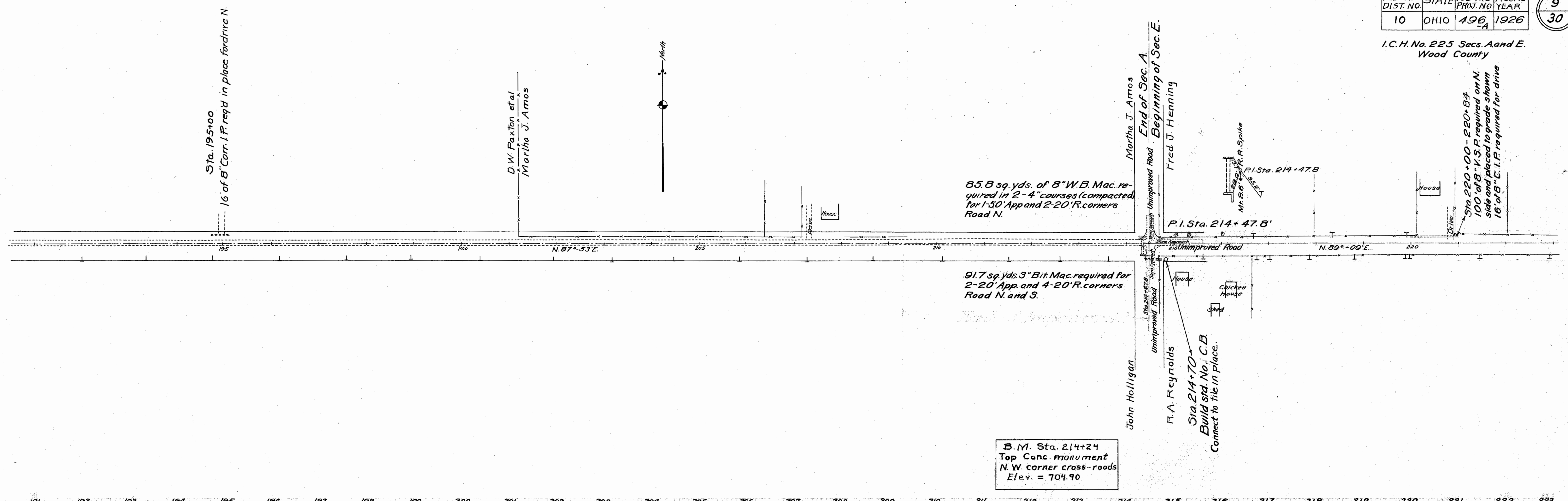
EXCAV = 158 CU. YDS.  
EMB. +15% = 270 CU. YDS.  
BORROW = 112 CU. YDS.

EXCAV = 343 CU. YDS.  
EMB. +15% = 542 CU. YDS.  
WASTE = 1 CU. YDS.

EXCAV = 216 CU. YDS.  
EMB. +15% = 247 CU. YDS.  
BORROW = 1 CU. YD.

187 61  
161 65  
159 29  
04

I.C.H. No. 225 Secs. A and E  
Wood County



STATION	SURFACE ELEVATION	FINISHED DITCH GRADE
704.66	705.10	701.80
704.82	705.25	701.90
704.64	705.05	702.00
704.62	705.05	702.10
704.72	705.15	702.20
705.00	705.40	702.30
705.04	705.40	702.40
704.98	705.40	702.50
704.78	705.20	702.60
704.88	705.20	702.70
704.80	705.20	702.80
704.70	705.10	702.90
704.76	705.20	703.00
704.85	705.35	703.10
704.78	705.20	703.20
705.04	705.45	703.30
705.12	705.55	703.40
705.20	705.60	
705.48	705.90	
705.48	705.90	
705.38	705.80	702.50
705.44	705.87	702.70
705.52	705.93	702.60
705.58	706.00	702.30
705.80	705.91	702.47
704.50	705.50	
704.00	705.00	703.50 N. gutter
704.30	705.00	703.40
704.50	705.00	703.30
704.60	705.00	703.20 N. gutter
704.70	705.00	703.10 N. Tile
704.70	705.00	703.00 " Tile
704.90	705.00	702.90 " gutter
704.70	705.00	702.80 " gutter

EXCAV. = 331 CU. YDS.  
EMB +15% = 333 CU. YDS.  
BORROW = 2 CU. YDS.

EXCAV. = 262 CU. YDS.  
EMB +15% = 263 CU. YDS.  
BORROW = 1 CU. YD.

EXCAV. = 384 CU. YDS.  
EMB +15% = 383 CU. YDS.  
WASTE = 1 CU. YDS.

FOR ANY QUESTIONS PLEASE CONTACT ODOT DISTRICT 2 REAL ESTATE AT 419-353-8131



FOR ANY QUESTIONS PLEASE CONTACT ODOT DISTRICT 2 REAL ESTATE AT 419-353-8131

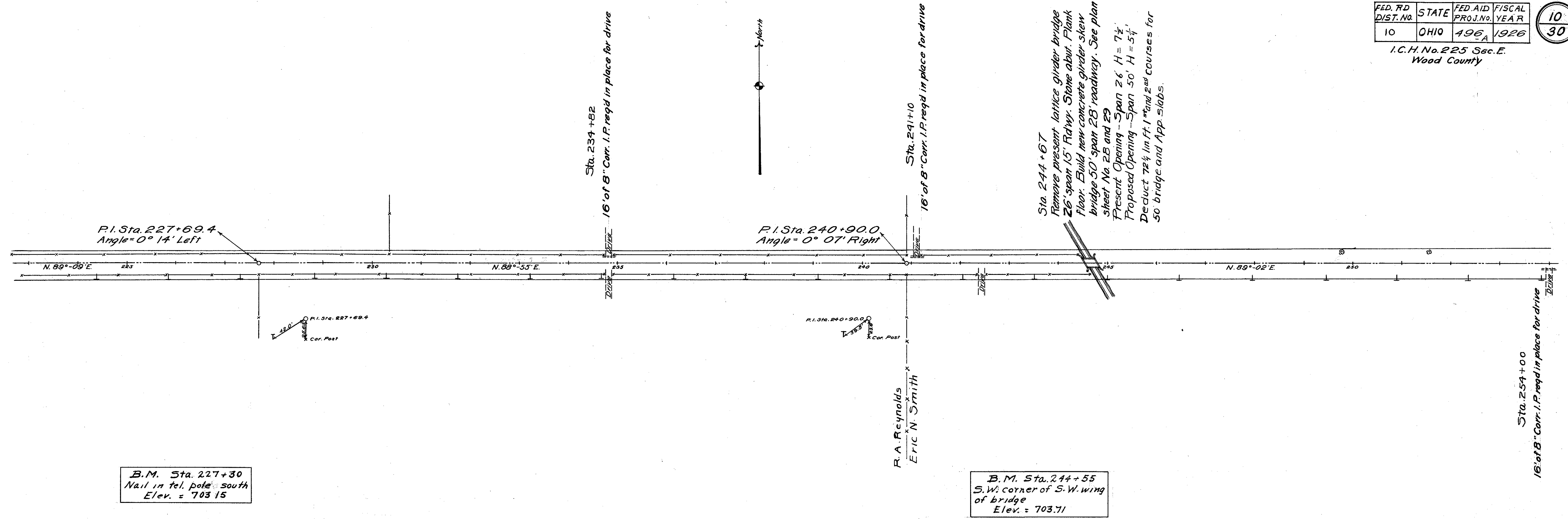
DATE	NO.	BY

DATE	NO.	BY

FED. RD DIST. NO.	STATE	FED. AID PROJ. NO.	FISCAL YEAR
10	OHIO	496-A	1926

10  
30

I.C.H. No. 225 Sec. E.  
Wood County



B.M. Sta. 227+30  
Nail in tel. pole south  
Elev. = 703.15

B.M. Sta. 244+55  
S.W. corner of S.W. wing  
of bridge  
Elev. = 703.71

STATION	SURFACE FINISHED ELEVATION GRADE	REMARKS
223	704.70	705.00
224	704.40	705.00
225	704.10	704.80
226	704.00	704.60
227	703.90	704.40
228	703.80	704.40
229	703.80	704.40
230	703.80	704.40
231	703.80	704.40
232	703.80	704.40
233	703.80	704.40
234	703.80	704.40
235	703.80	704.40
236	703.80	704.40
237	703.80	704.40
238	703.80	704.40
239	703.80	704.40
240	703.80	704.40
241	703.80	704.40
242	703.80	704.40
243	703.80	704.40
244	703.80	704.40
245	703.80	704.40
246	703.80	704.40
247	703.80	704.40
248	703.80	704.40
249	703.80	704.40
250	703.80	704.40
251	703.80	704.40
252	703.80	704.40
253	703.80	704.40
254	703.80	704.40

Sta. 216+00 - 244+55 Gutter Ditch North.

Sta. 244+70 - 267+00 Gutter Ditch S.  
Sta. 244+70 - 265+00 " Ditch N. less tile as noted.

EXCAV. = 445 CU. YDS.  
EMB. + 15% = 277 CU. YDS.  
WASTE = 168 CU. YDS.

EXCAV. = 433 CU. YDS.  
EMB. + 15% = 302 CU. YDS.  
WASTE = 131 CU. YDS.

EXCAV. = 472 CU. YDS.  
EMB. + 15% = 340 CU. YDS.  
WASTE = 132 CU. YDS.

FED. RD. DIST. NO.	STATE	FED. AID FISCAL YEAR
10	OHIO	496A 1926

I. C. H. No. 225 Sec. "E"  
Wood County

LEFT				RIGHT	
EDGE PAVE.	WIDTH	STATION	GRADE	WIDTH	EDGE PAVE.
704.90	9.00	264+38.25	705.05	9.00	704.90
705.45	9.00	+63.25	705.15	9.37	705.00
706.00	9.00	+88.25	705.25	10.44	705.10
706.55	9.00	265+13.25	705.35	12.23	705.20
707.10	9.00	+38.25	705.45	14.76	705.30
707.65	9.00	+63.25	705.55	16.45	705.40
708.20	9.00	+88.25	705.65	17.00	705.50
708.25	9.00	266+00	705.70	17.00	705.55
708.35	9.00	+25	705.80	17.00	705.65
708.45	9.00	+50	705.90	17.00	705.75
708.55	9.00	+75	706.00	17.00	705.85
708.65	9.00	267+00	706.10	17.00	705.95
708.75	9.00	+25	706.20	17.00	706.05
708.85	9.00	+50	706.30	17.00	706.15
708.95	9.00	+75	706.40	17.00	706.25
709.05	9.00	+94.52	706.48	17.00	706.33
709.04	9.00	268+19.32	706.54	16.45	706.39
708.24	9.00	+44.52	706.59	14.76	706.44
707.84	9.00	+69.52	706.64	12.23	706.49
706.44	9.00	+94.52	706.69	10.44	706.54
707.00	9.00	269+19.32	706.70	9.37	706.55
706.55	9.00	+44.52	706.70	9.00	706.55

291.7 Sq. Yds. Extra Pavement

$\Delta = 88^\circ - 40'$   
 $D = 28^\circ - 57'$   
 $R = 200.00'$   
 $T = 195.40'$   
 $L = 306.27'$

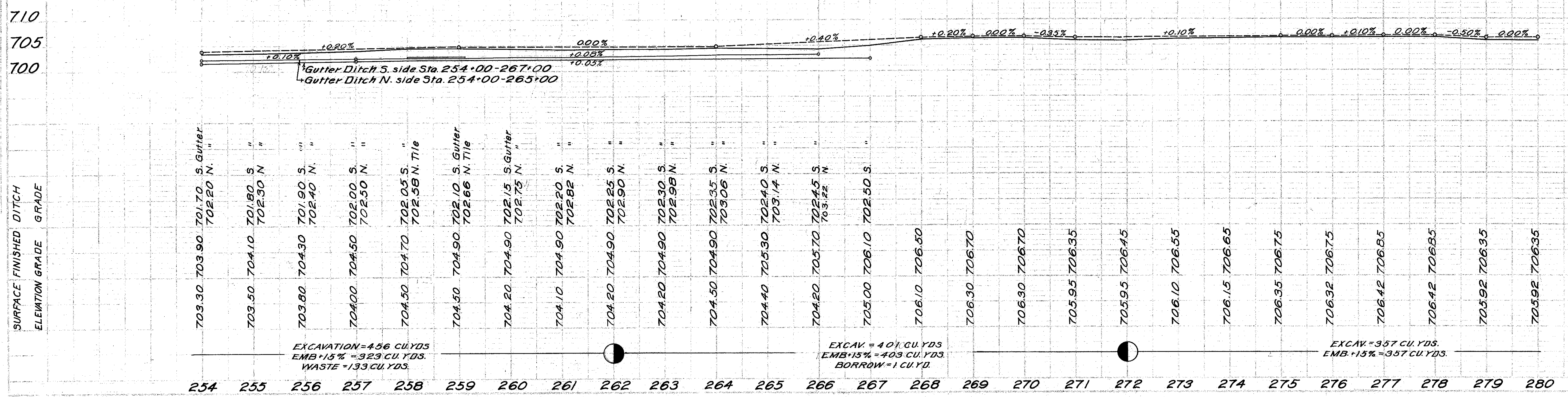
B.M. Sta. 258+80  
Top of S. E. corner of concrete porch of house north  
El. = 706.41

B.M. Sta. 267+33  
Top of center of N. concrete headwall of Culv. to Rt. of P.I.  
Elev. = 704.84

Note - 80 tons stone required to build up present base for super-elevation

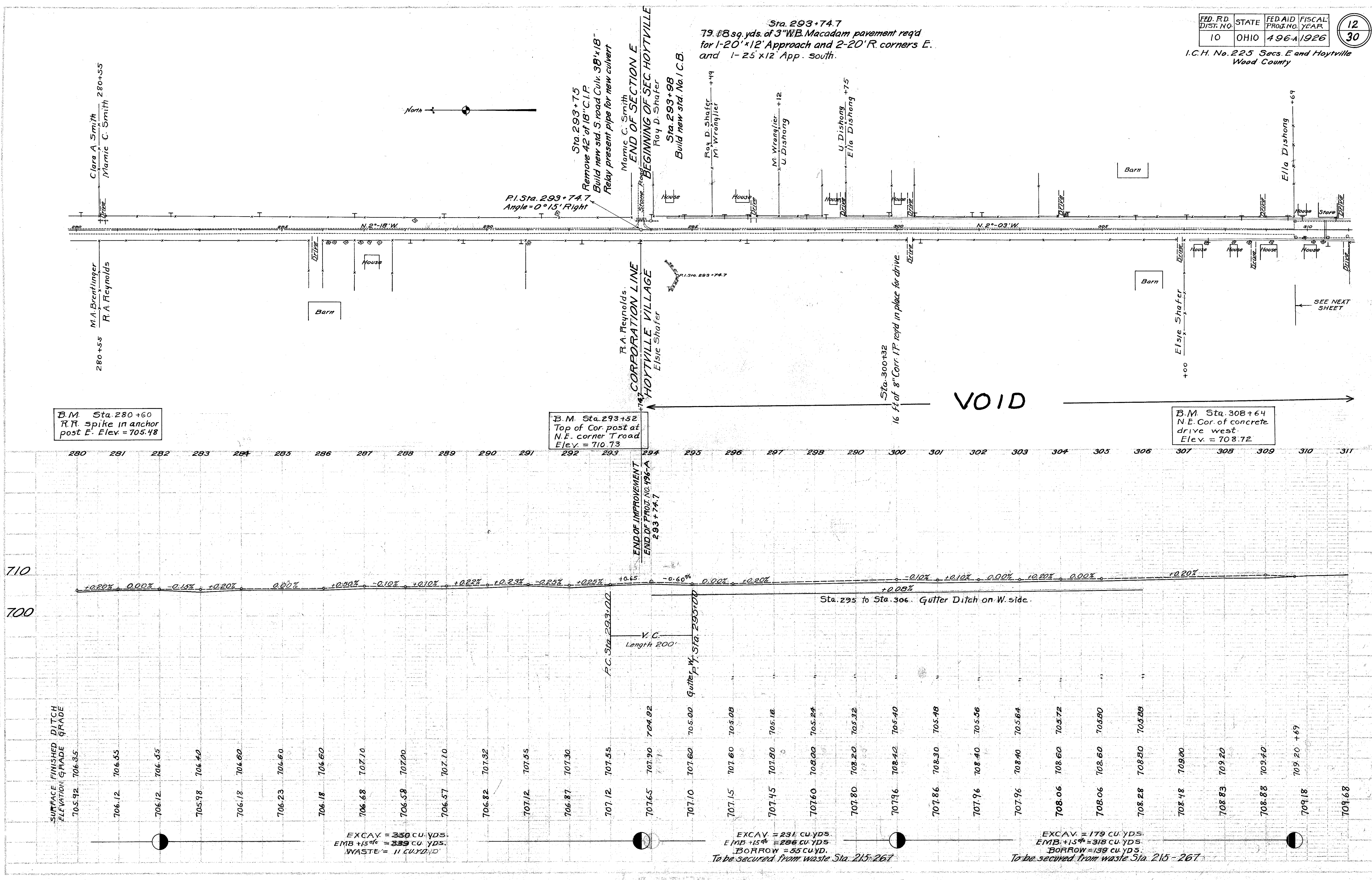
35 Tons stone and 120.0 sq. yds. of 3" W.B. Macadam required for rebuilding a 50' Approach to connect curve with present macadam road as shown

Detail of road at Sta. 267+33.65 showing proposed plan of improvement Short Sta. 15.47 Extra Pavement 291.7 sq. yds. Borrow 370 cu. yds. earth fill - To be secured from waste, Sta. 215-267



FOR ANY QUESTIONS PLEASE CONTACT ODOT DISTRICT 2 REAL ESTATE AT 419-353-8131

DATE: 10/10/25  
 DRAWN BY: [Name]  
 CHECKED BY: [Name]  
 PROJECT: [Name]



B.M. Sta. 280+60  
 R.R. spike in anchor  
 post E. Elev. = 705.48

B.M. Sta. 293+52  
 Top of Cor. post at  
 N.E. corner T road  
 Elev. = 710.73

B.M. Sta. 308+64  
 N.E. Cor. of concrete  
 drive west.  
 Elev. = 708.72

SURFACE FINISHED  
 DITCH  
 ELEVATION GRADE GRADE

705.92	706.12	706.12	705.98	706.18	706.23	706.18	706.68	706.58	706.57	706.82	707.12	706.87	707.12	707.10	707.15	707.65	707.10	707.15	707.45	707.60	707.80	707.96	707.86	707.96	707.96	708.06	708.06	708.28	708.48	708.83	708.88	709.18	709.68
--------	--------	--------	--------	--------	--------	--------	--------	--------	--------	--------	--------	--------	--------	--------	--------	--------	--------	--------	--------	--------	--------	--------	--------	--------	--------	--------	--------	--------	--------	--------	--------	--------	--------

EXCAV. = 350 CU. YDS.  
 EMB. +15% = 339 CU. YDS.  
 WASTE = 11 CU. YD.

EXCAV. = 231 CU. YDS.  
 EMB. +15% = 206 CU. YDS.  
 BORROW = 55 CU. YD.  
 To be secured from waste Sta. 215-267

EXCAV. = 179 CU. YDS.  
 EMB. +15% = 318 CU. YDS.  
 BORROW = 139 CU. YDS.  
 To be secured from waste Sta. 215-267