

O.D.O.T. DISTRICT 2 SURVEY OFFICE (USE ONLY)

PERSONNEL _____ REFERENCE NO. 5 SHEET 5 OF 15
 NOTES RHOADES DATE 6-12-20 ROUTE SR 18
 H.C. AUBLE WEATHER SUNNY COUNTY WOOD
 R.C. MAHLER TEMP. 66°F TOWNSHIP JACKSON
O'DONNELL SECTION 20
 DWG BY MAHLER PID PAVE TRAIN T 3 N R 9 E

TYPE MONUMENT MAG/WASHER

ON SURFACE - ~~BELOW~~ ON _____

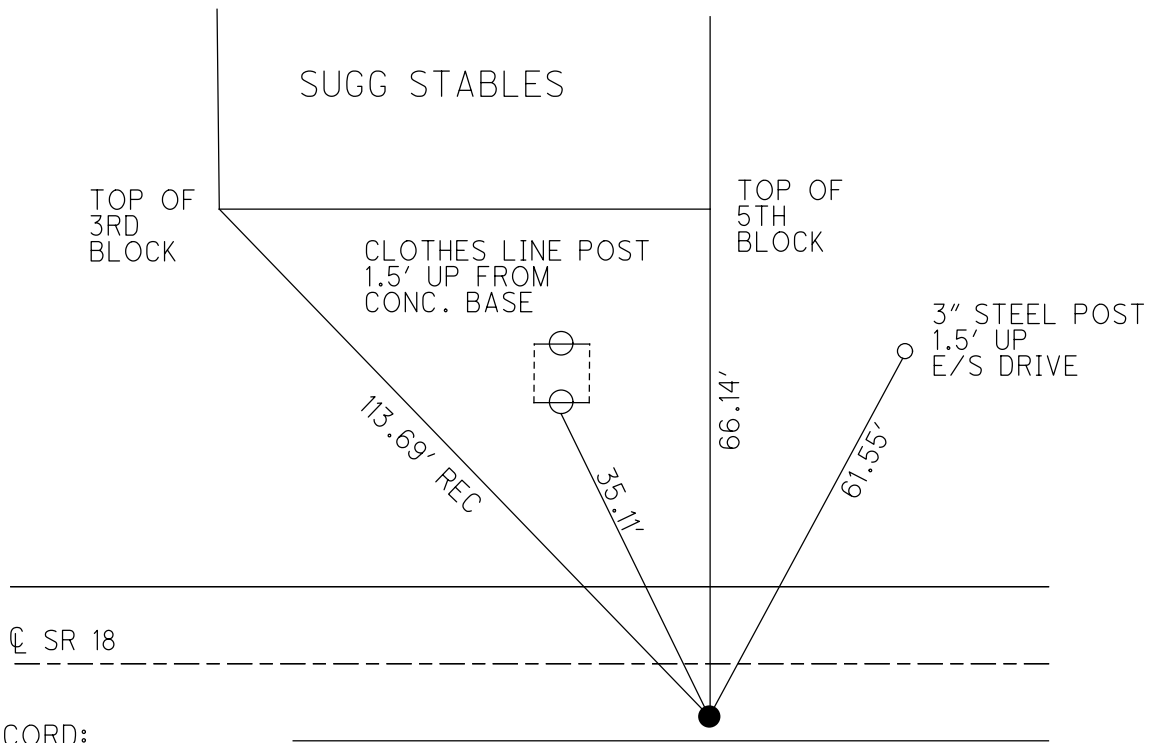
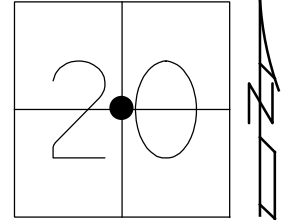
OFFSET C PAVEMENT 6.6' ~~ET~~ : RT

3.1' TO RT EDGE PAVEMENT

STATION: 82+62

HORIZ.DATUM: NAD83 (2011) GEOID: NAVD88-2012A

GRID: NORTHING: 563154.306 EASTING: 1596559.680

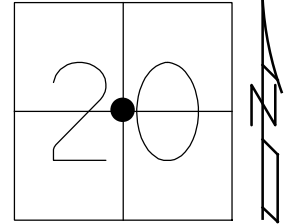


RECORD:
 FD SM.R.R.SPIKE
 4" DOWN
 SET MAG/WASHER
 6-29-05, DCH
 REF4
 9-04-15, DCH
 FD MAG/WASHER
 REF5
 6-12-20, JFO
 SET MAG/WASHER
 NEWREF5
 9-16-21, JFO

O.D.O.T. DISTRICT 2 SURVEY OFFICE (USE ONLY)

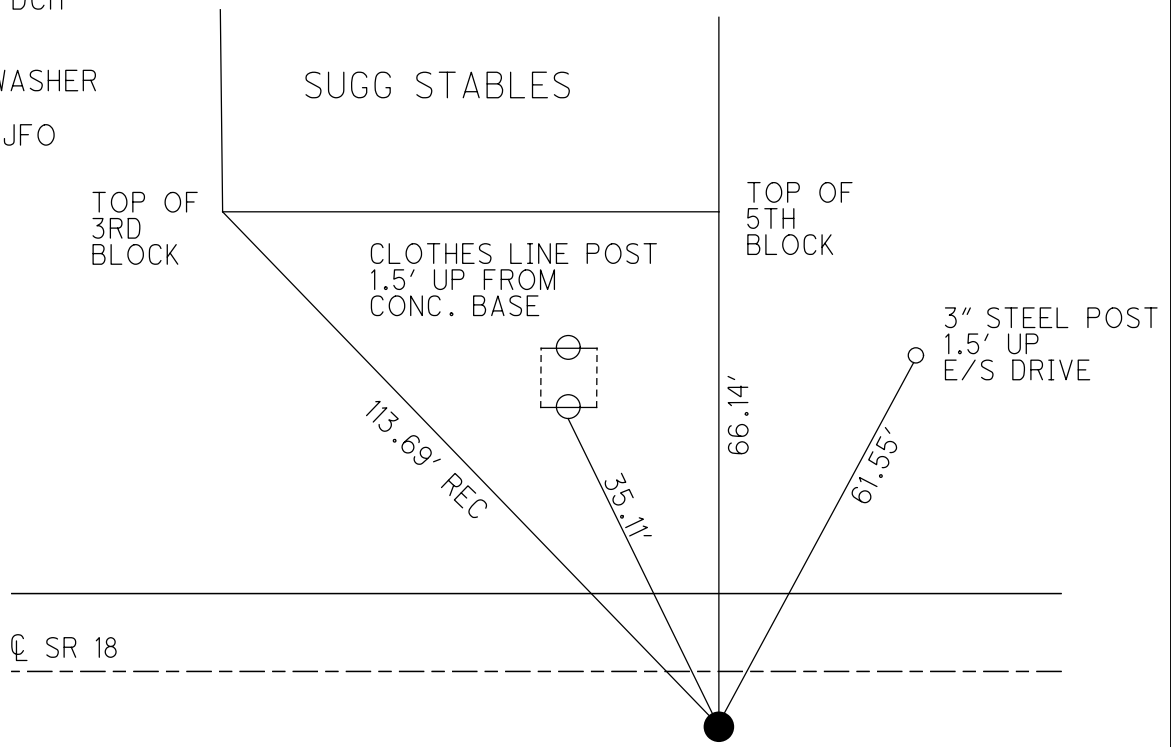
PERSONNEL _____ REFERENCE NO. 5 SHEET 5 OF 13
 NOTES RHOADES DATE 6-12-20 ROUTE SR 18
 H.C. AUBLE WEATHER SUNNY COUNTY WOOD
 R.C. MAHLER TEMP. 66°F TOWNSHIP JACKSON
O'DONNELL SECTION 20
 DWG BY MAHLER PID PAVE TRAIN T 3 N R 9 E

TYPE MONUMENT MAG/WASHER
 ON SURFACE - ~~BELOW~~ ON
 OFFSET ☐ PAVEMENT 6.6' ~~LT~~ : RT
3.1' TO RT EDGE PAVEMENT
 STATION: 82+62



HORZ. DATUM: NAD83 (2011) GEOID: NAVD88-2012A
 GRID: NORTHING: 563154.309 EASTING: 1596559.655

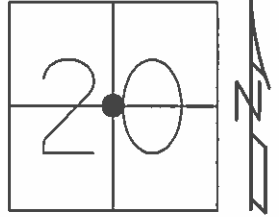
RECORD:
 FD SM. RR. SPIKE
 4" DOWN
 SET MAG/WASHER
 6-29-05, DCH
 REF 4
 9-04-15
 FD MAG/WASHER
 REF5
 6-12-20, JFO



O.D.O.T. DISTRICT 2 SURVEY OFFICE (USE ONLY)

PERSONNEL _____ REFERENCE NO. 5 SHEET 5 OF 13
 NOTES LEU DATE 09-04-15 ROUTE SR 18
 H.C. HOMAN WEATHER PTLY CLOUDY COUNTY WOOD
 R.C. LEU TEMP. 78°F TOWNSHIP JACKSON
 _____ SECTION 20
 _____ T 3 N R 9 E

TYPE MONUMENT MAG/WASHER
 ON SURFACE - ~~BELOW~~ ON
~~LEFT~~ = ☉ PAV'T - RIGHT 6.6'
3.1' TO RT EDGE PAVEMENT
 S.L.M. 82+62

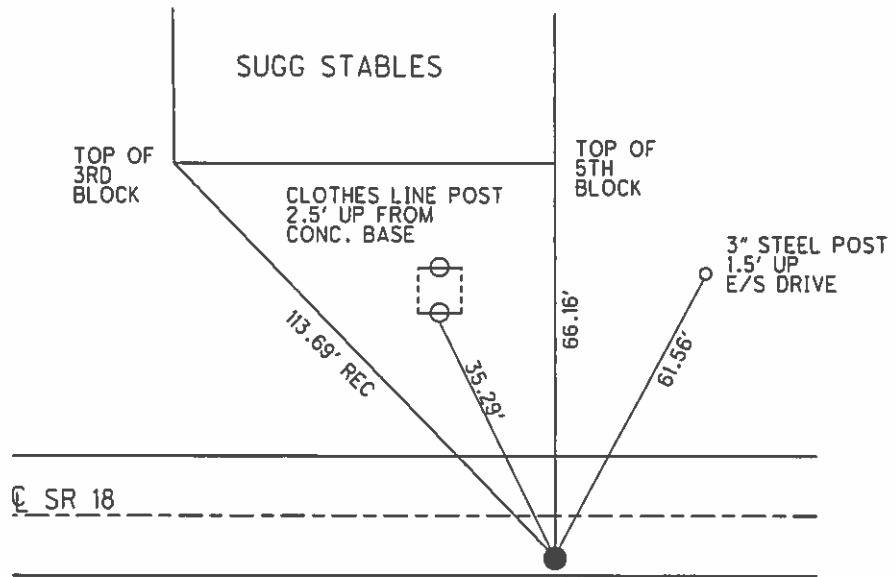


GRID: NORTHING: 563154.32 EASTING: 1596559.68

RECORD:
 FD SM. RR. SPK.
 4" DOWN

SET MAG/WASHER
 6-29-05, DCH

GPS, REF 4
 09-04-15



O.D.O.T. DISTRICT 2 SURVEY OFFICE

PERSONNEL

REFERENCE NO. 5

SHEET 4 OF 14

NOTES STEVE

DATE 04-11-05

ROUTE S.R. 18

H.C. DUANE

WEATHER CLOUDY

COUNTY WOOD

R.C. JOE

TEMP. 55°

TOWNSHIP JACKSON

SECTION 20

T 3 N R 9 E

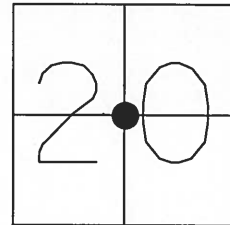
TYPE MONUMENT PK & WASHER

ON SURFACE - ~~BELOW~~ ON

~~LEFT - C PAVT~~ - RIGHT 6.6'

3.1' TO RT EDGE PAVEMENT

S.L.M. 82+62



RESET MAG & WASHER
6-29-05
DCH

FD SMALL RR SPIKE
4" DOWN

SUGG
STABLES

TOP OF
3RD
BLOCK

TOP OF
5TH
BLOCK

1.5' UP
3" STEEL
POST
E/S DRIVE

CLOTHES
LINE
POST
2.5' UP
FROM
CONC.
BASE

113.69' REC

66.10'

61.50'

35.03'

C PAVT

S.R. 18

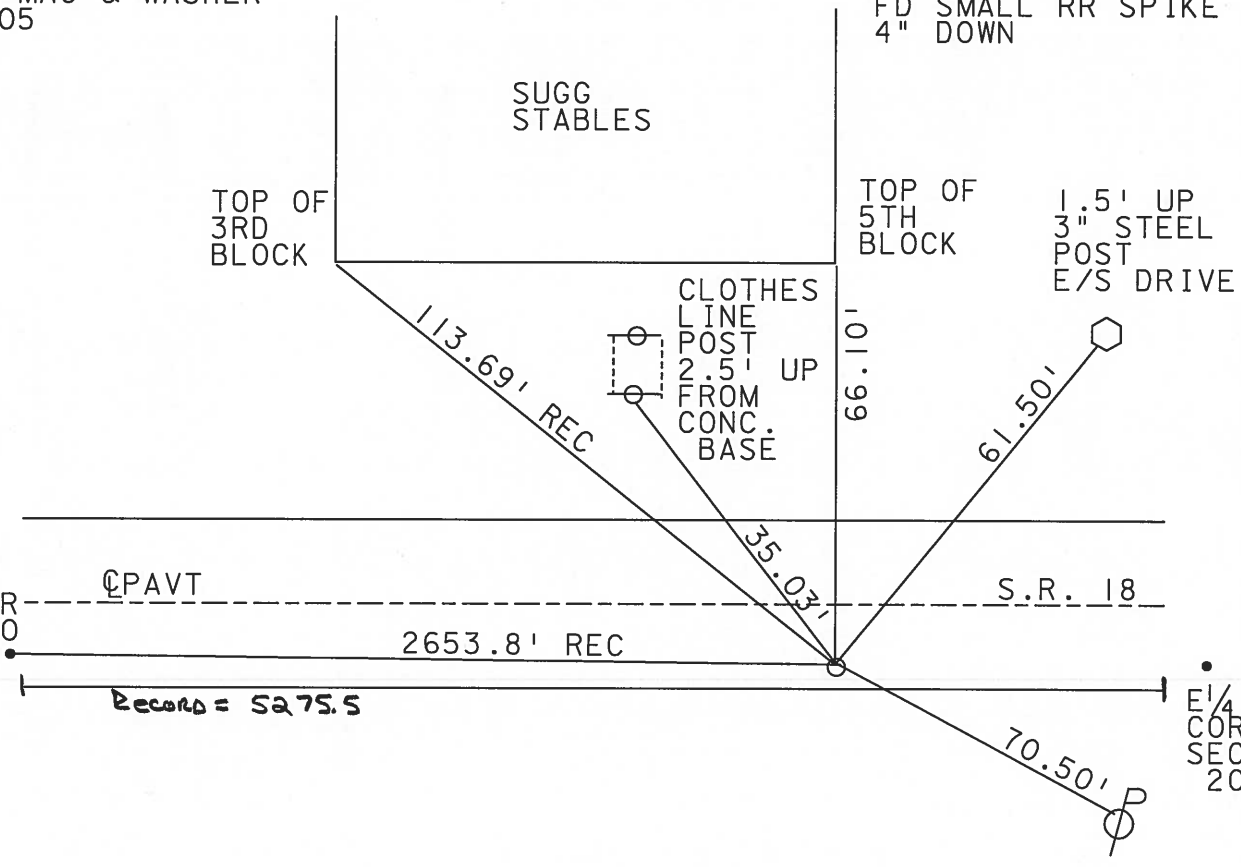
N 1/4 COR
SEC 20

2653.8' REC

Record = 5275.5

70.50' P

E 1/4
COR
SEC 20



O.D.O.T. DISTRICT 2 SURVEY OFFICE

PERSONNEL _____

REFERENCE NO. 5

SHEET _____ OF _____

NOTES BARNHISEL

H.C. Loehke

DATE 3-19-91

ROUTE 18

R.C. HOFFMAN

WEATHER cloudy - Windy

COUNTY HENRY

TEMP. +40°

TOWNSHIP JACKSON

SECTION 20

T 3 NR 9 E

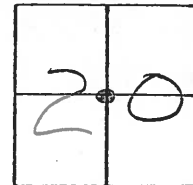
TYPE MONUMENT P.K. & Washer

ON SURFACE - BELOW yes

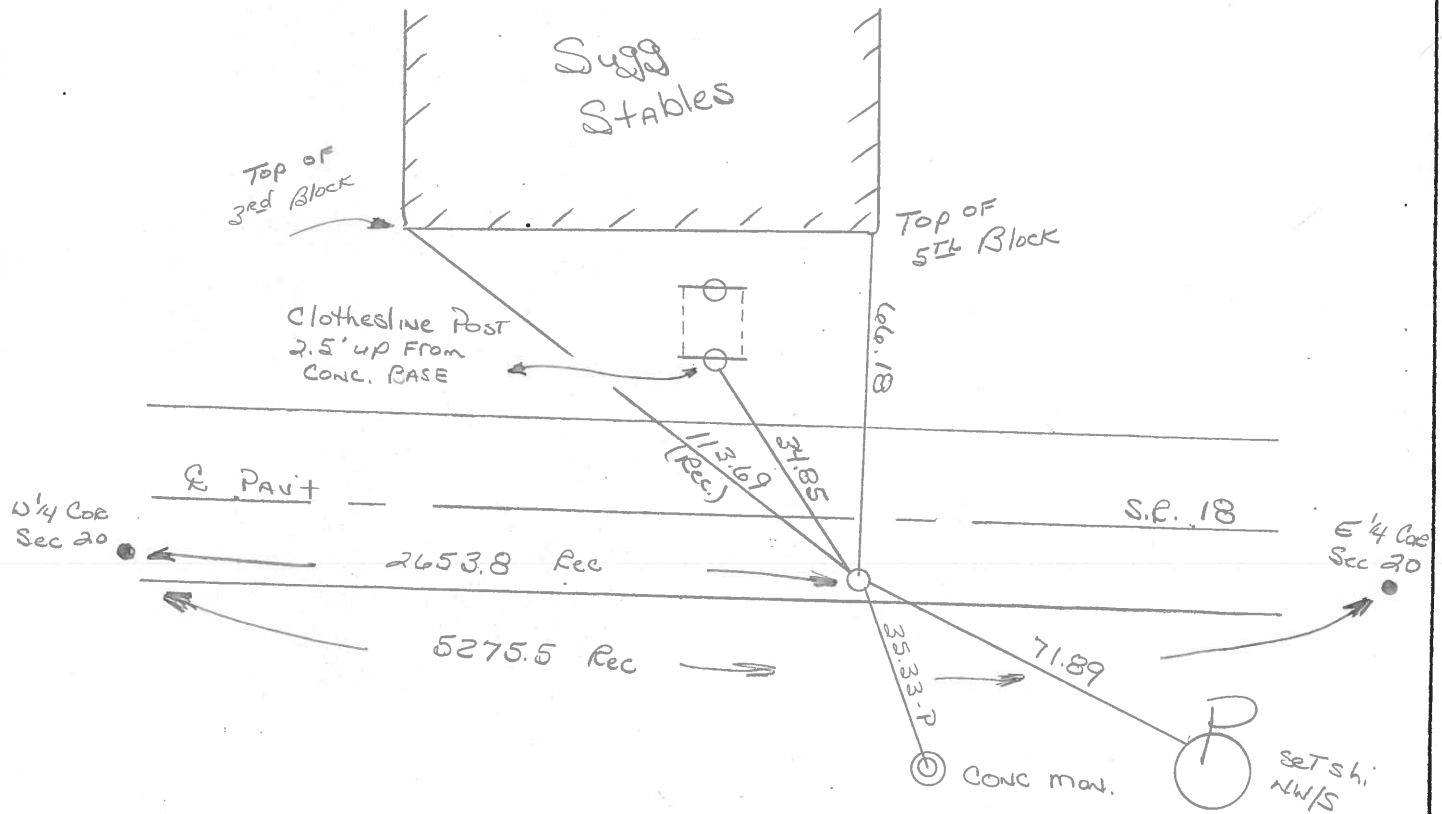
LEFT - CL PAV'T. - RIGHT 6.7

3.7 TO RT EDGE PAVEMENT

S.L.M. 82+52



Set P.K. & Washer
4-17-91
m/s



Q.D.O.T. DISTRICT 2 SURVEY OFFICE

SHEET 5 OF

County WOOD S.R. 18

Date 11-25-83

Township JACKSON

Weather CLEAR, WINDY

Section 20

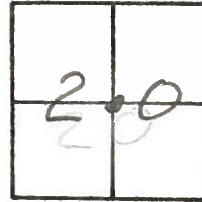
Temp. +34

T3N, R9E

Personnel BARNHISEL H.C.

HOUSEHOLDER R.C.

LOEHRKE



FD. Small R.R. SPIKE @ SURFACE

SET PK + WASHER

6.5' Rt of & S.R. 18,

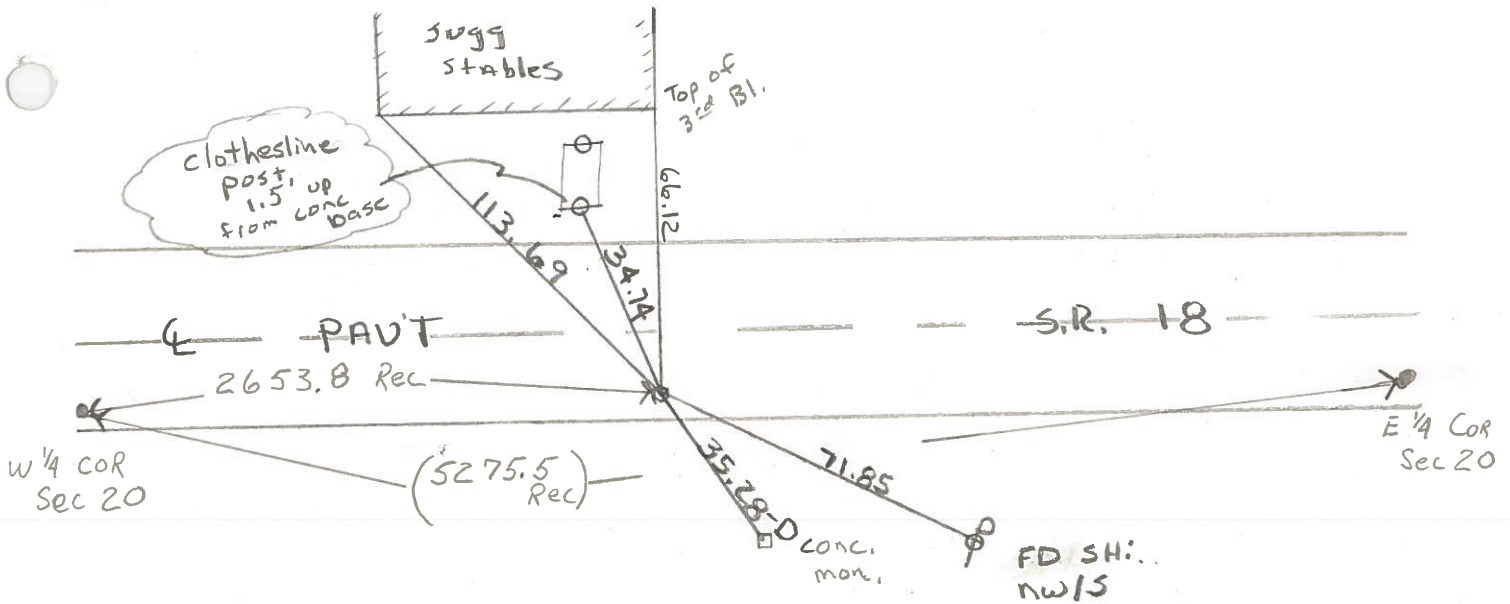
7-25-85

+ 2.5' Lt of SEP.

C.L.

#5

S.L.M. 82+41



County WOOD S.R. 18

Date 5-30-74

Township JACKSON

Weather CLEAR

Section 20

Temp. 80°

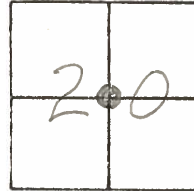
T3N, R9E

Personnel BURNSIDE

SMITH

BOWERS

MEAD



#5

MEAS. 5297.25'

