

O.D.O.T. DISTRICT 2 SURVEY OFFICE (USE ONLY)

PERSONNEL

REFERENCE NO. 11

SHEET 12 OF 15

NOTES RHOADES

DATE 6-12-20

ROUTE SR 18

H.C. AUBLE

WEATHER SUNNY

COUNTY WOOD

R.C. MAHLER

TEMP. 66°F

TOWNSHIP JACKSON

O'DONNELL

SECTION 23

DWG BY MAHLER

PID PAVE TRAIN

T 3 N R 9 E

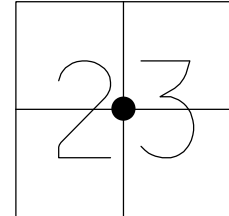
TYPE MONUMENT MAG/WASHER

ON SURFACE - ~~BELOW~~ ON

OFFSET 5.7' RT : RT

4.0' TO RT EDGE PAVEMENT

STATION: 241+43



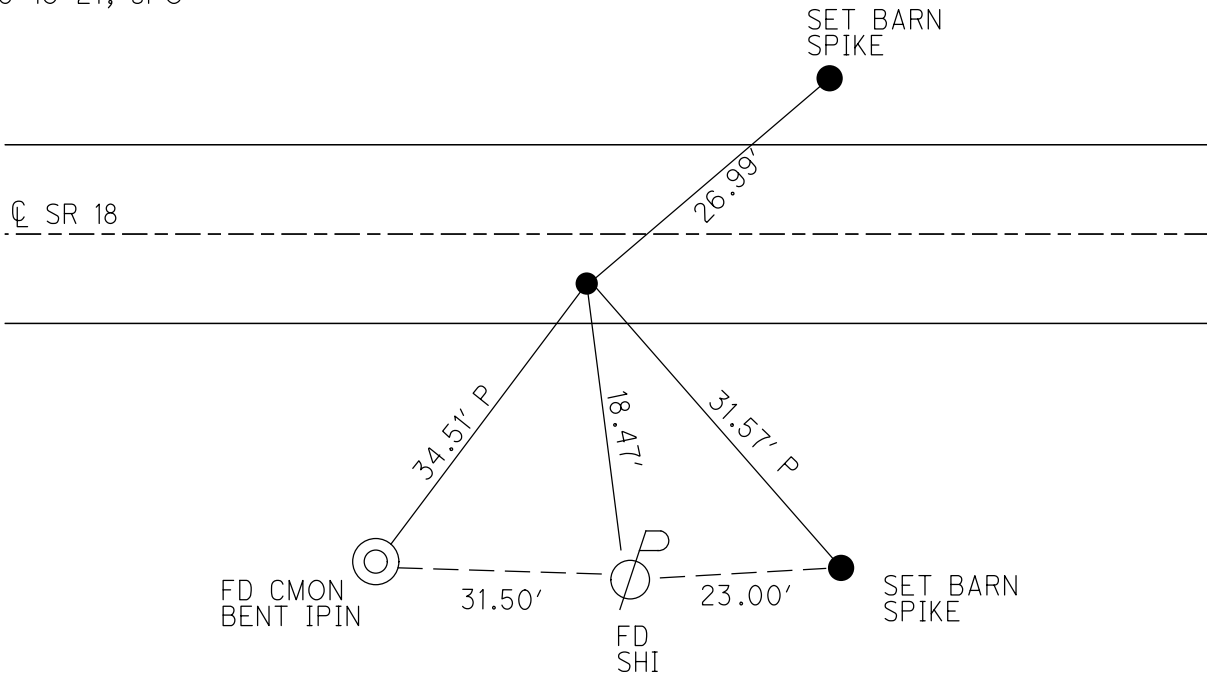
HORIZ.DATUM: NAD83 (2011)

GEOID: NAVD88-2012A

GRID: NORTHING: 562922.421

EASTING: 1612443.484

RECORD:
 SET MAG/WASHER
 6-19-05, DCH
 REF11, 9-04-15
 FD MAG/WASHER
 REF11
 6-12-20
 9-16-21, JFO



O.D.O.T. DISTRICT 2 SURVEY OFFICE (USE ONLY)

PERSONNEL

REFERENCE NO. 11

SHEET 12 OF 13

NOTES RHOADES

DATE 6-12-20

ROUTE SR 18

H.C. AUBLE

WEATHER SUNNY

COUNTY WOOD

R.C. MAHLER

TEMP. 66°F

TOWNSHIP JACKSON

O'DONNELL

SECTION 23

DWG BY MAHLER

PID PAVE TRAIN

T 3 N R 9 E

TYPE MONUMENT MAG/WASHER

ON SURFACE - ~~BELOW~~ ON

OFFSET 4.0' TO RT EDGE PAVEMENT

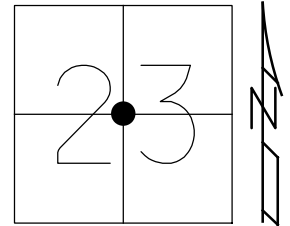
STATION: 241+43

HORZ.DATUM: NAD83 (2011)

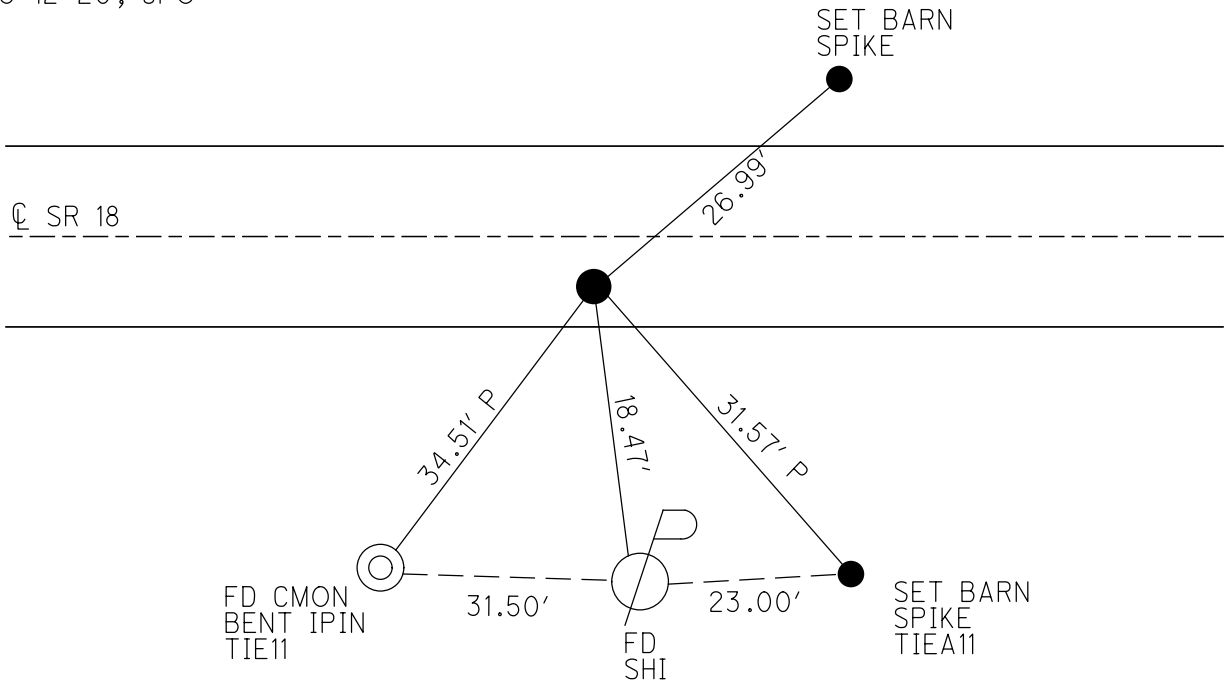
GEOID: NAVD88-2012A

GRID: NORTHING: 562922.421

EASTING: 1612443.484



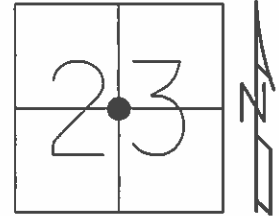
RECORD:
 SET MAG/WASHER
 6-19-05, DCH
 REF11
 9-04-15
 FD MAG/WASHER
 REF11
 6-12-20, JFO



O.D.O.T. DISTRICT 2 SURVEY OFFICE (USE ONLY)

PERSONNEL _____ REFERENCE NO. 11 SHEET 12 OF 13
 NOTES LEU DATE 09-04-15 ROUTE SR 18
 H.C. HOMAN WEATHER PTLY CLOUDY COUNTY WOOD
 R.C. LEU TEMP. 85°F TOWNSHIP JACKSON
 _____ SECTION 23
 _____ T 3 N R 9 E

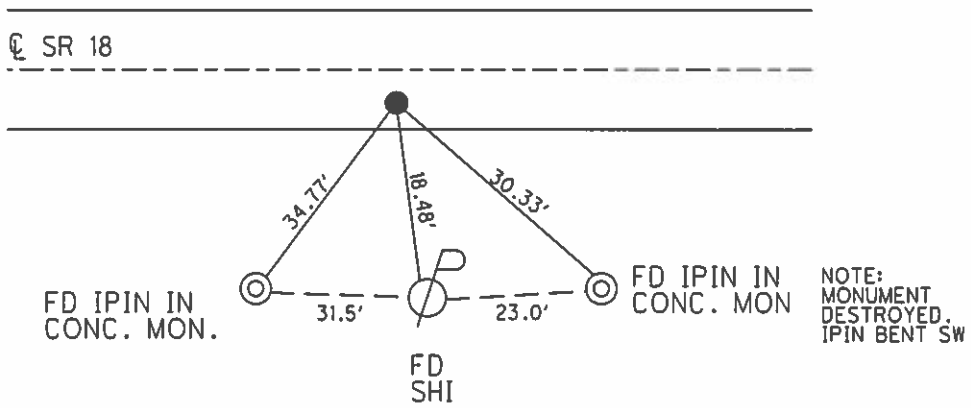
TYPE MONUMENT MAG/WASHER
 ON SURFACE - ~~BELOW~~ ON
~~LEFT~~ - CL PAV'T - RIGHT 5.7'
4.0' TO RT. EDGE PAVEMENT
 S.L.M. 241+43



GRID: NORTHING: 562922.35 EASTING: 1612443.52

RECORD:
 SET MAG/WASHER
 6-19-05, DCH

GPS, REF11
 09-04-15



O.D.O.T. DISTRICT 2 SURVEY OFFICE

PERSONNEL

REFERENCE NO. 11

SHEET 11 OF 14

NOTES STEVE

DATE 4-11-05

ROUTE S.R. 18

H.C. JOE

WEATHER CLOUDY

COUNTY WOOD

R.C. DUANE

TEMP. 58°

TOWNSHIP JACKSON

SECTION 23

T 3 N R 9 E

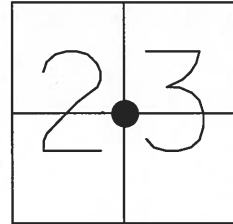
TYPE MONUMENT PK & WASHER

ON SURFACE - ~~BELOW~~ ON

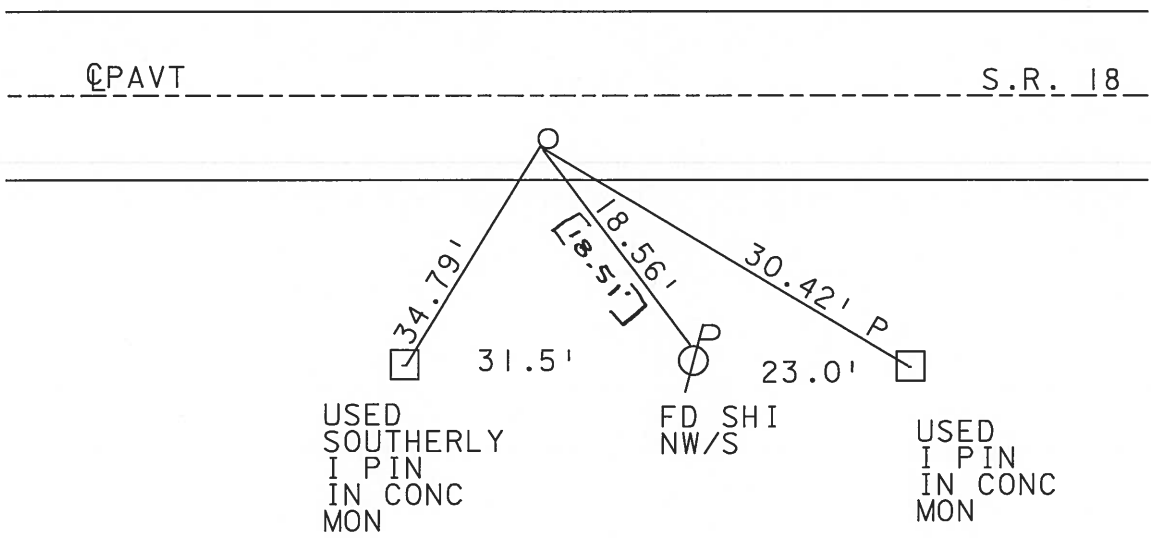
~~LEFT - Q PAVT~~ - RIGHT 5.7'

4.0' TO RT EDGE PAVEMENT

S.L.M. 241+43



RESET MAG & WAHER
6-19-05
DCH



O.D.O.T. DISTRICT 2 SURVEY OFFICE

PERSONNEL

REFERENCE NO. 11

SHEET OF

NOTES BARNHISEL

H.C. Loeber

DATE 3-19-91

ROUTE 18

R.C. NEFFMAN

WEATHER cloudy-windy

COUNTY WOOD

TEMP. +45°

TOWNSHIP JACKSON

SECTION 23

T 3 N 9 E

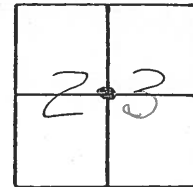
TYPE MONUMENT P.K. & Washer

ON SURFACE - ~~BELOW~~ yes

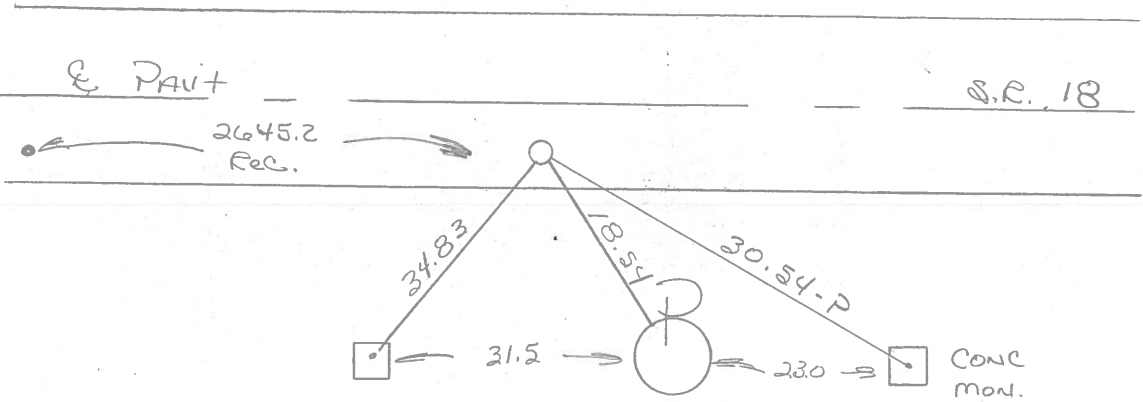
LEFT - ~~PAV'T.~~ - RIGHT 5.6

4.4 TO RT EDGE PAVEMENT

S.L.M. 241+42



Set P.K./Washer
 4-17-91
 MB



NOTE: THERE ARE "2" IRON RODS
 IN BOTH MONU., WE USED THE ONE'S
 WE CUT OFF A "2" ABOVE THE CONC.

ODOT. DISTRICT 2 SURVEY OFFICE

SHEET 11 OF

County WOOD S.R. 18

Date 11-25-83

Township JACKSON

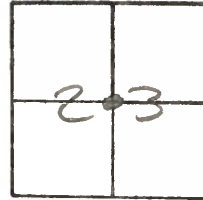
Weather CLEAR WINDY

Section 23

Temp. +41°

T3N, R9E

Personnel BARNHISEL HC
HOUSEHOLDER R.C
LOEMRKE AD



Fd RR SPIKE @ SURFACE

SLM 241726

5.5 Rtof Q 18

3.7 Ltof SEP

SET PK+WASHEIZ #11

7-25-85

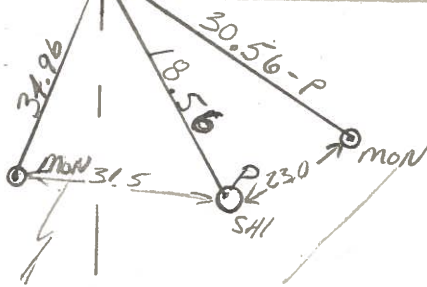
CL

N-S CTR SEC 23



W 1/4 CORNER
Sec 23

E 1/4 COR
Sec 23



NOTE: IRON PINS IN
BOTH MONS. BENT
 MEASUREMENTS TAKEN TO
 H WHERE PIN GOES INTO
 CONCRETE

County WOOD S.R. 18

Date 6-17-74

Township JACKSON

Weather CLOUDY

Section 23

Temp. 60°

T3N, R9E

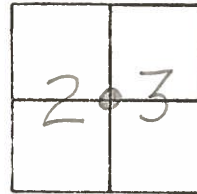
Personnel BURNSIDE

SMITH

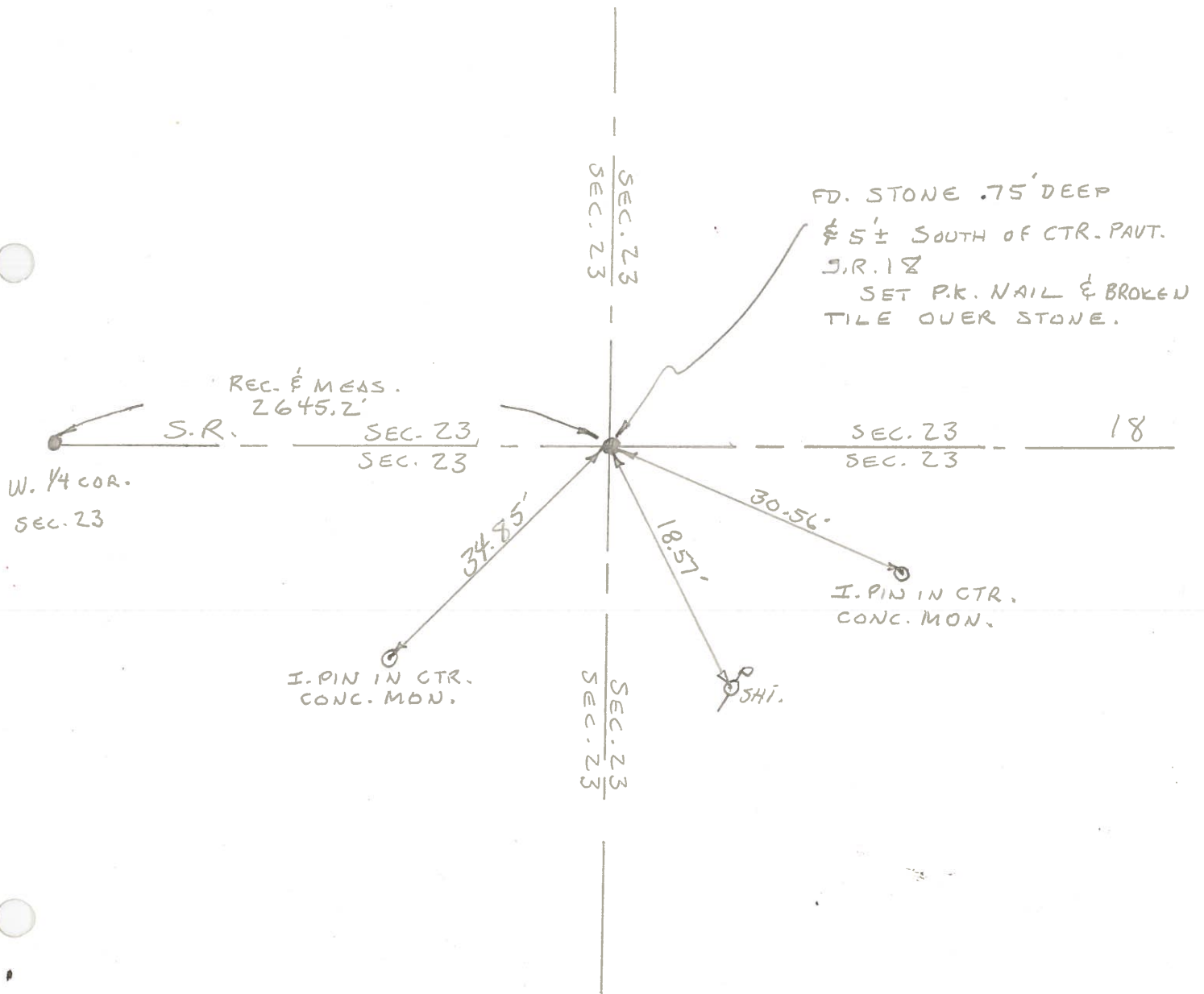
BOWERS

MEAD

KIJOWSKI



#11



PERSONNEL TITLE PERSONNEL TITLE PERSONNEL TITLE PERSONNEL TITLE
 DATE DATE DATE DATE DATE DATE
 #18
 Ruffler
 WEATHER
 SECS TEMP

DESCRIPTION ON SOL LEFT CENTER LINE RIGHT JOB NO. (1960)

Int. 1/4 post sec. 23 Jackson Twp. Stone
 gone Conc. mon. N.E. from Stone 3
 Conc. mon N.W. from Stone 28

#112

E 1/4 post sec. 23 Jackson Twp. Stone
 OK 12-13-57 Found Bolt S.P. #18 & 69
 2nd Conc. block below E.N.E. Conc block porch 64
 Shiner in 24" Hickory S.E. 54
 Shiner in 12" Hickory N.W. 47
 Shiner in 30" maple N.E. 55
 Shiner in 20" maple E. 65

#113

S.E. Cor. sec. 23 Jackson Twp. Stone - P.R. spk. Set. Ed. Needles Ed.
 OK 12-13-57 Needles Ed.
 Conc. mon. N.W. 28
 Conc. mon. N.E. 36
 Elm mon. S.E. 38
 N.E. Cor. Hdwl. S.W. 29
 Shiner 12" Red Cedar N.E. 64
 Shiner 18" Box Elder E.N.E. 55
 Shiner P. Pole S.S.E. 93

#114

E 1/4 sec. 26 Haysville Iron pin
 Ties check 12-13-57
 Pump N.W. 40
 Maple S.W. 38
 Intersection of walks S.E. 41

#115

S.E. Cor. sec. 26 Jackson Twp. Stone 30' E of P.L. & N.S. of 2 of Survey
 No. ties - 12-13-57
 N.E. Cor. E. Conc. Hdwl. S.E. 29
 N.W. Cor. W. Conc. Hdwl. S.W. 32

#116