

O.D.O.T. DISTRICT 2 SURVEY OFFICE (USE ONLY)

PERSONNEL

REFERENCE NO. 12

SHEET 13 OF 15

NOTES RHOADES DATE 6-12-20
 H.C. O'DONNELL WEATHER SUNNY
 R.C. MAHLER TEMP. 73°F

ROUTE SR 18
 COUNTY WOOD
 TOWNSHIP JACKSON
 SECTION 23
 T 3 N R 9 E

DWG BY MAHLER PID PAVE TRAIN

TYPE MONUMENT MAG/WASHER

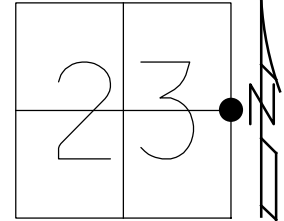
ON SURFACE - ~~BELOW~~ ON

OFFSET CL PAVEMENT 1.0'

- TO - EDGE PAVEMENT

STATION: 267+94

RT : RT

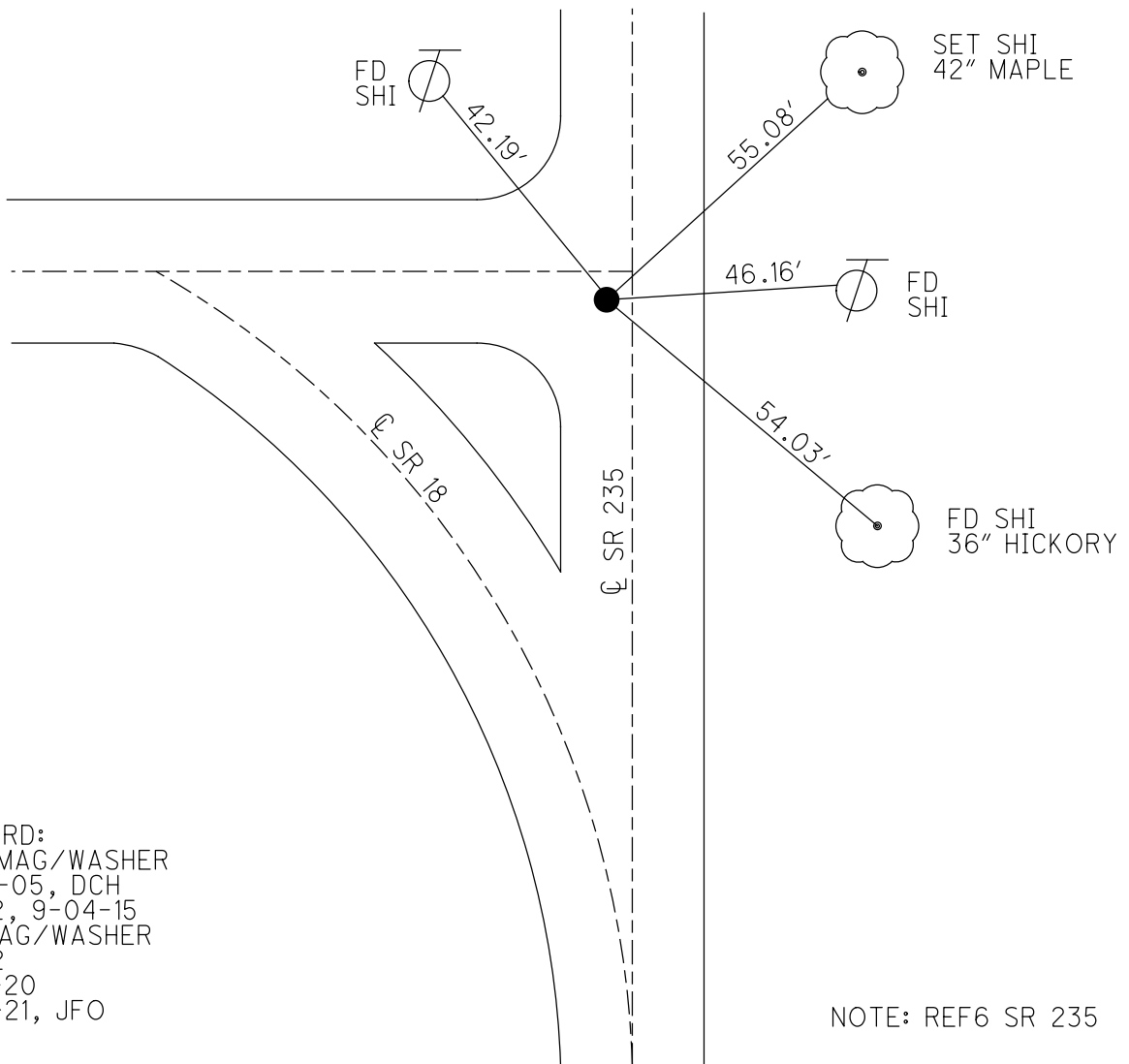


HORIZ. DATUM: NAD83 (2011)

GEOID: NAVD88-2012A

GRID: NORTHING: 562849.858

EASTING: 1615087.899



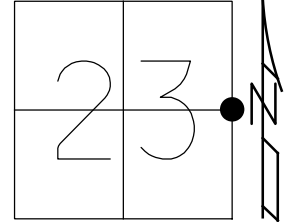
RECORD:
 SET MAG/WASHER
 7-26-05, DCH
 REF12, 9-04-15
 FD MAG/WASHER
 REF12
 6-12-20
 9-16-21, JFO

NOTE: REF6 SR 235

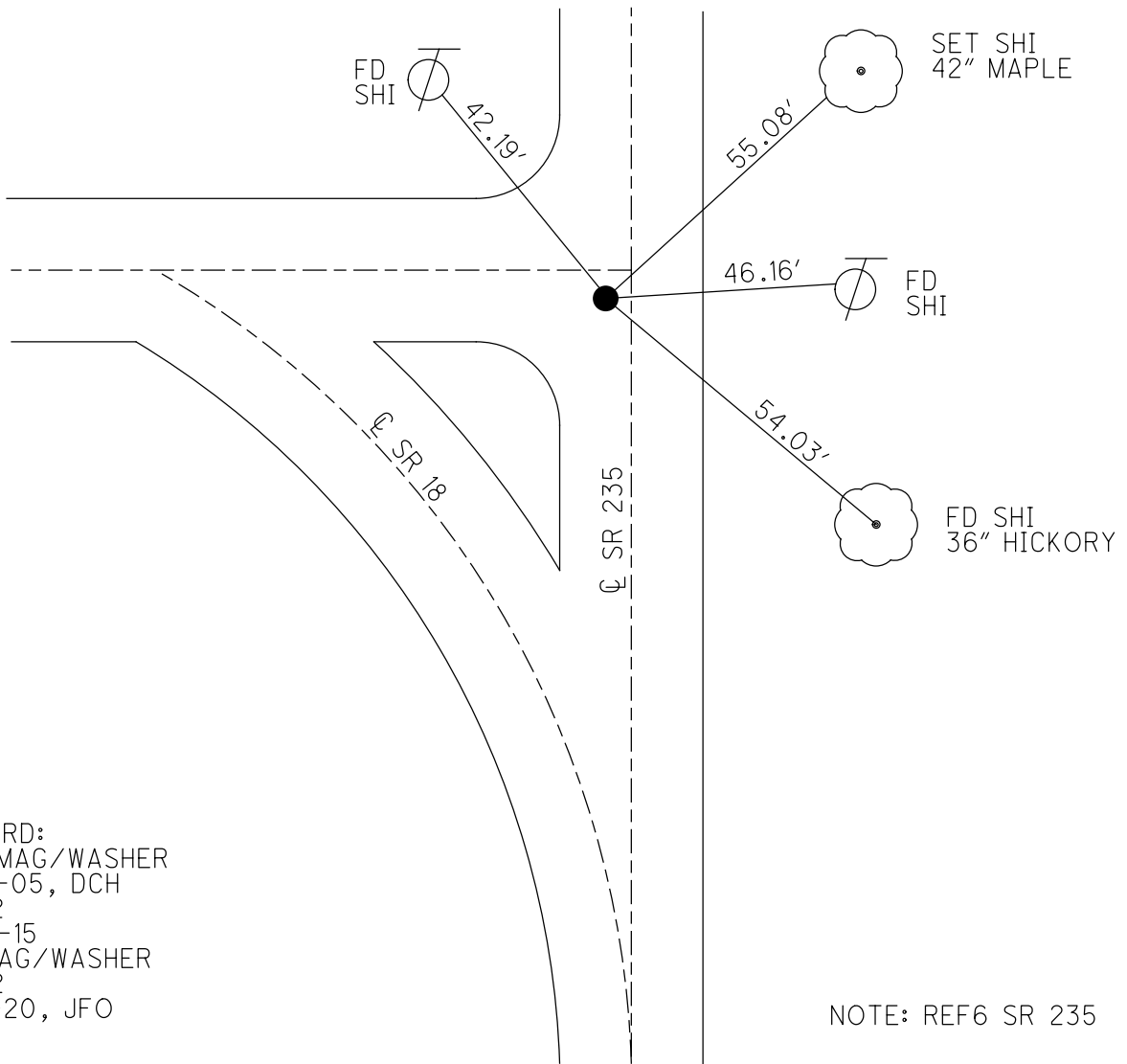
O.D.O.T. DISTRICT 2 SURVEY OFFICE (USE ONLY)

PERSONNEL _____ REFERENCE NO. 12 SHEET 13 OF 13
 NOTES RHOADES DATE 6-12-20 ROUTE SR 18
 H.C. O'DONNELL WEATHER SUNNY COUNTY WOOD
 R.C. MAHLER TEMP. 73°F TOWNSHIP JACKSON
 SECTION 23
 DWG BY MAHLER PID PAVE TRAIN T 3 N R 9 E

TYPE MONUMENT MAG/WASHER
 ON SURFACE - ~~BELOW~~ ON _____
 OFFSET C PAVEMENT 1.0', 1.2' W OF C SR 235 ~~RT~~ : RT
 - TO - EDGE PAVEMENT
 STATION: 267+94



HORZ.DATUM: NAD83 (2011) GEOID: NAVD88-2012A
 GRID: NORTHING: 562849.858 EASTING: 1615087.899



RECORD:
 SET MAG/WASHER
 7-26-05, DCH
 REF12
 9-04-15
 FD MAG/WASHER
 REF12
 6-12-20, JFO

NOTE: REF6 SR 235

O.D.O.T. DISTRICT 2 SURVEY OFFICE (USE ONLY)

PERSONNEL _____ REFERENCE NO. 12 SHEET 13 OF 13
 NOTES LEU DATE 09-04-15 ROUTE SR 18
 H.C. HOMAN WEATHER PTLY CLOUDY COUNTY WOOD
 R.C. LEU TEMP. 85°F TOWNSHIP JACKSON
 _____ SECTION 23
 _____ T 3 N R 9 E

TYPE MONUMENT MAG/WASHER

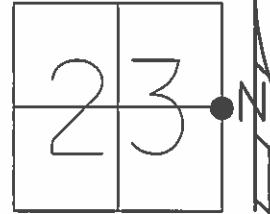
ON SURFACE - ~~BELOW~~ ON

~~LEFT~~ - ☉ PAV'T - RIGHT 1.0', 1.2' W OF ☉ SR 235

- TO - EDGE PAVEMENT

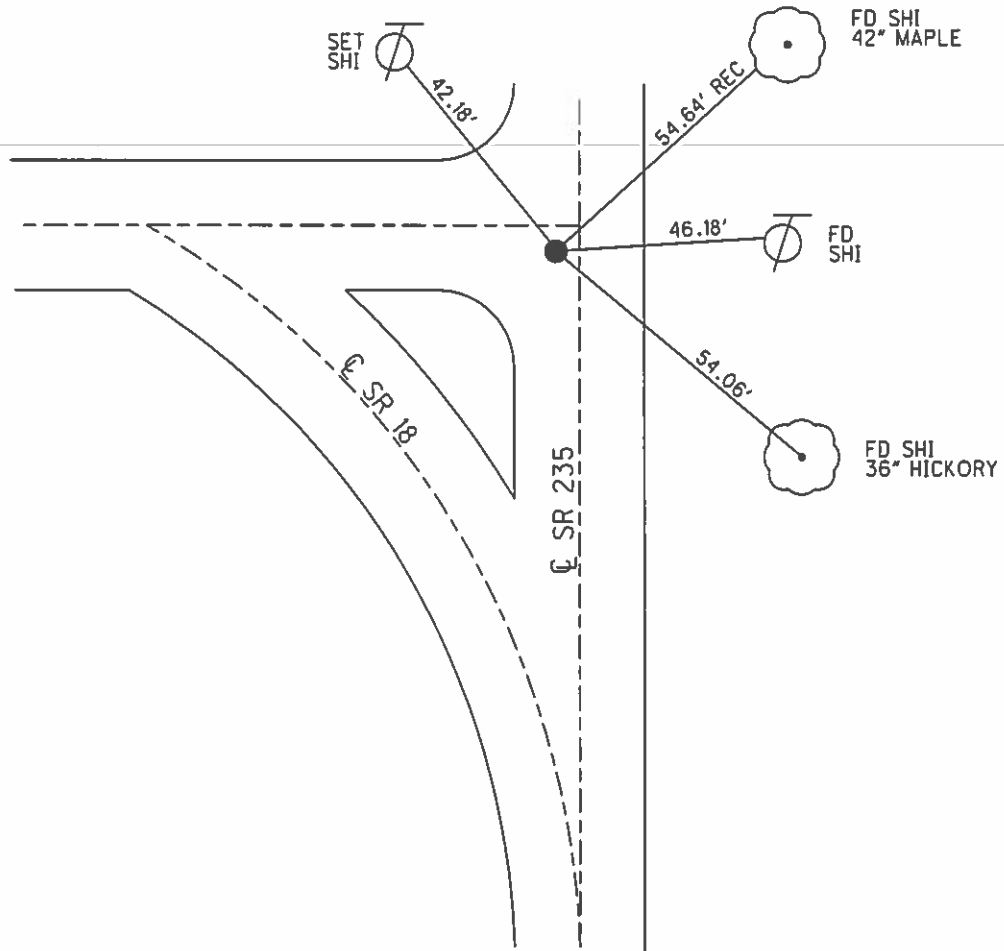
S.L.M. 267+94

GRID: NORTHING: 562849.89 EASTING: 1615087.83



RECORD:
 SET MAG/WASHER
 7-26-05, DCH

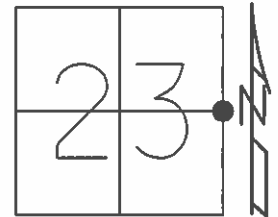
GPS, REF12
 09-04-15



O.D.O.T. DISTRICT 2 SURVEY OFFICE (USE ONLY)

PERSONNEL _____ REFERENCE NO. 6 SHEET 3 OF 26
 NOTES RHOADES DATE 8-27-15 ROUTE SR 235
 H.C. O'DONNELL WEATHER CLOUDY COUNTY WOOD
 R.C. RHOADES TEMP. 70°F TOWNSHIP JACKSON
 _____ SECTION 23
 _____ T 3 N R 9 E

TYPE MONUMENT PK/WASHER
 ON SURFACE - ~~BELOW~~ ON _____
 LEFT - ☉ PAV'T - ~~RIGHT~~ 1.4'
7.9' TO LT EDGE PAVEMENT
 S.L.M. 132+92.51



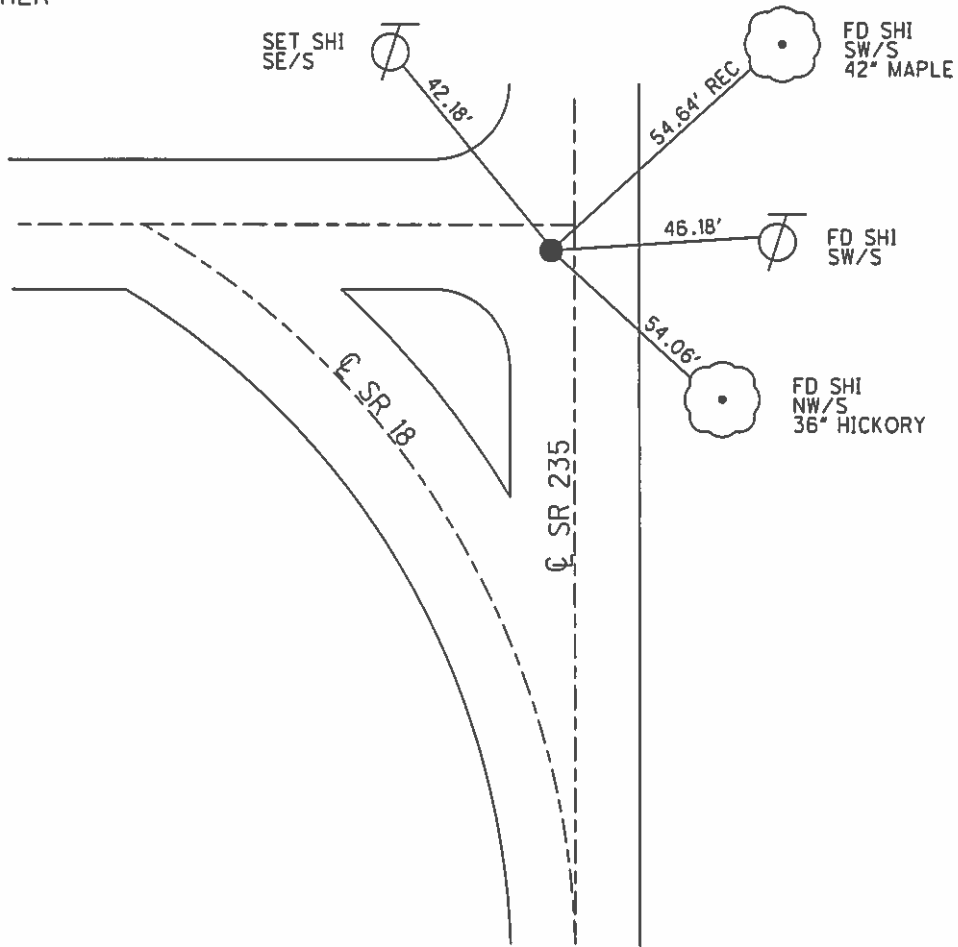
Grid: Northing: 562849.898 Easting: 1615087.839

RECORD:
 SET SM RR. SPIKE
 6-26-86, MDB

SET MAG/WASHER
 7-26-05, DCH

GPS, REF6
 8-27-15

GPS, REF12
 09-04-15



O.D.O.T. DISTRICT 2 SURVEY OFFICE

PERSONNEL

REFERENCE NO. 12

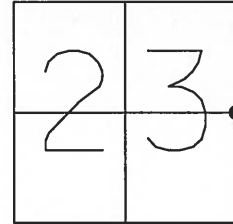
SHEET 12 OF 14

NOTES STEVE
 H.C. DUANE
 R.C. JOE

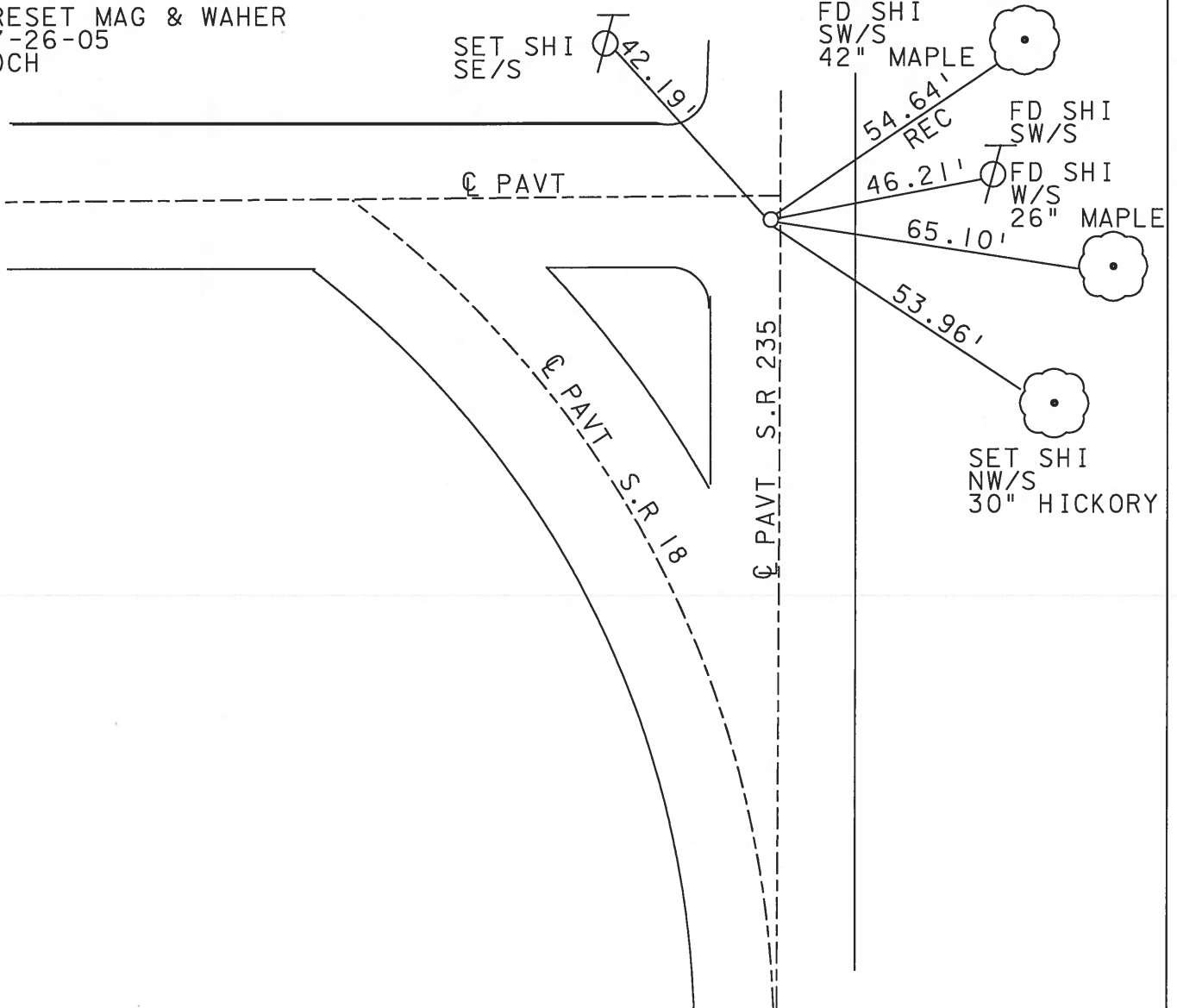
DATE 4-06-05
 WEATHER CLEAR
 TEMP. 65°

ROUTE S.R 18
 COUNTY WOOD
 TOWNSHIP JACKSON
 SECTION 23
T 3 N R 9 E

TYPE MONUMENT PK & WASHER
 ON SURFACE - ~~BELOW~~ ON
~~LEFT - C PAVT~~ - RIGHT 1.0'
TO EDGE PAVEMENT
 S.L.M. 267+94 ; 1.2' W OF C SR 235



RESET MAG & WAHER
 7-26-05
 DCH



O.D.O.T. DISTRICT 2 SURVEY OFFICE

PERSONNEL

REFERENCE NO. 12

SHEET OF

NOTES BARNHISEL

H.C. Loehcke

DATE 3-19-91

ROUTE 18

R.C. HOFFMAN

WEATHER cloudy - windy

COUNTY WOOD

TEMP. +45°

TOWNSHIP JACKSON

SECTION 23

T 3 N R 9 E

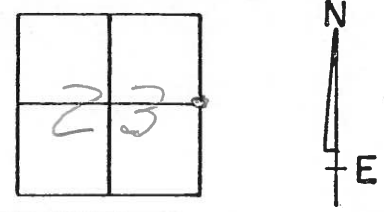
TYPE MONUMENT Sm RE Spk

ON SURFACE - BELOW yes

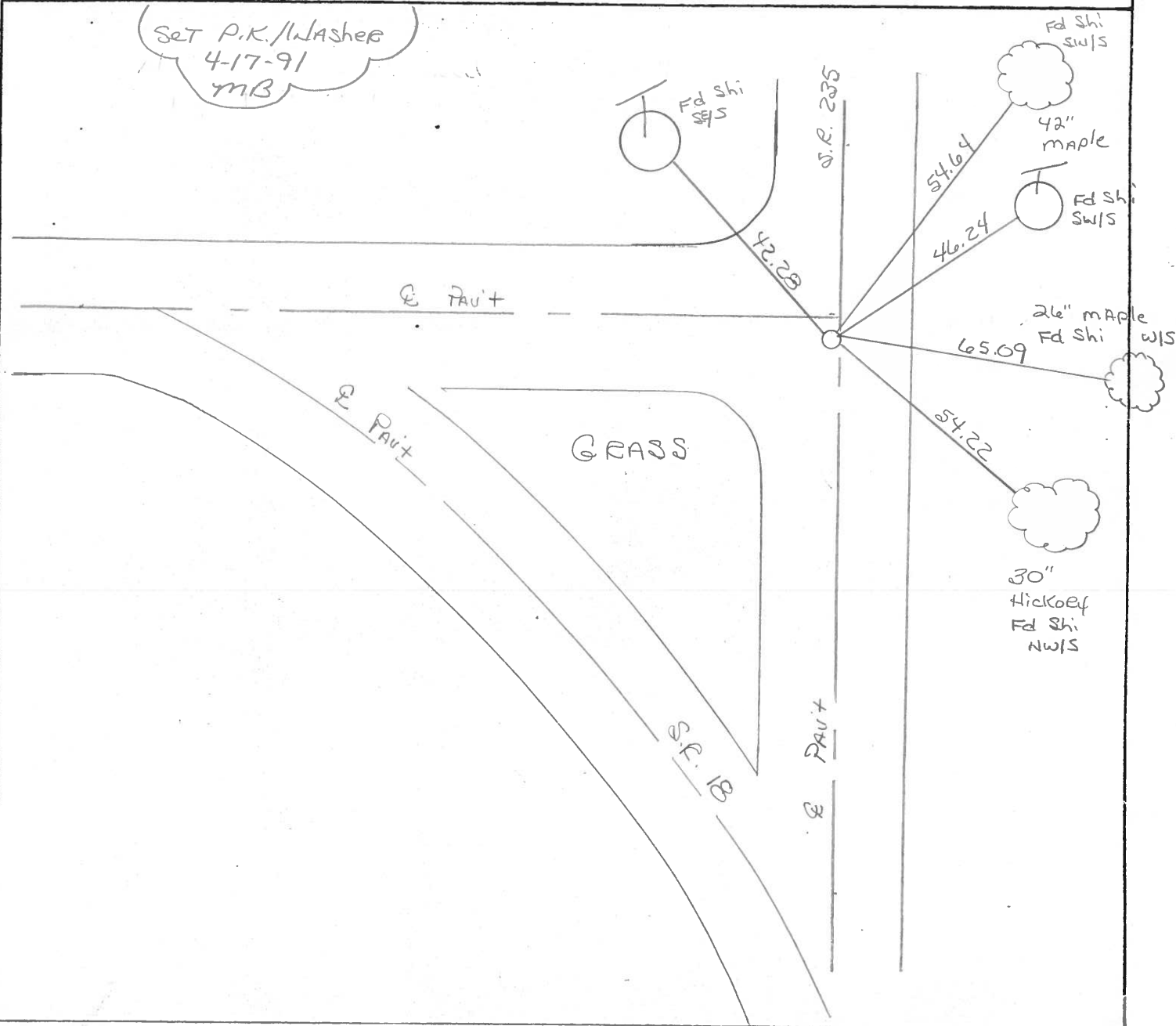
LEFT - & PAV'T. - RIGHT 0.9 & S.E. 235

10.0 TO LT EDGE PAVEMENT OF S.E. 235

S.L.M. 2.2 S. OF & West



SET P.K./Washer
 4-17-91
 MB



Q.D.O.T. DISTRICT 2 SURVEY OFFICE

SHEET 12 OF

County WOOD S.R. 18

Date 11-25-83

Township JACKSON

Weather CLEAR, WINDY

Section 23

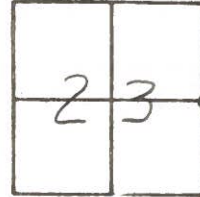
Temp. + 40°

T_N, R_E

Personnel BARNHISEL HC

HOUSEHOLDER RC

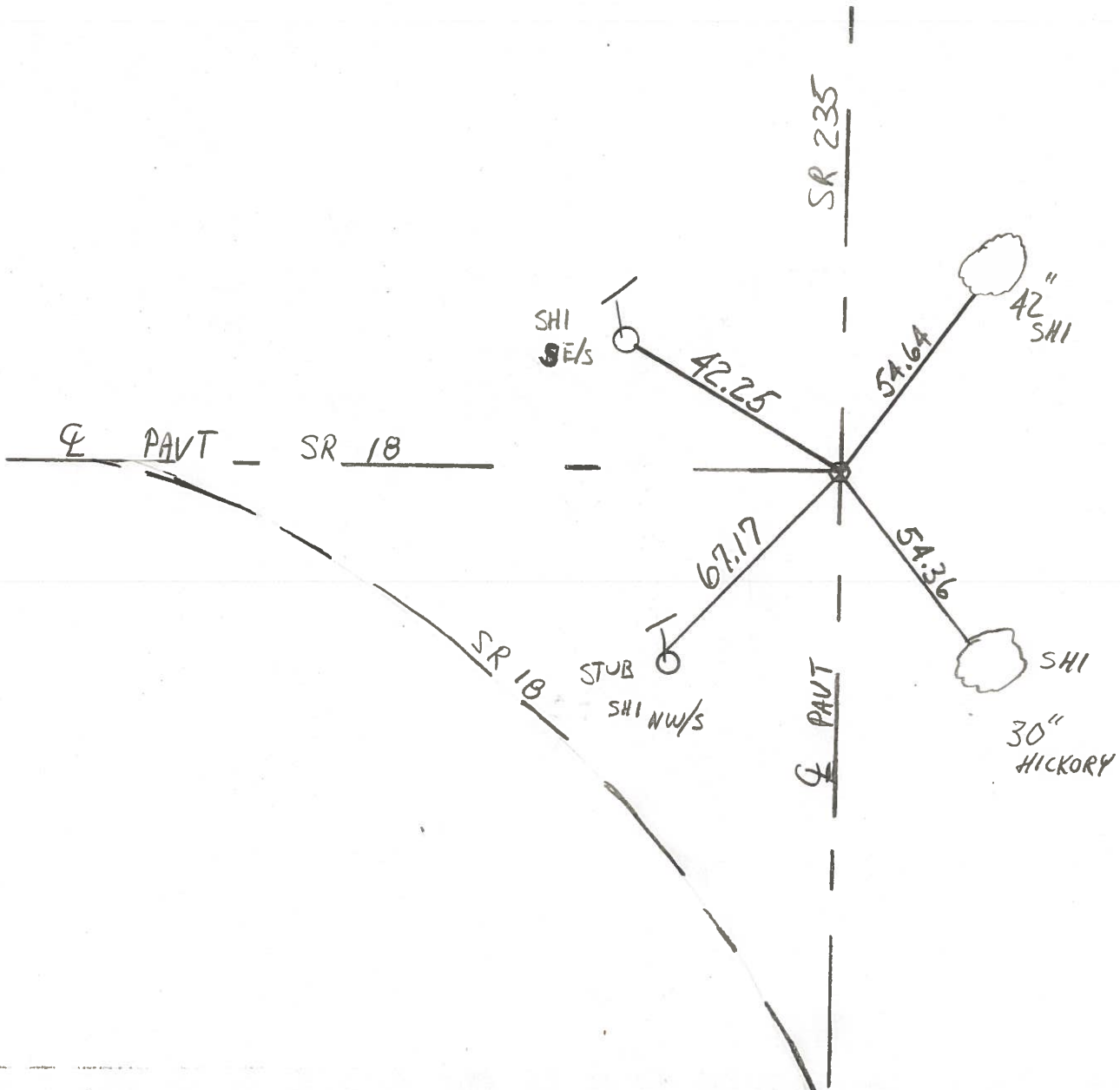
LOEHRKE



Fd RR SPIKE 1" BELOW SURFACE
 ON ♀ PAVT SR 18 TO WEST
 ON ♀ PAVT SR 235

NOT COVERED
 THIS JOB

#12



County WOOD S.R. 18

Date 5-31-74

Township JACKSON

Weather CLOUDY

Section 23

Temp. 78°

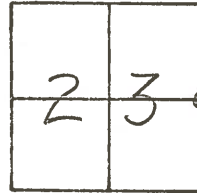
T3N, R9E

Personnel BURNSIDE

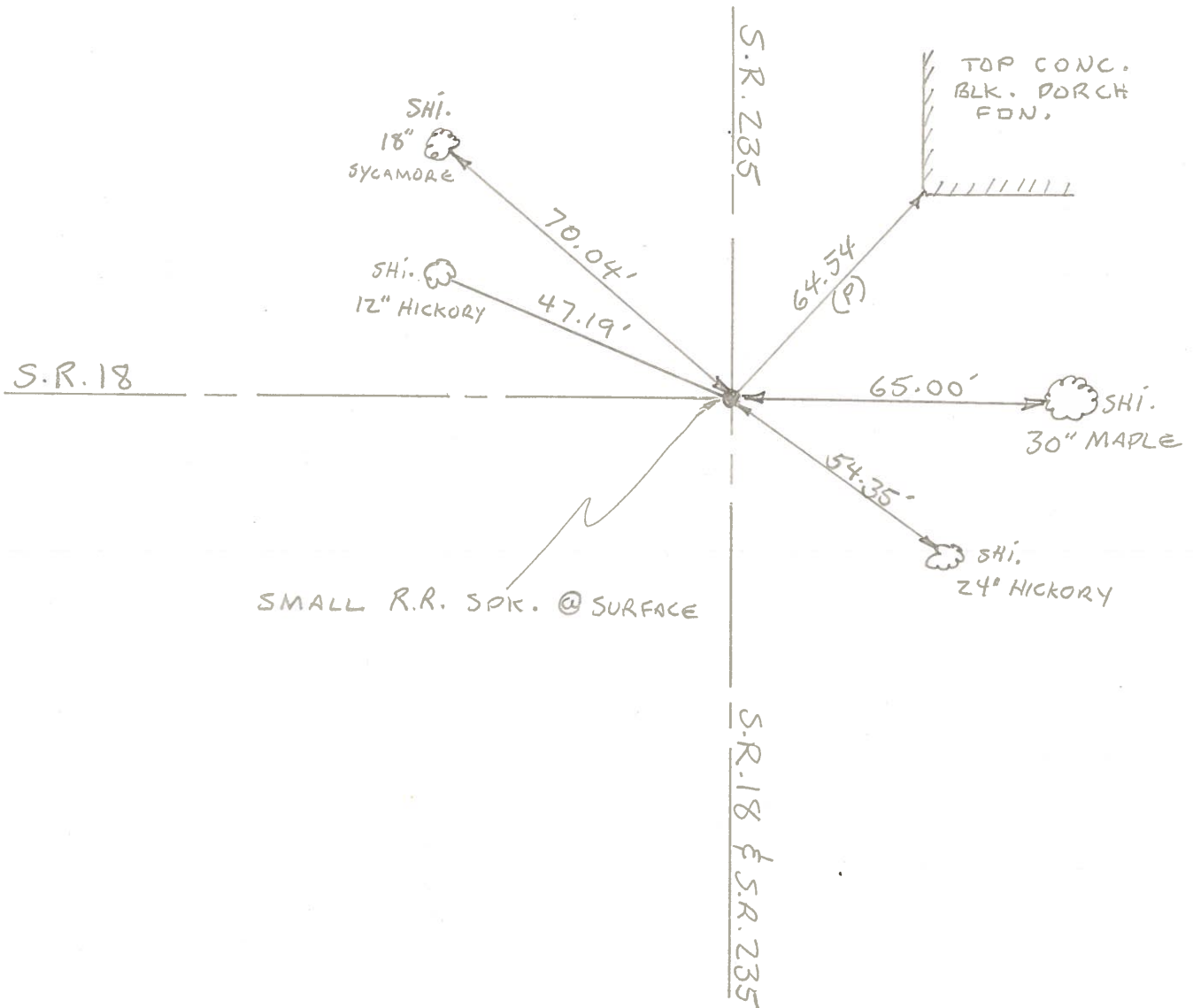
SMITH

BOWERS

MEAD



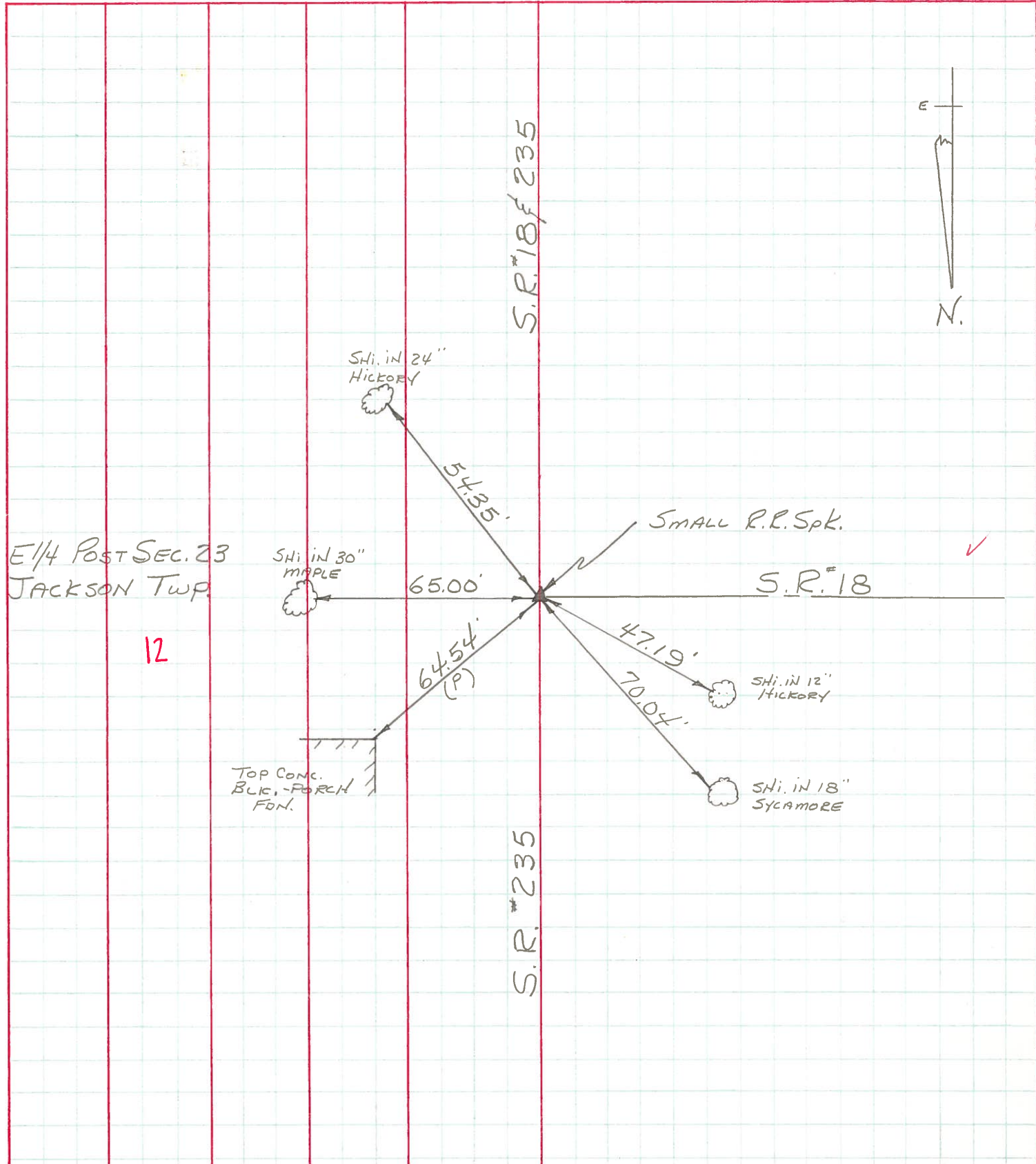
#12



PERSONNEL	TITLE	PERSONNEL	TITLE
BURNSIDE		ROCCHINI	
SMITH			
BOWERS			
HOLCOMBE			

COUNTY WOOD DATE 6-18-71
 S. R. 18E 235 WEATHER CLEAR
 SEC. _____ TEMP. +88°

DESCRIPTION _____ LEFT _____ CENTER LINE _____ RIGHT _____ JOB NO. _____



PERSONNEL	TITLE	PERSONNEL	TITLE	PERSONNEL	TITLE
				Wood	
DATE		DATE		DATE	
				#18	
WEATHER		WEATHER			
TEMP		TEMP			

DESCRIPTION	ON SOL	ON SOL	ON SOL	ON SOL	ON SOL
	LEFT	CENTER LINE	RIGHT		

(1960)

Int. 1/4 post sec. 23 Jackson Twp. Stone
 gone Conc. mon. N.E. from Stone 3
 Conc. mon N.W. from Stone 28

#112

E 1/4 post sec. 23 Jackson Twp. Stone
 OK 12-13-57 Found Bolt S.P. #18 & 69
 2nd Conc. block below E.N.E. Conc block porch 64
 Shiner in 24" Hickory S.E. 54
 Shiner in 12" Hickory N.W. 47
 Shiner in 30" maple N.E. 55
 Shiner in 20" maple E. 65

#113

S.E. Cor. sec. 23 Jackson Twp. Stone - P.R. spk. Set. Ed. Needles Ed.
 OK 12-13-57 Needles Ed.
 Conc. mon. N.W. 28
 Conc. mon. N.E. 36
 Elm mon. S.E. 38
 N.E. Cor. Hdwl. S.W. 29
 Shiner 12" Red Cedar N.E. 64
 Shiner 18" Box Elder E.N.E. 55
 Shiner P. Pole S.S.E. 93

#114

E 1/4 sec. 26 Haysville Iron pin Ties check 12-13-57
 Pump N.W. 40
 Maple S.W. 38
 Intersection of walks S.E. 41

#115

S.E. Cor. sec. 26 Jackson Twp. Stone 30' E of P.L. & 1/2 S. of 1/2 of Survey
 No. ties - 12-13-57
 N.E. Cor. E. Conc. Hdwl. S.E. 24
 N.W. Cor. W. Conc. Hdwl. S.W. 32

#116