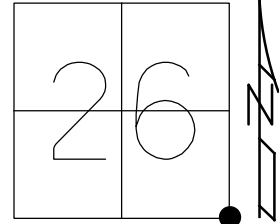


O.D.O.T. DISTRICT 2 SURVEY OFFICE (USE ONLY)

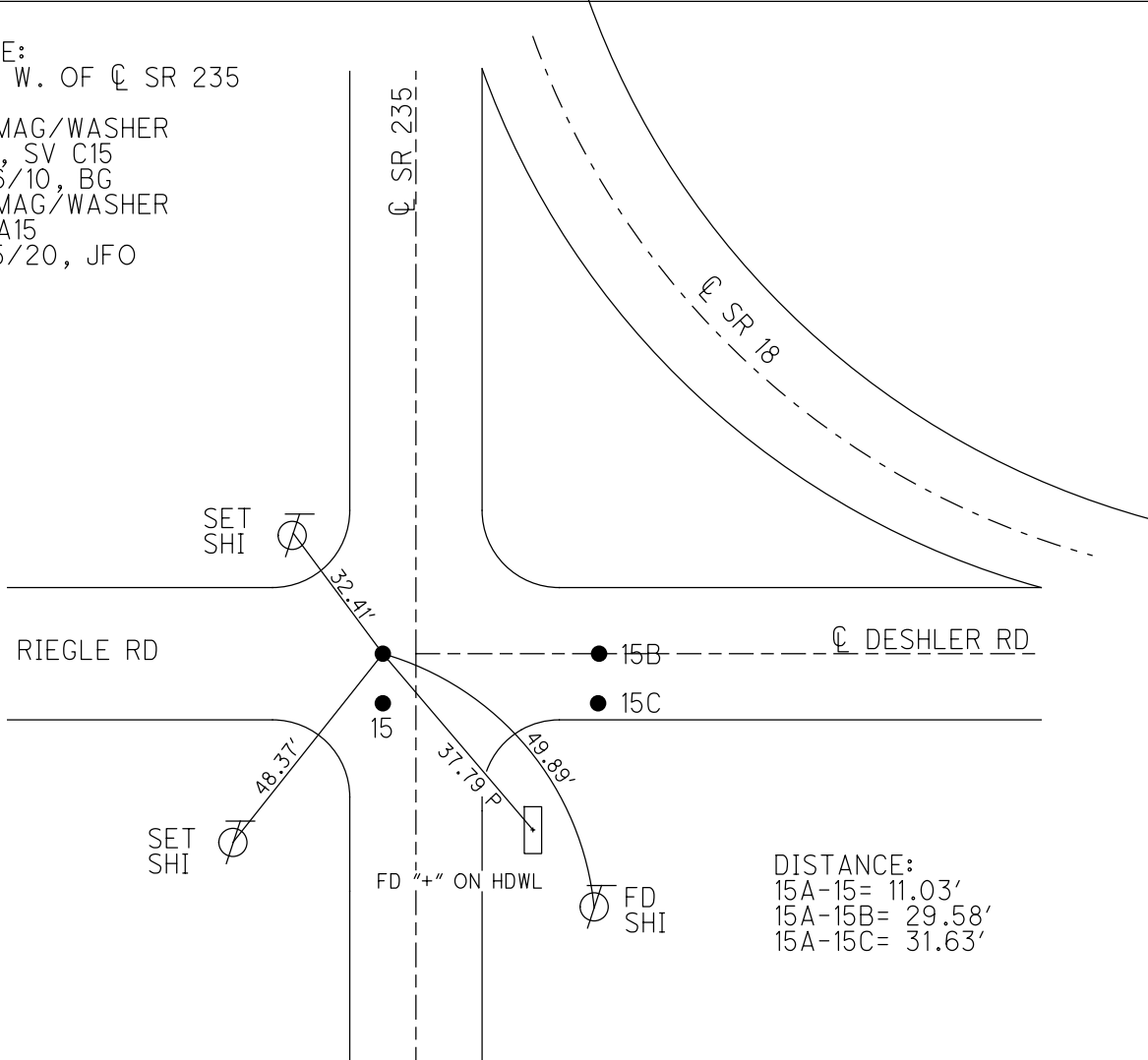
PERSONNEL \_\_\_\_\_ REFERENCE NO. 15 A SHEET 2 OF 51  
 NOTES BARNHEISEL DATE 3/19/91 ROUTE SR 18  
 H.C. LOEHRKE WEATHER CLOUDY/WINDY COUNTY WOOD  
 R.C. HOFFMAN TEMP. 45° TOWNSHIP JACKSON  
 DWG BY O'DONNELL PID PAVETRAIN SECTION 26  
 T 3 N R 9 E

TYPE MONUMENT P.K./WASHER  
 ON SURFACE - ~~BELOW~~ ON  
 LEFT - ☉ PAV'T - RIGHT ON ☉ E.  
- TO - EDGE PAVEMENT  
 STATION: 343+18



HORZ.DATUM: NAD83 (2011) GEOID: NAVD88-2012A  
 GRID: NORTHING: 554946.225 EASTING: 1614978.705

NOTE:  
 2.2' W. OF ☉ SR 235  
 FD MAG/WASHER  
 GPS, SV C15  
 6/16/10, BG  
 FD MAG/WASHER  
 REFA15  
 6/15/20, JFO



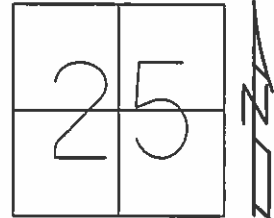
DISTANCE:  
 15A-15= 11.03'  
 15A-15B= 29.58'  
 15A-15C= 31.63'

O.D.O.T. DISTRICT 2 SURVEY OFFICE (USE ONLY)

PERSONNEL \_\_\_\_\_ REFERENCE NO. 3 A SHEET 6 OF 8

NOTES NUHFER DATE 5-06-04 ROUTE SR 235  
 H.C. CANERBURY WEATHER SUNNY COUNTY WOOD  
 R.C. ARMS TEMP. 65°F TOWNSHIP JACKSON  
 \_\_\_\_\_ SECTION 25  
 \_\_\_\_\_ T 3 N R 9 E

TYPE MONUMENT MAG/WASHER  
 ON SURFACE - ~~BELOW~~ ON  
 LEFT - ☉ PAV'T - ~~RIGHT~~ 2.2'  
 - TO - EDGE PAVEMENT  
 S.L.M. 53+87.81

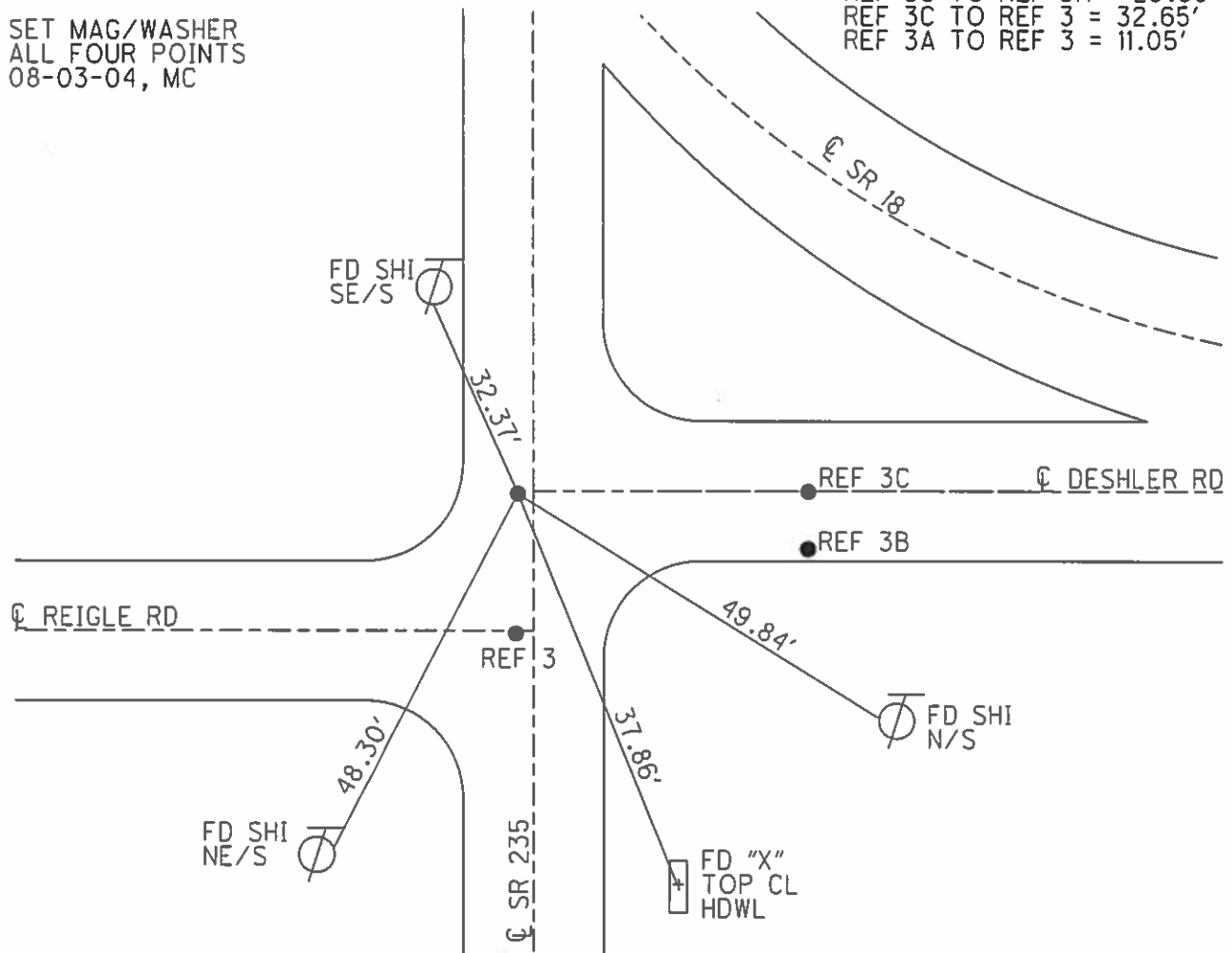


Grid: Northing: 554946.224 Easting: 1614978.645

RECORD:  
 PK WASHER@2"DOWN  
 ON ☉ OF PAVEMENT EAST  
 2.2 LT. OF ☉ S.R. 235

- REF 3B TO REF 3C = 10.99'
- REF 3B TO REF 3A = 31.68'
- REF 3B TO REF 3 = 30.84'
- REF 3C TO REF 3A = 29.60'
- REF 3C TO REF 3 = 32.65'
- REF 3A TO REF 3 = 11.05'

SET MAG/WASHER  
 ALL FOUR POINTS  
 08-03-04, MC

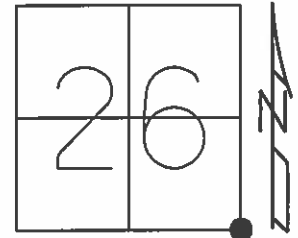


O.D.O.T. DISTRICT 2 SURVEY OFFICE (USE ONLY)

PERSONNEL \_\_\_\_\_ REFERENCE NO. 15 A SHEET 2 OF 26  
 NOTES BARNHISEL DATE 3/19/91 ROUTE SR 18  
 H.C. LOEHRKE WEATHER CLOUDY/WINDY COUNTY WOOD  
 R.C. HOFFMAN TEMP. 45° TOWNSHIP JACKSON  
 \_\_\_\_\_ SECTION 26  
 \_\_\_\_\_ T 3 N R 9 E

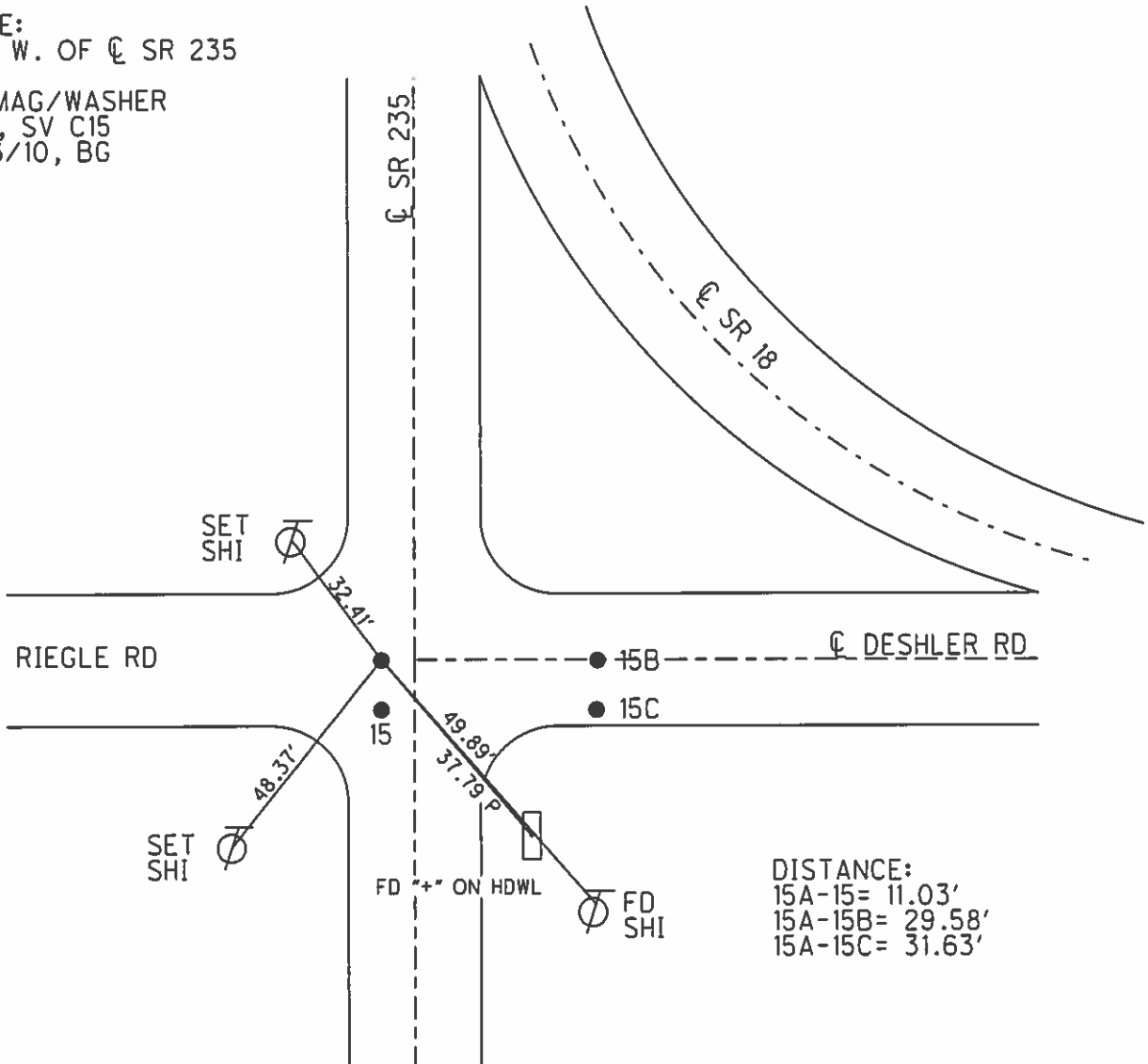
TYPE MONUMENT P.K./WASHER  
 ON SURFACE - ~~BELOW~~ ON  
 LEFT - ☉ PAV'T - RIGHT ON ☉ E.  
- TO - EDGE PAVEMENT  
 S.L.M. 343+18

Grid: Northing: 554946.224 Easting: 1614978.645



NOTE:  
 2.2' W. OF ☉ SR 235

FD MAG/WASHER  
 GPS, SV C15  
 6/16/10, BG



# O.D.O.T. DISTRICT 2 SURVEY OFFICE

PERSONNEL

REFERENCE NO. 15

SHEET      OF     

NOTES BARNHISEL

H.C. Loehake

DATE 3-19-91

ROUTE 18 & 235

R.C. HOFFMAN

WEATHER cloudy - Windy

COUNTY Wood

TEMP. +45°

TOWNSHIP JACKSON

SECTION 26

T 3 N R 9 E

TYPE MONUMENT P.K.'s & Washers

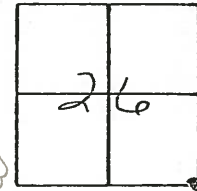
ON SURFACE - BELOW YES (ALL)

LEFT- & PAV'T. - RIGHT INFORMATION Below

- TO - EDGE PAVEMENT

S.L.M. NOT COVERED IN 1991 RESURFACING OF S.R. 18

PT. "D"  
1/2" IRON PIN  
1 1/2" DOWN



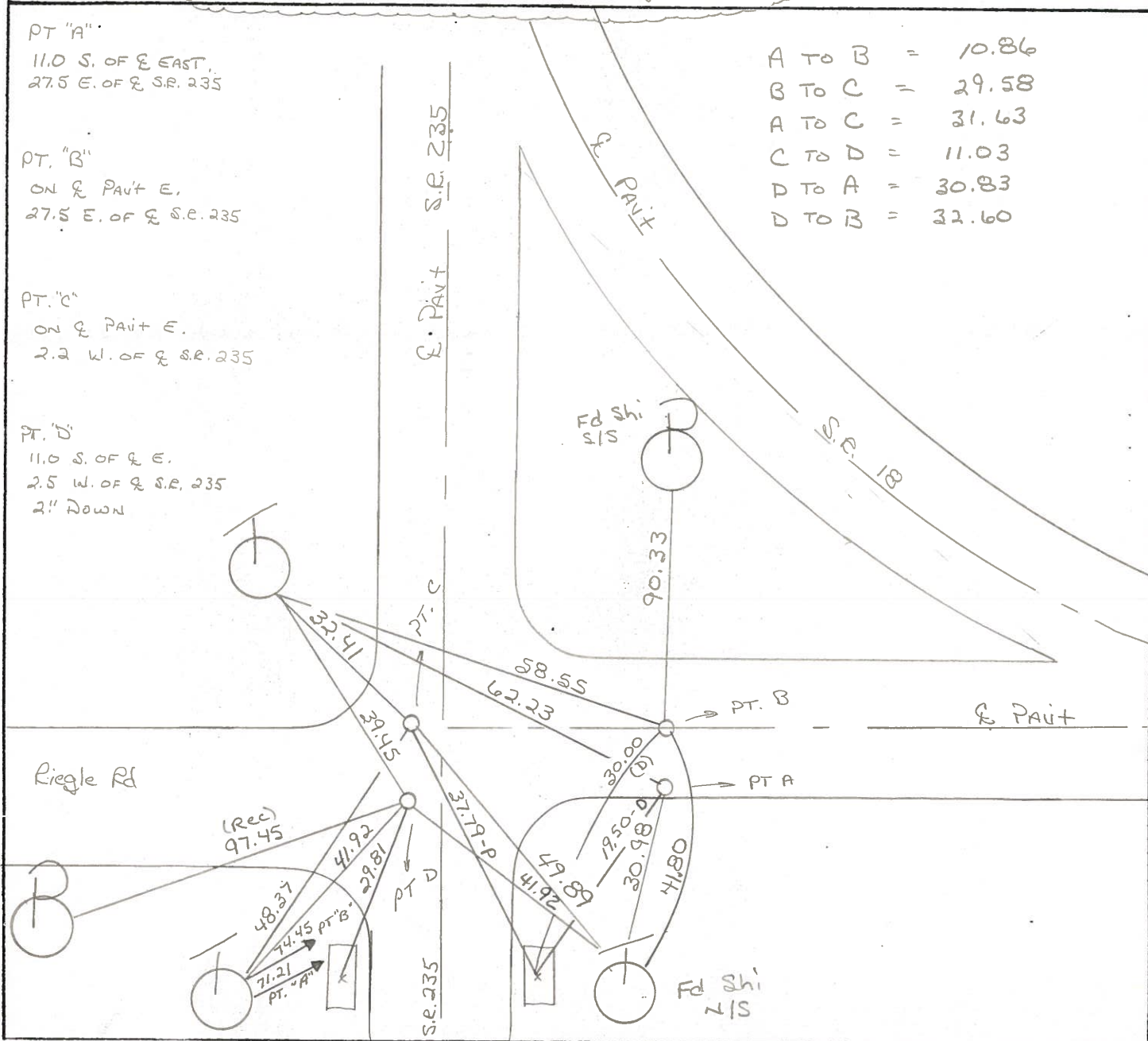
PT. "A"  
11.0 S. OF & EAST,  
27.5 E. OF & S.R. 235

PT. "B"  
ON & PAVT E.  
27.5 E. OF & S.R. 235

PT. "C"  
ON & PAVT E.  
2.2 W. OF & S.R. 235

PT. "D"  
11.0 S. OF & E.  
2.5 W. OF & S.R. 235  
2" DOWN

A TO B	=	10.86
B TO C	=	29.58
A TO C	=	31.63
C TO D	=	11.03
D TO A	=	30.83
D TO B	=	32.60



ED "X" ON BOTH HDWS

County WOOD S.R. 18

Date 11-28-83

Township JACKSON

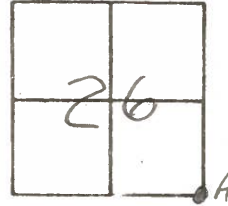
Weather RAIN, CLOUDY

Section 26

Temp. +40°

T N, R E

Personnel BARNHISEL H.C  
HOUSEHOLDER R.C  
LOEHRKE



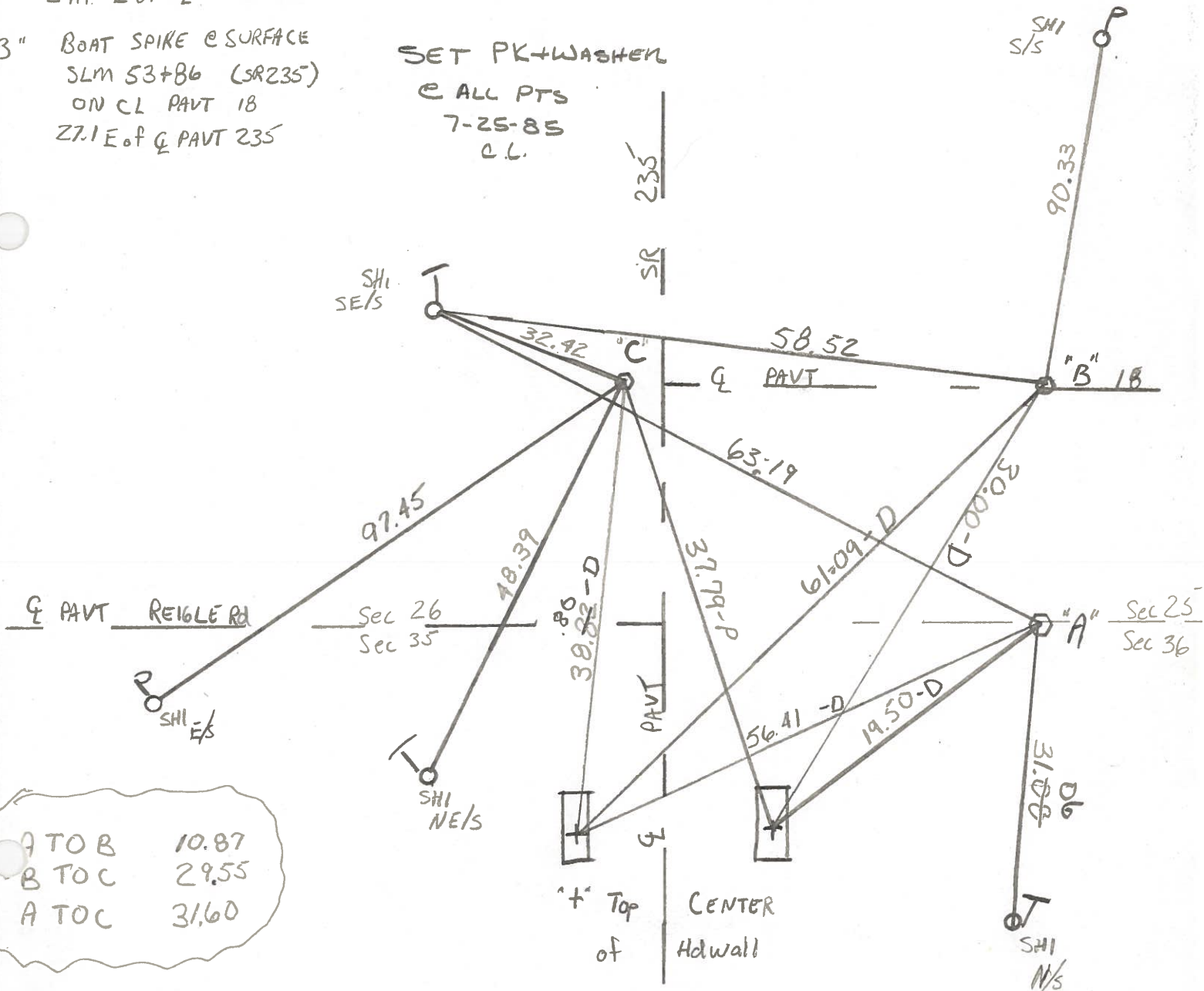
"A" RR SPIKE @ SURFACE OVER STONE  
 SLM 53+75 (SR 235)  
 10.9 S of & PAVT 18 #15  
 27.1 E of & PAVT 235

"C" RR SPIKE @ SURFACE  
 SLM 53+86 (SR 235)  
 ON & PAVT SR 18 E  
 2.5' W of & PAVT 235

#15

"B" BOAT SPIKE @ SURFACE  
 SLM 53+86 (SR 235)  
 ON CL PAVT 18  
 27.1 E of & PAVT 235

SET PK+WASHEN  
 @ ALL PTS  
 7-25-85  
 C.L.



ATO B 10.87  
 B TO C 29.55  
 A TO C 31.60

4" Top  
 of  
 Center  
 of  
 Hdwall