

O.D.O.T. DISTRICT 2 SURVEY OFFICE (USE ONLY)

PERSONNEL

REFERENCE NO. 16

SHEET 5 OF 52

NOTES AUBLE

DATE 5-23-23

ROUTE SR 18

H.C. NIESE

WEATHER CALM

COUNTY WOOD

R.C. AUBLE

TEMP. 79°

TOWNSHIP JACKSON

DWG BY NIESE

PID PAVETRAIN

SECTION 25

T 3 N R 9 E

TYPE MONUMENT P.K./NAIL IN PIPE BENT OVER STONE

~~ON SURFACE~~ - BELOW ON

OFFSET 14.2' ~~LT~~ : RT

4.9' RT TO RT EDGE PAVEMENT

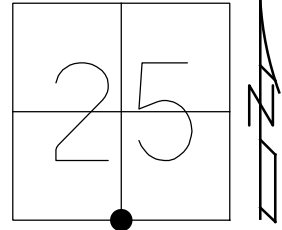
STATION: 369+80.32

HORZ.DATUM: NAD83(2011)

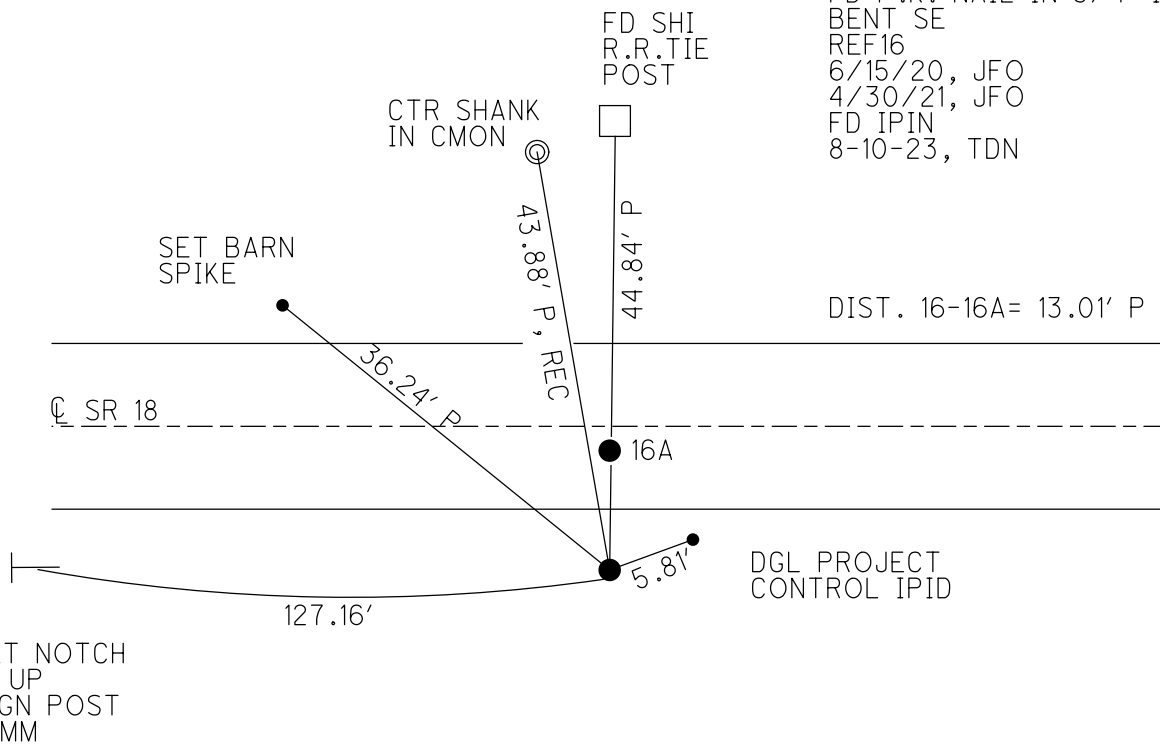
GEOID: NAVD88 2012A

GRID: NORTHING: 554927.219

EASTING: 1617640.526



RECORD:
 FD STONE
 1' DOWN
 3/4" IPIPE ATOP
 3/19/91. CL
 FD P.K. NAIL IN PIPE
 BENT OVER STONE
 1.0' DOWN
 6/3/11, SAH
 FD P.K. NAIL IN 3/4" IPIPE
 BENT SE
 REF16
 6/15/20, JFO
 4/30/21, JFO
 FD IPIN
 8-10-23, TDN



SET NOTCH
 2' UP
 SIGN POST
 7 MM

O.D.O.T. DISTRICT 2 SURVEY OFFICE (USE ONLY)

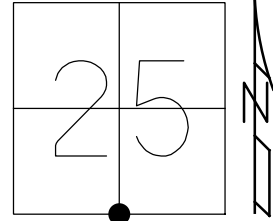
PERSONNEL _____ REFERENCE NO. 16 SHEET 5 OF 52
 NOTES RHOADES DATE 4/30/21 ROUTE SR 18
 H.C. O'DONNELL WEATHER PTLY. CLOUDY COUNTY WOOD
 R.C. RHOADES TEMP. 48° TOWNSHIP JACKSON
 DWG BY NIESE PID PAVETRAIN SECTION 25
 T 3 N R 9 E

TYPE MONUMENT P.K./NAIL IN PIPE BENT OVER STONE

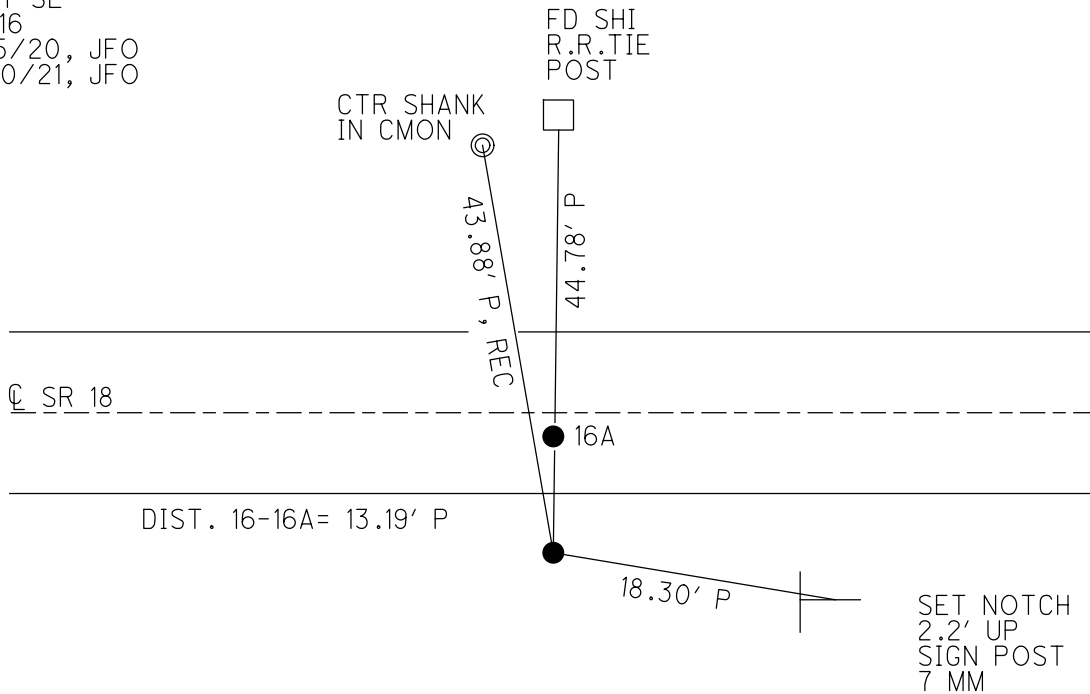
~~ON SURFACE~~ - BELOW 1.0'
 OFFSET \odot PAVEMENT 14.2' ~~RT~~ : RT
4.9' RT TO RT EDGE PAVEMENT

STATION: 369+80.32

HORZ.DATUM: NAD83(2011) GEOID: NAVD88 2012A
 GRID: NORTHING: 554927.219 EASTING: 1617640.526



RECORD:
 FD STONE
 1' DOWN
 3/4" IPIPE ATOP
 3/19/91. CL
 FD P.K. NAIL IN PIPE
 BENT OVER STONE
 1.0' DOWN
 6/3/11, SAH
 FD P.K. NAIL IN 3/4" IPIPE
 BENT SE
 REF16
 6/15/20, JFO
 4/30/21, JFO



O.D.O.T. DISTRICT 2 SURVEY OFFICE (USE ONLY)

PERSONNEL _____ REFERENCE NO. 16 SHEET 5 OF 51

NOTES CANTERBURY DATE 6/3/11 ROUTE SR 18

H.C. HUSS WEATHER PTLY.CLOUDY COUNTY WOOD

R.C. HARBAUGH TEMP. 60° TOWNSHIP JACKSON

SECTION 25

DWG BY O'DONNELL PID PAVETRAIN T 3 N R 9 E

TYPE MONUMENT P.K./NAIL IN PIPE BENT OVER STONE

~~ON SURFACE~~ - BELOW 1.0'

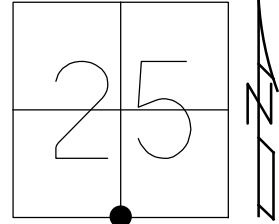
~~LEFT - C~~ PAV'T - RIGHT 14.2'

4.9' RT TO RT EDGE PAVEMENT

STATION: 369+80.32

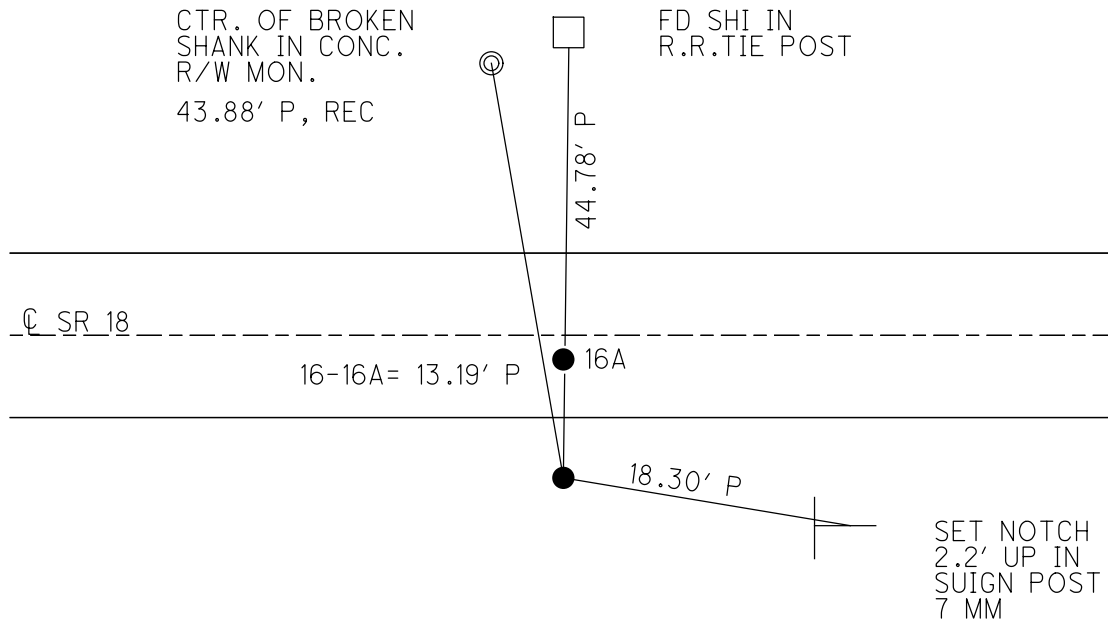
HORIZ.DATUM: NAD83 (2011) GEOID: NAVD88-2012A

GRID: NORTHING: 554927.219 EASTING: 1617640.526



RECORD: 3/19/91
 FD STONE 1' BELOW SURFACE,
 WITH 3/4" IPIPE. IPIPE BENT OVER
 TOP OF STONE. ADJUSTED IPIPE SO
 THE END OF PIPE IS OVER THE HIGH
 POINT OF STONE. CL

RECORD:
 FD PK NAIL IN
 3/4" IPIPE
 REF16
 6/15/20, JFO



O.D.O.T. DISTRICT 2 SURVEY OFFICE (USE ONLY)

PERSONNEL _____ REFERENCE NO. 16 SHEET 5 OF 26
 NOTES CANTERBURY DATE 6/3/11 ROUTE SR 18
 H.C. HUSS WEATHER PTLY.CLOUDY COUNTY WOOD
 R.C. HARBAUGH TEMP. 60° TOWNSHIP JACKSON
 _____ SECTION 25
 _____ T 3 N R 9 E

TYPE MONUMENT P.K./NAIL IN PIPE BENT OVER STONE

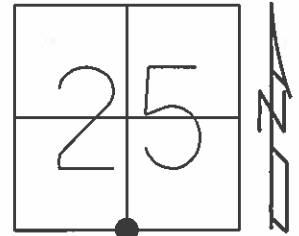
~~ON SURFACE~~ - BELOW 1.0'

~~LEFT~~ - CL PAV'T - RIGHT 14.2'

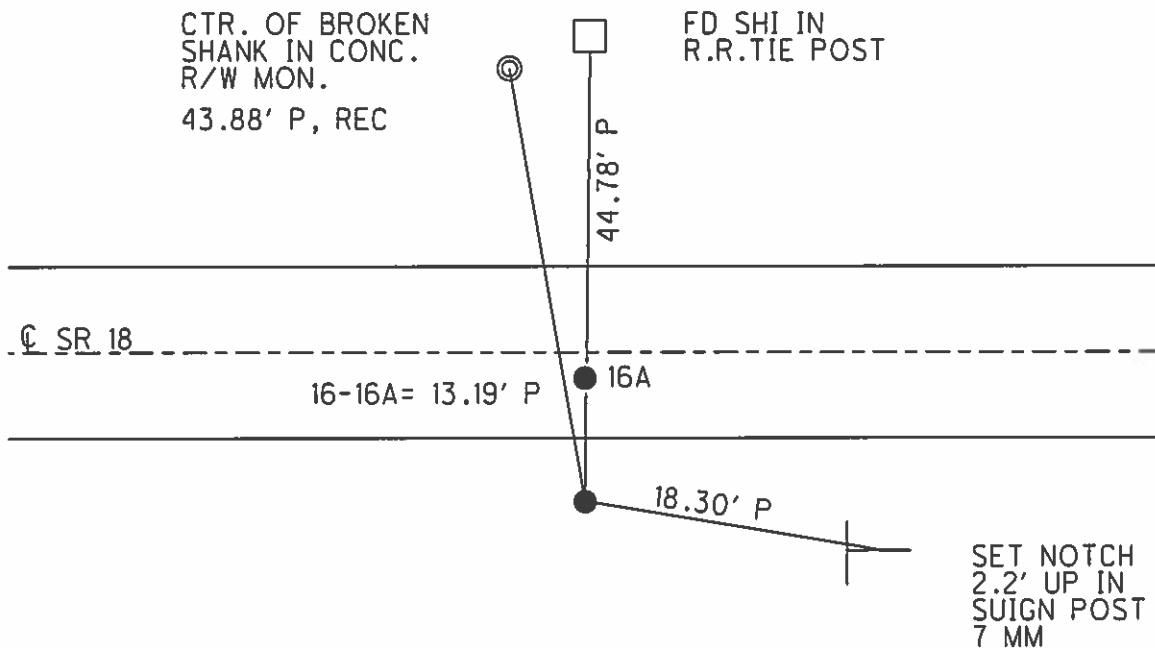
4.9' RT TO RT EDGE PAVEMENT

S.L.M. 369+80.32

Grid: Northing: - Easting: -



RECORD: 3/19/91
 FD STONE 1' BELOW SURFACE,
 WITH 3/4" IPIPE. IPIPE BENT OVER
 TOP OF STONE. ADJUSTED IPIPE SO
 THE END OF PIPE IS OVER THE HIGH
 POINT OF STONE. CL



O.D.O.T. DISTRICT 2 SURVEY OFFICE

PERSONNEL

REFERENCE NO. 16

SHEET OF

NOTES BARNHSEL

H.C. Loehake

DATE 3-19-91

ROUTE 18

R.C. HOFFMAN

WEATHER cloudy, Windy

COUNTY WOOD

TEMP. +45°

TOWNSHIP JACKSON

SECTION 25

T 3 N R 9 E

TYPE MONUMENT 3/4" Iron Pin PT "B"

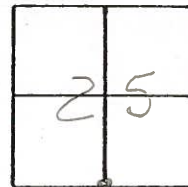
PT "A" = 16

ON SURFACE - BELOW 1'

PT "B" = 16A

LEFT - ℄ PAV'T. - RIGHT 14.2

5.5 RT OF ℄ RT EDGE PAVT



S.L.M. 370+94

P.K. & Washers

370+94

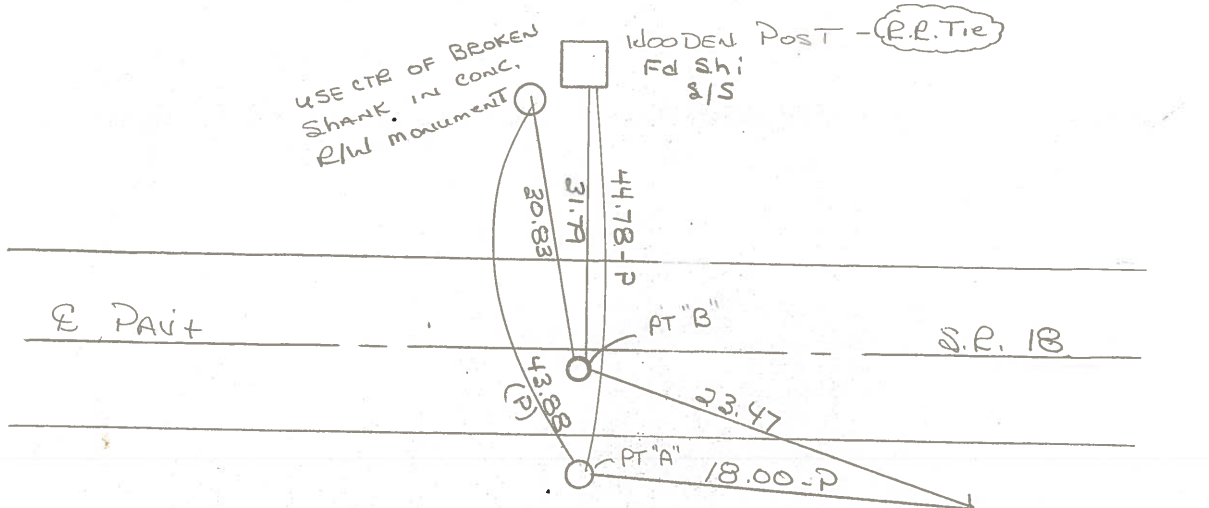
1.4 RT OF ℄

8.1 TO RT Edge PAVT

Set P.K./Washer

4-17-91

PT "B" mB
ON old survey line
OF 1927



Record = Found STONE 1' Below Surface, with 3/4" IRON Pipe.
IRON Pipe Bent OVER TOP OF STONE, Adjusted Pipe SO THE END OF THE PIPE IS OVER THE HIGH POINT OF STONE

Record = PT "B" Fd SMALL CONC. NAIL 1.2 RT OF ℄ PAVT / SET 11-21-83 by
HOFFMAN & CREW ON RECONSTRUCTED SURVEY LINE OF 1927

O.D.O.T. DISTRICT 2 SURVEY OFFICE

PERSONNEL

REFERENCE NO. #16

SHEET 1 OF

NOTES HOFFMAN

H.C. LOEHRKE

DATE 6-16-87

ROUTE SR 18

R.C. BARHISEL

WEATHER Clear

COUNTY Wood

Sackman

TEMP. 85°

TOWNSHIP Jackson

SECTION 25

T3 N R 9 E

TYPE MONUMENT I. PIPE OVER STONE

ON SURFACE - BELOW 1'

LEFT - & PAV'T. - RIGHT 14.2'

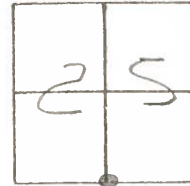
5.5 TO RT EDGE PAVEMENT

S.L.M. 370+74

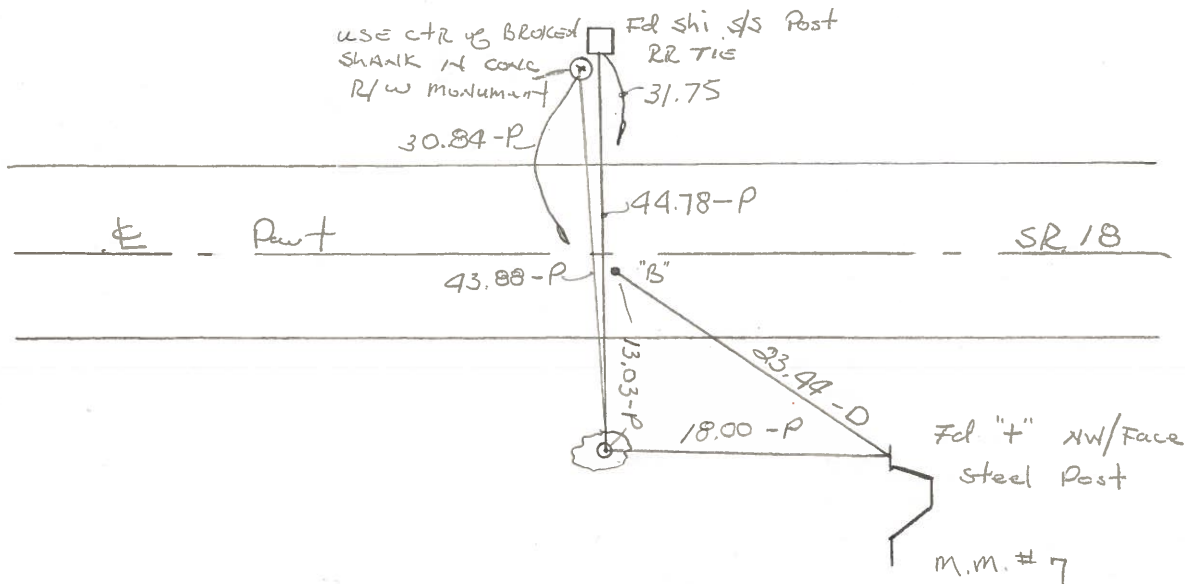
Set P.K./WASHER
Point "B"
7-27-87
Sack

PT "A" = 16

PT "B" = 16A



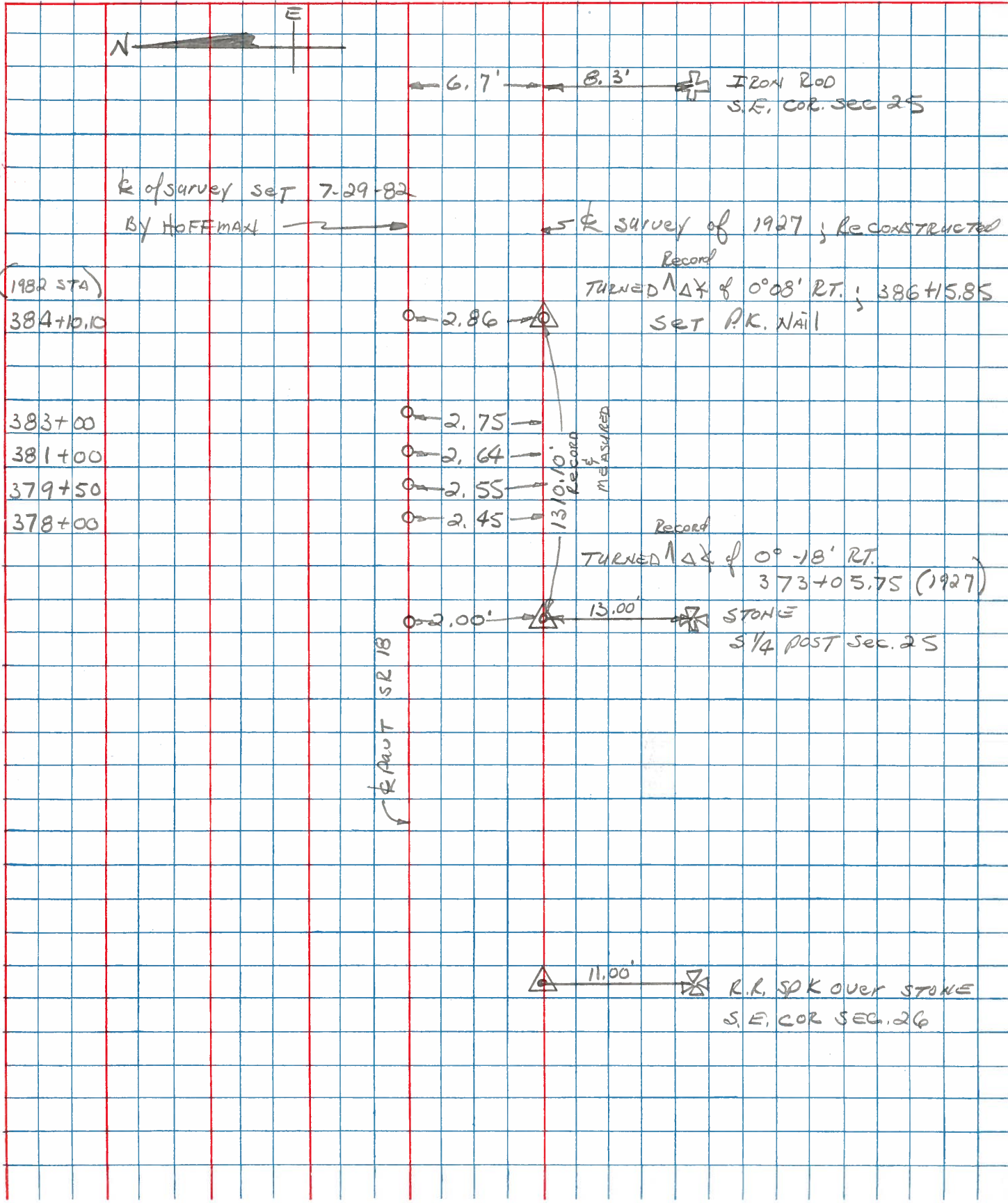
Found stone 1' below surface, with 3/4" I.D. I. PIPE bent over top of stone. ADJUSTED PIPE so the ends of the pipe is over the high point of stone. Put field tile pieces over stone.



"B" Fol SMALL CONC Nail 1.2' RT of & Pavt set 11-21-83 by HOFFMAN ON Re constructed survey line of 1927

| | | | | | | | |
|-------------|-------|-----------|-------|--------|---------------------|---------|---------------|
| PERSONNEL | TITLE | PERSONNEL | TITLE | COUNTY | Woon | DATE | Nov 21, 83 |
| HOFFMAN | | | | S. R. | 18 | WEATHER | Clear - windy |
| LOHRKE | T | | | SEC. | 07.19 / RADER Creek | TEMP. | +40° |
| HOUSEHOLDER | | | | | | | |
| BARHNISEL | | | | | | | |

DESCRIPTION RELATIONSHIP BTW SURVEY LINES of 1982 & 1927 JOB NO. _____



County Wood S.R. 18

Date 7-13-82

Township Jackson

Weather clear

Section 25

Temp. +75°

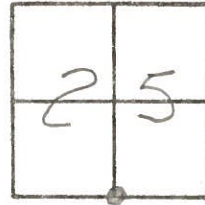
T3N, R9E

Personnel Hoffman

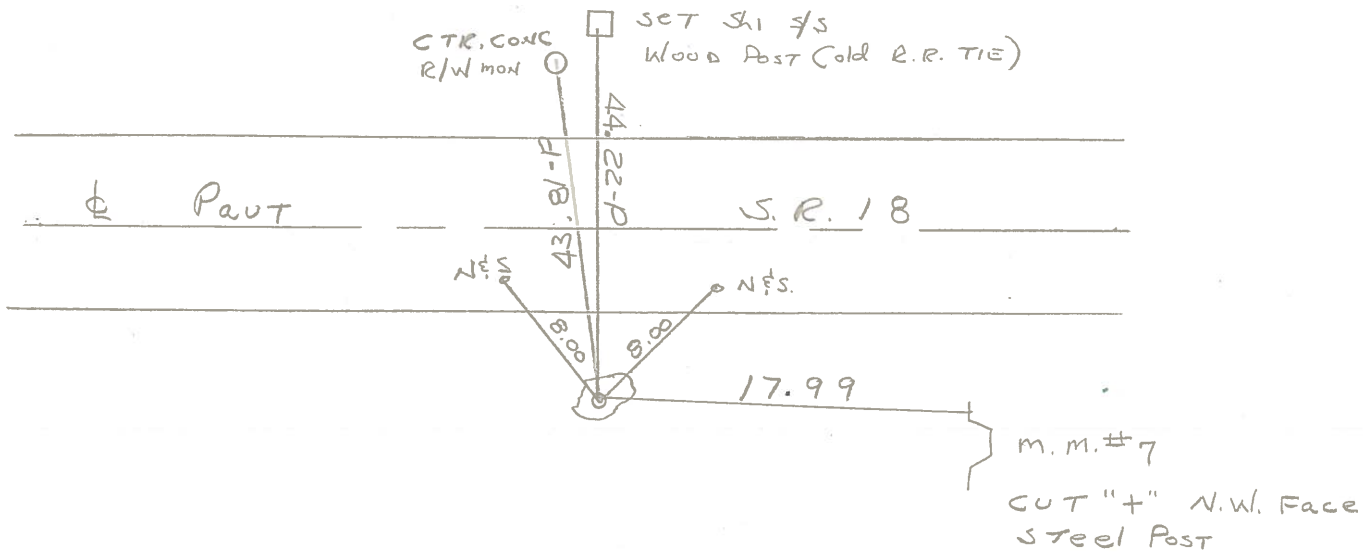
Householder

Loehrke

#16



Fd. stone; 1' below surface; with 3/4" I.D. IRON PIPE BENT OVER TOP OF STONE. ADJUSTED PIPE SO THE END OF THE PIPE IS OVER THE HIGH POINT OF STONE. PUT FIELD TILE PIECES OVER STONE, 5.5' TO S. EP. 14.2' S. of & PAUT S.R. 18



County WOOD S.R. 18

Date 6-18-71

Township JACKSON

Weather CLEAR

Section 25

Temp. 88°

T3N, R9E

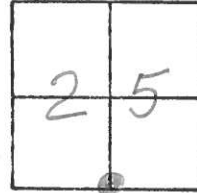
Personnel BURNSIDE

SMITH

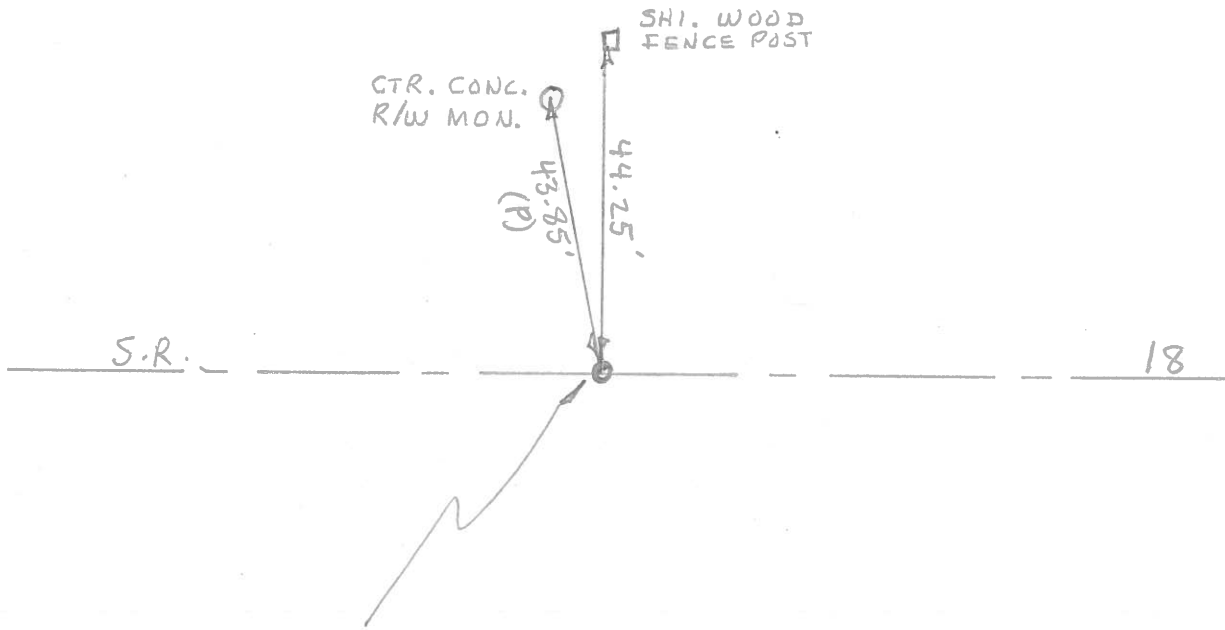
BOWERS

HOLCOMBE

ROGGINI



#16



FD. STONE WITH 1/2"
 IRON ROD LEANING
 OVER SAME. PLACED
 FIELD TILE AROUND STONE