

O.D.O.T. DISTRICT 2 SURVEY OFFICE (USE ONLY)

PERSONNEL

REFERENCE NO. 16 A

SHEET 6 OF 52

NOTES AUBLE

DATE 5-23-23

ROUTE SR 18

H.C. NIESE

WEATHER CALM

COUNTY WOOD

R.C. AUBLE

TEMP. 79°

TOWNSHIP JACKSON

DWG BY NIESE

PID PAVETRAIN

SECTION 25

T 3 N R 9 E

TYPE MONUMENT MAG/WASHER

ON SURFACE - ~~BELOW~~ ON

OFFSET CL PAVEMENT 1.2' ~~LT~~ : RT

8.2' TO RT EDGE PAVEMENT

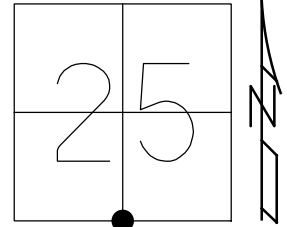
STATION: 369+80.32

HORZ. DATUM: NAD83(2011)

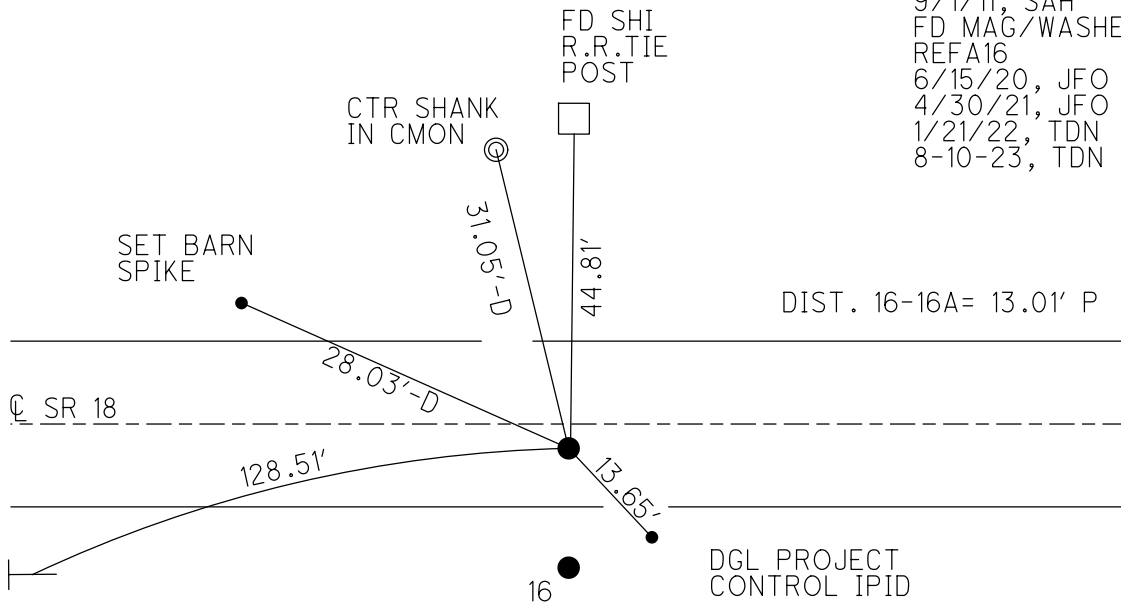
GEOID: NAVD88 2012A

GRID: NORTHING: 554940.188

EASTING: 1617641.073



RECORD:  
 SET SM.CONC.NAIL  
 11/21/83, HOFFMAN  
 FD SM.CONC.NAIL  
 3/19/91  
 SET P.K./WASHER  
 4/17/91, MB  
 FD P.K./WASHER  
 6/3/11, SAH  
 SET MAG/WASHER  
 9/1/11, SAH  
 FD MAG/WASHER  
 REFA16  
 6/15/20, JFO  
 4/30/21, JFO  
 1/21/22, TDN  
 8-10-23, TDN

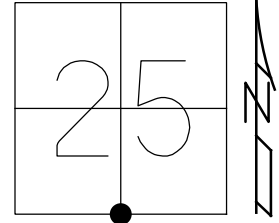


SET NOTCH  
 2' UP  
 SIGN POST  
 7 MM

O.D.O.T. DISTRICT 2 SURVEY OFFICE (USE ONLY)

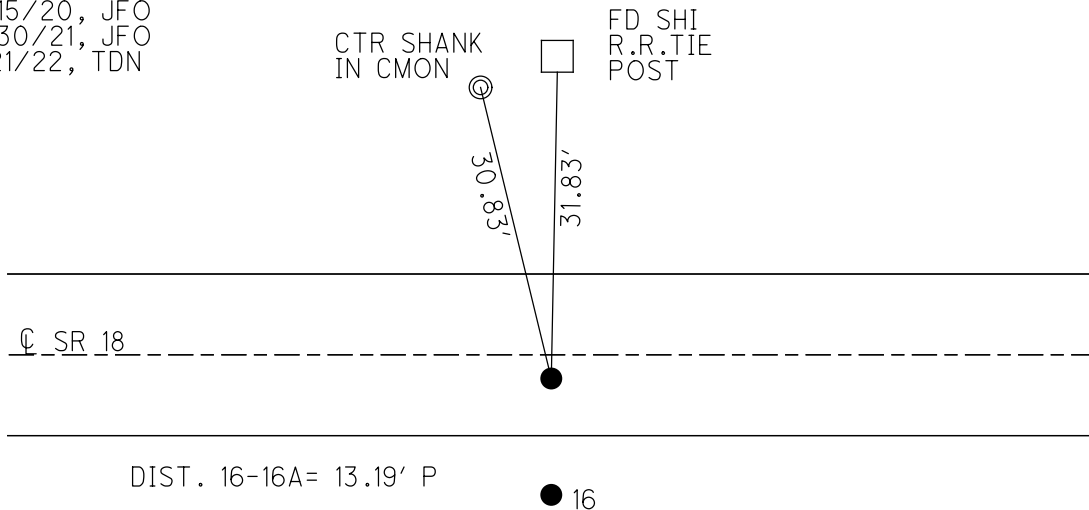
PERSONNEL \_\_\_\_\_ REFERENCE NO. 16 A SHEET 6 OF 52  
 NOTES RHOADES DATE 4/30/21 ROUTE SR 18  
 H.C. O'DONNELL WEATHER PTLY. CLOUDY COUNTY WOOD  
 R.C. RHOADES TEMP. 48° TOWNSHIP JACKSON  
 DWG BY NIESE PID PAVETRAIN SECTION 25  
 T 3 N R 9 E

TYPE MONUMENT MAG/WASHER  
 ON SURFACE - ~~BELOW~~ ON  
 OFFSET  $\odot$  PAVEMENT 1.2' ~~LT~~ : RT  
8.2' TO RT EDGE PAVEMENT  
 STATION: 369+80.32



HORIZ. DATUM: NAD83(2011) GEOID: NAVD88 2012A  
 GRID: NORTHING: 554940.188 EASTING: 1617641.073

RECORD:  
 SET SM.CONC.NAIL  
 11/21/83, HOFFMAN  
 FD SM.CONC.NAIL  
 3/19/91  
 SET P.K./WASHER  
 4/17/91, MB  
 FD P.K./WASHER  
 6/3/11, SAH  
 SET MAG/WASHER  
 9/1/11, SAH  
 FD MAG/WASHER  
 REFA16  
 6/15/20, JFO  
 4/30/21, JFO  
 1/21/22, TDN



O.D.O.T. DISTRICT 2 SURVEY OFFICE (USE ONLY)

PERSONNEL \_\_\_\_\_ REFERENCE NO. 16 A SHEET 6 OF 51

NOTES CANTERBURY DATE 6/3/11 ROUTE SR 18

H.C. HUSS WEATHER PTLY.CLOUDY COUNTY WOOD

R.C. HARBAUGH TEMP. 60° TOWNSHIP JACKSON

SECTION 25

DWG BY O'DONNELL PID PAVETRAIN T 3 N R 9 E

TYPE MONUMENT P.K./WASHER

ON SURFACE - ~~BELOW~~ ON

~~LEFT~~ - ☉ PAV'T - RIGHT 1.2'

8.2' TO RT EDGE PAVEMENT

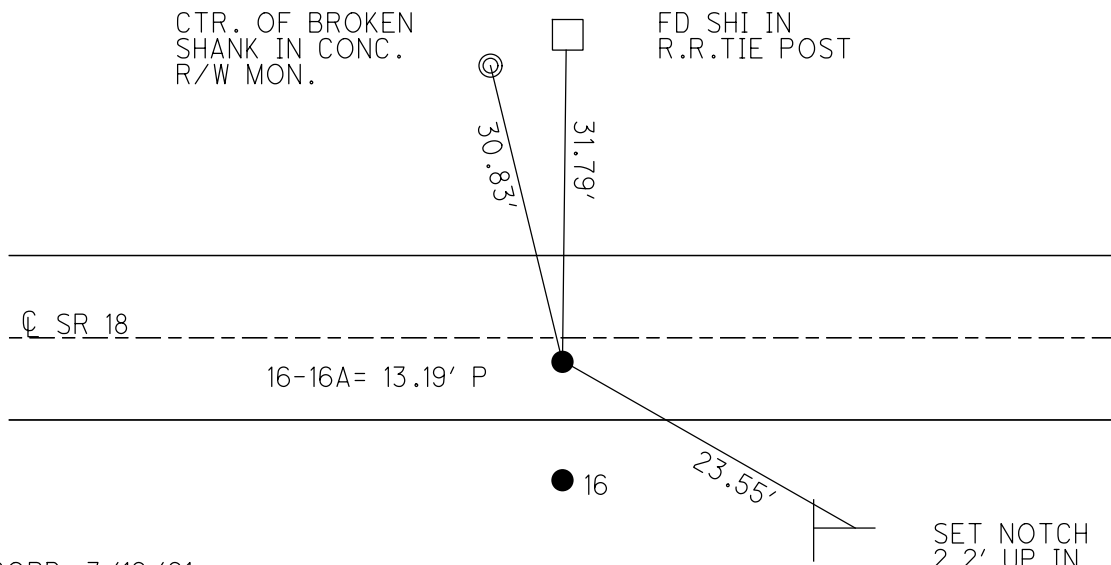
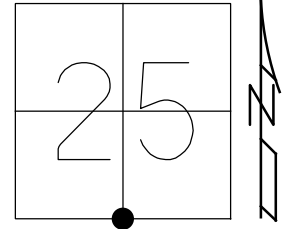
STATION: 369+80.32

HORZ.DATUM: NAD83 (2011)

GEOID: NAVD88-2012A

GRID: NORTHING: 554940.188

EASTING: 1617641.073



RECORD: 3/19/91  
 FD SMALL CONC. NAIL 1.2' RT OF ☉  
 PAV'T. SET 11/21/83 BY HOFFMAN  
 AND CREW ON RECONSTRUCTED SURVEY  
 LINE OF 1927.

SET P.K./WASHER  
 ON OLD SURVEY LINE, 1927.  
 4/17/91, MB

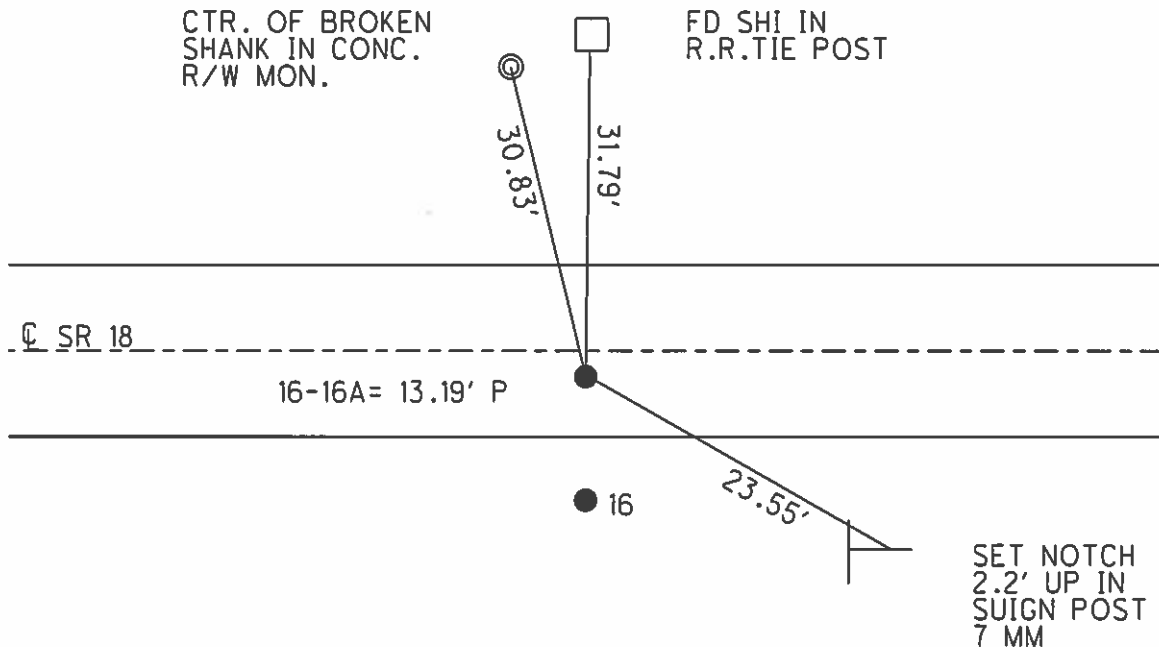
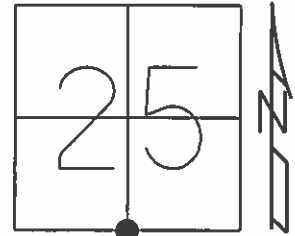
FD P.K./WASHER  
 GPS, REFB16  
 SET MAG/WASHER  
 9/1/11, SAH  
 FD MAG/WASHER  
 REFA16  
 6/15/20, JFO

O.D.O.T. DISTRICT 2 SURVEY OFFICE (USE ONLY)

PERSONNEL \_\_\_\_\_ REFERENCE NO. 16 A SHEET 6 OF 26  
 NOTES CANTERBURY DATE 6/3/11 ROUTE SR 18  
 H.C. HUSS WEATHER PTLY.CLOUDY COUNTY WOOD  
 R.C. HARBAUGH TEMP. 60° TOWNSHIP JACKSON  
 \_\_\_\_\_ SECTION 25  
 \_\_\_\_\_ T 3 N R 9 E

TYPE MONUMENT P.K./WASHER  
 ON SURFACE - ~~BELOW~~ ON  
~~LEFT~~ - Q PAV'T - RIGHT 1.2'  
8.2' TO RT EDGE PAVEMENT  
 S.L.M. 369+80.32

Grid: Northing: 554940.273 Easting: 1617640.961



RECORD: 3/19/91  
 FD SMALL CONC. NAIL 1.2' RT OF Q  
 PAV'T. SET 11/21/83 BY HOFFMAN  
 AND CREW ON RECONSTRUCTED SURVEY  
 LNE OF 1927.

SET P.K./WASHER  
 ON OLD SURVEY LINE, 1927.  
 4/17/91, MB

FD P.K./WASHER  
 GPS, REFB16  
 SET MAG/WASHER  
 9/1/11, SAH

# O.D.O.T. DISTRICT 2 SURVEY OFFICE

PERSONNEL

REFERENCE NO. 16

SHEET      OF     

NOTES BAENHISEL

H.C. LOCHAKE

R.G. HOFFMAN

DATE 3-19-91

WEATHER cloudy, WINDY

TEMP. +45°

ROUTE 18

COUNTY WOOD

TOWNSHIP JACKSON

SECTION 25

T 3 N R 9 E

TYPE MONUMENT 3/4" IRON PIN PT "B"

PT "A" = 16

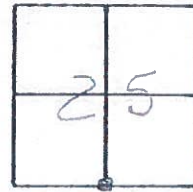
PT "B" = 16A

ON SURFACE - BELOW 1"

LEFT - CL PAV'T. - RIGHT 14.2

5.5 <sup>RT OF</sup> TO RT EDGE PAVEMENT

S.L.M. 370+94



P.K. & Washer

370+94

1.4 RT OF CL

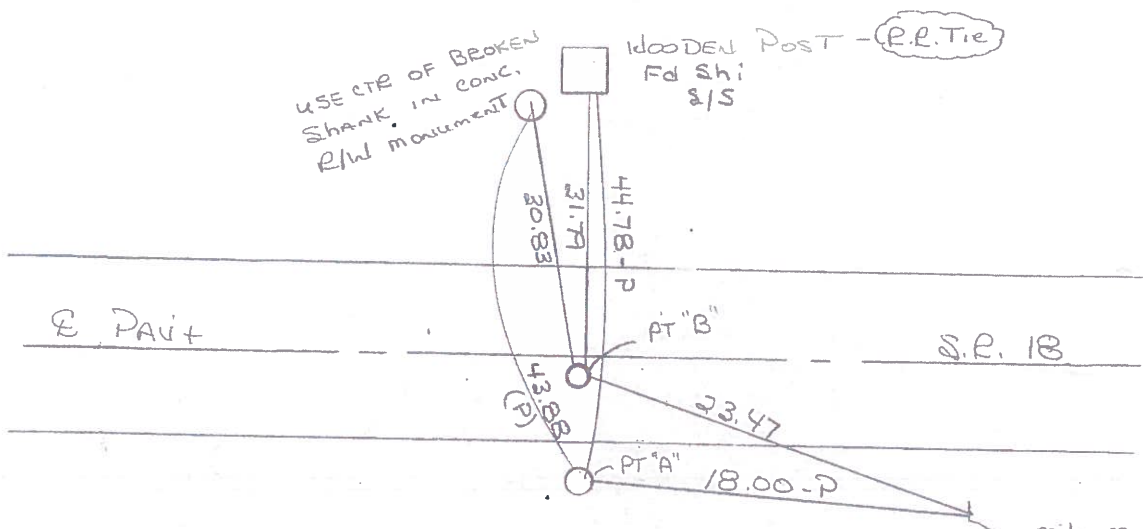
8.1 TO RT edge PAVT

Set P.K./Washer

4-17-91

PT "B" mB

ON old survey LINE OF 1927



**RECORD:** FOUND STONE 1' Below Surface, with 3/4" IRON Pipe. IRON Pipe Bent OVER TOP OF STONE, ADJUSTED PIPE SO THE END OF THE PIPE IS OVER THE HIGH POINT OF STONE

**RECORD:** PT "B" Fd SMALL CONC. NAIL 1.2 RT OF CL PAVT / SET 11-21-83 by HOFFMAN & CREW ON RECONSTRUCTED SURVEY LINE OF 1927

# O.D.O.T. DISTRICT 2 SURVEY OFFICE

PERSONNEL

REFERENCE NO. #16

SHEET 1 OF

NOTES HOFFMAN

H.C. LOEHRKE

R.C. BARNHISEL

Sorkmad

DATE 6-16-87

WEATHER Clear

TEMP. 85°

ROUTE SR 18

COUNTY Wood

TOWNSHIP Jackson

SECTION 25

T3 N R 9 E

TYPE MONUMENT I. PIPE OVER STONE

ON SURFACE - BELOW 1'

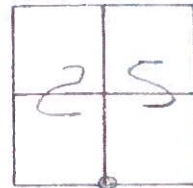
LEFT- & PAV'T. - RIGHT 14.2'

5.5 TO RT EDGE PAVEMENT

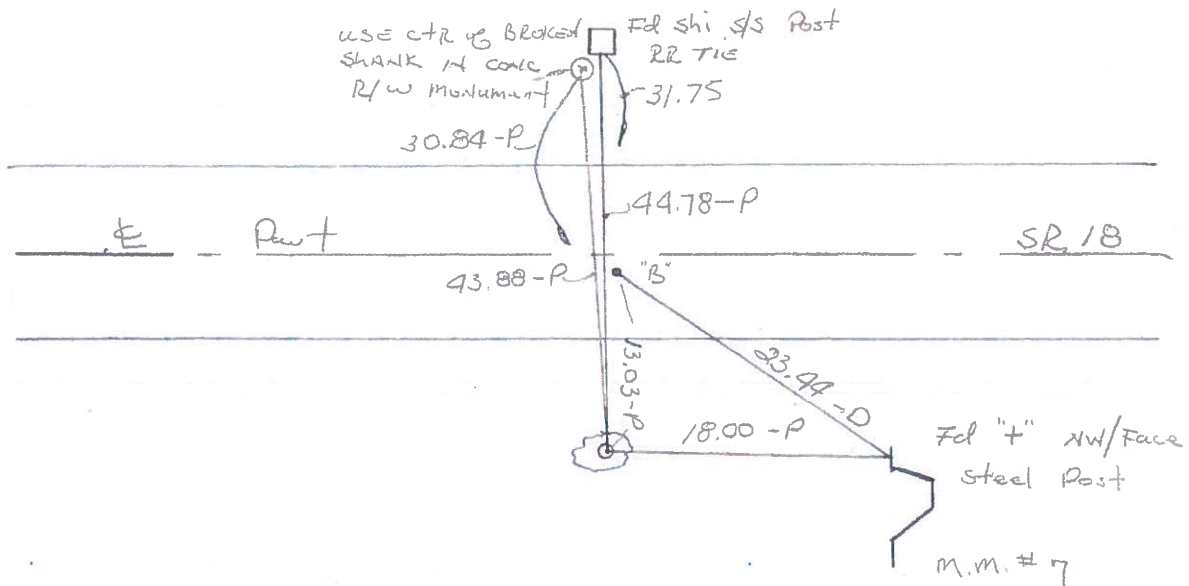
S.L.M. 370+74

Set P.K./WASHER  
Point "B"  
7.27.87  
Sork

PT "A" = 16  
PT "B" = 16A



Found stone 1' below surface, with 3/4" I.D. I. PIPE Bent over top of stone. ADJUSTED pipe so the ends of the pipe is over the high point of stone. Put field tile pieces over stone.



"B" Fol SMALL CONC Nail 1.2' RT of & Pavt set 11.21.83 BY HOFFMAN ON Re constructed survey line of 1927

Q.D.O.T. DISTRICT 2 SURVEY OFFICE

SHEET \_\_\_\_\_ OF \_\_\_\_\_

County WOOD S.R. 18

Date 11-21-83

Township JACKSON

Weather clear

Section 25

Temp. +40°

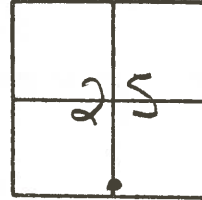
T3N, R9E

Personnel HOFFMAN

LOEHRE

HOYSEHOLDER

BARNHISEL



Set small CONC. nail; 1.2' RT. of PAUT ON & survey of 1927  
 16A

