

O.D.O.T. DISTRICT 2 SURVEY OFFICE (USE ONLY)

PERSONNEL

REFERENCE NO. 16 B

SHEET 7 OF 52

NOTES AUBLE

DATE 5-23-23

ROUTE SR 18

H.C. NIESE

WEATHER CALM

COUNTY WOOD

R.C. AUBLE

TEMP. 79°

TOWNSHIP JACKSON

DWG BY NIESE

PID PAVETRAIN

SECTION 25

T 3 N R 9 E

TYPE MONUMENT MAG/WASHER

ON SURFACE - ~~BELOW~~ ON

OFFSET CL PAVEMENT 0.5' ~~±~~ : RT

8.7' TO RT EDGE PAVEMENT

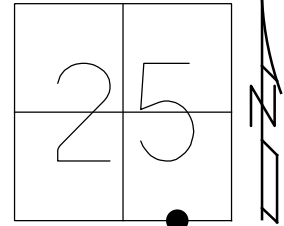
STATION: 382+91

HORIZ.DATUM: NAD83(2011)

GEOID: NAVD88 2021A

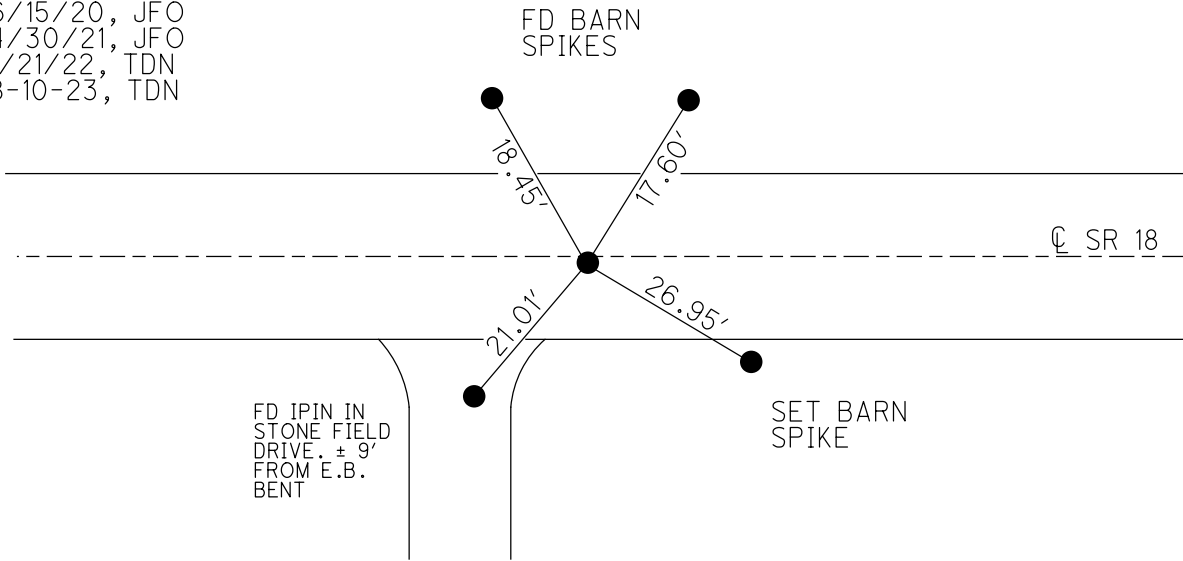
GRID: NORTHING: 554930.506

EASTING: 1618950.838



RECORD:

- SET P.K.NAIL
11/21/83
- FD P.K.NAIL
6/16/87
- SET P.K.NAIL
7/7/87, CL
- FD P.K./WASHER
6/3/11, SAH
- SET MAG/WASHER
9/1/11, MC
- FD MAG/WASHER
REFB16
- 6/15/20, JFO
- 4/30/21, JFO
- 1/21/22, TDN
- 8-10-23, TDN



O.D.O.T. DISTRICT 2 SURVEY OFFICE (USE ONLY)

PERSONNEL

REFERENCE NO. 16 B

SHEET 7 OF 52

NOTES RHOADES
 H.C. O'DONNELL
 R.C. RHOADES

DATE 4/30/21
 WEATHER PTLY. CLOUDY
 TEMP. 48°

ROUTE SR 18
 COUNTY WOOD
 TOWNSHIP JACKSON
 SECTION 25
 T 3 N R 9 E

DWG BY NIESE PID PAVETRAIN

TYPE MONUMENT MAG/WASHER

ON SURFACE - ~~BELOW~~ ON

OFFSET CL PAVEMENT 0.5' ~~LT~~ : RT

8.7' TO RT EDGE PAVEMENT

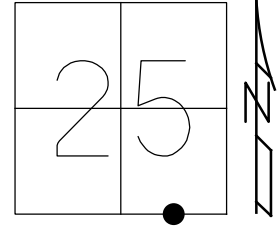
STATION: 369+80.32

HORZ. DATUM: NAD83(2011)

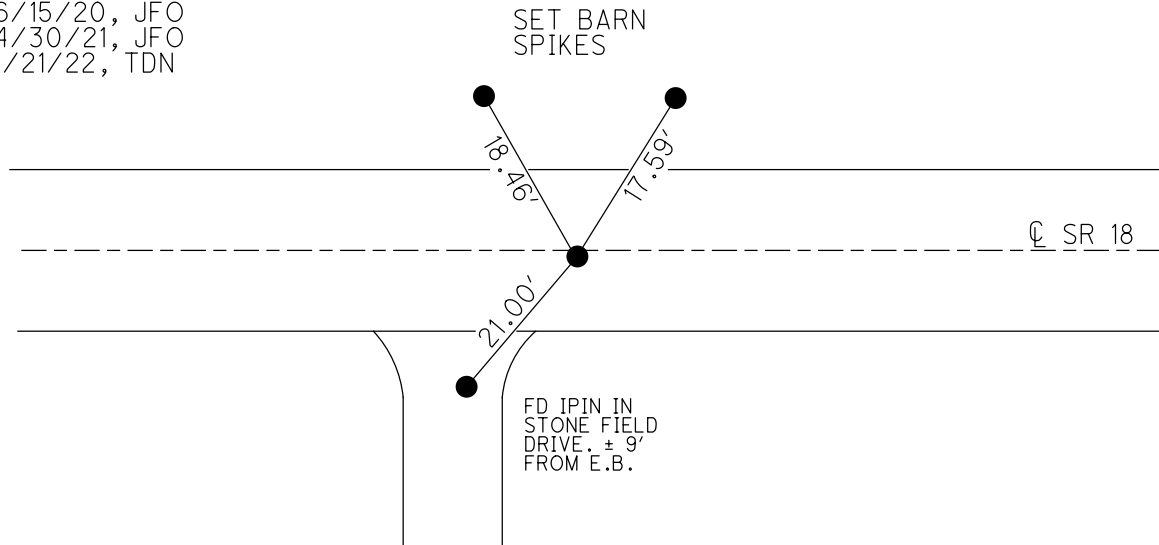
GEOID: NAVD88 2021A

GRID: NORTHING: 554930.506

EASTING: 1618950.838



RECORD:
 SET P.K.NAIL
 11/21/83
 FD P.K.NAIL
 6/16/87
 SET P.K.NAIL
 7/7/87, CL
 FD P.K./WASHER
 6/3/11, SAH
 SET MAG/WASHER
 9/1/11, MC
 FD MAG/WASHER
 REFB16
 6/15/20, JFO
 4/30/21, JFO
 1/21/22, TDN



O.D.O.T. DISTRICT 2 SURVEY OFFICE (USE ONLY)

PERSONNEL _____ REFERENCE NO. 16 B SHEET 7 OF 51

NOTES CANTERBURY DATE 6/3/11 ROUTE SR 18
H.C. HUSS WEATHER PT.CLOUDY COUNTY WOOD
R.C. HARBAUGH TEMP. 60° TOWNSHIP JACKSON
SECTION 25

DWG BY O'DONNELL PID PAVETRAIN T 3 N R 9 E

TYPE MONUMENT P.K./WASHER

ON SURFACE - ~~BELOW~~ ON

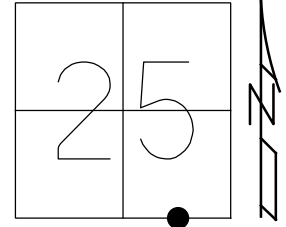
~~LEFT~~ - CL PAV'T - RIGHT 0.5'

8.7' TO RT EDGE PAVEMENT

STATION: 382+90.15

HORZ.DATUM: NAD83 (2011) GEOID: NAVD88-2012A

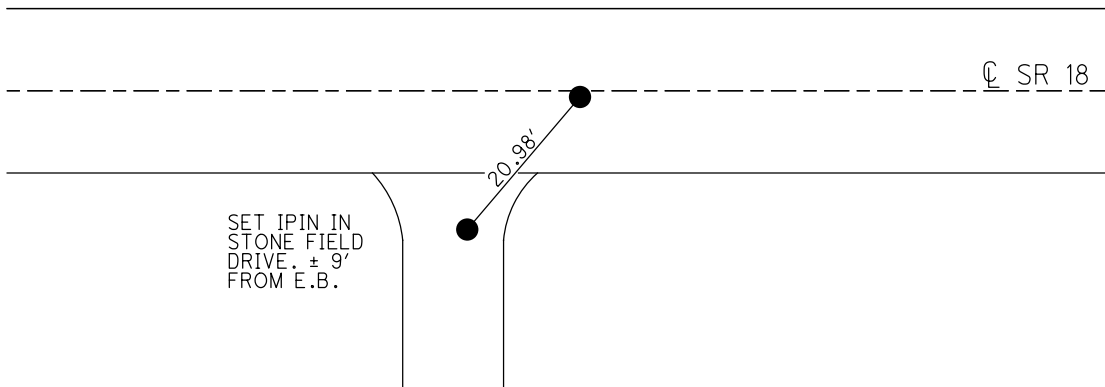
GRID: NORTHING: 554930.506 EASTING: 1618950.838



RECORD:
6/16/87 FD P.K.NAIL ON SURFACE, 0.5' RT CL.
11/21/83 SET P.K.NAIL 0.5' RT OF CL PAV'T
ON RECONSTRUCTED 1927 SURVEY LINE.

SET P.K.NAIL
7/7/87, CL

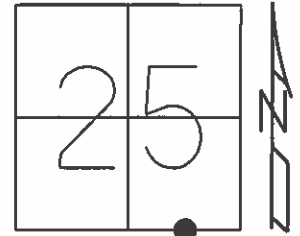
FD P.K./WASHER
GPS, REFC16
SET MAG/WASHER
9/1/11, MC
FD MAG/WASHER
REFB16
6/15/20, JFO



O.D.O.T. DISTRICT 2 SURVEY OFFICE (USE ONLY)

PERSONNEL _____ REFERENCE NO. 16 B SHEET 7 OF 26
NOTES CANTERBURY DATE 6/3/11 ROUTE SR 18
H.C. HUSS WEATHER PT.CLOUDY COUNTY WOOD
R.C. HARBAUGH TEMP. 60° TOWNSHIP JACKSON
SECTION 25
T 3 N R 9 E

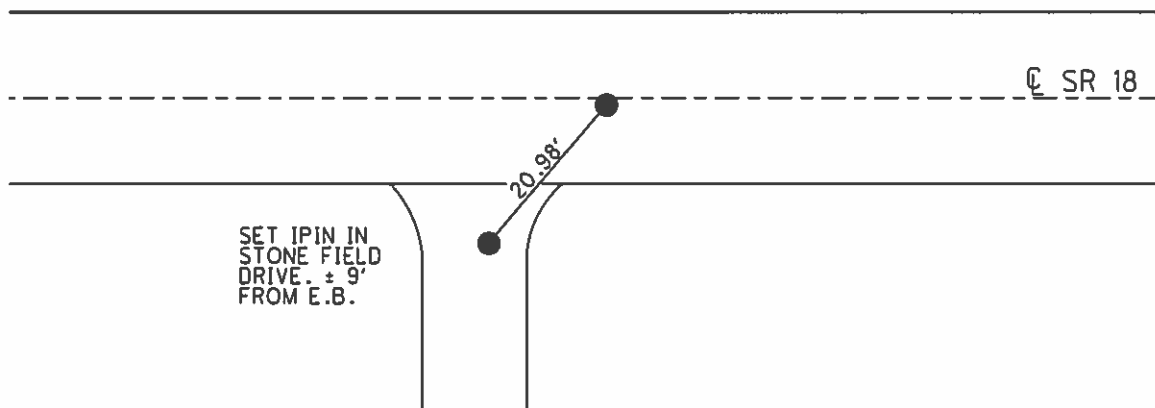
TYPE MONUMENT P.K./WASHER
ON SURFACE - ~~BELOW~~ ON
~~LEFT~~ - CL PAV'T - RIGHT 0.5'
8.7' TO RT EDGE PAVEMENT
S.L.M. 382+90.15
Grid: Northing: 554930.596 Easting: 1618950.755



RECORD:
6/16/87 FD P.K.NAIL ON SURFACE, 0.5' RT CL.
11/21/83 SET P.K.NAIL 0.5' RT OF CL PAV'T
ON RECONSTRUCTED 1927 SURVEY LINE.

SET P.K.NAIL
7/7/87, CL

FD P.K./WASHER
GPS, REFC16
SET MAG/WASHER
9/1/11, MC



O.D.O.T. DISTRICT 2 SURVEY OFFICE

PERSONNEL

REFERENCE NO. 16B SHEET 2 OF

NOTES HOFFMAN

H.C. LOEHRKE

R.C. BARNHISEL

SOCKMAN

DATE 6-16-87

WEATHER CLEAR

TEMP. 85°

ROUTE SR 18

COUNTY WOOD

TOWNSHIP JACKSON

SECTION 25

T3 N R 9 E

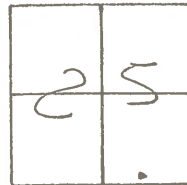
TYPE MONUMENT P.K. Nail

ON SURFACE - ~~BELOW~~ YES

LEFT - ~~C~~ PAV'T. - RIGHT 0.5

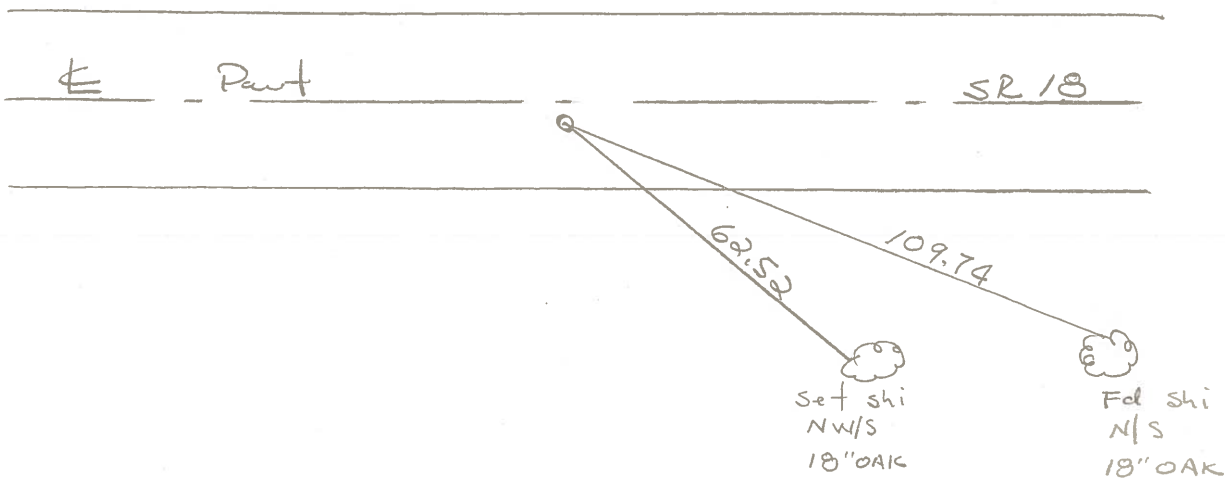
7.7 TO RT EDGE PAVEMENT

S.L.M. 383 +84



11-21-83 - HOFFMAN -
Set P.K. 0.5' Rt of ~~the~~ Pavt
on Re-constructed 1927 survey line

RESET PK
7-7-87
GL



OD.O.T. DISTRICT 2 SURVEY OFFICE

SHEET _____ OF _____

County WOOD S.R. 18

Date 11-21-83

Township JACKSON

Weather clear

Section 25

Temp. +40°

T3N, R9E

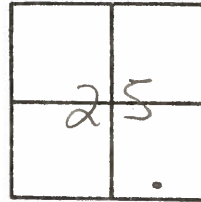
Personnel HOFFMAN

LOEHRKE

HOUSEHOLDER

BARNHISEL

16B



Set P.K. Nail ; 0.5' RT. of & PAUT SR18 on & survey of 1927

