

O.D.O.T. DISTRICT 2 SURVEY OFFICE (USE ONLY)

PERSONNEL

REFERENCE NO. 16 C

SHEET 8 OF 52

NOTES RHOADES
 H.C. O'DONNELL
 R.C. RHOADES

DATE 4/30/21
 WEATHER PTLY. CLOUDY
 TEMP. 75°

ROUTE SR 18
 COUNTY WOOD
 TOWNSHIP JACKSON
 SECTION 25

DWG BY NIESE PID PAVETRAIN

T 3 N R 9 E

TYPE MONUMENT MAG/WASHER

ON SURFACE - ~~BELOW~~ ON

OFFSET CL PAVEMENT 5.5' ~~±~~ : RT
4.0' TO RT EDGE PAVEMENT

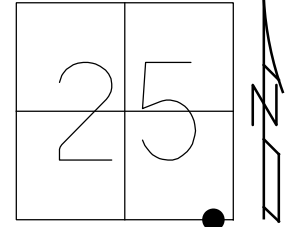
STATION: 391+26.96

HORZ. DATUM: NAD83(2011)

GEOID: NAVD88 2012A

GRID: NORTHING: 554922.364

EASTING: 1619787.621

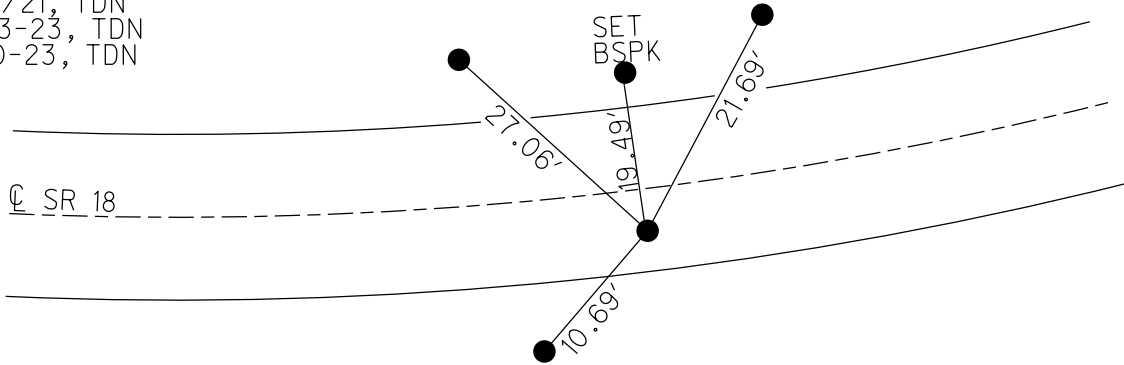


RECORD:
 FD SM.P.K.NAIL
 SET BY OTHERS
 6/16/87
 SET P.K./WASHER
 7/7/87, CL
 FD P.K.NAIL
 6/16/10, BG
 FD P.K./WASHER
 7/28/11, MC
 SET MAG/WASHER
 9/1/11, MC
 FD MAG/WASHER
 REFC16
 6/15/20, JFO
 4/30/21, JFO
 1/21/21, TDN
 5-23-23, TDN
 8-10-23, TDN

FD BARN
 SPIKES
 (ALL DIRECT)

SET
 BSPK

FD 5/8" IPIN
 IN BERM STONE
 1.5' S EB



O.D.O.T. DISTRICT 2 SURVEY OFFICE (USE ONLY)

PERSONNEL

REFERENCE NO. 16 C

SHEET 8 OF 52

NOTES RHOADES

DATE 4/30/21

ROUTE SR 18

H.C. O'DONNELL

WEATHER PTLY. CLOUDY

COUNTY WOOD

R.C. RHOADES

TEMP. 75°

TOWNSHIP JACKSON

DWG BY NIESE

PID PAVETRAIN

SECTION 25

T 3 N R 9 E

TYPE MONUMENT MAG/WASHER

ON SURFACE - ~~BELOW~~ ON

OFFSET CL PAVEMENT 5.5' ~~ET~~ : RT

4.0' TO RT EDGE PAVEMENT

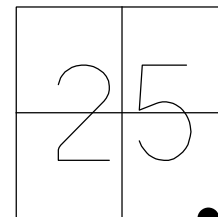
STATION: 391+26.96

HORIZ.DATUM: NAD83(2011)

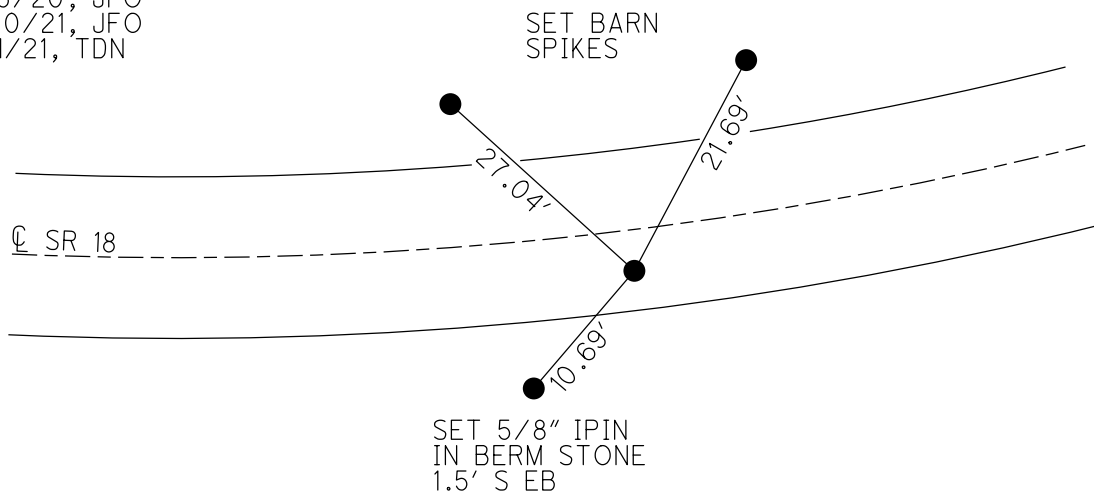
GEOID: NAVD88 2012A

GRID: NORTHING: 554922.364

EASTING: 1619787.621



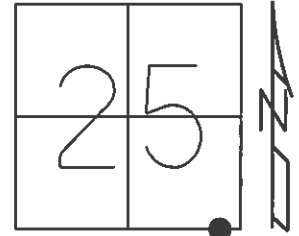
RECORD:
 FD SM.P.K.NAIL
 SET BY OTHERS
 6/16/87
 SET P.K./WASHER
 7/7/87, CL
 FD P.K.NAIL
 6/16/10, BG
 FD P.K./WASHER
 7/28/11, MC
 SET MAG/WASHER
 9/1/11, MC
 FD MAG/WASHER
 REFC16
 6/15/20, JFO
 4/30/21, JFO
 1/21/21, TDN



O.D.O.T. DISTRICT 2 SURVEY OFFICE (USE ONLY)

PERSONNEL _____ REFERENCE NO. 16 C SHEET 8 OF 26
NOTES CANTERBURY DATE 7/28/11 ROUTE SR 18
H.C. HUSS WEATHER PT.CLOUDY COUNTY WOOD
R.C. HARBAUGH TEMP. 75° TOWNSHIP JACKSON
SECTION 25
T 3 N R 9 E

TYPE MONUMENT P.K./WASHER
ON SURFACE - ~~BELOW~~ ON _____
~~LEFT~~ - CL PAV'T - RIGHT 5.5'
4.0' TO RT EDGE PAVEMENT
S.L.M. 391+26.96

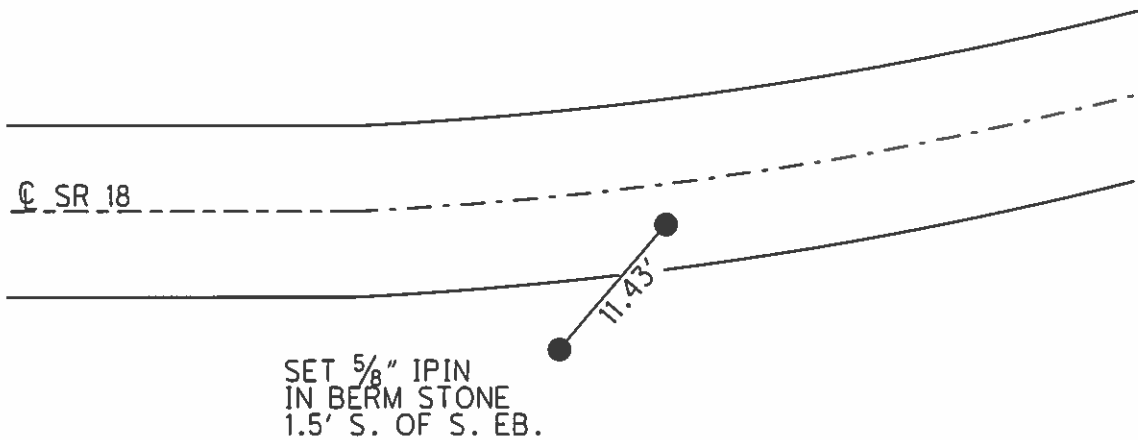


Grid: Northing: 554922.432 Easting: 1619787.519

FD SM.P.K.NAIL
SET BY OTHERS
FOR BRIDGE SURVEY
6/16/87
SET P.K./WASHER
7/7/87, CL

FD P.K.NAIL
6/15/10
GPS, SVD16
6/16/10, BG

SET MAG/WASHER
9/1/11, MC



O.D.O.T. DISTRICT 2 SURVEY OFFICE

PERSONNEL

REFERENCE NO. 16C

SHEET 2A OF _____

NOTES HOFFMAN

H.C. LOEHRKE

R.C. BARNHISEH

SOCKMAN

DATE 6-16-87

WEATHER CLEAR

TEMP. 85°

ROUTE SR 18

COUNTY Wood

TOWNSHIP JACKSON

SECTION 25

T3 N R 9 E

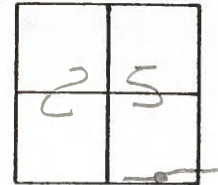
TYPE MONUMENT SMALL P.K. Nail - BY OTHERS

ON SURFACE - ~~BELOW~~ yes

~~LEFT - & PAV'T. - RIGHT~~ 5.4'

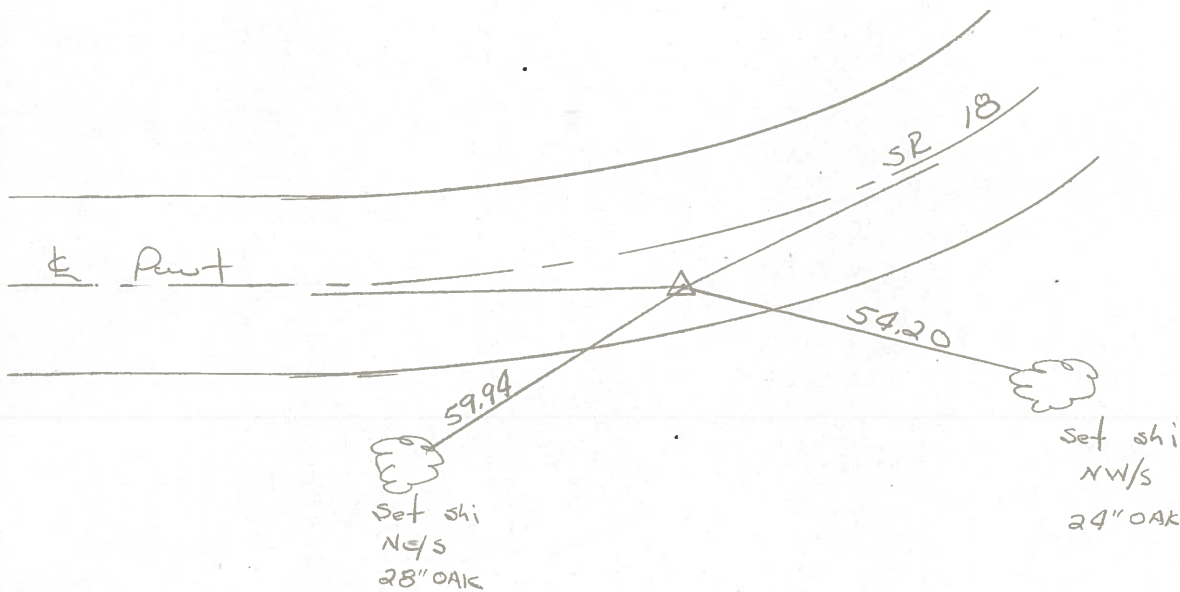
3.9' TO RT EDGE PAVEMENT

S.L.M. 392 + 21



For small P.K. FOR P.I. FOR BRIDGE SURVEY - BY OTHERS -

SET P.K./WASHER
7-7-87
C.L.



O.D.O.T. DISTRICT 2 SURVEY OFFICE (USE ONLY)

PERSONNEL _____ REFERENCE NO. 16 C SHEET 8 OF 51
 NOTES CANTERBURY DATE 7/28/11 ROUTE SR 18
 H.C. HUSS WEATHER PT.CLOUDY COUNTY WOOD
 R.C. HARBAUGH TEMP. 75° TOWNSHIP JACKSON
 SECTION 25
 DWG BY O'DONNELL PID PAVETRAIN T 3 N R 9 E

TYPE MONUMENT P.K./WASHER

ON SURFACE - ~~BELOW~~ ON

~~LEFT~~ - CL PAV'T - RIGHT 5.5'

4.0' TO RT EDGE PAVEMENT

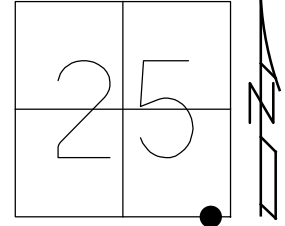
STATION: 391+26.96

HORZ.DATUM: NAD83 (2011)

GEOID: NAVD88-2012A

GRID: NORTHING: 554922.364

EASTING: 1619787.621



FD SM.P.K.NAIL
 SET BY OTHERS
 FOR BRIDGE SURVEY
 6/16/87
 SET P.K./WASHER
 7/7/87, CL

FD P.K.NAIL
 6/15/10
 GPS, SVD16
 6/16/10, BG

SET MAG/WASHER
 9/1/11, MC
 FD MAG/WASHER
 REFC16
 6/15/20, JFO

