

O.D.O.T. DISTRICT 2 SURVEY OFFICE (USE ONLY)

PERSONNEL

REFERENCE NO. 21

SHEET 16 OF 52

NOTES AUBLE

DATE 8/10/23

ROUTE SR 18

H.C. NIESE

WEATHER BREEZY

COUNTY WOOD

R.C. AUBLE

TEMP. 79°

TOWNSHIP HENRY

SECTION 29

DWG BY NIESE

PID PAVETRAIN

T 3 N R 10 E

TYPE MONUMENT MAG/WASHER

ON SURFACE - ~~BELOW~~ ON

OFFSET \varnothing PAVEMENT 7.5' ~~LT~~ : RT

2.0' TO RT EDGE PAVEMENT

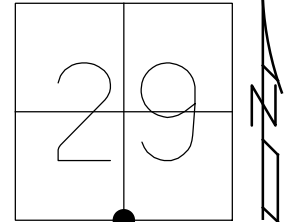
STATION: 474+27.68

HORIZ.DATUM: NAD83(2011)

GEOID: NAVD88 2012A

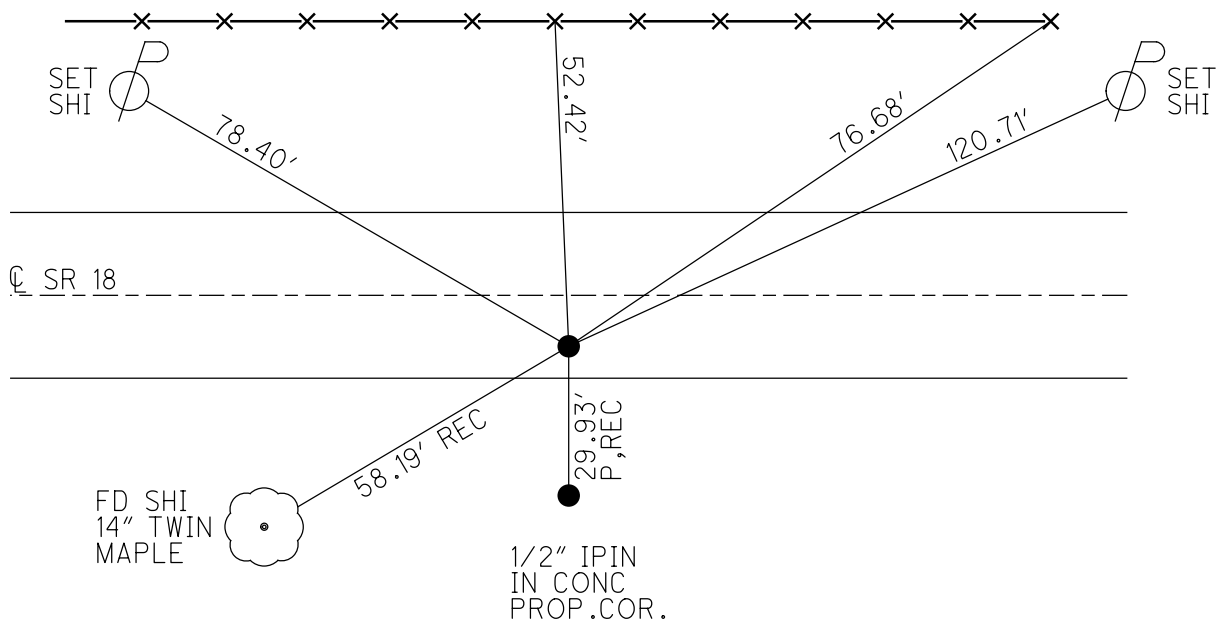
GRID: NORTHING: 554816.369

EASTING: 1628085.260



RECORD:
 SET P.K./WASHER
 7/7/87, CL
 FD P.K. SHANK
 6/16/10, BG
 7/28/11, MC
 SET MAG/WASHER
 1/25/12, SAH
 FD MAG/WASHER
 REF21
 6/15/20, JFO
 5/5/21, JFO
 1/21/22, TDN
 SET MAG/WASHER
 8-10-23, TDN

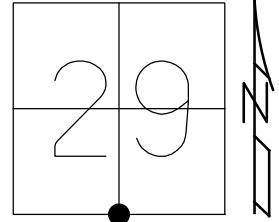
SET "+" ±3' UP
 STEEL FENCE
 POSTS



O.D.O.T. DISTRICT 2 SURVEY OFFICE (USE ONLY)

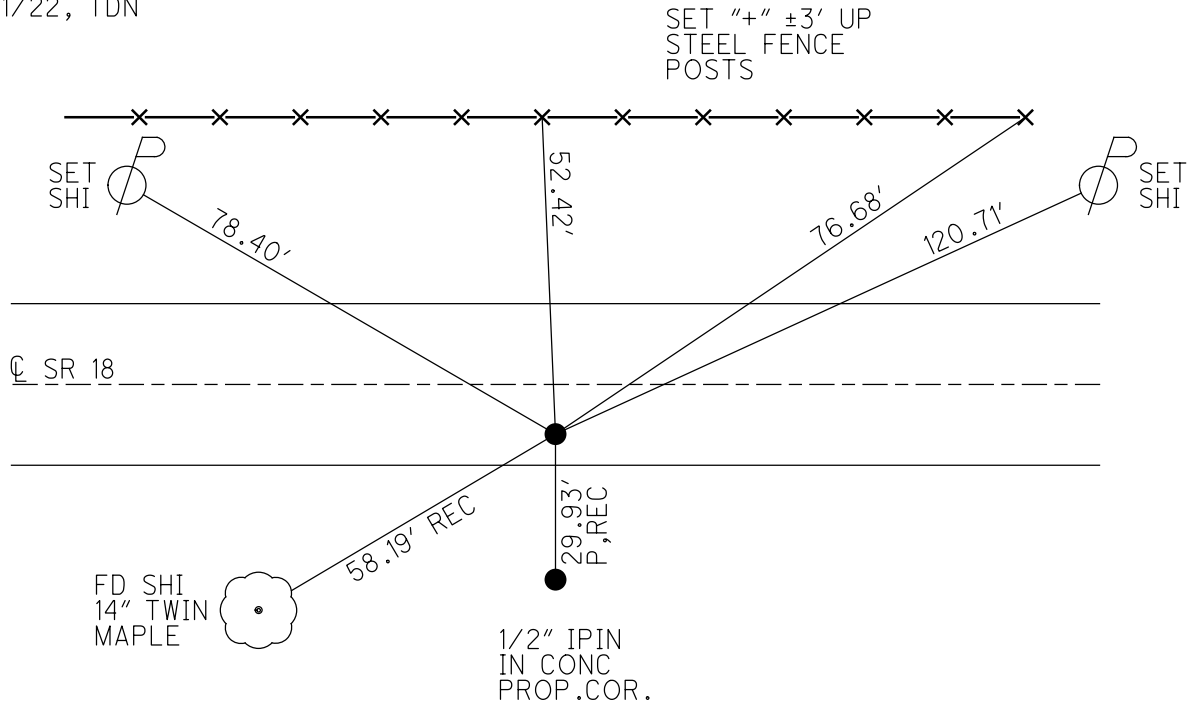
PERSONNEL _____ REFERENCE NO. 21 SHEET 16 OF 52
 NOTES AUBLE DATE 5/5/21 ROUTE SR 18
 H.C. NIESE WEATHER CLOUDY COUNTY WOOD
 R.C. O'DONNELL TEMP. 46° TOWNSHIP HENRY
 DWG BY NIESE PID PAVETRAIN SECTION 29
 T 3 N R 10 E

TYPE MONUMENT MAG/WASHER
 ON SURFACE - ~~BELOW~~ ON
 OFFSET 2.0' \perp TO RT PAVEMENT 7.5' \perp : RT
2.0' TO RT EDGE PAVEMENT
 STATION: 474+27.68



HORZ. DATUM: NAD83(2011) GEOID: NAVD88 2012A
 GRID: NORTHING: 554816.369 EASTING: 1628085.260

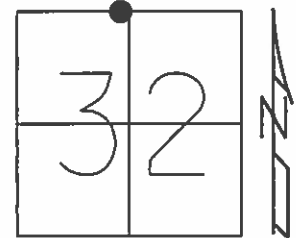
RECORD:
 SET P.K./WASHER
 7/7/87, CL
 FD P.K. SHANK
 6/16/10, BG
 7/28/11, MC
 SET MAG/WASHER
 1/25/12, SAH
 FD MAG/WASHER
 REF21
 6/15/20, JFO
 5/5/21, JFO
 1/21/22, TDN



O.D.O.T. DISTRICT 2 SURVEY OFFICE (USE ONLY)

PERSONNEL _____ REFERENCE NO. 21 SHEET 15 OF 26
 NOTES CANTERBURY DATE 7/28/11 ROUTE SR 18
 H.C. CANTERBURY WEATHER CLEAR COUNTY WOOD
 R.C. HARBAUGH TEMP. 85° TOWNSHIP HENRY
 _____ SECTION 32
 _____ T 3 N R 10 E

TYPE MONUMENT P.K.SHANK
~~ON SURFACE~~ - BELOW 0.25'
~~LEFT~~ - CL PAV'T - RIGHT 7.5'
2.0' TO RT EDGE PAVEMENT
 S.L.M. 474+27.68



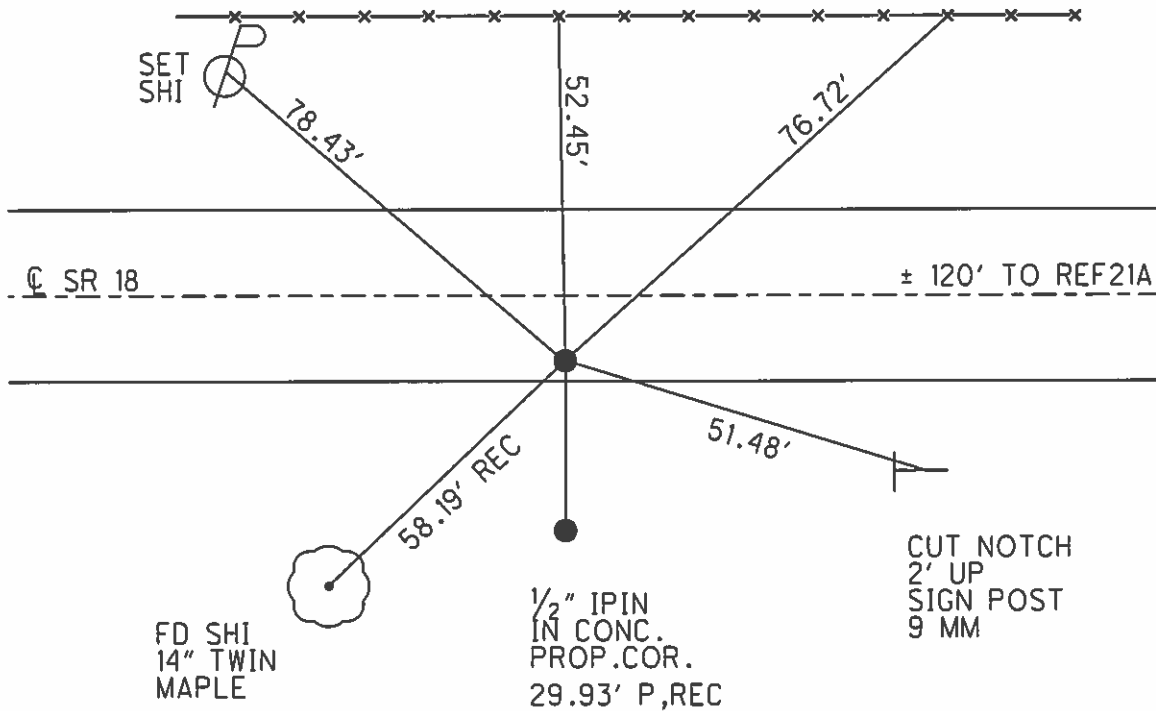
Grid: Northing: 554816.301 Easting: 1628085.245

SET P.K./WASHER
 7/7/87, CL

FD P.K.SHANK
 6/15/10
 GPS, SV21
 6/16/10, BG

SET MAG/WASHER
 1/25/12, SAH

SET "+" ±3' UP
 STEEL FENCE
 POSTS



O.D.O.T. DISTRICT 2 SURVEY OFFICE

PERSONNEL

REFERENCE NO. 21

SHEET 6 OF

NOTES HOFFMAN

H.C. LOEHRKE

R.C. BAENHISEL

SOCKMAN

DATE 6-17-87

WEATHER CLEAR

TEMP. 80°

ROUTE SR 18

COUNTY WOOD

TOWNSHIP HENRY

SECTION 32

T3 N R 10 E

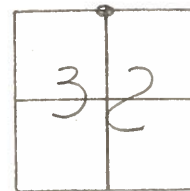
TYPE MONUMENT PK Nail

ON SURFACE ~~=BELOW~~ YES

~~LEFT - C~~ PAV'T. - RIGHT 6.8

1.7 TO RT EDGE PAVEMENT

S.L.M. 475 + 19



ORIGINAL of PK UNKNOWN
APPARENT N¹/₄ CORNER
SECTION 32

Set PK/WASHER
7-7-87
C.L.

