

O.D.O.T. DISTRICT 2 SURVEY OFFICE (USE ONLY)

PERSONNEL

REFERENCE NO. 22

SHEET 18 OF 52

NOTES AUBLE

DATE 5/5/21

ROUTE SR 18

H.C. NIESE

WEATHER CLOUDY

COUNTY WOOD

R.C. O'DONNELL

TEMP. 46°

TOWNSHIP HENRY

SECTION 32

DWG BY NIESE

PID PAVETRAIN

T 3 N R 10 E

TYPE MONUMENT MAG/WASHER

ON SURFACE - ~~BELOW~~ ON

OFFSET CL PAVEMENT 7.0' ~~ET~~ : RT

2.5' TO RT EDGE PAVEMENT 9.0' E. OF CL SOUTH

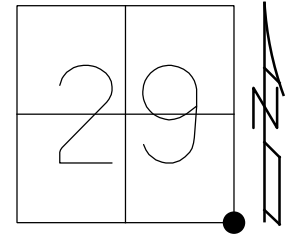
STATION: 501+87.70

HORZ. DATUM: NAD83(2011)

GEOID: NAVD88 2012A

GRID: NORTHING: 554808.585

EASTING: 1630845.172



TOP OF 5TH BRICK
NEAR COR. CSX SIGN

ENTRANCE TO
RAIL YARD

SET
SHI

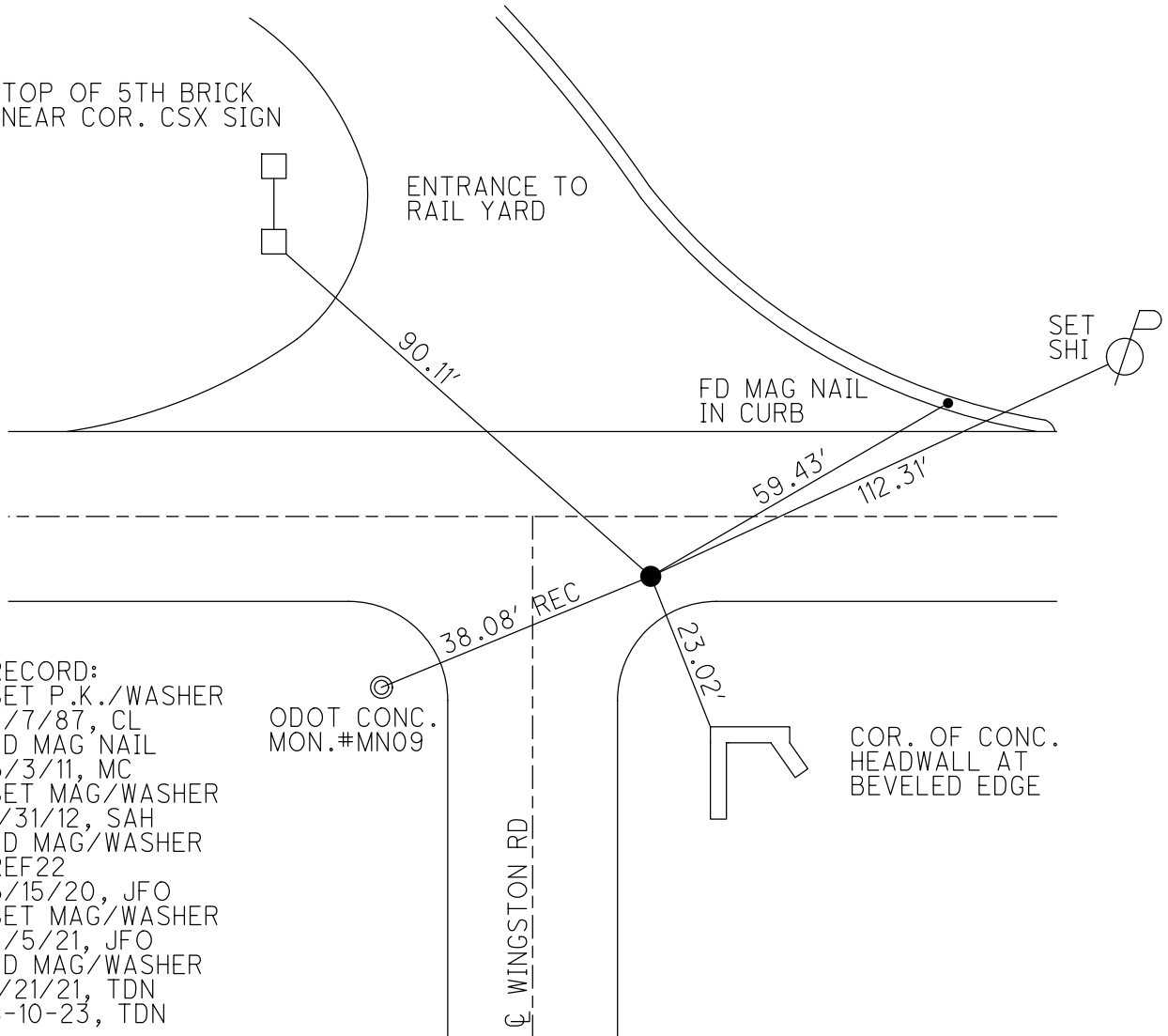
FD MAG NAIL
IN CURB

RECORD:
SET P.K./WASHER
7/7/87, CL
FD MAG NAIL
6/3/11, MC
SET MAG/WASHER
1/31/12, SAH
FD MAG/WASHER
REF22
6/15/20, JFO
SET MAG/WASHER
5/5/21, JFO
FD MAG/WASHER
1/21/21, TDN
8-10-23, TDN

ODOT CONC.
MON. #MN09

COR. OF CONC.
HEADWALL AT
BEVELED EDGE

CL WINGSTON RD



O.D.O.T. DISTRICT 2 SURVEY OFFICE (USE ONLY)

PERSONNEL

REFERENCE NO. 22

SHEET 18 OF 52

NOTES AUBLE

DATE 5/5/21

ROUTE SR 18

H.C. NIESE

WEATHER CLOUDY

COUNTY WOOD

R.C. O'DONNELL

TEMP. 46°

TOWNSHIP HENRY

SECTION 32

DWG BY NIESE PID PAVETRAIN

T 3 N R 10 E

TYPE MONUMENT MAG/WASHER

ON SURFACE - ~~BELOW~~ ON

OFFSET CL PAVEMENT 7.0' ~~±~~ : RT

2.5' TO RT EDGE PAVEMENT 9.0' E. OF CL SOUTH

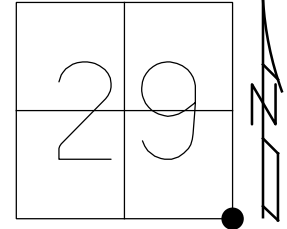
STATION: 501+87.70

HORIZ.DATUM: NAD83(2011)

GEOID: NAVD88 2012A

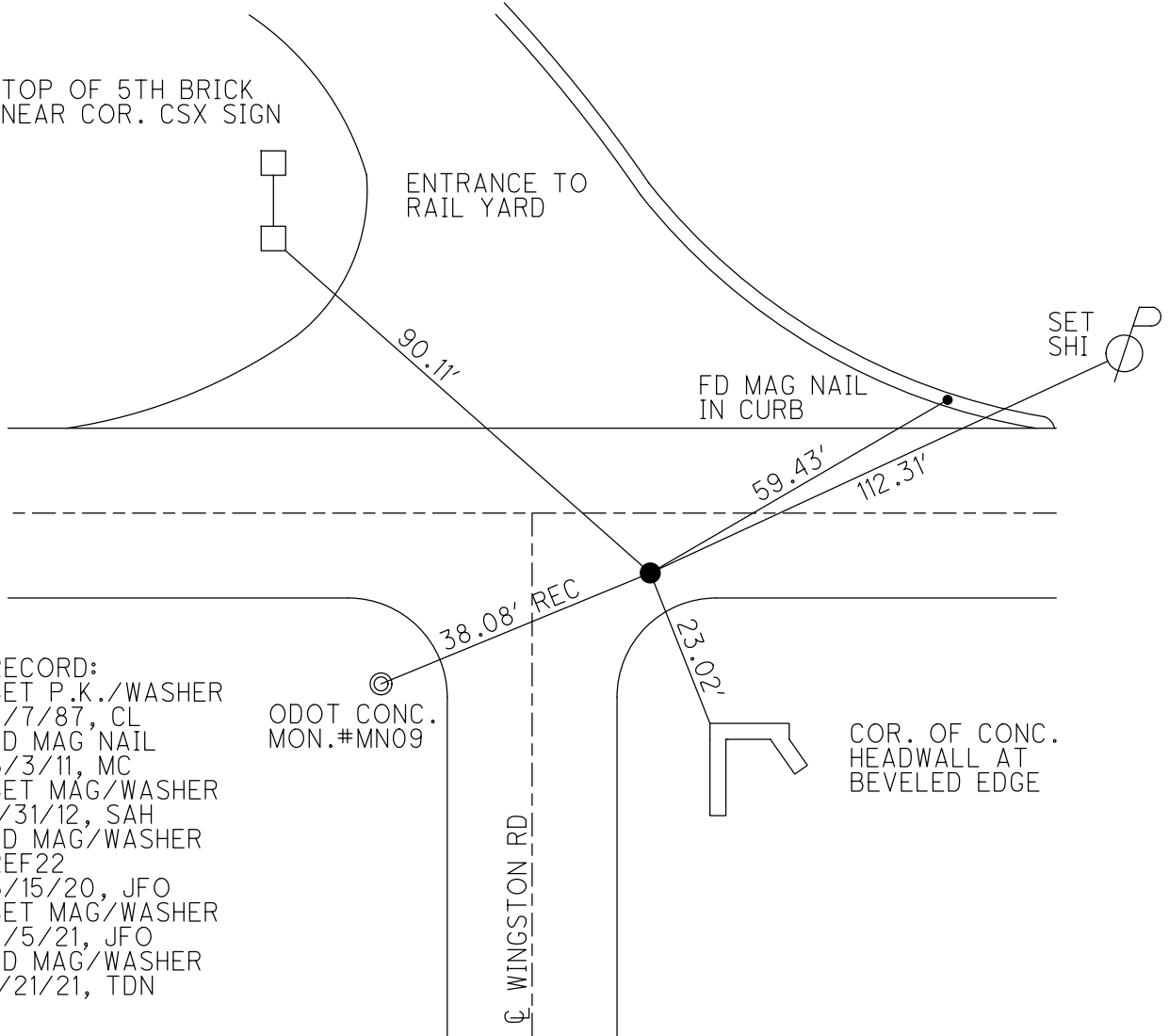
GRID: NORTHING: 554808.585

EASTING: 1630845.172



TOP OF 5TH BRICK
NEAR COR. CSX SIGN

ENTRANCE TO
RAIL YARD



RECORD:
SET P.K./WASHER
7/7/87, CL
FD MAG NAIL
6/3/11, MC
SET MAG/WASHER
1/31/12, SAH
FD MAG/WASHER
REF22
6/15/20, JFO
SET MAG/WASHER
5/5/21, JFO
FD MAG/WASHER
1/21/21, TDN

ODOT CONC.
MON. #MN09

COR. OF CONC.
HEADWALL AT
BEVELED EDGE

CL WINGSTON RD

O.D.O.T. DISTRICT 2 SURVEY OFFICE (USE ONLY)

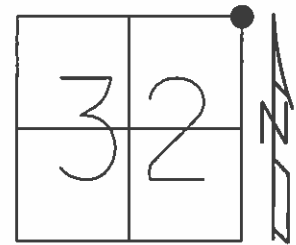
PERSONNEL _____ REFERENCE NO. 22 SHEET 17 OF 26
 NOTES CANTERBURY DATE 6/3/11 ROUTE SR 18
 H.C. HUSS WEATHER FAIR COUNTY WOOD
 R.C. HARBAUGH TEMP. 65° TOWNSHIP HENRY
 _____ SECTION 32
 _____ T 3 N R 10 E

TYPE MONUMENT MAG NAIL

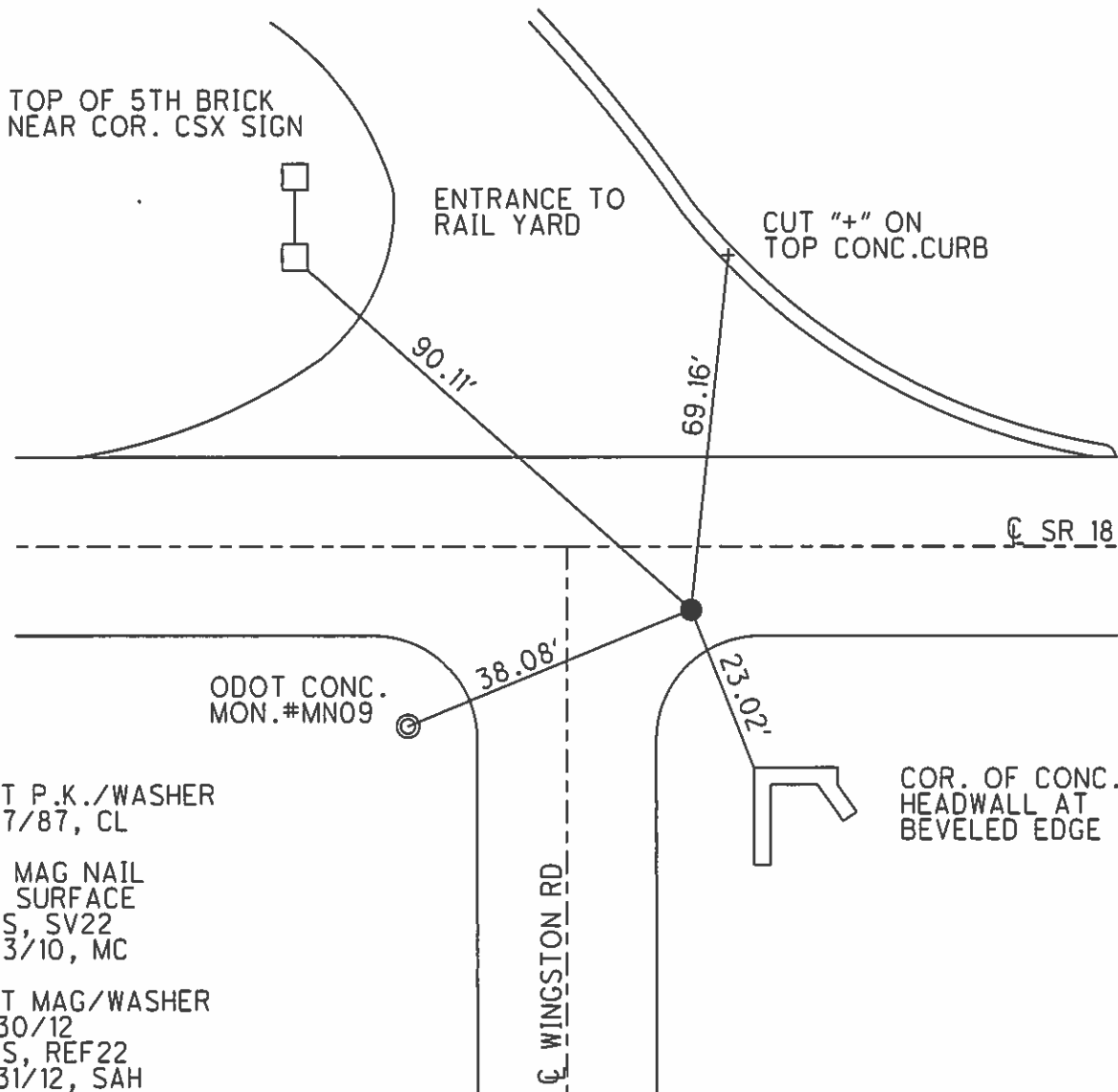
ON SURFACE - ~~BELOW~~ ON _____

~~LEFT~~ - CL PAV'T - RIGHT 7.0', 9' E. OF CL SOUTH
2.5' TO RT EDGE PAVEMENT

S.L.M. 501+87.7



Grid: Northing: 554808.586 Easting: 1630845.152



SET P.K./WASHER
7/7/87, CL

FD MAG NAIL
AT SURFACE
GPS, SV22
6/3/10, MC

SET MAG/WASHER
1/30/12
GPS, REF22
1/31/12, SAH

O.D.O.T. DISTRICT 2 SURVEY OFFICE

PERSONNEL

REFERENCE NO. 22

SHEET 7 OF

NOTES HOFFMAN

H.C. LOHRKE

R.C. BARWISEL

SOCKMAN

DATE 6-17-87

WEATHER CLEAR

TEMP. 80°

ROUTE SR 18

COUNTY WOOD

TOWNSHIP HENRY

SECTION 29

T.3 N R.10 E

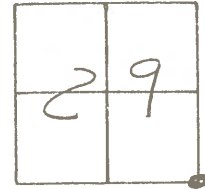
TYPE MONUMENT SMALL RR SPIKE

ON SURFACE - ~~BELOW~~ YES

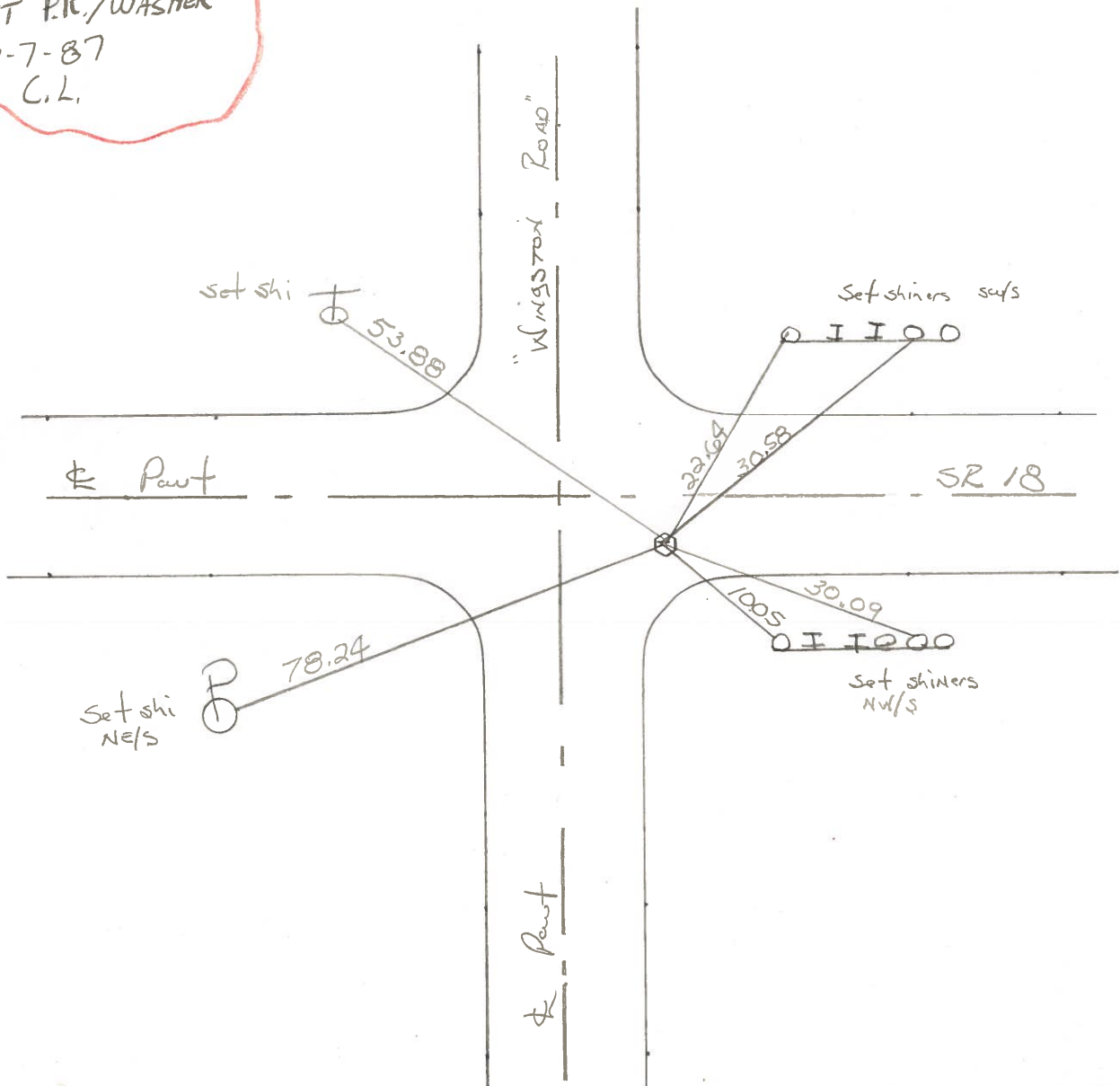
~~LEFT~~ - PAV'T. - RIGHT 6.8

TO EDGE PAVEMENT 9' EAST of Pavt South

S.L.M. 502+79



SET P.K./WASHER
7-7-87
C.L.



O.D.O.T. DISTRICT 2 SURVEY OFFICE

Sht. 2 of 22
S.R. 18

County WOOD

Date 6-15-78

Township HENRY

Weather PT CLOUDY

Section S.E. COR. SEC. 29

Temp. +60°

T3N, R1E

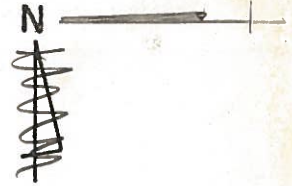
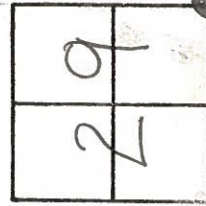
Personnel BURNSIDE

SMITH

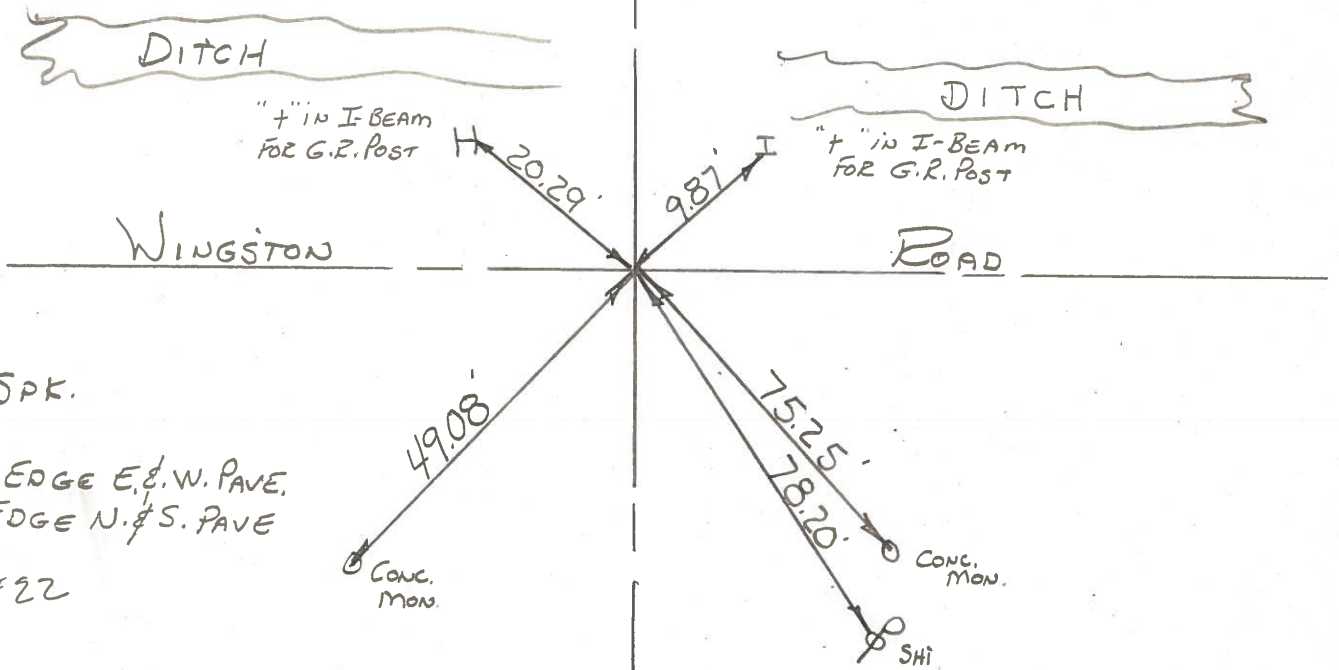
BOWERS

KNAPE

MEAD



#22



FD. R.R. SPK.

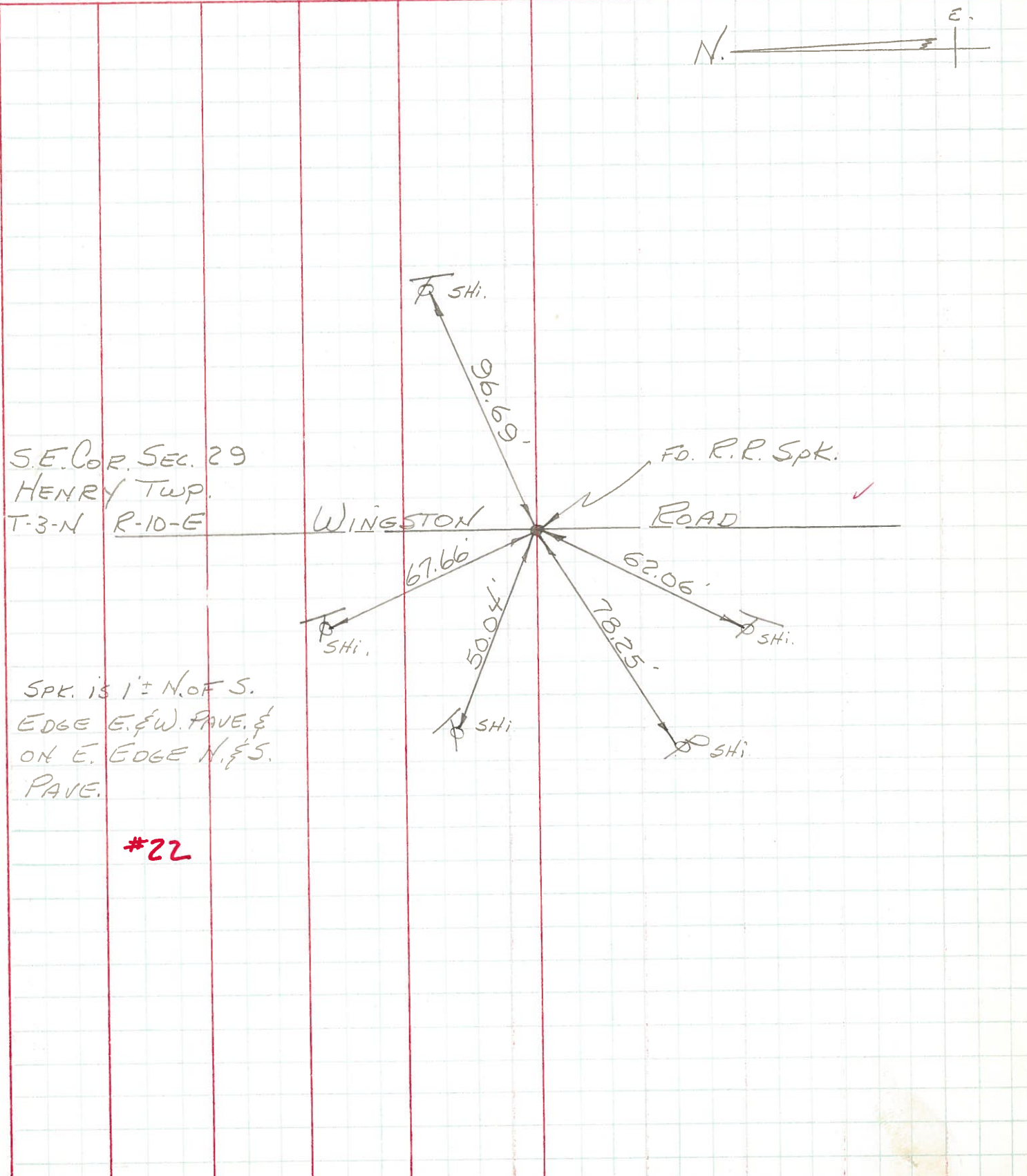
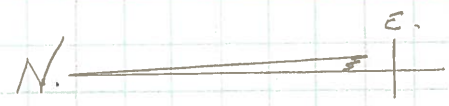
1' N. OF S. EDGE E. & W. PAVE.
& ON E. EDGE N. & S. PAVE

#22

PERSONNEL	TITLE	PERSONNEL	TITLE
BURNSIDE		Rocchini	
SMITH			
BOWERS			
HOLCOMBE			

COUNTY WOOD DATE 6-21-71
 S. R. 18 WEATHER Pt. Cloudy
 SEC. 29 - WINGSTON Ed. TEMP. +75°

DESCRIPTION _____ LEFT _____ CENTER LINE _____ RIGHT _____ JOB NO. _____



S.E. COR. SEC. 29
 HENRY TWP.
 T-3-N R-10-E

SPK. IS 1'± N. OF S.
 EDGE E. & W. PAVE. &
 ON E. EDGE N. & S.
 PAVE.

#22