

O.D.O.T. DISTRICT 2 SURVEY OFFICE (USE ONLY)

PERSONNEL

REFERENCE NO. 22 B

SHEET 20 OF 52

NOTES ASTON

DATE 8-10-23

ROUTE SR 18

H.C. NIESE

WEATHER BREEZY

COUNTY WOOD

R.C. AUBLE

TEMP. 78°

TOWNSHIP HERNY

SECTION 33

DWG BY ASTON

PID PAVETRAIN

T 3 N R 10 E

TYPE MONUMENT MAG/WASHER

ON SURFACE - ~~BELOW~~ ON

OFFSET 8.1' RT : RT

2.6' TO RT EDGE PAVEMENT

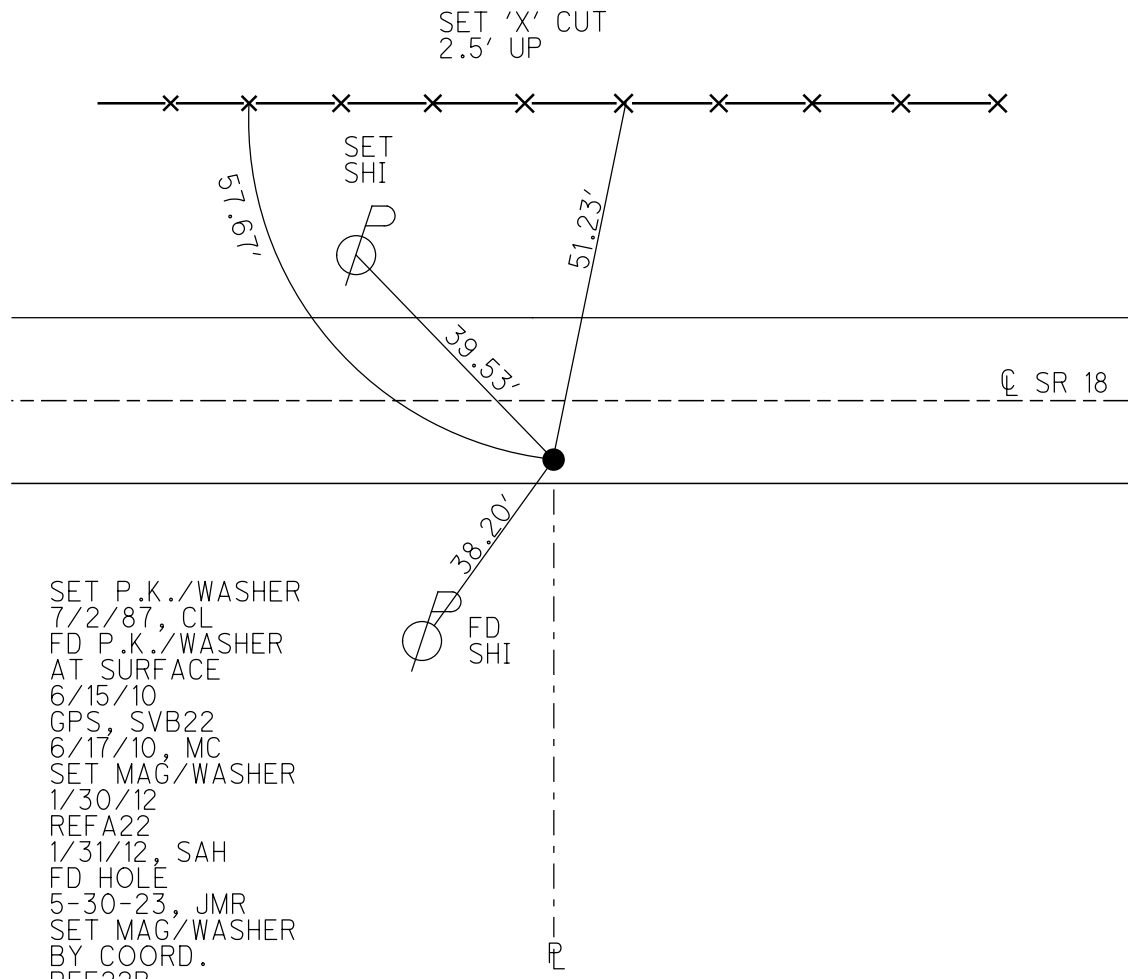
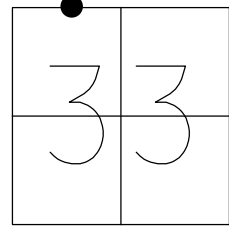
STATION: 515+16.40

HORIZ.DATUM: NAD83(2011)

GEOID: NAVD88 2018

GRID: NORTHING: 554792.886

EASTING: 1632173.872

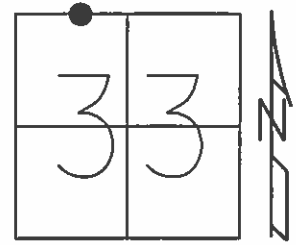


SET P.K./WASHER
 7/2/87, CL
 FD P.K./WASHER
 AT SURFACE
 6/15/10
 GPS, SVB22
 6/17/10, MC
 SET MAG/WASHER
 1/30/12
 REFA22
 1/31/12, SAH
 FD HOLE
 5-30-23, JMR
 SET MAG/WASHER
 BY COORD.
 REF22B
 8-10-23, TDN

O.D.O.T. DISTRICT 2 SURVEY OFFICE (USE ONLY)

PERSONNEL _____ REFERENCE NO. 22 B SHEET 19 OF 26
 NOTES CANTERBURY DATE 6/3/11 ROUTE SR 18
 H.C. HUSS WEATHER FAIR COUNTY WOOD
 R.C. HARBAUGH TEMP. 65° TOWNSHIP HERNY
 _____ SECTION 33
 _____ T 3 N R 10 E

TYPE MONUMENT P.K./WASHER
 ON SURFACE - ~~BELOW~~ ON _____
~~LEFT~~ - CL PAV'T - RIGHT 8.1'
2.6' TO RT EDGE PAVEMENT
 S.L.M. 515+16.40



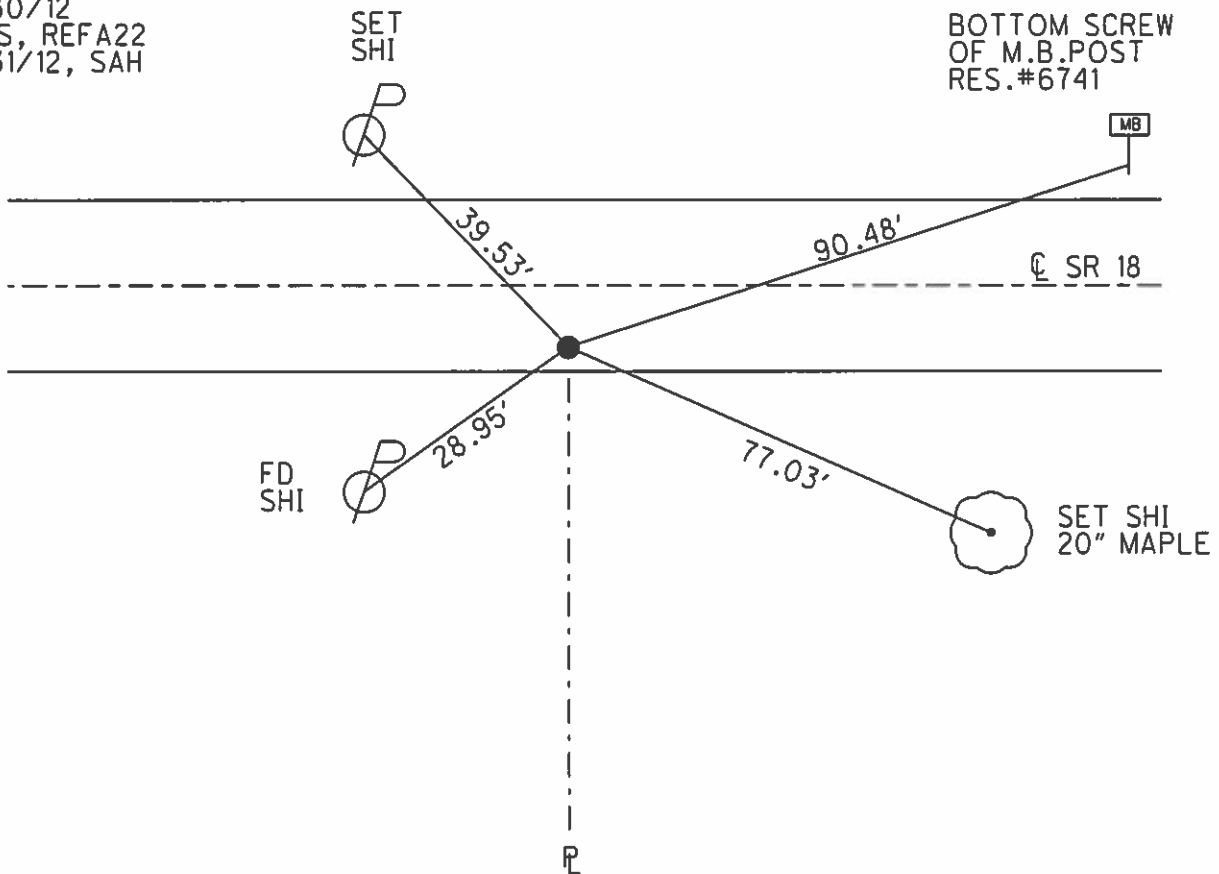
Grid: Northing: 554792.886 Easting: 1632173.872

SET P.K./WASHER
 7/2/87, CL

FD P.K./WASHER
 AT SURFACE
 6/15/10
 GPS, SVB22
 6/17/10, MC

SET MAG/WASHER
 1/30/12
 GPS, REFA22
 1/31/12, SAH

BOTTOM SCREW
 OF M.B. POST
 RES. #6741



O.D.O.T. DISTRICT 2 SURVEY OFFICE

PERSONNEL _____

REFERENCE NO. 22-B

SHEET 7-B OF _____

NOTES HOFFMAN

H.C. _____

DATE 6-24-87

ROUTE SR 18

R.C. BARNHISEL

WEATHER CLEAR

COUNTY WOOD

TEMP. 80°

TOWNSHIP HENRY

SECTION 28

T 3 N R 10 E

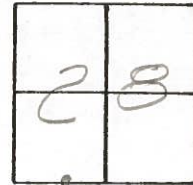
TYPE MONUMENT P.R. SPK - ORIGIN UNKNOWN

ON SURFACE - ~~BELOW~~ YES

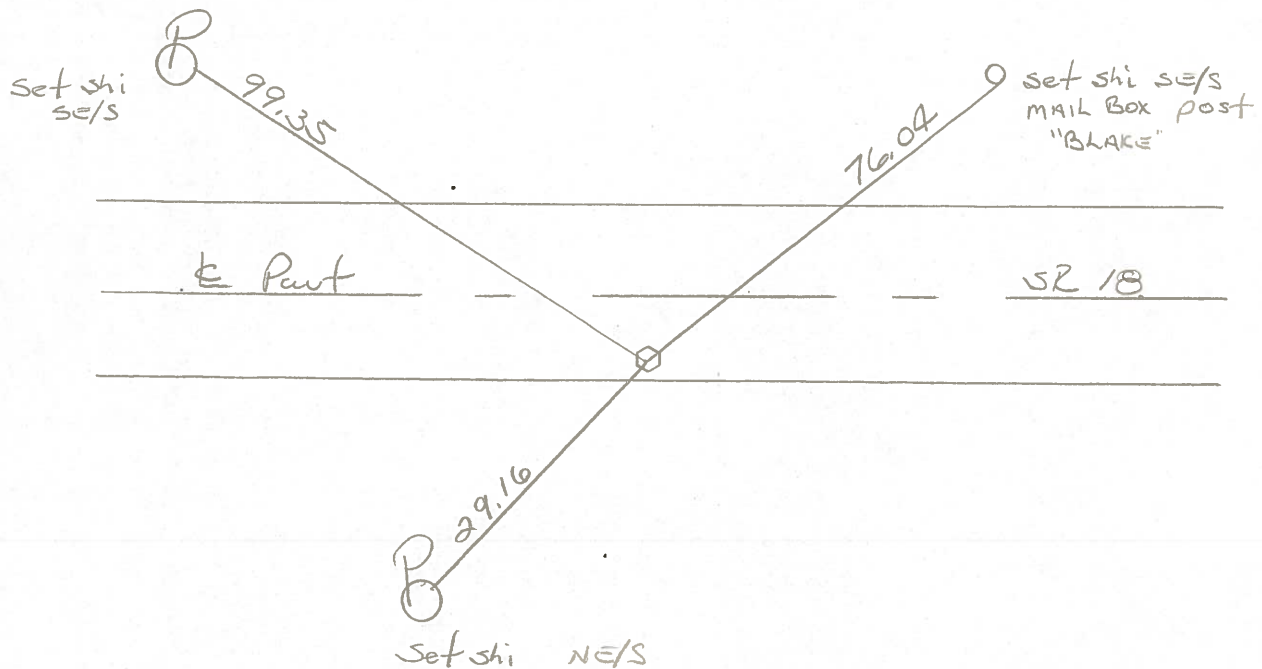
~~LEFT - & PAV'T. - RIGHT~~ 8.0

1.0 TO 2+ EDGE PAVEMENT

S.L.M. 516+08



SET PK/WASHER
 7-21-87
 C.L.



⊕