

O.D.O.T. DISTRICT 2 SURVEY OFFICE (USE ONLY)

PERSONNEL

REFERENCE NO. 27 C

SHEET 3 OF 19

NOTES HOMAN DATE 8/4/14
 H.C. LEU WEATHER SUNNY
 R.C. THOMAS TEMP. 75°

ROUTE SR 18
 COUNTY WOOD
 TOWNSHIP HENRY
 SECTION 35

DWG BY MILLER PID 93417

T 3 N R 10 E

TYPE MONUMENT MAG/WASHER

ON SURFACE - ~~BELOW~~ ON

OFFSET 5' LT : RT

- TO - EDGE PAVEMENT

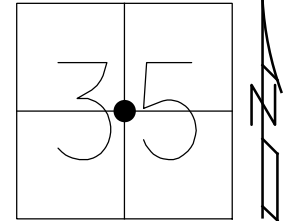
STATION: 658+15.66

HORZ. DATUM: NAD83 (2011)

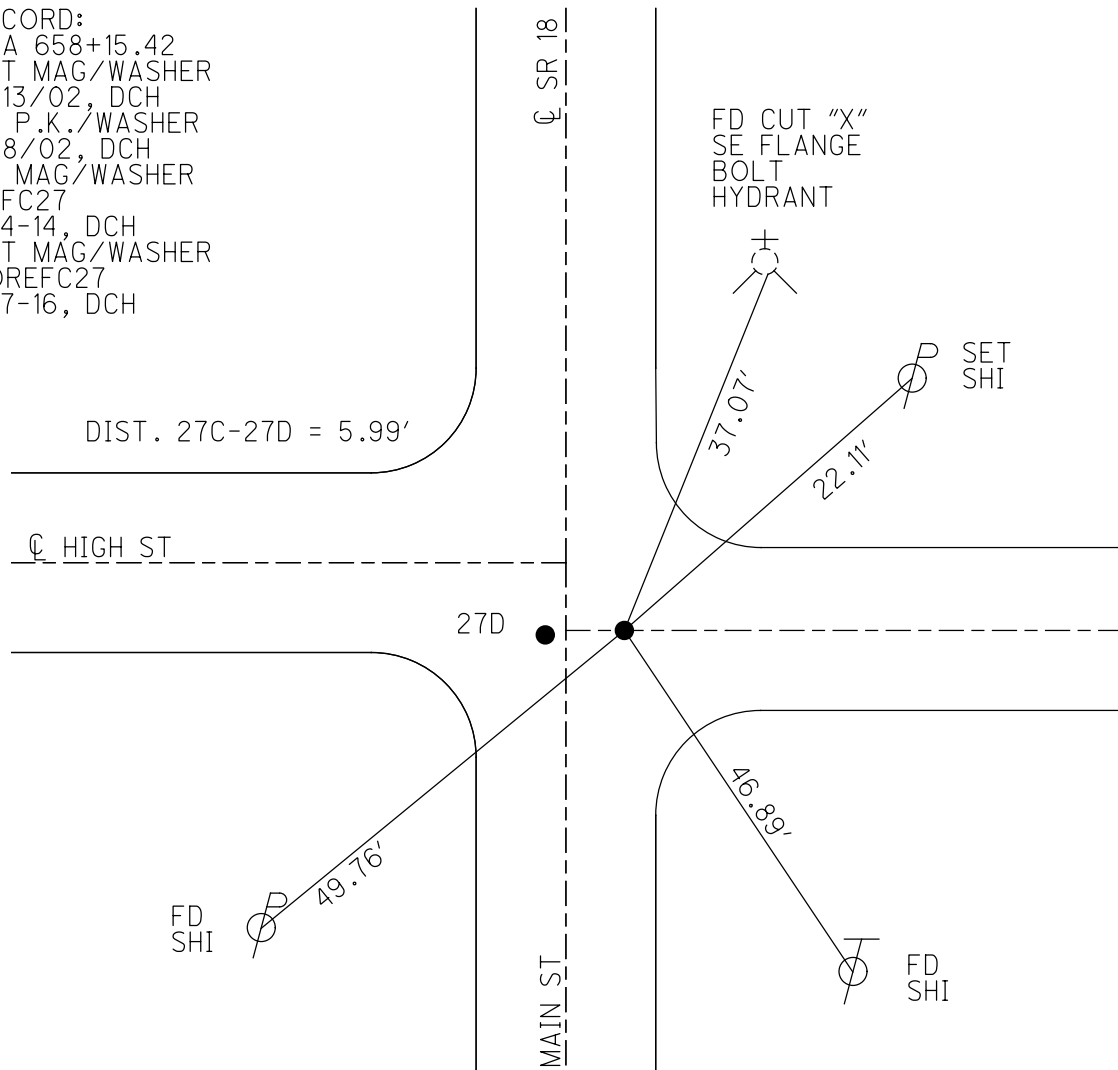
GEOID: 2012A

GRID: NORTHING: 551945.264

EASTING: 1644138.892



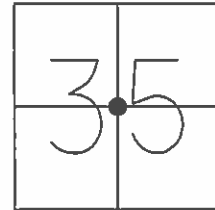
RECORD:
 STA 658+15.42
 SET MAG/WASHER
 2/13/02, DCH
 FD P.K./WASHER
 7/8/02, DCH
 FD MAG/WASHER
 REFC27
 8-4-14, DCH
 SET MAG/WASHER
 COREFC27
 9-7-16, DCH



O.D.O.T. DISTRICT 2 SURVEY OFFICE (USE ONLY)

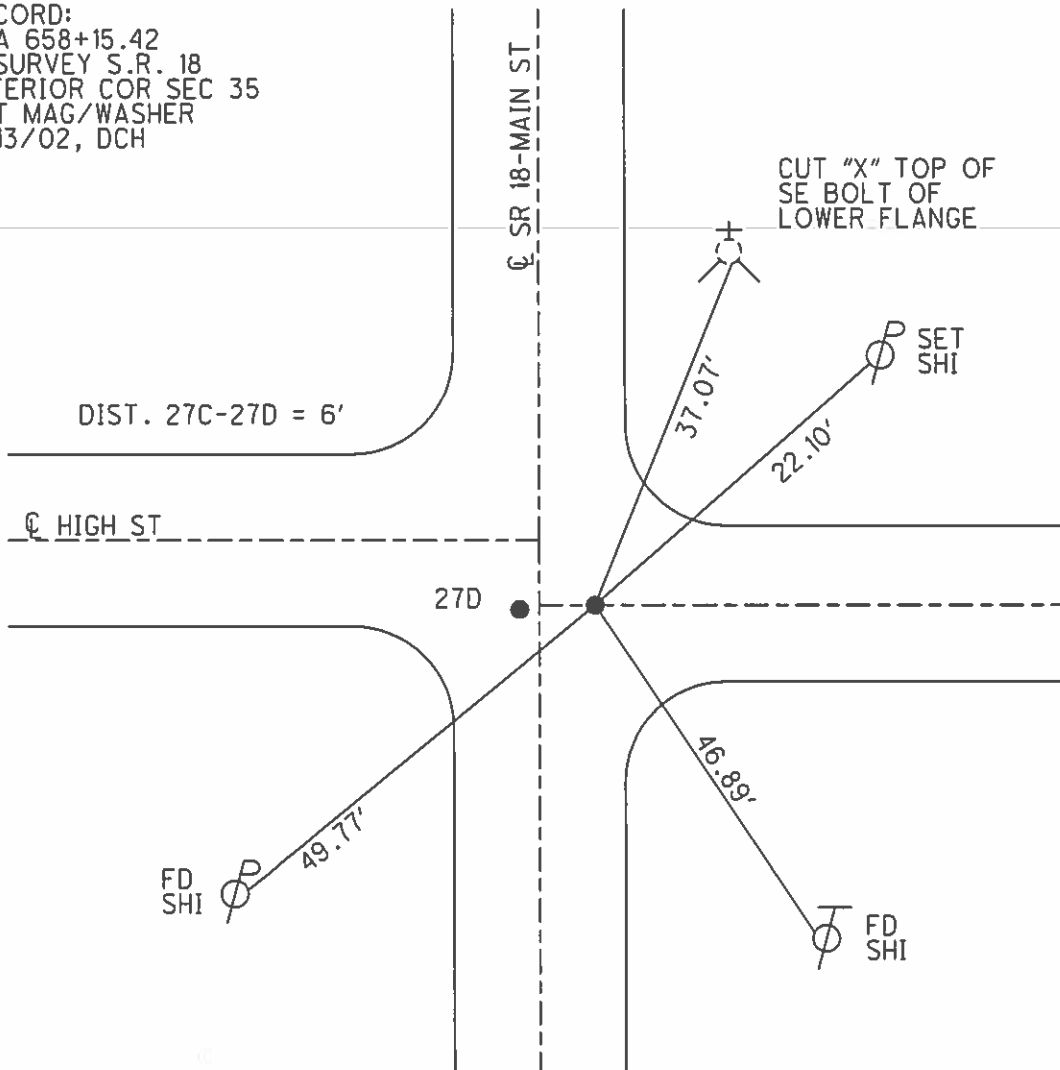
PERSONNEL _____ REFERENCE NO. 27 C SHEET 3 OF 18
 NOTES HOMAN DATE 7/8/02 ROUTE SR 18
 H.C. ZEBROWSKI WEATHER SUNNY COUNTY WOOD
 R.C. MICHALAK TEMP. 75° TOWNSHIP HENRY
BEAUMONT SECTION 35
T 3 N R 10 E

TYPE MONUMENT P.K./WASHER
 ON SURFACE - ~~BELOW~~ ON _____
 LEFT - ☉ PAV'T - ~~RIGHT~~ 5'
 _____ TO _____ EDGE PAVEMENT
 S.L.M. 657+60



Grid: Northing: _____ Easting: _____

RECORD:
 STA 658+15.42
 ☉ SURVEY S.R. 18
 INTERIOR COR SEC 35
 SET MAG/WASHER
 2/13/02, DCH



O.D.O.T. DISTRICT 2 SURVEY OFFICE

PERSONNEL

REFERENCE NO. 27-C

SHEET 17 OF

NOTES Hoffman

H.C. Loehrer

R.C. Baerhisch

Sackman

DATE 6-17-87

WEATHER Clear

TEMP. 85°

ROUTE SR 18

COUNTY Wood

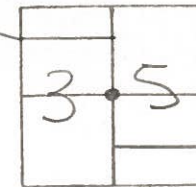
TOWNSHIP Henry

SECTION 35

T. 3 N. R. 10 E

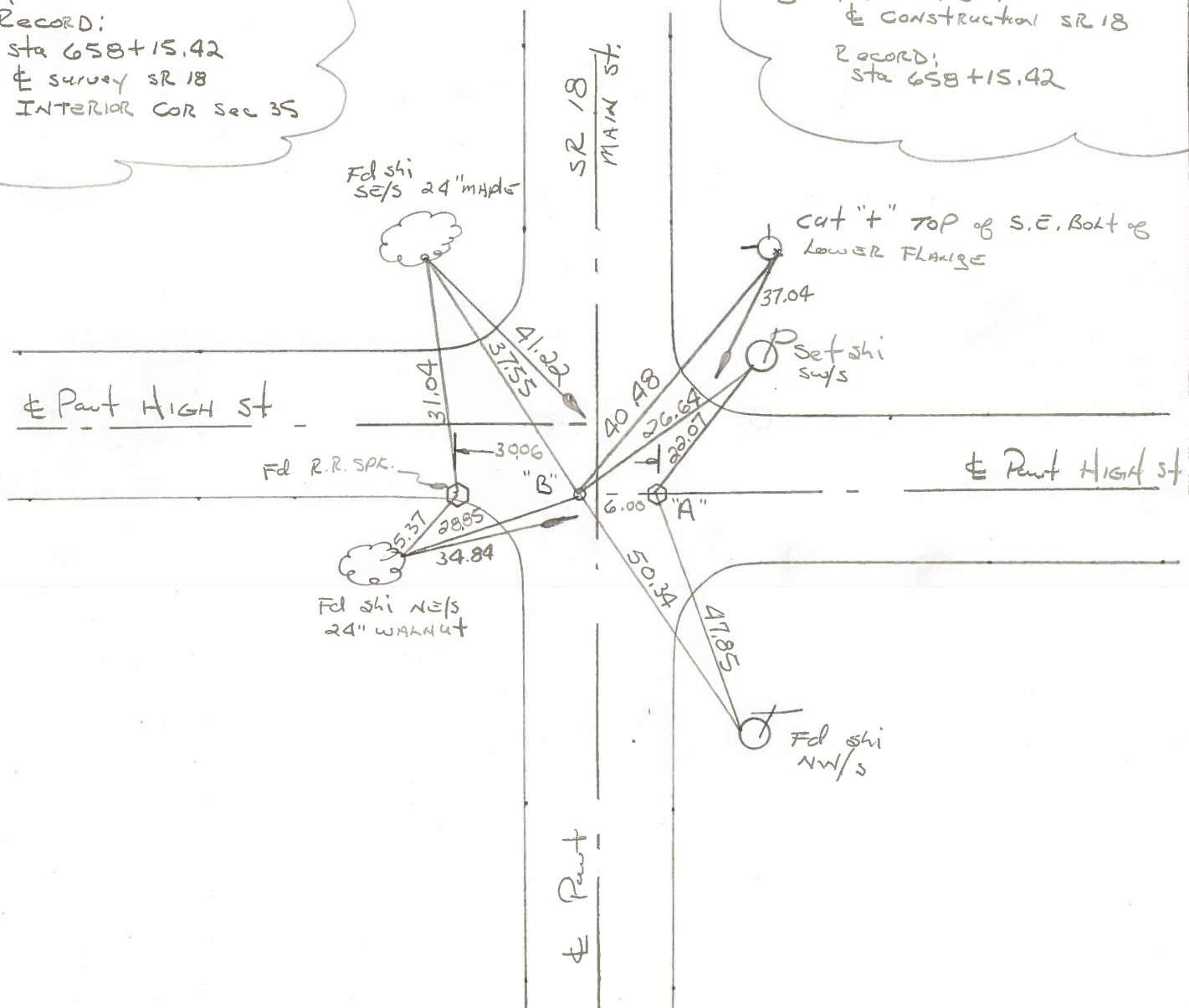
TYPE MONUMENT SMALL RR SPIKE
 ON SURFACE - BELOW YES
 LEFT- & PAV'T. - RIGHT S.O
 TO EDGE PAVEMENT
 S.L.M. 657+60

Set P.K./WASHER
 @ PTS. A & B
 7-27-87
 SWH



"A"
 Record:
 Sta 658+15.42
 & survey SR 18
 INTERIOR COR sec 35

"B"
 Fd P.K. surface
 & construction SR 18
 Record:
 Sta 658+15.42



O.D.O.T. DISTRICT 2 SURVEY OFFICE

Sht. 11 of 22
S.R.18

County WOOD

Date 6-15-78

Township HENRY

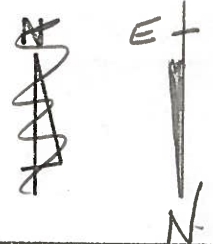
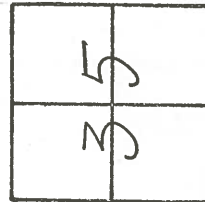
Weather CLEAR

Section N. BALTIMORE

Temp. +72°

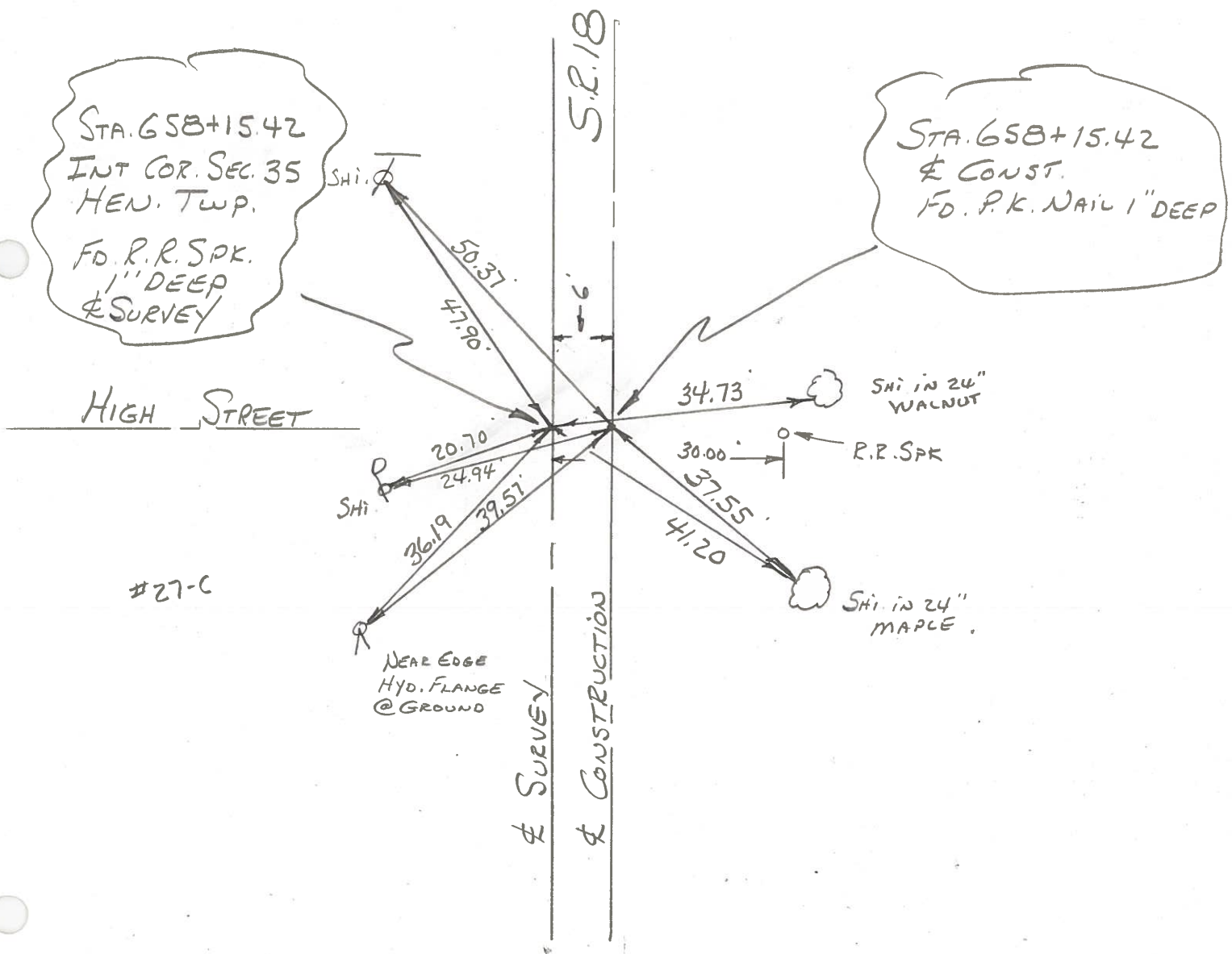
T3N, R10E SEC. 35

Personnel BURNSIDE



SMITH
BOWERS
KNAPE
MEAD

27-C



PERSONNEL BURNSIDE TITLE SMITH PERSONNEL POWERS TITLE HOLCOMBE
 COUNTY WOOD DATE 1-4-76
 S. R. #18 WEATHER CLOUDY
 SEC. _____ TEMP. +20°

DESCRIPTION NORTH BALTIMORE CORP. JOB NO. _____
 LEFT CENTER LINE RIGHT

