

O.D.O.T. DISTRICT 2 SURVEY OFFICE (USE ONLY)

PERSONNEL

REFERENCE NO. 27 D

SHEET 4 OF 19

NOTES HOMAN DATE 8/4/14  
 H.C. LEU WEATHER SUNNY  
 R.C. THOMAS TEMP. 75°

ROUTE SR 18  
 COUNTY WOOD  
 TOWNSHIP HENRY  
 SECTION 35

DWG BY MILLER PID 93417

T 3 N R 10 E

TYPE MONUMENT MAG/WASHER

ON SURFACE - ~~BELOW~~ ON

OFFSET Q PAVEMENT ON LT : RT

- TO - EDGE PAVEMENT

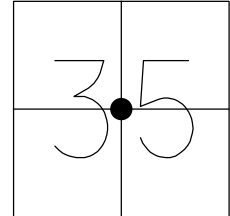
STATION: 658+15.66

HORZ.DATUM: NAD83 (2011)

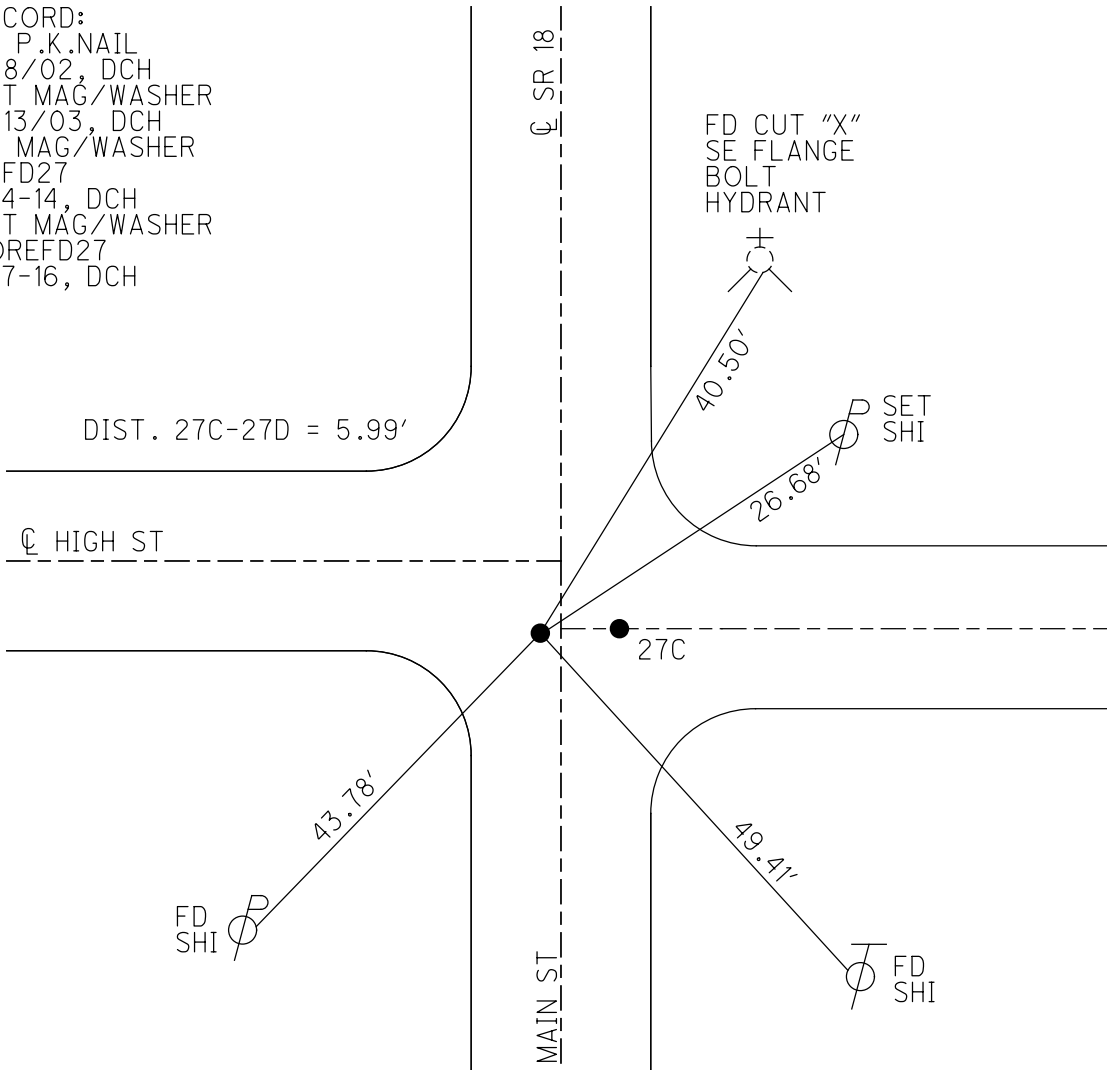
GEOID: 2012A

GRID: NORTHING: 551945.429

EASTING: 1644132.907



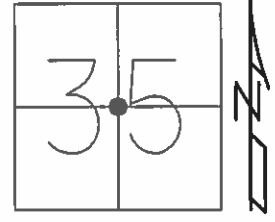
RECORD:  
 FD P.K.NAIL  
 7/8/02, DCH  
 SET MAG/WASHER  
 2/13/03, DCH  
 FD MAG/WASHER  
 REFD27  
 8-4-14, DCH  
 SET MAG/WASHER  
 COREFD27  
 9-7-16, DCH



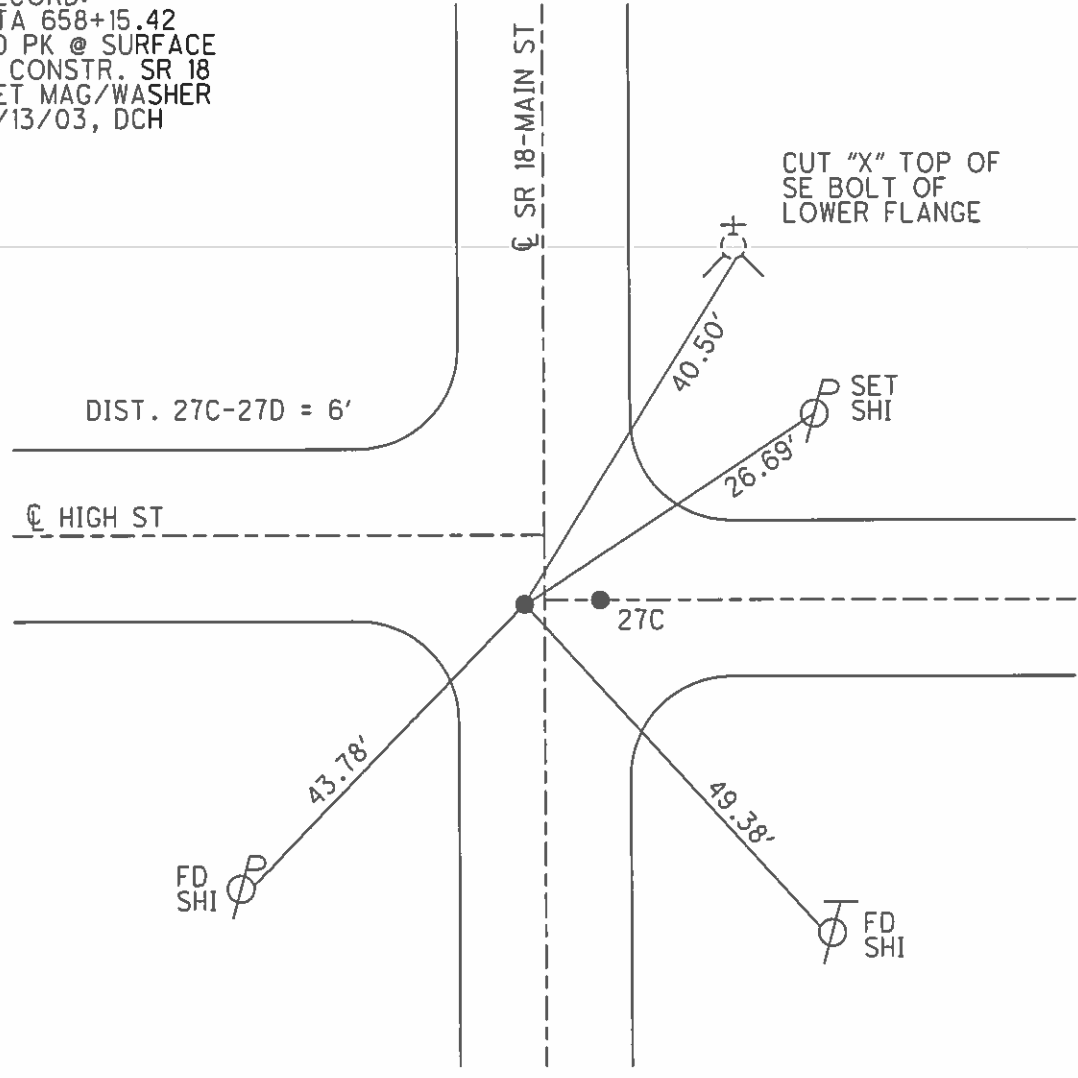
O.D.O.T. DISTRICT 2 SURVEY OFFICE (USE ONLY)

PERSONNEL \_\_\_\_\_ REFERENCE NO. 27 D SHEET 4 OF 18  
 NOTES HOMAN DATE 7/8/02 ROUTE SR 18  
 H.C. ZEBROWSKI WEATHER SUNNY COUNTY WOOD  
 R.C. MICHALAK TEMP. 75° TOWNSHIP HENRY  
BEAUMONT SECTION 35  
 T 3 N R10 E

TYPE MONUMENT P.K./WASHER  
 ON SURFACE - ~~BELOW~~ ON \_\_\_\_\_  
 LEFT - ☉ PAV'T - ~~RIGHT~~ 5'  
 \_\_\_\_\_ TO \_\_\_\_\_ EDGE PAVEMENT  
 S.L.M. 657+60  
 Grid: Northing: \_\_\_\_\_ Easting: \_\_\_\_\_



RECORD:  
 STA 658+15.42  
 FD PK @ SURFACE  
 ☉ CONSTR. SR 18  
 SET MAG/WASHER  
 2/13/03, DCH



# O.D.O.T. DISTRICT 2 SURVEY OFFICE

PERSONNEL

REFERENCE NO. 27-C

SHEET 17 OF       

NOTES Hoffman

H.C. Loehrer

R.C. Baerhisch

Sackman

DATE 6-17-87

WEATHER Clear

TEMP. 85°

ROUTE SR 18

COUNTY Wood

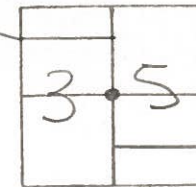
TOWNSHIP Henry

SECTION 35

T. 3 N. R. 10 E.

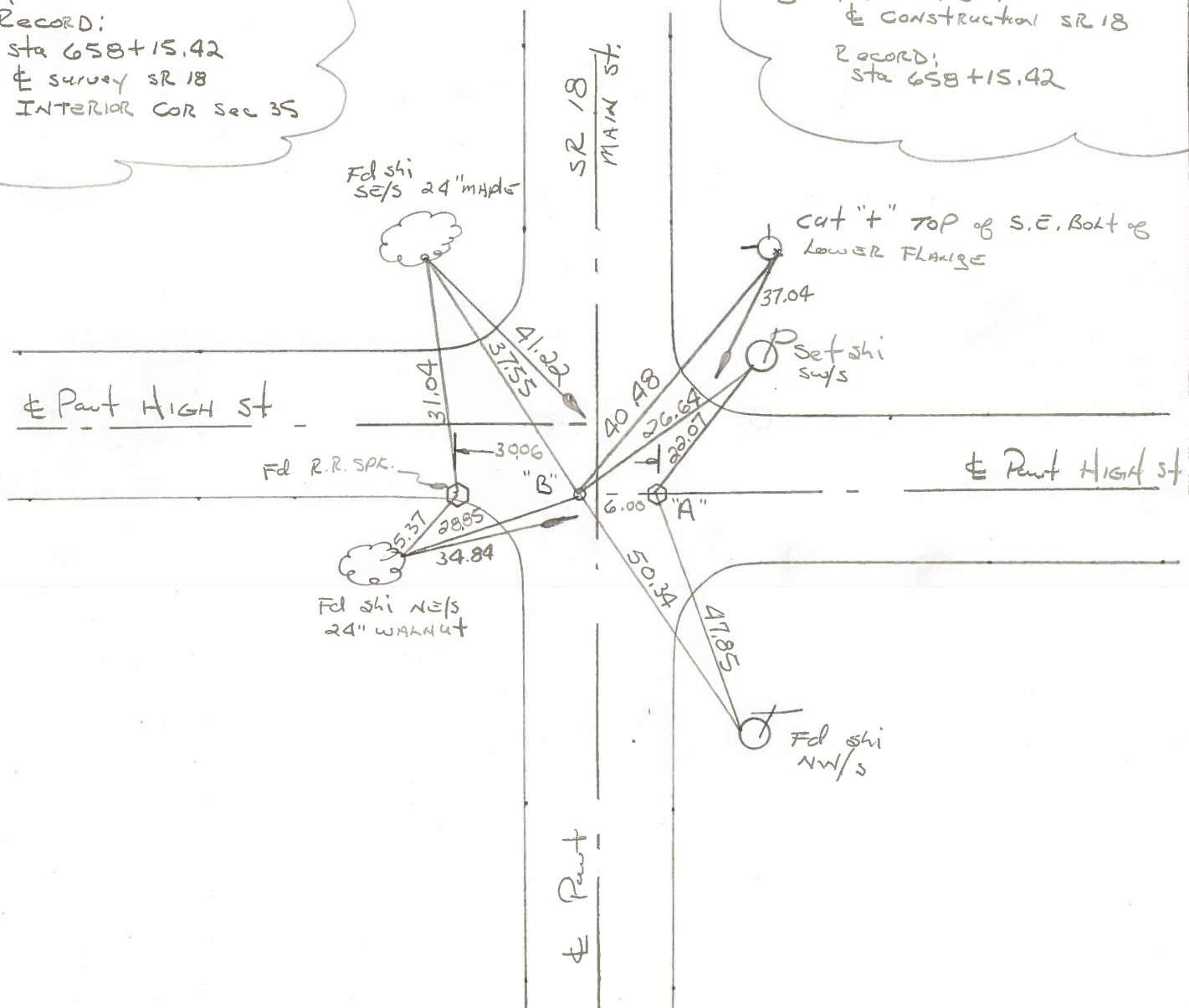
TYPE MONUMENT SMALL RR SPIKE  
 ON SURFACE - BELOW YES  
 LEFT- & PAV'T. - RIGHT S.O  
 TO EDGE PAVEMENT  
 S.L.M. 657+60

Set P.K./WASHER  
 @ PTS. A & B  
 7-27-87  
 SWH



"A"  
 Record:  
 Sta 658+15.42  
 & survey SR 18  
 INTERIOR COR sec 35

"B"  
 Fd P.K. surface  
 & construction SR 18  
 Record:  
 Sta 658+15.42



O.D.O.T. DISTRICT 2 SURVEY OFFICE

Sht. 11 of 22  
S.R.18

County WOOD

Date 6-15-78

Township HENRY

Weather CLEAR

Section N. BALTIMORE

Temp. +72°

T3N, R10E SEC. 35

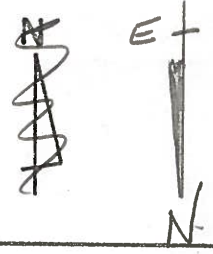
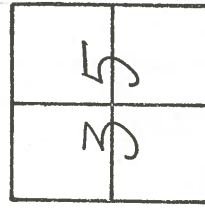
Personnel BURNSIDE

SMITH

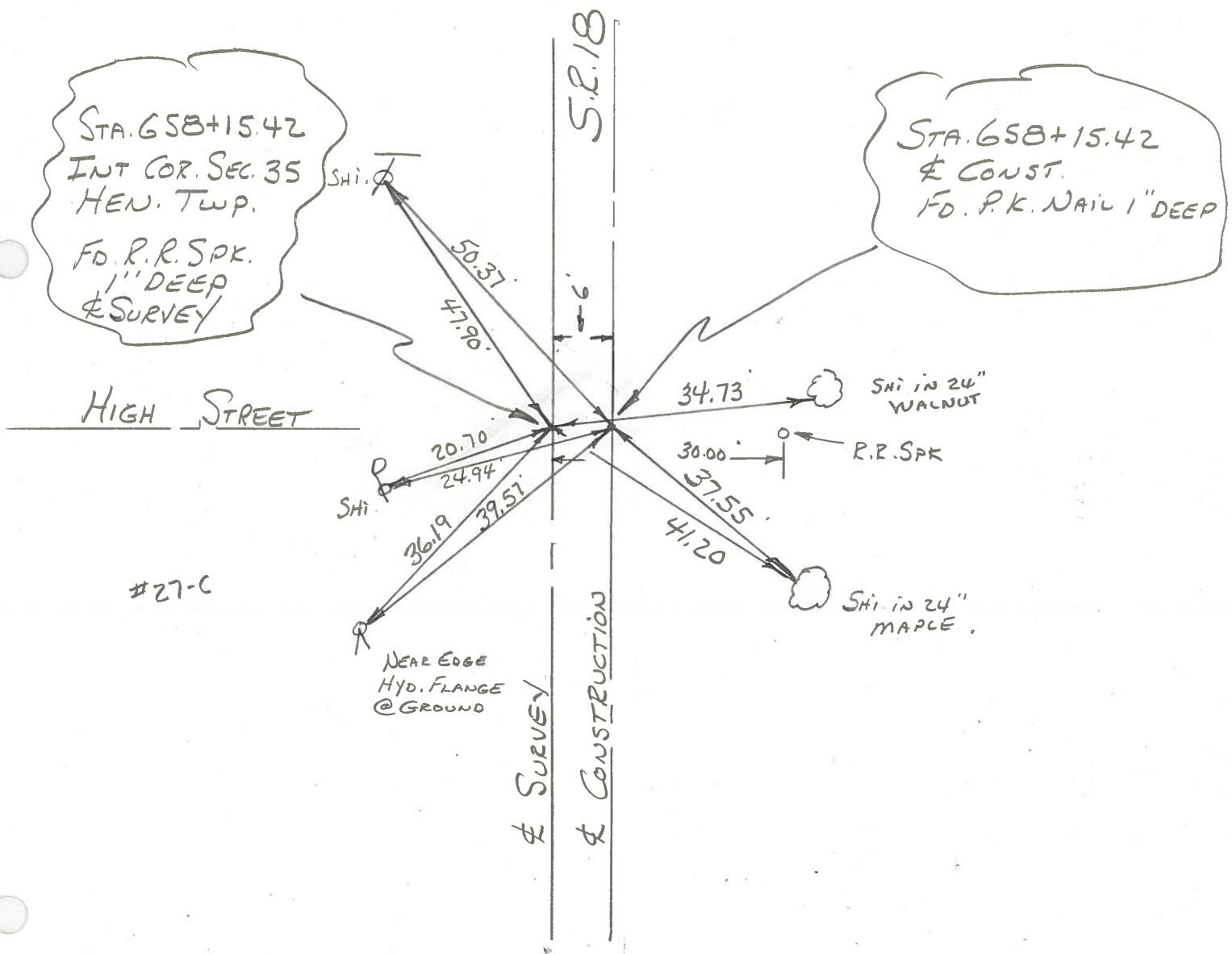
BOWERS

KNAPE

MEAD



27-C



PERSONNEL TITLE PERSONNEL TITLE  
 BURNSIDE \_\_\_\_\_  
 SMITH \_\_\_\_\_  
 FOWERS \_\_\_\_\_  
 HOLCOMBE \_\_\_\_\_

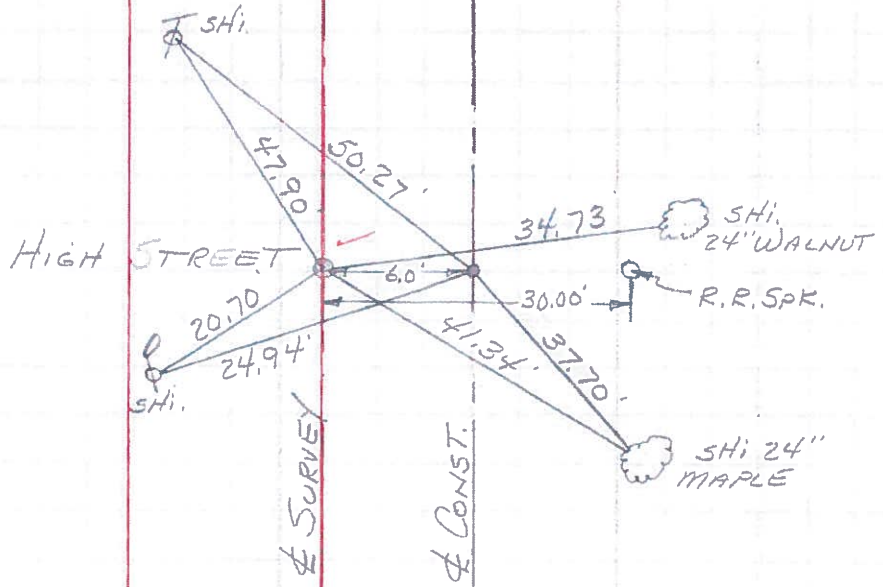
COUNTY WOOD DATE 1-4-76  
 S. R. #18 WEATHER CLOUDY  
 SEC. \_\_\_\_\_ TEMP. +20°

DESCRIPTION NORTH BALTIMORE CORP. JOB NO. \_\_\_\_\_  
 LEFT CENTER LINE RIGHT

STA. 658+15.42  
 R.R. SPK. & SURVEY  
 INT. COR. SEC. 35  
 HENRY TWP.  
 T-3-N-R-10-E

#27-C

STA. 658+15.42  
 P.K. & CONST.



STA. 650+54.44  
 R.R. SPK. & SURVEY  
 SOUTH ST. &  
 S.R. 18

#27-B

