

O.D.O.T. DISTRICT 2 SURVEY OFFICE (USE ONLY)

PERSONNEL \_\_\_\_\_

REFERENCE NO. 28

SHEET 6 OF 19

NOTES LEU

DATE 9/8/16

ROUTE SR 18

H.C. HOMAN

WEATHER CLOUDY

COUNTY WOOD

R.C. LEU

TEMP. 79°

TOWNSHIP HENRY

DWG BY MILLER PID 93417

SECTION 35

T 3 N R 10 E

TYPE MONUMENT MAG/WASHER

ON SURFACE - ~~BELOW~~ ON

OFFSET 15' ~~LT~~ RT

TO EDGE PAVEMENT 3' E CL N BALTIMORE RD

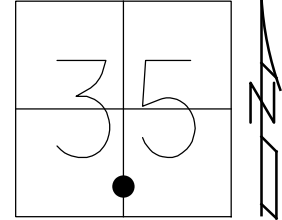
STATION: 667+20.81

HORZ. DATUM: NAD83 (2011)

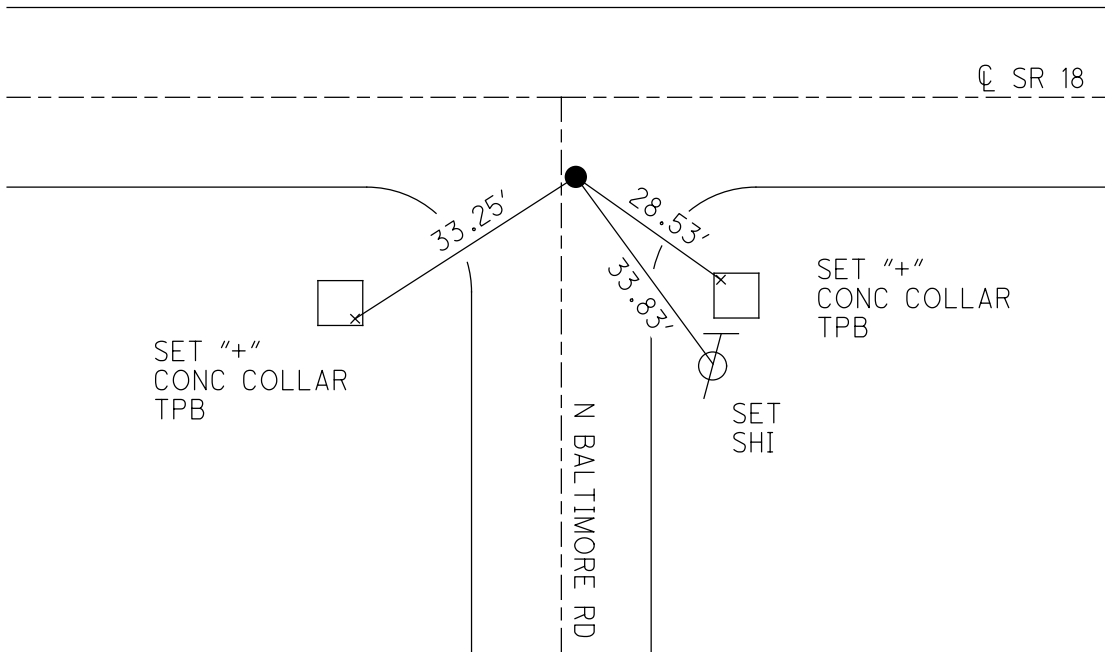
GEOID: 2012A

GRID: NORTHING: 551040.238

EASTING: 1644128.582



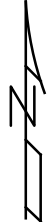
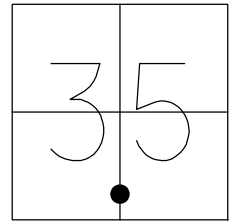
RECORD: P.I.  
 STA 667+39.30  
 $\Delta = 88^{\circ}59'$  LT  
 FD RR SPIKE  
 6-17-87,  
 FD MAG/WASHER  
 NEWREF28  
 9-8-16, DCH



O.D.O.T. DISTRICT 2 SURVEY OFFICE (USE ONLY)

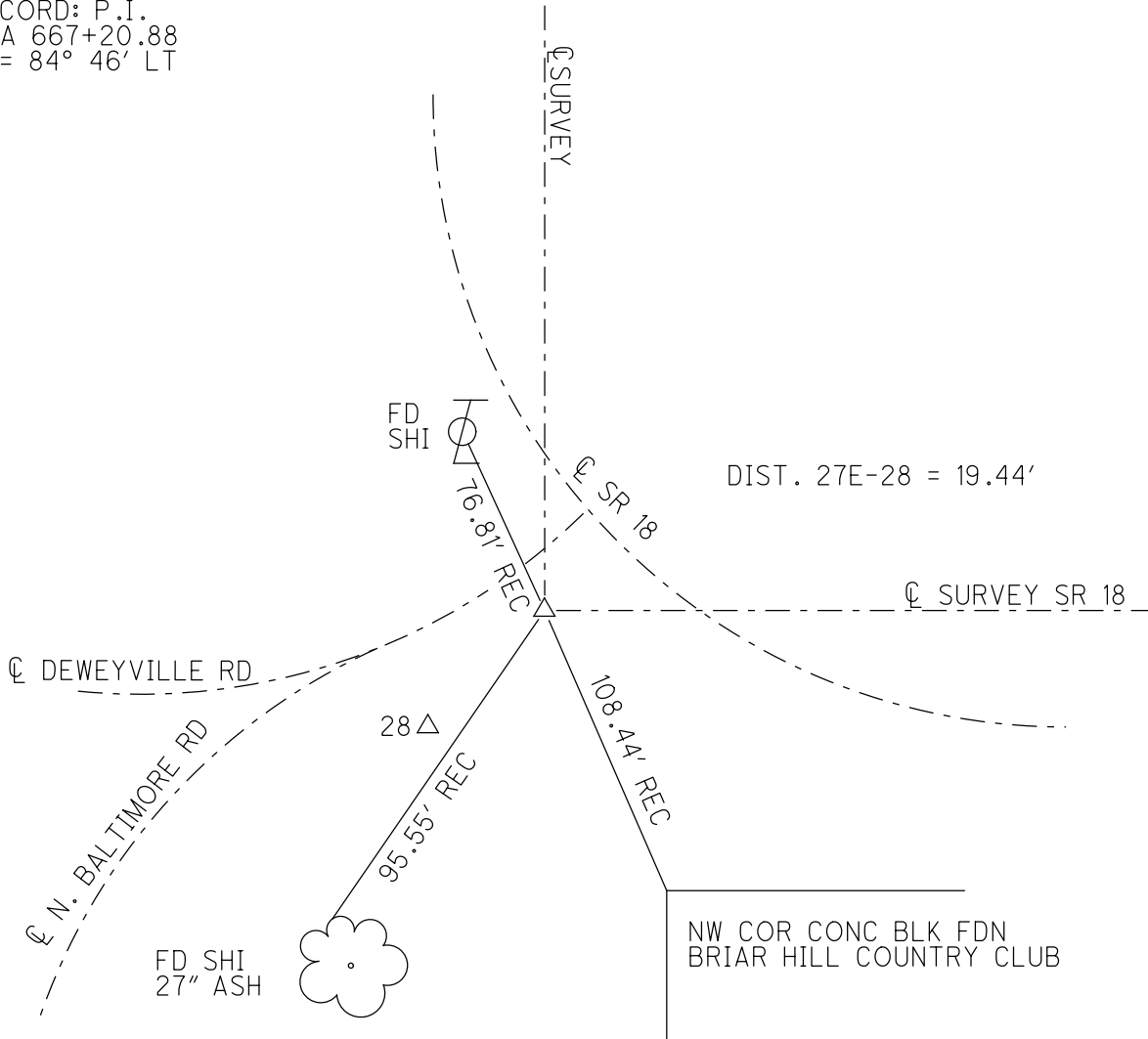
PERSONNEL \_\_\_\_\_ REFERENCE NO. 27 E SHEET 5 OF 19  
 NOTES HOFFMAN DATE 6/17/87 ROUTE SR 18  
 H.C. LOEHREKE WEATHER CLEAR COUNTY WOOD  
 R.C. BARNHISEL TEMP. 85° TOWNSHIP HENRY  
SOCKMAN SECTION 35  
T 3 N R 10 E

TYPE MONUMENT SM.R.R.SPIKE  
 ON SURFACE - ~~BELOW~~ ON \_\_\_\_\_  
~~LEFT~~ - ☉ PAV'T - RIGHT 93'  
 - TO - EDGE PAVEMENT  
 S.L.M. 666+23



Grid: Northing: \_\_\_\_\_ Easting: \_\_\_\_\_

RECORD: P.I.  
 STA 667+20.88  
 $\Delta = 84^\circ 46' \text{ LT}$



# O.D.O.T. DISTRICT 2 SURVEY OFFICE

PERSONNEL

REFERENCE NO. 28

SHEET 18 OF     

NOTES HOFFMAN

H.C. LOEHRKE

R.C. BARNHISEL

Soc/CMAN

DATE 6-17-87

WEATHER CLEAR

TEMP. 85°

ROUTE SR 18

COUNTY WOOD

TOWNSHIP HENRY

SECTION 35

T 3 N R 10 E

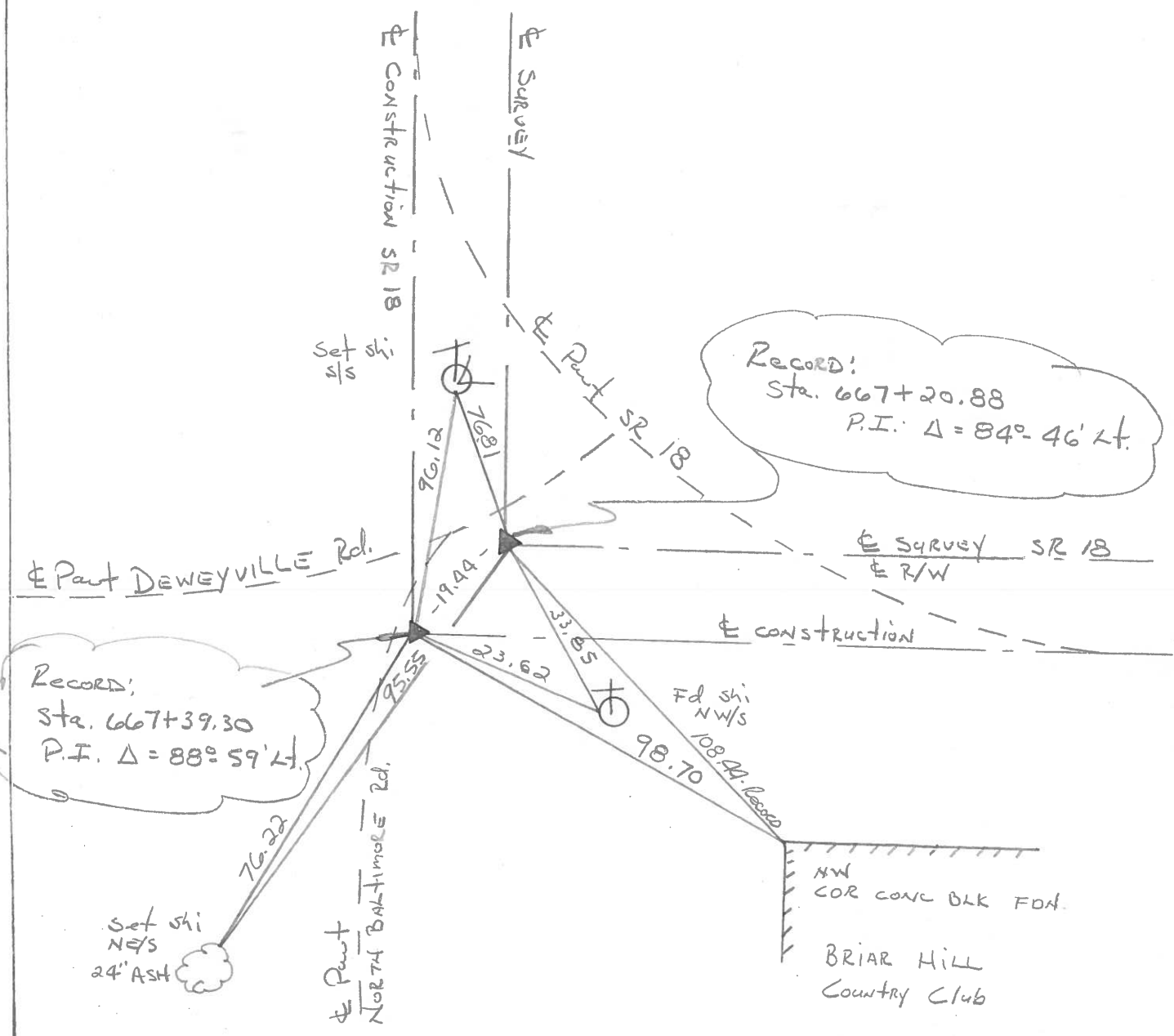
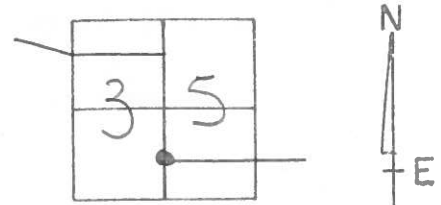
TYPE MONUMENT SMALL RR SPIKE

ON SURFACE -BELOW YES

~~LEFT~~ - PAV'T. - RIGHT 93' of Part SR 18

TO EDGE PAVEMENT

S.L.M. 666 + 23



OD.O.T. DISTRICT 2 SURVEY OFFICE

Sht. 12 of 22  
S.R.18

County WOOD

Date 6-15-78

Township HENRY

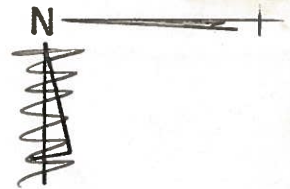
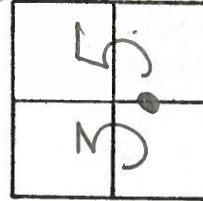
Weather CLEAR

Section 35

Temp. +72°

T N, R E

Personnel BURNSIDE



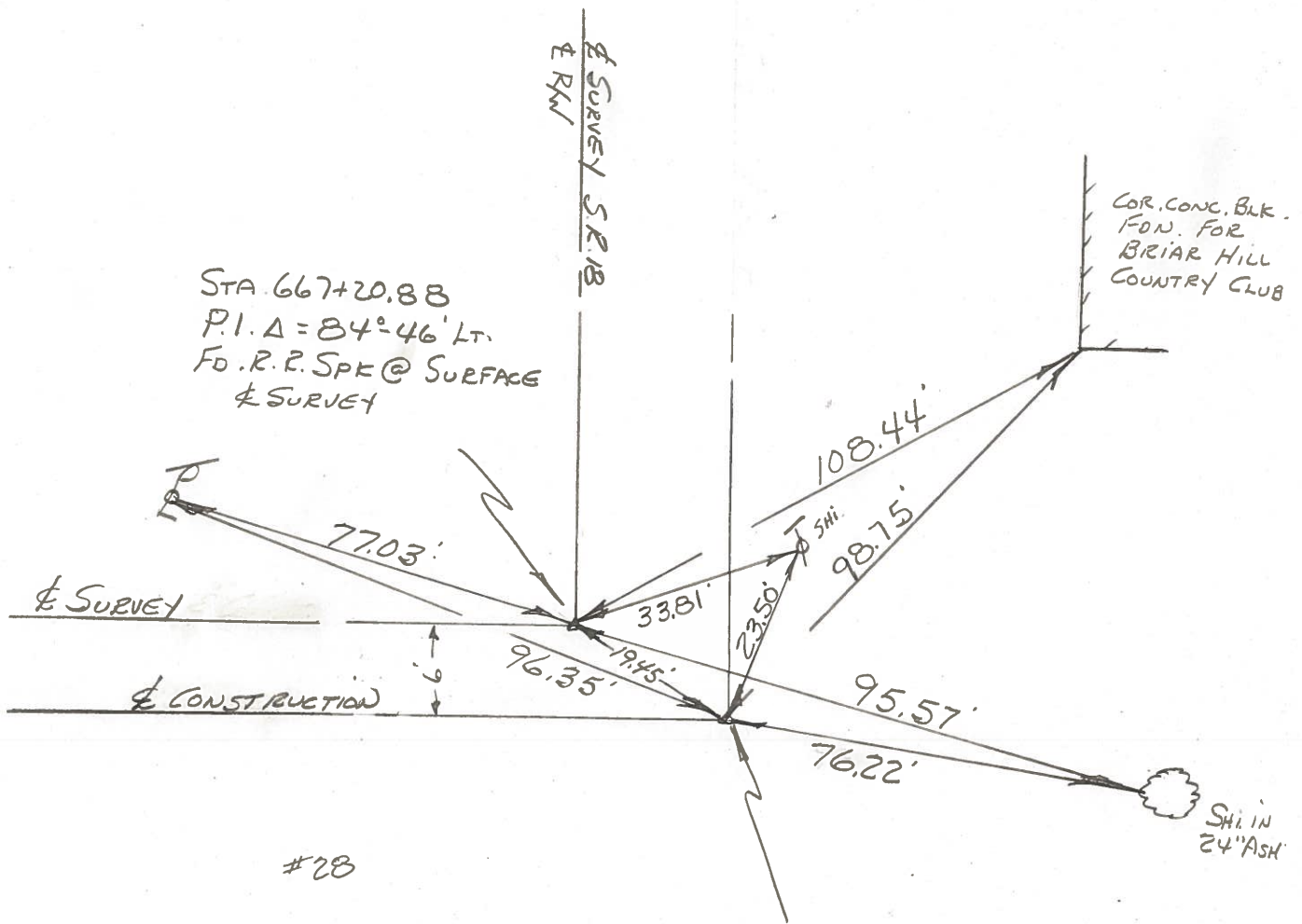
SMITH

BOWERS

KUAPE

MEAD

#28



#28

STA. 667+39.30  
P.I. Δ = 88°-59' LT.  
Fd. R.R. SPK @ SURFACE

PERSONNEL TITLE PERSONNEL TITLE COUNTY WOOD DATE 1-5-71  
BURNSIDE \_\_\_\_\_  
SMITH \_\_\_\_\_ S. R. #18 WEATHER CLEAR  
BOWERS \_\_\_\_\_ SEC. 11.58-12.63 TEMP. +14°  
HOLCOMBE \_\_\_\_\_

DESCRIPTION NORTH BALTIMORE JOB NO. \_\_\_\_\_

