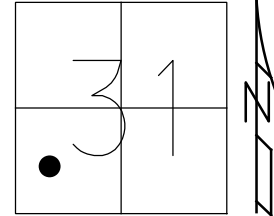


O.D.O.T. DISTRICT 2 SURVEY OFFICE (USE ONLY)

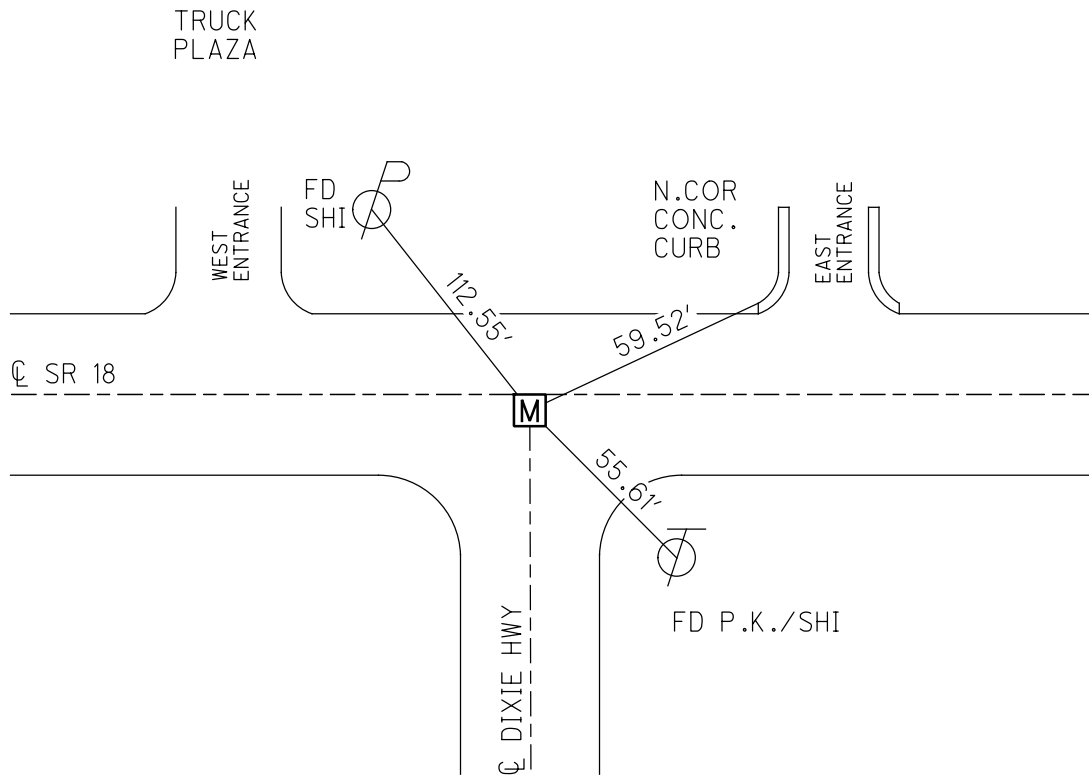
PERSONNEL _____ REFERENCE NO. 32 SHEET 3 OF 35
 NOTES BARNHISEL DATE 9/11/92 ROUTE SR 18
 H.C. VAN DUSEN WEATHER SUNNY COUNTY WOOD
 R.C. KUSZ TEMP. 70° TOWNSHIP BLOOM
 SECTION 31
 DWG BY MILLER PID 93417 T 3 N R 11 E

TYPE MONUMENT SMALL R.R. SPIKE
 ON SURFACE - ~~BELOW~~ ON
 OFFSET ☉ PAVEMENT 3.0' ~~±~~ : RT
15.2' TO RT EDGE PAVEMENT
 STATION: 756+07.60



HORIZ.DATUM: NAD83 (2011) GEOID: 2012A
 GRID: NORTHING: 550729.260 EASTING: 1652992.027

RECORD:
 FD SM R.R. SPIKE
 9/11/92, MB
 FD MONBOX W/IPIN
 REF32
 8/4/14, DCH



O.D.O.T. DISTRICT 2 SURVEY OFFICE

PERSONNEL

REFERENCE NO. _____

SHEET _____ OF _____

NOTES BARNHISEL

H.C. VAN DUSEN

R.C. KUSZ

DATE 9-11-92

WEATHER Sunny

TEMP. +70°

ROUTE 18

COUNTY Wood

TOWNSHIP Bloom

SECTION 31

T 3 N R 11 E

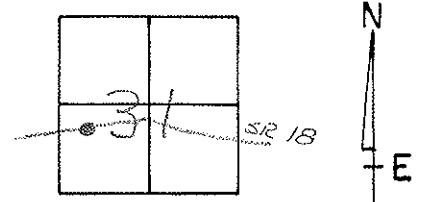
TYPE MONUMENT SM. RR Spk

ON SURFACE - BELOW yes

LEFT - & PAV'T. - RIGHT 3.0

15.2 TO RT EDGE PAVEMENT

S.L.M. 755+36.59



TRUCK
PLAZA

WEST
ENTRANCE

Fd P.K. + Shiner
5E/5

WEST END OF
WEST CURB AT
EAST ENTRANCE
OF TRUCK PLAZA

NORTH
CORNER

& PAV'T

S.R. 18

112.05

59.52

55.19

Fd P.K. + Shiner
N/5

RECORD :

P.I. = 755+36.59

$\Delta = 6^{\circ} - 41' - 45''$

$D = 1^{\circ} - 30' - 00''$

L = 446.39

T = 223.45

R = 3819.72