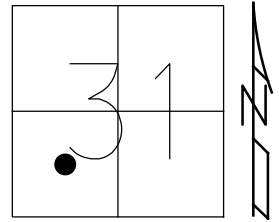


O.D.O.T. DISTRICT 2 SURVEY OFFICE (USE ONLY)

PERSONNEL _____ REFERENCE NO. 33 SHEET 4 OF 35
 NOTES BARNHEISEL DATE 9/11/92 ROUTE SR 18
 H.C. VAN DUSEN WEATHER SUNNY COUNTY WOOD
 R.C. KUSZ TEMP. 70° TOWNSHIP BLOOM
 DWG BY MILLER PID 93417 SECTION 31
 T 3 N R 11 E

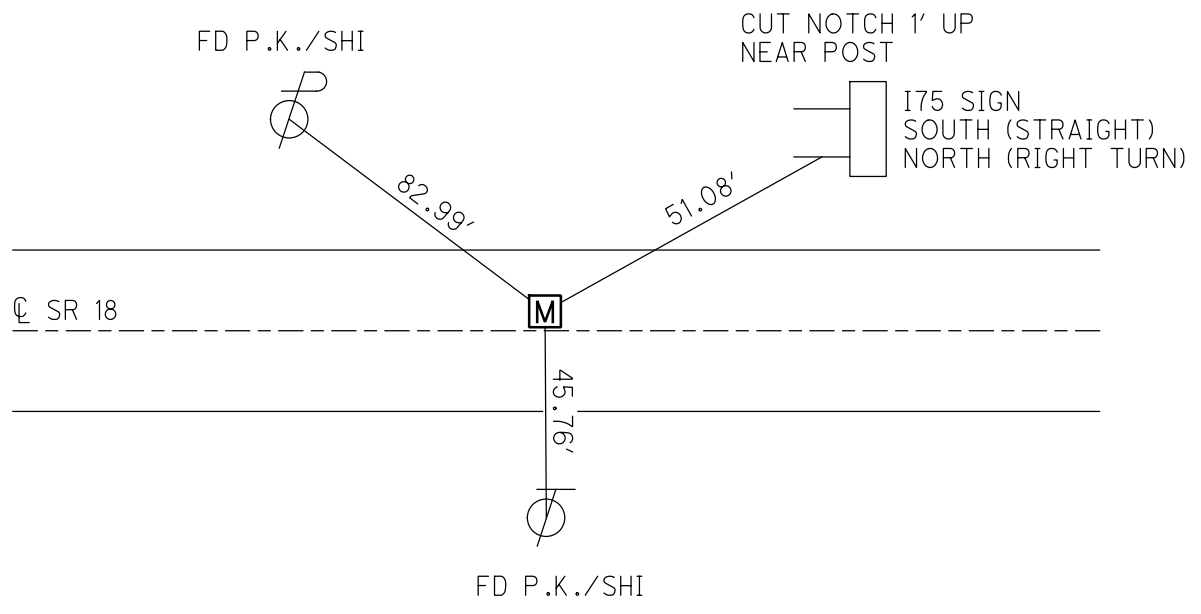
TYPE MONUMENT SM.R.R. SPIKE
 ON SURFACE - ~~BELOW~~ ON
 OFFSET \odot PAVEMENT 2.0' LT : ~~RT~~
16.5' TO RT EDGE PAVEMENT
 STATION: 757+25.14



HORZ.DATUM: NAD83 (2011) GEOID: 2012A
 GRID: NORTHING: 550737.026 EASTING: 1653109.306

RECORD: P.T.
 STA 757+59.53
 FD SM R.R. SPIKE
 9/11/92
 SHOT IPIN IN MONBOX
 REF33
 8/4/14, DCH

NOTE: P.I.
 CURVE DATA
 STA = 755+36.59
 $\Delta = 6^{\circ}41'45''$
 $D = 1^{\circ}30'00''$
 $L = 446.39'$
 $T = 223.45'$
 $R = 3819.72'$



O.D.O.T. DISTRICT 2 SURVEY OFFICE

PERSONNEL _____

REFERENCE NO. _____

SHEET _____ OF _____

NOTES BARNHISEL

H.C. VAN DUSEN

R.C. KUSZ

DATE 9-11-92

WEATHER SUNNY

TEMP. +70°

ROUTE 18

COUNTY WOOD

TOWNSHIP Bloom

SECTION 31

T 3 N R 11 E

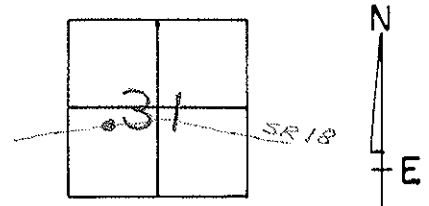
TYPE MONUMENT Sm. RR SPK

ON SURFACE - BELOW yes

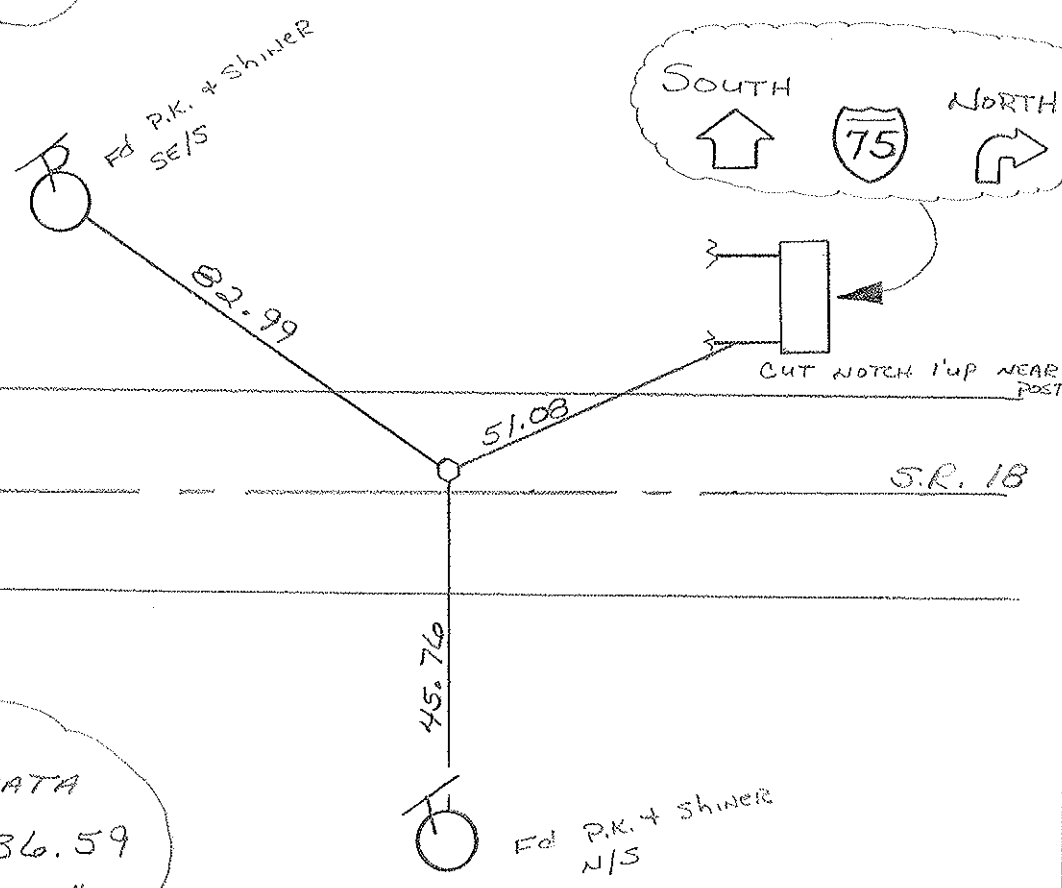
LEFT- C PAV'T. - RIGHT 2.0

16.5 TO RT EDGE PAVEMENT

S.L.M. 757+59.53



RECORD
P.T. = 757+59.53



CURVE DATA
 P.I. = 755+36.59
 $\Delta = 6^{\circ}-41'-45''$
 $D = 1^{\circ}-30'-00''$
 $L = 446.39$
 $T = 223.45$
 $R = 3819.72$