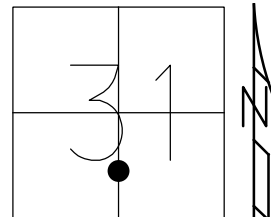


O.D.O.T. DISTRICT 2 SURVEY OFFICE (USE ONLY)

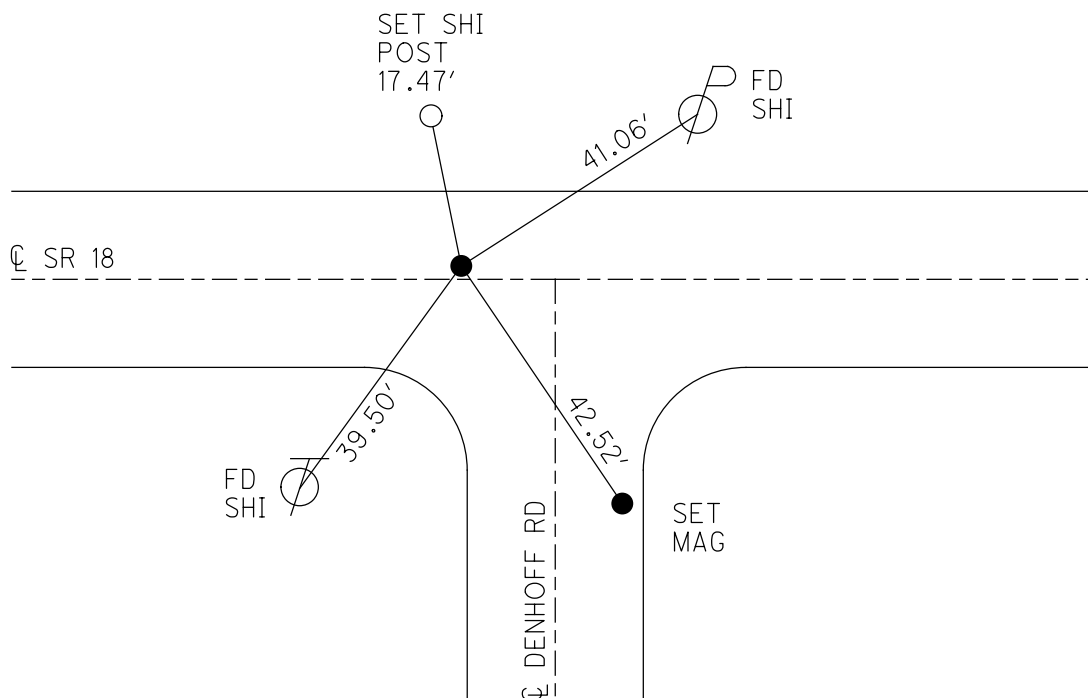
PERSONNEL _____ REFERENCE NO. 33 B SHEET 6 OF 35
 NOTES HOMAN DATE 8/25/14 ROUTE SR 18
 H.C. LEU WEATHER SUNNY COUNTY WOOD
 R.C. RHOADES TEMP. 75° TOWNSHIP BLOOM
 DWG BY MILLER PID 93417 SECTION 31
 T 3 N R 11 E

TYPE MONUMENT P.K.NAIL
 ON SURFACE - ~~BELOW~~ ON
 OFFSET C PAVEMENT 0.5' LT : ~~RT~~
9.4' TO LT EDGE PAVEMENT 7.6' W OF C SOUTH
 STATION: 770+81.24



HORZ.DATUM: NAD83 (2011) GEOID: 2012A
 GRID: NORTHING: 550831.650 EASTING: 1654461.941

RECORD:
 FD LG R.R SPIKE
 6/9/99, MB
 SET P.K./WASHER
 7/20/99, MB
 FD P.K./WASHER
 REFB33
 8/25/14, DCH
 SET MAG/WASHER
 11/05/14, DCH



RESURFACED 1999

O.D.O.T. DISTRICT 2 SURVEY OFFICE

PERSONNEL

REFERENCE NO. 31

SHEET OF

NOTES HOFFMAN

H.C. LOEHRKE

DATE 9-30-88

ROUTE SR 18

R.C. BARNHISEL

WEATHER CLEAR

COUNTY WOOD

TEMP. 74°

TOWNSHIP R100M

SECTION 31

T. 3 N. R. 11 E

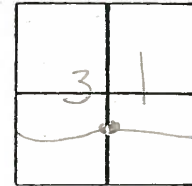
TYPE MONUMENT R.R. SPIKES

ON SURFACE - BELOW 3"

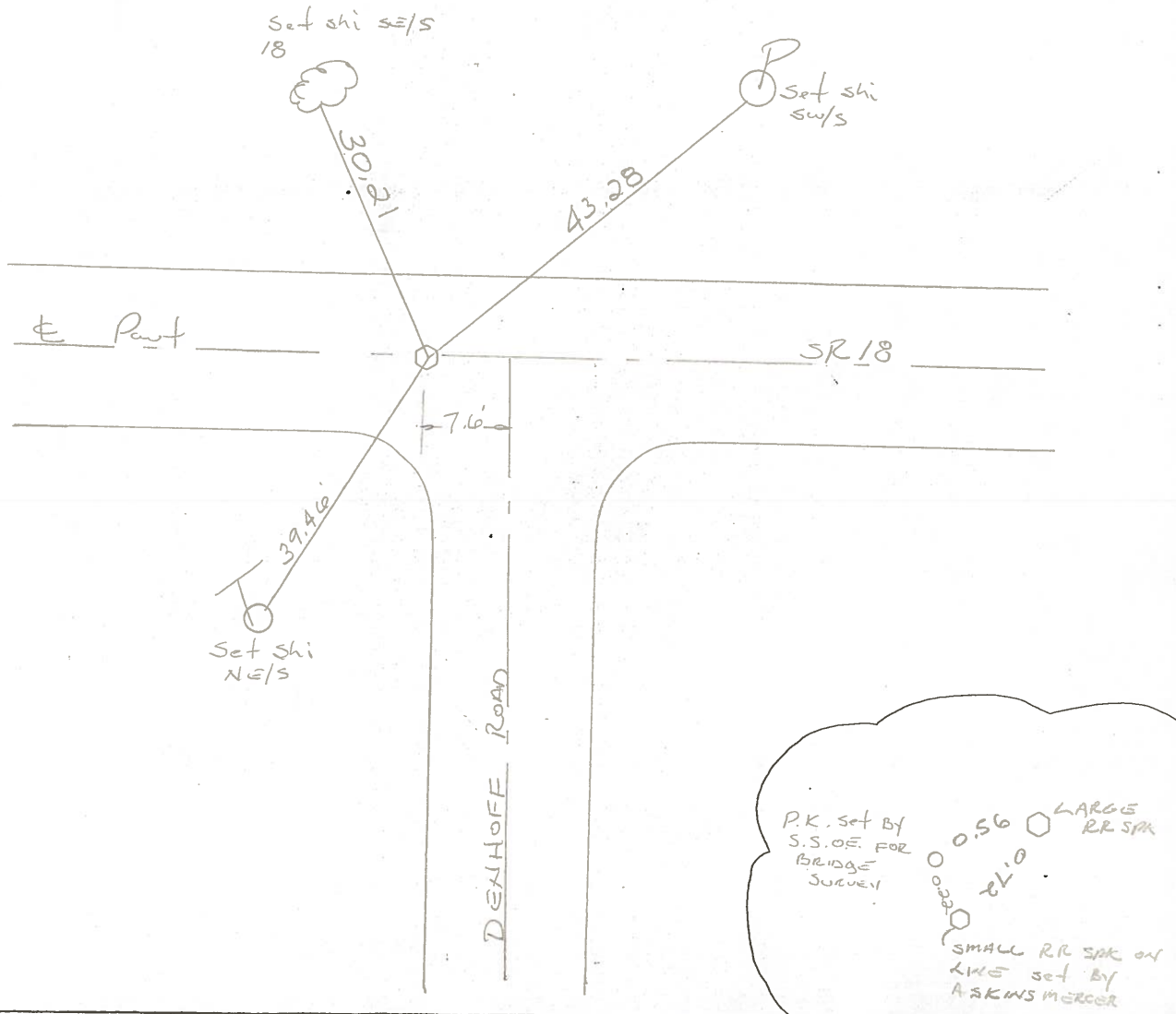
LEFT- & PAV'T. - RIGHT YES

9.2 TO LT. EDGE PAVEMENT

S.L.M.



POINT FOUND FROM OLD SURVEY



O.D.O.T. DISTRICT 2 SURVEY OFFICE

PERSONNEL _____ REFERENCE NO. _____ SHEET 1 OF 29

NOTES BARNHISEL RC

H.C. Rousos DATE 6-9-99 ROUTE 18

R.C. _____ WEATHER SUNNY COUNTY Wood

_____ TEMP. +80° TOWNSHIP Bloom

_____ SECTION 31

_____ T3 NR 11 E

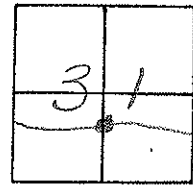
TYPE MONUMENT Lg. RR. Spk.

ON SURFACE - BELOW 3"

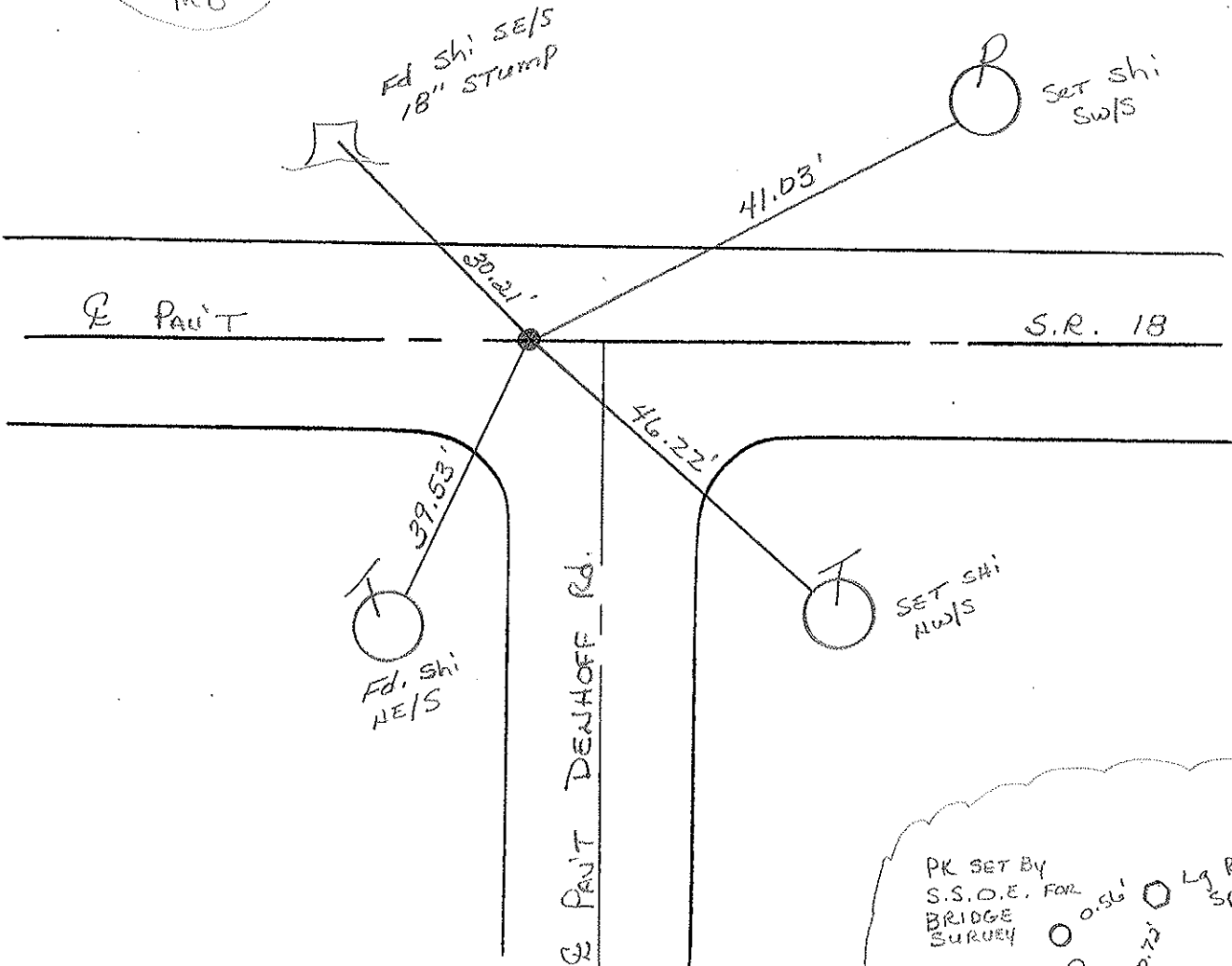
LEFT - & PAV'T. - RIGHT yes

9.4' TO LT EDGE PAVEMENT

S.L.M. 771+18 7.6' W. OF E SOUTH



Reset PK/WARNER
w/ 20-99
MB



PK SET BY
S.S.O.E. FOR
BRIDGE
SURVEY

0.56' Lg RR. Spk

0.22' 0.22' Sm. RR Spk
by ASKINS

PERSONNEL	TITLE	PERSONNEL	TITLE
Hoffman	IA		
Lowmiller	X		
Spencer	DATA		

COUNTY Woods DATE 7-30-81
 S. R. 18 WEATHER Clear
 SEC. 17th N.M. TEMP. 74th

DESCRIPTION At US Highway 170119 Old County Road's Road JOB NO. _____

