

O.D.O.T. DISTRICT 2 SURVEY OFFICE (USE ONLY)

PERSONNEL _____ REFERENCE NO. 33 C SHEET 7 OF 35
 NOTES HOMAN DATE 8/25/14 ROUTE SR 18
 H.C. LEU WEATHER SUNNY COUNTY WOOD
 R.C. RHOADES TEMP. 80° TOWNSHIP BLOOM
 SECTION 31
 DWG BY MILLER PID 93417 T 3 N R 11 E

TYPE MONUMENT P.K.NAIL

ON SURFACE - ~~BELOW~~ ON

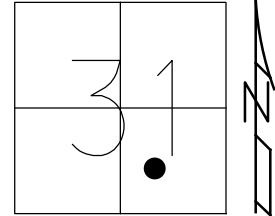
OFFSET 0.8' LT : ~~RT~~

8.6' TO LT EDGE PAVEMENT

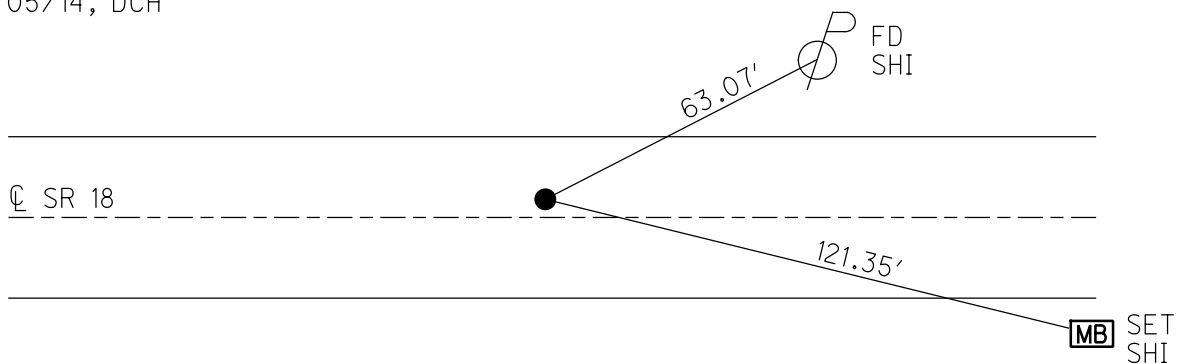
STATION: 773+31.18

HORZ.DATUM: NAD83 (2011) GEOID: 2012A

GRID: NORTHING: 550811.870 EASTING: 1654711.098



RECORD:
 FD FR/OLD SURVEY
 OBSERVED
 $\Delta=05^{\circ}52'38''$
 7-30-88
 FD SM R.R SPIKE
 6/9/99, MB
 SET P.K./WASHER
 7/20/99, MB
 FD P.K.NAIL
 REFC33
 8/25/14, DCH
 SET MAG/WASHER
 11/05/14, DCH



O.D.O.T. DISTRICT 2 SURVEY OFFICE

PERSONNEL _____

REFERENCE NO. _____

SHEET 2 OF 29

NOTES Barnhisel (RC)

H.C. Routes DRMON

DATE 6-9-99

ROUTE 18

R.C. _____

WEATHER hot

COUNTY Wood

TEMP. 85°F

TOWNSHIP Bloom

SECTION 31

T 3 N R 11 E

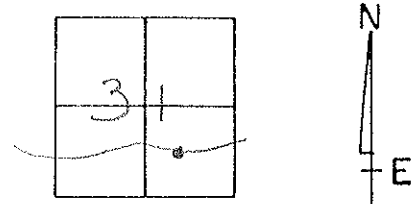
TYPE MONUMENT Small RR spike (BENT)

ON SURFACE - BELOW 3"

LEFT- ϕ PAW'T. - RIGHT 0.8

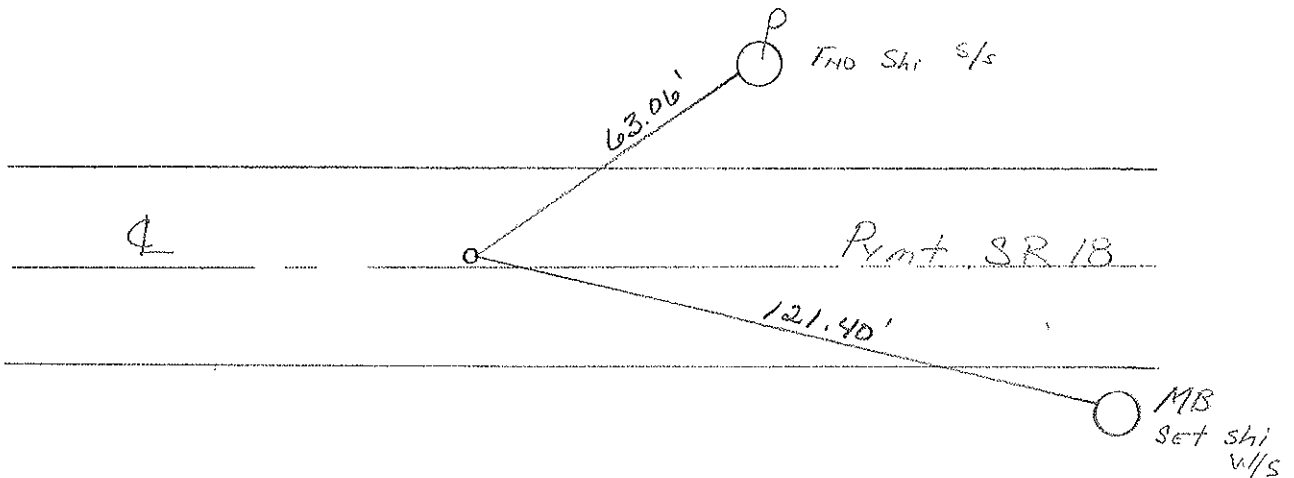
8.6 TO LT EDGE PAVEMENT

S.L.M. 773+71



Point Found From old survey
Observed $\Delta = 05^{\circ} 52' 38''$ 7-30-88

Reset PK/WASHER
7-20-99
MB



P.L. set by
S.S.O.E.
For Bridge
SURVEY

0.30' ϕ sm. RR spk.
0.75' ϕ
0.38' ϕ PK. set by
ASKILL MERCER

O.D.O.T. DISTRICT 2 SURVEY OFFICE

PERSONNEL

REFERENCE NO. 31A

SHEET OF

NOTES HOFFMAN

H.C. LOEHRICE

R.C. BARNHISEL

DATE 9-30-88

WEATHER CLEAR

TEMP. 74°

ROUTE SR 18

COUNTY WOOD

TOWNSHIP Bloom

SECTION 31

T. 3 N. R. 11 E

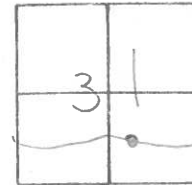
TYPE MONUMENT SMALL SPIKE (BEAT)

ON SURFACE - BELOW 3"

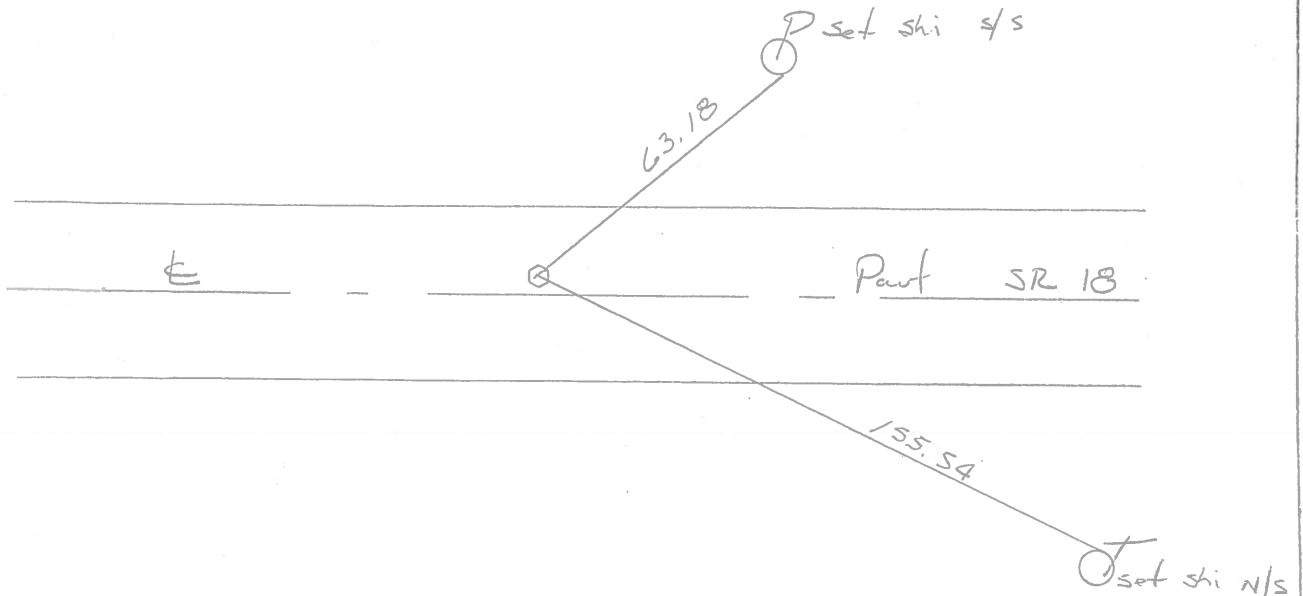
LEFT - 0 PAV'T. - RIGHT 0.8

8.5 TO LT EDGE PAVEMENT

S.L.M.



Point found from old survey
OBSERVED $\Delta = 05^{\circ} 52' - 38''$ RT.



P.K. set by
S.S.O.E.
FOR BRIDGE
SURVEY

0.30
0.54
0.80

SMALL SPIKE

P.K. set by ASKINS MERCER