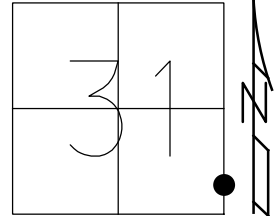


O.D.O.T. DISTRICT 2 SURVEY OFFICE (USE ONLY)

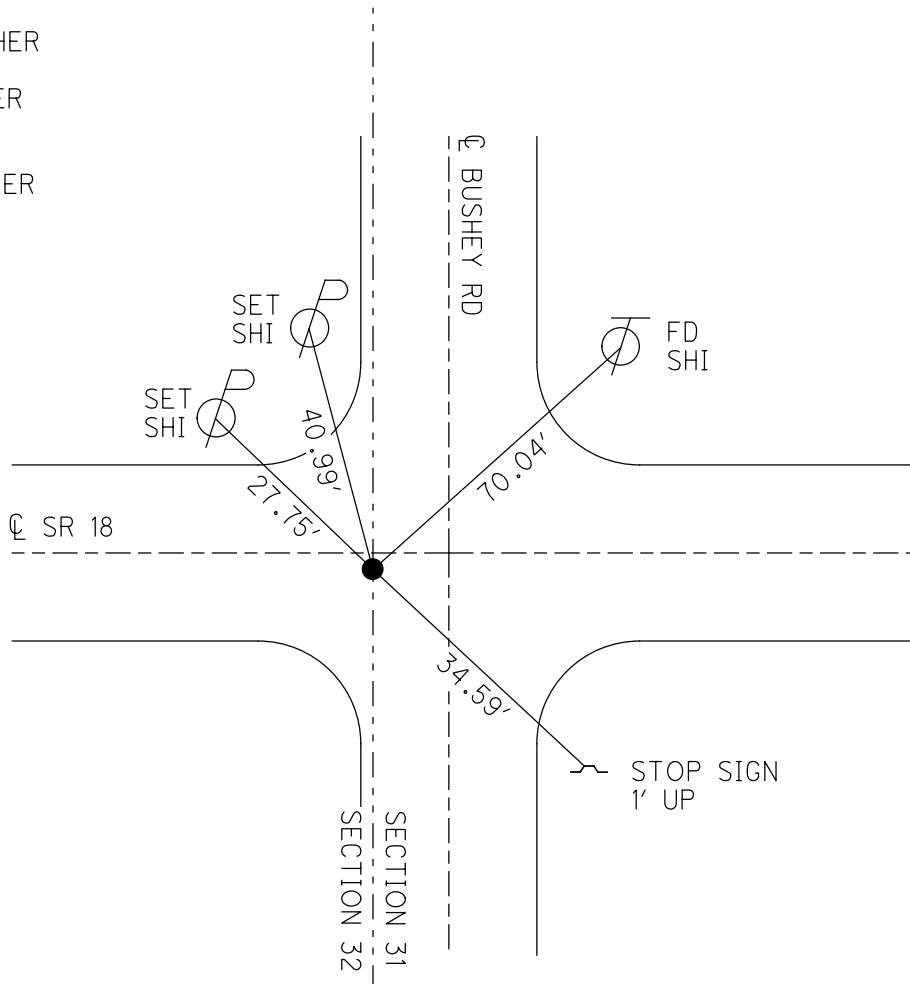
PERSONNEL _____ REFERENCE NO. 33 G SHEET 11 OF 35
 NOTES HOMAN DATE 8/25/14 ROUTE SR 18
 H.C. LEU WEATHER SUNNY COUNTY WOOD
 R.C. RHOADES TEMP. 80° TOWNSHIP BLOOM
 DWG BY MILLER PID 93417 SECTION 31
 T 3 N R 11 E

TYPE MONUMENT P.K.
 ON SURFACE - ~~BELOW~~ ON
 OFFSET C PAVEMENT 0.2' ~~LT~~ : RT
TO EDGE PAVEMENT 5.2' FROM C OF BUSHEY RD.
 STATION: 797+65.27



HORZ. DATUM: NAD83 (2011) GEOID: 2012A
 GRID: NORTHING: 550359.150 EASTING: 1657098.142

RECORD:
 FD P.K. SHANK
 6/16/99, MB
 SET P.K./WASHER
 7/20/99, MB
 FD P.K./WASHER
 REFG33
 8/25/14, DCH
 SET MAG/WASHER
 11/05/14, DCH



O.D.O.T. DISTRICT 2 SURVEY OFFICE

PERSONNEL _____

REFERENCE NO. _____

SHEET 6 OF 29

NOTES BARNHISEL

H.C. CANTERBURY

R.C. Rousos III

DATE 6-16-99

WEATHER CLOUDY

TEMP. +65°

ROUTE SR18

COUNTY WOOD

TOWNSHIP Bloom

SECTION 31-32

T3 N R 11 E

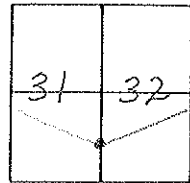
TYPE MONUMENT P.K. SHANK

ON SURFACE - BELOW 1" BELOW

LEFT - & PAV'T. - RIGHT 0.2' RT

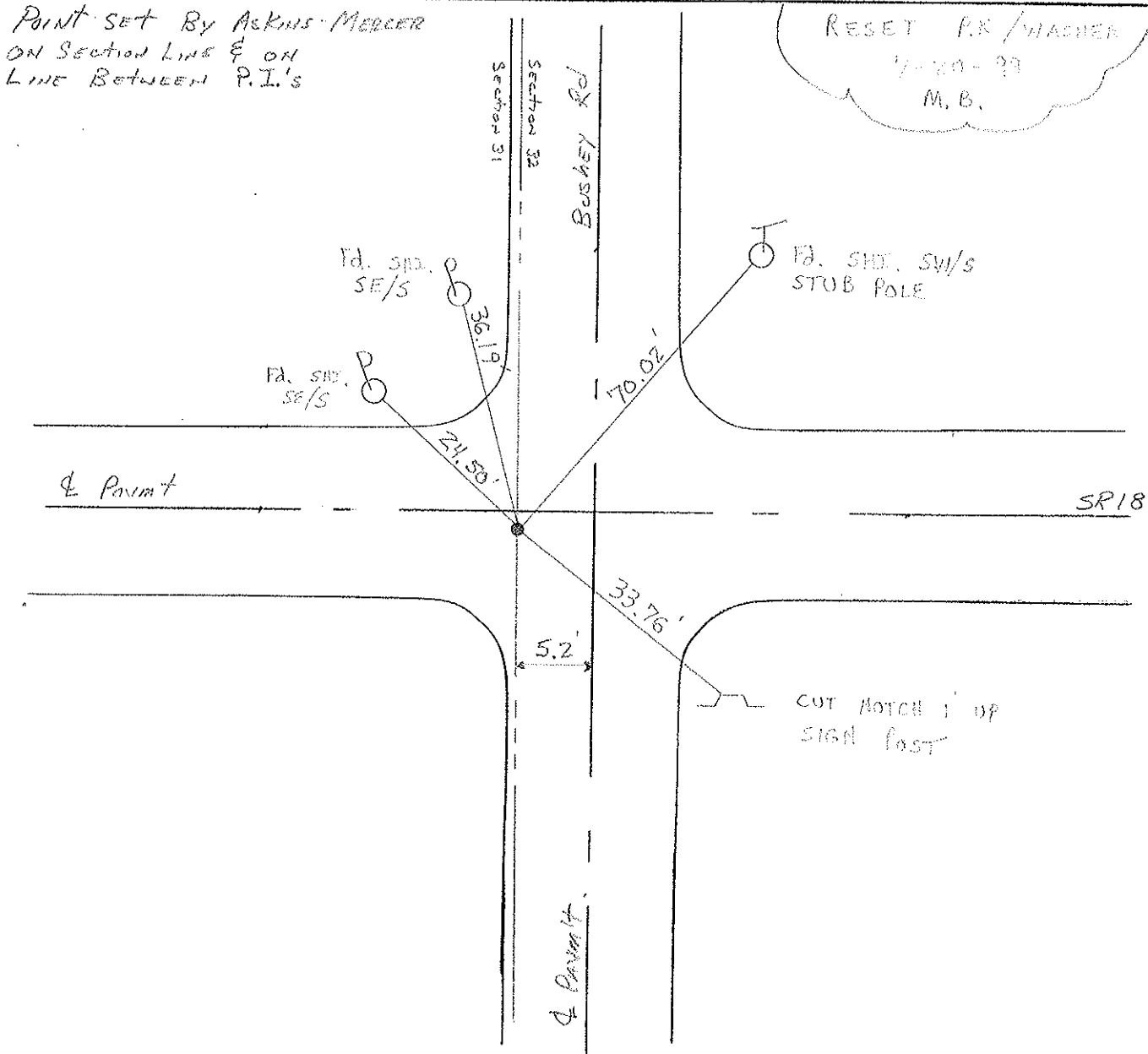
— TO — EDGE PAVEMENT

S.L.M. 798 + 06



Point set by ASKINS-MERCER
ON SECTION LINE & ON
LINE BETWEEN P.I.'s

RESET P.K. / MACHEN
7-20-99
M.B.



O.D.O.T. DISTRICT 2 SURVEY OFFICE

PERSONNEL _____

REFERENCE NO. 33

SHEET _____ OF _____

NOTES HOFFMAN

H.C. LOEHRKE

DATE 9-30-88

ROUTE SR 18

R.C. BARNHISEL

WEATHER CLEAR

COUNTY WOOD

TEMP. 74°

TOWNSHIP Bloom

SECTION 31-32

T. 3 N. R. 11 E.

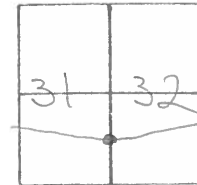
TYPE MONUMENT P.K. Nail

ON SURFACE - BELOW YES

LEFT - E. PAV'T. - RIGHT 0.2

TO EDGE PAVEMENT

S.L.M. _____



POINT SET BY ASKINS-MERCER
ON SECTION LINE & ON
LINE BETWEEN P.I.'S

