

O.D.O.T. DISTRICT 2 SURVEY OFFICE (USE ONLY)

PERSONNEL

REFERENCE NO. 33 H

SHEET 12 OF 29

NOTES HOMAN

DATE 8/25/14

ROUTE SR 18

H.C. LEU

WEATHER SUNNY

COUNTY WOOD

R.C. RHOADES

TEMP. 80°

TOWNSHIP BLOOM

DWG BY MILLER PID 93417

SECTION 32

T 3 N R 11 E

TYPE MONUMENT P.K./WASHER

ON SURFACE - ~~BELOW~~ ON

OFFSET Q PAVEMENT 2.0' ~~LT~~ : RT

7.4' TO RT EDGE PAVEMENT

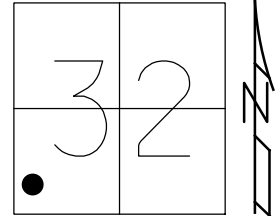
STATION: 802+38.34

HORZ.DATUM: NAD83 (2011)

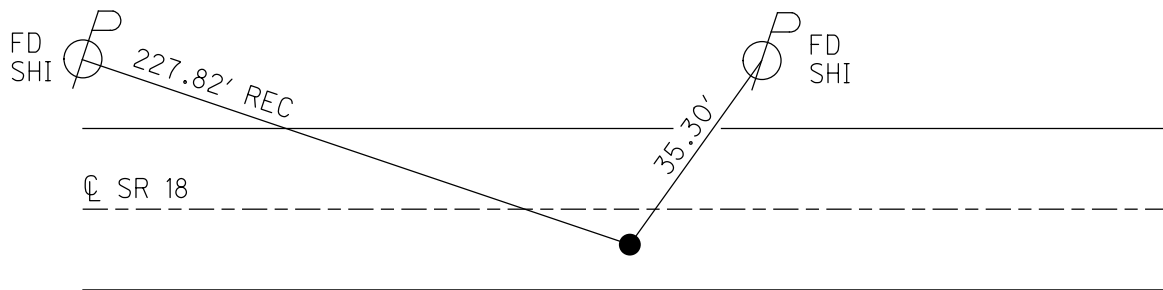
GEOID: 2012A

GRID: NORTHING: 550367.957

EASTING: 1657571.137



RECORD: P.I.
FD P.K./WASHER
6/16/99, MB
SET P.K./WASHER
7/20/99, MB
FD P.K./WASHER
REFH33
8/25/14, DCH
SET MAG/WASHER
11/05/14, DCH



O.D.O.T. DISTRICT 2 SURVEY OFFICE

PERSONNEL _____

REFERENCE NO. _____

SHEET 7 OF 29

NOTES Revised

H.C. Canterbury

DATE 6-16-99

ROUTE SR 18

R.C. Russos III

WEATHER Cloudy

COUNTY Wood

TEMP. +65°

TOWNSHIP Bloom

SECTION 32

T3 N R 11 E

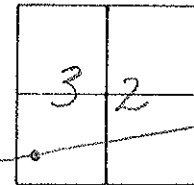
TYPE MONUMENT PK Washer

ON SURFACE - BELOW Yes

LEFT- & PAV'T. - RIGHT 2.0'

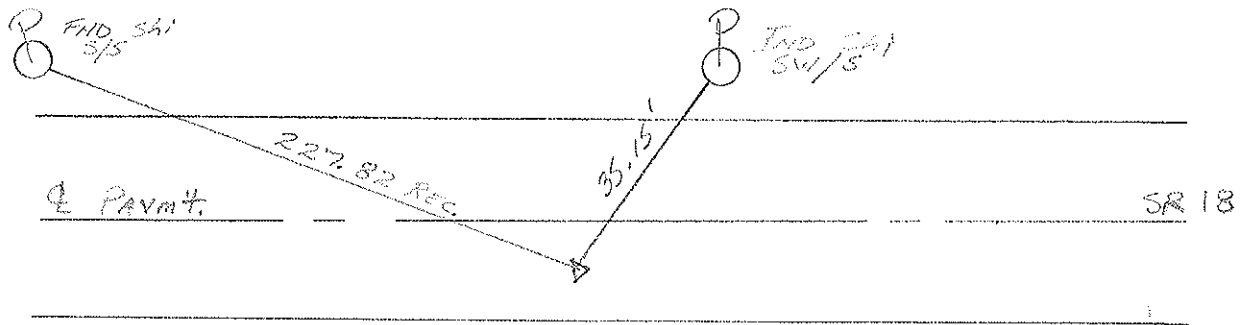
7.4 TORT EDGE PAVEMENT

S.L.M. 802481



Point set for P.I.

RESET
 PK WASH/11
 7-20-99
 MB



O.D.O.T. DISTRICT 2 SURVEY OFFICE

PERSONNEL _____

REFERENCE NO. 33A

SHEET _____ OF _____

NOTES HOFFMAN

H.C. LOEHRKE

R.C. BARNHISEL

DATE 9-26-88

WEATHER CLEAR

TEMP. 72°

ROUTE SR 18

COUNTY WOOD

TOWNSHIP Bloom

SECTION 32

T3 NR 11 E

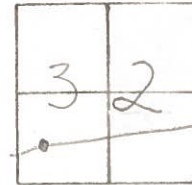
TYPE MONUMENT P.K. / WASHER

ON SURFACE - BELOW YES

~~LEFT-C~~ PAV'T. - RIGHT 2.0'

7.4 TO RT. EDGE PAVEMENT

S.L.M. _____



Point set for P.I.

