

O.D.O.T. DISTRICT 2 SURVEY OFFICE (USE ONLY)

PERSONNEL

REFERENCE NO. 34 C

SHEET 16 OF 35

NOTES HOMAN DATE 8/25/14
 H.C. LEU WEATHER SUNNY
 R.C. RHOADES TEMP. 85°

ROUTE SR 18
 COUNTY WOOD
 TOWNSHIP BLOOM
 SECTION 33

DWG BY MILLER PID 93417

T 3 N R 11 E

TYPE MONUMENT P.K./WASHER

ON SURFACE - ~~BELOW~~ ON

OFFSET ☉ PAVEMENT ON ~~LT:RT~~

- TO - EDGE PAVEMENT

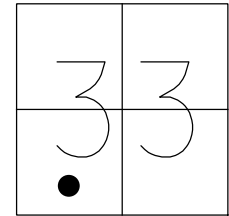
STATION: 862+91.31

HORIZ.DATUM: NAD83 (2011)

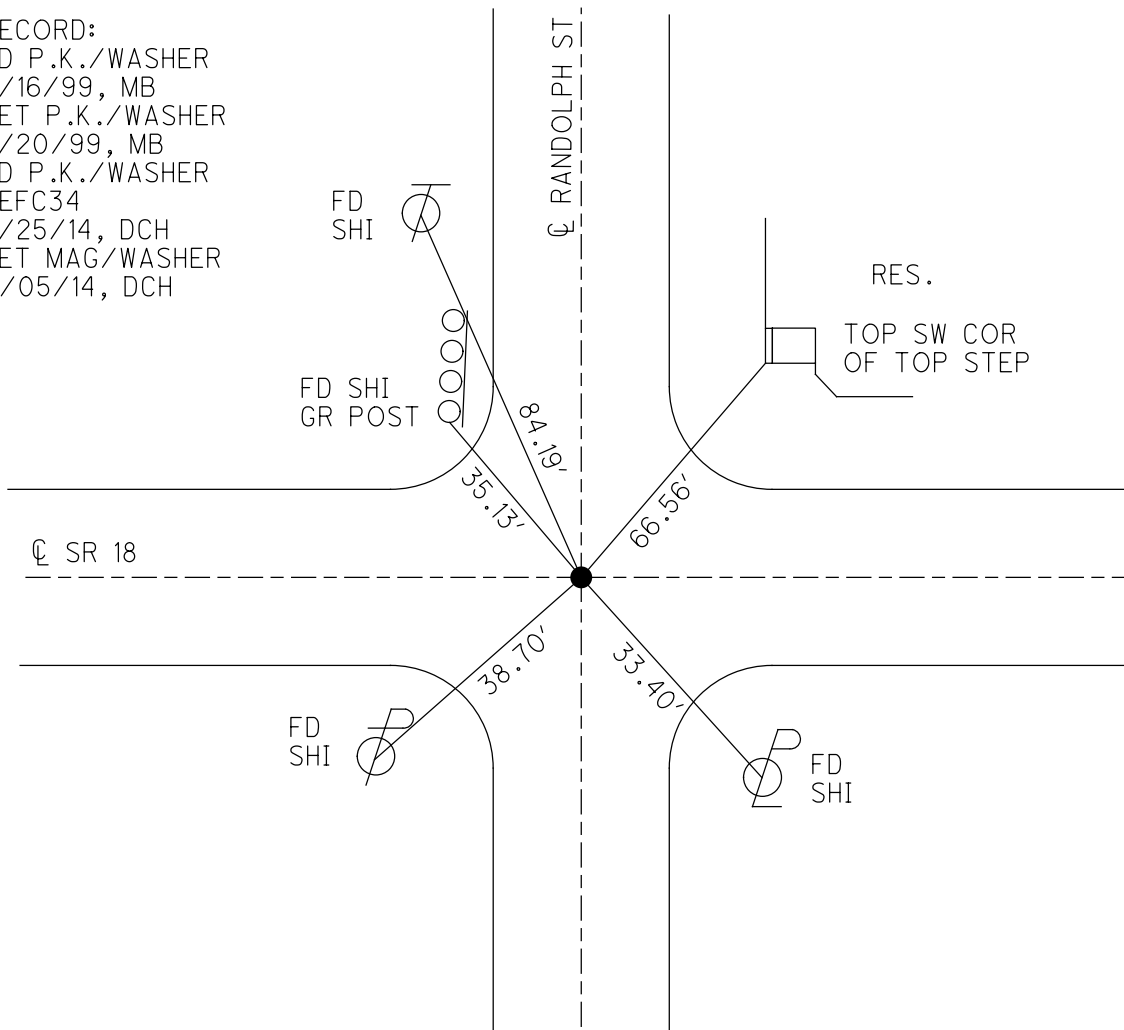
GEOID: 2012A

GRID: NORTHING: 550672.792

EASTING: 1663560.422



RECORD:
 FD P.K./WASHER
 6/16/99, MB
 SET P.K./WASHER
 7/20/99, MB
 FD P.K./WASHER
 REFC34
 8/25/14, DCH
 SET MAG/WASHER
 11/05/14, DCH



O.D.O.T. DISTRICT 2 SURVEY OFFICE

PERSONNEL _____

REFERENCE NO. _____

SHEET 10 OF 29

NOTES Revised

H.C. Canterbury

R.C. Rousos

DATE 6-16-99

WEATHER Cloudy

TEMP. 65°

ROUTE SR 18

COUNTY Wood

TOWNSHIP Bloom

SECTION 33

T 3 N R 11 E

TYPE MONUMENT PK & washer

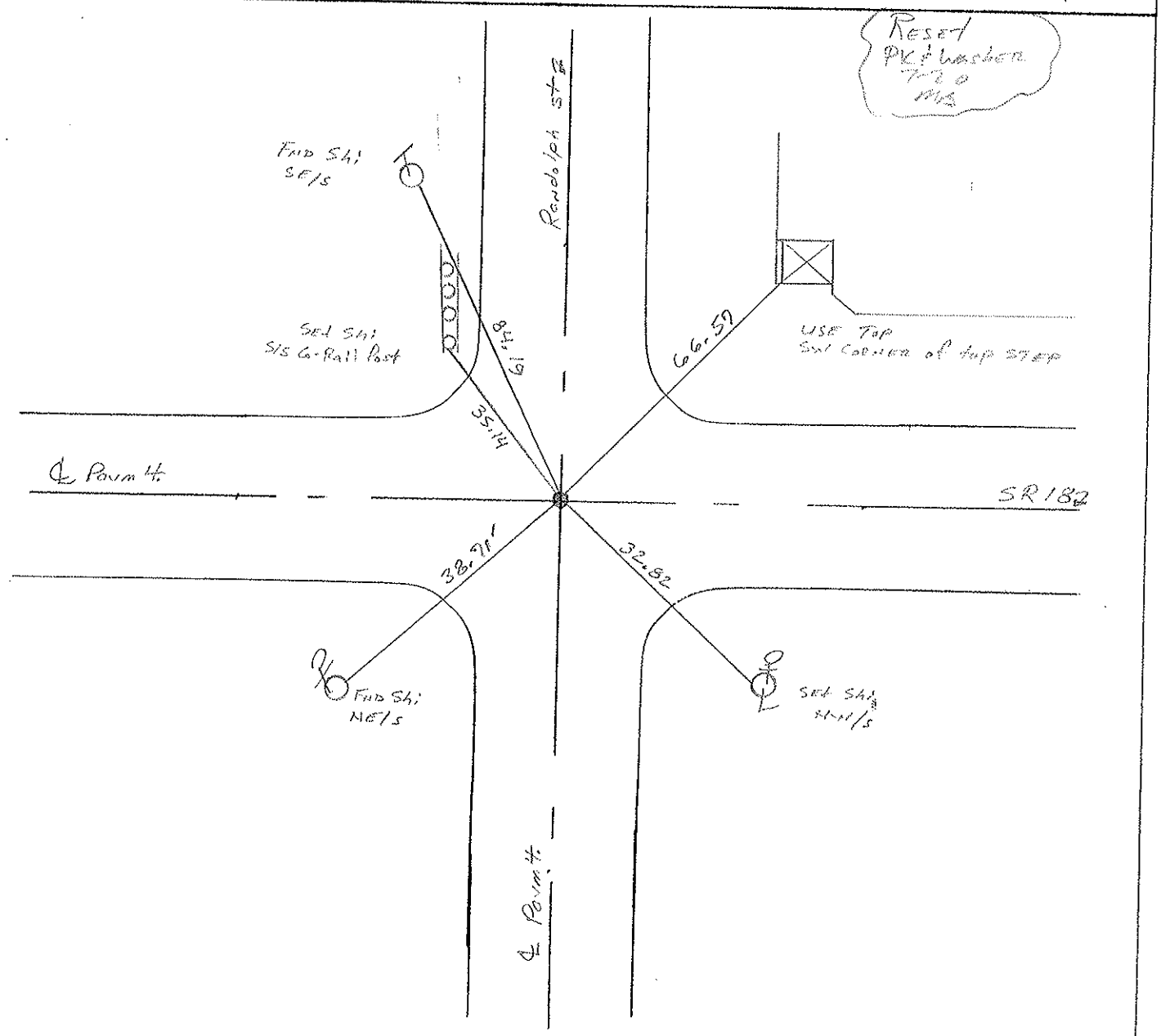
ON SURFACE - BELOW 4 1/2"

LEFT - CL PAV'T. - RIGHT CL Both Pav'ts.

TO EDGE PAVEMENT

S.L.M. 863102

3	3



O.D.O.T. DISTRICT 2 SURVEY OFFICE

PERSONNEL _____

REFERENCE NO. 34 B

SHEET _____ OF _____

NOTES HOFFMAN

H.C. BARNHISEL

R.C. PISTRYKOWSKI

DATE 5-13-86

WEATHER P. Cloudy

TEMP. 65°

ROUTE SR 18

COUNTY WOOD

TOWNSHIP Bloom

SECTION 33

T3 N R 11 E

TYPE MONUMENT R.R. SPIKE

~~ON SURFACE~~ - BELOW 4 1/2"

~~LEFT - & PAV'T. - RIGHT~~ & BOTH PARTS

TO EDGE PAVEMENT

S.L.M. 862 + 51

