

O.D.O.T. DISTRICT 2 SURVEY OFFICE (USE ONLY)

PERSONNEL \_\_\_\_\_

REFERENCE NO. 34 D

SHEET 17 OF 35

NOTES HOMAN

DATE 8/25/14

ROUTE SR 18

H.C. LEU

WEATHER SUNNY

COUNTY WOOD

R.C. RHOADES

TEMP. 85°

TOWNSHIP BLOOM

SECTION 33

DWG BY MILLER PID 93417

T 3 N R 11 E

TYPE MONUMENT P.K./WASHER

ON SURFACE - ~~BELOW~~ ON

OFFSET  $\odot$  PAVEMENT ON LT : RT

- TO - EDGE PAVEMENT

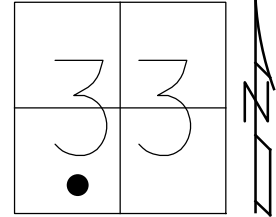
STATION: 866+78.70

HORIZ.DATUM: NAD83 (2011)

GEOID: 2012A

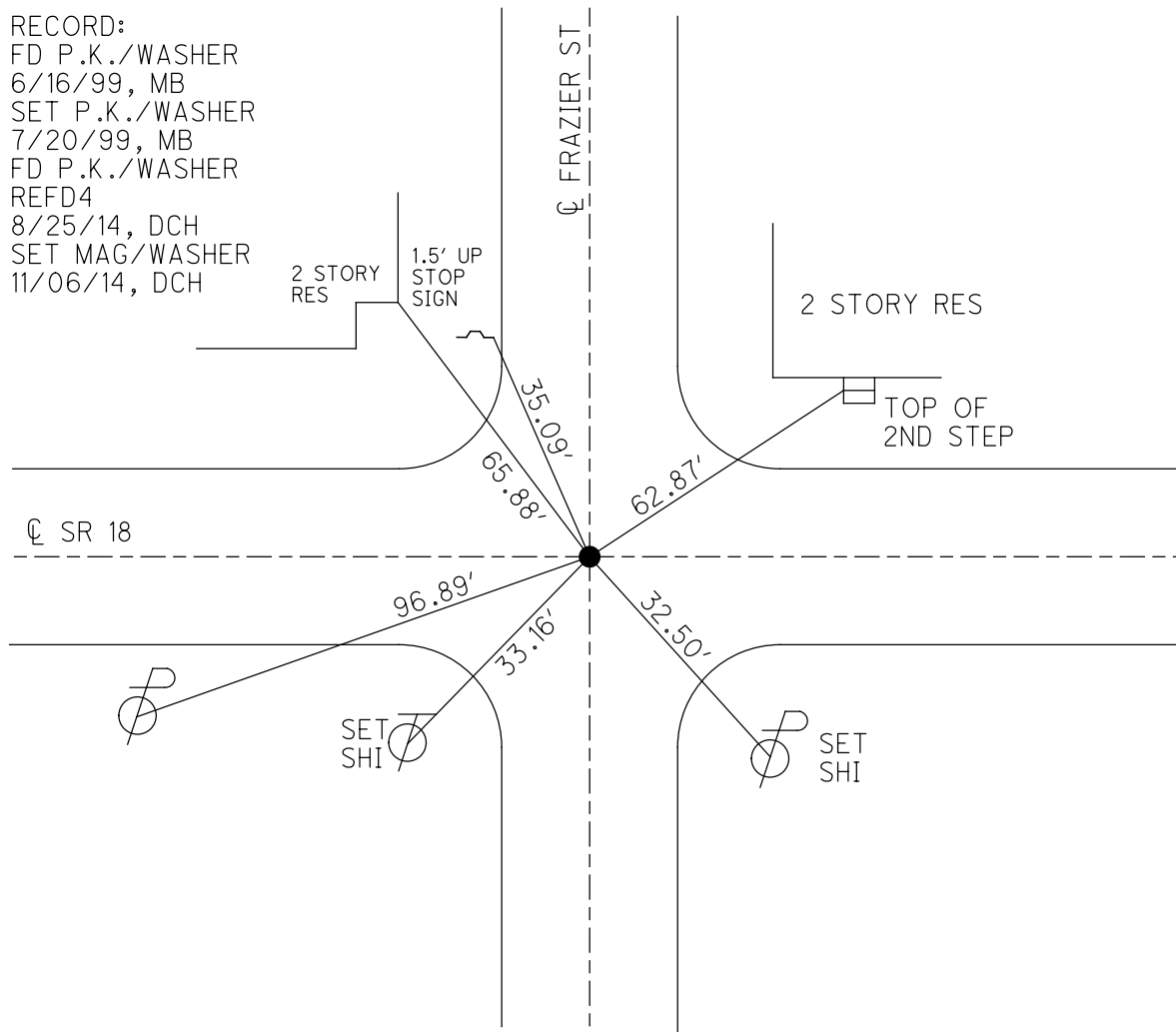
GRID: NORTHING: 550657.965

EASTING: 1663947.529



RECORD:

FD P.K./WASHER  
6/16/99, MB  
SET P.K./WASHER  
7/20/99, MB  
FD P.K./WASHER  
REFD4  
8/25/14, DCH  
SET MAG/WASHER  
11/06/14, DCH



# O.D.O.T. DISTRICT 2 SURVEY OFFICE

PERSONNEL \_\_\_\_\_

REFERENCE NO. \_\_\_\_\_

SHEET 11 OF 29

NOTES Balkhise1

H.C. Camdenbury

R.C. Rosses

DATE 6-16-93

WEATHER Cloudy

TEMP. +65

ROUTE SR 18

COUNTY Wood

TOWNSHIP Bloom

SECTION 33

T3 N R 11 E

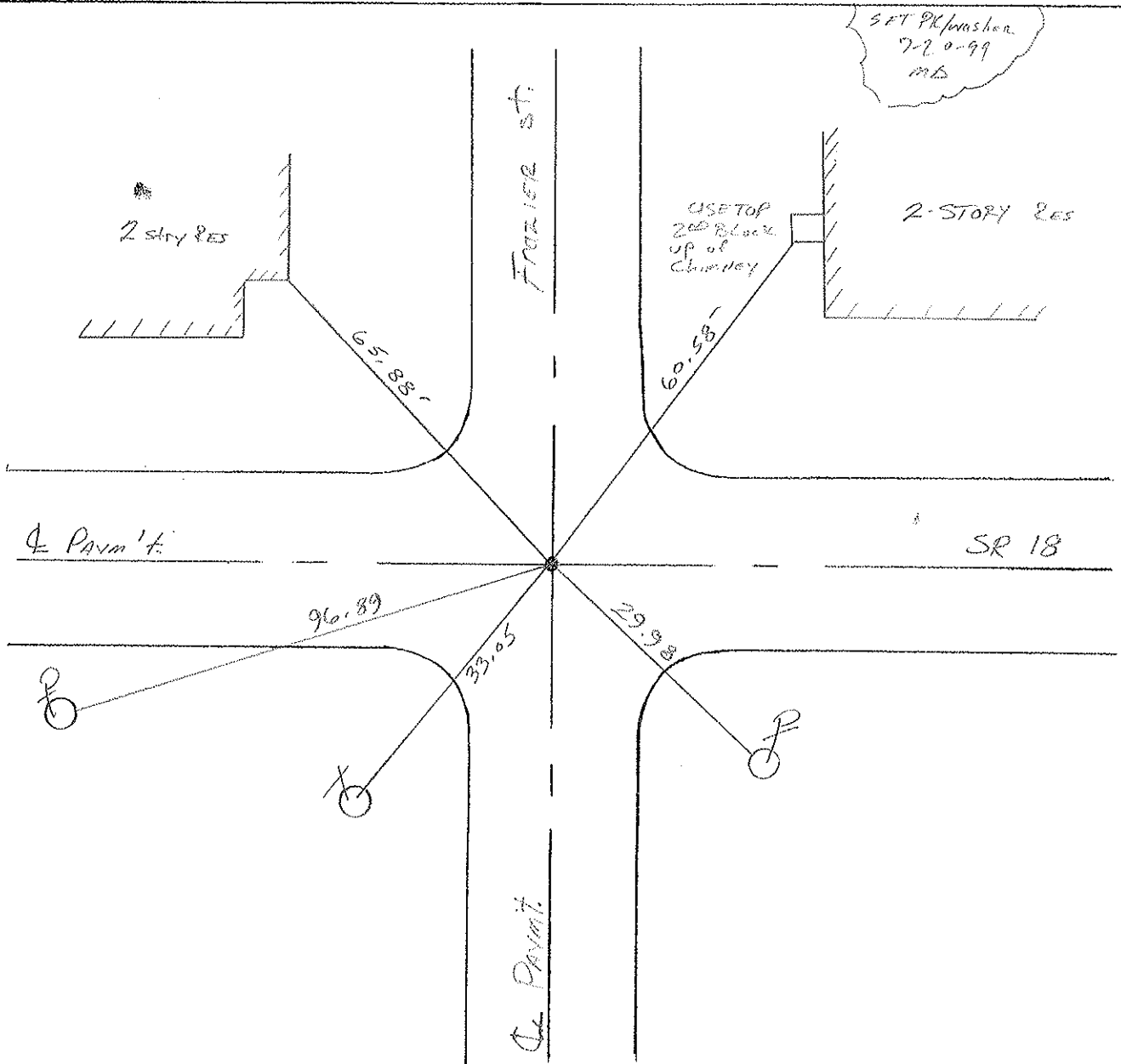
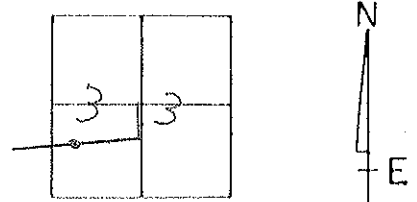
TYPE MONUMENT PK Washer

ON SURFACE - ~~BELOW~~ YES

~~LEFT -~~ PAV'T. - RIGHT Both Roads

TO EDGE PAVEMENT

S.L.M. 867+90



# O.D.O.T. DISTRICT 2 SURVEY OFFICE

PERSONNEL

REFERENCE NO. 34c

SHEET \_\_\_\_\_ OF \_\_\_\_\_

NOTES HOFFMAN

H.C. BARNAISEL

DATE 5-13-86

ROUTE SR 18

R.C. PIETRYKOWSKI

WEATHER cloudy

COUNTY Wood

TEMP. 65°

TOWNSHIP Bloom

SECTION 33

T. 3 N. R. 11 E.

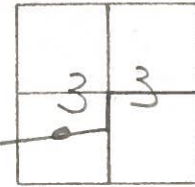
TYPE MONUMENT P.K. Nail By others

ON SURFACE - BELOW yes

LEFT- & PAV'T. - RIGHT Both Pavts

TO EDGE PAVEMENT

S.L.M. 866 + 39



Set P/K + washer  
6-17-86  
MOB

