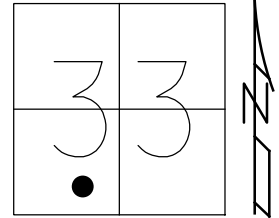


O.D.O.T. DISTRICT 2 SURVEY OFFICE (USE ONLY)

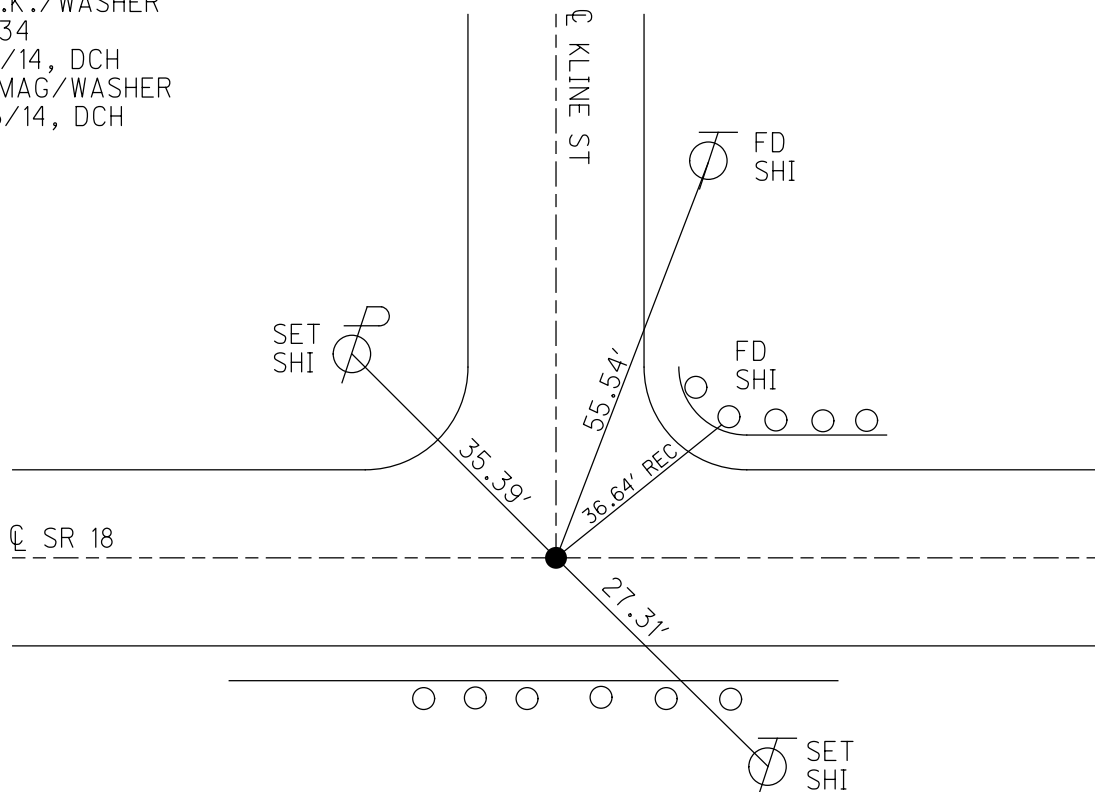
PERSONNEL _____ REFERENCE NO. 34 E SHEET 18 OF 35
 NOTES HOMAN DATE 8/25/14 ROUTE SR 18
 H.C. LEU WEATHER SUNNY COUNTY WOOD
 R.C. RHOADES TEMP. 85° TOWNSHIP BLOOM
 DWG BY MILLER PID 93417 SECTION 33
 T 3 N R 11 E

TYPE MONUMENT P.K./WASHER
 ON SURFACE - ~~BELOW~~ ON
 OFFSET \odot PAVEMENT ON LT : RT
9.2' TO RT EDGE PAVEMENT
 STATION: 870+49.60



HORZ. DATUM: NAD83 (2011) GEOID: 2012A
 GRID: NORTHING: 550643.268 EASTING: 1664318.137

RECORD:
 FD P.K./WASHER
 6/16/99, MB
 SET P.K./WASHER
 7/20/99, MB
 FD P.K./WASHER
 REFE34
 8/25/14, DCH
 SET MAG/WASHER
 11/06/14, DCH



O.D.O.T. DISTRICT 2 SURVEY OFFICE

PERSONNEL _____

REFERENCE NO. 34

SHEET 12 OF 29

NOTES Barthel

H.C. Canterbury

DATE 6-16-99

ROUTE SR 18

R.C. Rouses III

WEATHER Cloudy

COUNTY Wood

TEMP. 65°

TOWNSHIP Rloom

SECTION 33

T.3 N R.11 E

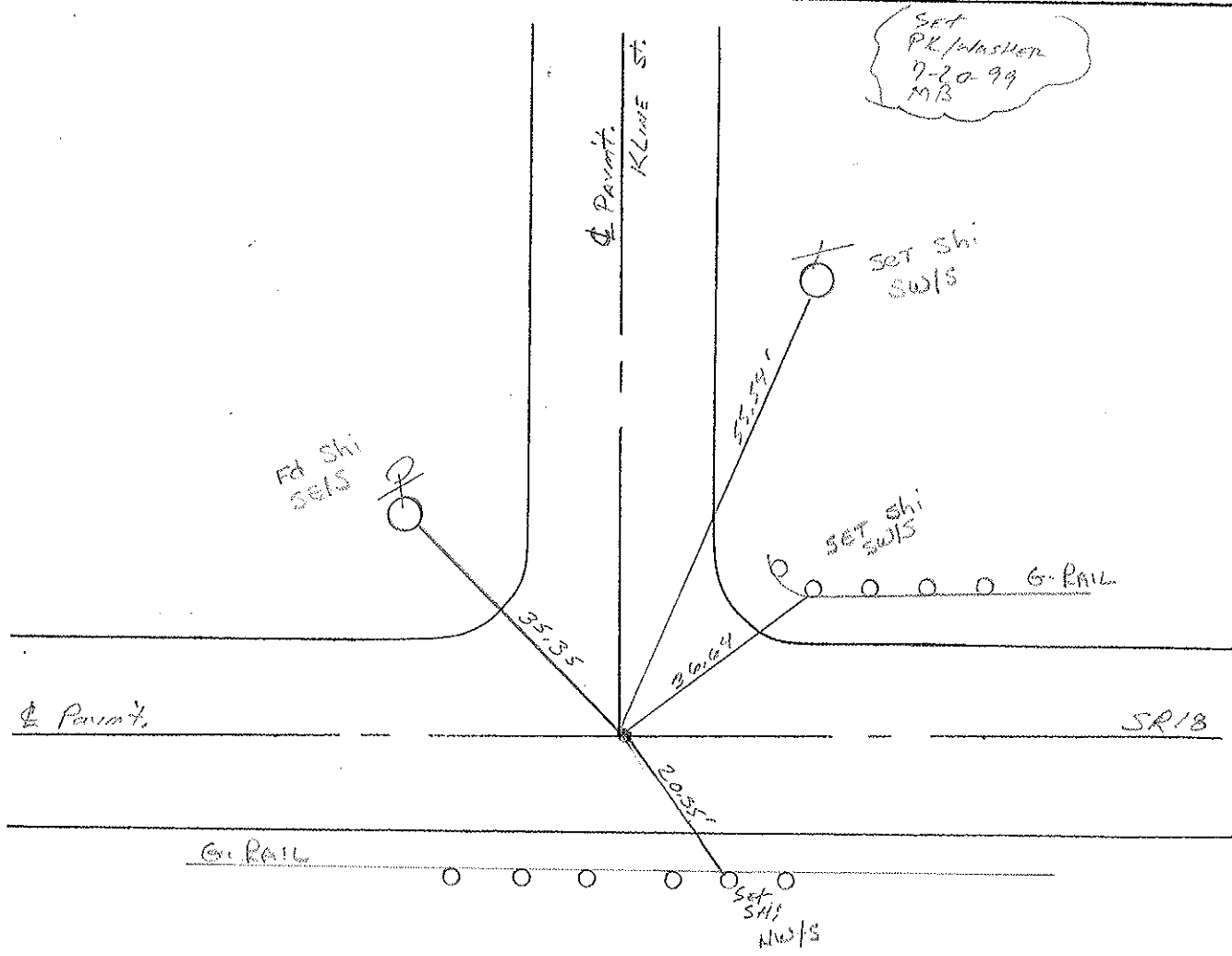
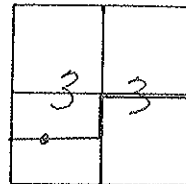
TYPE MONUMENT P.K. NAIL / WASHER

ON SURFACE - BELOW YES

LEFT - ☉ PAV'T. - RIGHT ☉ Both Pav'ts

9.2 TO RT EDGE PAVEMENT

S.L.M. 870 + 61



O.D.O.T. DISTRICT 2 SURVEY OFFICE

PERSONNEL _____

REFERENCE NO. 34 D

SHEET _____ OF _____

NOTES Hoffman

H.C. BARNHISEL

DATE 5-13-86

ROUTE SR 18

R.C. PIETRYKOWSKI

WEATHER cloudy

COUNTY WOOD

TEMP. 65°

TOWNSHIP Bloom

SECTION 33

T.3 N R.11 E

TYPE MONUMENT P.K. Nail By OTHERS

ON SURFACE - ~~BELOW~~ yes

~~LEFT - & PAV'T. - RIGHT~~ BOTH Pavts

TO EDGE PAVEMENT

S.L.M. 870 +1

