

O.D.O.T. DISTRICT 2 SURVEY OFFICE (USE ONLY)

PERSONNEL

REFERENCE NO. 35

SHEET 19 OF 35

NOTES HOMAN

DATE 8/25/14

ROUTE SR 18

H.C. LEU

WEATHER SUNNY

COUNTY WOOD

R.C. RHOADES

TEMP. 85°

TOWNSHIP BLOOM

SECTION 33

DWG BY MILLER

PID 93417

T 3 N R 11 E

TYPE MONUMENT 3/4" IPIN

ON SURFACE - ~~BELOW~~ 2"

OFFSET ϕ PAVEMENT 47' ~~LT:RT~~

- TO - EDGE PAVEMENT

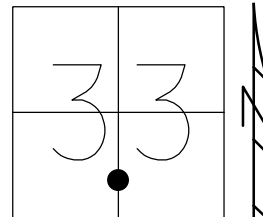
STATION: 877+93.74

HORIZ.DATUM: NAD83 (2011)

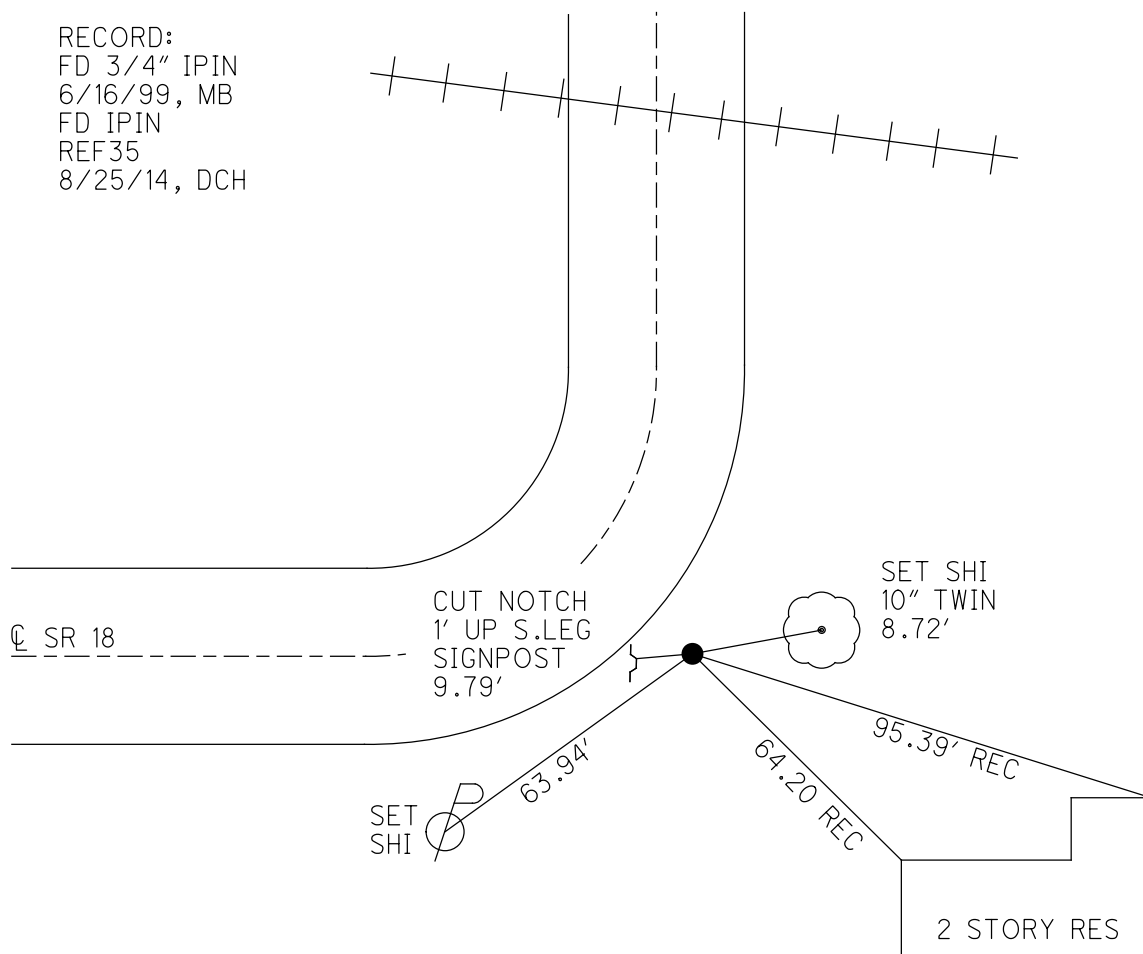
GEOID: 2012A

GRID: NORTHING: 550613.900

EASTING: 1665061.694



RECORD:
FD 3/4" IPIN
6/16/99, MB
FD IPIN
REF35
8/25/14, DCH



O.D.O.T. DISTRICT 2 SURVEY OFFICE

PERSONNEL _____

REFERENCE NO. 35

SHEET 13 OF 29

NOTES Boathouse

H.C. Canterbury

R.C. Rouses III

DATE 6-16-98

WEATHER Cloudy

TEMP. +60

ROUTE SP 18

COUNTY Bloom

TOWNSHIP Bloom

SECTION 33

T. 3 N. R. 11 E.

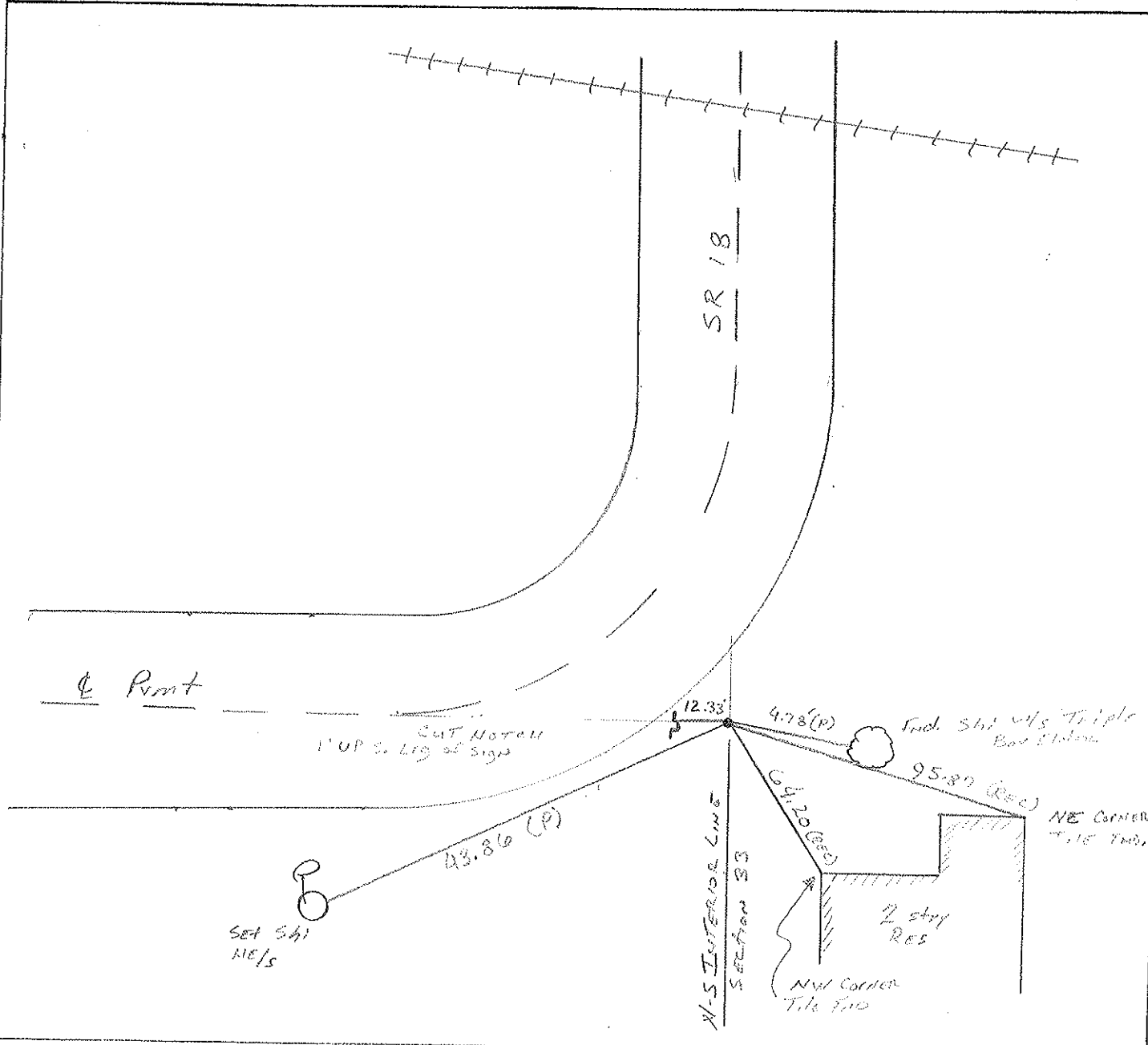
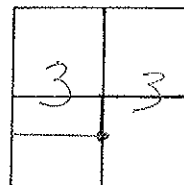
TYPE MONUMENT 3/4" I.R. ROD

ON SURFACE - BELOW 2"

LEFT- & PAV'T. - RIGHT 47'

JO- EDGE PAVEMENT

S.L.M. 898+12



O.D.O.T. DISTRICT 2 SURVEY OFFICE

PERSONNEL

REFERENCE NO. 35

SHEET OF

NOTES Hoffman

H.C. BAKWHISZEL

DATE 5-13-86

ROUTE SR 18

R.C. PIETRYKOWSKI

WEATHER P. CLEAR

COUNTY WOOD

TEMP. 70°

TOWNSHIP Bloom

SECTION 33

T. 3 N. R. 11 E.

TYPE MONUMENT 3/4" I. ROD

ON SURFACE - ~~BELOW~~ yes

LEFT - & PAV'T. - RIGHT 47'

TO EDGE PAVEMENT

S.L.M. 877+41

