

O.D.O.T. DISTRICT 2 SURVEY OFFICE (USE ONLY)

PERSONNEL \_\_\_\_\_

REFERENCE NO. 36

SHEET 20 OF 35

NOTES HOMAN

DATE 8/26/14

ROUTE SR 18

H.C. LEU

WEATHER SUNNY

COUNTY WOOD

R.C. RHOADES

TEMP. 75°

TOWNSHIP BLOOM

DWG BY MILLER PID 93417

SECTION 33

T 3 N R 11 E

TYPE MONUMENT P.K.NAIL

ON SURFACE - ~~BELOW~~ ON

OFFSET 5.0' ~~RT~~ LT : RT

11.0' TO LT EDGE PAVEMENT 1.0' S Q E.B.

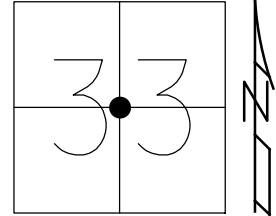
STATION: 885+63.77

HORZ.DATUM: NAD83 (2011)

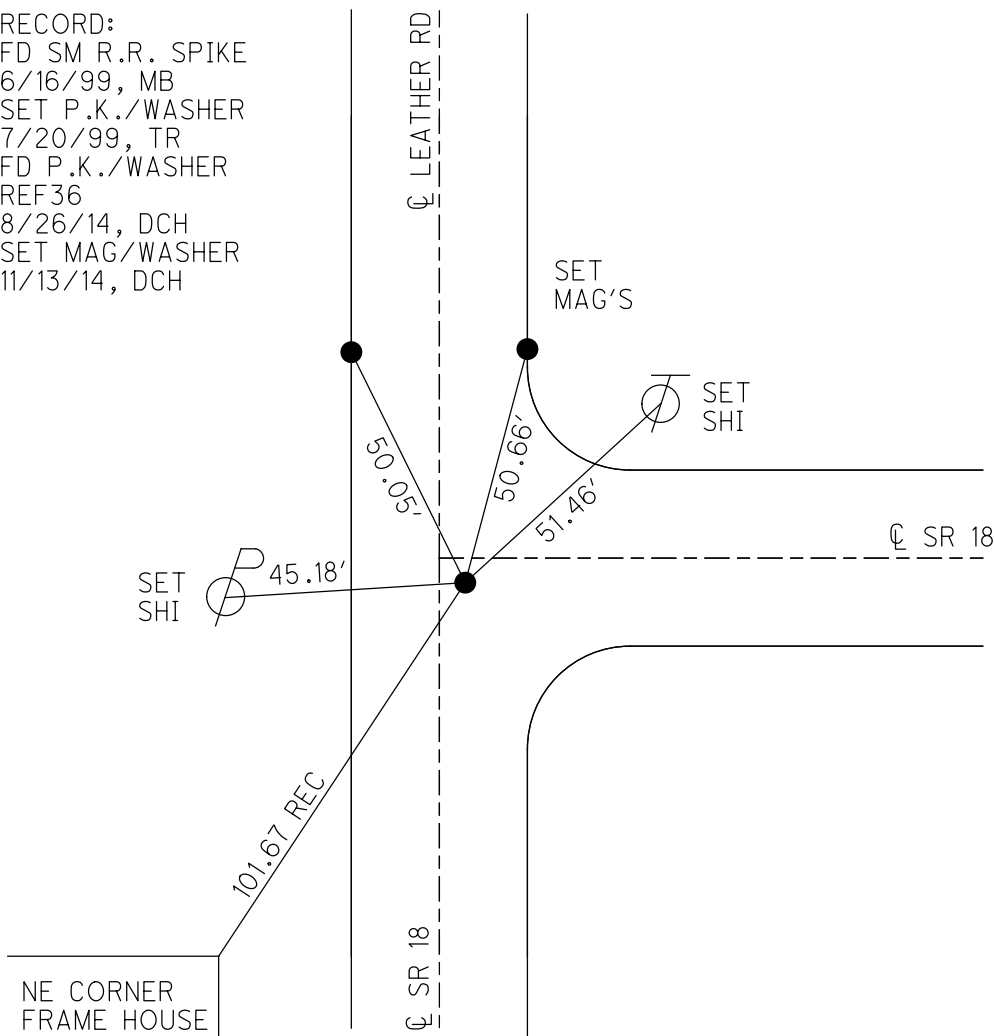
GEOID: 2012A

GRID: NORTHING: 551383.626

EASTING: 1665083.268



RECORD:  
 FD SM R.R. SPIKE  
 6/16/99, MB  
 SET P.K./WASHER  
 7/20/99, TR  
 FD P.K./WASHER  
 REF36  
 8/26/14, DCH  
 SET MAG/WASHER  
 11/13/14, DCH



# O.D.O.T. DISTRICT 2 SURVEY OFFICE

PERSONNEL \_\_\_\_\_

REFERENCE NO. 36

SHEET 14 OF 29

NOTES Barnhart

H.C. Carterbury

R.C. Railroad III

DATE 6.16.99

WEATHER Cloudy

TEMP. +60°F

ROUTE SR 18

COUNTY Wood

TOWNSHIP Bloom

SECTION 33

T 3 H R 11 E

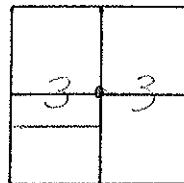
TYPE MONUMENT Small RR spike

ON SURFACE - BELOW 2" Below

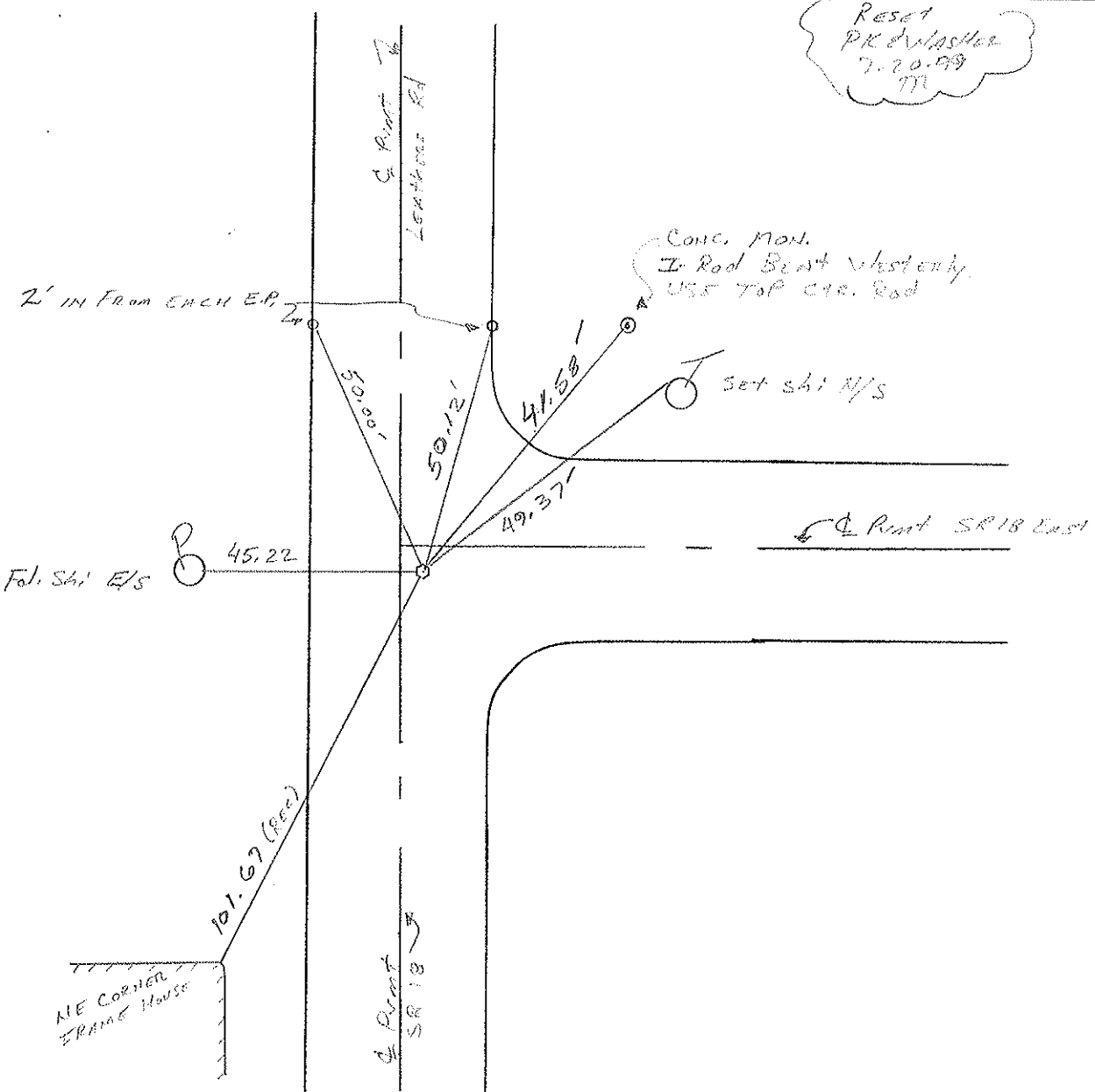
LEFT - & PAV'T. - RIGHT 10' W of & Road / 5' Rt. of & East

11.0 TO LT EDGE PAVEMENT

S.L.M. 885444



Reset  
PK & WASHER  
7.20.99  
ML





# O.D.O.T. DISTRICT 2 SURVEY OFFICE

PERSONNEL \_\_\_\_\_

REFERENCE NO. 36

SHEET \_\_\_\_\_ OF \_\_\_\_\_

NOTES Hoffman

H.C. BARNHISEL

R.C. PIETR/KOWSKI

DATE 5-13-86

WEATHER P. CLEAR

TEMP. 70°

ROUTE SR 18

COUNTY WOOD

TOWNSHIP Bloom

SECTION 33

T3 N R 11 E

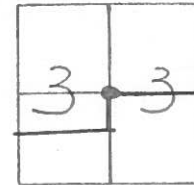
TYPE MONUMENT SMALL R.R. SPIKE

ON SURFACE - ~~BELOW~~ yes

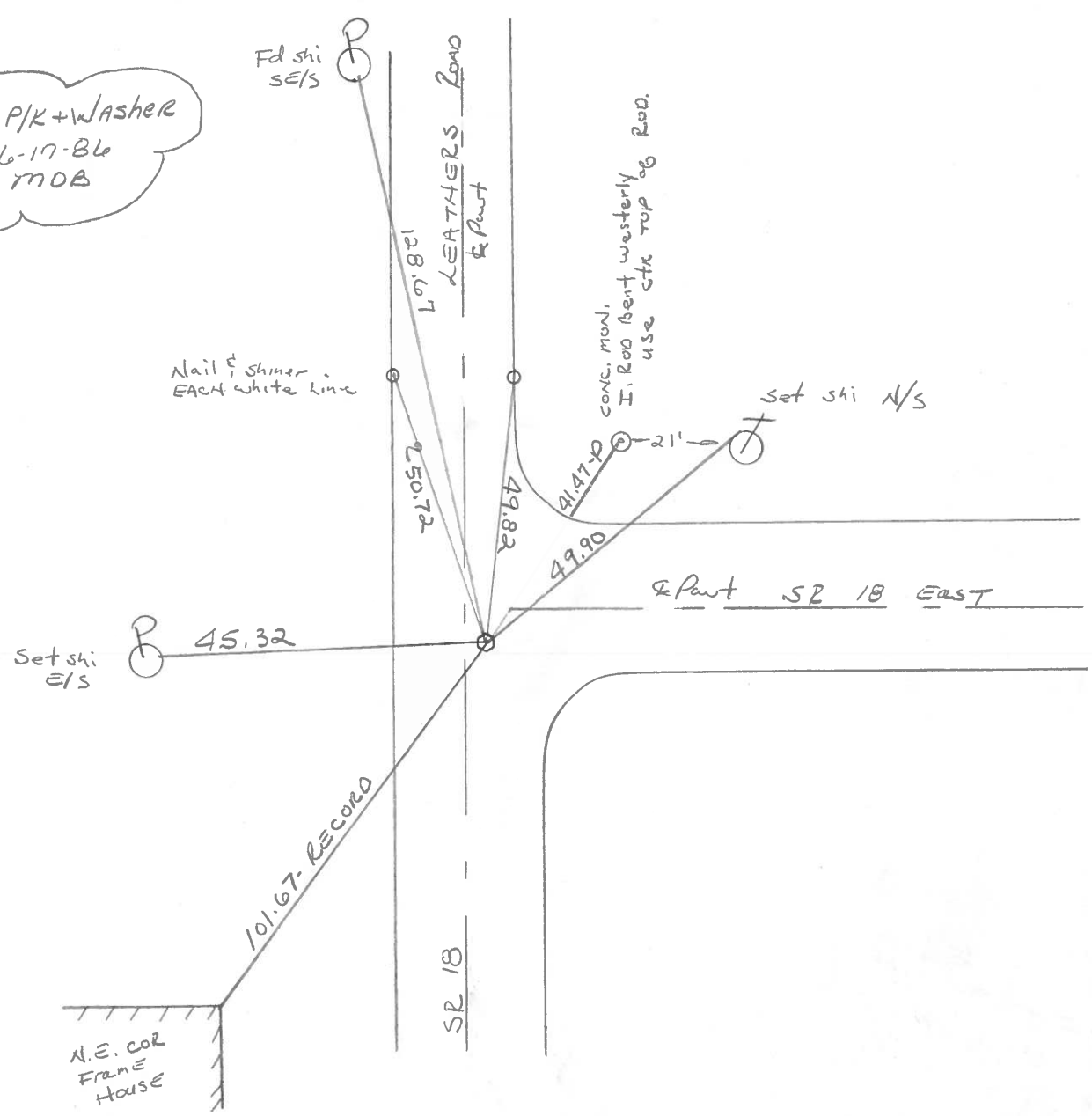
~~LEFT - & PAV'T. - RIGHT~~ 1.0' N&S / 5' RIGHT

TO EDGE PAVEMENT

S.L.M. 884+92



Set P/K + Washer  
6-17-86  
MOB



County Wood SR 18

Date 5-3-1979

Township Bloom

Weather Cloudy

Section Interior Corner Sec. 33

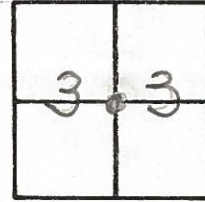
Temp. 66°

T3N, R11E

Personnel Smith

Knape

Meard



36

