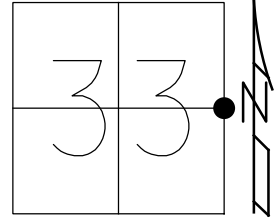


O.D.O.T. DISTRICT 2 SURVEY OFFICE (USE ONLY)

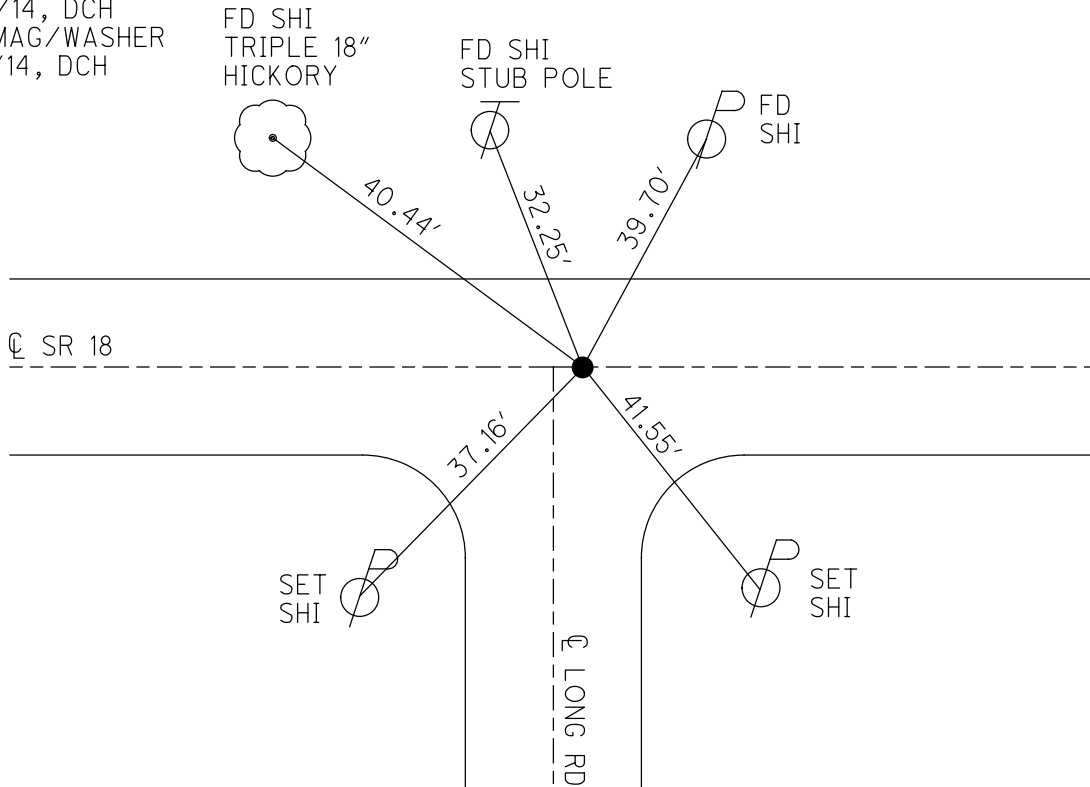
PERSONNEL \_\_\_\_\_ REFERENCE NO. 37 SHEET 21 OF 35  
 NOTES HOMAN DATE 8/26/14 ROUTE SR 18  
 H.C. LEU WEATHER SUNNY COUNTY WOOD  
 R.C. HOMAN TEMP. 75° TOWNSHIP BLOOM  
 DWG BY MILLER PID 93417 SECTION 33  
 T 3 N R 11 E

TYPE MONUMENT P.K. NAIL  
 ON SURFACE - ~~BELOW~~ ON  
 OFFSET  $\phi$  PAVEMENT ON LT : RT  
9.7' TO LT EDGE PAVEMENT 7' E. OF  $\phi$  S.  
 STATION: 912+22.71



HORZ.DATUM: NAD83 (2011) GEOID: 2012A  
 GRID: NORTHING: 551269.407 EASTING: 1667739.760

RECORD:  
 FD P.K. NAIL  
 6/16/99, MB  
 SET P.K./WASHER  
 7/20/99, TR  
 FD P.K./WASHER  
 REF37  
 8/26/14, DCH  
 SET MAG/WASHER  
 11/13/14, DCH



# O.D.O.T. DISTRICT 2 SURVEY OFFICE

PERSONNEL \_\_\_\_\_

REFERENCE NO. 37

SHEET 15 OF 29

NOTES Barnhisel

H.C. Canterbury

R.C. Rouses III

DATE 6.16.99

WEATHER SUNNY

TEMP. +60°

ROUTE SR18

COUNTY Wood

TOWNSHIP Bloom

SECTION 33

T. 3 N. R. 11 E

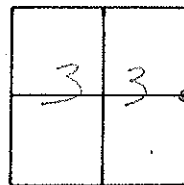
TYPE MONUMENT PK NAIL

ON SURFACE - ~~BELOW~~ Surface

LEFT - ~~PAV'T.~~ - RIGHT yes

9.7' TO Lt EDGE PAVEMENT

S.L.M. 911+91 / 7' EAST of South



Reset PK Nail  
7.20.99  
TR

Fr. S.A.  
Triple 18"  
Hickory



40.56'

FOUND  
SET

32.21'

B

SET S.A.  
SIS

39.15'

Q Pavt.

SR18

35.21'

SET S.A.  
NE/S

Q Pavt. Long Posts

41.73'

SET S.A.  
NW/S

# O.D.O.T. DISTRICT 2 SURVEY OFFICE

PERSONNEL \_\_\_\_\_

REFERENCE NO. 37

SHEET \_\_\_\_\_ OF \_\_\_\_\_

NOTES Hoffman

H.C. BARWISSEL

DATE 5-13-86

ROUTE SR 18

R.C. PIETRYKOWSKI

WEATHER P. CLEAR

COUNTY WOOD

TEMP. 70°

TOWNSHIP Bloom

SECTION 33

T. 3 N R. 11 E

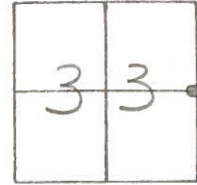
TYPE MONUMENT SMALL R.R. SPIKE

ON SURFACE ~~-BELOW~~ yes

LEFT- & PAV'T. ~~-RIGHT~~ yes

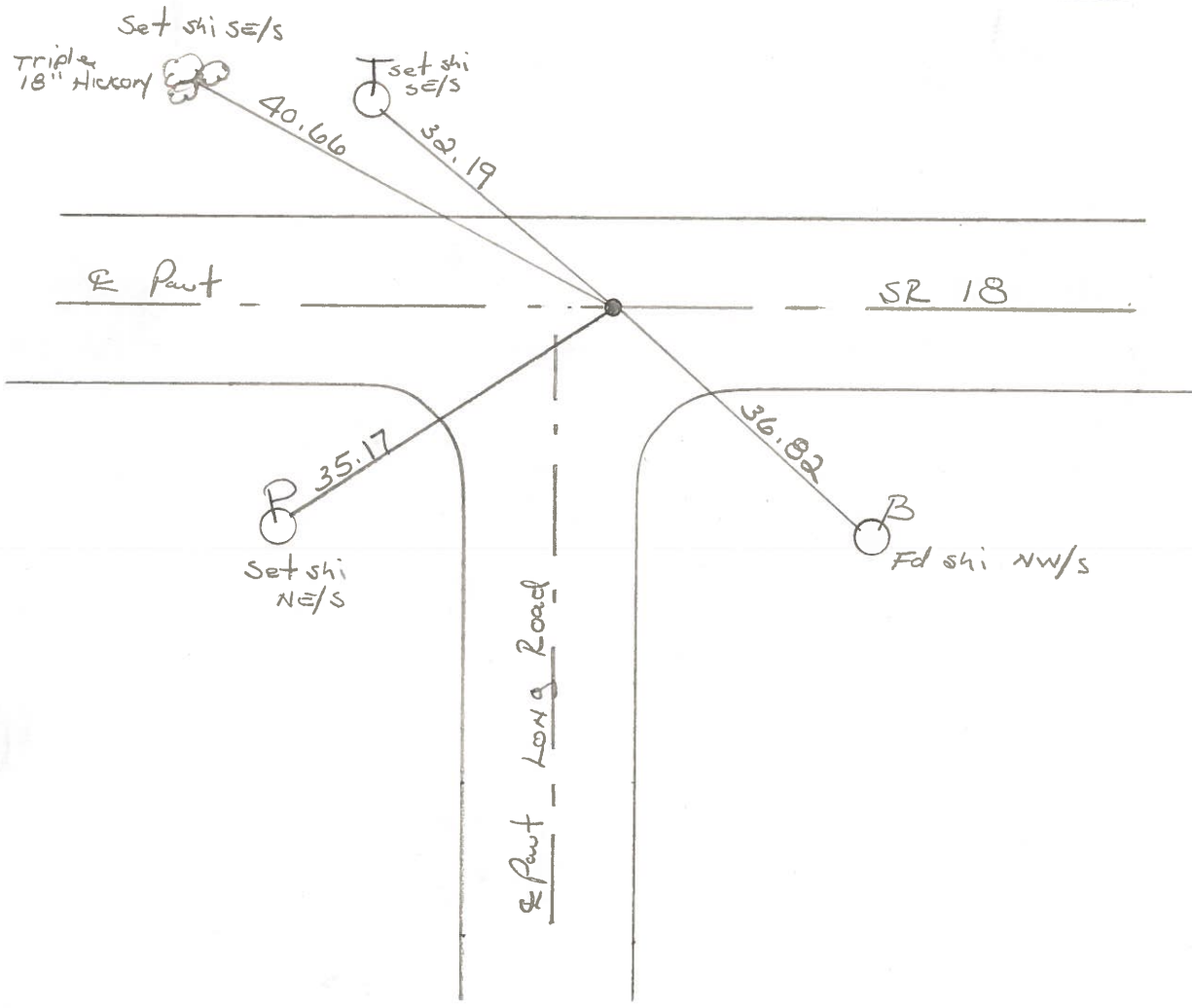
9.6' TO LT EDGE PAVEMENT

S.L.M. 911 + 20



70 + 68.59

Set P/K + Washer  
6-17-86  
MDB



County Wood SR 18

Date 5-4-1979

Township Bloom

Weather Cloudy

Section E 1/4 Post Sec. 33

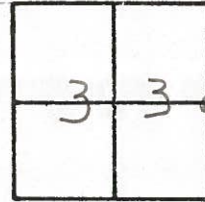
Temp. 45°

T3N, R1E

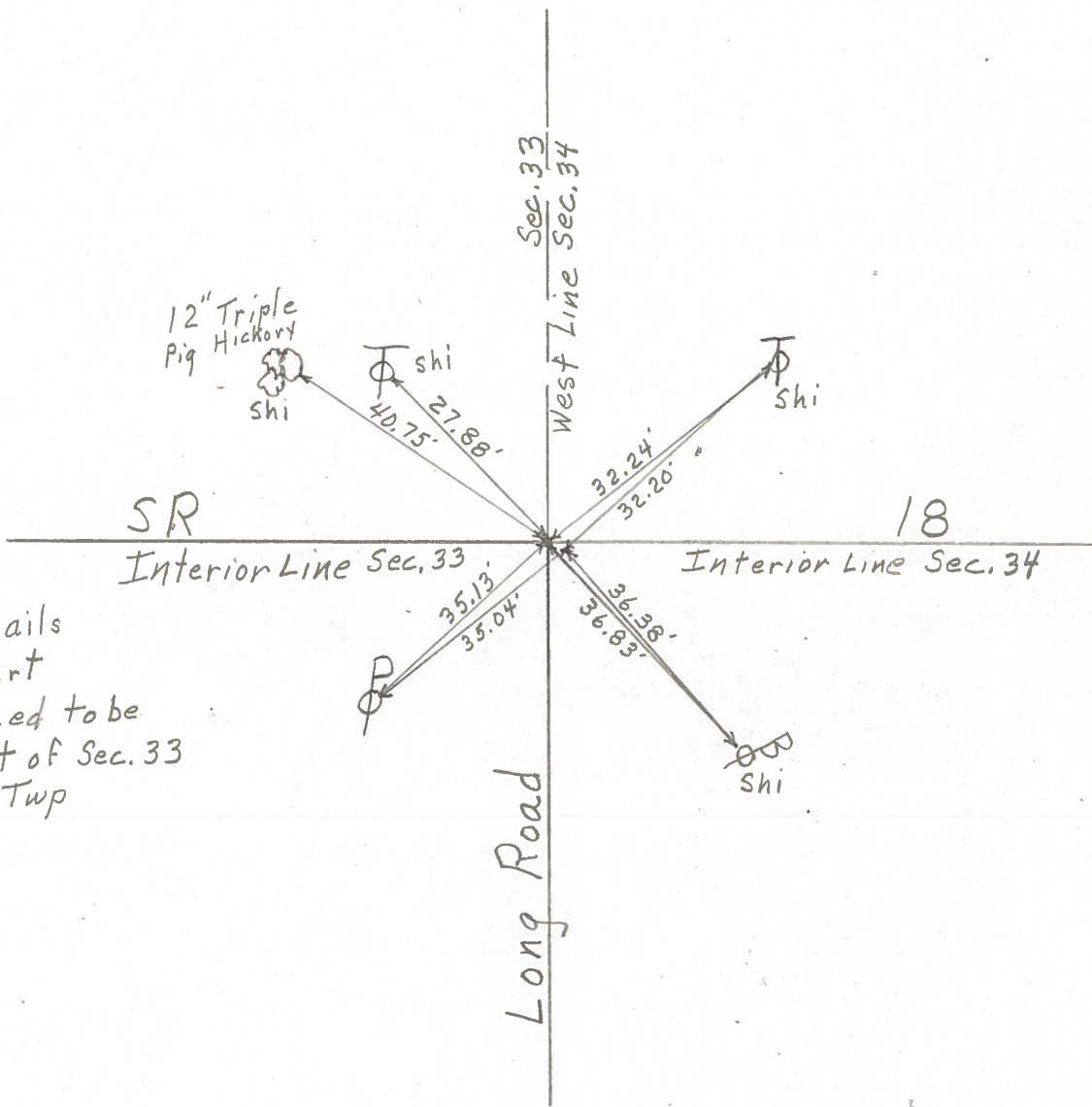
Personnel Smith

Bowers

Mead



37



Fd. 2 nails  
 46 Apart  
 Presumed to be  
 E 1/4 Post of Sec. 33  
 Bloom Twp