

O.D.O.T. DISTRICT 2 SURVEY OFFICE (USE ONLY)

PERSONNEL

REFERENCE NO. 40 A

SHEET 27 OF 36

NOTES ASTON

DATE 8/10/23

ROUTE SR 18

H.C. NIESE

WEATHER CLOUDY

COUNTY WOOD

R.C. AUBLE

TEMP. 74°

TOWNSHIP BLOOM

SECTION 35

DWG BY RHOADES

PID 95796

T 3 N R 11 E

TYPE MONUMENT MAG/WASHER

ON SURFACE - ~~BELOW~~ ON

OFFSET ☉ PAVEMENT 2' LT : ~~RT~~

- TO - EDGE PAVEMENT 2' W. OF ☉ N.

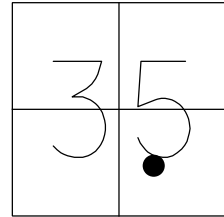
STATION: 1003+83.34

HORIZ.DATUM: NAD83 (2011)

GEOID: NAVD88 2018

GRID: NORTHING: 550445.844

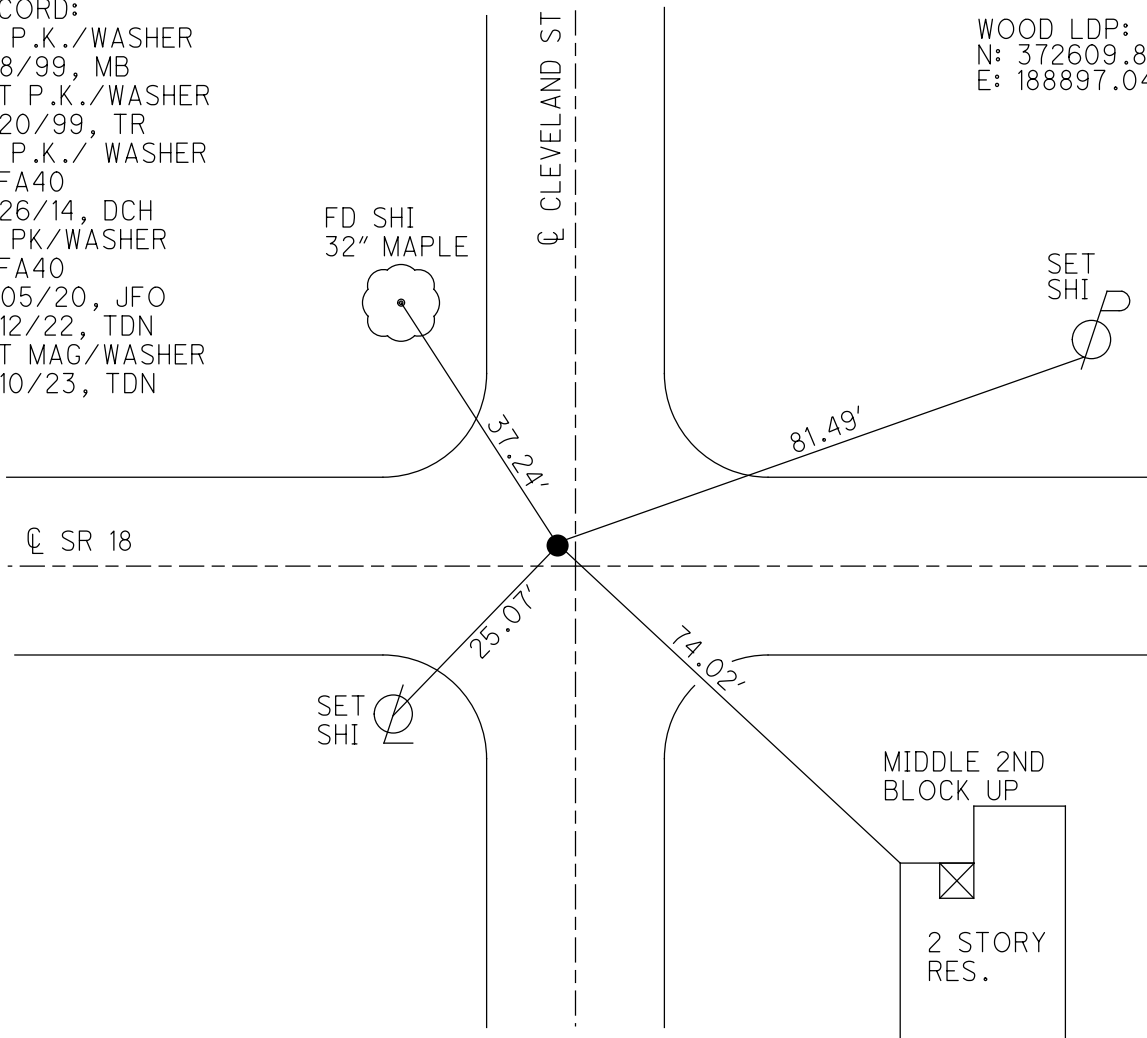
EASTING: 1676770.530



RECORD:

- FD P.K./WASHER
- 6/8/99, MB
- SET P.K./WASHER
- 7/20/99, TR
- FD P.K./ WASHER
- REFA40
- 8/26/14, DCH
- FD PK/WASHER
- REFA40
- 11/05/20, JFO
- 4/12/22, TDN
- SET MAG/WASHER
- 8/10/23, TDN

WOOD LDP:
N: 372609.800
E: 188897.044



O.D.O.T. DISTRICT 2 SURVEY OFFICE (USE ONLY)

PERSONNEL

REFERENCE NO. 40 A

SHEET 27 OF 35

NOTES BARNHEISEL

DATE 6/8/99

ROUTE SR 18

H.C. CANTERBURY

WEATHER SUNNY

COUNTY WOOD

R.C. ROUSES

TEMP. 90°

TOWNSHIP BLOOM

SECTION 35

DWG BY MILLER

PID 93417

T 3 N R 11 E

TYPE MONUMENT P.K./WASHER

ON SURFACE - ~~BELOW~~ ON

OFFSET \varnothing PAVEMENT 1.2' LT : ~~RT~~

- TO - EDGE PAVEMENT 2' W. OF \varnothing N.

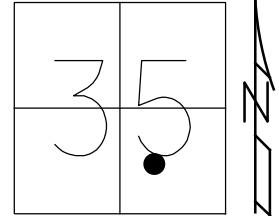
STATION: 1003+83.34

HORIZ.DATUM: NAD83 (2011)

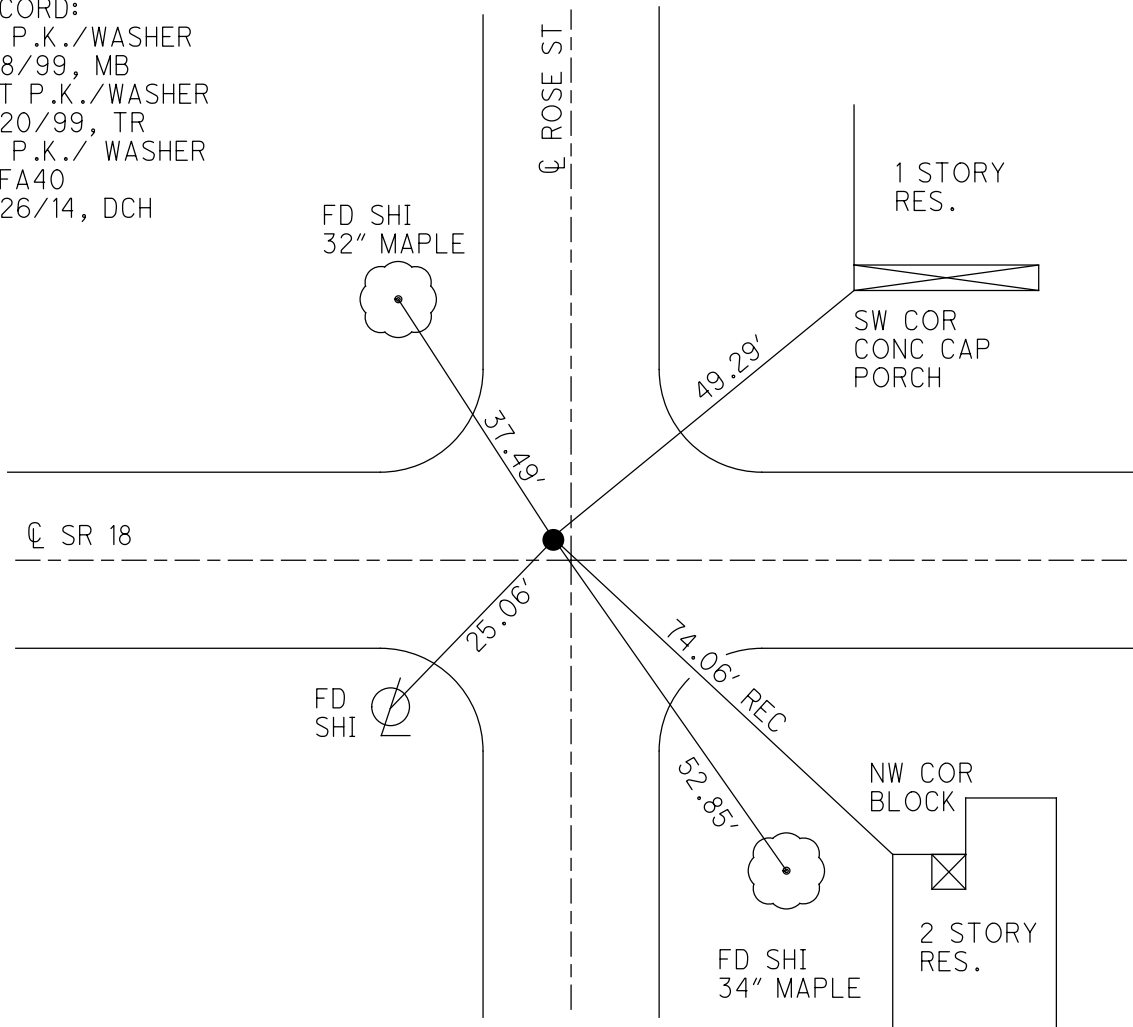
GEOID: 2012A

GRID: NORTHING: 550445.857

EASTING: 1676770.522



RECORD:
 FD P.K./WASHER
 6/8/99, MB
 SET P.K./WASHER
 7/20/99, TR
 FD P.K./WASHER
 REFA40
 8/26/14, DCH



O.D.O.T. DISTRICT 2 SURVEY OFFICE

PERSONNEL _____

REFERENCE NO. 40-A

SHEET 21 OF 29

NOTES Barnes

H.C. Carderbury

R.C. Rodas

DATE 6-8-99

WEATHER Sunny

TEMP. +90°

ROUTE SR 18

COUNTY WOOD

TOWNSHIP Bloom

SECTION 35

T 3 / R 11 E

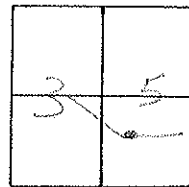
TYPE MONUMENT P.K. WASHER

ON SURFACE - BELOW Surface

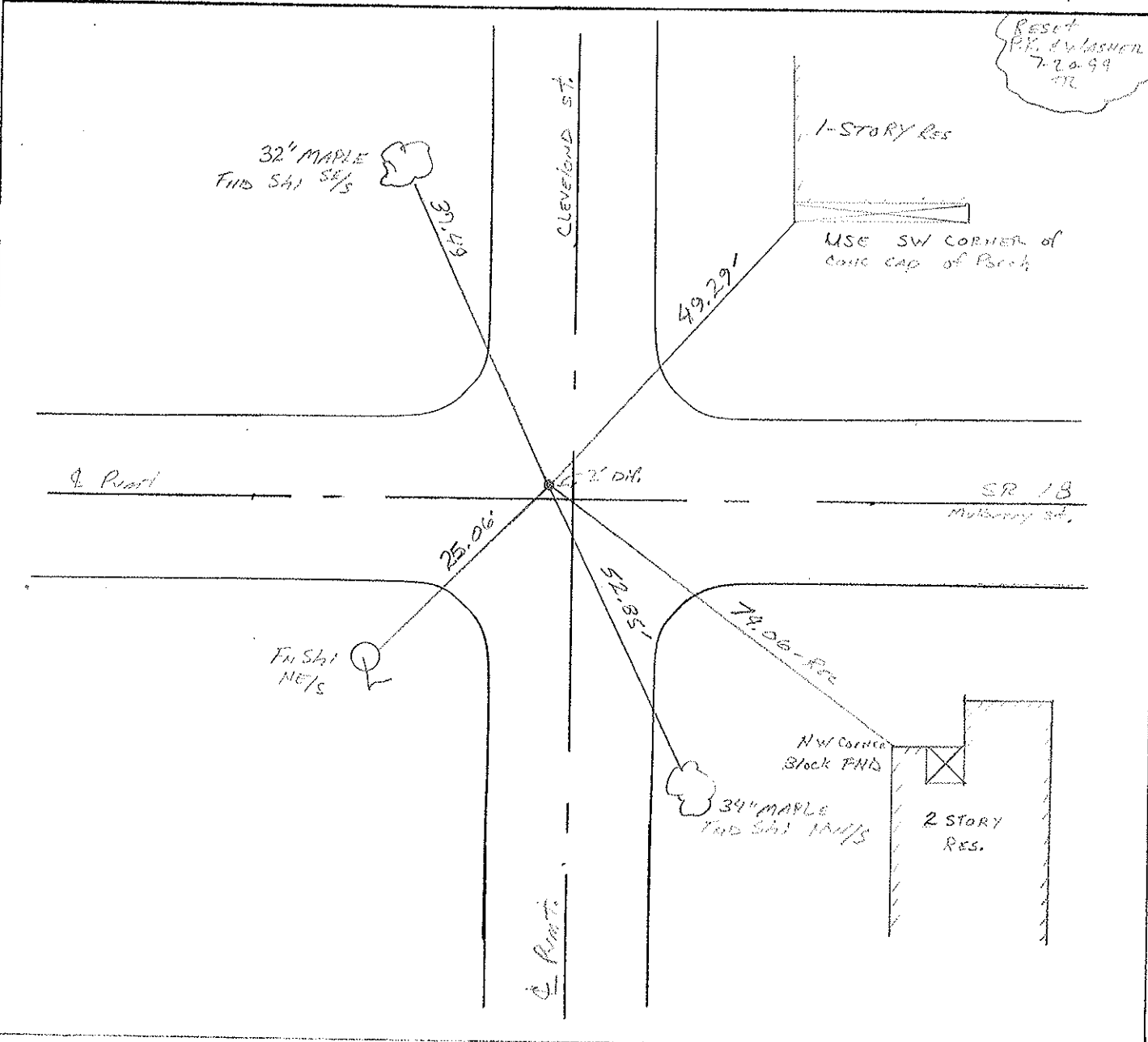
LEFT - ℄ PAV'T. - RIGHT 1.2 L+

- TO - EDGE PAVEMENT 2' W. OF ST. NORTH

S.L.M. 1003471



Reset
P.K. Washer
7-20-99
RL



O.D.O.T. DISTRICT 2 SURVEY OFFICE

PERSONNEL

REFERENCE NO. 40-A SHEET OF

NOTES Hoffman

H.C. BARNHISEL

R.C. LOCHRKE

DATE 5-14-86

WEATHER Cloudy

TEMP. 65°

ROUTE SR 18

COUNTY Wood

TOWNSHIP Bloom

SECTION 35

T. 3 N. R. 11 E

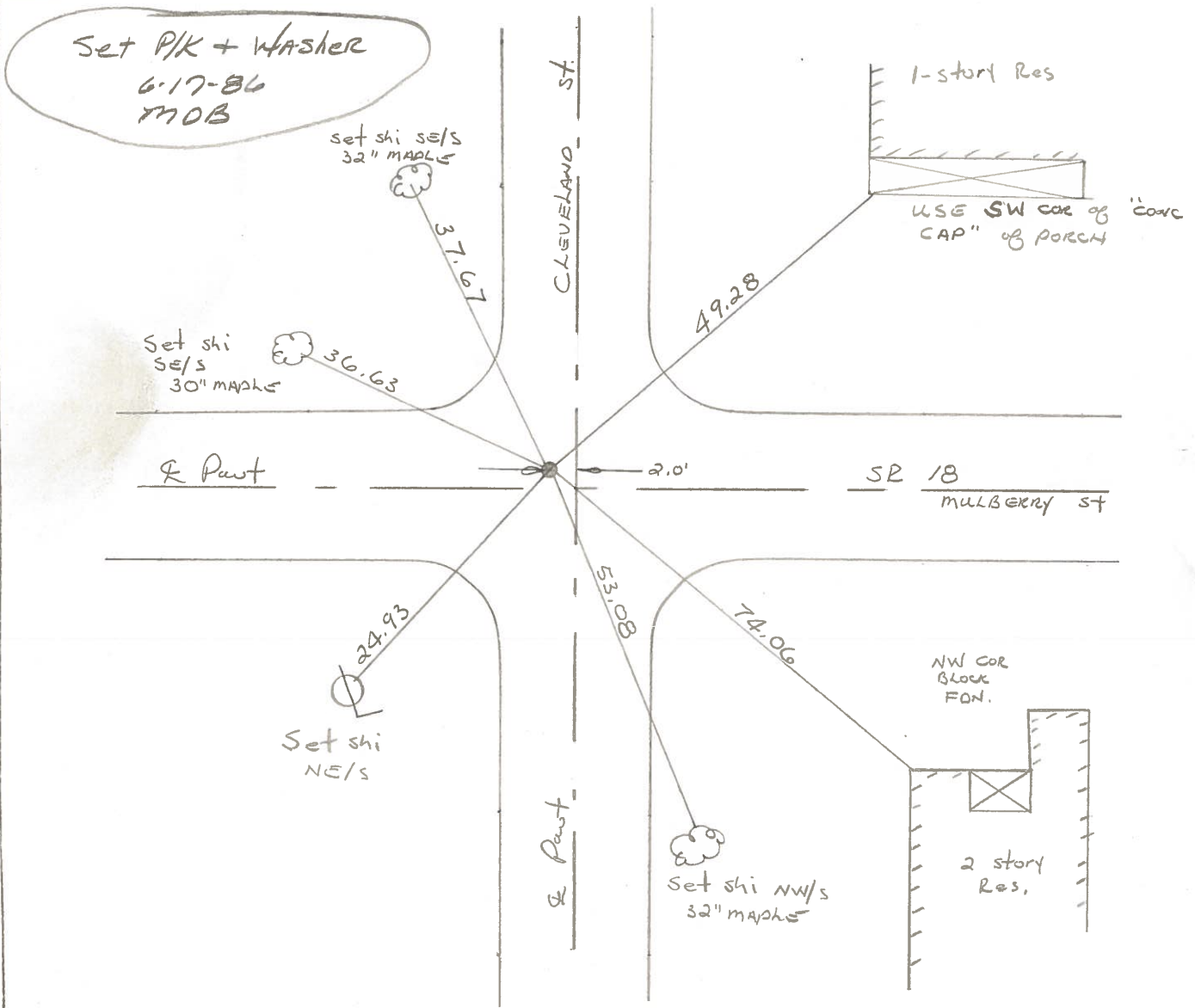
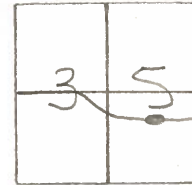
TYPE MONUMENT SMALL R.R. SPIKE

ON SURFACE - BELOW yes

LEFT- & PAV'T. - RIGHT 1.7'

 TO EDGE PAVEMENT

S.L.M. 1003+20



County Wood S.R. 18

Date 5-7-1979

Township Bloom

Weather clear

Section Bloomdale Corp.

Temp. 70°

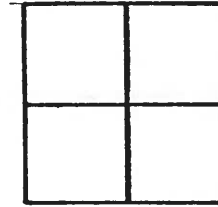
T3N, R11E

Personnel Smith

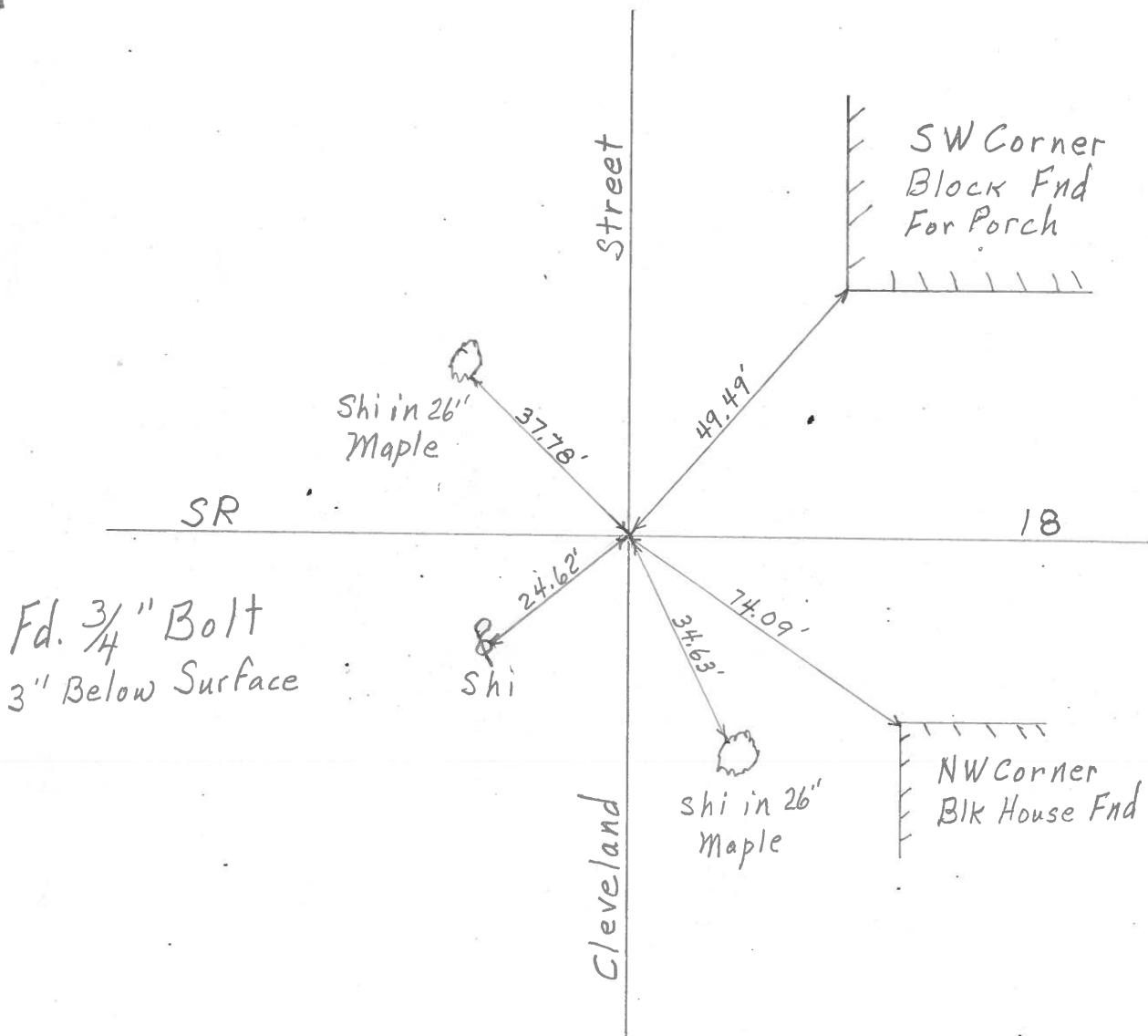
Knape

Bowers

Mead



40A



PERSONNEL TITLE PERSONNEL TITLE
 BURNSIDE _____
 SMITH _____
 HOLCOMBE _____
 ROCCHINI _____

COUNTY WOOD DATE 6-22-71
 S. R. 18 WEATHER CLEAR
 SEC. BLOOMDALE TEMP. +76°

DESCRIPTION LEFT CENTER LINE RIGHT JOB NO.

