

O.D.O.T. DISTRICT 2 SURVEY OFFICE (USE ONLY)

PERSONNEL

REFERENCE NO. 40 B

SHEET 28 OF 36

NOTES ASTON

DATE 8/10/23

ROUTE SR 18

H.C. NIESE

WEATHER CLOUDY

COUNTY WOOD

R.C. AUBLE

TEMP. 74°

TOWNSHIP BLOOM

DWG BY RHOADES

PID 95796

SECTION 35

T 3 N R 11 E

TYPE MONUMENT MAG/WASHER

ON SURFACE - ~~BELOW~~ ON

OFFSET \varnothing PAVEMENT 0.2' LT : ~~RT~~

- TO - EDGE PAVEMENT 2' W. OF \varnothing N.

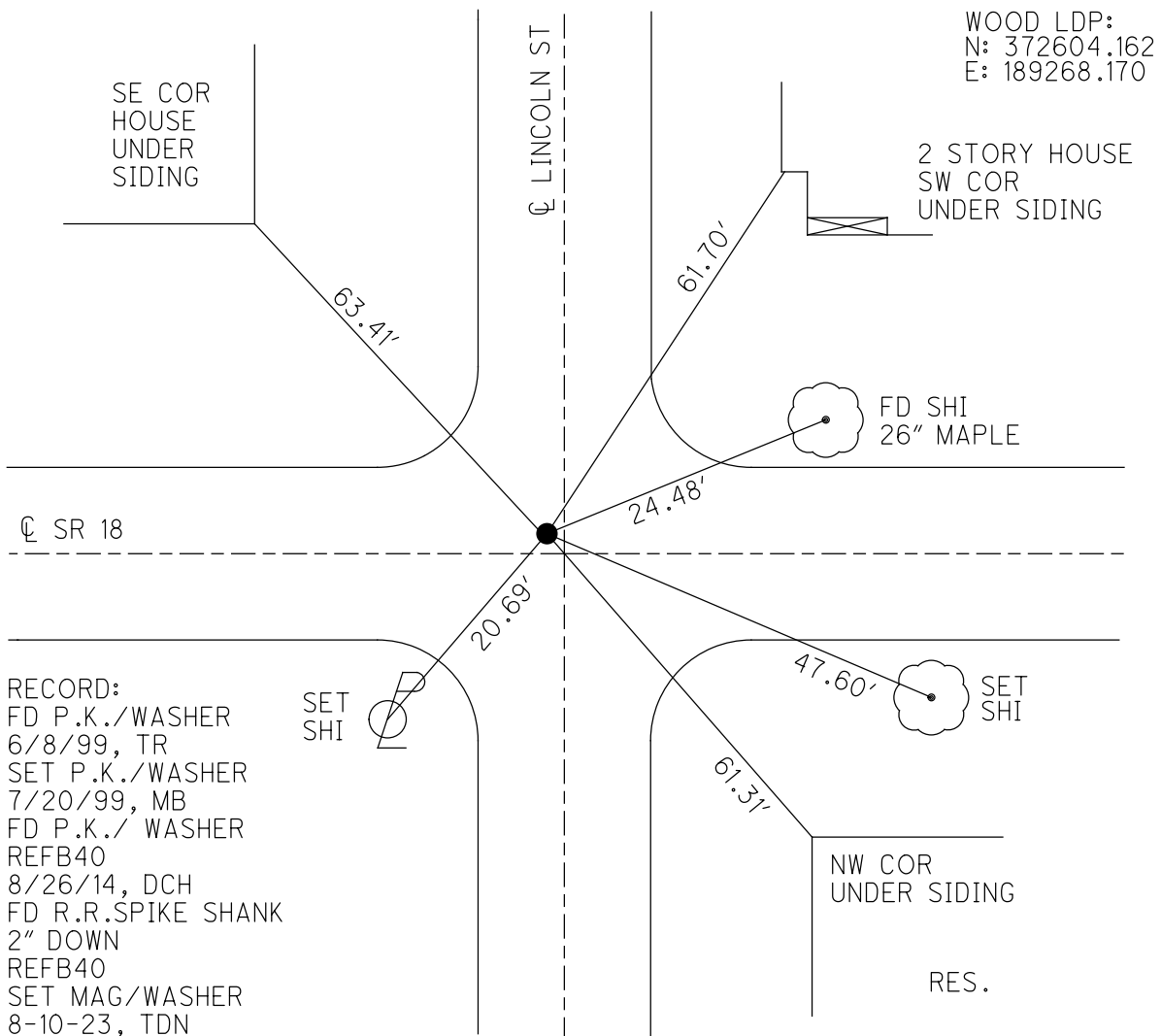
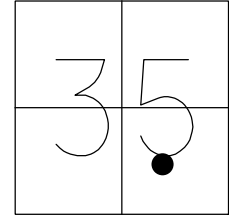
STATION: 1007+54.45

HORZ. DATUM: NAD83 (2011)

GEOID: NAVD88 2018

GRID: NORTHING: 550435.312

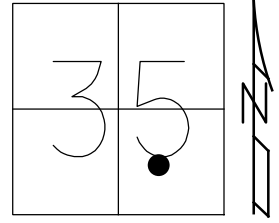
EASTING: 1677141.518



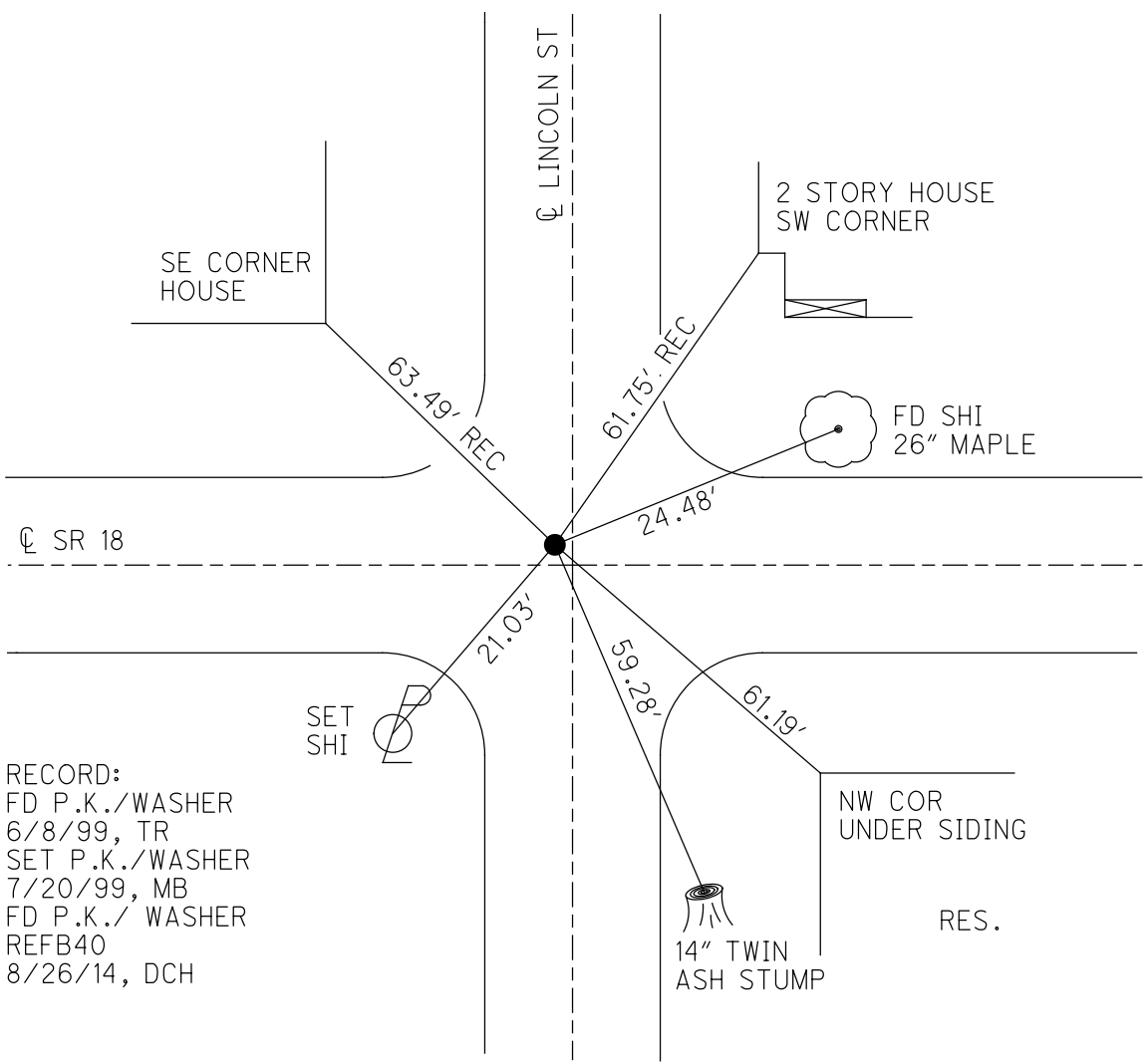
O.D.O.T. DISTRICT 2 SURVEY OFFICE (USE ONLY)

PERSONNEL _____ REFERENCE NO. 40 B SHEET 28 OF 35
 NOTES BARNHESEL DATE 6/8/99 ROUTE SR 18
 H.C. CANTERBURY WEATHER SUNNY COUNTY WOOD
 R.C. ROUSES TEMP. 90° TOWNSHIP BLOOM
 SECTION 35
 DWG BY MILLER PID 93417 T 3 N R 11 E

TYPE MONUMENT P.K./WASHER
 ON SURFACE - ~~BELOW~~ ON
 OFFSET $\text{\textcircled{C}}$ PAVEMENT 0.2' LT : ~~RT~~
- TO - EDGE PAVEMENT 2' W. OF $\text{\textcircled{C}}$ N.
 STATION: 1007+54.45



HORZ. DATUM: NAD83 (2011) GEOID: 2012A
 GRID: NORTHING: 550435.348 EASTING: 1677141.480



RECORD:
 FD P.K./WASHER
 6/8/99, TR
 SET P.K./WASHER
 7/20/99, MB
 FD P.K./WASHER
 REFB40
 8/26/14, DCH

O.D.O.T. DISTRICT 2 SURVEY OFFICE

PERSONNEL _____

REFERENCE NO. 40-B

SHEET 22 OF 29

NOTES Barometer

H.C. Cartersburg

R.C. Rausins III

DATE 6-8-93

WEATHER Sunny

TEMP. 92°

ROUTE SR 18

COUNTY Wood

TOWNSHIP Bloom

SECTION 35

T3 NR 11 E

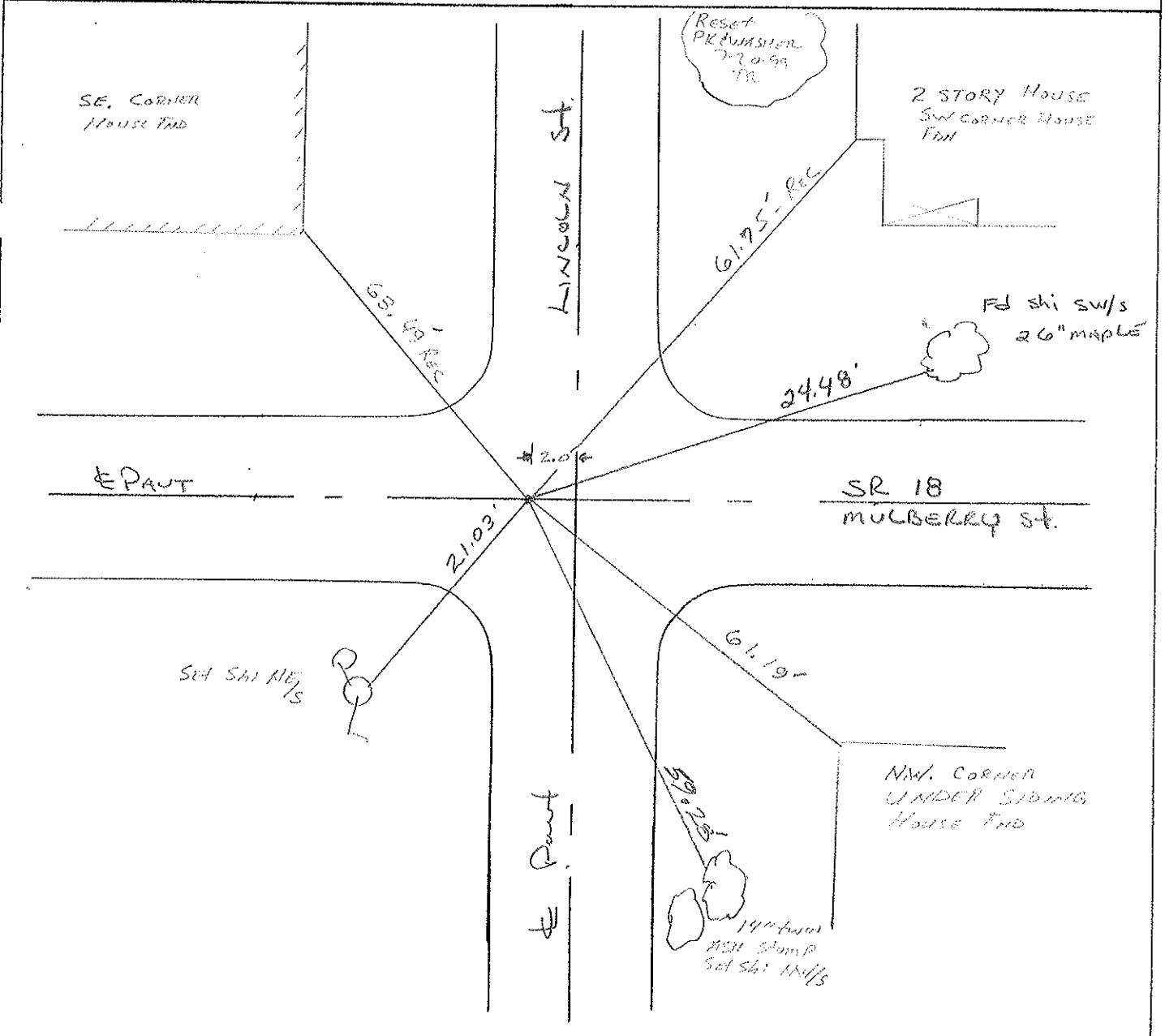
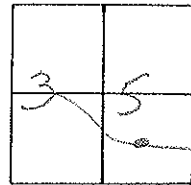
TYPE MONUMENT PK + Washer

ON SURFACE - BELOW surface

LEFT- & PAV'T. - RIGHT 0.24

- TO - EDGE PAVEMENT

S.L.M. 1007-140 ON E SOUTH



O.D.O.T. DISTRICT 2 SURVEY OFFICE

PERSONNEL

REFERENCE NO. 40-B

SHEET OF

NOTES Hoffman

H.C. BARWISSEL

DATE 5-14-86

ROUTE SR 18

R.C. LOEHRKE

WEATHER Cloudy

COUNTY Wood

TEMP. 65°

TOWNSHIP Bloom

SECTION 35

T.3 N R.11 E

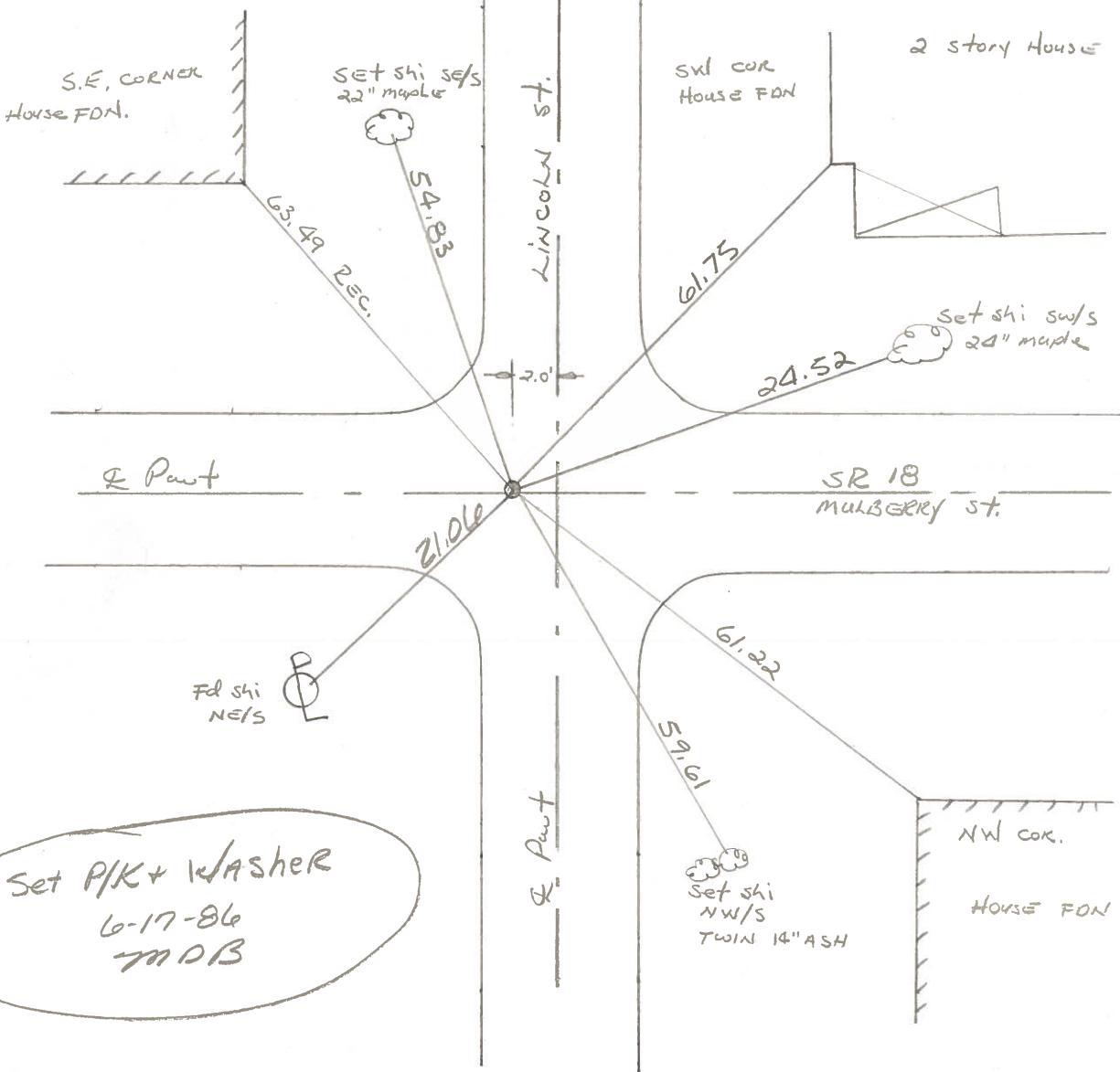
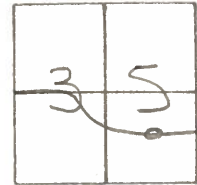
TYPE MONUMENT SMALL R.R. SPIKE

ON SURFACE - ~~BELOW~~ yes

~~LEFT- & PAV'T. - RIGHT~~ yes

 TO EDGE PAVEMENT

S.L.M. 1106 + 92



Set PK + Washer
 6-17-86
 M.D.B.

County Wood S.R. 18

Date 5-7-1979

Township Bloom

Weather Clear

Section Bloomdale Corp

Temp. 70°

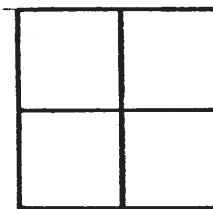
T3N, R1E

Personnel Smith

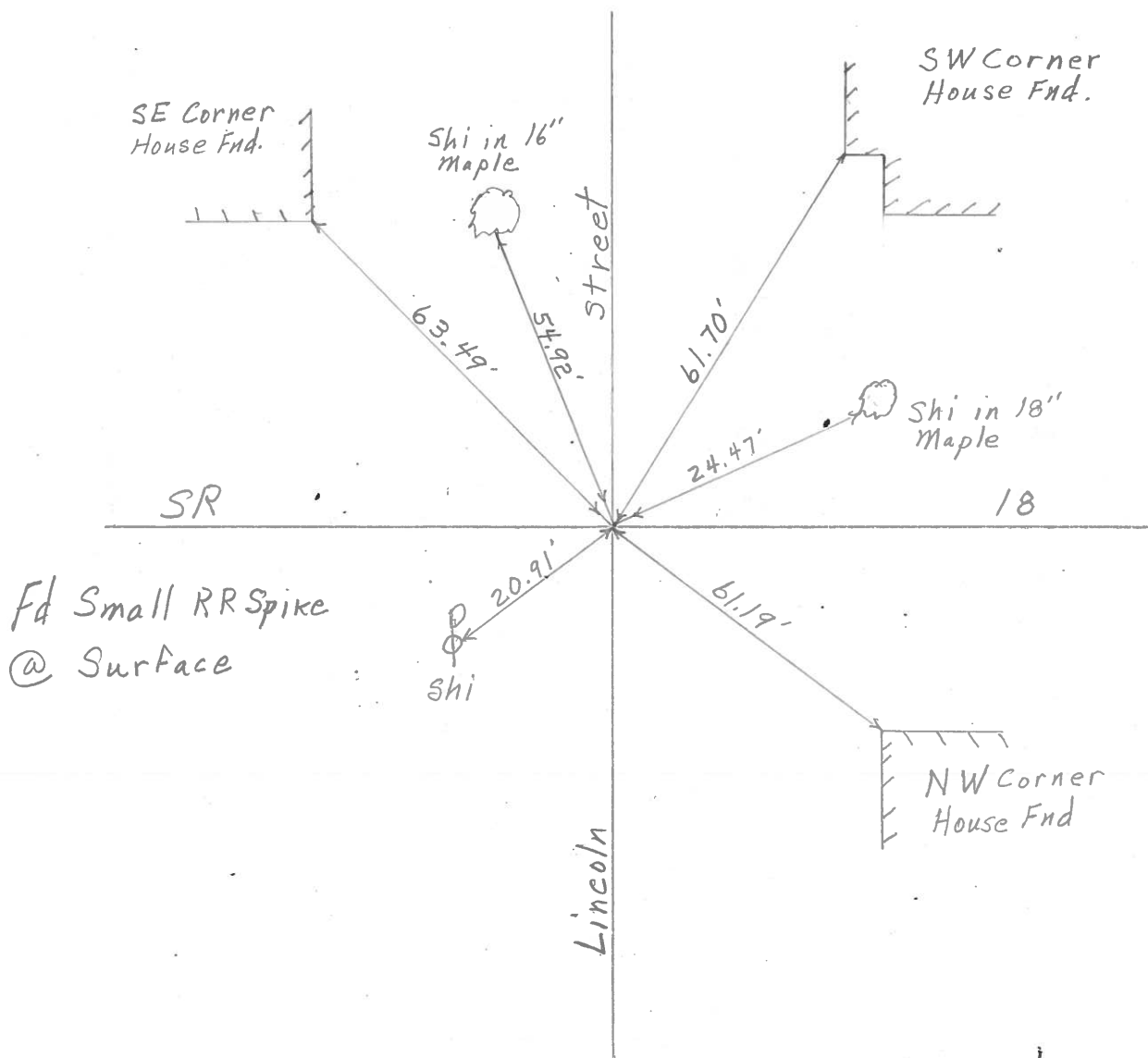
Knape

Bowers

Mead



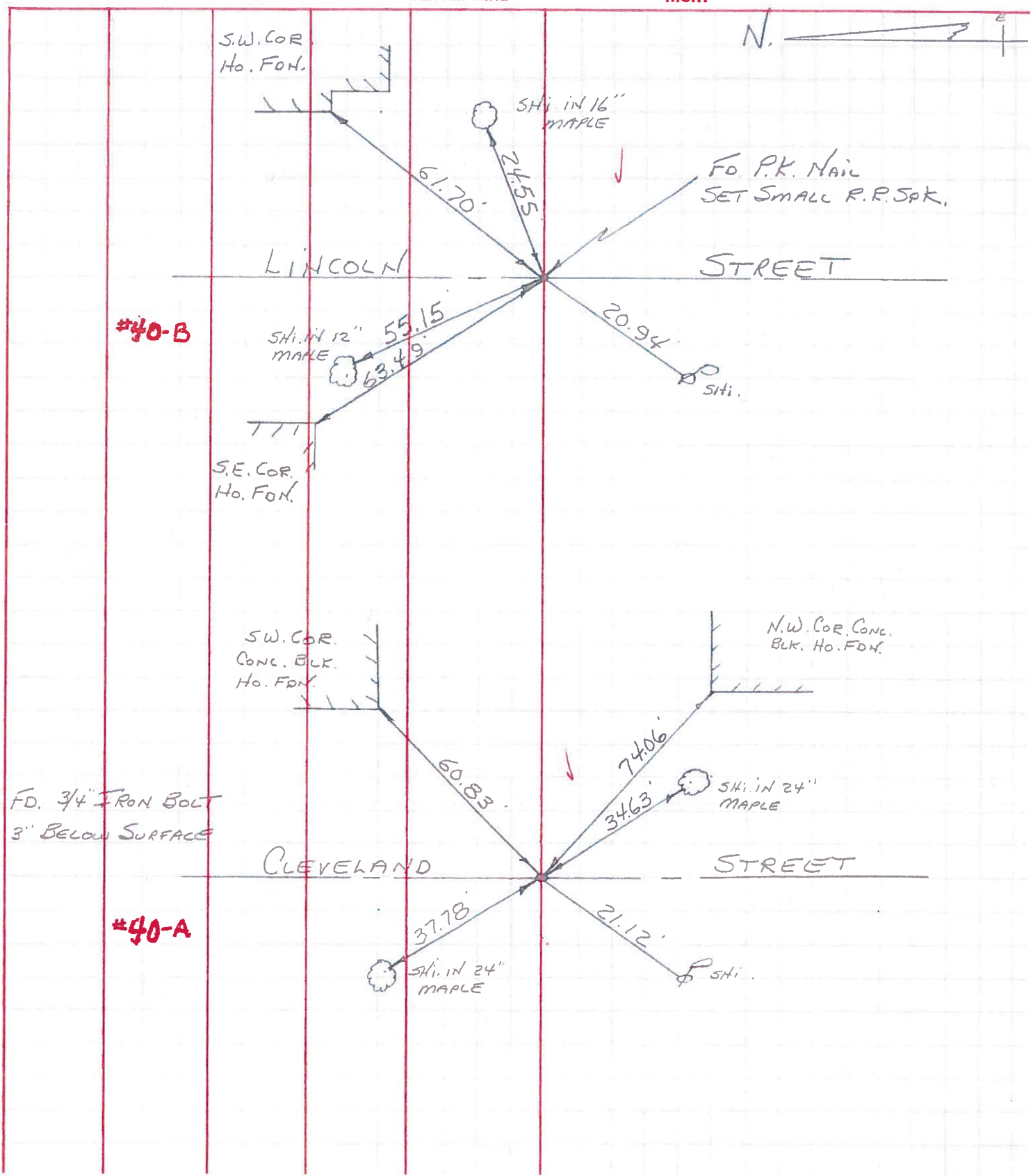
406



PERSONNEL TITLE PERSONNEL TITLE
 BURNSIDE _____
 SMITH _____
 HOLCOMBE _____
 ROCCHINI _____

COUNTY WOOD DATE 6-22-71
 S. R. 18 WEATHER CLEAR
 SEC. BLOOMDALE TEMP. +76°

DESCRIPTION _____ LEFT CENTER LINE RIGHT JOB NO. _____



#40-B

#40-A

FD. 3/4" IRON BOLT
3" BELOW SURFACE

