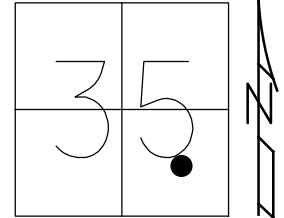


O.D.O.T. DISTRICT 2 SURVEY OFFICE (USE ONLY)

PERSONNEL \_\_\_\_\_ REFERENCE NO. 40 C SHEET 29 OF 36  
 NOTES ASTON DATE 8/10/23 ROUTE SR 18  
 H.C. NIESE WEATHER CLOUDY COUNTY WOOD  
 R.C. AUBLE TEMP. 74° TOWNSHIP BLOOM  
 DWG BY RHOADES PID 95796 SECTION 35  
 T 3 N R 11 E

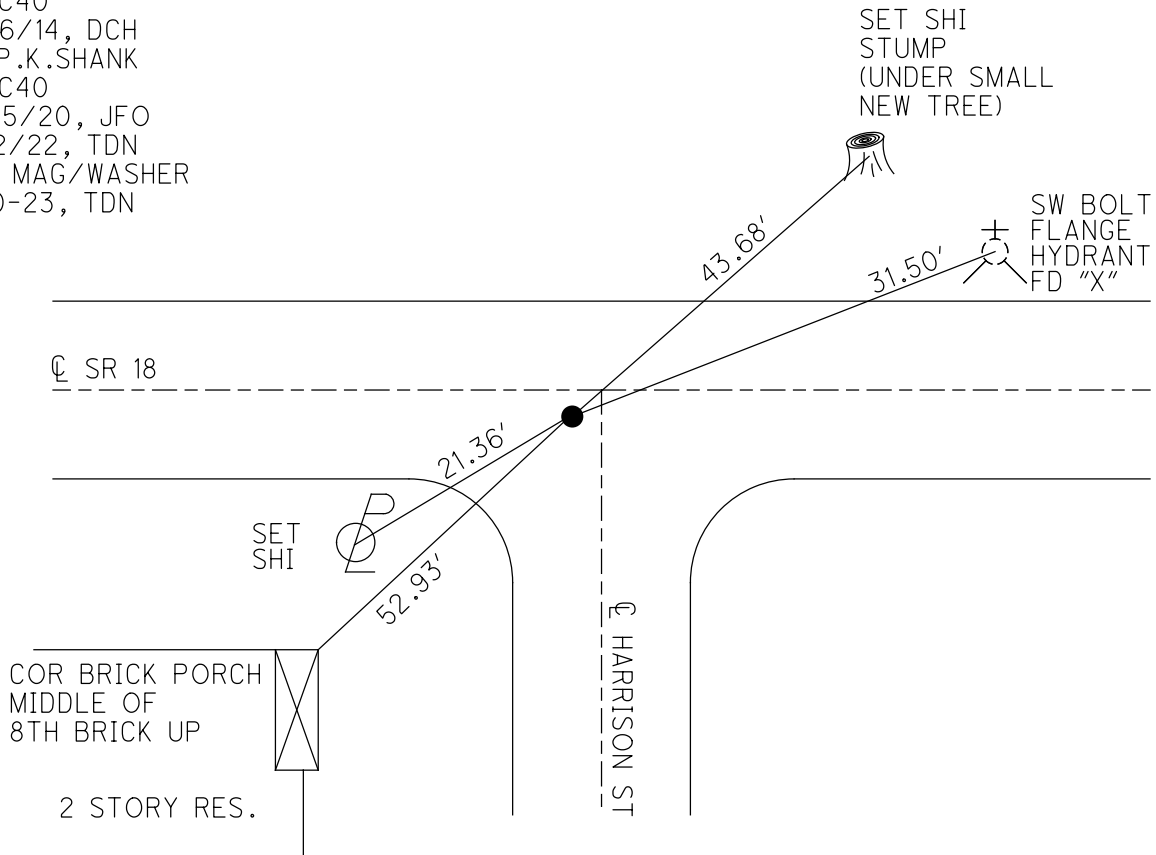
TYPE MONUMENT MAG/WASHER  
 ON SURFACE - ~~BELOW~~ ON  
 OFFSET 10.8  $\varnothing$  PAVEMENT ON LT : ~~RT~~  
TO LT EDGE PAVEMENT  
 STATION: 1011+24.92



HORIZ.DATUM: NAD83 (2011) GEOID: NAVD88 2018  
 GRID: NORTHING: 550424.771 EASTING: 1677511.845

RECORD:  
 FD P.K./WASHER  
 6/8/99, TR  
 SET P.K./WASHER  
 7/20/99, MB  
 FD P.K./ WASHER  
 REFC40  
 8/26/14, DCH  
 FD P.K.SHANK  
 REFC40  
 11/05/20, JFO  
 4/12/22, TDN  
 SET MAG/WASHER  
 8-10-23, TDN

WOOD LDP:  
 N: 372598.505  
 E: 189638.636



O.D.O.T. DISTRICT 2 SURVEY OFFICE (USE ONLY)

PERSONNEL

REFERENCE NO. 40 C

SHEET 29 OF 35

NOTES BARNHEISEL

DATE 6/8/99

ROUTE SR 18

H.C. CANTERBURY

WEATHER SUNNY

COUNTY WOOD

R.C. ROUSES

TEMP. 90°

TOWNSHIP BLOOM

SECTION 35

DWG BY MILLER

PID 93417

T 3 N R 11 E

TYPE MONUMENT P.K./WASHER

ON SURFACE - ~~BELOW~~ ON

OFFSET  $\odot$  PAVEMENT 0.5' LT : ~~RT~~

10.8 TO LT EDGE PAVEMENT

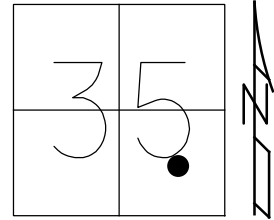
STATION: 1011+24.92

HORZ. DATUM: NAD83 (2011)

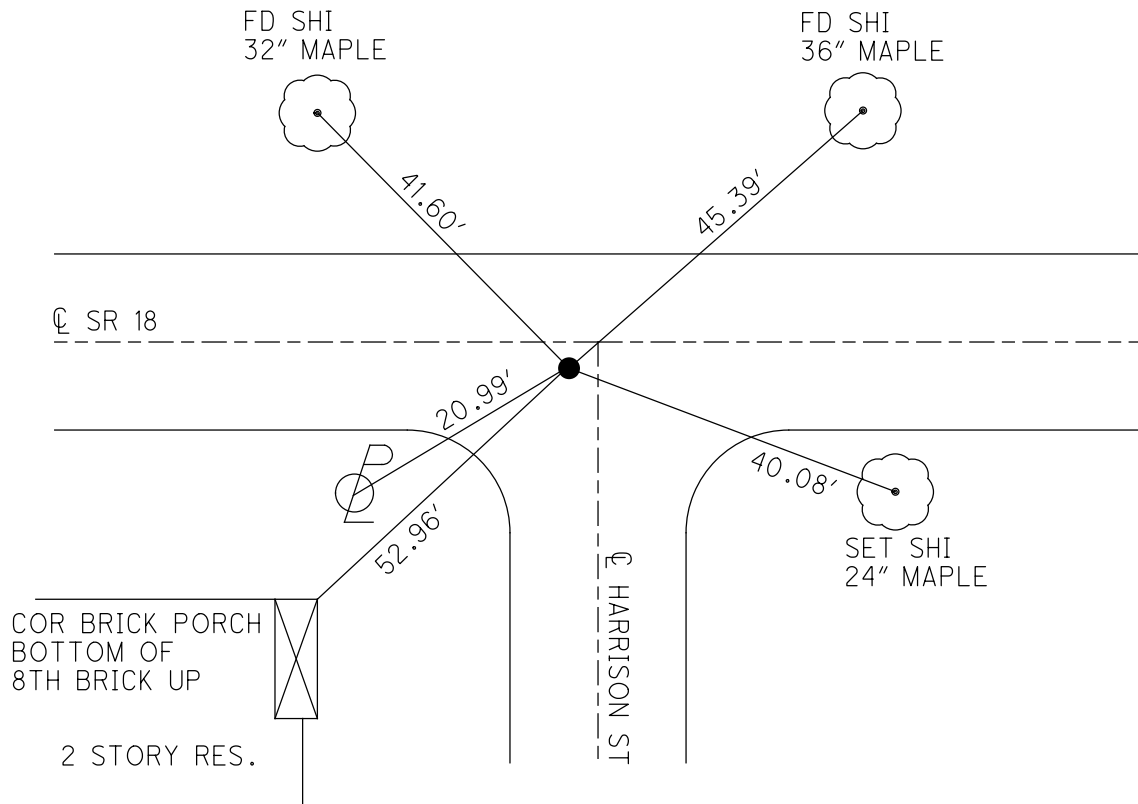
GEOID: 2012A

GRID: NORTHING: 550424.751

EASTING: 1677511.807



RECORD:  
 FD P.K./WASHER  
 6/8/99, TR  
 SET P.K./WASHER  
 7/20/99, MB  
 FD P.K./ WASHER  
 REFC40  
 8/26/14, DCH



# O.D.O.T. DISTRICT 2 SURVEY OFFICE

PERSONNEL \_\_\_\_\_

REFERENCE NO. 40-c

SHEET 23 OF 29

NOTES Bardhisel

H.C. Canterbury

R.C. Rousar III

DATE 6.8.99

WEATHER Sunny

TEMP. 70°

ROUTE SR 18

COUNTY Wood

TOWNSHIP Bloom

SECTION 35

T3 N R 11 E

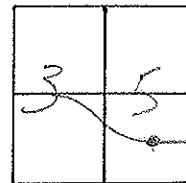
TYPE MONUMENT PK E WASH

ON SURFACE - BELOW Surface

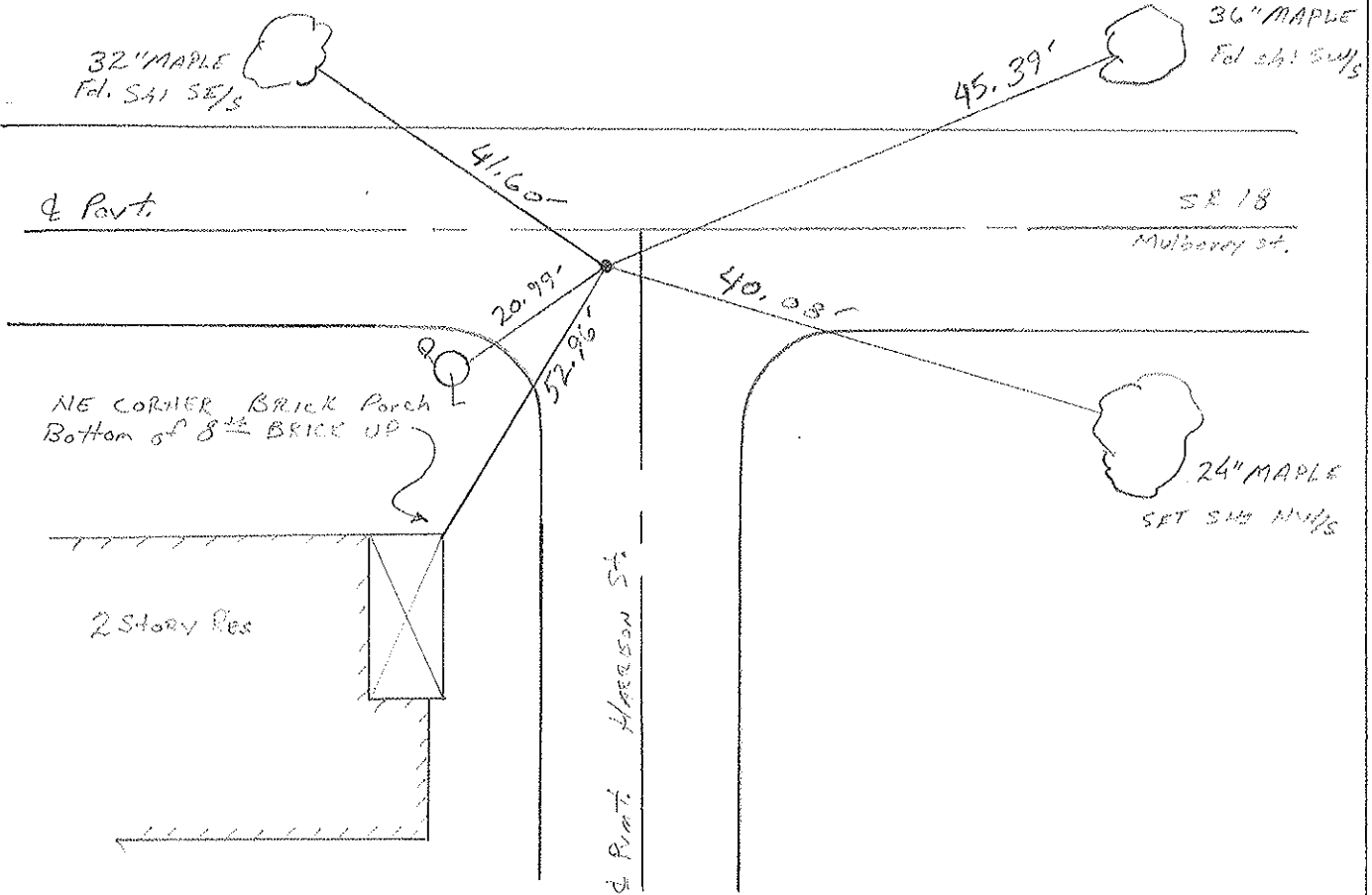
LEFT - Q PAV'T. - RIGHT 0.5'

10.8 TO LT EDGE PAVEMENT

S.L.M. 10/1/10 ON E South



Rec'd  
Distribution  
7.20.99  
JR



# O.D.O.T. DISTRICT 2 SURVEY OFFICE

PERSONNEL

REFERENCE NO. 40-C

SHEET      OF     

NOTES Hoffman

H.C. BARNHISEL

DATE 5-14-86

ROUTE SR 18

R.C. KOSHKKE

WEATHER Cloudy

COUNTY WOOD

TEMP. 65°

TOWNSHIP Bloom

SECTION 35

T 3 N R 11 E

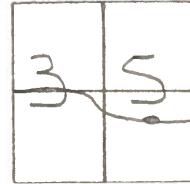
TYPE MONUMENT SMALL RR SPIKE

ON SURFACE - ~~BELOW~~ yes

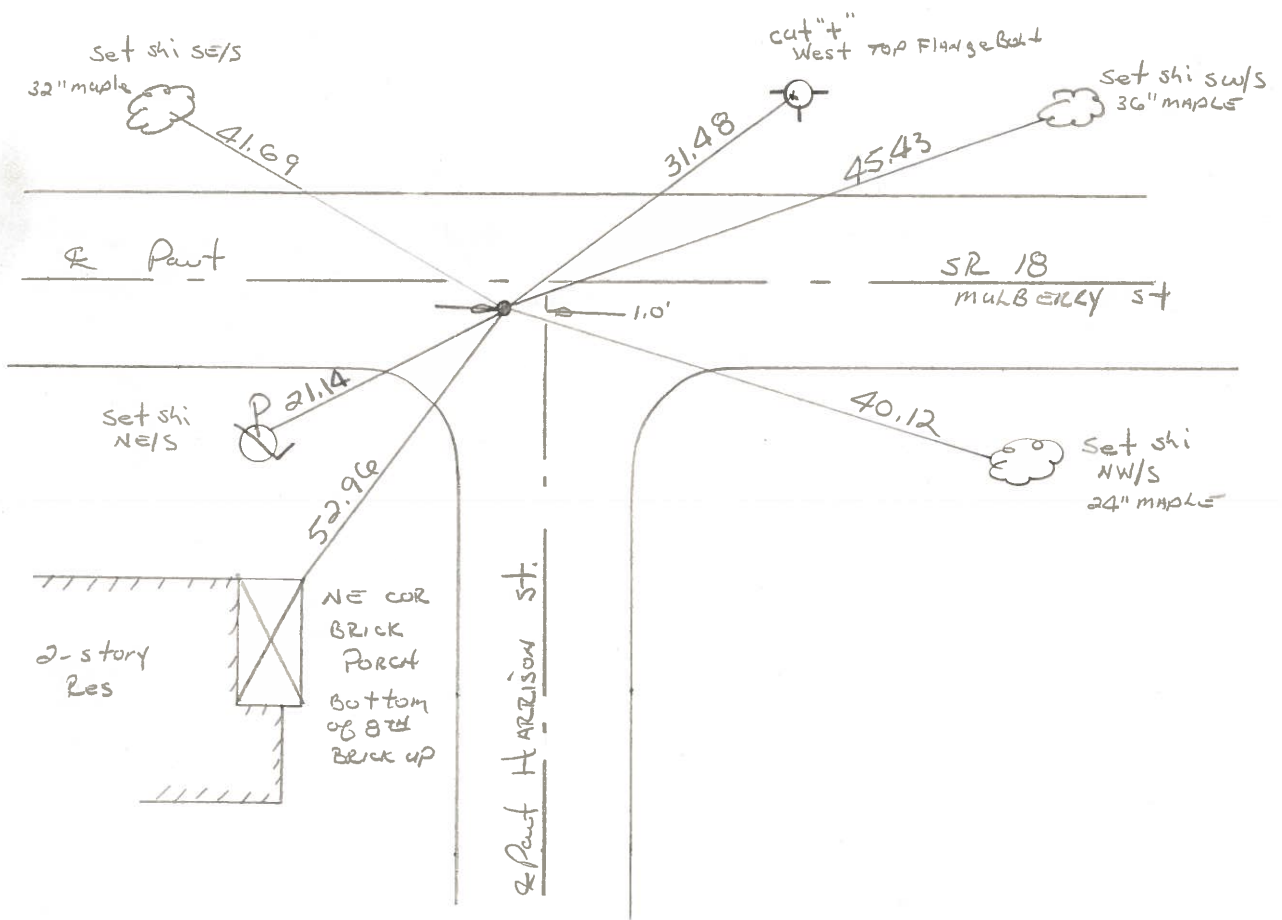
LEFT - & PAV'T. - RIGHT 1.0'

11.0 TO LT EDGE PAVEMENT

S.L.M. 1010 + 62



Set P/K + Washer  
 6-17-84  
 MOB



County Wood S.R. 18

Date 5-7-1979

Township Bloom

Weather Clear

Section Bloomdale Corp

Temp. 72°

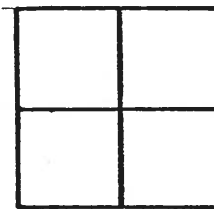
T3N, R1E

Personnel Smith

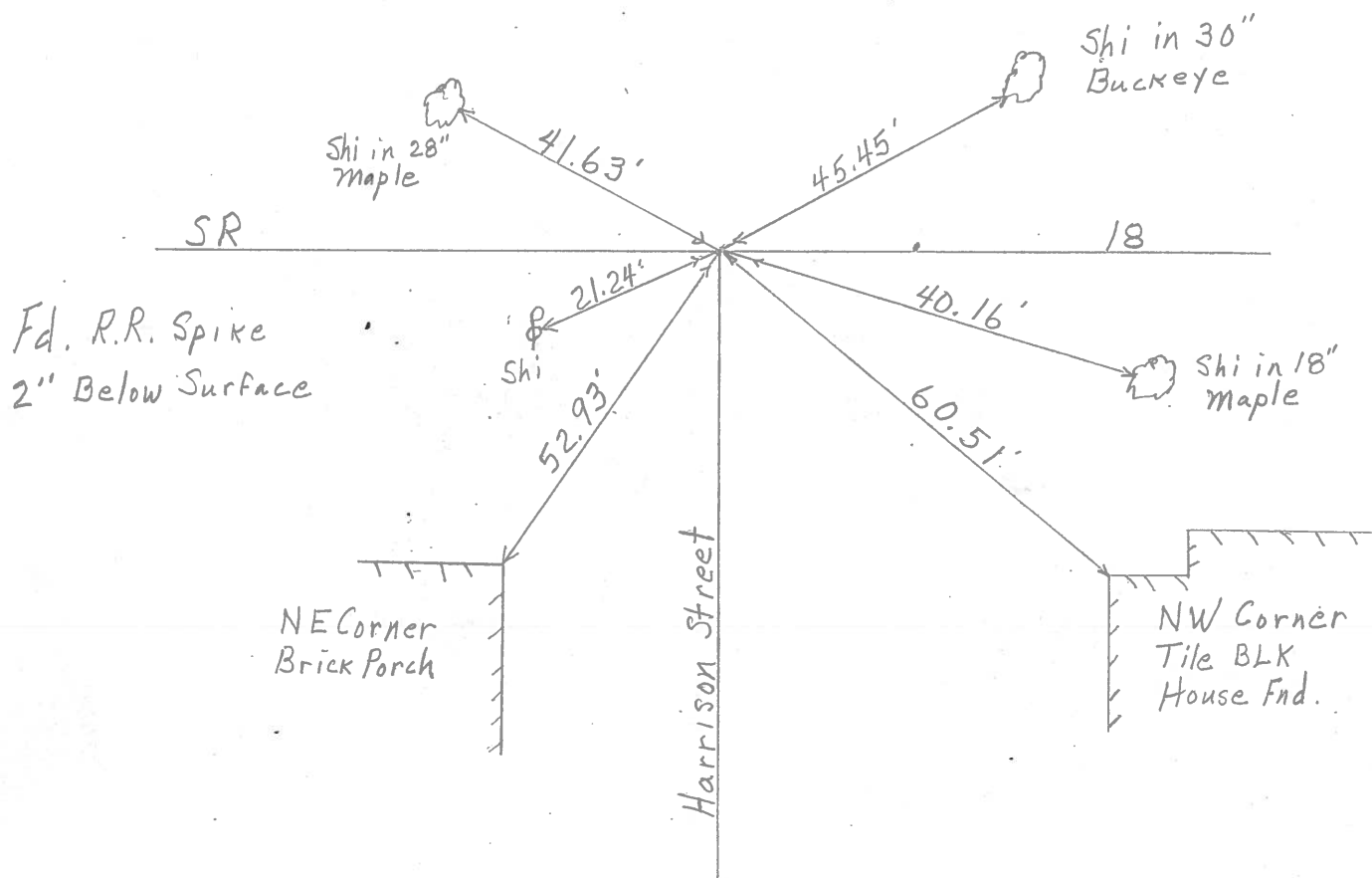
Knape

Bowers

Mead



400



PERSONNEL TITLE PERSONNEL TITLE

COUNTY Wood DATE 6-22-71

S. R. 18 WEATHER CLEAR

SEC. Bloomdale, O TEMP. +76

DESCRIPTION LEFT CENTER LINE RIGHT JOB NO.

