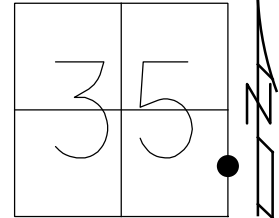


O.D.O.T. DISTRICT 2 SURVEY OFFICE (USE ONLY)

PERSONNEL \_\_\_\_\_ REFERENCE NO. 41 SHEET 31 OF 36  
 NOTES ASTON DATE 8/10/23 ROUTE SR 18  
 H.C. NIESE WEATHER CLOUDY COUNTY WOOD  
 R.C. AUBLE TEMP. 74° TOWNSHIP BLOOM  
 DWG BY RHOADES PID 95796 SECTION 35  
 T 3 N R 11 E

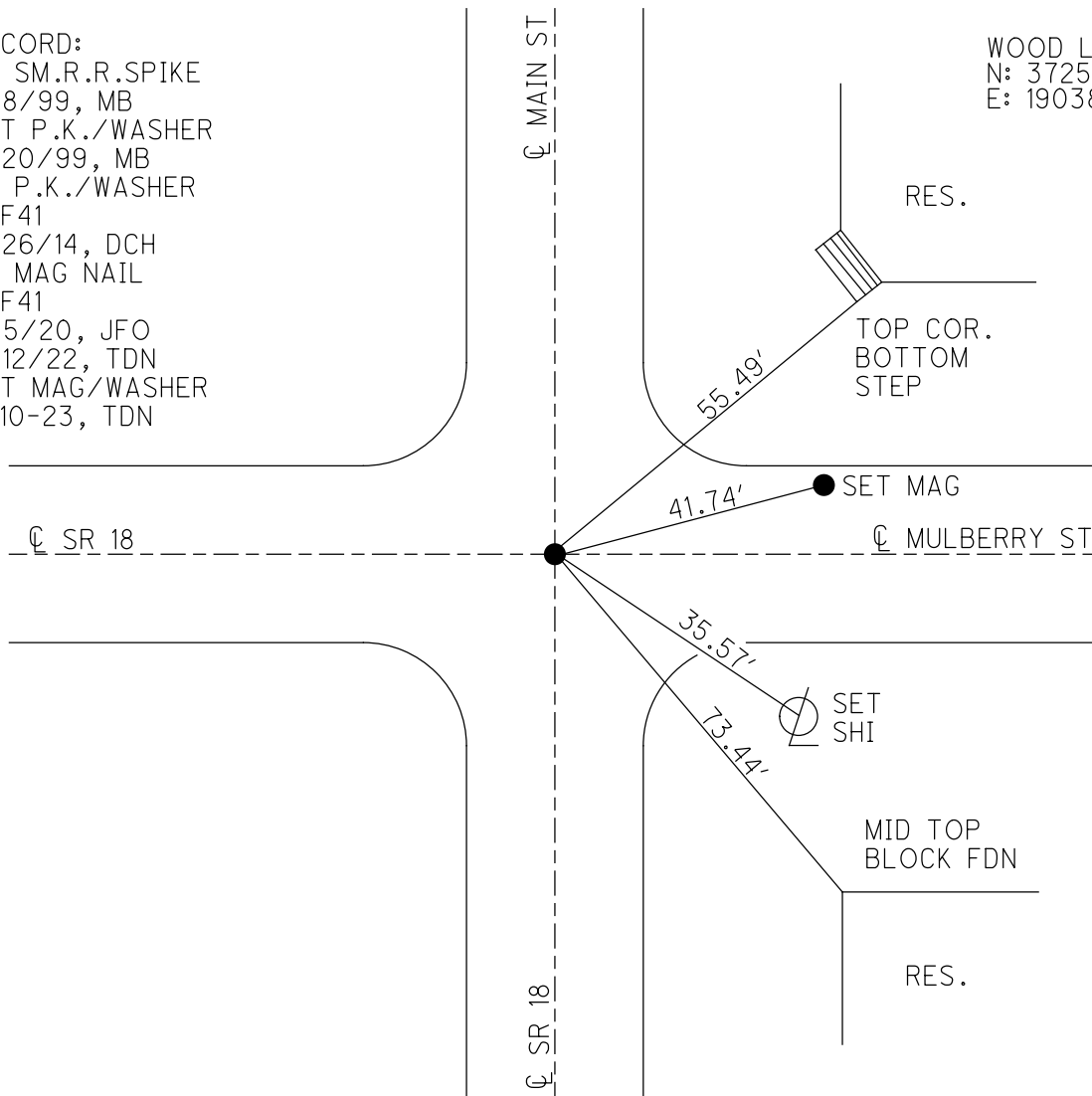
TYPE MONUMENT MAG/WASHER  
 ON SURFACE - ~~BELOW~~ ON  
 OFFSET  $\varnothing$  PAVEMENT ON LT : RT  
5' TO LT EDGE PAVEMENT  
 STATION: 1018+73.65



HORZ. DATUM: NAD83 (2011) GEOID: NAVD88 2018  
 GRID: NORTHING: 550402.709 EASTING: 1678261.396

RECORD:  
 FD SM.R.R.SPIKE  
 6/8/99, MB  
 SET P.K./WASHER  
 7/20/99, MB  
 FD P.K./WASHER  
 REF41  
 8/26/14, DCH  
 FD MAG NAIL  
 REF41  
 11/5/20, JFO  
 4/12/22, TDN  
 SET MAG/WASHER  
 8-10-23, TDN

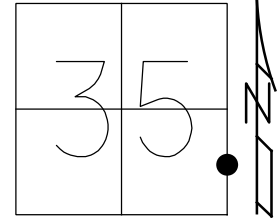
WOOD LDP:  
 N: 372586.328  
 E: 190388.476



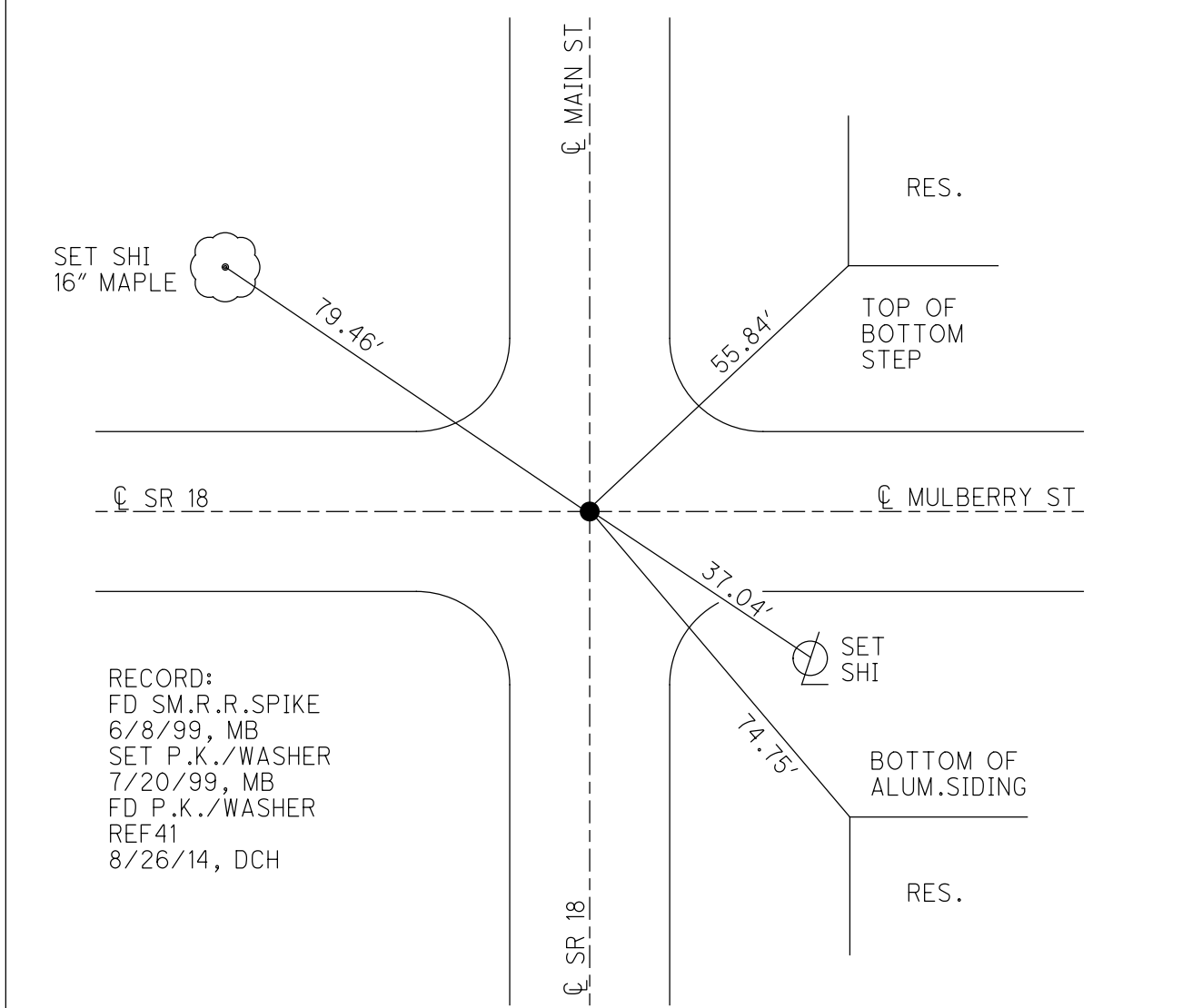
O.D.O.T. DISTRICT 2 SURVEY OFFICE (USE ONLY)

PERSONNEL \_\_\_\_\_ REFERENCE NO. 41 SHEET 31 OF 35  
 NOTES BARNHISEL DATE 6/8/99 ROUTE SR 18  
 H.C. CANTERBURY WEATHER SUNNY COUNTY WOOD  
 R.C. ROUSES TEMP. 90° TOWNSHIP BLOOM  
 DWG BY RHOADES PID 93417 SECTION 35  
 T 3 N R 11 E

TYPE MONUMENT SM.R.R.SPIKE  
~~ON SURFACE~~ - BELOW 2"  
 OFFSET  $\varnothing$  PAVEMENT ON LT : RT  
5' TO LT EDGE PAVEMENT  
 STATION: 1018+73.65



HORIZ.DATUM: NAD83 (2011) GEOID: 2012A  
 GRID: NORTHING: 550403.665 EASTING: 1678260.240



RECORD:  
 FD SM.R.R.SPIKE  
 6/8/99, MB  
 SET P.K./WASHER  
 7/20/99, MB  
 FD P.K./WASHER  
 REF 41  
 8/26/14, DCH

# O.D.O.T. DISTRICT 2 SURVEY OFFICE

PERSONNEL

REFERENCE NO. 41

SHEET 25 OF 29

NOTES Barthel

H.C. Canterbury

R.C. Rouss 111

DATE 6-8-99

WEATHER Sunny

TEMP. 90°

ROUTE SR 18

COUNTY Wood

TOWNSHIP Ploom

SECTION \_\_\_\_\_

TE NR 11E

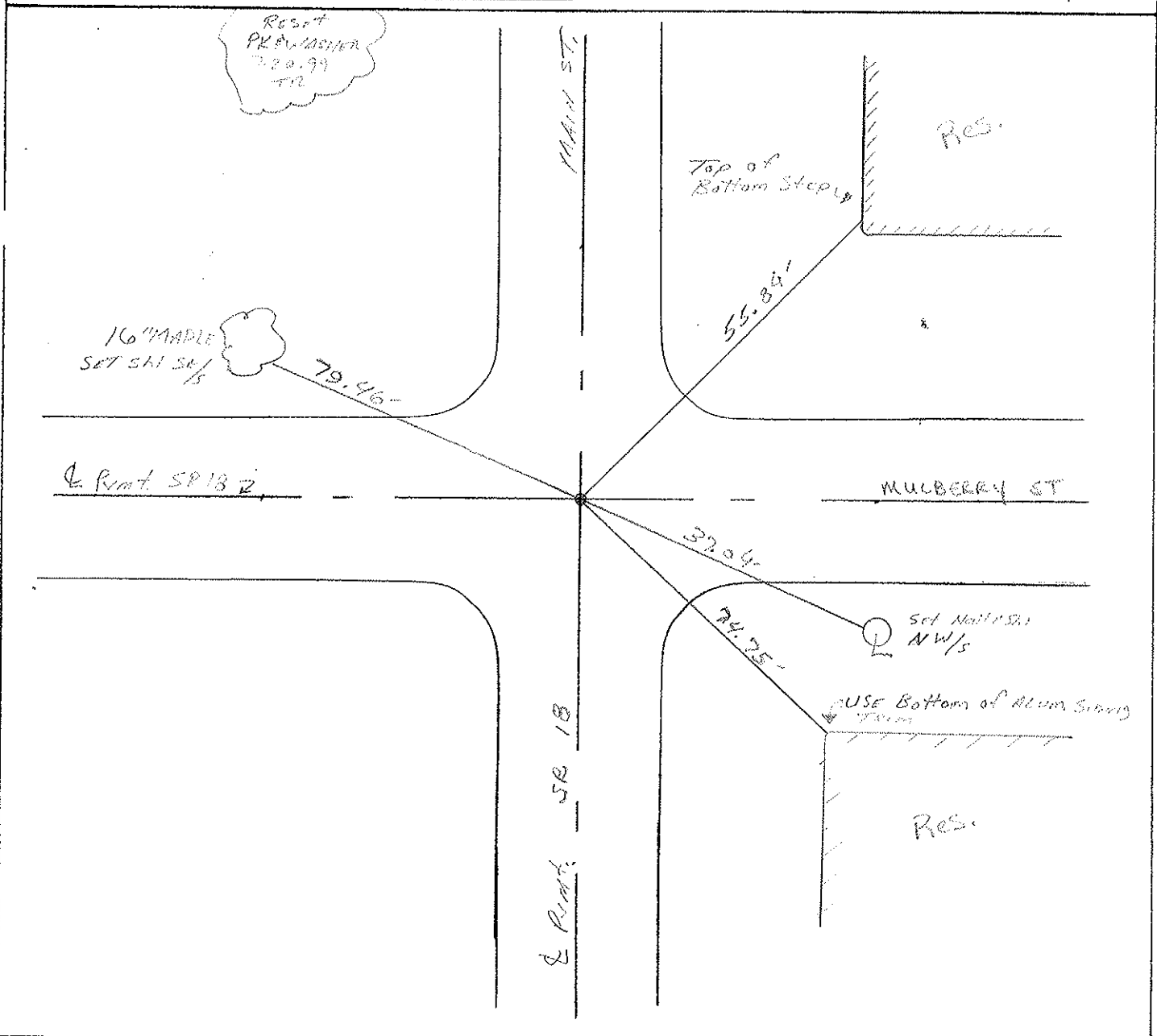
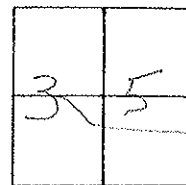
TYPE MONUMENT Small RR spike

~~ON SURFACE~~ - BELOW 2" down

~~LEFT - C. PAV'T. - RIGHT~~ & Both Points

~~- TO -~~ EDGE PAVEMENT

S.L.M. 1018465



# O.D.O.T. DISTRICT 2 SURVEY OFFICE

PERSONNEL \_\_\_\_\_

REFERENCE NO. 41

SHEET \_\_\_\_\_ OF \_\_\_\_\_

NOTES Hoffman

H.C. BARNHISEL

R.C. LOSHKICE

DATE 5-14-86

WEATHER Lt. Rain

TEMP. 70°

ROUTE SR 18

COUNTY WOOD

TOWNSHIP Bloom

SECTION 35

T.3 N R 11 E

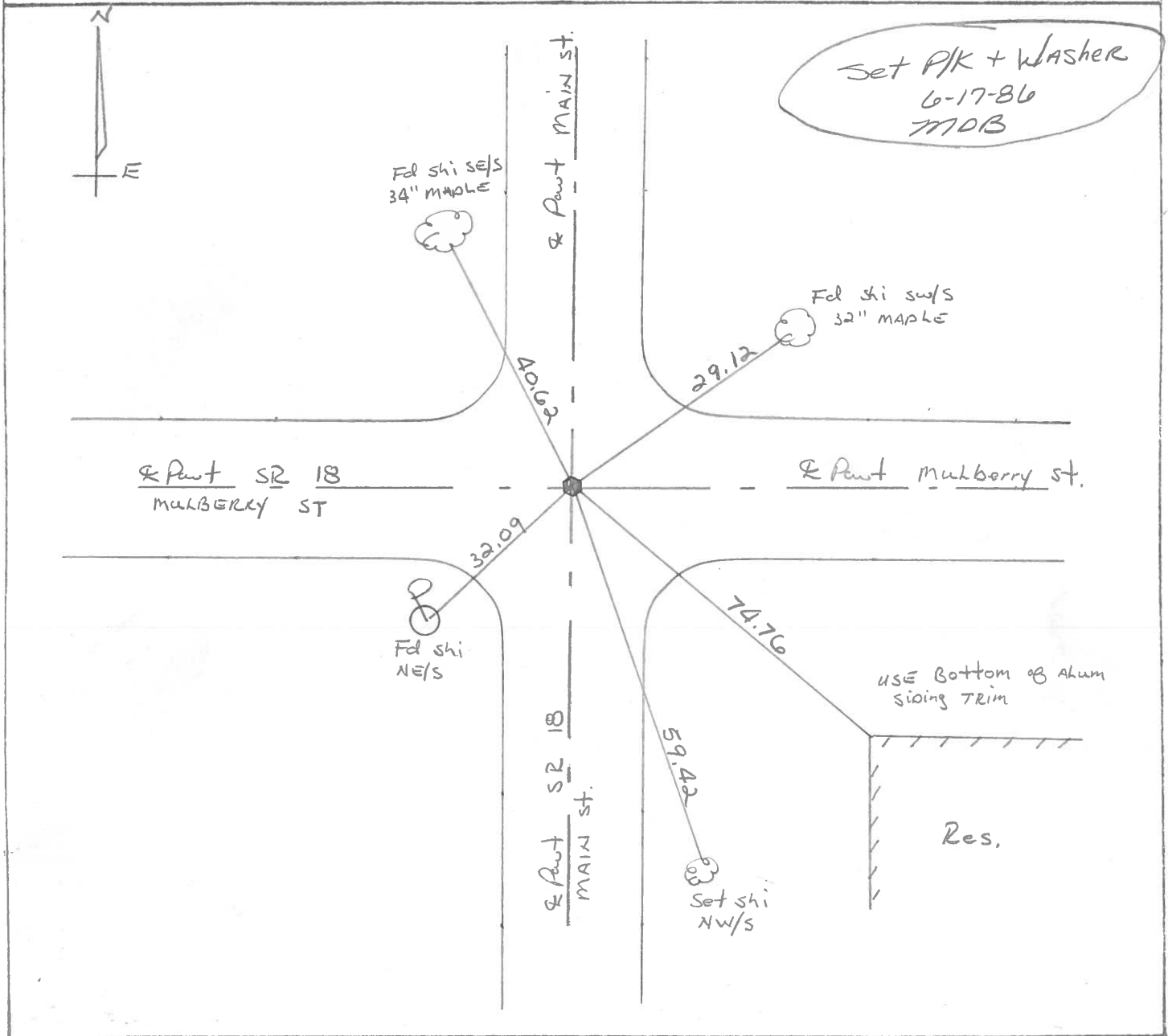
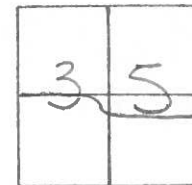
TYPE MONUMENT SMALL RR SPIKE

ON SURFACE - ~~BELOW~~ yes

~~LEFT - & PAV'T.~~ RIGHT BOTH Paints

TO EDGE PAVEMENT

S.L.M. 1018 + 10



County Wood S.R. 18

Date 5-7-1979

Township Bloom

Weather Clear

Section Bloomdale Corp

Temp. 72°

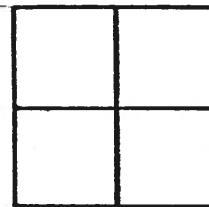
T3N, R1E

Personnel Smith

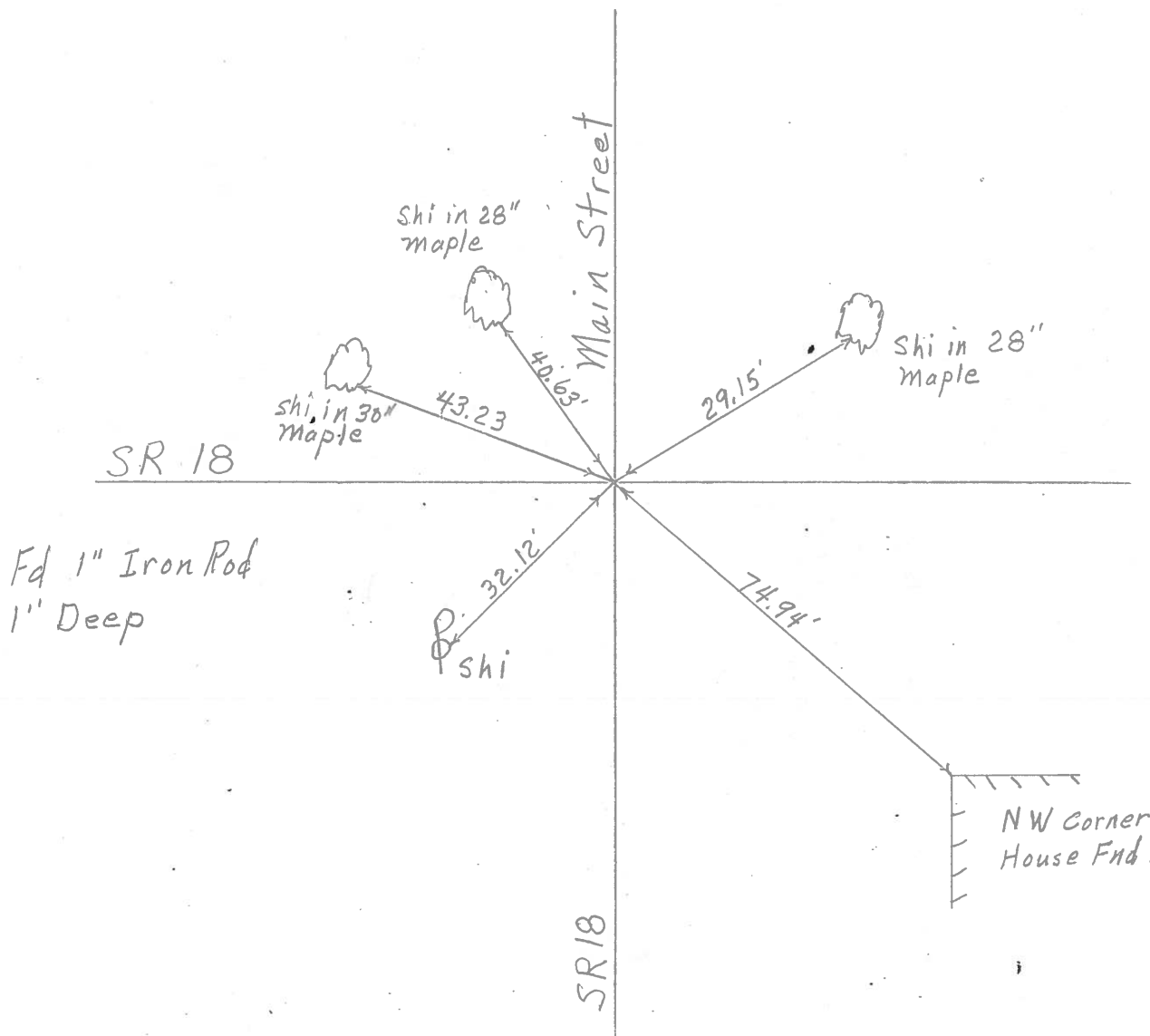
Knape

Bowers

Mead



41



PERSONNEL TITLE PERSONNEL TITLE

COUNTY Wood DATE 6-22-71

S. R. 18 WEATHER CLEAR

SEC. Bloomdale, O TEMP. +76

DESCRIPTION LEFT CENTER LINE RIGHT JOB NO.

