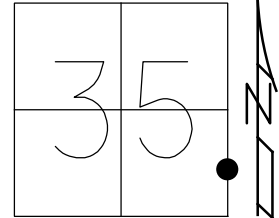


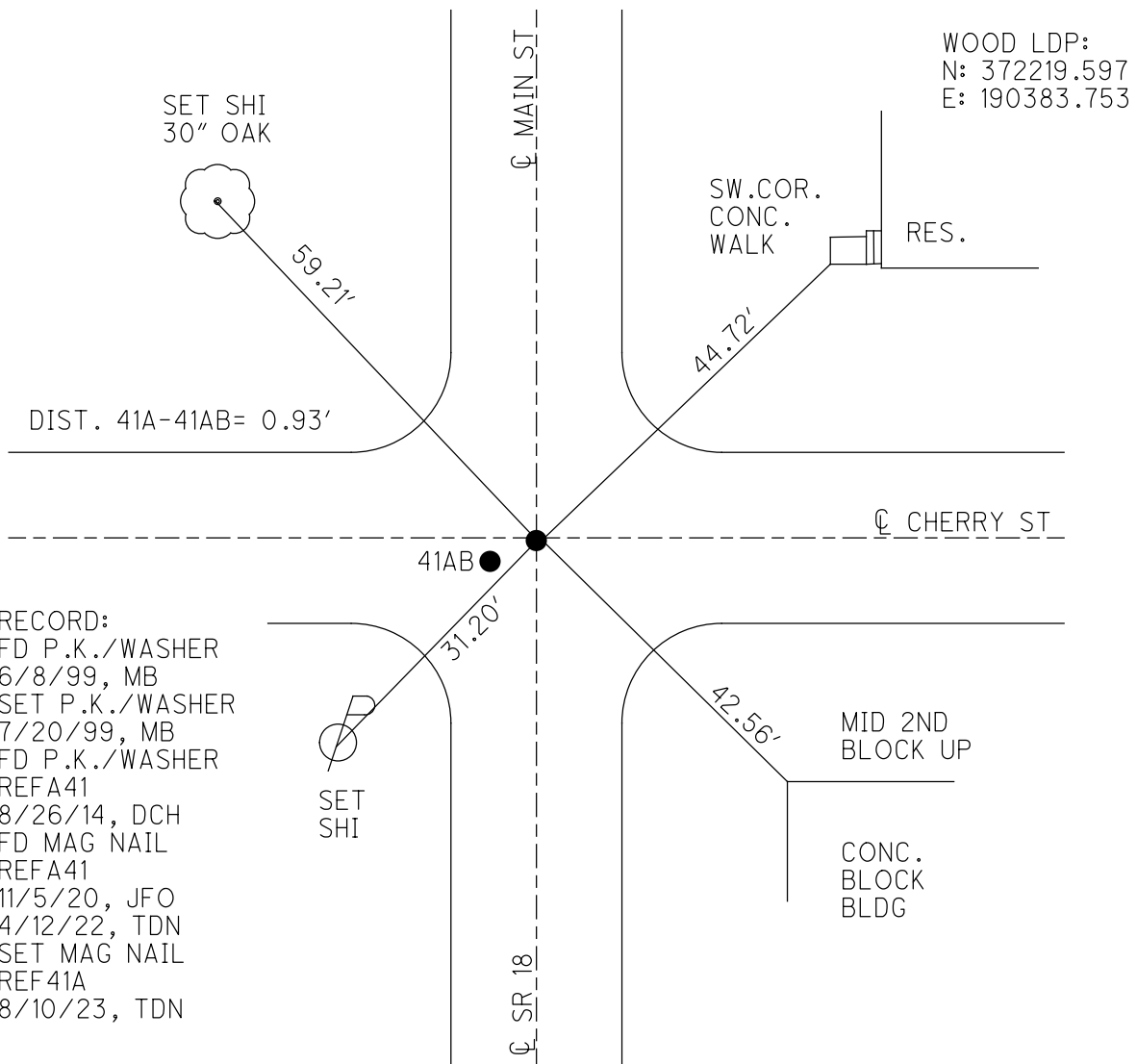
O.D.O.T. DISTRICT 2 SURVEY OFFICE (USE ONLY)

PERSONNEL _____ REFERENCE NO. 41 A SHEET 32 OF 36
 NOTES ASTON DATE 8/10/23 ROUTE SR 18
 H.C. NIESE WEATHER CLOUDY COUNTY WOOD
 R.C. AUBLE TEMP. 74° TOWNSHIP BLOOM
 DWG BY RHOADES PID 95796 SECTION 35
 T 3 N R 11 E

TYPE MONUMENT MAG/WASHER
 ON SURFACE - ~~BELOW~~ ON
 OFFSET \odot PAVEMENT ON LT : RT
- TO - EDGE PAVEMENT
 STATION: 1022+41.61



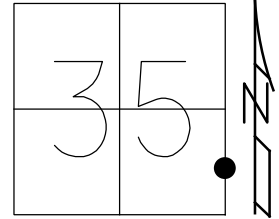
HORZ. DATUM: NAD83 (2011) GEOID: NAVD88 2018
 GRID: NORTHING: 550036.103 EASTING: 1678251.838



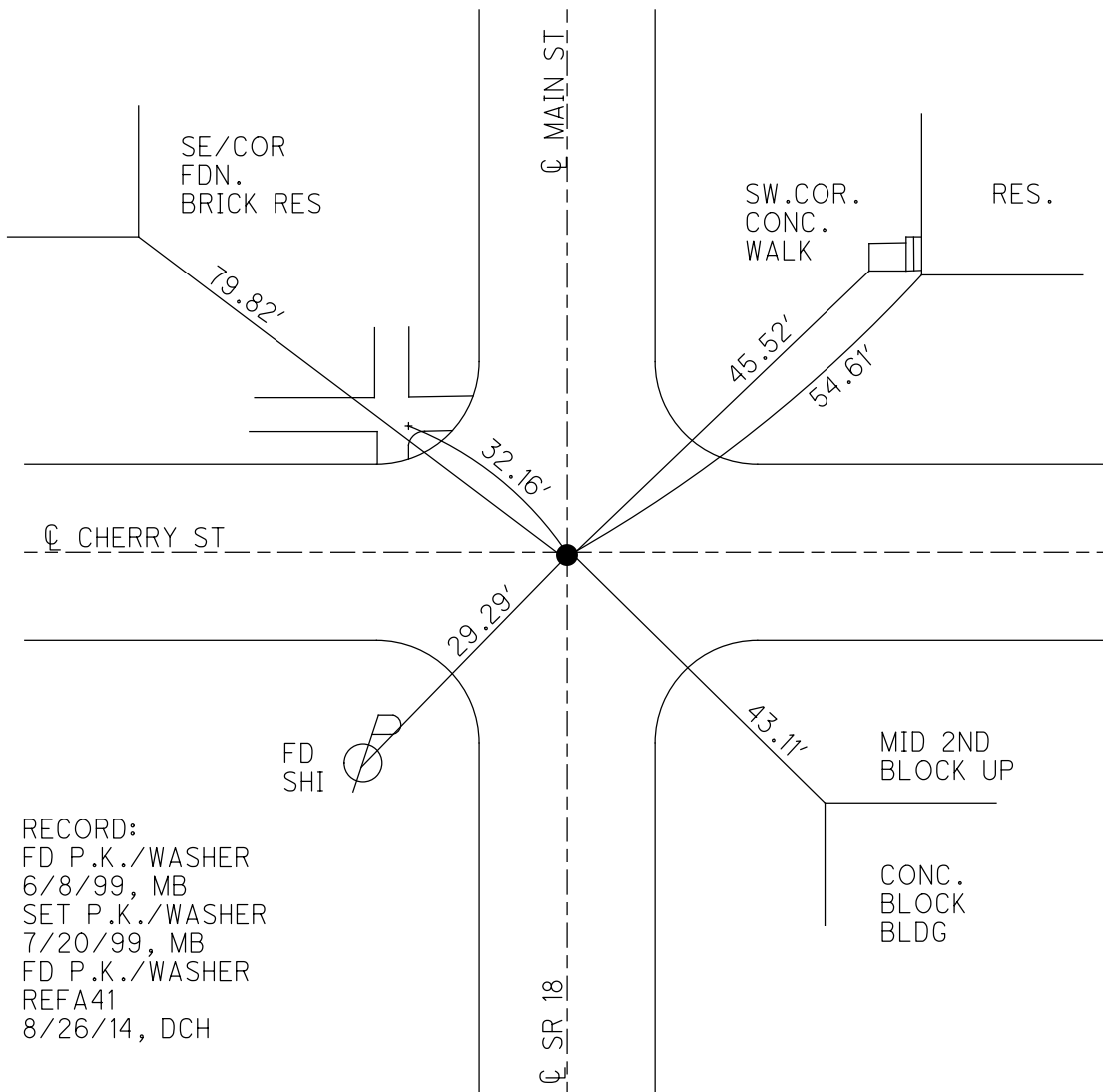
O.D.O.T. DISTRICT 2 SURVEY OFFICE (USE ONLY)

PERSONNEL _____ REFERENCE NO. 41 A SHEET 32 OF 35
 NOTES BARNHESEL DATE 6/8/99 ROUTE SR 18
 H.C. CANTERBURY WEATHER SUNNY COUNTY WOOD
 R.C. ROUSES TEMP. 90° TOWNSHIP BLOOM
 DWG BY RHOADES PID 93417 SECTION 35
 T 3 N R 11 E

TYPE MONUMENT P.K./WASHER
 ON SURFACE - ~~BELOW~~ ON
 OFFSET \odot PAVEMENT ON LT : RT
- TO - EDGE PAVEMENT
 STATION: 1022+41.61



HORZ. DATUM: NAD83 (2011) GEOID: 2012A
 GRID: NORTHING: 550035.823 EASTING: 1678250.960



RECORD:
 FD P.K./WASHER
 6/8/99, MB
 SET P.K./WASHER
 7/20/99, MB
 FD P.K./WASHER
 REFA41
 8/26/14, DCH

O.D.O.T. DISTRICT 2 SURVEY OFFICE

PERSONNEL _____

REFERENCE NO. 41-A SHEET 26 OF 29

NOTES Barnhisel

H.C. Coventry

R.C. Rousso

DATE 6-8-77

WEATHER Sunny

TEMP. 90°

ROUTE SR18

COUNTY WOOD

TOWNSHIP Bloom

SECTION 35

T. 2 N. R. 11 E

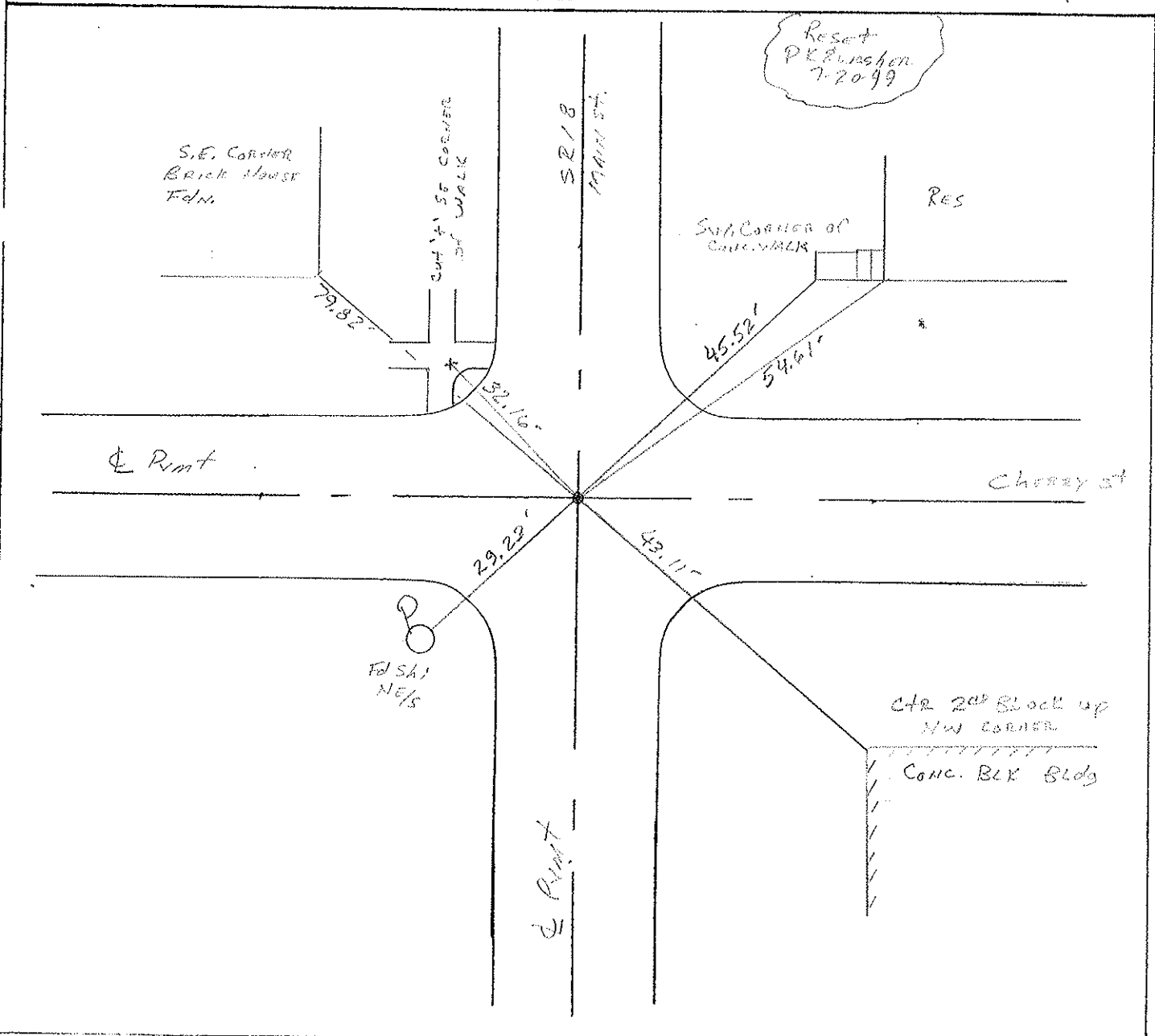
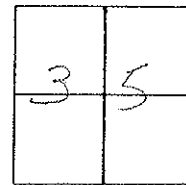
TYPE MONUMENT PK & WASHOR

ON SURFACE - BELOW Surface

LEFT - ☉ PAV'T. - RIGHT BOTH

- TO - EDGE PAVEMENT

S.L.M. 1022+32



O.D.O.T. DISTRICT 2 SURVEY OFFICE

PERSONNEL _____

REFERENCE NO. 41-A

SHEET _____ OF _____

NOTES Hoffman

H.C. BARNHISEL

DATE 5-14-86

ROUTE SR 18

R.C. LOSHKKE

WEATHER Lt. Rain

COUNTY WOOD

TEMP. 70°

TOWNSHIP Bloom

SECTION 35

T.3. N/R 11 E

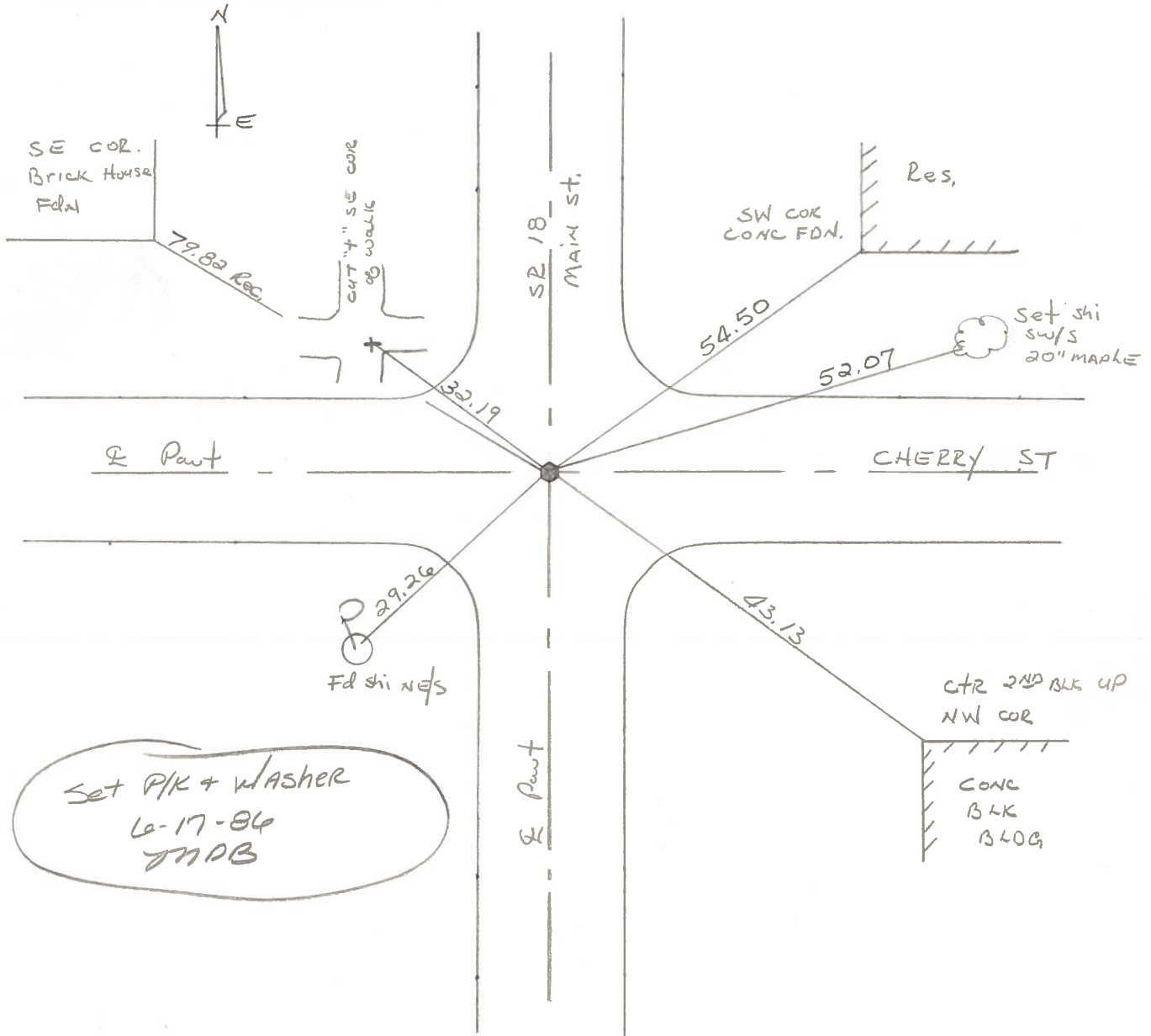
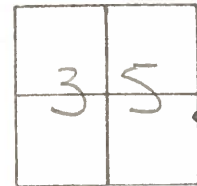
TYPE MONUMENT SMALL RR SPIK.

ON SURFACE - ~~BELOW~~ yes

LEFT- & PAV'T. - ~~RIGHT~~ BOTH Pavts

TO EDGE PAVEMENT

S.L.M. 1021 + 79



Set PK + WASHER
 6-17-86
 JNAB

County Wood S.R. 18

Township Bloom

Section Bloomdale Corp

T3N, R11E

Personnel Smith

Knape

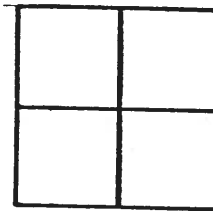
Bowers

Mead

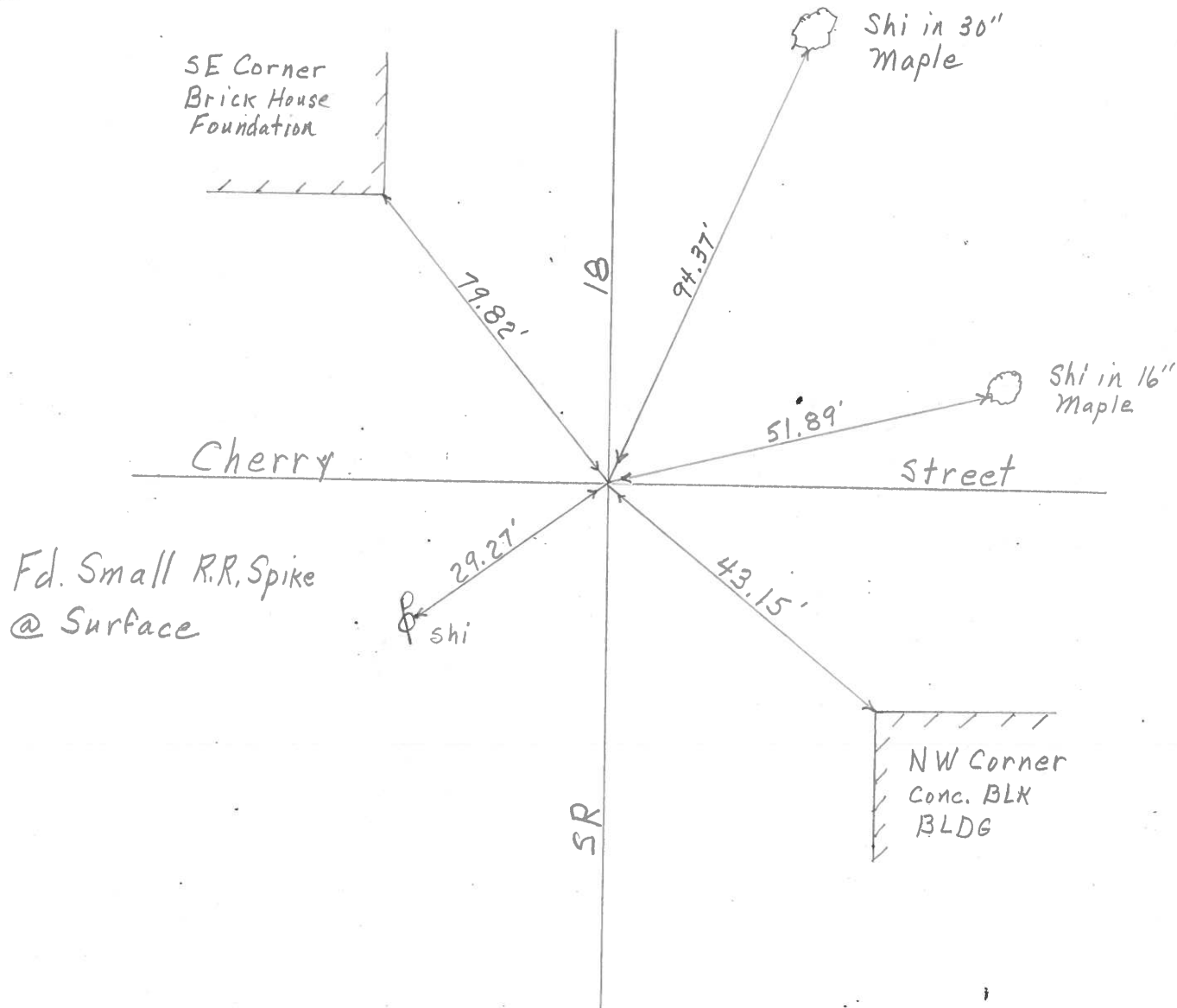
Date 5-7-1979

Weather Clear

Temp. 72°



41A



PERSONNEL	TITLE	PERSONNEL	TITLE
BURNSIDE			
SMITH			
HOLCOMBE			
ROCCHINI			

COUNTY WOOD DATE 6-22-71
 S. R. 18 WEATHER CLEAR
 SEC. BLOOMDALE, D. TEMP. +76°

DESCRIPTION _____ LEFT _____ CENTER LINE _____ RIGHT _____ JOB NO. _____

