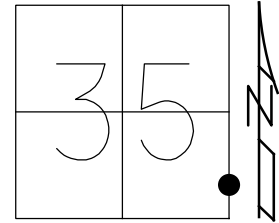


O.D.O.T. DISTRICT 2 SURVEY OFFICE (USE ONLY)

PERSONNEL _____ REFERENCE NO. 41 B SHEET 34 OF 36
 NOTES ASTON DATE 8/10/23 ROUTE SR 18
 H.C. NIESE WEATHER CLOUDY COUNTY WOOD
 R.C. AUBLE TEMP. 74° TOWNSHIP BLOOM
 DWG BY RHOADES PID 95796 SECTION 35
 T 3 N R 11 E

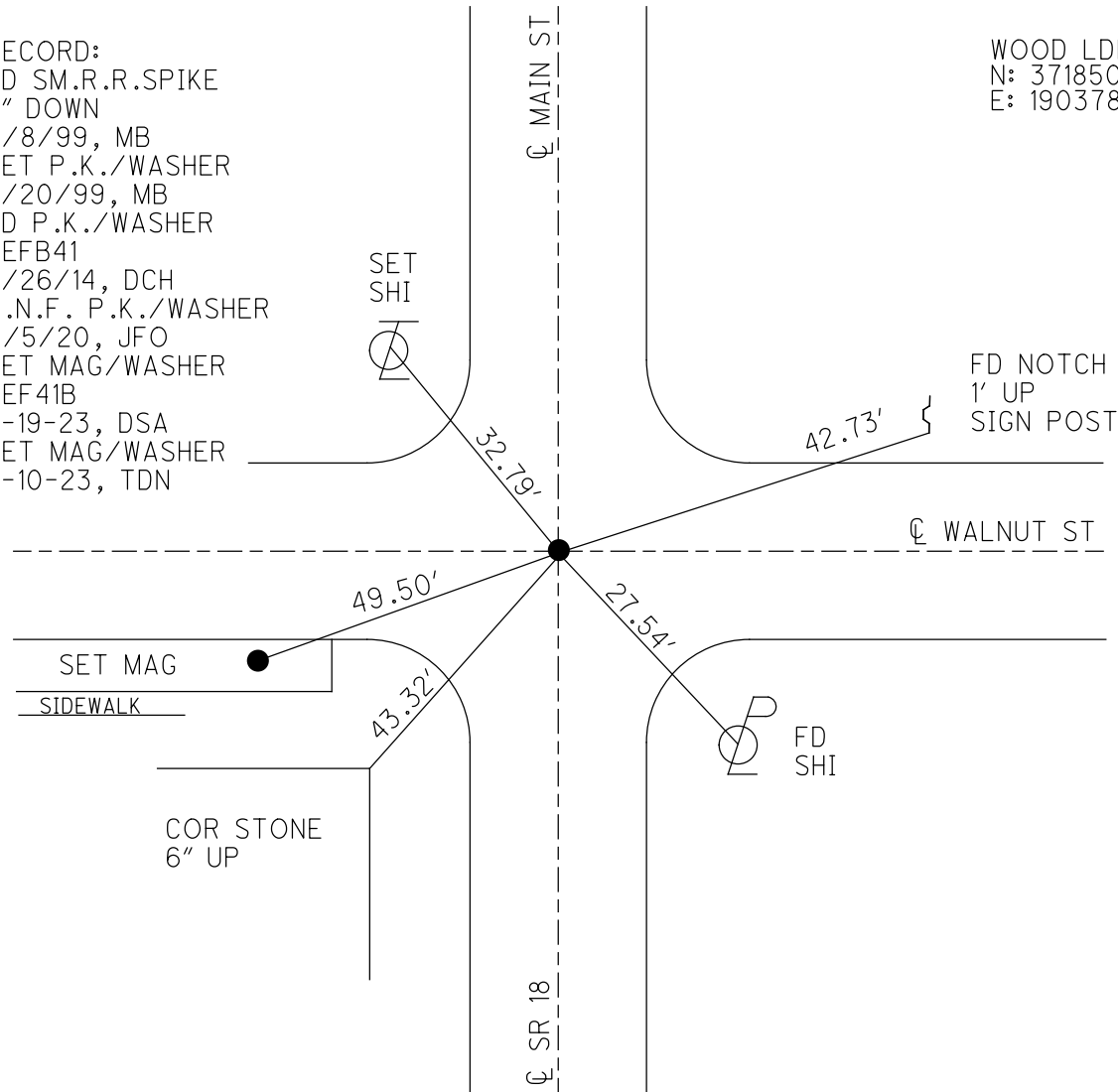
TYPE MONUMENT MAG/WASHER
 ON SURFACE - ~~BELOW~~ ON
 OFFSET ☉ PAVEMENT ON LT : RT
- TO - EDGE PAVEMENT 2' S. OF ☉ W.
 STATION: 1026+09.87



HORZ. DATUM: NAD83 (2011) GEOID: NAVD88 2018
 GRID: NORTHING: 549667.610 EASTING: 1678241.940

RECORD:
 FD SM.R.R.SPIKE
 2" DOWN
 6/8/99, MB
 SET P.K./WASHER
 7/20/99, MB
 FD P.K./WASHER
 REFB41
 8/26/14, DCH
 D.N.F. P.K./WASHER
 11/5/20, JFO
 SET MAG/WASHER
 REF41B
 5-19-23, DSA
 SET MAG/WASHER
 8-10-23, TDN

WOOD LDP:
 N: 371850.975
 E: 190378.715



O.D.O.T. DISTRICT 2 SURVEY OFFICE (USE ONLY)

PERSONNEL _____

REFERENCE NO. 41 B

SHEET 33 OF 35

NOTES BARNHESEL

DATE 6/8/99

ROUTE SR 18

H.C. CANTERBURY

WEATHER SUNNY

COUNTY WOOD

R.C. ROUSES

TEMP. 90°

TOWNSHIP BLOOM

SECTION 35

DWG BY RHOADES PID 93417

T 3 N R 11 E

TYPE MONUMENT SM.R.R.SPIKE

~~ON SURFACE~~ - BELOW 2"

OFFSET ☉ PAVEMENT ON LT : RT

- TO - EDGE PAVEMENT 2' S. OF ☉ W.

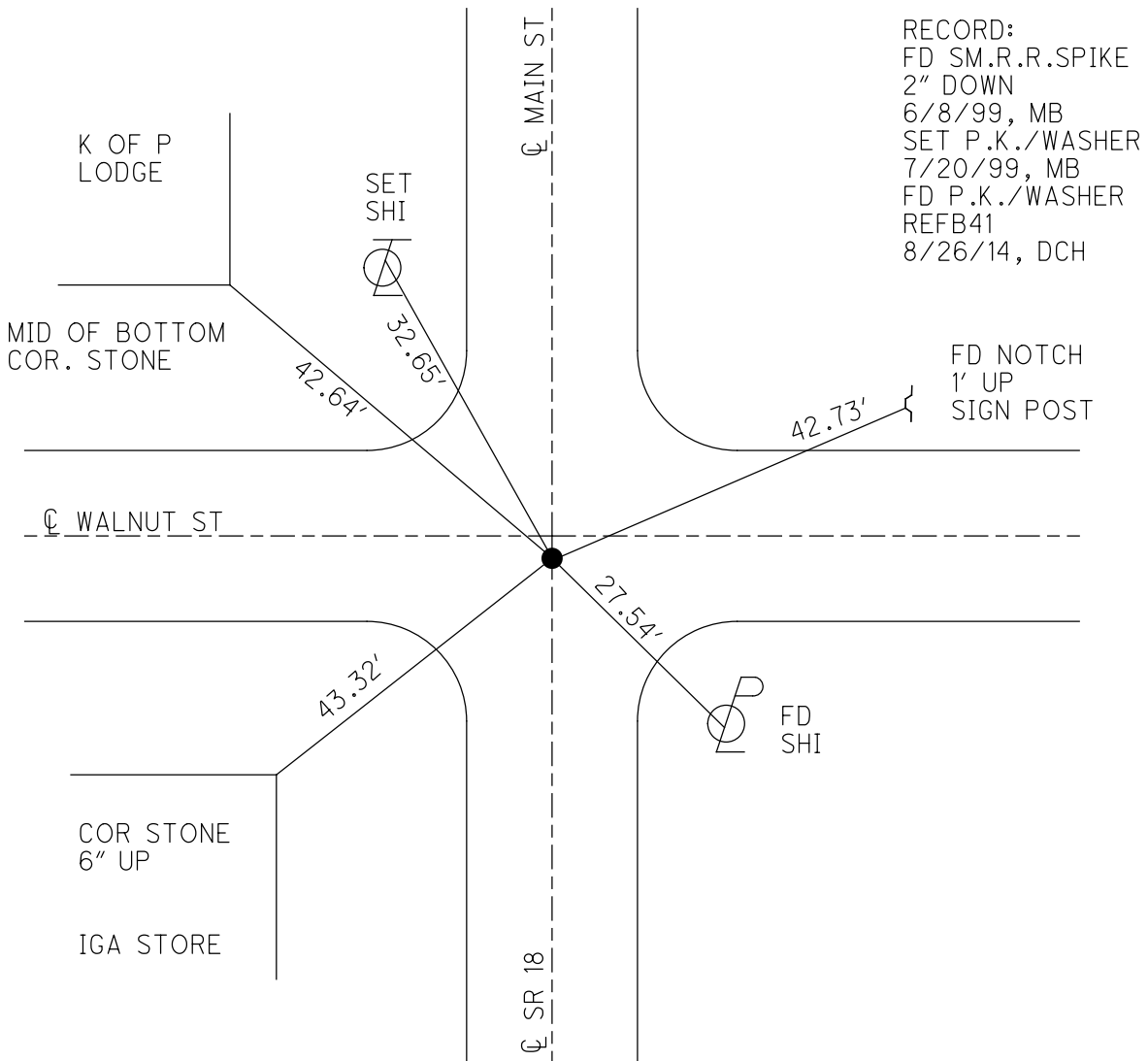
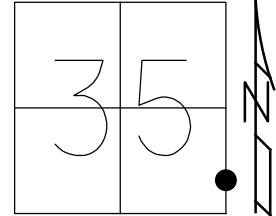
STATION: 1026+09.87

HORZ.DATUM: NAD83 (2011)

GEOID: 2012A

GRID: NORTHING: 549667.681

EASTING: 1678241.849



RECORD:
 FD SM.R.R.SPIKE
 2" DOWN
 6/8/99, MB
 SET P.K./WASHER
 7/20/99, MB
 FD P.K./WASHER
 REFB41
 8/26/14, DCH

FD NOTCH
 1' UP
 SIGN POST

42.73'

32.65'

42.64'

27.54'

43.32'

FD
 SHI

COR STONE
 6" UP

IGA STORE

O.D.O.T. DISTRICT 2 SURVEY OFFICE

PERSONNEL

REFERENCE NO. 41-B

SHEET 27 OF 29

NOTES Barnhisel

H.C. Cartography

R.C. Rousos III

DATE 6-8-99

WEATHER Sunny

TEMP. 90°

ROUTE SR 18

COUNTY WOOD

TOWNSHIP Bloom

SECTION 35

T3 N R 11 E

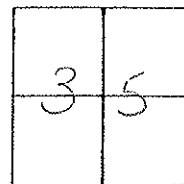
TYPE MONUMENT Small RR spike

ON SURFACE - BELOW 2" Below

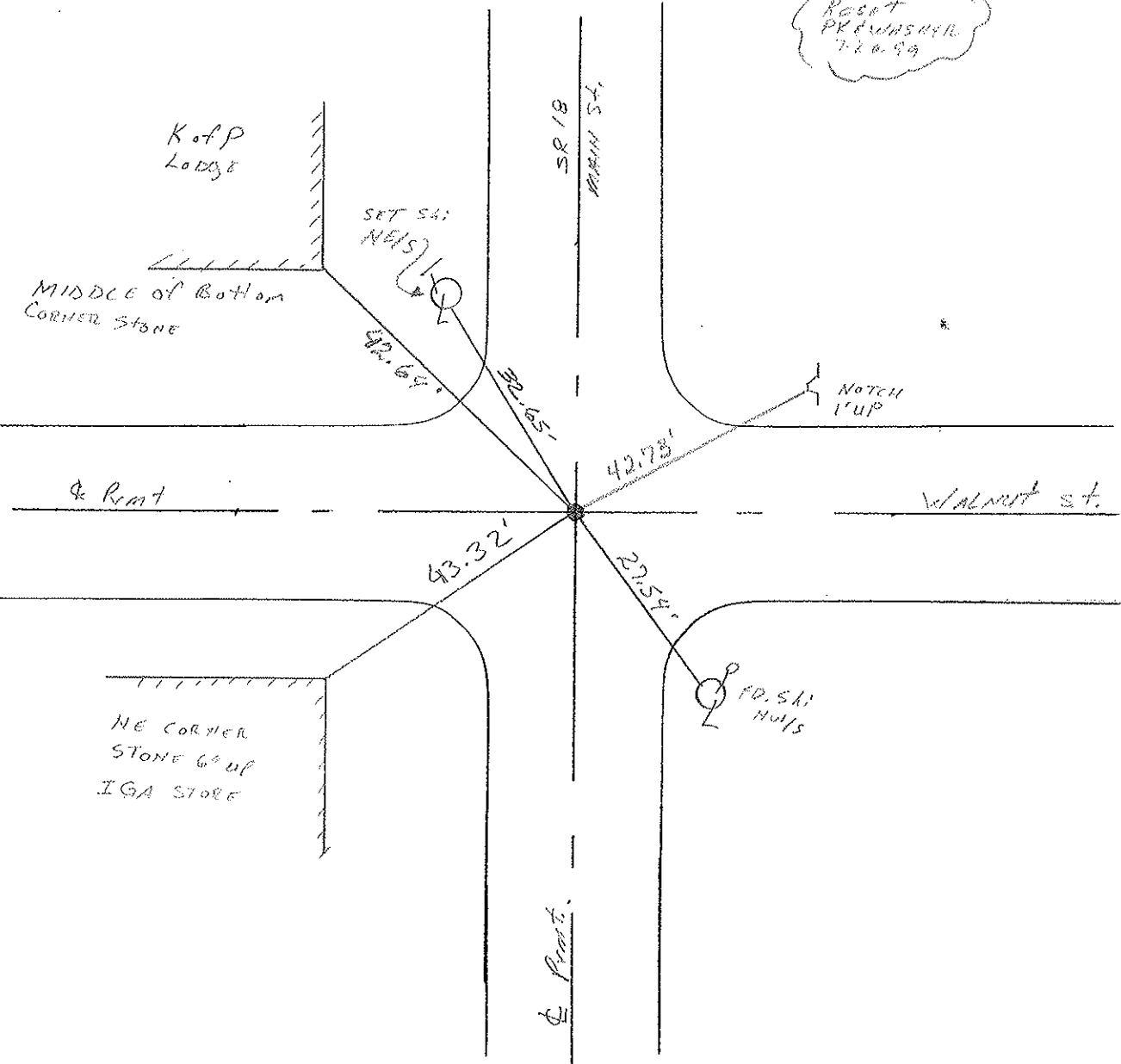
LEFT - PAV'T. - RIGHT on SR 18 2's. of 1/2 Pint. West

- TO - EDGE PAVEMENT

S.L.M. 1026400



Reset
PREVASHIL
7-20-99



O.D.O.T. DISTRICT 2 SURVEY OFFICE

PERSONNEL

REFERENCE NO. 41-B

SHEET OF

NOTES Hoffman

H.C. BARNHISEL

R.C. LOENRKE

DATE 5-14-86

WEATHER Lt. Rain

TEMP. 70°

ROUTE SR 18

COUNTY WOOD

TOWNSHIP Bloom

SECTION 35

T. 3 N. R. 11 E

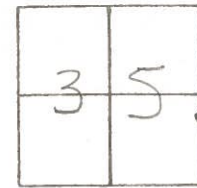
TYPE MONUMENT SMALL RR SPIKE

ON SURFACE - BELOW yes

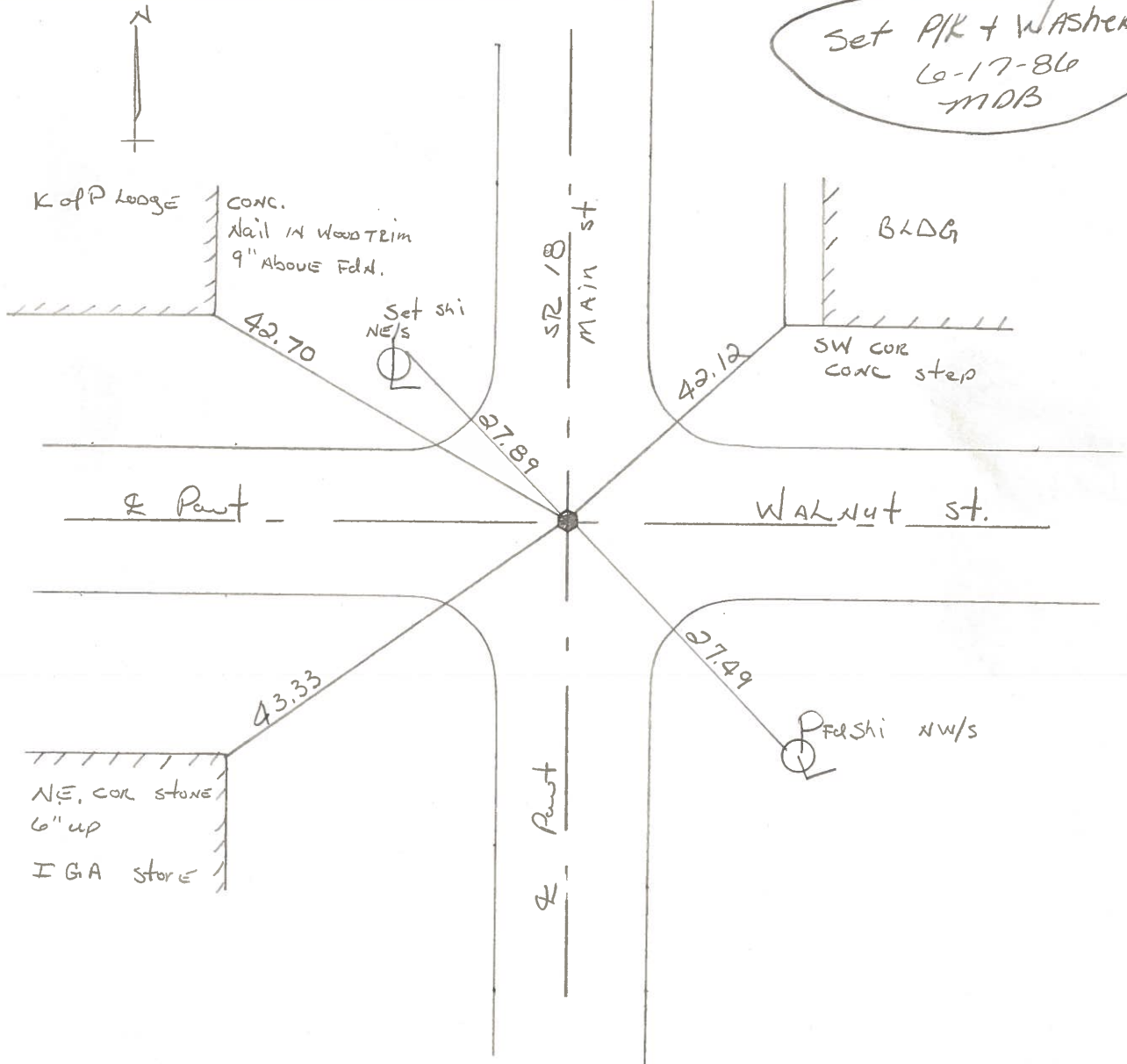
LEFT - & PAV'T. - RIGHT ON SR 18, 2' s. of & Part West

TO EDGE PAVEMENT

S.L.M. 1025 + 47



Set P/R + Washer
6-17-86
MDB



County Wood S.R. 18

Date 5-7-1979

Township Bloom

Weather Clear

Section Bloomdale Corp

Temp. 72°

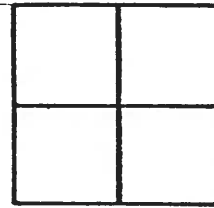
T3N, R11E

Personnel Smith

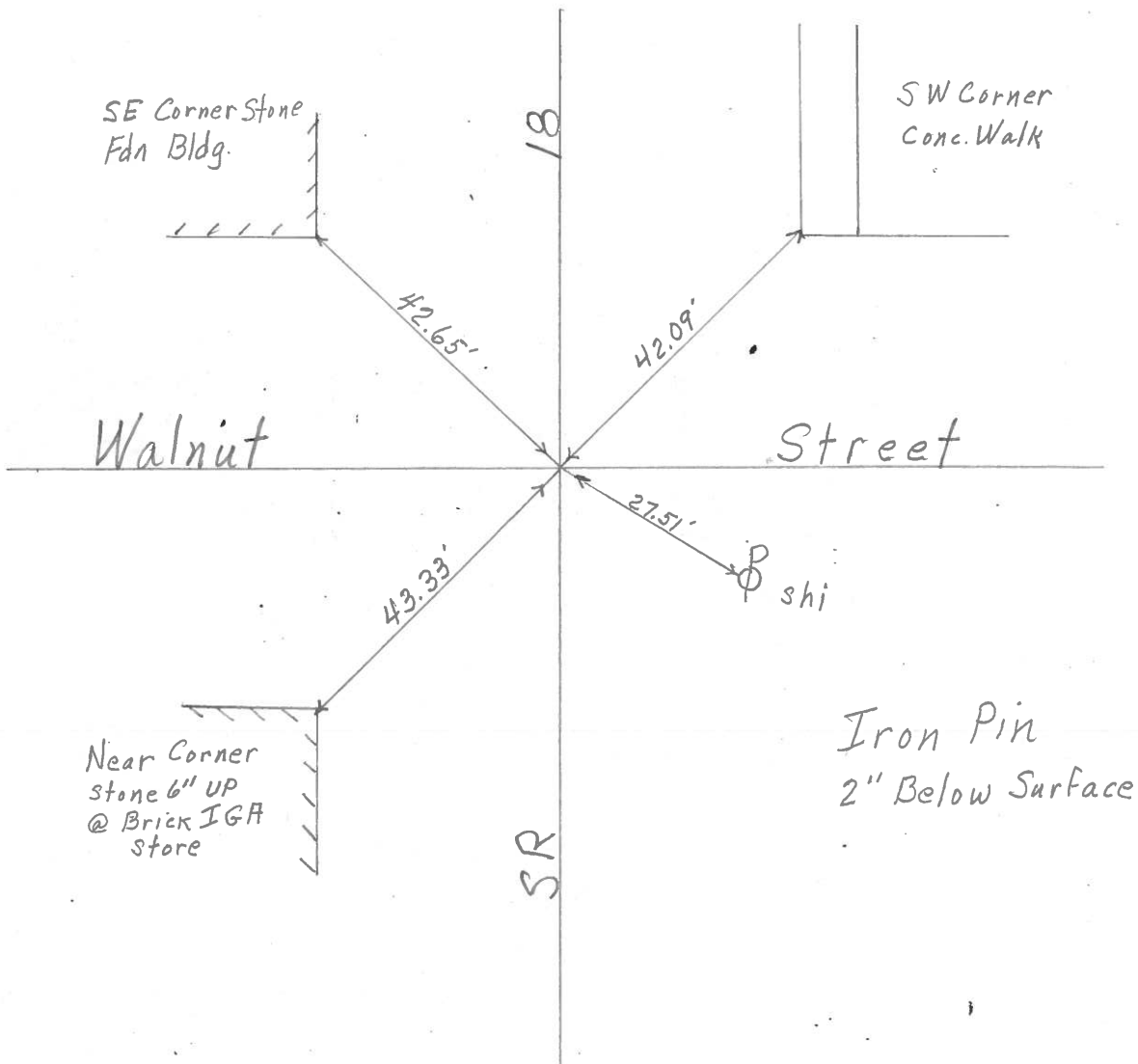
Knape

Bowers

Mead



41B



PERSONNEL	TITLE	PERSONNEL	TITLE
BURNSIDE			
SMITH			
HOLCOMBE			
ROCCHINI			

COUNTY WOOD DATE 6-22-71
 S. R. 18 WEATHER CLEAR
 SEC. BLOOMDALE, D. TEMP. +76°

DESCRIPTION _____ LEFT _____ CENTER LINE _____ RIGHT _____ JOB NO. _____

