

O.D.O.T. DISTRICT 2 SURVEY OFFICE (USE ONLY)

PERSONNEL

REFERENCE NO. 41 C

SHEET 35 OF 36

NOTES ASTON

DATE 8/10/23

ROUTE SR 18

H.C. NIESE

WEATHER CLOUDY

COUNTY WOOD

R.C. AUBLE

TEMP. 74°

TOWNSHIP BLOOM

DWG BY RHOADES

PID 95796

SECTION 35

T 3 N R 11 E

TYPE MONUMENT MAG/WASHER

ON SURFACE - ~~BELOW~~ ON

OFFSET \varnothing PAVEMENT ON LT : RT

- TO - EDGE PAVEMENT

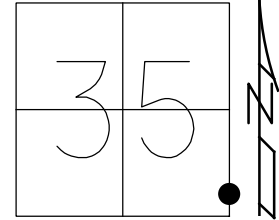
STATION: 1029+77.04

HORZ.DATUM: NAD83 (2011)

GEOID: NAVD88 2018

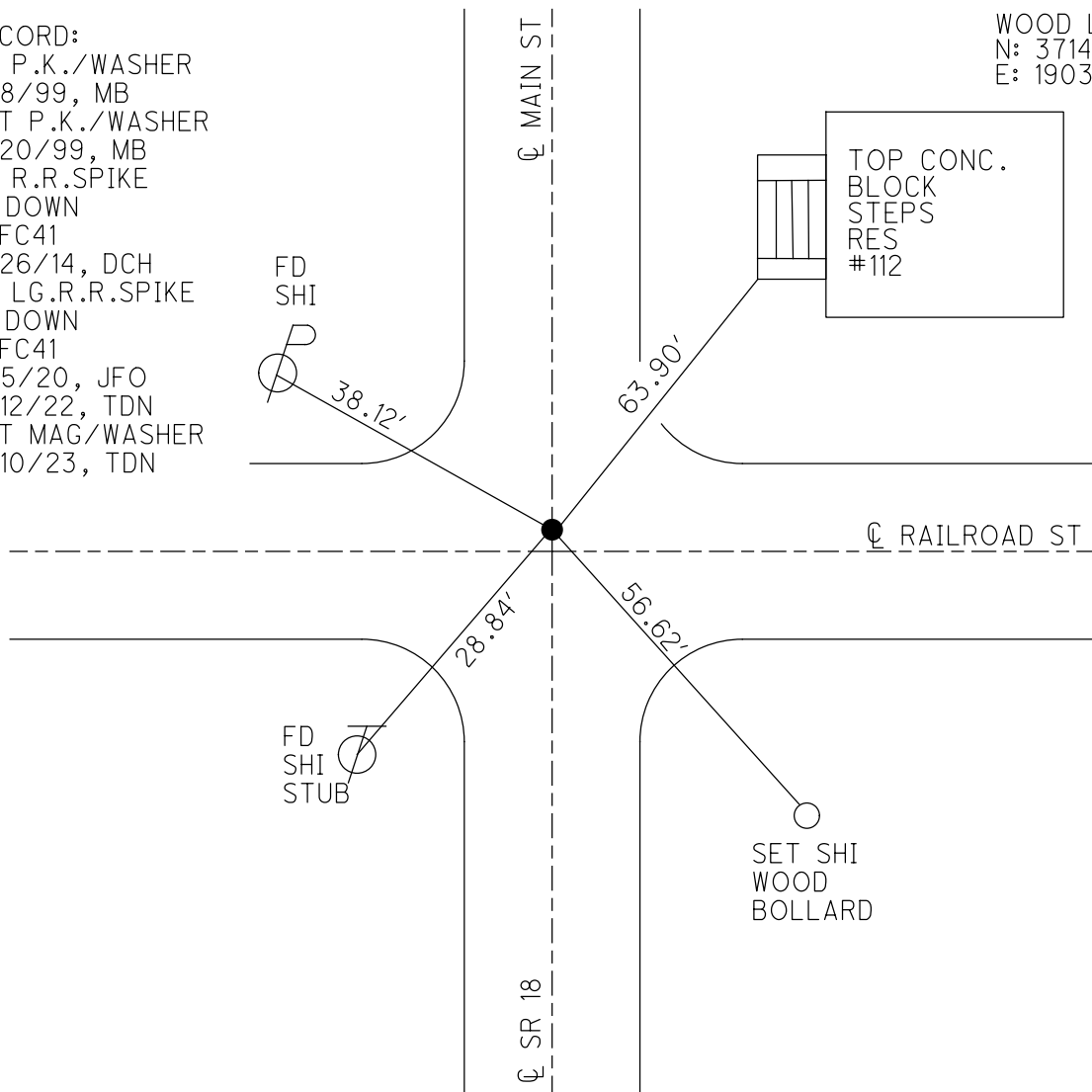
GRID: NORTHING: 549300.608

EASTING: 1678232.446



RECORD:
 FD P.K./WASHER
 6/8/99, MB
 SET P.K./WASHER
 7/20/99, MB
 FD R.R.SPIKE
 3" DOWN
 REFC41
 8/26/14, DCH
 FD LG.R.R.SPIKE
 2" DOWN
 REFC41
 11/5/20, JFO
 4/12/22, TDN
 SET MAG/WASHER
 8/10/23, TDN

WOOD LDP:
 N: 371483.848
 E: 190374.061



O.D.O.T. DISTRICT 2 SURVEY OFFICE (USE ONLY)

PERSONNEL

REFERENCE NO. 41 C

SHEET 34 OF 35

NOTES BARNHISEL
 H.C. CANTERBURY
 R.C. ROUSES

DATE 6/8/99
 WEATHER SUNNY
 TEMP. 90°

ROUTE SR 18
 COUNTY WOOD
 TOWNSHIP BLOOM
 SECTION 35
 T 3 N R 11 E

DWG BY RHOADES PID 93417

TYPE MONUMENT SM.R.R.SPIKE

ON SURFACE - ~~BELOW~~ ON

OFFSET ☉ PAVEMENT ON LT : RT

- TO - EDGE PAVEMENT

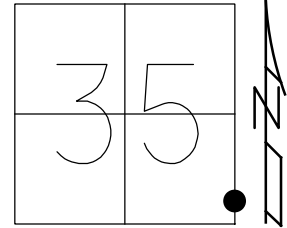
STATION: 1029+77.04

HORZ.DATUM: NAD83 (2011)

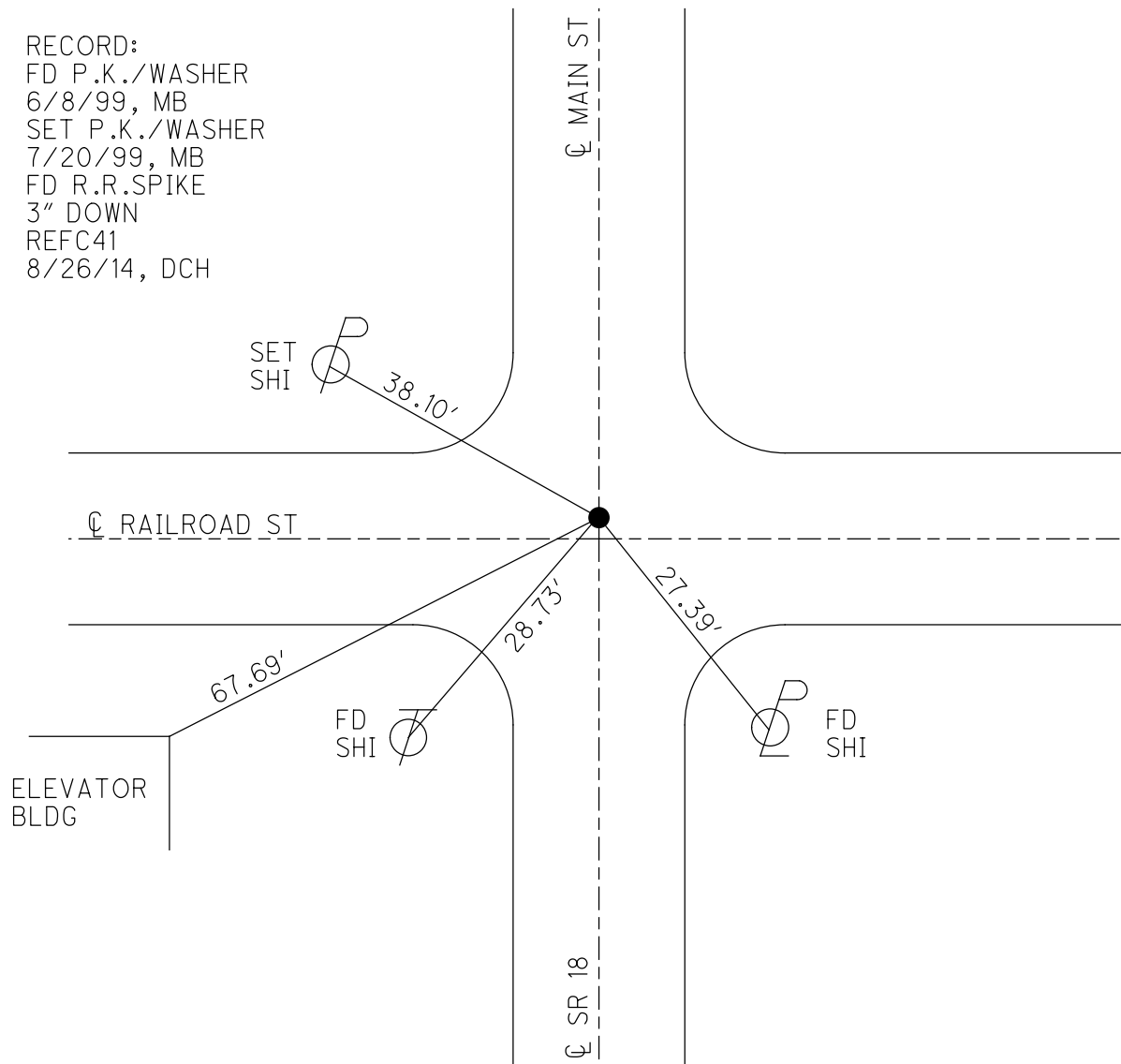
GEOID: 2012A

GRID: NORTHING: 549300.625

EASTING: 1678232.430



RECORD:
 FD P.K./WASHER
 6/8/99, MB
 SET P.K./WASHER
 7/20/99, MB
 FD R.R.SPIKE
 3" DOWN
 REFC41
 8/26/14, DCH



O.D.O.T. DISTRICT 2 SURVEY OFFICE

PERSONNEL

REFERENCE NO. 41-C

SHEET 28 OF 29

NOTES Revised

H.C. Canterbury

R.C. Raisin III

DATE 6-8-99

WEATHER Sunny

TEMP. +90°F

ROUTE SR 18

COUNTY WOOD

TOWNSHIP Bloom

SECTION 35

T3 N R 11 E

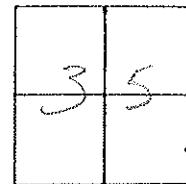
TYPE MONUMENT PK & Wagon

ON SURFACE - BELOW Surface

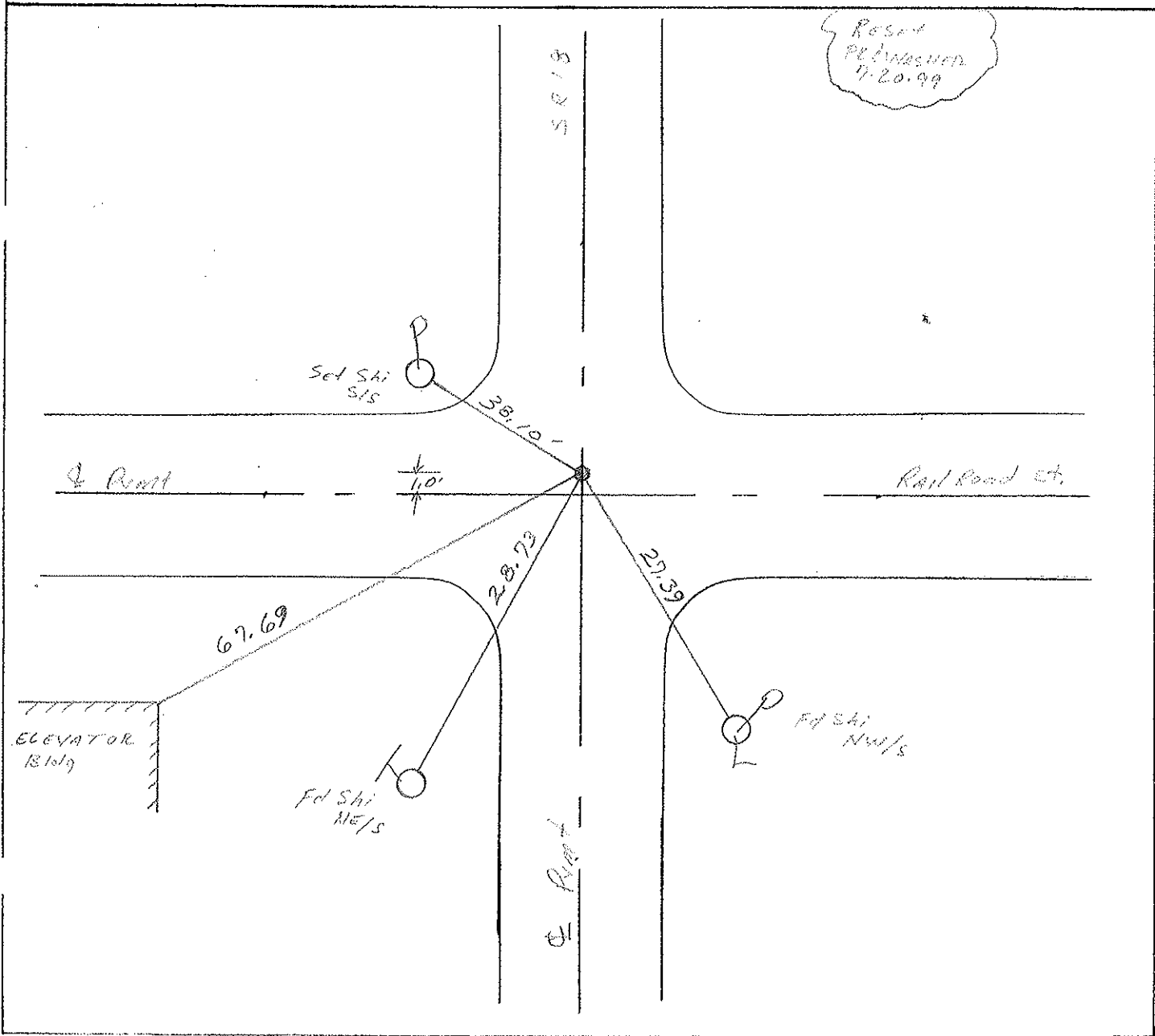
LEFT - CL PAV'T. - RIGHT CL Rmt SR 18

- TO - EDGE PAVEMENT

S.L.M. 1029+68



Reset
PK Wagon
7-20-99



O.D.O.T. DISTRICT 2 SURVEY OFFICE

PERSONNEL _____

REFERENCE NO. 41-C

SHEET _____ OF _____

NOTES Hoffman

H.C. BAKHAISEL

DATE 5-14-86

ROUTE SR 18

R.C. LOEHARKE

WEATHER Lt. Rain

COUNTY WOOD

TEMP. 70°

TOWNSHIP Bloom

SECTION 35

T 3 N R 11 E

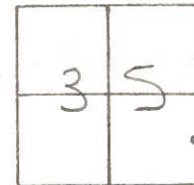
TYPE MONUMENT SMALL RR SPIKE

ON SURFACE - ~~BELOW~~ yes

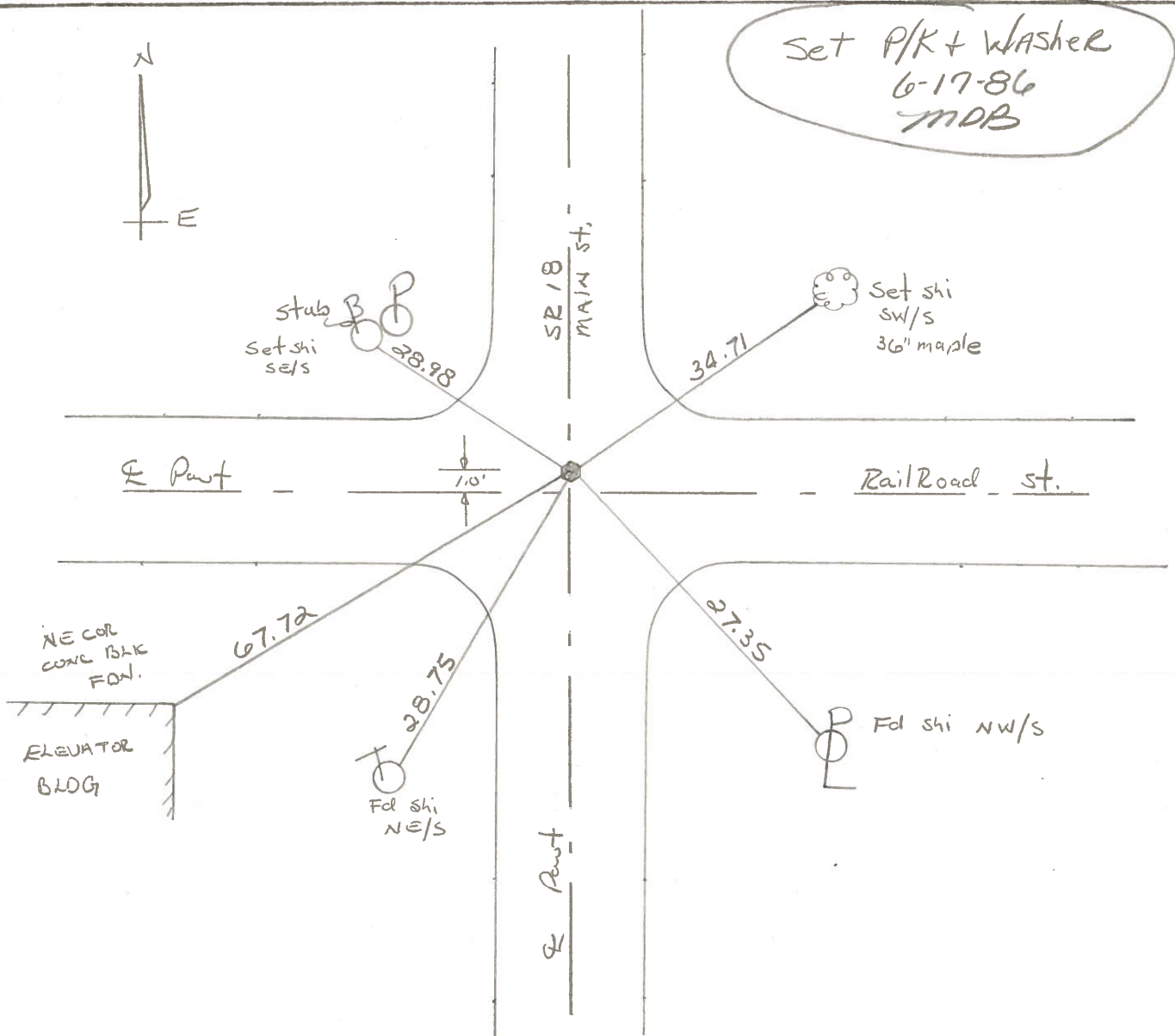
~~LEFT - & PAV'T. - RIGHT~~ yes

TO EDGE PAVEMENT

S.L.M. 1029 + 15



Set P/K + Washer
6-17-86
MDB



County Wood S.R. 18

Date 5-7-1979

Township Bloom

Weather Clear

Section Bloomdale Corp

Temp. 72°

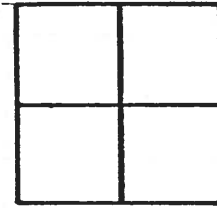
T3N, R11E

Personnel Smith

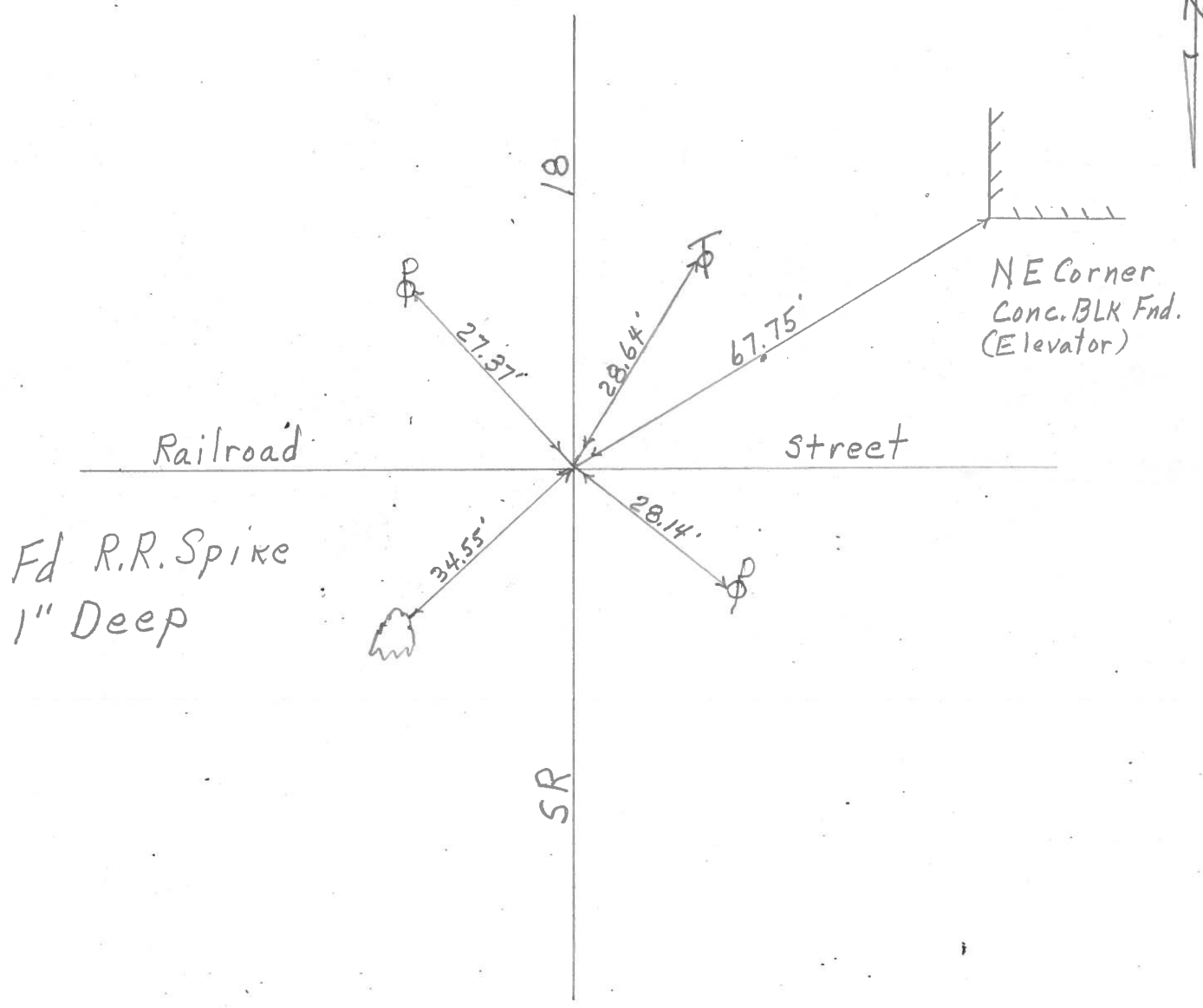
Knape

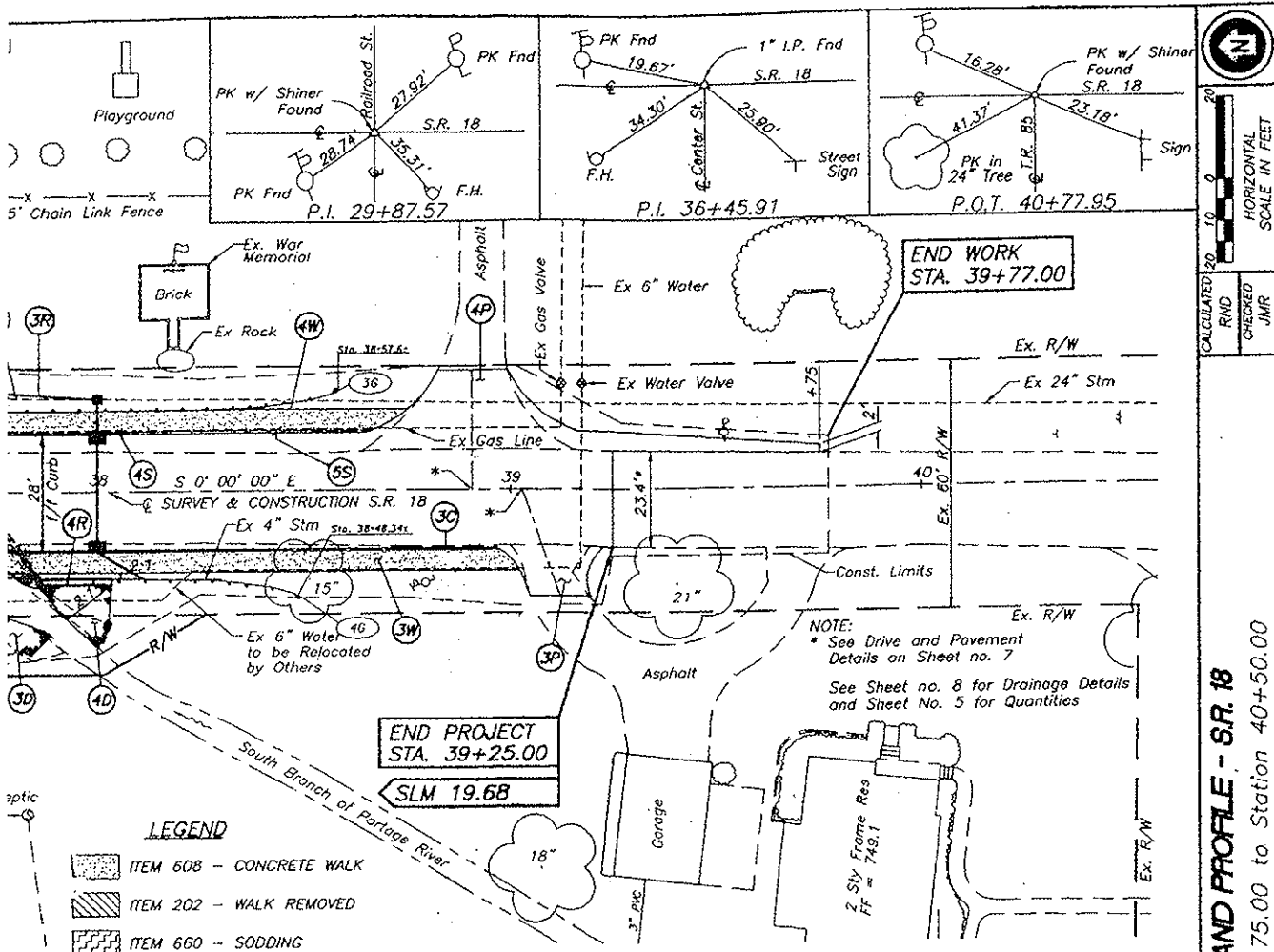
Bowers

Mead

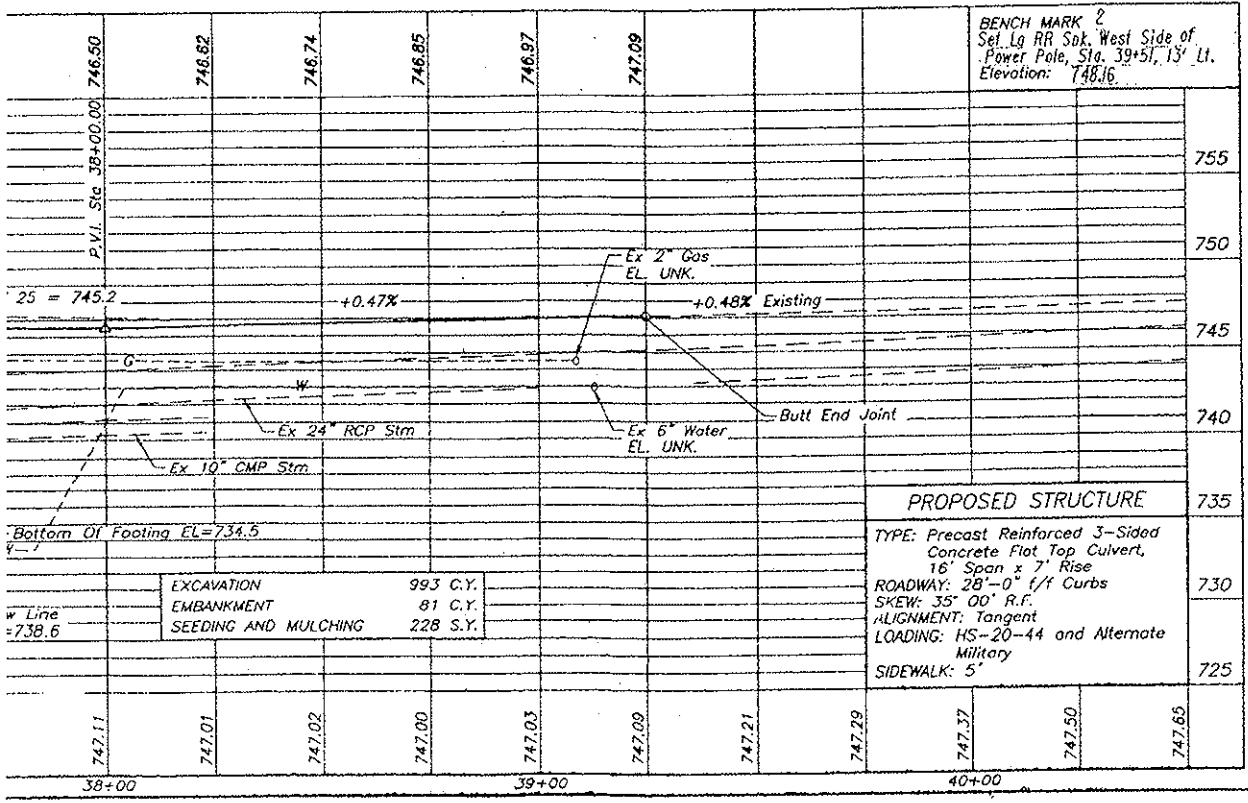


410





- LEGEND**
- ITEM 608 - CONCRETE WALK
 - ITEM 202 - WALK REMOVED
 - ITEM 660 - SODDING



PLAN AND PROFILE - S.R. 18
 Station 34+75.00 to Station 40+50.00
W00-18-19.65
 CALCULATED: JMR
 RND: JMR
 CHECKED: JMR
 HORIZONTAL SCALE: IN FEET
 1" = 20'