

O.D.O.T. DISTRICT 2 SURVEY OFFICE (USE ONLY)

PERSONNEL

REFERENCE NO. 42

SHEET 36 OF 36

NOTES ASTON  
 H.C. NIESE  
 R.C. AUBLE

DATE 8/10/23  
 WEATHER CLOUDY  
 TEMP. 74°

ROUTE SR 18  
 COUNTY WOOD  
 TOWNSHIP BLOOM  
 SECTION 35

DWG BY RHOADES PID 95796

T 3 N R 11 E

TYPE MONUMENT MAG/WASHER

ON SURFACE - ~~BELOW~~ ON

OFFSET  $\odot$  PAVEMENT 5.6' LT : ~~RT~~

5' TO LT EDGE PAVEMENT 2' N. OF  $\odot$  W.

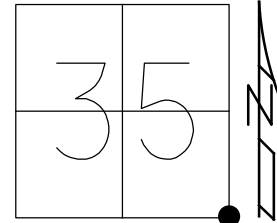
STATION: 1040+67.27

HORZ. DATUM: NAD83 (2011)

GEOID: NAVD88 2018

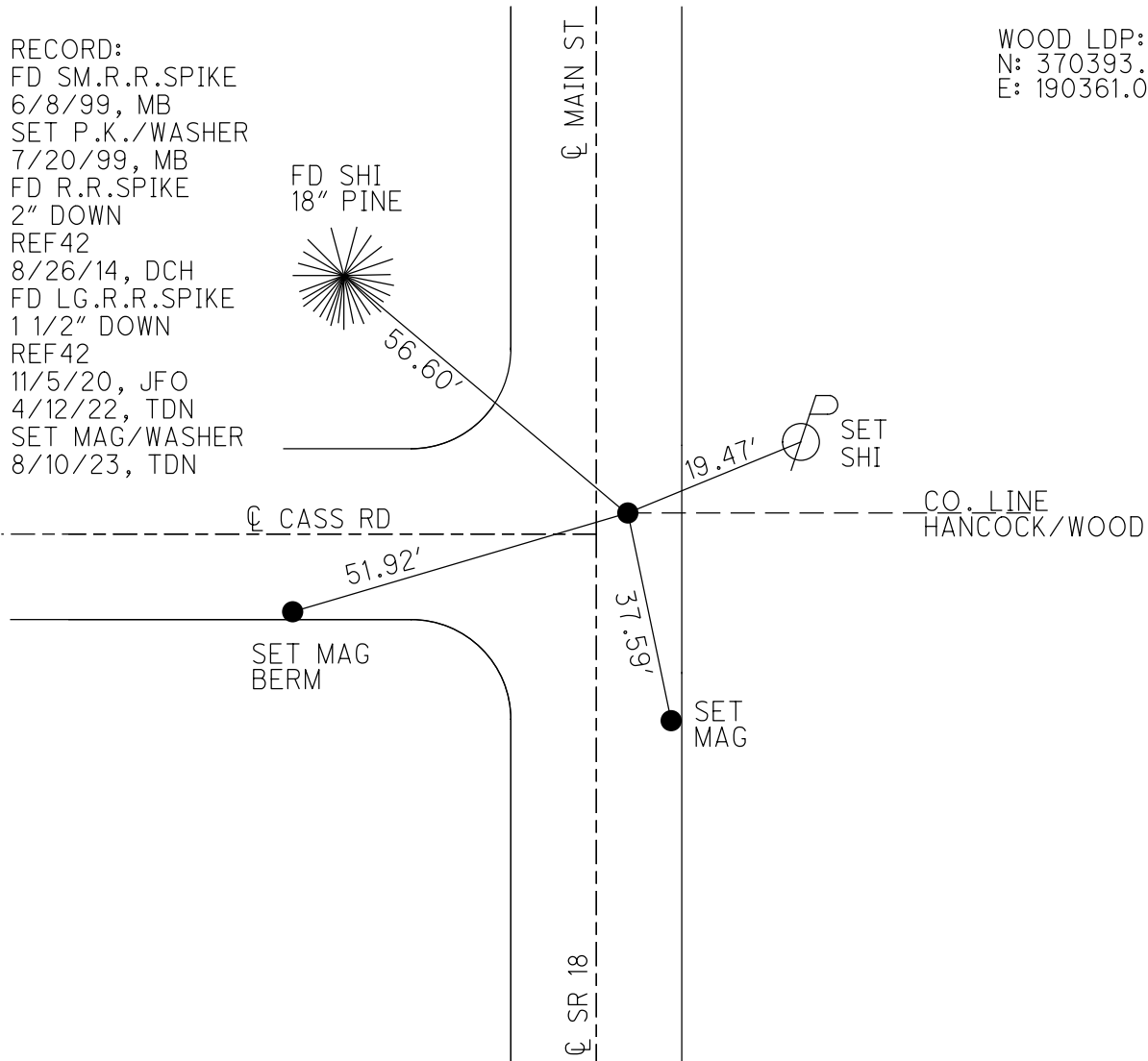
GRID: NORTHING: 548210.708

EASTING: 1678205.075



RECORD:  
 FD SM.R.R.SPIKE  
 6/8/99, MB  
 SET P.K./WASHER  
 7/20/99, MB  
 FD R.R.SPIKE  
 2" DOWN  
 REF42  
 8/26/14, DCH  
 FD LG.R.R.SPIKE  
 1 1/2" DOWN  
 REF42  
 11/5/20, JFO  
 4/12/22, TDN  
 SET MAG/WASHER  
 8/10/23, TDN

WOOD LDP:  
 N: 370393.589  
 E: 190361.065



O.D.O.T. DISTRICT 2 SURVEY OFFICE (USE ONLY)

PERSONNEL \_\_\_\_\_

REFERENCE NO. 42

SHEET 35 OF 35

NOTES BARNHEISEL

DATE 6/8/99

ROUTE SR 18

H.C. CANTERBURY

WEATHER SUNNY

COUNTY WOOD

R.C. ROUSES

TEMP. 90°

TOWNSHIP BLOOM

SECTION 35

DWG BY RHOADES PID 93417

T 3 N R 11 E

TYPE MONUMENT SM.R.R.SPIKE

ON SURFACE - ~~BELOW~~ ON

OFFSET  $\text{\textcircled{C}}$  PAVEMENT 5' LT : ~~RT~~

5' TO LT EDGE PAVEMENT 2' N. OF  $\text{\textcircled{C}}$  W.

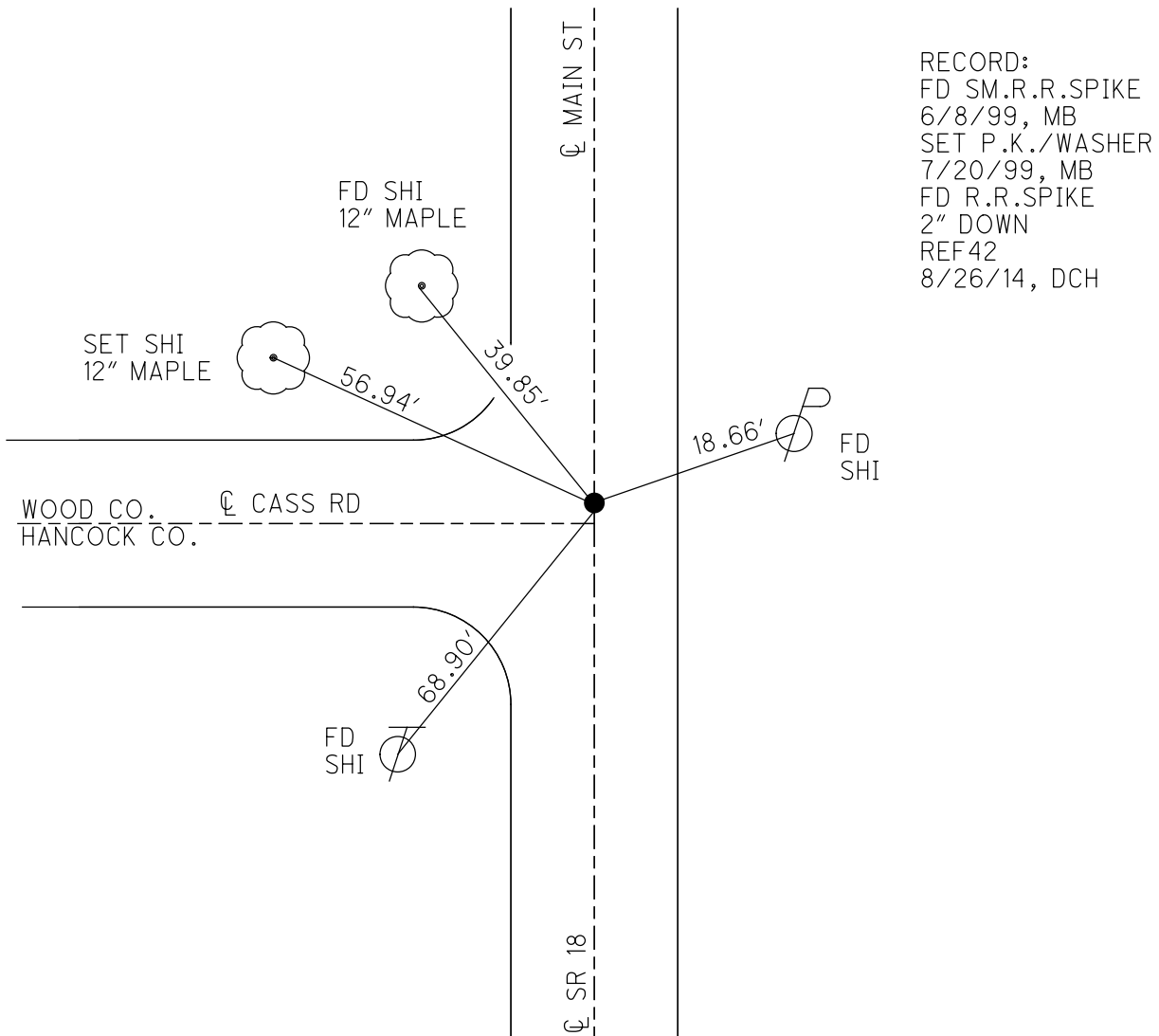
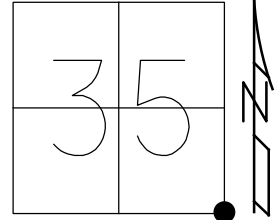
STATION: 1040+67.27

HORZ.DATUM: NAD83 (2011)

GEOID: 2012A

GRID: NORTHING: 548210.741

EASTING: 1678205.070



RECORD:  
 FD SM.R.R.SPIKE  
 6/8/99, MB  
 SET P.K./WASHER  
 7/20/99, MB  
 FD R.R.SPIKE  
 2" DOWN  
 REF42  
 8/26/14, DCH

# O.D.O.T. DISTRICT 2 SURVEY OFFICE

PERSONNEL

REFERENCE NO. 42

SHEET 29 OF 29

NOTES Barnhisel

H.C. CANTERBURY

R.C. Rousos

DATE 6-8-99

WEATHER Sunny

TEMP. +70°F

ROUTE SR18

COUNTY WOOD

TOWNSHIP Bloom

SECTION 35

T 3 N R 11 E

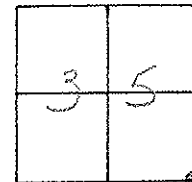
TYPE MONUMENT SM. RR SPIKE

ON SURFACE - BELOW YES

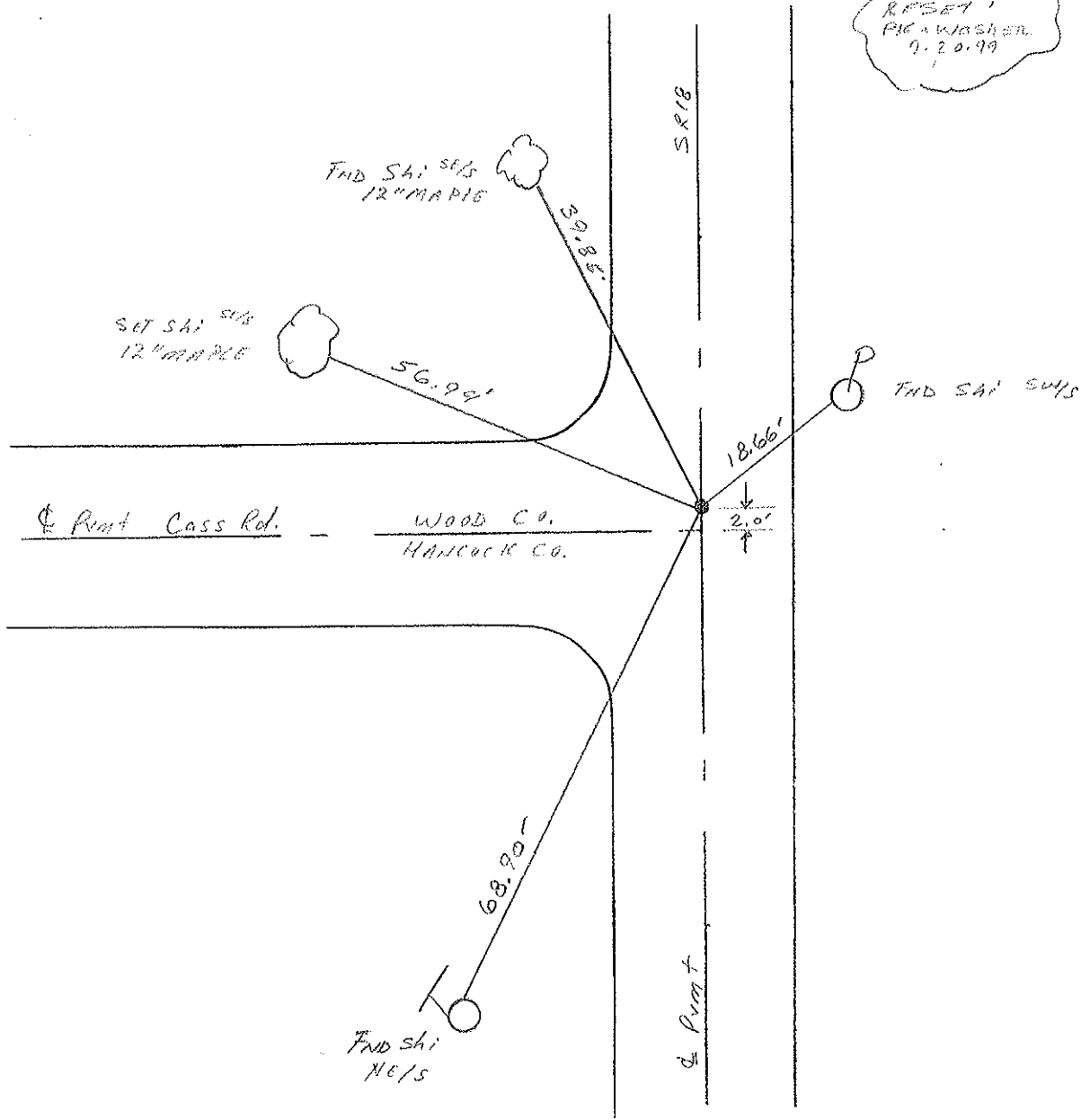
LEFT - CL PAV'T. - RIGHT 5.0'

5.0' TO Lt EDGE PAVEMENT

S.L.M. 10'x10'x0.5



RESET  
PIE WASHER  
7.20.99



# O.D.O.T. DISTRICT 2 SURVEY OFFICE

PERSONNEL \_\_\_\_\_

REFERENCE NO. 42

SHEET \_\_\_\_\_ OF \_\_\_\_\_

NOTES Hoffman

H.C. BARNHISEL

DATE 5-14-86

ROUTE SZ 18

R.C. LOEHKE

WEATHER Cloudy

COUNTY Wood

TEMP. 70°

TOWNSHIP Bloom

SECTION 35

T. 3 N. R. 11 E

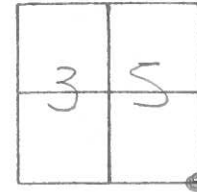
TYPE MONUMENT SMALL RR SPIKE

ON SURFACE - ~~BELOW~~ yes

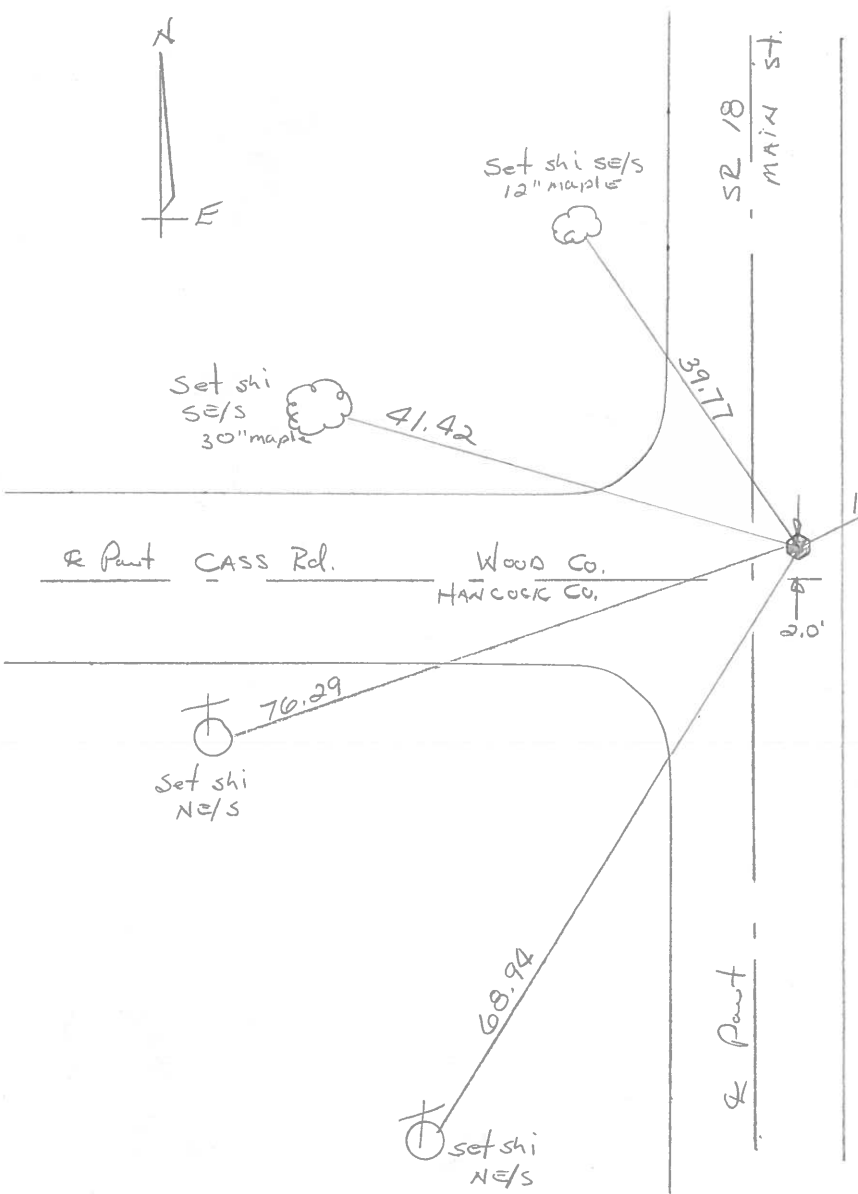
LEFT - ~~C. PAV'T.~~ - ~~RIGHT~~ 5.0'

5.0' TO Lt EDGE PAVEMENT

S.L.M. 1040 +05



Set PK + WASHER  
4-17-86  
MAB



County Wood S.R. 18

Date 5-7-1979

Township Bloom

Weather Clear

Section Bloomdale Corp.

Temp. 76°

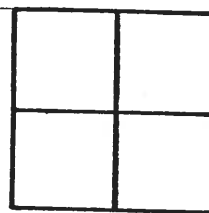
T3N, R1E

Personnel Smith

Knape

Bowers

Mead



42

