

8015

# STATE OF OHIO DEPARTMENT OF HIGHWAYS

## WOO-20-1.14 WOO-23-30.79

### WOOD COUNTY VILLAGE OF PERRYSBURG

SEP 20 1962  
GROUND PHOTOLAB

FED. RD. DIVISION	STATE	PROJECT	1 11
2	OHIO	STATE	

Woo-20-1.14  
Woo-23-30.79

### CONVENTIONAL SIGNS

County Line	=====
Township Line	-----
Section Line	-----
Corporation Line	-----
Center Line	-----
Pole Line	⊕ ⊕ ⊕ ⊕ ⊕ ⊕ ⊕
Railroad	====+====
Drainage	~~~~~

Existing ----- New -----

### INDEX OF SHEETS

Title Sheet	1
Typical Sections	243
General Notes	4
General Summary	4
Calculations	5
Sub-Summaries	5
Plan And Profile Sheets	6 to 9
Cross-Sections	10411

### LINE DATA

**U.S. 23**  
 Begin Project and Work Sta. 1626 + 20  
 End Project and Work Sta. 1661 + 95  
 Net Length Project and Work = 3575 Lin. Ft. or 0.677 Mi.

**U.S. 20**  
 Begin Work Sta. 59 + 45  
 End Work Sta. 74 + 19  
 Gross Length Work = 1474.0 Lin. Ft.  
 Deduct For B&O R.R. = -23.0 Lin. Ft.  
 Net Length Work = 1451.0 Lin. Ft. or 0.274 Mi.

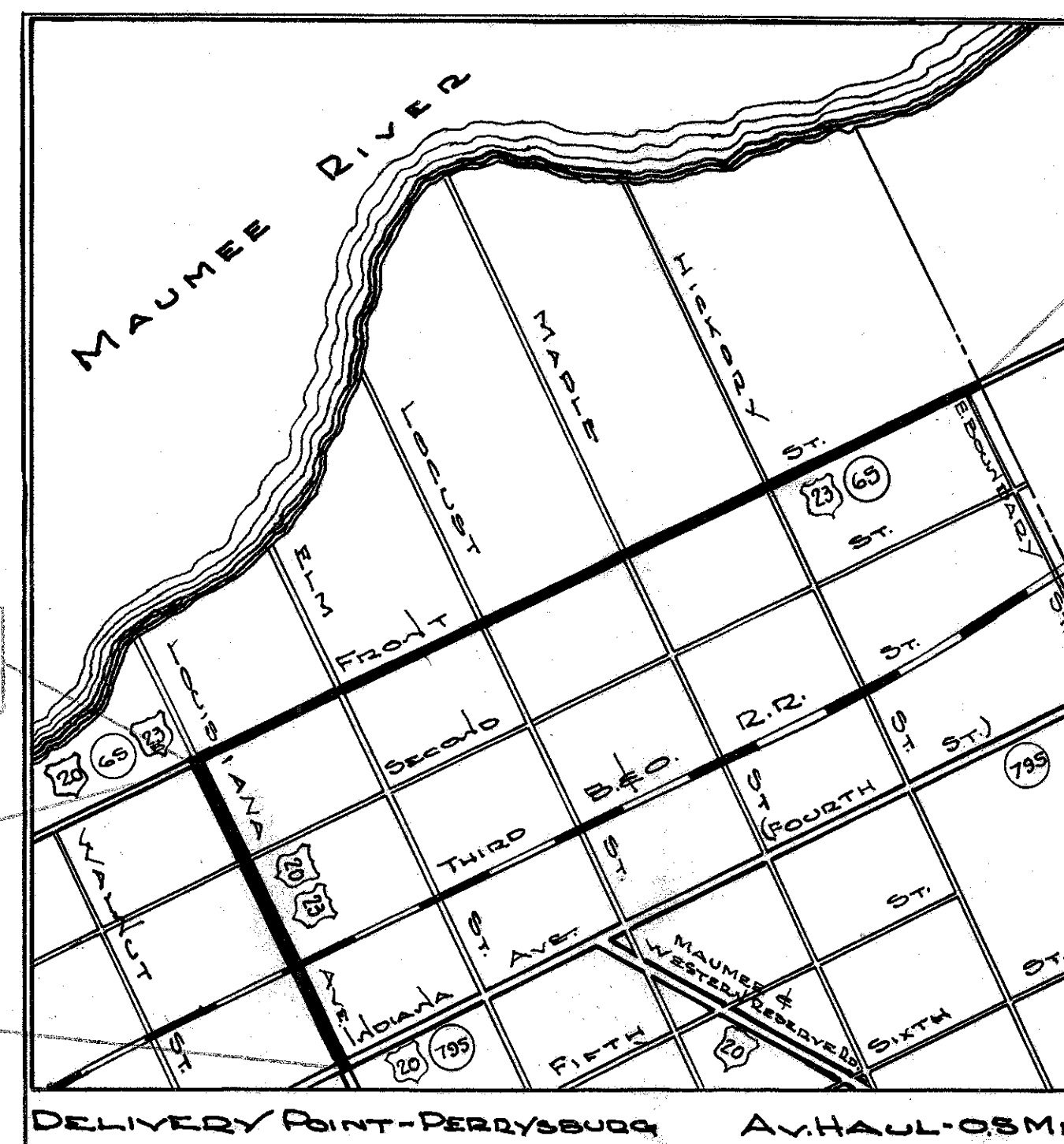
Begin Project Sta. 60 + 50  
 End Project Sta. 73 + 32  
 Gross Length Project = 1282.0 Lin. Ft.  
 Deduct For B&O R.R. = -23.0 Lin. Ft.  
 Net Length Project = 1259.0 Lin. Ft. or 0.238 Mi.

**TOTAL LENGTH OF PROJECT = 4834.0 Lin. Ft. or 0.915 Mi.**  
**TOTAL LENGTH OF WORK = 5026.0 Lin. Ft. or 0.951 Mi.**

Begin Project & Work  
Woo-23-30.79  
Sta. 1626 + 20

Begin Work  
Sta. 59 + 45  
Begin Project  
Sta. 60 + 50  
Woo-20-1.14

End Work  
Sta. 74 + 19  
End Project  
Sta. 73 + 32  
Woo-20-1.14



### LOCATION MAP

Scale In Feet  
1" = 500'

Portion To Be Improved  
 State Routes  
 Other Streets

SCALE  
 Plan Vertical 1" = 50.0'  
 Profile Vertical 1" = 5.0'  
 Horizontal 1" = 50.0'  
 Cross Sections 1" = 5.0'

The Standard Specifications Of The State Of Ohio, Department Of Highways, Including Changes And Supplemental Specifications Listed In The Proposal Shall Govern This Improvement

The Right-Of-Way For This Improvement Will Be Revided By The State Of Ohio

I Herby Approve These Plans And Declare The Making Of This Improvement Will Not Require The Closing Of The Highway To Traffic, And That Provisions For The Maintenance And The Safety Of Traffic Will Be As Set Forth On The Plans And Estimates.

Approved Wm J. Smith  
 Date 6-10-59 Division Deputy Director

Approved Gay E. Hooper  
 Date 6-26-59 Deputy Director Of Planning And Programing

Approved Wm J. Curran  
 Date 6-23-59 Engineer Of Bridges

Approved Wm J. Curran  
 Date 6-23-59 Engineer Of Location And Design

Approved C.W. McLaughlin  
 Date 6-22-59 Deputy Director Of Design And Construction

Approved Ed Berry  
 Date 6-26-59 First Assistant Director

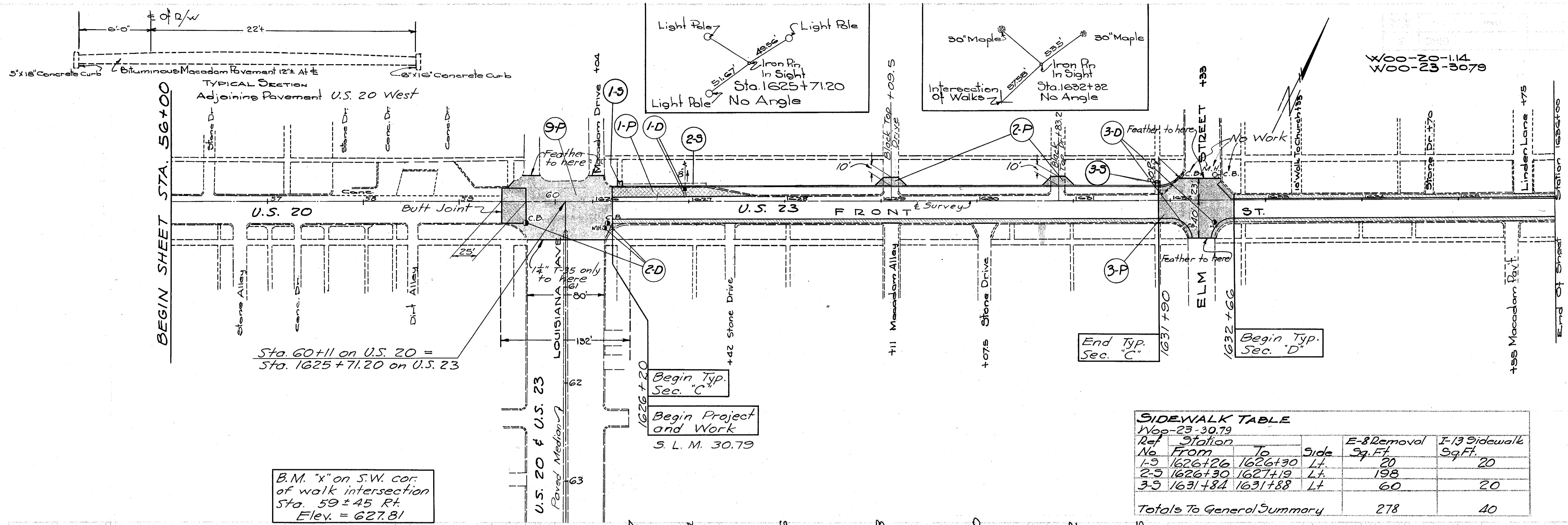
Approved E. J. Ruston  
 Date 6-26-59 Director Of Highways

STANDARD DRAWINGS	
DR-1	1-3-55
I-1,2,3,4,5	4-24-58
I-8CB No 6	1-26-59
I-12	7-1-54
L-1	4-1-50
L-3-A	4-1-50
T-35	1-2-56
L-3	4-1-50

SUPPLEMENTAL SPECIFICATIONS	
B-219	Rev 3-12-59

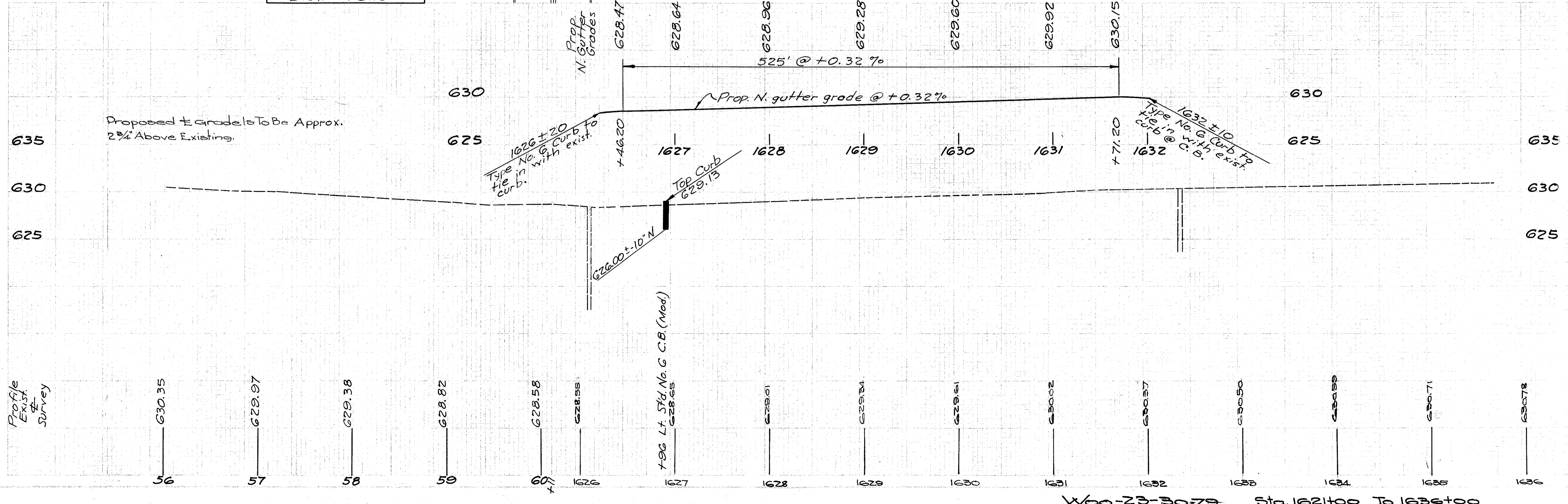
File No.	Wood County, Woo-20-1.14, Woo-23-30.79
Date Of Letting	_____
Contract Number	_____

SEP 20 1962  
GROUND PHOTOLAB

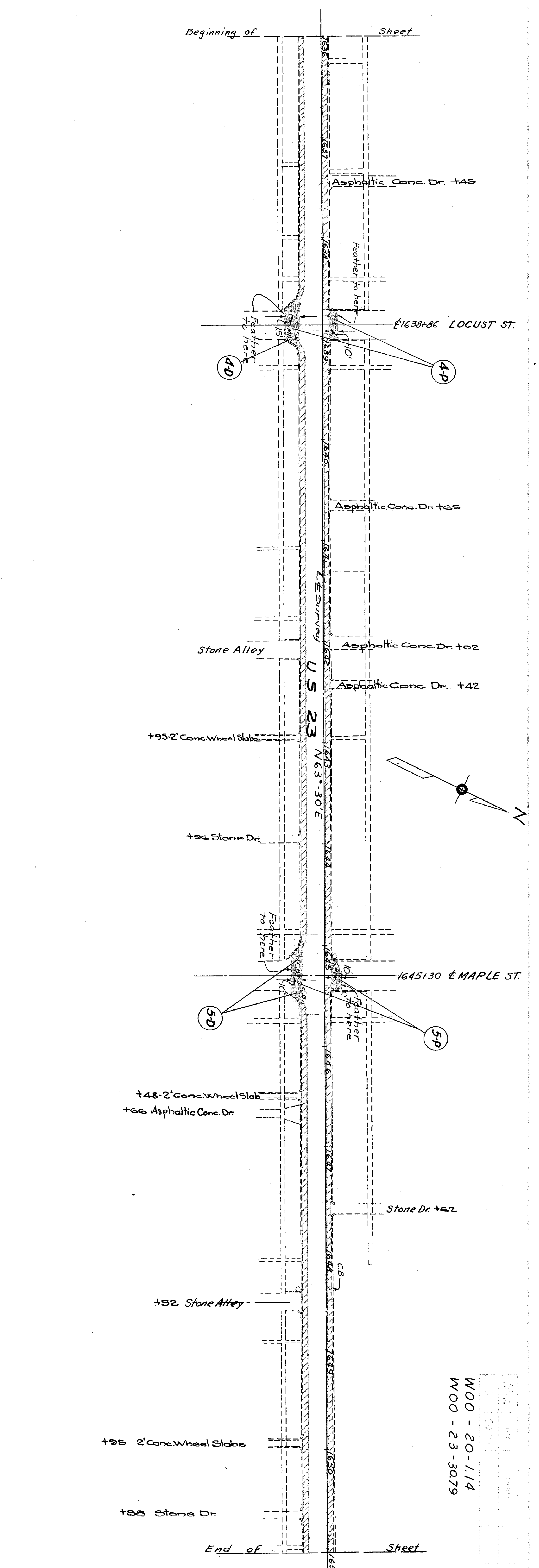
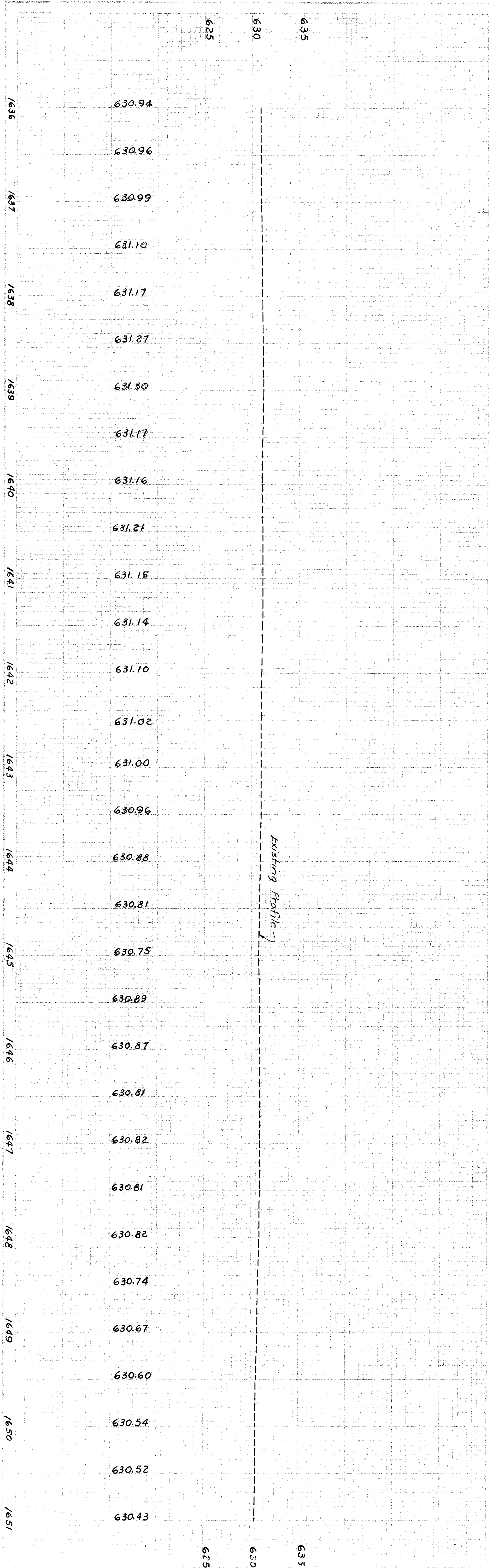


**SIDEWALK TABLE**  
W60-23-30.79

Ref No	Station From	Station To	Side	E-8 Removal Sq. Ft.	I-13 Sidewalk Sq. Ft.
1-5	1626+26	1626+30	Lt.	20	20
2-5	1626+30	1627+19	Lt.	198	
3-5	1631+84	1631+88	Lt.	60	20
Totals To General Summary				278	40







Sta. 1636+00 To Sta. 1651+00

W00 - 20-114  
W00 - 23-3079

