

Federal Road Dist. No.	STATE	Federal Aid Proj. No.	Fiscal Year
10	OHIO	91	

OHIO

FREMONT - PERRYSBURG I.C.H. 275

SECTIONS A & B

LAKE & TROY TOWNSHIPS

WOOD COUNTY, OHIO

CONSTRUCTION BUREAU
 JUL 29 1955
 GROUND PHOTOLAB

INDEX

PROFILES & PLANS...Pages 2 - 13
 CROSS SECTIONS...Pages 17 - 36
 DETAIL SHEETS.....Pages 1
 CULVERTS & DRAINAGE...Pages 14-16

SCALES

PLANS.....1" = 100'
 PROFILES...1" = 100' HORIZONTAL
 1" = 10' VERTICAL
 CROSS SECTIONS...1" = 5' Ver. & Hor.
 DETAILS.....1/2" = 1'

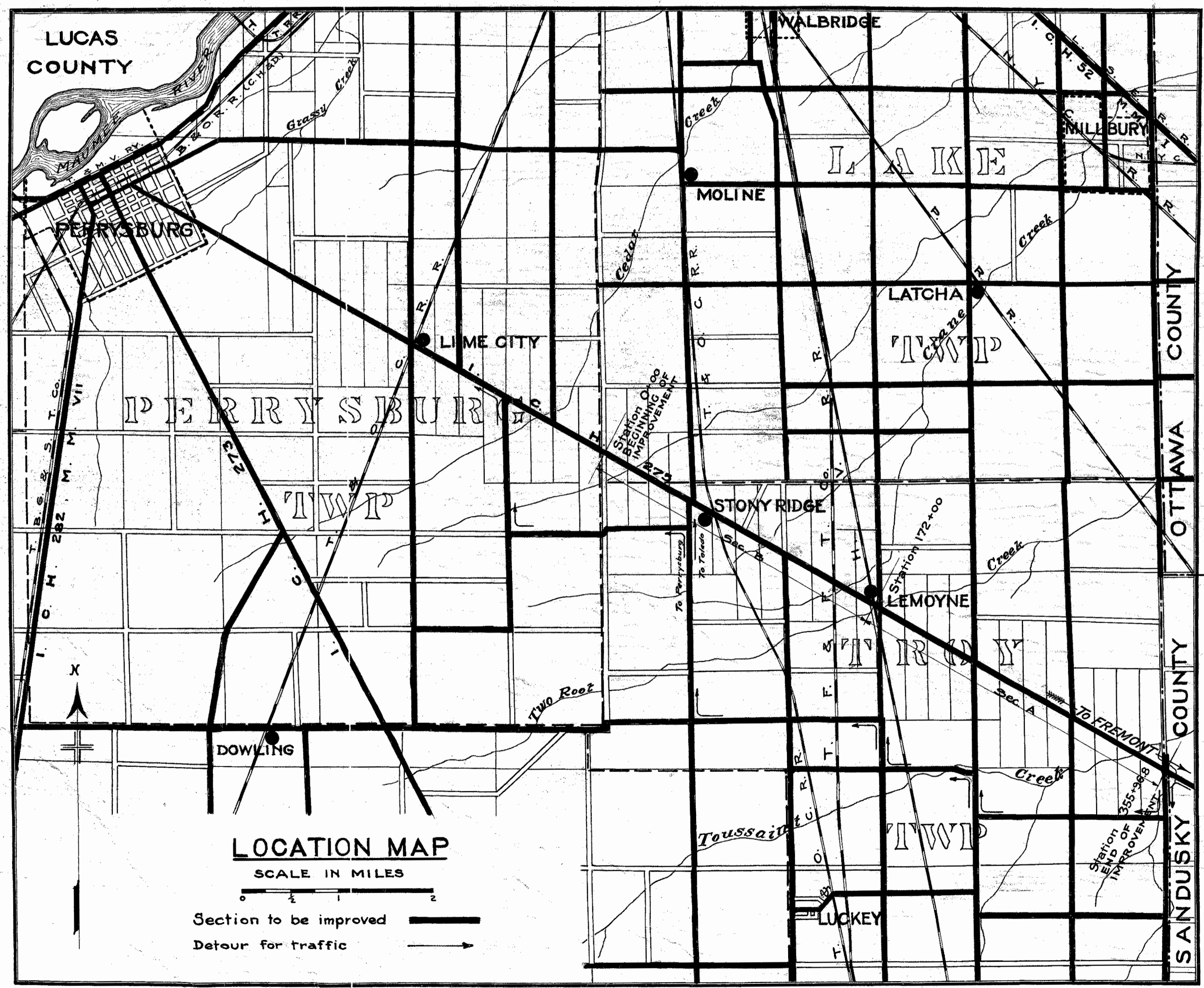
LEGEND

COUNTY LINES -----
 TOWNSHIP LINES -----
 CORPORATION LINES -----
 RAILROADS =====
 IMPROVED ROADS =====
 ROADS (UNIMPROVED) =====

SPECIFICATIONS

SPECIFICATIONS 1919 STATE HIGHWAY
 DEPARTMENT OF OHIO TO APPLY TO
 THIS IMPROVEMENT.

13. WOOD-275-A & B
 1919



We, the Commissioners of Wood County, Ohio, hereby approve these plans and certify that the right of way is available for the construction of this improvement.

APPROVED June 2, 1919

John A. Hanna WOOD COUNTY
W. W. Wallam COMMISSIONERS
W. C. Summing

John F. Gallier
 WOOD COUNTY SURVEYOR
 I hereby approve these plans and declare that the making of this improvement will require the closing to traffic of the highway, and that the detours will be indicated by signs as shown on the plans and estimates.

APPROVED 6-5-19

D. W. Seitz
 STATE DIV. ENGINEER

W. D. Banning 4/6/19
 STATE CHIEF HIGHWAY ENGR

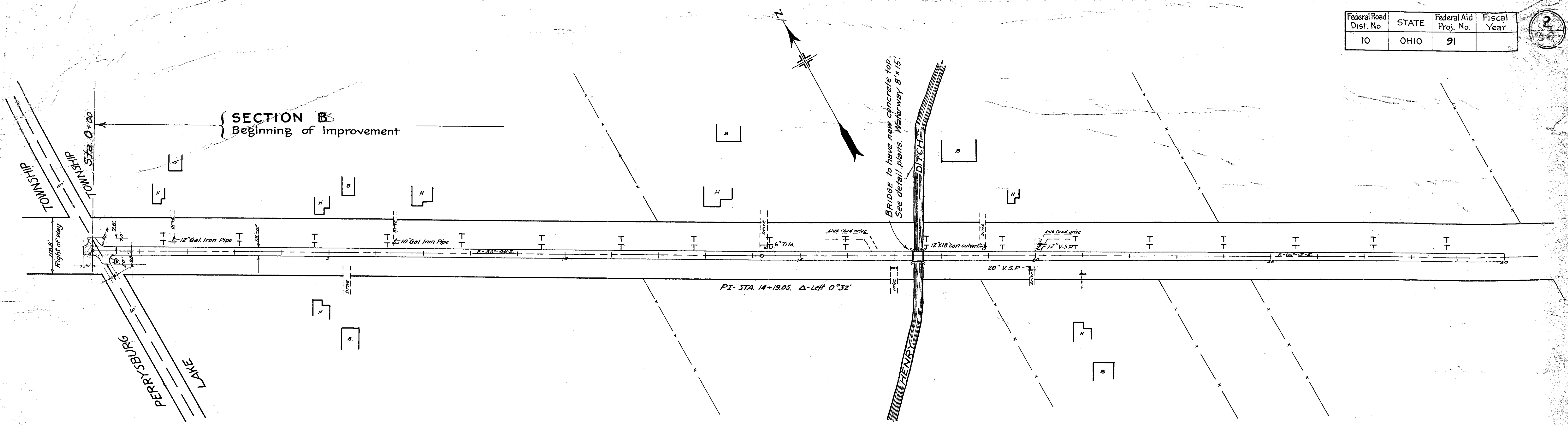
STATE HIGHWAY COMMISSIONER

APPROVED *Simon Cowan*

7-14-19

File #476

Federal Road Dist. No.	STATE	Federal Aid Proj. No.	Fiscal Year
10	OHIO	91	

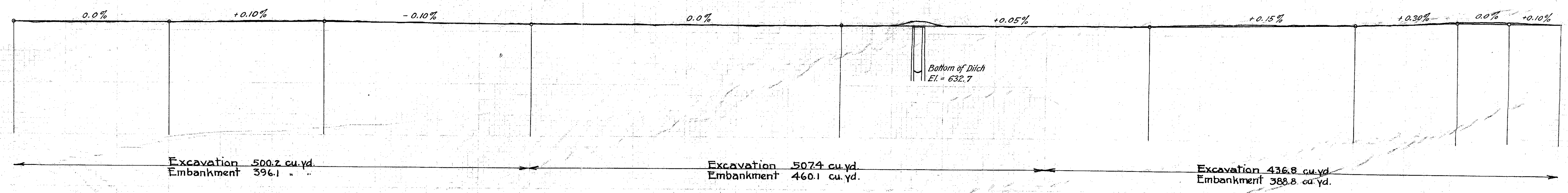


Station	Surface Elevation	Sub-Grade Elevation
0	641.54	641.55
1	641.44	641.55
2	641.54	641.55
3	641.54	641.55
4	641.74	641.65
5	641.94	641.75
6	641.94	641.85
7	641.74	641.75
8	641.64	641.65
9	641.54	641.55
10	641.52	641.45
11	641.62	641.45
12	641.52	641.45
13	641.42	641.45
14	641.32	641.45
15	641.32	641.45
16	641.42	641.45
17	641.62	641.50
18	641.52	641.55
19	641.54	641.60
20	641.64	641.65
21	641.64	641.70
22	641.84	641.75
23	642.04	641.90
24	642.14	642.05
25	642.24	642.20
26	642.34	642.35
27	642.67	642.65
28	643.07	642.95
29	643.07	642.95
30	642.97	643.05

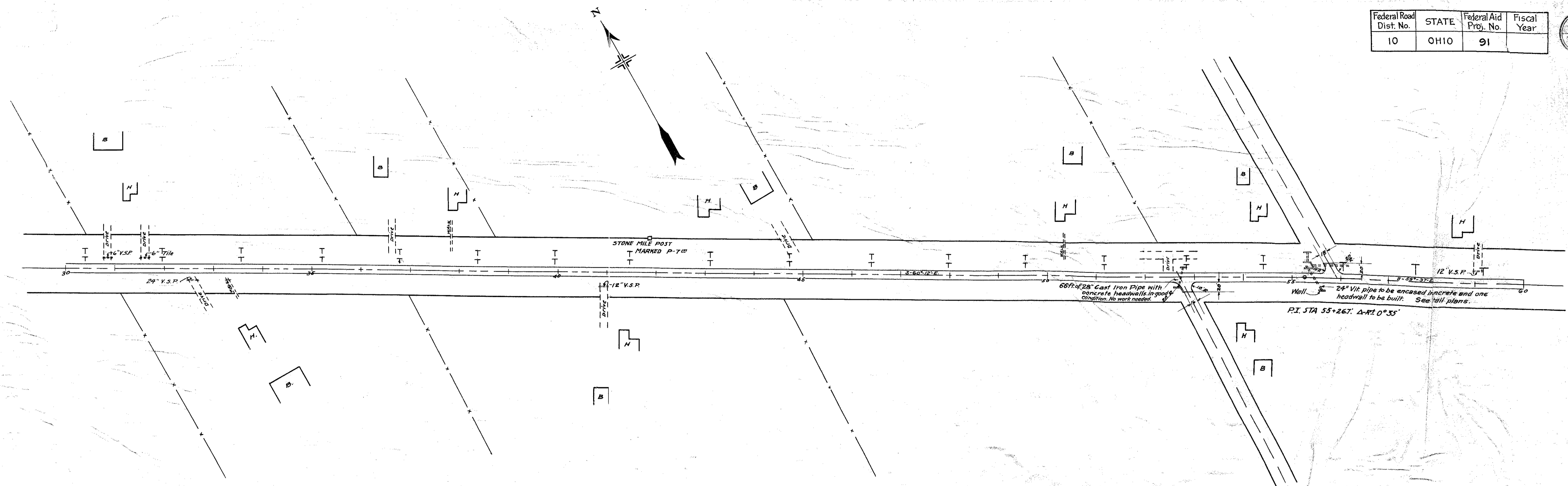
NOTE:- SURFACE ELEVATIONS REPRESENT THE SURFACE AT THE CENTER OF THE PRESENT ROADWAY.
SUB-GRADE ELEVATIONS REPRESENT THE SURFACE AT THE CENTER OF THE ROADWAY AFTER PRESENT SURFACE HAS BEEN MADE READY FOR 4" MACADAM COURSE.

650

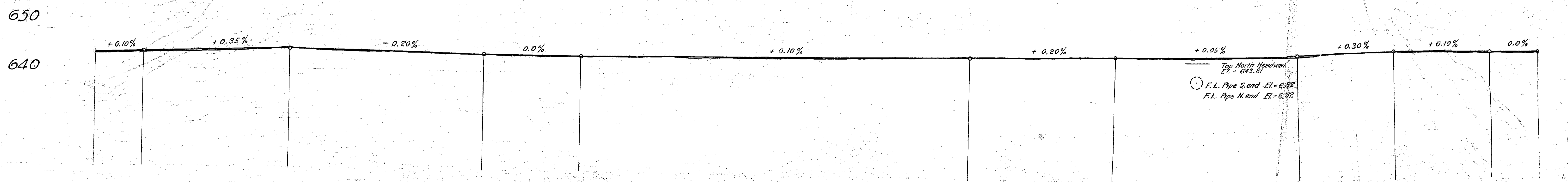
640



Federal Road Dist. No.	STATE	Federal Aid Proj. No.	Fiscal Year
10	OH10	91	



Station	Surface Elevation	Subgrade Elevation
30	643.97	643.05
1	643.07	643.15
2	643.47	643.50
3	643.87	643.85
4	644.27	644.20
35	643.97	644.00
6	643.82	643.80
7	643.52	643.60
8	643.42	643.40
9	643.32	643.40
40	643.42	643.40
1	643.22	643.50
2	643.32	643.60
3	643.62	643.70
4	643.72	643.80
45	643.82	643.90
6	643.92	644.00
7	644.02	644.10
8	644.12	644.20
9	644.22	644.30
50	644.62	644.60
1	644.72	644.80
2	644.72	644.85
3	644.82	644.90
4	644.92	644.95
5	644.92	645.00
6	645.42	645.30
7	645.62	645.60
8	645.72	645.70
9	645.72	645.80
60	645.82	645.80

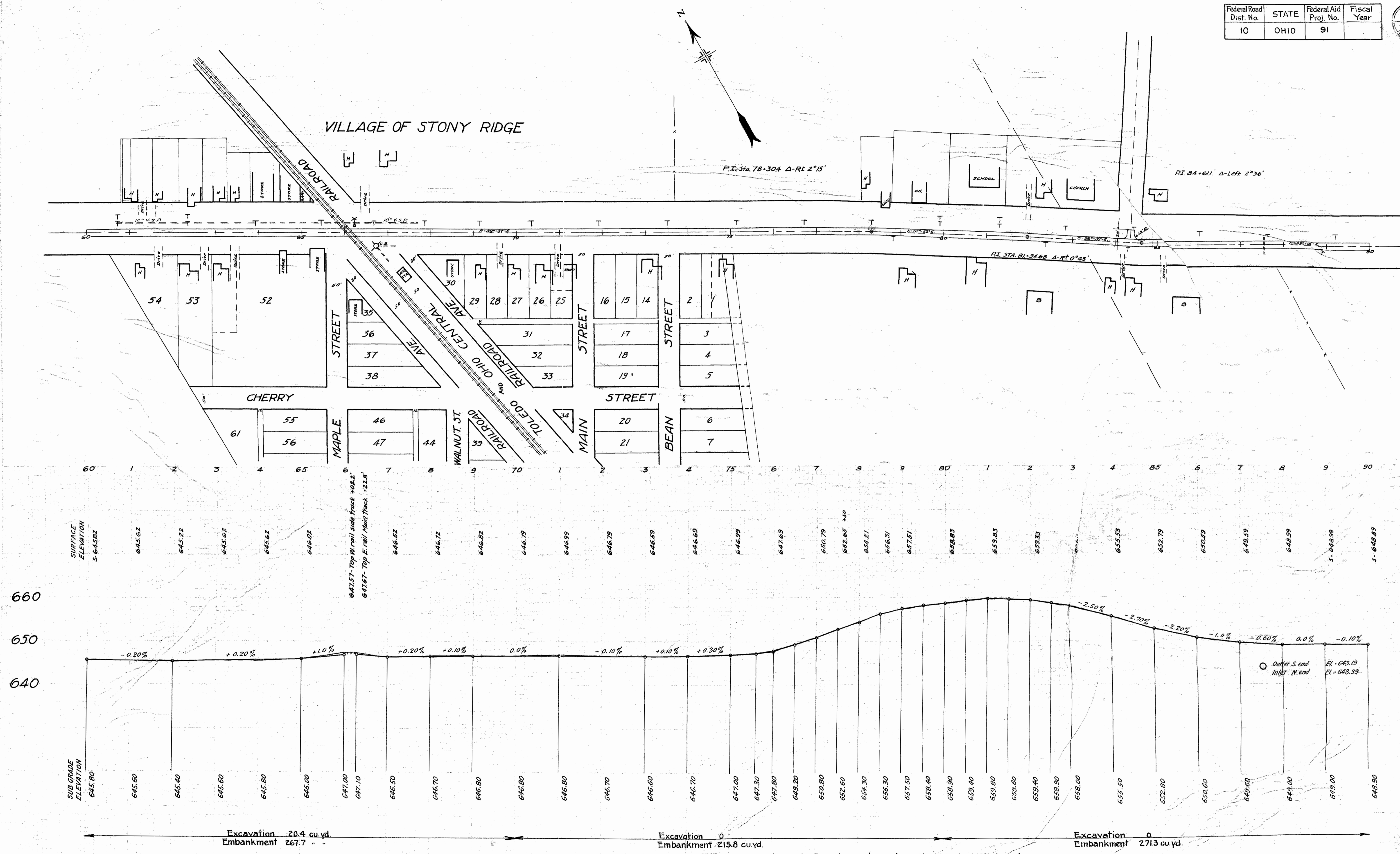


Excavation 412.7 cu.yds.
Embankment 362.0 cu.yds.

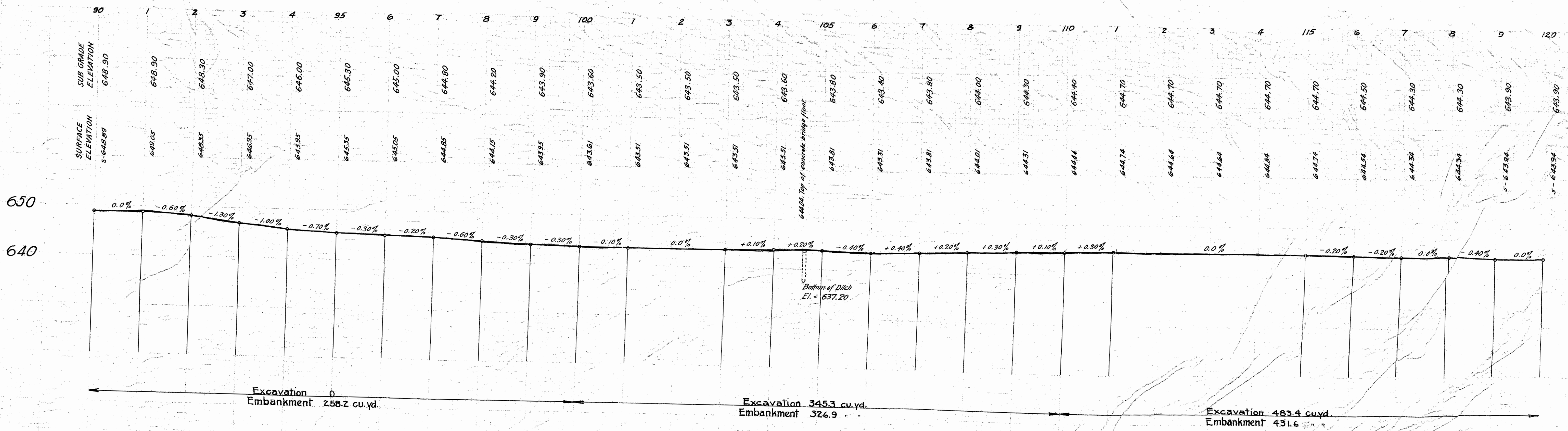
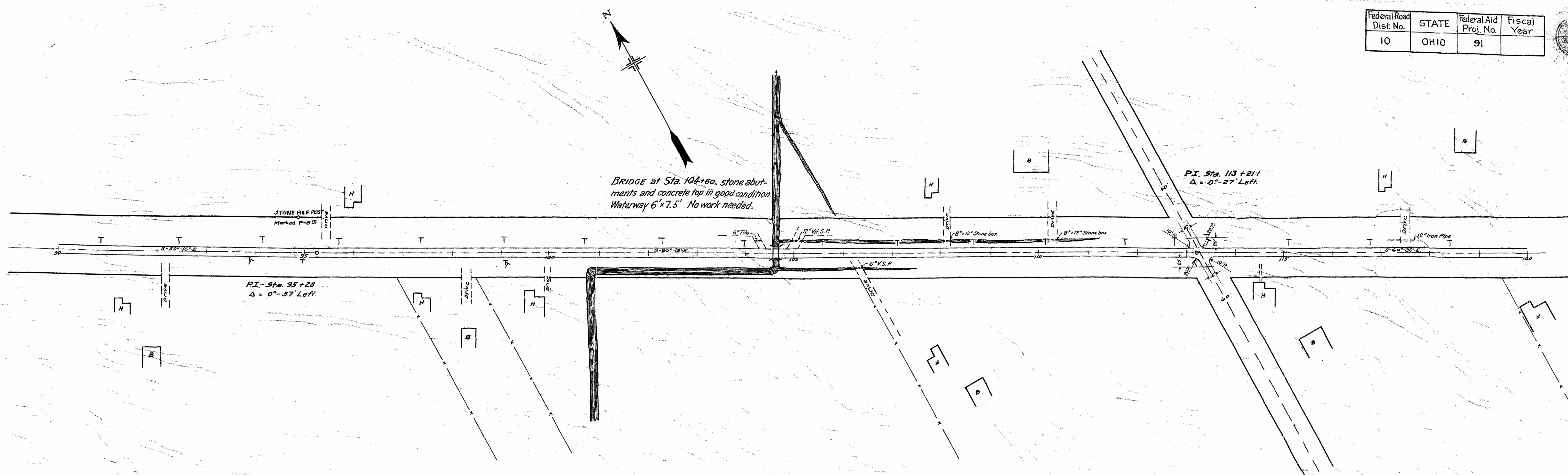
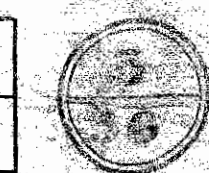
Excavation 405.6 cu.yd.
Embankment 350.9 "

Excavation 374.0 cu.yd.
Embankment 321.2 "

Federal Road Dist. No.	STATE	Federal Aid Proj. No.	Fiscal Year
10	OHIO	91	



Federal Road Dist. No.	STATE	Federal Aid Proj. No.	Fiscal Year
10	OHIO	91	



Station	Surface Elevation	Sub-Grade Elevation	Grade
120	5 643.94	643.90	
1	643.94	643.90	
2	643.94	643.90	0.0%
3	643.94	643.90	
4	643.94	643.90	
125	643.84	643.87	-0.33%
6	643.84	643.83	
7	643.84	643.80	-0.40%
8	643.64	643.70	+0.20%
9	643.94	643.90	
130	643.94	644.00	+0.10%
1	643.94	644.10	0.0%
2	644.24	644.20	-0.22%
3	644.24	644.20	
4	644.04	644.00	-0.22%
135	643.84	643.80	+0.10%
6	643.89	643.90	0.0%
7	643.89	643.90	
8	644.09	644.00	+0.10%
9	643.99	644.00	
140	644.09	644.00	0.0%
1	643.99	644.00	
2	644.09	644.00	
3	643.99	644.00	-0.22%
4	5 643.83	643.80	-0.30%
145	643.53	643.50	-0.40%
6	643.13	643.10	-0.20%
7	642.93	642.90	0.0%
8	642.93	642.90	+0.30%
9	5 643.13	643.20	0.0%
150	5- 643.23	643.20	

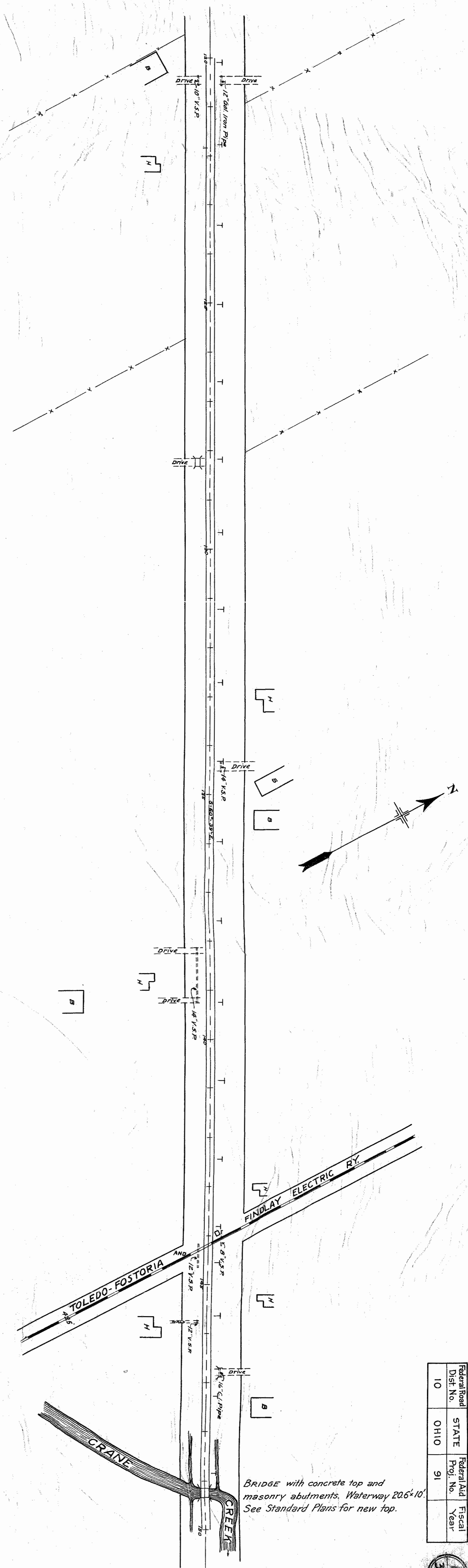
Excavation 646.3 cu.yd
Embankment 587.1

Excavation 490.6 cu.yd
Embankment 438.9

Excavation 627.6 cu.yd
Embankment 546.4

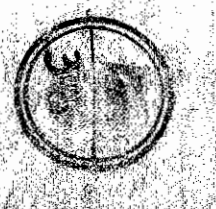
Bottom of Ditch
E1 - 632.33

643.83 TOP OF RAIL +159
643.38 TOP OF RAIL +159
TRUCK IS TO BE RAISED BY RY.
COMPANY TO CONFORM TO ROAD
GRADE.
643.53



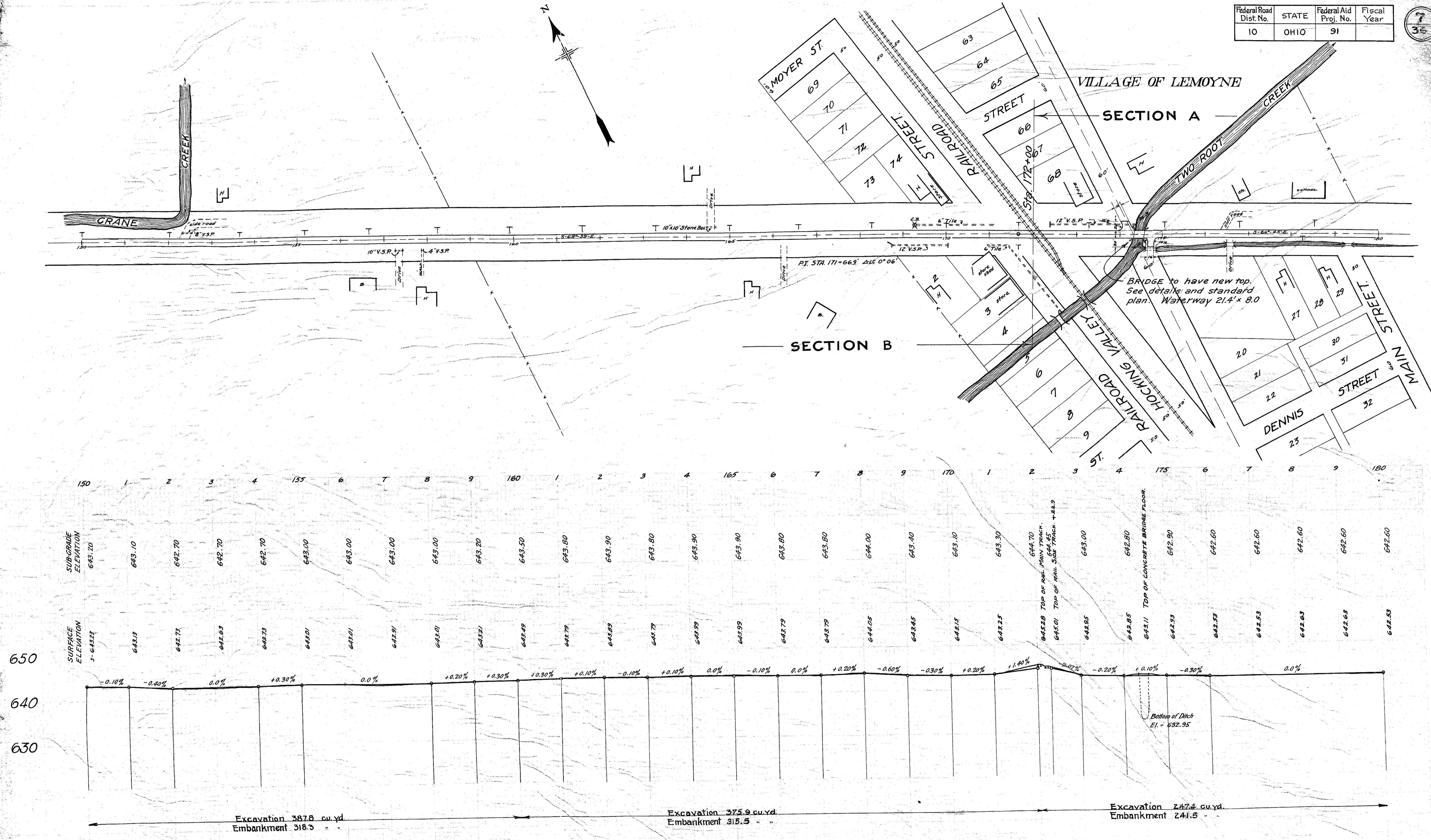
BRIDGE with concrete top and masonry abutments. Waterway 20.6'-10". See Standard Plans for new top.

Federal Road Dist No.	STATE	Federal Aid Proj No.	Fiscal Year
10	OHIO	91	

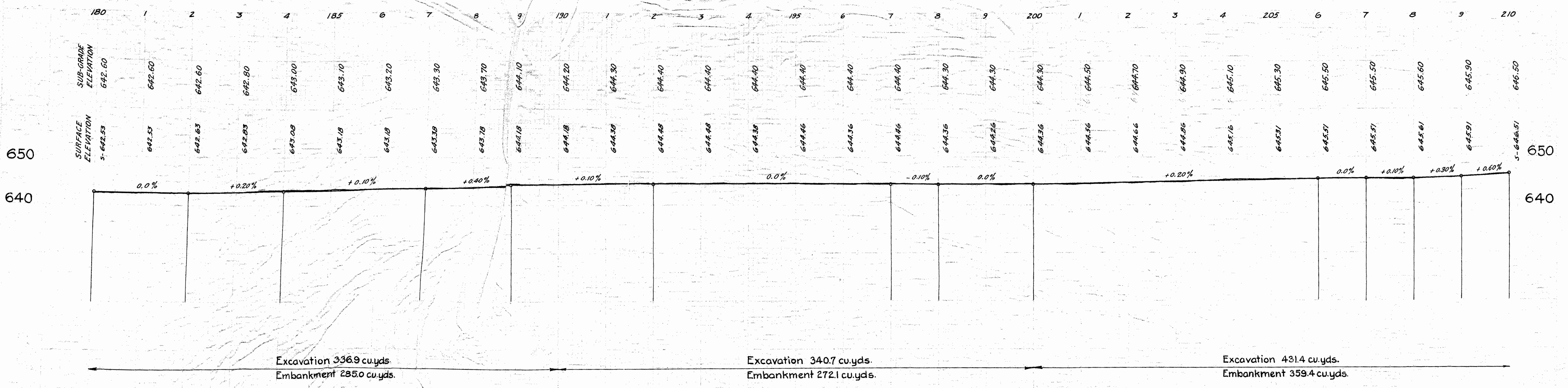
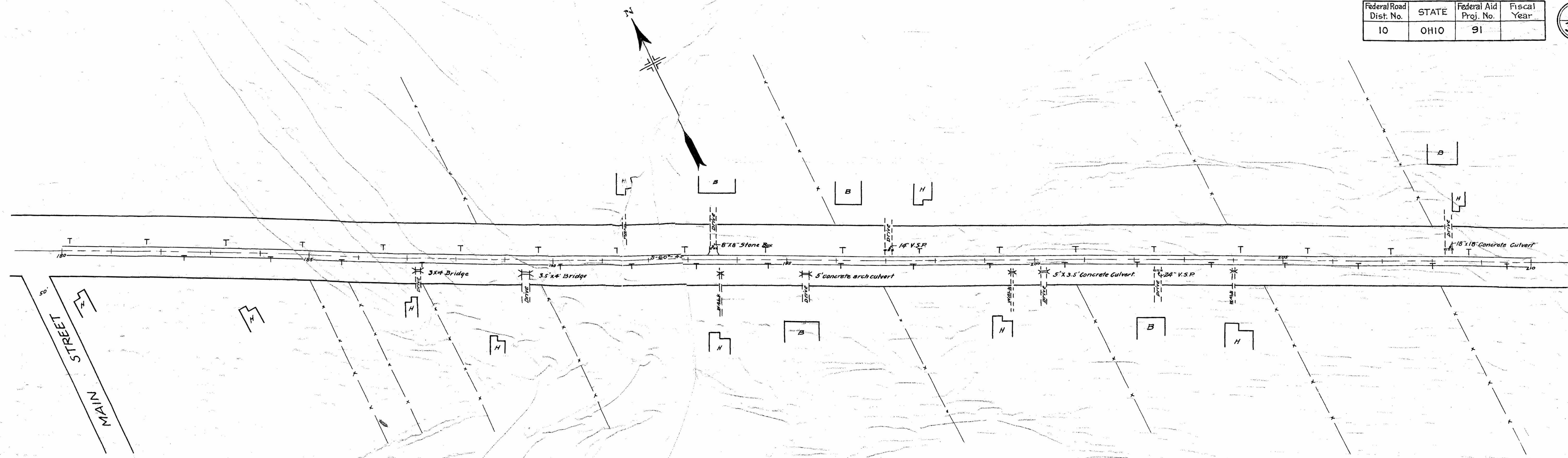


Federal Road Dist. No.	STATE	Federal Aid Proj. No.	Fiscal Year
10	OHIO	91	

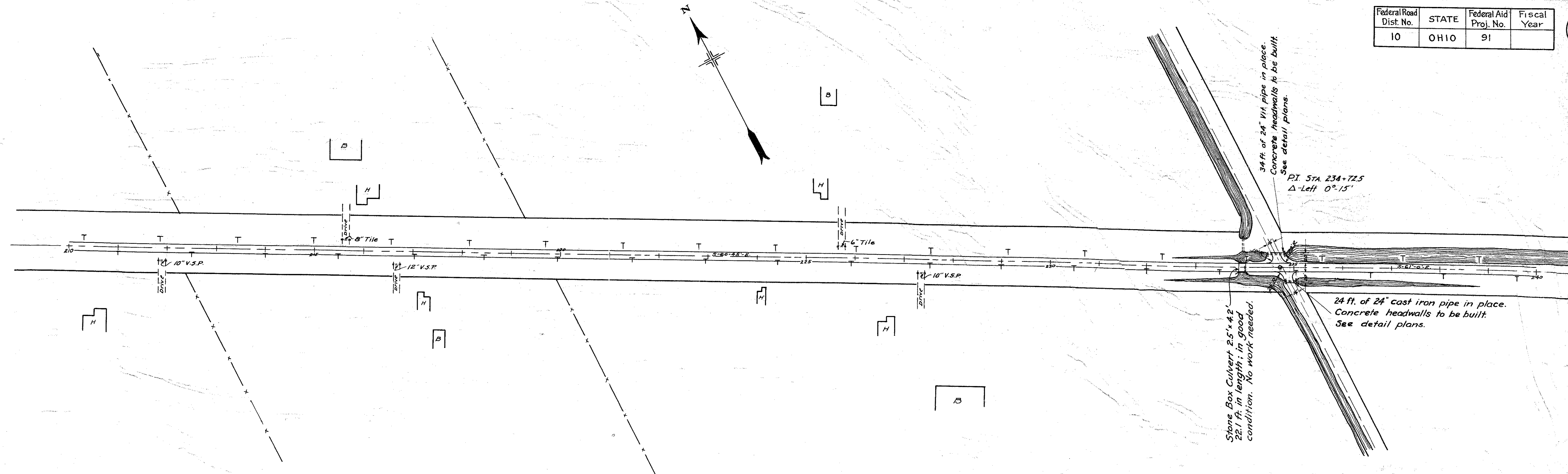
7
36



Federal Road Dist. No.	STATE	Federal Aid Proj. No.	Fiscal Year
10	OHIO	91	



Federal Road Dist. No.	STATE	Federal Aid Proj. No.	Fiscal Year
10	OHIO	91	



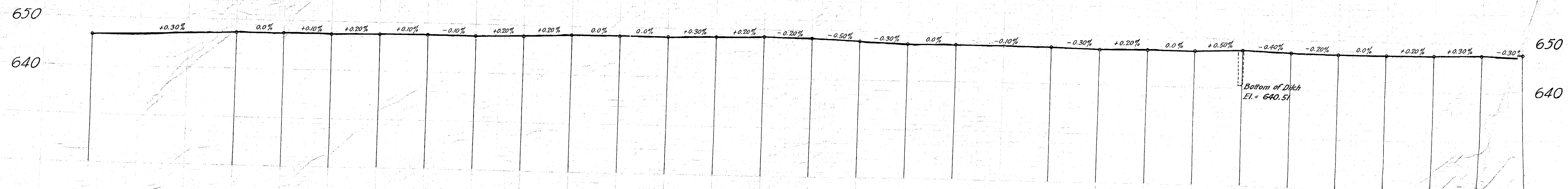
34 ft. of 24\"/>

PI STA 234+72.5
Δ-Left 0°-15'

Stone Box Culvert 2.5' x 4.2'
22.1 ft. in length; in good
condition. No work needed.

24 ft. of 24\"/>

210	1	2	3	4	215	6	7	8	9	220	1	2	3	4	225	6	7	8	9	230	1	2	3	4	235	6	7	8	9	240
SUB-GRADE ELEVATION 646.50	646.80	647.10	647.40	647.40	647.50	647.70	647.80	647.70	647.90	648.10	648.10	648.40	648.60	648.40	648.40	647.90	647.60	647.60	647.50	647.40	647.10	647.30	647.30	647.80	647.40	647.20	647.20	647.40	647.70	647.40
SURFACE ELEVATION 5'-646.51	646.91	647.11	647.41	647.41	647.51	647.71	647.81	647.71	647.91	648.11	648.11	648.45	648.65	648.45	647.95	647.55	647.65	647.55	647.45	647.11	647.31	647.31	647.81	647.41	647.21	647.21	647.41	647.71	647.41	



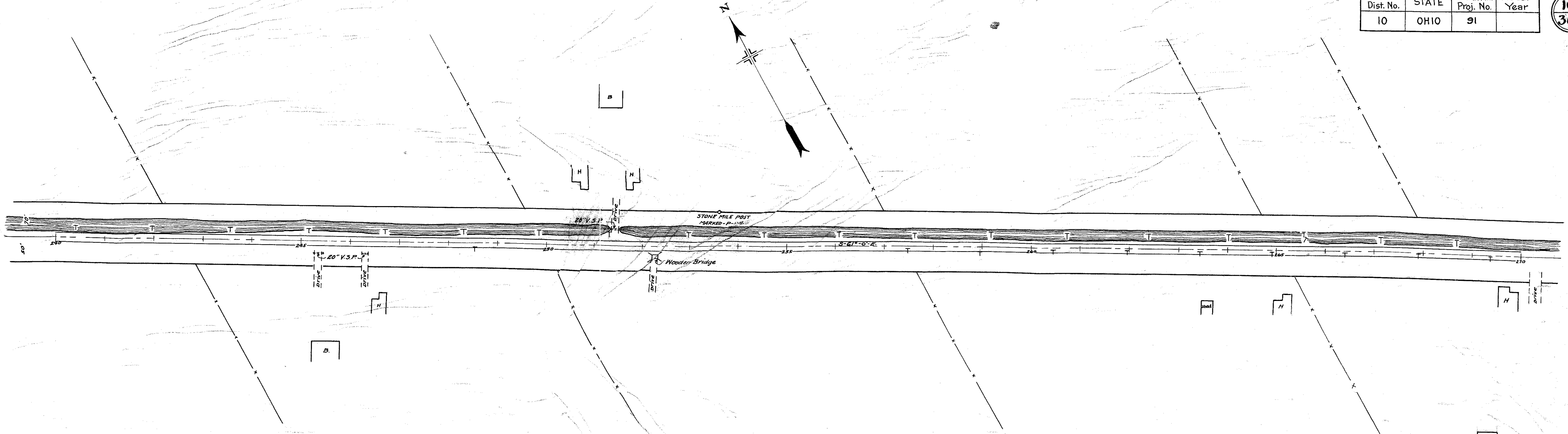
Excavation 425.9 cu.yds.
Embankment 353.7 cu.yds.

Excavation 600.0 cu.yds.
Embankment 537.9 cu.yds.

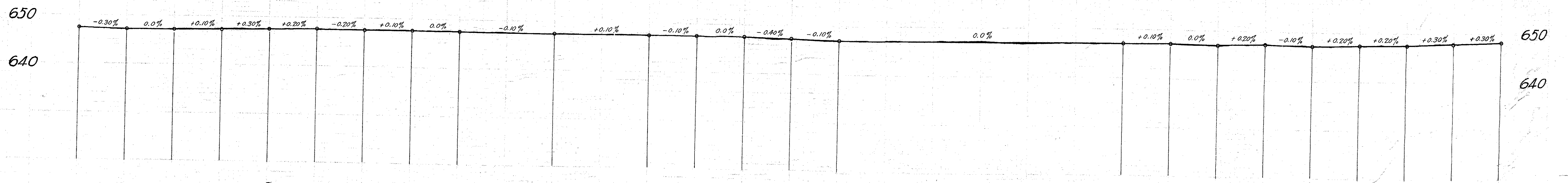
Excavation 560.4 cu.yds.
Embankment 491.8 cu.yds.

Federal Road Dist. No.	STATE	Federal Aid Proj. No.	Fiscal Year
10	OHIO	91	

10
36



Station	1	2	3	4	245	6	7	8	9	250	1	2	3	4	255	6	7	8	9	260	1	2	3	4	265	6	7	8	9	270
SUB-GRADE ELEVATION	647.90	647.10	647.10	647.20	647.50	647.70	647.50	647.60	647.60	647.50	647.40	647.50	647.60	647.50	647.10	647.00	647.00	647.00	647.00	647.00	647.00	647.00	647.10	647.10	647.30	647.20	647.40	647.60	647.90	648.20
SURFACE ELEVATION	5-647.45	647.15	647.15	647.25	647.55	647.75	647.55	647.67	647.67	647.47	647.37	647.47	647.67	647.54	647.14	647.04	647.04	647.04	647.14	646.94	647.03	647.03	647.23	647.03	647.33	647.23	647.43	647.63	647.96	5-648.16

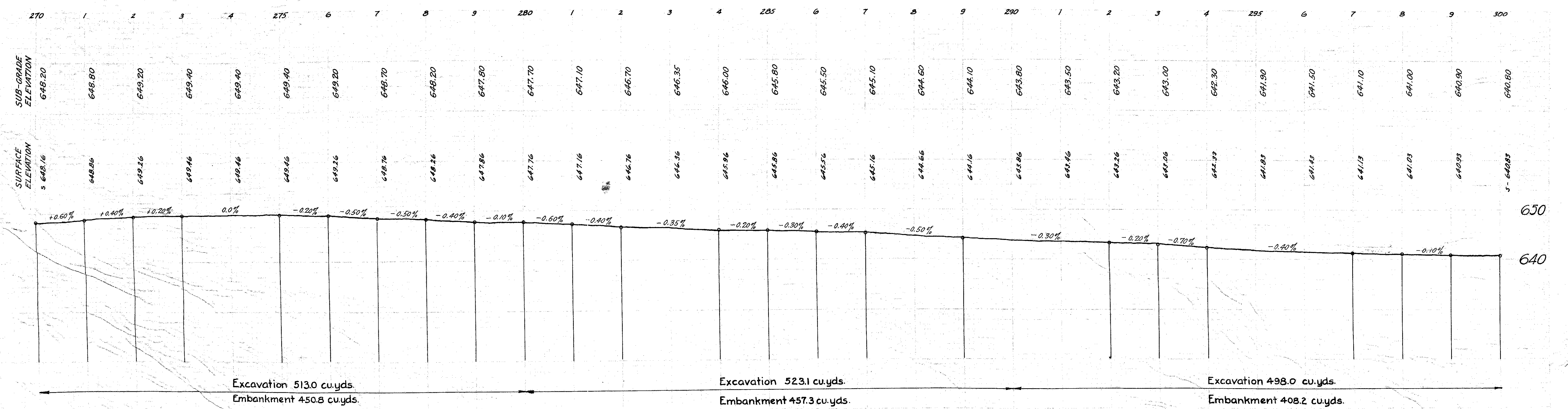
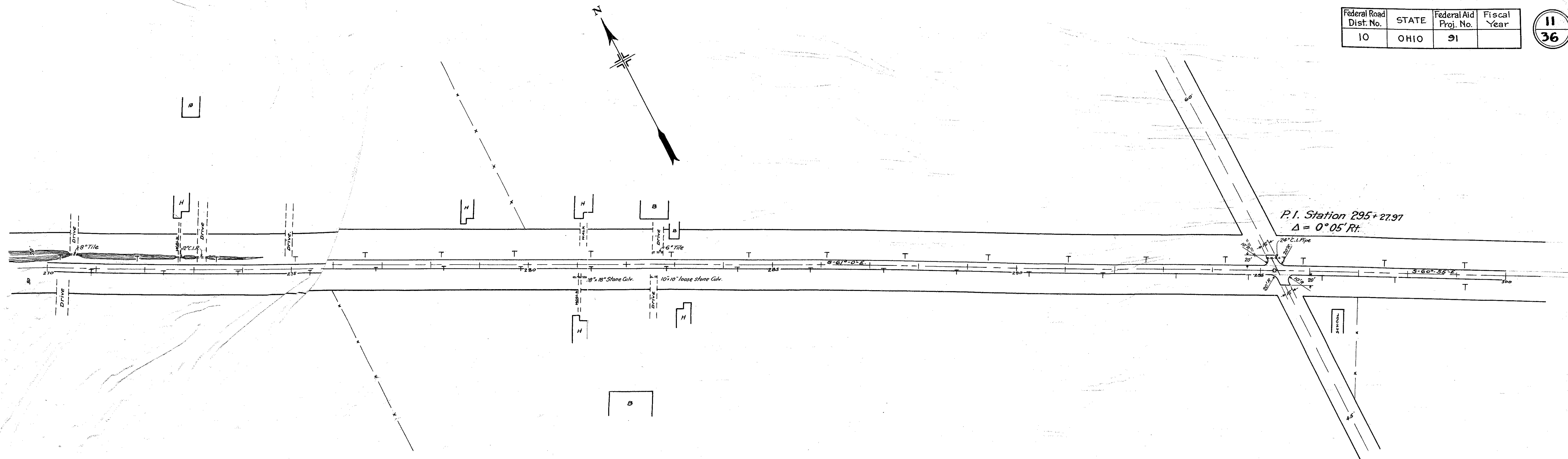


Excavation 396.3 cu.yds.
Embankment 320.2 cu.yds.

Excavation 388.0 cu.yds.
Embankment 339.8 cu.yds.

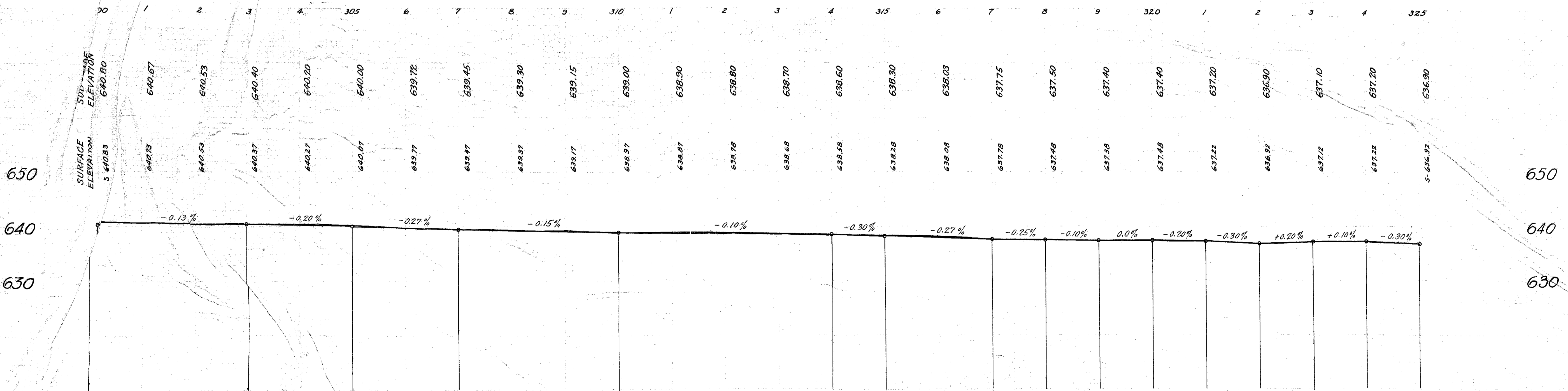
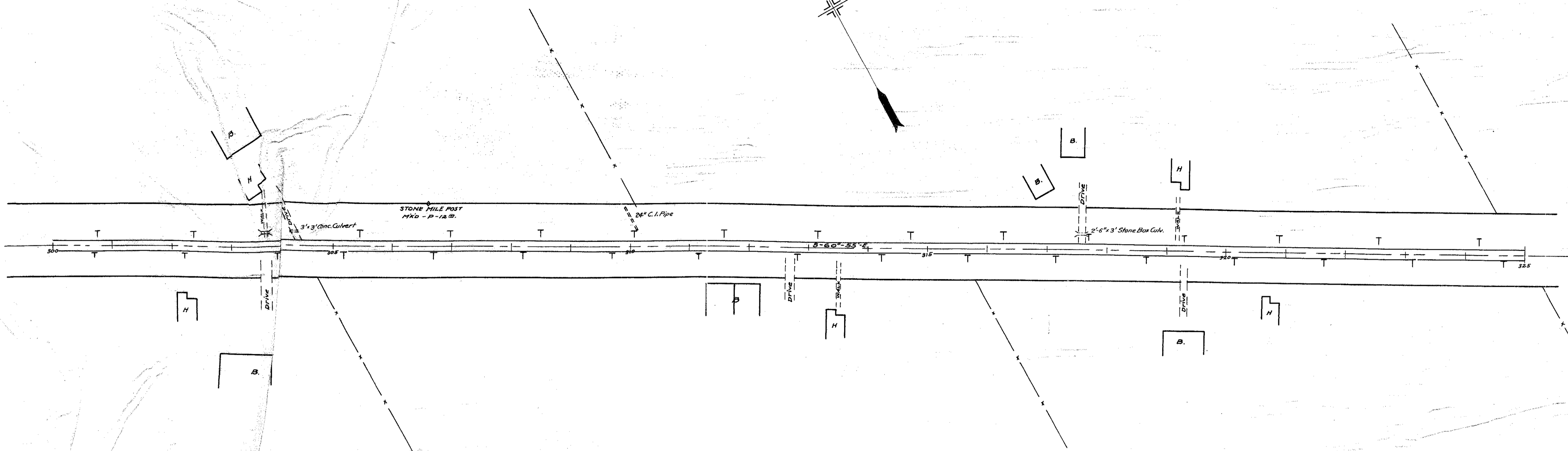
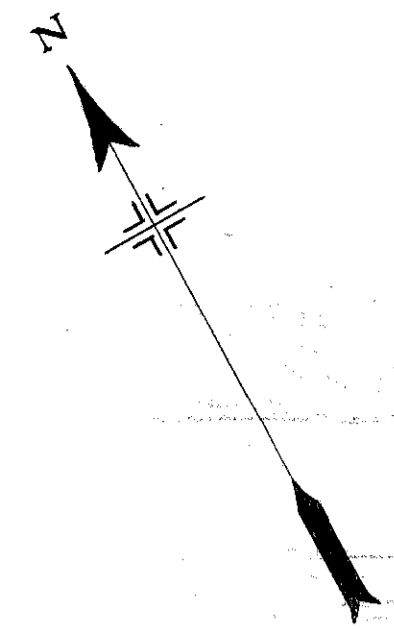
Excavation 383.4 cu.yds.
Embankment 315.7 cu.yds.

Federal Road Dist. No.	STATE	Federal Aid Proj. No.	Fiscal Year
10	OHIO	91	



Federal Road Dist. No.	STATE	Federal Aid Proj. No.	Fiscal Year
10	OHIO	91	

12
36



Excavation 600.0 cu.yds.
Embankment 514.7 cu.yds.

Excavation 441.6 cu.yds.
Embankment 328.6 cu.yds.

Federal Road Dist. No.	STATE	Federal Aid Proj. No.	Fiscal Year
10	OHIO	91	

