

SEC. 9 T-6-N R-12-E TROY TWP.

**US 20**  
**WOOD COUNTY**  
**SH. 275 SECS. A(PT.) & B(PT.)**  
**R/W PLANS**

DATE: Nov. 29, 1940. DRAWN BY: HH  
 REVISED Jan. 16, 1941 R.S.H.  
 LENGTH OF PROJECT = 3040 FT. = 0.575 MI.

85  
HENRY B. HERMAN  
0.38 Ac.

84  
IRVINE H. & EUNICE HAAR  
0.35 Ac.

SEC. 9 T-6-N R-12-E TROY TWP.  
SEC. 9 T-6-N R-12-E TROY TWP.

88  
OSCAR DENNIS  
1.31 Ac.

90  
HARRY CRAIG  
0.37 Ac.

87  
MARY TIENAREND  
1.63 Ac.

SEC. 9 T-6-N R-12-E TROY TWP.

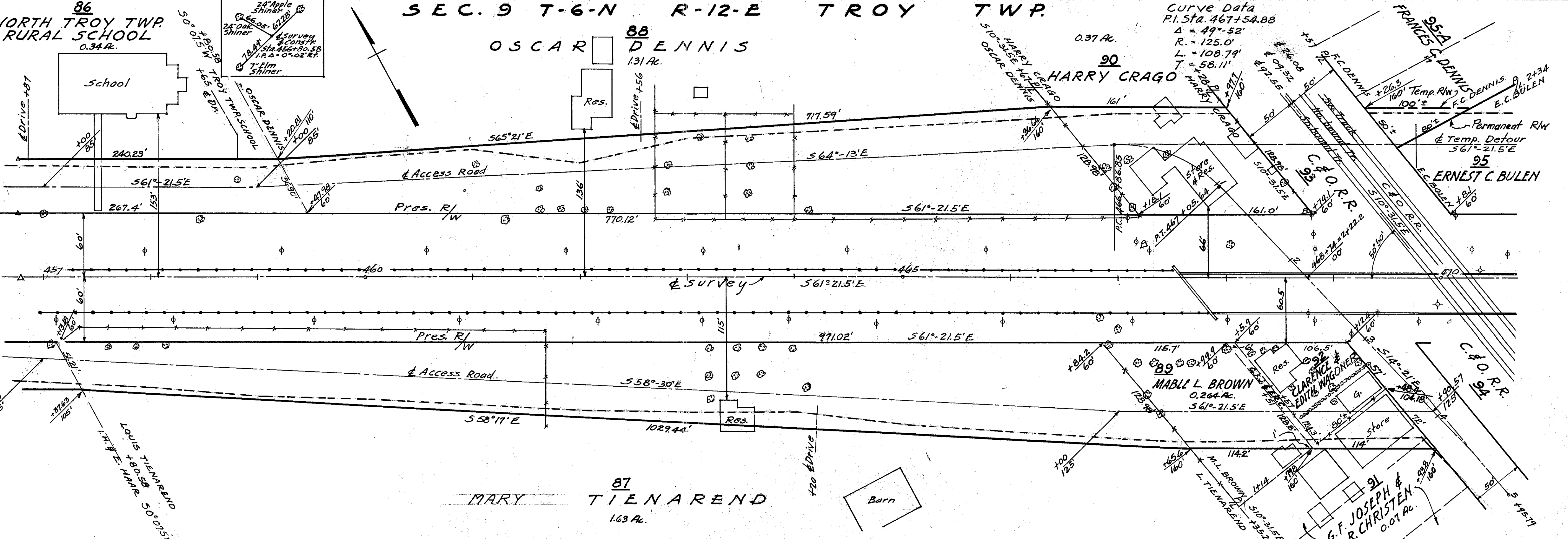
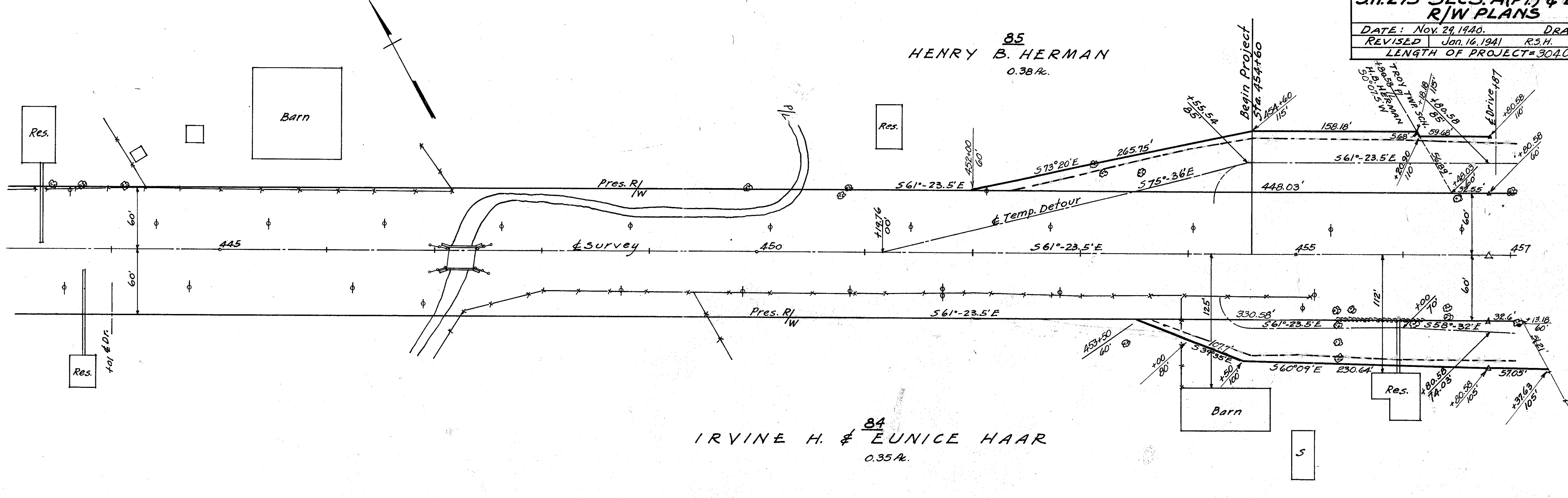
86  
NORTH TROY TWP.  
RURAL SCHOOL  
0.34 Ac.

Curve Data  
P.I. Sta. 467+54.88  
Δ = 49°-52'  
R = 125.0'  
L = 108.79'  
T = 58.11'

95A  
FRANCIS C. DENNIS  
E.C. BULEN  
95  
ERNEST C. BULEN

89  
MABLE L. BROWN  
0.264 Ac.  
561°-21.5'E

91  
G.F. JOSEPH &  
E.R. CHRISTEN  
0.07 Ac.

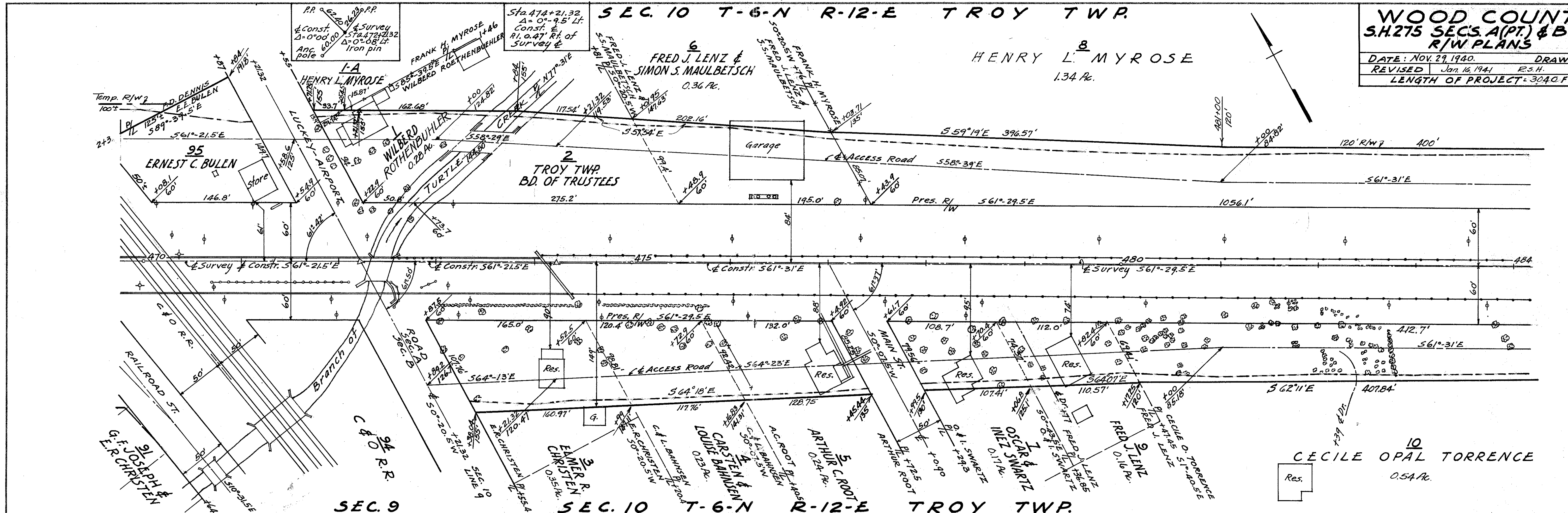




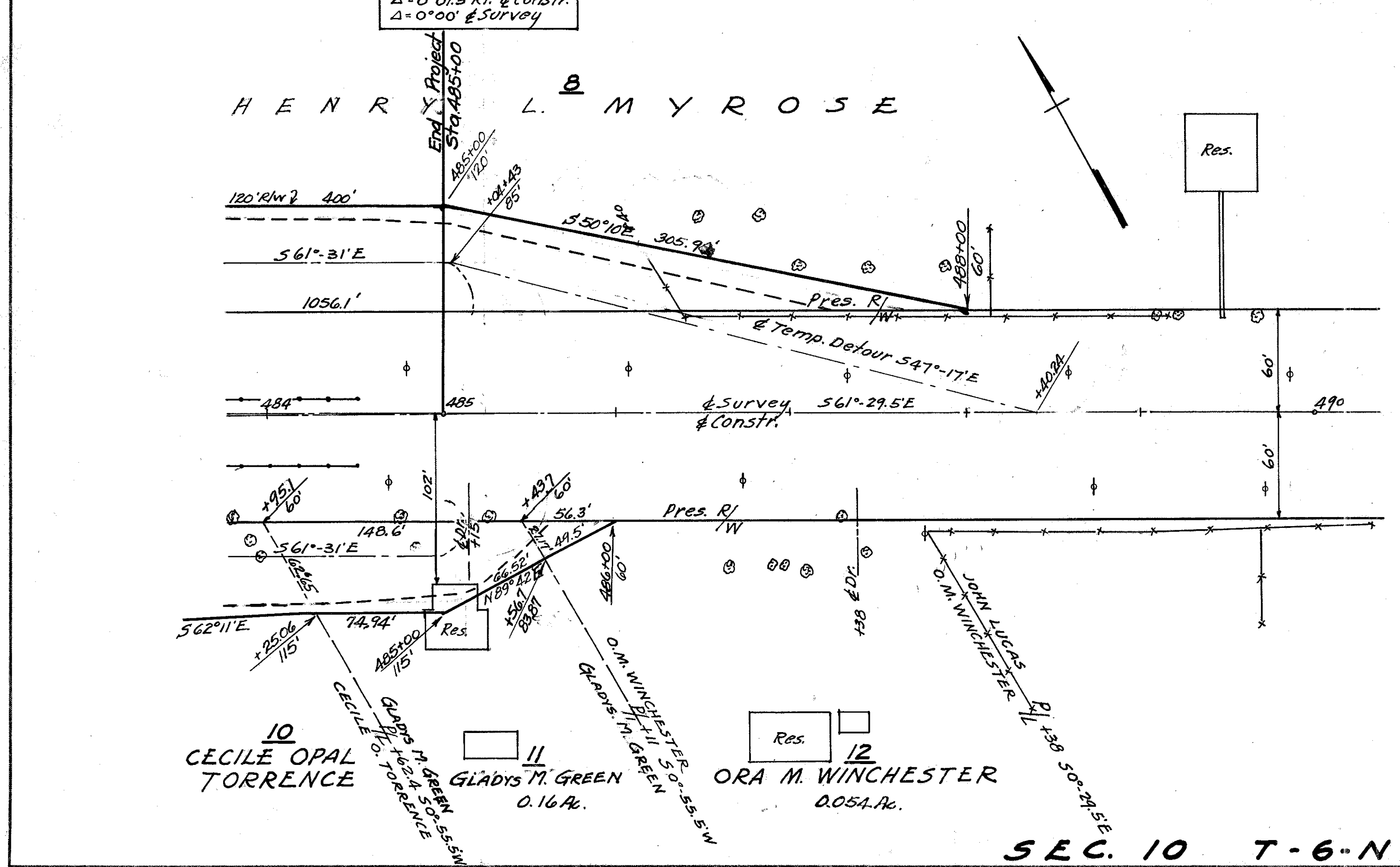
SEC. 10 T-6-N R-12-E TROY TWP.

**WOOD COUNTY**  
 S.H. 275 SEC'S A(P.T.) & B(P.T.)  
 R/W PLANS

DATE: NOV. 29, 1940. DRAWN BY: HH  
 REVISED Jan. 16, 1941 E.S.H.  
 LENGTH OF PROJECT = 3040 FT. = 0.575 MI.

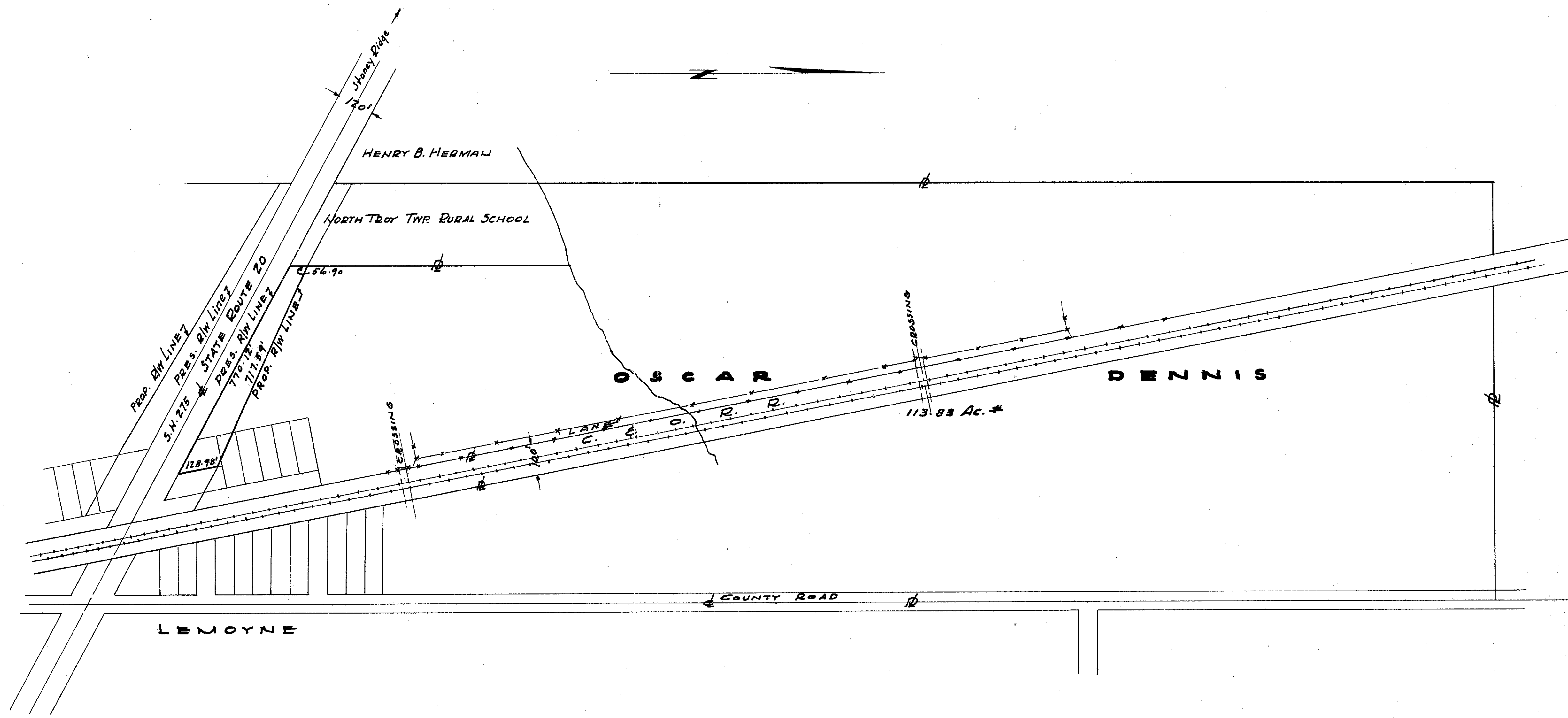


SEC. 10 T-6-N R-12-E TROY TWP.



453+22 12" Poplar 74'Lt.	466+87 15" Maple 104'Lt.	473+46 4" Walnut 51'RT.	479+19 6" Plum 119'RT.	481+52 4" Walnut 61'RT.
+57 6" Apple 74'RT.	+41 9" Plum 64'RT.	+70 6" Maple 60'RT.	+41 9" Maple 60'RT.	+52 4" Hickory 39'RT.
455+37 15" Poplar 52'RT.	+77 15" Maple 85'Lt.	+94 6" Jap. Elm 69'RT.	+76 3" Apple 64'RT.	+57 5-12" Cottonwood 42'RT.
+37 15" Poplar 67'RT.	+98 12" Pine 101'Lt.	474+43 11" Plum 43'RT.	+86 5" Apple 83'RT.	+58 4" Walnut 61'RT.
+37 15" Poplar 82'RT.	467+00 4" Plum 48'RT.	+44 6" Jap. Elm 72'RT.	+94 5" Plum 59'RT.	+71 9" Cottonwood 45'RT.
+37 15" Poplar 97'RT.	+08 12" Birch 110'Lt.	+69 3" Beech 90'RT.	+94 6" Apple 102'RT.	+72 9" Cottonwood 45'RT.
+51 15" Poplar 52'RT.	+14 18" Elm 67'Lt.	+71 9" Apple 103'RT.	+99 3" Maple 72'RT.	+74 4-3" Hickories 38'RT.
+70 5" Blue Spruce 86'RT.	+18 15" Buckeye 78'RT.	+96 10" Apple 62'RT.	480+06 3" Elm 67'RT.	+75 3-4" Catalpas 82'RT.
456+08 6" Cherry 65'RT.	+28 12" Maple 110'RT.	475+18 15" Wild Plum 62'RT.	+17 9" Cottonwood 68'RT.	+75 6" Box Elders 82'RT.
+40 10" Poplar 52'RT.	+32 15" Maple 80'RT.	+28 6" Quince 66'RT.	+20 4" Cottonwood 64'RT.	+78 17" Walnut 65'RT.
+40 10" Elm 58'RT.	+40 20" Maple 128'RT.	+35 18" Pear 106'RT.	+22 3" Cottonwood 63'RT.	482+00 12"(5-5)Wh Ash 63'RT.
+80 24" Oak 52'Lt.	+48 20" Catalpa 112'Lt.	+42 11" Pear 69'RT.	+24 6" Twin Ash 89'RT.	+00 to +50 28-2" to 6"
457+00 24" Apple 60'Lt.	+57 18" Maple 80'RT.	+51 11" Apple 87'RT.	+24 11" Cottonwood 78'RT.	Locusts 45' to 65'RT.
+09 10" Poplar 63'RT.	+66 21" Buckeye 80'RT.	+68 3" Peach 47'RT.	+26 6" Cottonwood 60'RT.	+00 to +50 33-2" to 7"
+60 3" Box Elder 65'RT.	468+00 15" Maple 66'RT.	+77 10" Pear 61'RT.	+26 6" Cottonwood 63'RT.	Locusts 80' to 115'RT.
+85 3-3" Box Elders 64'RT.	+03 20" Maple 32'Lt.	+79 11" Apple 85'RT.	+26 6" Cottonwood 66'RT.	+17 12" Twin 7" Locust 75'RT.
458+15 2" Box Elder 64'RT.	+24 18" Apple 69'RT.	+87 22" Maple 63'RT.	+32 9" Cottonwood 80'RT.	+19 2-4" Elms 47'RT.
+46 40" Elm 55'Lt.	+37 4" Maple 68'RT.	+93 15" Apple 85'RT.	+37 3" Cottonwood 77'RT.	+23 13" Walnut 62'RT.
+19 3" Maple 92'Lt.	+44 2" Basswood 68'RT.	476+53 12" Apple 77'RT.	+37 9" Cottonwood 110'RT.	+33 9" Elm 77'RT.
461+05 2" Twin Maples 106'Lt.	+53 18" Maple 89'Lt.	+39 6" Cottonwood 72'RT.	+39 6" Cottonwood 112'RT.	+33 12" Twin 10-3" Elm 79'RT.
+31 16" Poplar 54'Lt.	+60 4" Cherry 98'RT.	+68 18" Maple 61'RT.	+41 7" Cottonwood 56'RT.	+46 7" Elm 112'RT.
+62 4" Maple 64'Lt.	+75 2" Basswood 78'RT.	+95 19" Maple 61'RT.	+42 2-6" Cottonwood 70'RT.	+50 6" Walnut 85'RT.
+62 2" Box Elder 84'Lt.	+81 4" Box Elder 87'RT.	477+07 10" Maple 62'Lt.	+43 12" Cottonwood 89'RT.	+76 4-6" Osage
+82 2" Box Elder 64'Lt.	+82 12" Maple 110'RT.	+13 7" Walnut 25'RT.	+44 6" Cottonwood 74'RT.	Orange Hedge 70-115'RT.
462+04 3" Box Elder 64'Lt.	+97 12" Maple 102'RT.	+21 18" Maple 74'RT.	+44 6" Cottonwood 82'RT.	483+80 Lilac Bush 61'RT.
+28 2" Box Elder 64'Lt.	469+24 5" Box Elder 87'RT.	+31 21" Maple 88'RT.	+47 9" Cottonwood 84'RT.	+91 10" Catalpa 75'RT.
+82 12" Apple 81'Lt.	471+76 Spirea Bush 136'Lt.	+39 24" Maple 101'RT.	+49 6" Cottonwood 76'RT.	+95 9" Apple 84'RT.
+83 10" Apple 105'Lt.	+85 Lilac Bush 115'Lt.	+81 10" Apple 61'RT.	+50 3" Cottonwood 75'RT.	484+75 28" Maple 63'RT.
463+08 10" Apple 131'Lt.	+92 12" Birch 105'Lt.	+85 21" Maple 79'RT.	+51 7" Cottonwood 80'RT.	484+75 2" Hemlock 81'RT.
+20 6" Maple 91'RT.	+95 Lilac Bush 96'Lt.	+97 15" Apple 92'RT.	+59 12" Cottonwood 115'RT.	485+25 18" Maple 61'RT.
+20 9" Maple 114'RT.	472+16 15" Poplar 59'Lt.	+97 16" Hickory 112'RT.	+60 10" Cottonwood 111'RT.	+38 10" Elm 83'RT.
+21 6" Maple 65'RT.	+18 12" Poplar 104'Lt.	55'RT.	+60 10" Cottonwood 115'RT.	486+47 9" Apple 110'Lt.
+45 6" Maple 91'RT.	+22 9" Ash 50'Lt.	+19 12" Apple 82'RT.	+60 24" Maple 60'RT.	+65 9" Pear 92'RT.
+46 6" Maple 65'RT.	+32 12" Poplar 113'Lt.	94'RT.	+60 7" Cottonwood 70'RT.	+81 10" Apple 110'Lt.
+56 9" Apple 105'Lt.	+34 11" Poplar 52'Lt.	+46 11" Pear 69'RT.	+60 4" Cottonwood 84'RT.	+92 4" Sycamore 92'RT.
+56 9" Apple 131'Lt.	+46 12" Poplar 122'Lt.	+61 3" Oak 56'RT.	+61 3" Oak 56'RT.	+94 3" Locust 92'RT.
+57 6" Apple 81'Lt.	+56 6" Ash 51'Lt.	+60 6" Quince 94'RT.	+64 10" Cottonwood 84'RT.	487+05 12" Apple 85'Lt.
+69 10" Maple 91'RT.	+70 18" Apple 74'Lt.	+70 24" Apple 113'RT.	+84 4" Elm 85'RT.	+40 10" Locust 92'RT.
+70 4" Maple 65'RT.	473+04 3" Maple 62'RT.	+78 12" Apple 67'RT.	+86 4" Ash 79'RT.	+40 4" Cherry 80'RT.
+98 9" Maple 65'RT.	+05 9" Cherry 120'Lt.	+79 40" Willow 67'RT.	+86 4" Ash 79'RT.	+44 6" Apple 85'Lt.
464+13 20" Apple 65'Lt.	+08 2" Hemlock 91'RT.	+97 3" Plum 90'RT.	481+04 4" Elm 52'RT.	+40 9" Apple 85'Lt.
+14 30" Maple 101'RT.	+25 9" Box Elder 100'RT.	102'RT.	+29 24" Maple 64'RT.	
466+83 4" Walnut 38'RT.	+43 12" Box Elder 142'RT.	479+06 3" Plum 102'RT.	+35 9" Cottonwood 42'RT.	
		+09 5" Maple 60'RT.	+43 3-4" Ash 65'RT.	

SEC. 10 T-6-N R-12-E TROY TWP.



**PLAT**  
**PROPERTY OWNED BY**  
**OSCAR DENNIS**  
 ON S.H. 275 SEC. B  
 ROAD TRACT 52  
 T. 6N. R. 12E. TROY TWP  
 WOOD CO. - OHIO  
 PAR. 88  
 SCALE: 1" = 200'

DATE	BY	CHKD.	APP.
10/28/88	J.M.	J.M.	J.M.

D-48-0

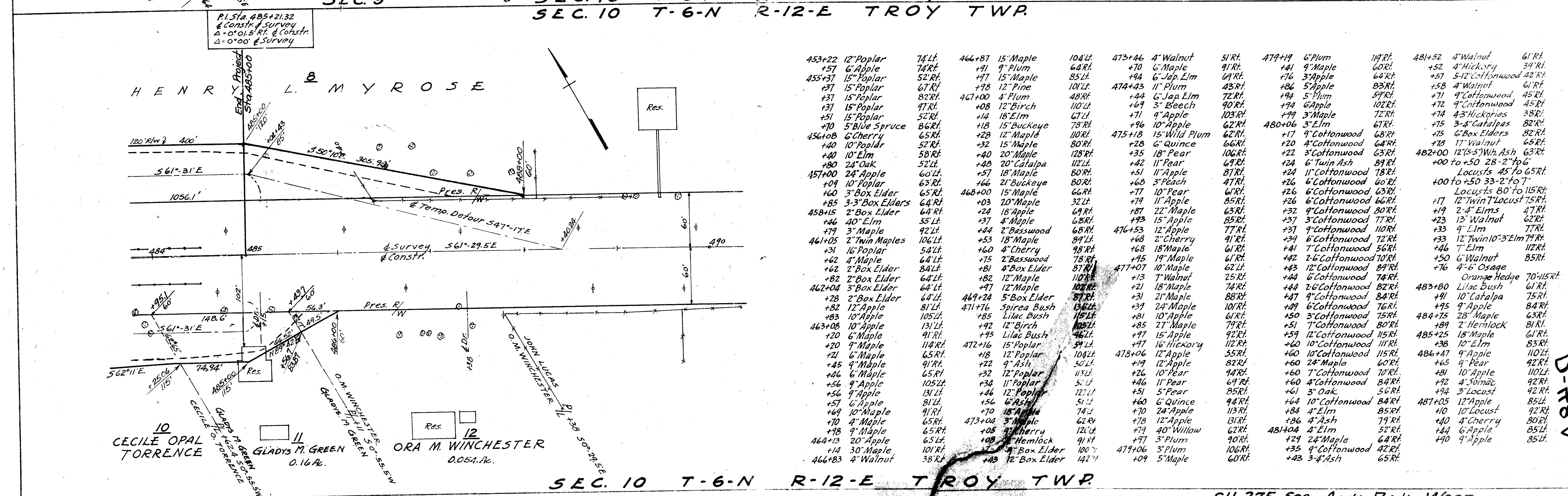
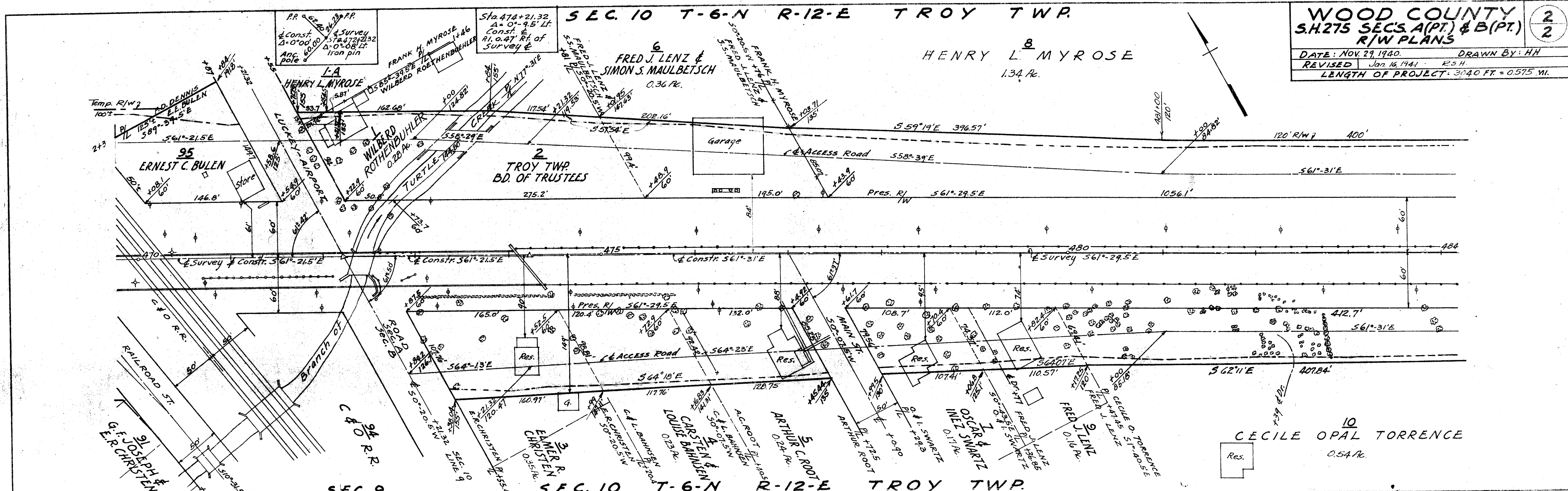






**WOOD COUNTY**  
 S.H. 275 SECS. A(Pt.) & B(Pt.)  
 R/W PLANS

DATE: NOV. 29, 1940. DRAWN BY: HH  
 REVISED Jan. 16, 1941. R.S.H.  
 LENGTH OF PROJECT: 3040 FT. = 0.575 MI.



453+22 12" Poplar 74'Lt.	466+87 15" Maple 104'Lt.	473+46 4" Walnut 51'Rt.	479+19 6" Plum 119'Rt.	481+52 4" Walnut 61'Rt.
+57 6" Apple 74'Rt.	+41 9" Plum 64'Rt.	+70 6" Maple 91'Rt.	+41 9" Maple 60'Rt.	+52 4" Hickory 39'Rt.
455+37 15" Poplar 52'Rt.	+97 15" Maple 85'Lt.	+44 6" Jap. Elm 67'Rt.	+76 3" Apple 64'Rt.	+57 5-12" Cottonwood 42'Rt.
+37 15" Poplar 101'Lt.	+98 12" Pine 101'Lt.	474+43 11" Plum 43'Rt.	+86 5" Apple 83'Rt.	+58 4" Walnut 61'Rt.
+37 15" Poplar 82'Rt.	467+00 4" Plum 48'Rt.	+44 6" Jap. Elm 72'Rt.	+94 5" Plum 59'Rt.	+71 9" Cottonwood 45'Rt.
+37 15" Poplar 97'Rt.	+08 12" Birch 110'Lt.	+49 3" Beech 90'Rt.	+74 6" Apple 102'Rt.	+72 9" Cottonwood 45'Rt.
+51 15" Poplar 52'Rt.	+14 18" Elm 67'Lt.	+71 9" Apple 103'Rt.	+99 3" Maple 72'Rt.	+74 4-3" Hickories 38'Rt.
+70 5" Blue Spruce 86'Rt.	+18 15" Buckeye 78'Rt.	+96 10" Apple 62'Rt.	480+06 3" Elm 67'Rt.	+75 3-4" Catalpas 82'Rt.
456+08 6" Cherry 65'Rt.	+28 12" Maple 110'Rt.	475+18 15" Wild Plum 62'Rt.	+17 9" Cottonwood 68'Rt.	+75 6" Box Elders 82'Rt.
+40 10" Poplar 52'Rt.	+32 15" Maple 80'Rt.	+28 6" Quince 66'Rt.	+20 4" Cottonwood 64'Rt.	+78 17" Walnut 65'Rt.
+40 10" Elm 58'Rt.	+40 20" Maple 128'Rt.	+35 18" Pear 106'Rt.	+22 3" Cottonwood 63'Rt.	482+00 12(5-5") Wh. Ash 63'Rt.
+80 24" Oak 52'Lt.	+48 20" Catalpa 112'Lt.	+42 11" Pear 69'Rt.	+24 6" Twin Ash 89'Rt.	+00 to +50 28-2" to 6"
457+00 24" Apple 60'Lt.	+57 18" Maple 80'Rt.	+51 11" Apple 87'Rt.	+24 11" Cottonwood 78'Rt.	Locusts 45' to 65'Rt.
+09 10" Poplar 63'Rt.	+64 21" Buckeye 80'Rt.	+68 3" Peach 47'Rt.	+26 6" Cottonwood 60'Rt.	+00 to +50 33-2" to 7"
+60 3" Box Elder 65'Rt.	468+00 15" Maple 66'Rt.	+77 10" Pear 61'Rt.	+26 6" Cottonwood 63'Rt.	Locusts 80' to 115'Rt.
+85 3-3" Box Elders 64'Rt.	+03 20" Maple 32'Lt.	+79 11" Apple 85'Rt.	+26 6" Cottonwood 66'Rt.	+17 12" Twin Locust 75'Rt.
458+15 2" Box Elder 64'Rt.	+24 18" Apple 69'Rt.	+87 22" Maple 63'Rt.	+32 9" Cottonwood 80'Rt.	+19 2-4" Elms 47'Rt.
+46 40" Elm 55'Lt.	+37 4" Maple 68'Rt.	+93 15" Apple 85'Rt.	+37 3" Cottonwood 77'Rt.	+23 13" Walnut 62'Rt.
+79 3" Maple 92'Lt.	+44 2" Basswood 68'Rt.	476+53 12" Apple 77'Rt.	+37 9" Cottonwood 110'Rt.	+33 9" Elm 77'Rt.
461+05 2" Twin Maples 106'Lt.	+53 18" Maple 89'Lt.	+68 2" Cherry 91'Rt.	+39 6" Cottonwood 12'Rt.	+33 12" Twin 10-3" Elm 79'Rt.
+31 16" Poplar 54'Lt.	+70 4" Cherry 98'Rt.	+68 18" Maple 61'Rt.	+41 7" Cottonwood 56'Rt.	+46 7" Elm 112'Rt.
+62 4" Maple 84'Lt.	+75 2" Basswood 78'Rt.	+95 19" Maple 61'Rt.	442 2-6" Cottonwood 70'Rt.	+50 6" Walnut 85'Rt.
+62 2" Box Elder 84'Lt.	+81 4" Box Elder 87'Rt.	477+07 10" Maple 62'Lt.	+43 12" Cottonwood 89'Rt.	+76 4-6" Osage
+82 2" Box Elder 64'Lt.	+82 12" Maple 110'Rt.	+13 7" Walnut 25'Rt.	+44 6" Cottonwood 74'Rt.	Orange Hedge 70-115'Rt.
462+04 3" Box Elder 64'Lt.	+97 12" Maple 102'Rt.	+21 18" Maple 74'Rt.	+44 2-6" Cottonwood 82'Rt.	483+80 Lilac Bush 61'Rt.
+28 2" Box Elder 64'Lt.	469+24 5" Box Elder 87'Rt.	+31 21" Maple 88'Rt.	+47 9" Cottonwood 84'Rt.	+91 10" Catalpa 75'Rt.
+82 12" Apple 81'Lt.	471+76 Spirea Bush 136'Lt.	+39 24" Maple 101'Rt.	+49 6" Cottonwood 76'Rt.	+95 9" Apple 84'Rt.
463+08 10" Apple 105'Lt.	+85 Lilac Bush 115'Lt.	+81 10" Apple 61'Rt.	+50 3" Cottonwood 75'Rt.	484+75 28" Maple 63'Rt.
463+08 10" Apple 131'Lt.	+92 12" Birch 105'Lt.	+85 21" Maple 79'Rt.	+51 7" Cottonwood 80'Rt.	+89 2" Hemlock 81'Rt.
+20 6" Maple 91'Rt.	+95 Lilac Bush 46'Lt.	+97 15" Apple 92'Rt.	+59 12" Cottonwood 115'Rt.	485+25 18" Maple 61'Rt.
+20 9" Maple 114'Rt.	472+16 15" Poplar 59'Lt.	+97 16" Hickory 112'Rt.	+60 10" Cottonwood 111'Rt.	+38 10" Elm 83'Rt.
+21 6" Maple 65'Rt.	+18 12" Poplar 104'Lt.	473+06 12" Apple 55'Rt.	+60 10" Cottonwood 115'Rt.	486+47 9" Apple 110'Lt.
+45 9" Maple 91'Rt.	+22 9" Ash 50'Lt.	+82 9" Apple 82'Rt.	+60 24" Maple 60'Rt.	+65 9" Pear 42'Rt.
+46 6" Maple 65'Rt.	+32 12" Poplar 113'Lt.	474+06 10" Apple 94'Rt.	+60 7" Cottonwood 10'Rt.	+81 10" Apple 110'Lt.
+56 9" Apple 105'Lt.	+34 11" Poplar 51'Lt.	+46 11" Pear 69'Rt.	+60 4" Cottonwood 84'Rt.	+92 4" Sömac 92'Rt.
+56 9" Apple 131'Lt.	+46 12" Poplar 122'Lt.	+51 5" Pear 85'Rt.	+61 3" Oak 56'Rt.	+94 3" Locust 42'Rt.
+57 6" Apple 81'Lt.	+56 6" Ash 51'Lt.	+60 6" Quince 94'Rt.	+64 10" Cottonwood 84'Rt.	487+05 12" Apple 85'Lt.
+69 10" Maple 91'Rt.	+70 18" Maple 74'Lt.	+78 24" Apple 113'Rt.	+84 4" Elm 85'Rt.	+10 10" Locust 92'Rt.
+70 4" Maple 65'Rt.	473+04 3" Maple 62'Rt.	+78 12" Apple 74'Rt.	+86 4" Ash 79'Rt.	+40 4" Cherry 80'Rt.
+98 9" Maple 65'Rt.	+08 4" Cherry 12'Lt.	+79 40" Willow 62'Rt.	481+04 4" Elm 52'Rt.	+44 6" Apple 85'Lt.
464+13 20" Apple 65'Lt.	+08 4" Hemlock 91'Rt.	+97 3" Plum 90'Rt.	+29 24" Maple 64'Rt.	+40 9" Apple 85'Lt.
466+83 4" Walnut 38'Rt.	+08 4" Box Elder 100'Rt.	479+06 3" Plum 106'Rt.	+35 9" Cottonwood 42'Rt.	
	+43 12" Box Elder 142'Lt.	+09 5" Maple 60'Rt.	+43 3-4" Ash 65'Rt.	

ASX-D