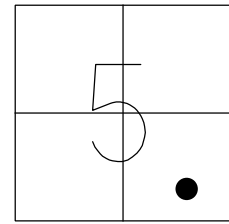


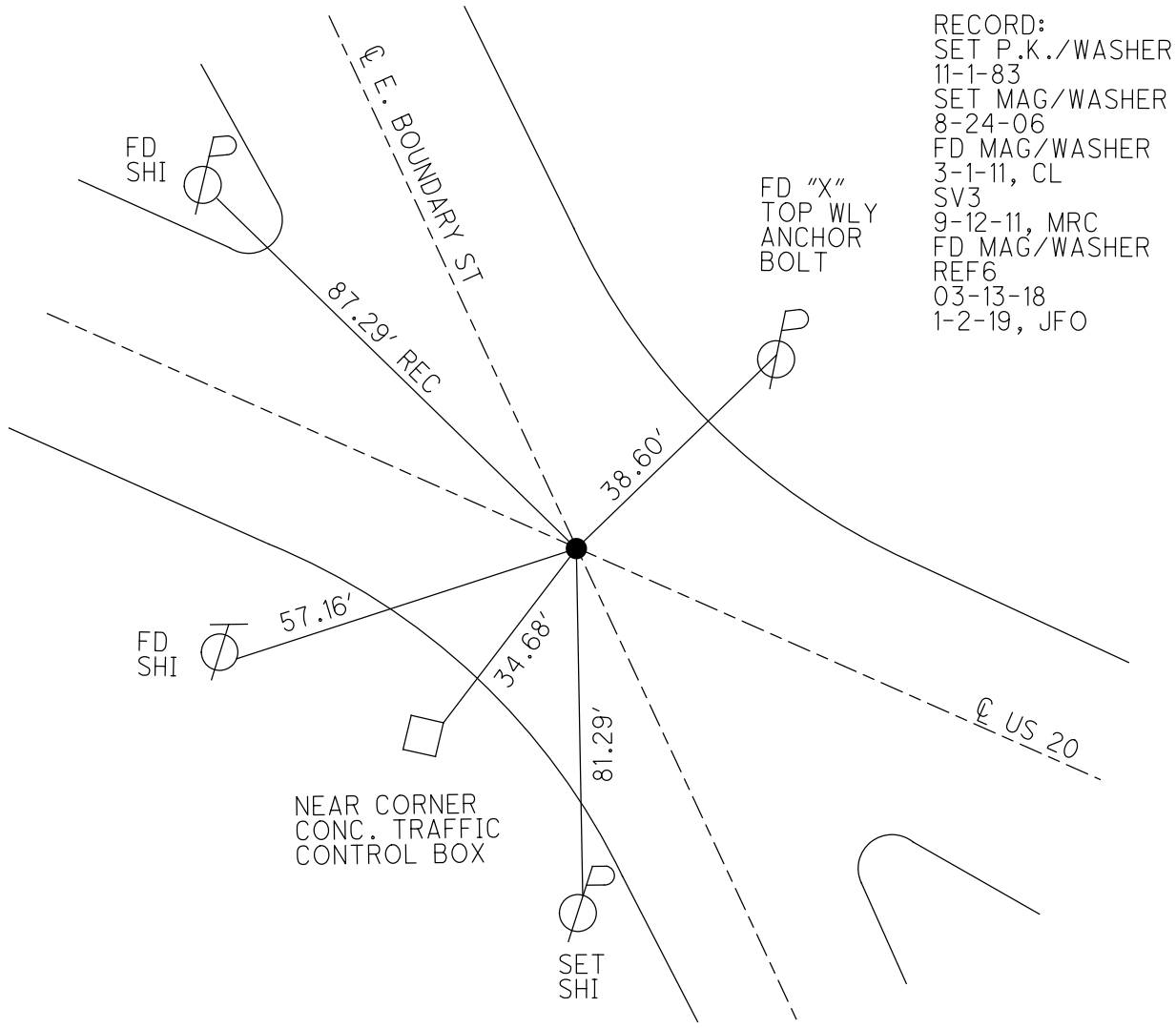
O.D.O.T. DISTRICT 2 SURVEY OFFICE (USE ONLY)

PERSONNEL \_\_\_\_\_ REFERENCE NO. 6 SHEET 3 OF 13  
 NOTES LEU DATE 03-13-2018 ROUTE US20  
 H.C. O'DONNELL WEATHER LIGHT SNOW COUNTY WOOD  
 R.C. AUBLE TEMP. 29° TOWNSHIP PERRYSBURG  
           SEAMAN SECTION RT 5  
 DWG BY JAMES PID 102808 T 4 N R 11 E

TYPE MONUMENT MAG/WASHER  
 ON SURFACE - ~~BELOW~~ ON  
 OFFSET Q PAVEMENT ON ~~LT~~ : ~~RT~~  
- TO - EDGE PAVEMENT  
 STATION: 127+24.8



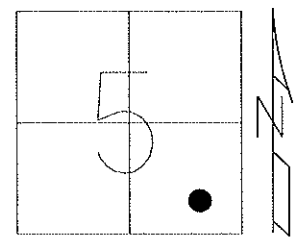
HORIZ.DATUM: NAD83 2011 GEOID: NAVD88 2012A  
 GRID: NORTHING: 689232.171 EASTING: 1664533.281



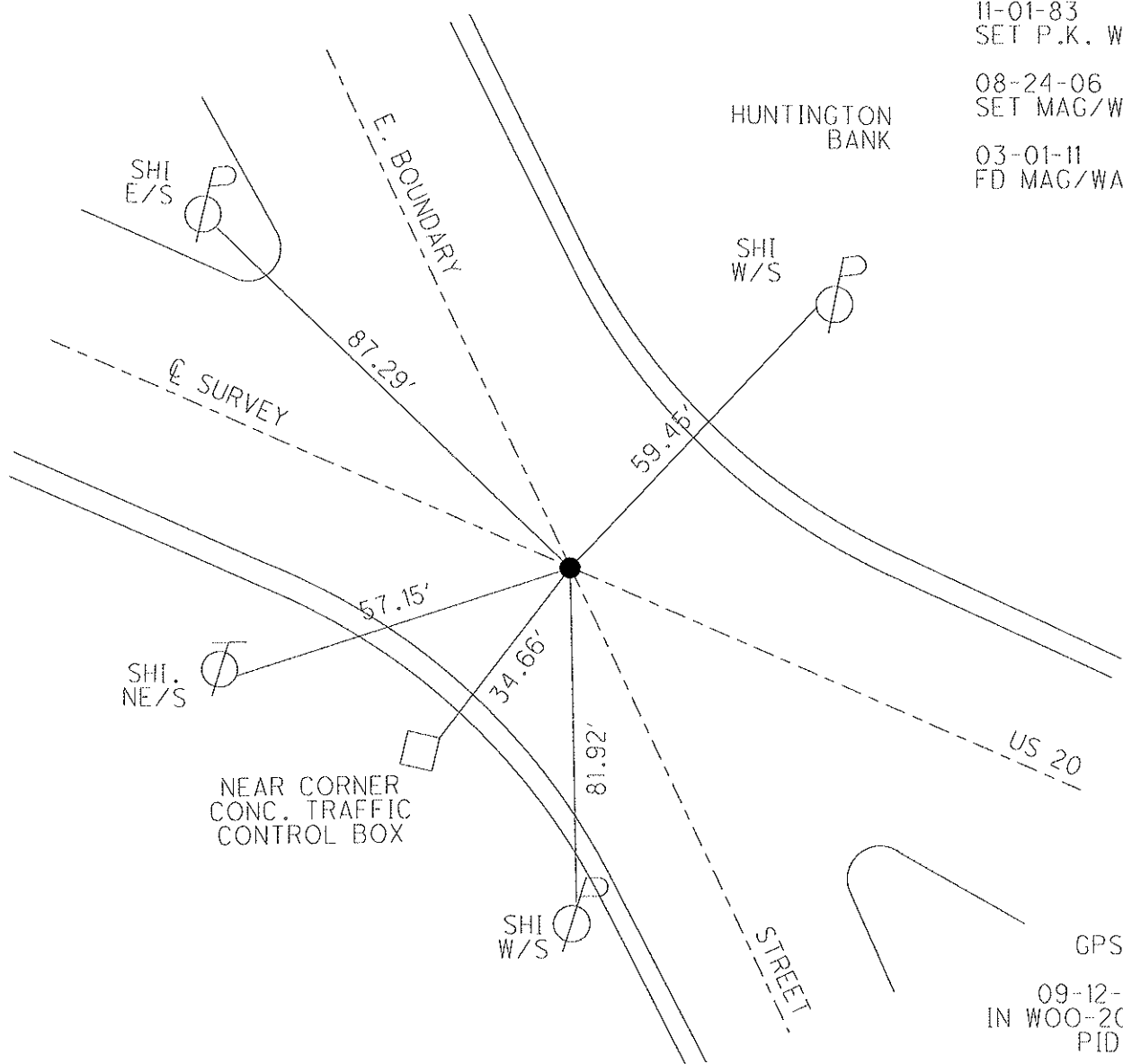
O.D.O.T. DISTRICT 2 SURVEY OFFICE (USE ONLY)

PERSONNEL	REFERENCE NO. <u>6</u>	SHEET <u>3</u> OF <u>13</u>
NOTES <u>HOFFMAN</u>	DATE <u>09-07-83</u>	ROUTE <u>US 20</u>
H.C. <u>LOEHRKE</u>	WEATHER <u>CLEAR</u>	COUNTY <u>WOOD</u>
R.C. <u>HOUSEHOLDER</u>	TEMP. <u>70°</u>	TOWNSHIP <u>PERRYSBURG</u>
<u>BARNHISES</u>		SECTION <u>5</u>
		T <u>4</u> N R <u>11</u> E

TYPE MONUMENT MAG & WASHER  
 ON SURFACE - BELOW ON  
 LEFT - Q PAV'T - RIGHT ON  
TO EDGE PAVEMENT  
 S.L.M. 127+24.8  
 Grid: Northing: \_\_\_\_\_ Easting: \_\_\_\_\_



11-01-83  
SET P.K. WASHER  
 08-24-06  
SET MAG/WASHER  
 03-01-11  
FD MAG/WASHER



GPS SHOT  
SV 3  
09-12-11 MRC  
IN WOO-20-4.95  
PID 91544

County WOOD <sup>U.S.</sup> ~~S.R.~~ 20

Date 9-7-83

Township PERRYSBURG CORP.

Weather CLEAR

Section SANDUSKY ST.

Temp. +70°

T N, R E

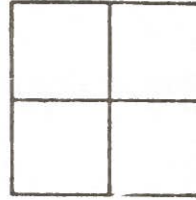
Personnel S. HOFFMAN

G. LOEHRKE

J. HOUSEHOLDER

M. BARNHISE

(6)

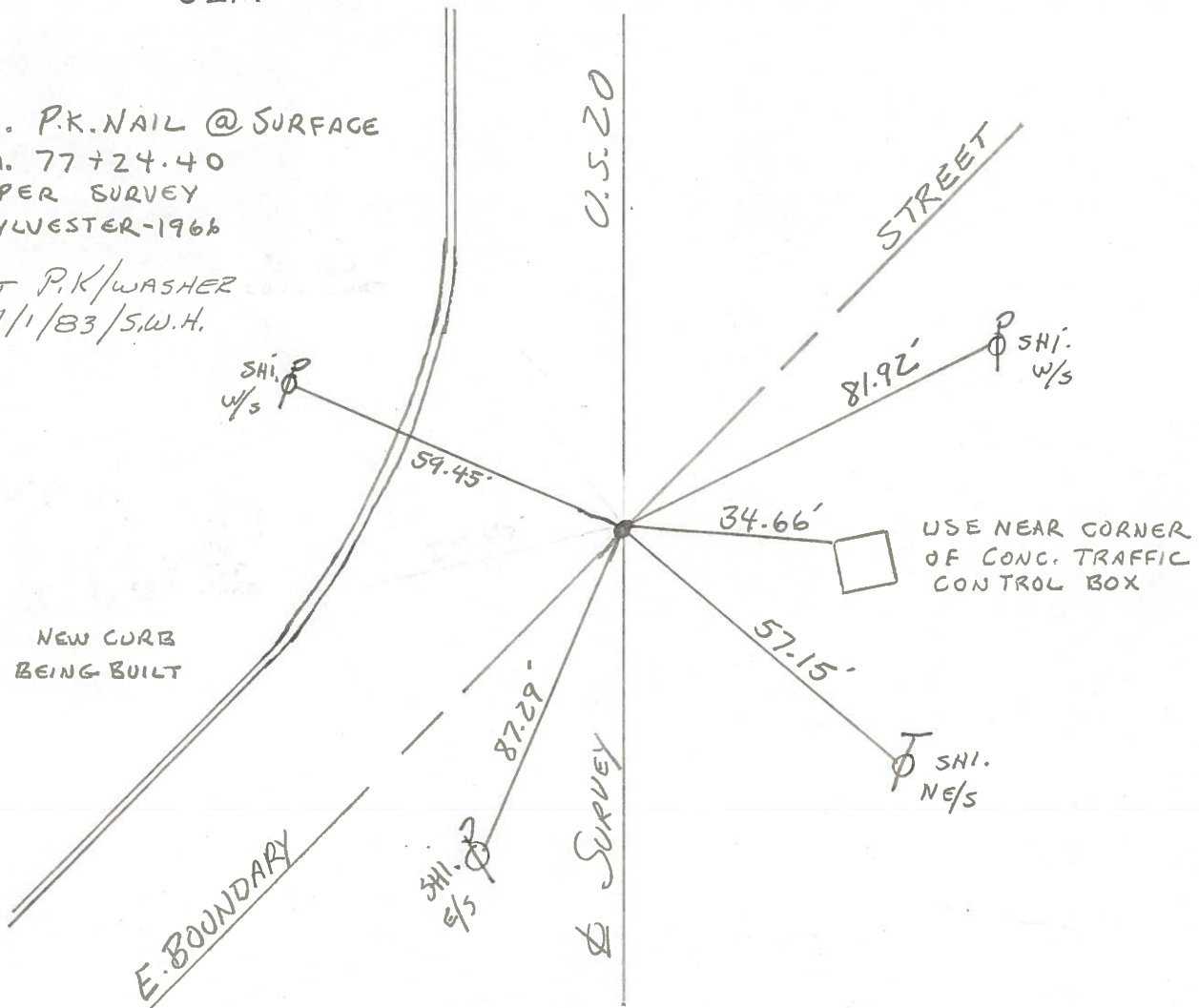


SLM = 127+07

FD. P.K. NAIL @ SURFACE  
STA. 77+24.40  
AS PER SURVEY  
BY SYLVESTER-1966

SET P.K./WASHER  
11/1/83/S.W.H.

NEW CURB  
BEING BUILT



OD.O.T. DISTRICT 2 SURVEY OFFICE

Sht. 1 of 5

County WOOD U.S. 20

Date 12-27-77

Township \_\_\_\_\_

Weather P. CLOUDY

Section \_\_\_\_\_

Temp. +15°

T N, R E

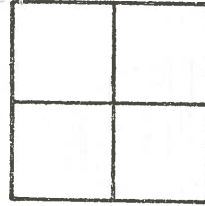
Personnel BURNSIDE

SMITH

KNAPE

MEAD

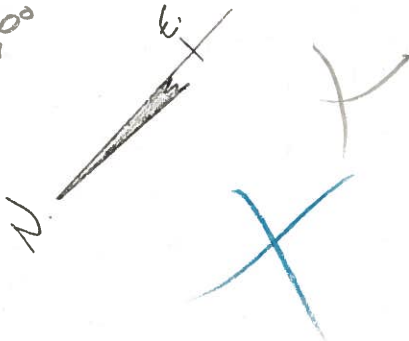
6



9-7-83

Clear  
+70°  
SWH

SLM = 127 + 07



U.S. 20

STREET

fd @ surface  
FD. P.K. NAIL  
STA. 77+24.40  
AS PER SURVEY  
BY SILVESTER-1966

New CURB  
" " TOP  
CONC. CURB

Set  
SHI.  
W/S

" " TOP  
CONC. CURB  
New  
CURB  
Being  
BUILT

EAST BOUNDARY

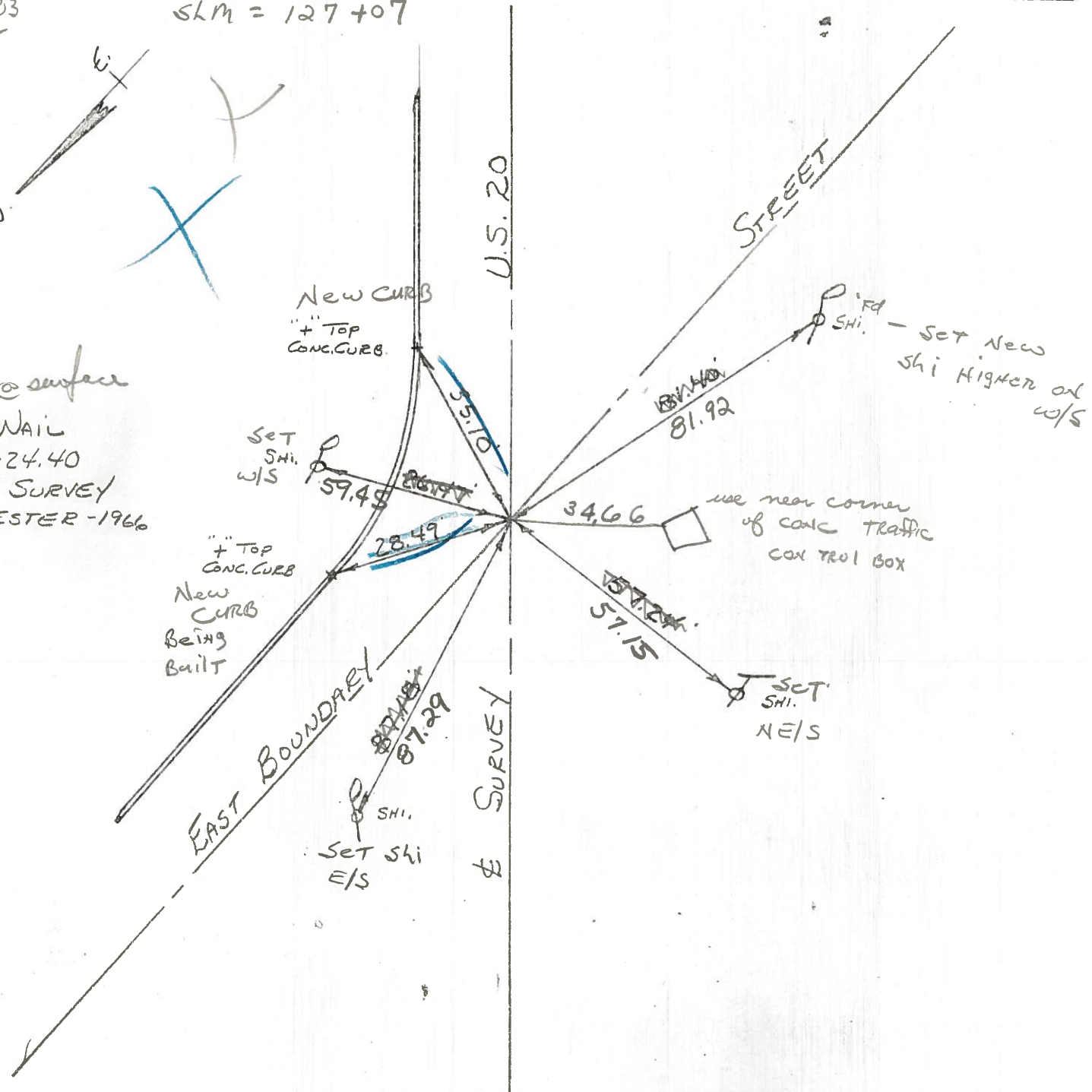
Set SHI  
E/S

U.S. 20  
& SURVEY

Set New  
SHI Higher on  
W/S

use near corner  
of CONC TRAFFIC  
CON TROL BOX

Set  
SHI.  
NE/S



County WOOD U.S. 20

Date 12-27-77

Township \_\_\_\_\_

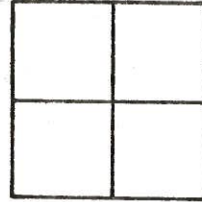
Weather PT. CLOUDY

Section \_\_\_\_\_

Temp. +15°

T N, R E

Personnel BURNSIDE



6

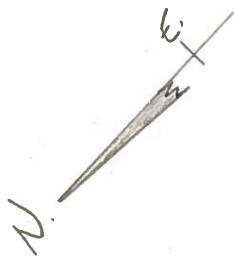
SMITH

KNAPE

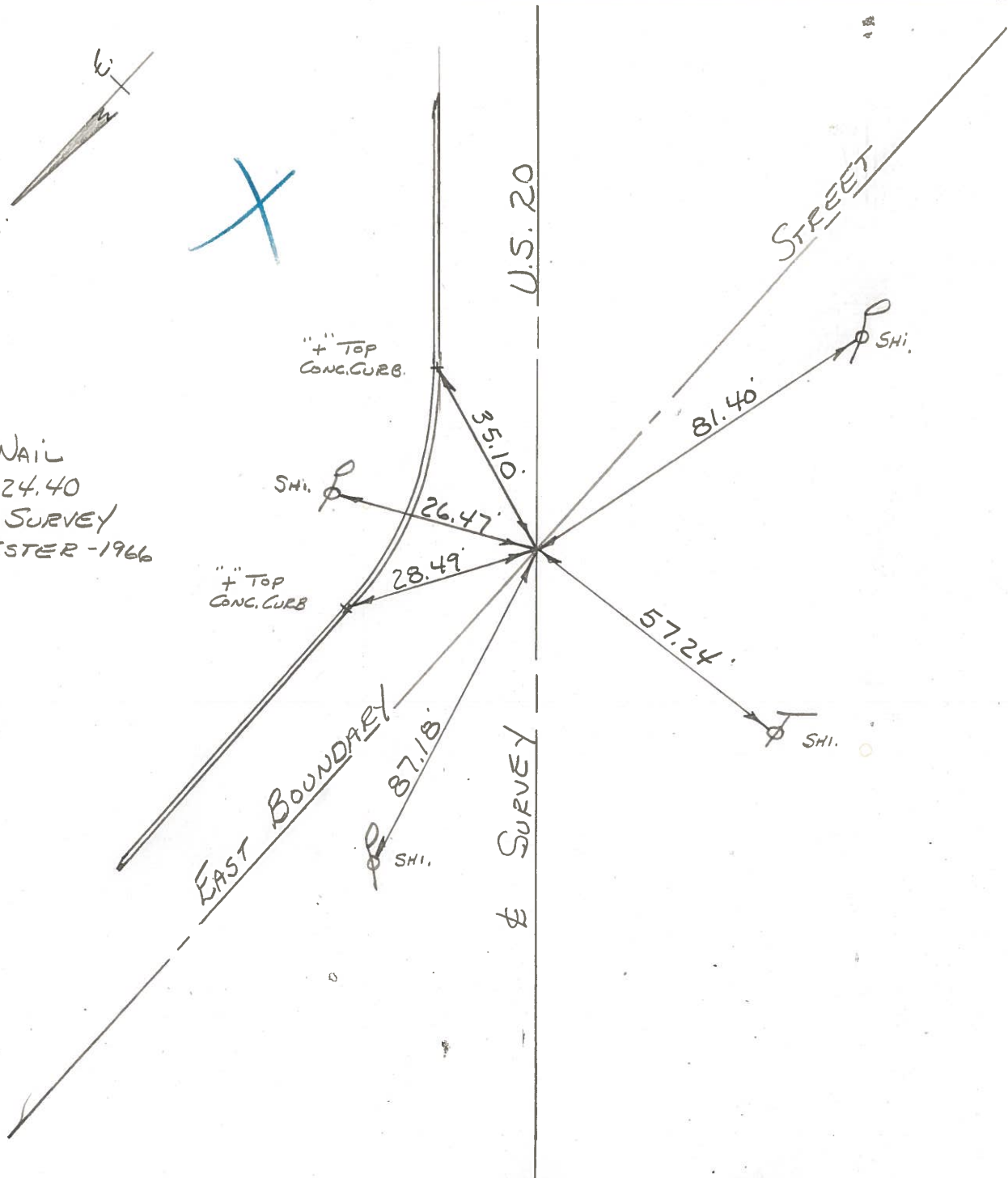
MEAD

\_\_\_\_\_

\_\_\_\_\_



FD. P.K. NAIL  
STA. 77+24.40  
AS PER SURVEY  
BY SYLVESTER - 1966



PERSONNEL	TITLE	PERSONNEL	TITLE

COUNTY Wood DATE 3-24-53  
 S. R. U.S.#20 Tomsic 11-3-60  
 WEATHER \_\_\_\_\_  
 SEC. C, R, A TEMP. \_\_\_\_\_

DESCRIPTION	LEFT	CENTER LINE	RIGHT	JOB NO.
-------------	------	-------------	-------	---------

Sta. 42+38.89 = 127+77.60' S.L.M. stationing  
 Perrysburg Corp. line — (All Ties destroyed)

#334

Sta. 53+17.39 = 138+56.10'  
 Drill Hole - set P.K. nail o.k.  
 3-24-53

#335

Shiner in 36" Elm N. 56.  
 Shiner in P.P. N.N.E. 43.  
 N.W. cor. curb mil br. S.E. 75.  
 Shiner in T.P. W. 82.  
 N. edge pav't. 2.7  
 S. edge pav't. 17.3

Sta. 65+85.12 = 151+23.83'  
 X-in conc. pav't. - P.K. nail o.k.

#336

Shiner in P.P. N. 55.  
 Shiner in 3" Evergreen N.E. 63.  
 Shiner in T.P. S.S.E. 60.  
 N. edge of pave 1.  
 S. edge of pave 20.

Sta. 75+03.14 = 160+41.85'  
 X-in conc. pave. - P.K. nail o.k.

#337

Shiner in T.P. S.E. 92.  
 Shiner in T.P. S.S.W. 64.  
 Shiner in P.P. N.N.W. 81.  
 X-in top of M. stone N.N.E. 57.  
 N. edge of pave. 1.9  
 S. edge of pave. 20.

PERSONNEL	TITLE	PERSONNEL	TITLE	COUNTY	DATE	WEATHER	TEMP.
Torres				Wood	Nov-3-	cloudy	40°
Neuser				S. R. U.S. #20			
Orlik							
Morris				SEC.			

DESCRIPTION Reference all points and P.I.'s JOB NO.

LEFT	CENTER LINE	RIGHT
Sta. 42+38.89 = 127+77.60 Perrysburg Corp. line #334		all points destroyed
Sta. 53+17.39 = 138+56.10 Fd. P.K. Nail #335	Set	Shiner in 36" elm N. 56.68 Shiner in ♂ #14123 N.N.E. 44.05 Shiner in ♀ W. 85.00 N. edge Pav't. 3.6 S. edge Pav't. 18.1
Sta. 65+75.12 = 151+23.43 Fd. P.K. Nail #336		Shiner in ♂ #11901 N 56.25 Shiner in 8" Pine N-E 63.68 Shiner in ♀ S.S.E. 60.40 N. edge Pav't. 1.7 S. edge Pav't. 20.00
Sta. 75+03.14 = 160+41.85 Fd. P.K. Nail #337		Shiner in ♀ S.E. 92.95 Shiner in ♀ S.S.W. 64.57 Shiner in ♂ N.N.W. 81.77 M. stone destroyed N. edge Pav't. 1.90 S. edge Pav't. 19.90
Sta. 89+47.41 = 174+86.12 Fd. P.K. Nail #338		Shiner 18" Maple W. 115.49 Shiner in ♀ S.W. 58.57 Shiner ♂ E. 77.50 Stone - could not locate N. edge Pav't. 2.0' S. edge Pav't. 19.9'

Note: Old Sta. 15 from 3-24-53 Reference sheet.