

O.D.O.T. DISTRICT 2 SURVEY OFFICE (USE ONLY)

PERSONNEL

REFERENCE NO. 16 A

SHEET 1 OF 4

NOTES LEU

DATE 3-13-18

ROUTE US 20

H.C. O'DONNELL

WEATHER SNOW

COUNTY WOOD

R.C. AUBLE
SEAMAN

TEMP. 34°

TOWNSHIP PERRYSBURG

SECTION 11

DWG BY JAMES PID 102808

T 4 N R U S E

TYPE MONUMENT MAG/WASHER

ON SURFACE - BELOW ON

OFFSET \odot PAVEMENT - LT : RT

- TO - EDGE PAVEMENT

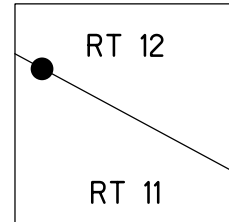
STATION: 240+69.21

HORZ.DATUM: NAD83 2011

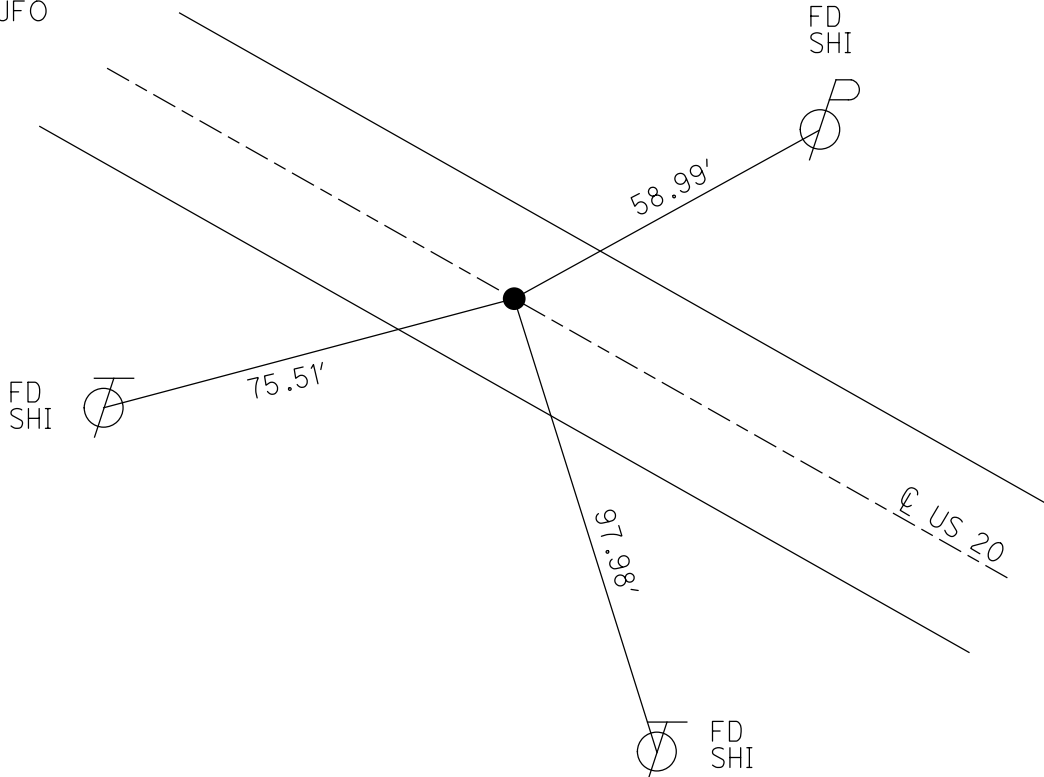
GEOID: NAVD88 2012A

GRID: NORTHING: 683661.974

EASTING: 1674422.456



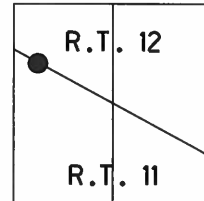
RECORD: P.I.
 $\Delta = 0^\circ 52' RT$
 FD P.K./WASHER
 6/29/93, CL
 SET MAG/WASHER
 9/9/11, MC
 SVA16
 9/12/11, SAH
 FD MAG/WASHER
 4/30/14, TMR
 SET MAG/WASHER
 1-2-19, JFO



O.D.O.T. DISTRICT 2 SURVEY OFFICE (USE ONLY)

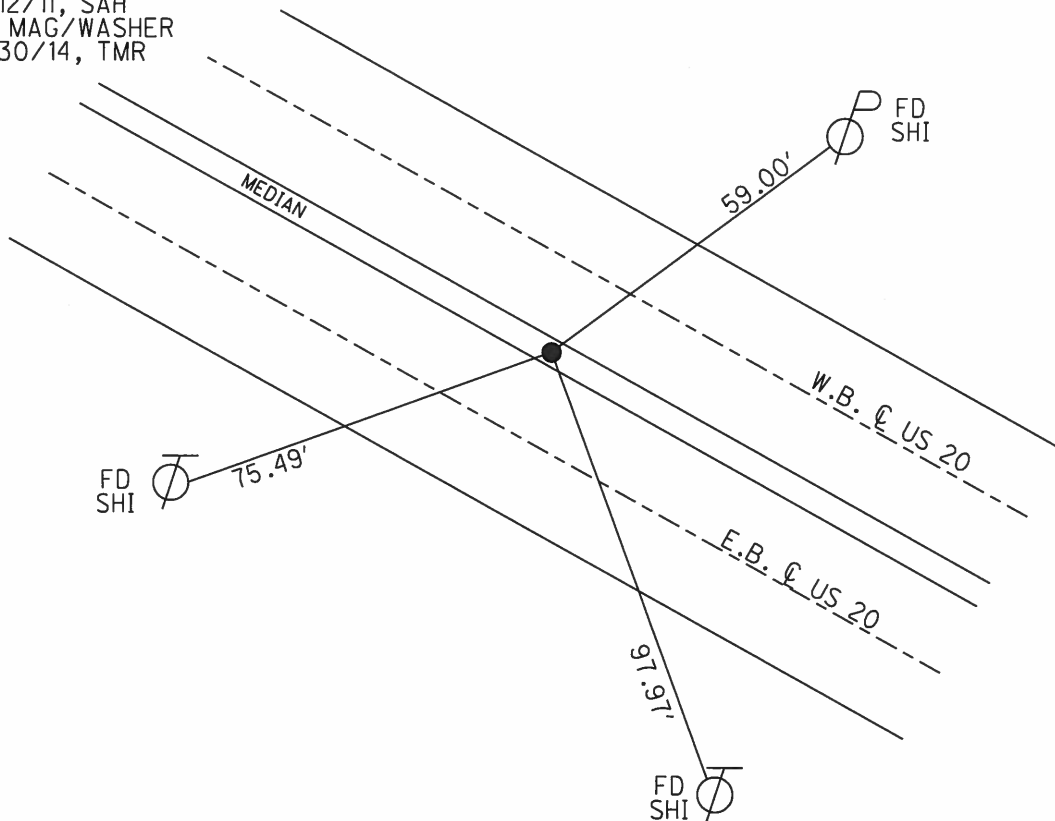
PERSONNEL _____ REFERENCE NO. 16 A SHEET 1 OF 4
 NOTES LEU DATE 8-8-16 ROUTE US 20
 H.C. HOMAN WEATHER SUNNY COUNTY WOOD
 R.C. LEU TEMP. 74° TOWNSHIP PERRYSBURG
 _____ SECTION R.T. 11
 _____ T 4 N R U E

TYPE MONUMENT MAG/WASHER
 ON SURFACE - ~~BELOW~~ ON _____
 LEFT - CL PAV'T - ~~RIGHT~~ 1.0'
1.2 TO LT EDGE PAVEMENT
 S.L.M. 240+69.21



Grid: Northing: 683661.950 Easting: 1674422.483

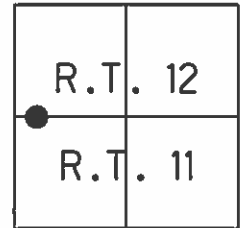
RECORD: P.I.
 $\Delta = 0^\circ 52' \text{ RT}$
 FD P.K./WASHER
 6/29/93, CL
 SET MAG/WASHER
 9/9/11, MC
 SVA16
 9/12/11, SAH
 FD MAG/WASHER
 4/30/14, TMR



O.D.O.T. DISTRICT 2 SURVEY OFFICE (USE ONLY)

PERSONNEL _____ REFERENCE NO. 16-A SHEET 1 OF 19
 NOTES RHOADES DATE 6-3-13 ROUTE US 20
 H.C. CODER WEATHER CLOUDY COUNTY WOOD
 R.C. WESTFALL TEMP. 60° TOWNSHIP PERRYSBURG
 _____ SECTION 11
 _____ T 4 N R USE

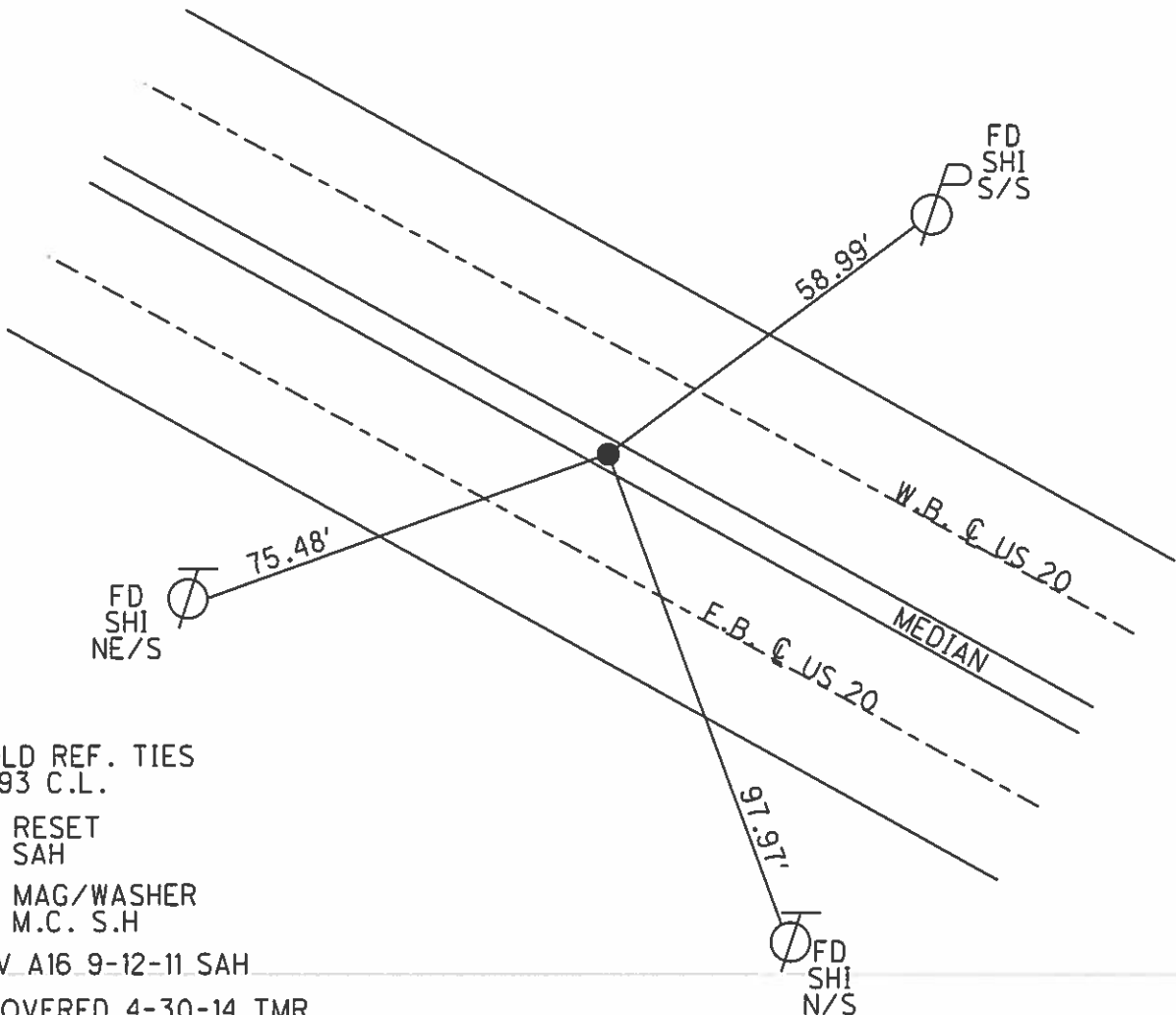
TYPE MONUMENT SET P.K./WASHER
 ON SURFACE - ~~BELOW~~ YES
 LEFT - Q PAV'T - ~~RIGHT~~ 9.2
1.2 TO LT EDGE PAVEMENT
 S.L.M. 240+69.21



Grid: Northing: 683,661.9651 Easting: 1,674,422.4074

P.I.Δ = 0° 52' RT

CTL# 0303360 - 91544 FIN



PER OLD REF. TIES
 6-29-93 C.L.

NEEDS RESET
 9-9-11 SAH

RESET MAG/WASHER
 9-9-11 M.C. S.H

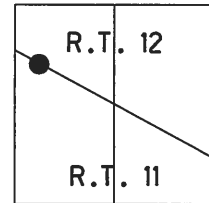
GPS SV A16 9-12-11 SAH

NOT COVERED 4-30-14 TMR

O.D.O.T. DISTRICT 2 SURVEY OFFICE (USE ONLY)

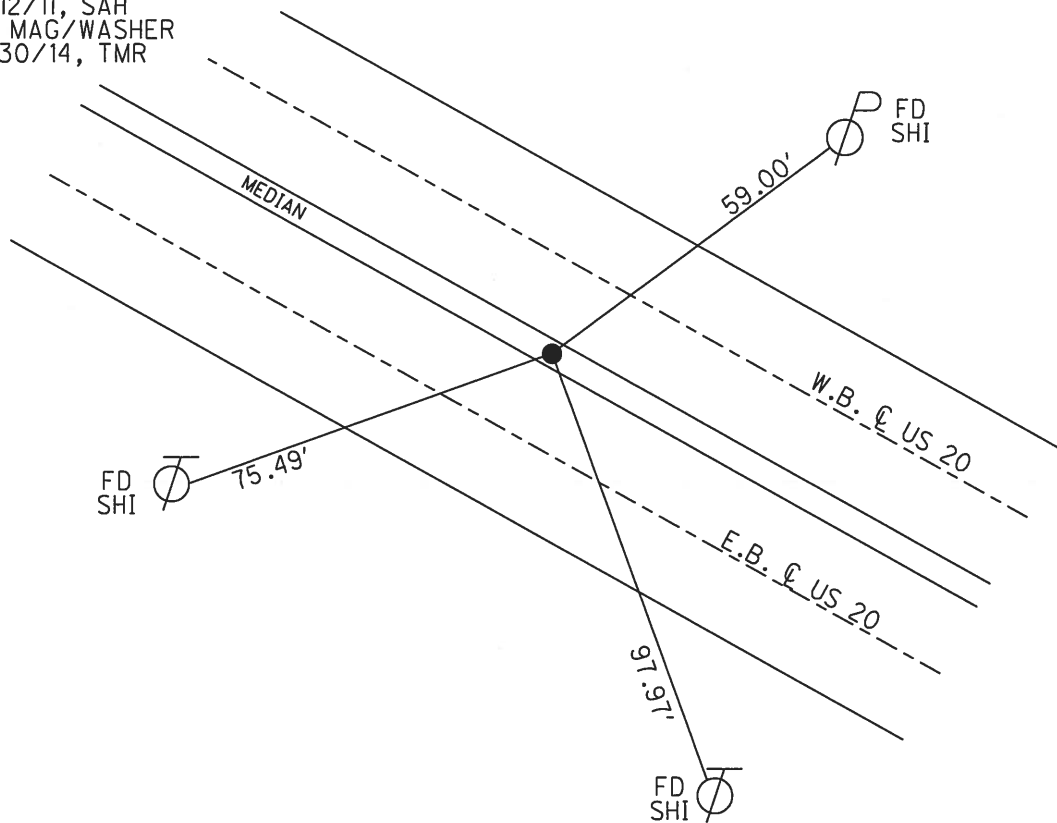
PERSONNEL _____ REFERENCE NO. 16 A SHEET 1 OF 4
 NOTES LEU DATE 8-8-16 ROUTE US 20
 H.C. HOMAN WEATHER SUNNY COUNTY WOOD
 R.C. LEU TEMP. 74° TOWNSHIP PERRYSBURG
 SECTION R.T. 11
T 4 N R 15 E

TYPE MONUMENT MAG/WASHER
 ON SURFACE - ~~BELOW~~ ON _____
 LEFT - CL PAV'T - ~~RIGHT~~ 1.0'
1.2 TO LT EDGE PAVEMENT
 S.L.M. 240+69.21



Grid: Northing: 683661.950 Easting: 1674422.483

RECORD: P.I.
 $\Delta = 0^{\circ}52' RT$
 FD P.K./WASHER
 6/29/93, CL
 SET MAG/WASHER
 9/9/11, MC
 SVA16
 9/12/11, SAH
 FD MAG/WASHER
 4/30/14, TMR



O.D.O.T. DISTRICT 2 SURVEY OFFICE

PERSONNEL _____

REFERENCE NO. 16-A

SHEET 1 OF 19

NOTES LOHRKE

H.C. CURTIS

R.C. Romero

DATE 4-20-92

WEATHER Cloudy

TEMP. +60

ROUTE U.S. 20

COUNTY Wood

TOWNSHIP Perrysburg

SECTION _____

T _____ R _____

TYPE MONUMENT Set P.K./WASHER

PER OLD Ref. TIES

6-29-93

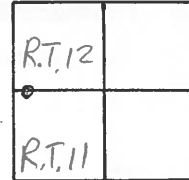
C.L.

ON SURFACE - BELOW Yes

LEFT - CL PAV'T. - RIGHT 9.2

1.2 TO Lt EDGE PAVEMENT

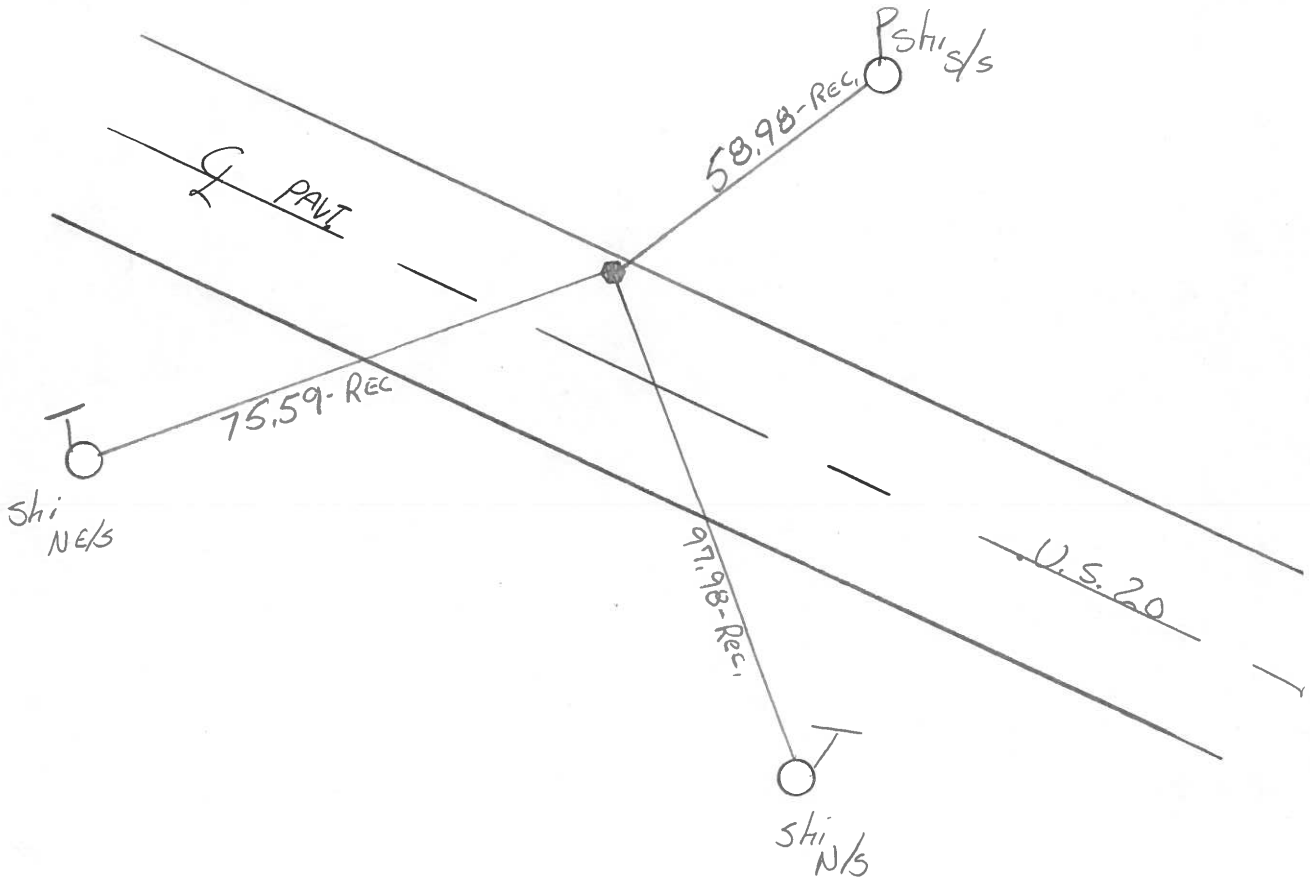
S.L.M. 241+10



P.I. $\Delta = 0^{\circ}52' R+$

Sta 160+31.31

151+01.1 w/l



County Wood S.R. U.S. #20

Date 5/19/80

Township Perrysburg

Weather sunny

Section R.T. 11 ~ R.T. 12

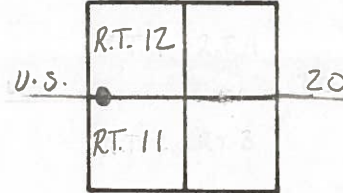
Temp. 60°

T N, R E

Personnel CROWIN SCHNEIDER

RIPPLE MOSSER

GEYMAN BARBOUR



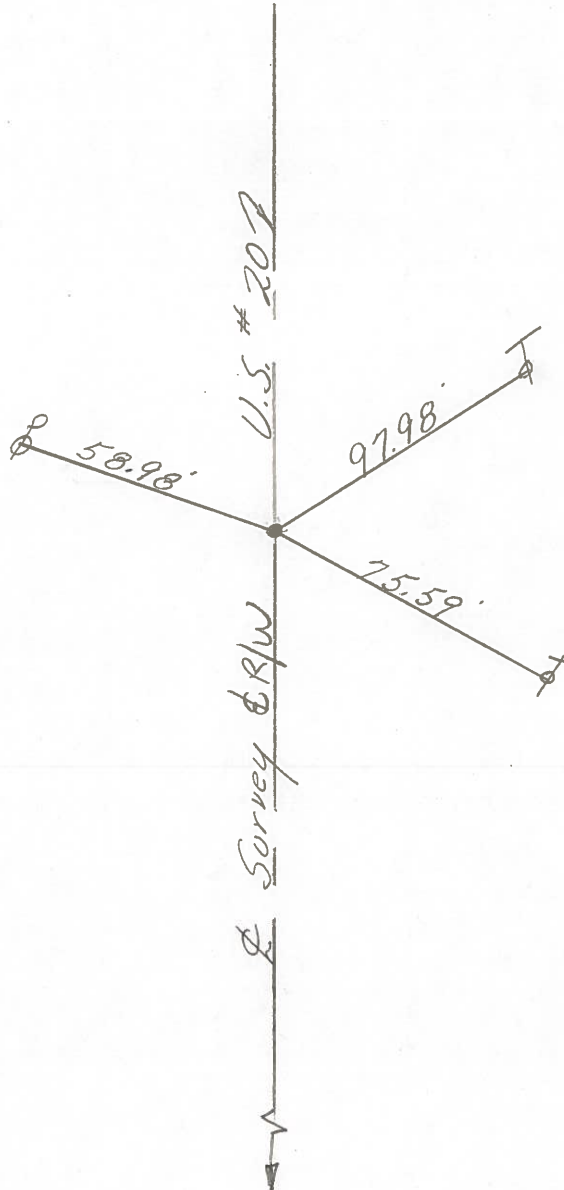
16-A

OK, 10-7-81

@ 45°



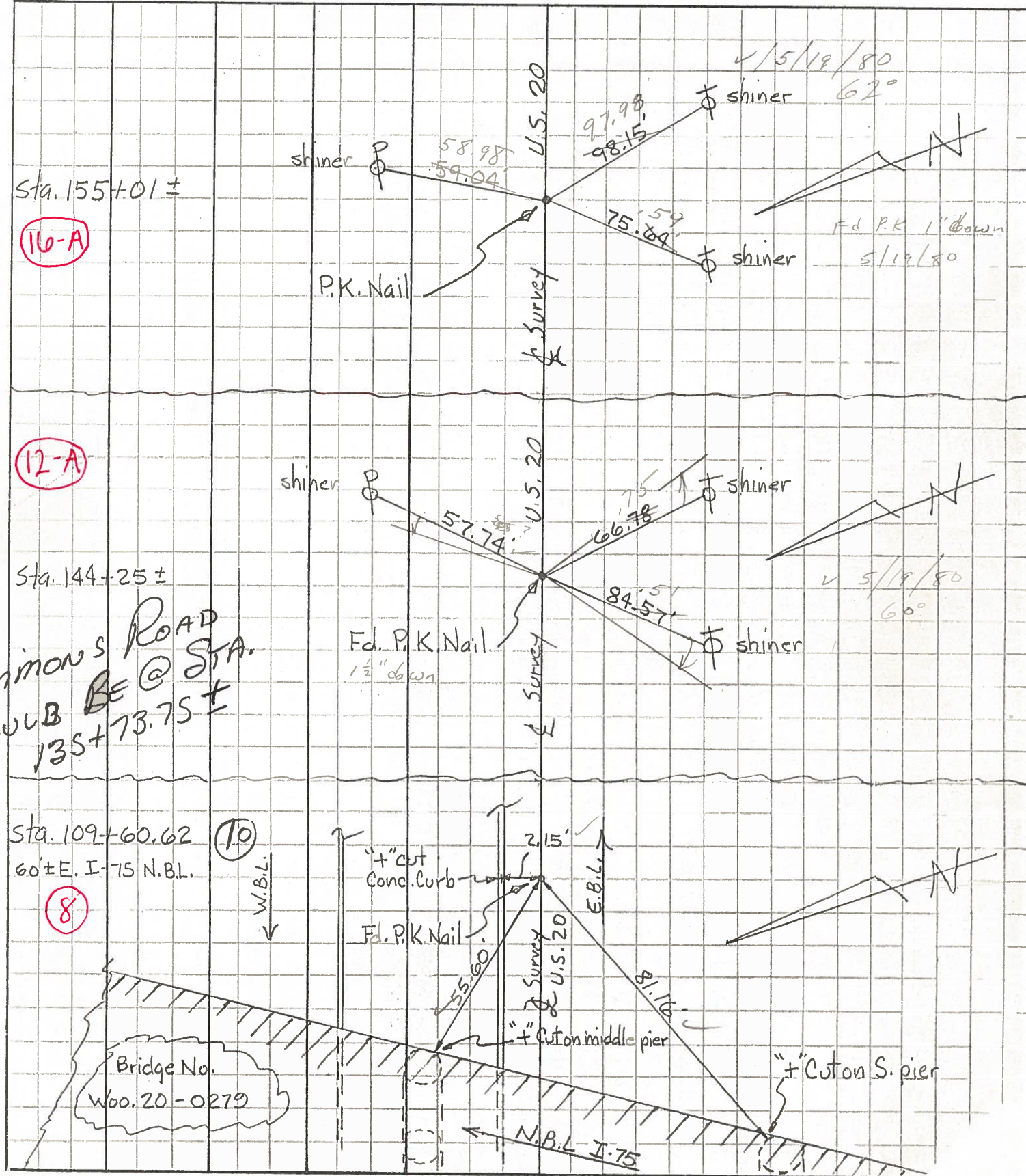
155+01 ±
Fd. P.K. 1 1/2" below surface



PERSONNEL	TITLE	PERSONNEL	TITLE
Tomsic		Gancarz	
Neuser			
Vanyo			
Granata			

COUNTY Wood DATE Aug. 17, 1972
 S. R. U. S. 20 RECHECKED Dec-23-75
 WEATHER _____
 SEC. Perrysburg Twp. TEMP. _____

DESCRIPTION REF. TIES for Control Pts. (From old 1948 plans - S.H. 275 Sec. C) JOB NO. _____
 LEFT CENTER LINE RIGHT



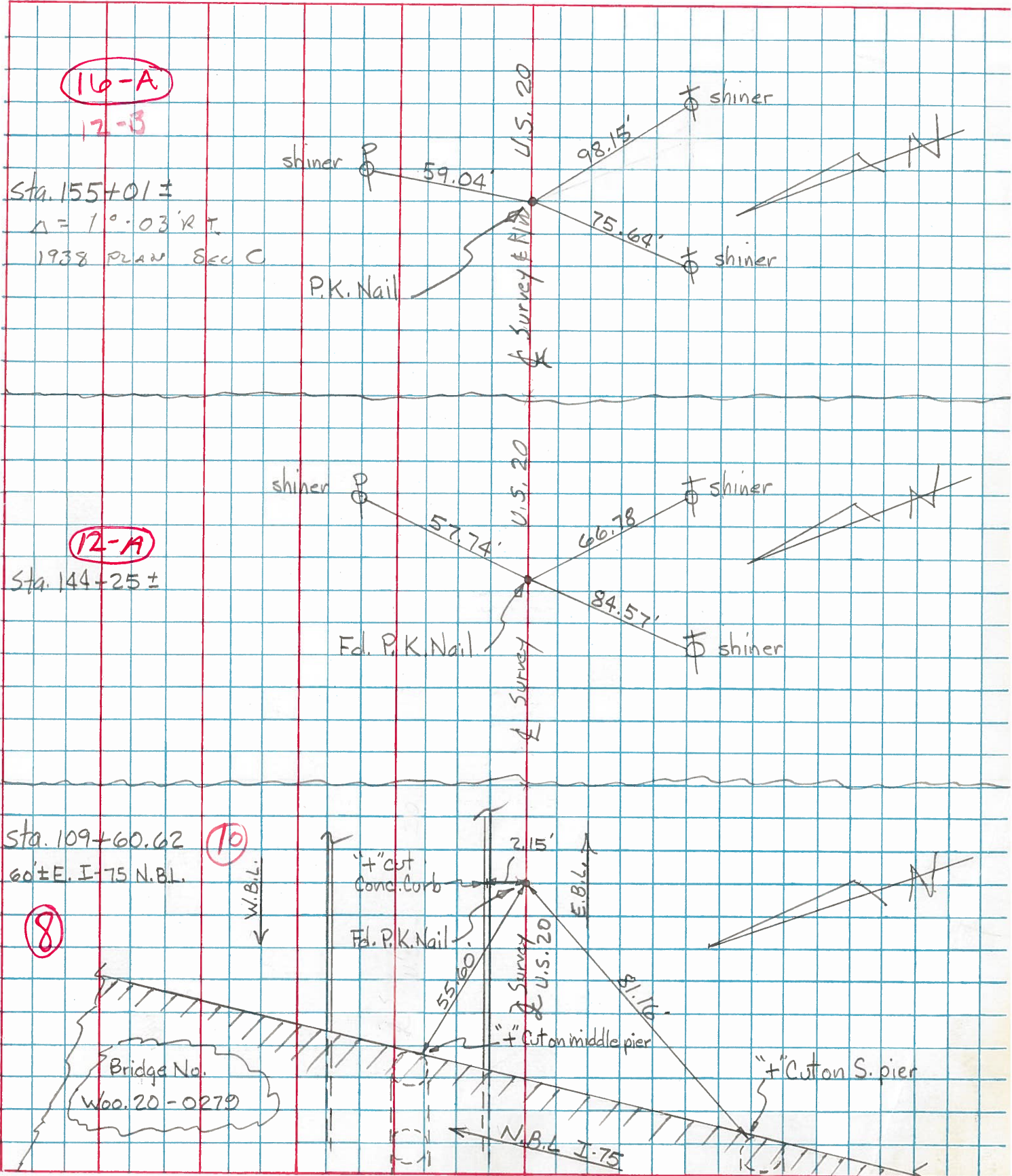
Simmons Road
 Should BE @ STA.
 135+73.75 ±

Bridge No.
 Woo. 20-0279

N.B.L. I-75

PERSONNEL	TITLE	PERSONNEL	TITLE	COUNTY	Wood	DATE	Aug. 17, 1972
Tomsic		Gancarz		S. R.	U. S. 20	Rechecked	Dec-23-75
Neuser				SEC.	Perry'sBURG TWP.	WEATHER	
Vanyo				TEMP.			
Granata							

DESCRIPTION REF. TIES for Control Pts. (From old 1948 plans - S.H. 275 Sec. C) JOB NO.



PERSONNEL	TITLE	PERSONNEL	TITLE
Tanner			
Harker			
Oluk			
Harris			

COUNTY Mississippi DATE Nov-3-40
 S. R. U.S. 20 WEATHER cloudy
 SEC. _____ TEMP. 117°
 DESCRIPTION Reference Sheet # 91 U.S. 20 JOB NO. _____

LEFT	CENTER LINE	RIGHT
Sta. 155+01 = 240+39.71 Fd. P.K. Nail #340 (16-A)		Shiner in Cor. post. N.E. 63.10 Shiner in $\bar{\Phi}$ S. 98.15 Set new Shiner in $\bar{\Phi}$ S.W. 75.85 N. edge Pav't. 1.9 S. edge Pav't. 19.9
Sta. 160+31.81 = 245+70.57 Fd. P.K. Nail #341 (16-B)		Shiner in $\bar{\Phi}$ N.N.W. 84.73 Shiner in $\bar{\Phi}$ S. 71.67 Conc. Fly Man. S.S.E. 91.35 Conc. Fly Man. N.E. 91.22 N. edge Pav't. 0.70 S. edge Pav't. 21.30
Sta. 175+59.18 = 261+07.89 Lime City P.d. P.I. Fd. Brass adjustable Mon. #342 (17)		Shiner in $\bar{\Phi}$ S.S.W. 58.97 N.W. Cor. pump island S.E. Out. New rd Shiner in $\bar{\Phi}$ N.N.E. 55.07 N.N.W. to E. Canopy Bst. pump island some 92.99
Sta. 97+97.7 = 185+36.41 Fd. P.K. Nail		Shiner in $\bar{\Phi}$ #10701 N.E. 54.30 Shiner in $\bar{\Phi}$ S. 59.23 Shiner in 8" Pine S.W. 73.36 N. edge Pav't. 2.3 S. edge Pav't. 19.9

Note: old sta. 18 from 3-2-43 Reference Sheets