

O.D.O.T. DISTRICT 2 SURVEY OFFICE (USE ONLY)

PERSONNEL

REFERENCE NO. 16 B

SHEET 2 OF 4

NOTES LEU

DATE 3-13-18

ROUTE US 20

H.C. O'DONNELL

WEATHER CLOUDY

COUNTY WOOD

R.C. AUBLE
SEAMAN

TEMP. 34°

TOWNSHIP PERRYSBURG

DWG BY JAMES PID 102808

SECTION 11

T 4 N R USE

TYPE MONUMENT MAG/WASHER

ON SURFACE - ~~BELOW~~ ON

OFFSET CL PAVEMENT 12.5' LT : ~~RT~~

0.2' TO LT EDGE PAVEMENT

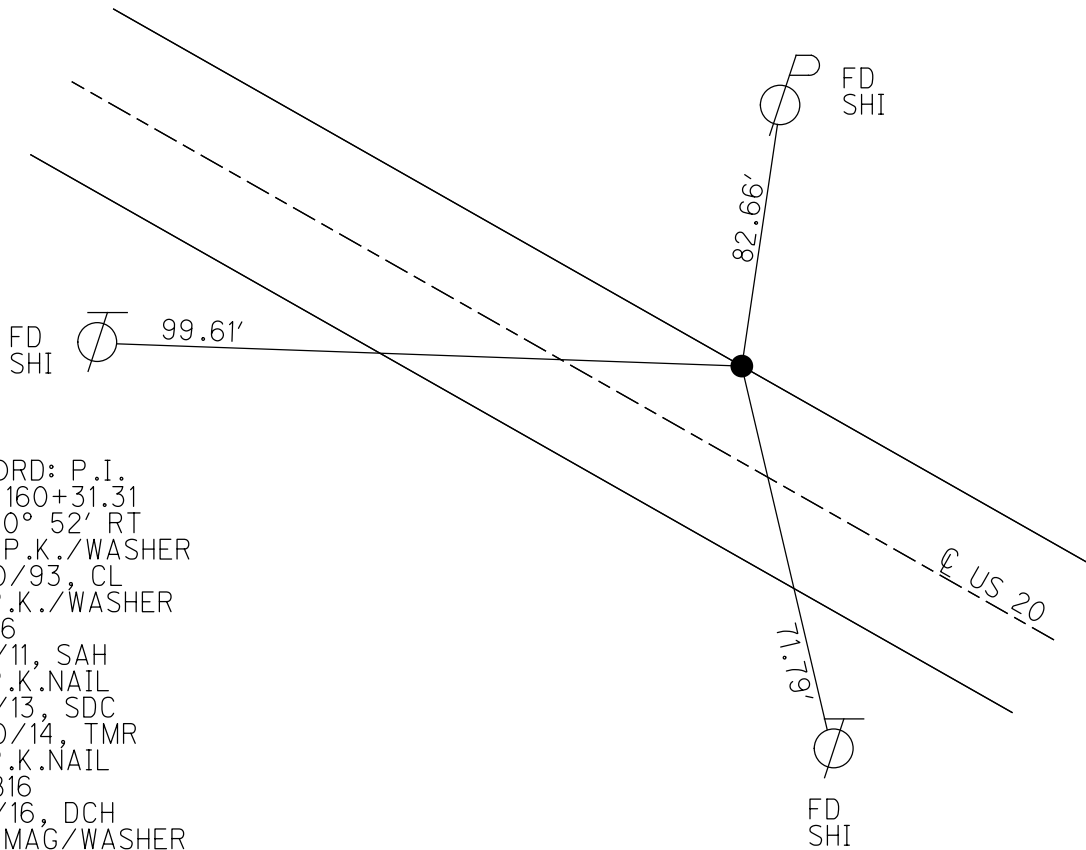
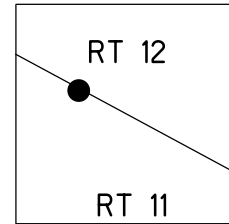
STATION: 246+00.31

HORIZ.DATUM: NAD83 2011

GEOID: NAVD88 2012A

GRID: NORTHING: 683400.903

EASTING: 1674884.912

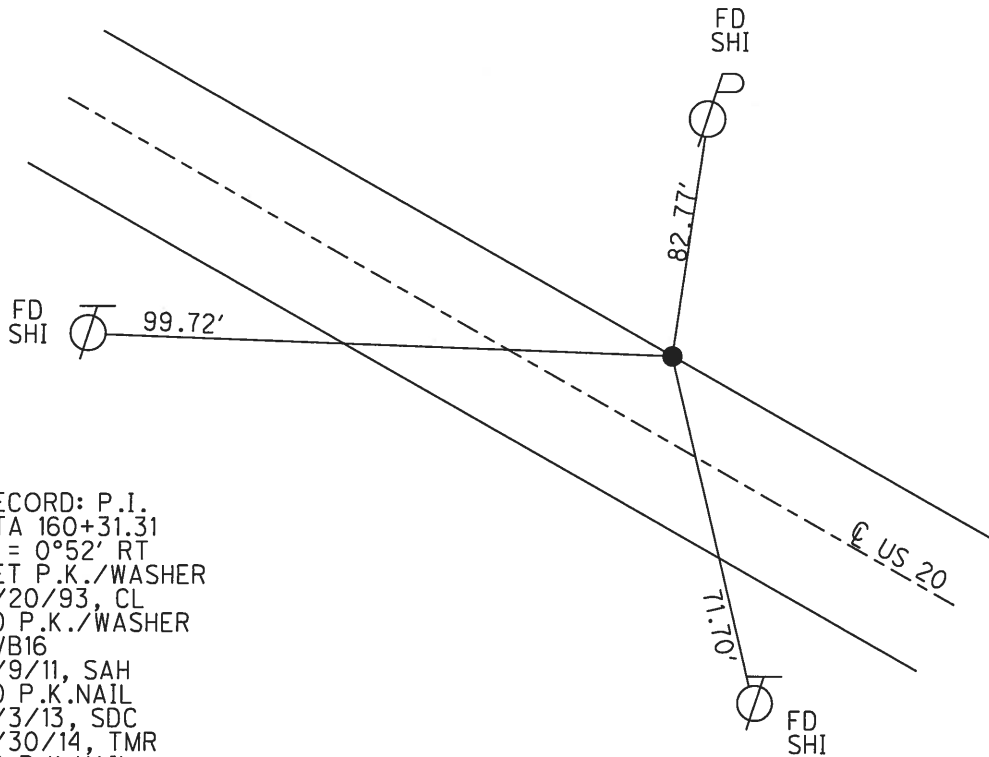
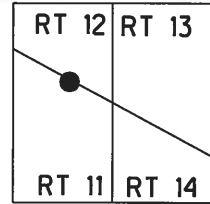


RECORD: P.I.
STA 160+31.31
 $\Delta = 0^\circ 52' RT$
SET P.K./WASHER
6/20/93, CL
FD P.K./WASHER
SVB16
9/9/11, SAH
FD P.K.NAIL
6/3/13, SDC
4/30/14, TMR
FD P.K.NAIL
REFB16
8/8/16, DCH
SET MAG/WASHER
BY COORDINATES
3-13-18, JFO
FD MAG/WASHER
1-2-19, JFO

O.D.O.T. DISTRICT 2 SURVEY OFFICE (USE ONLY)

PERSONNEL _____ REFERENCE NO. 16 B SHEET 2 OF 4
 NOTES LEU DATE 8-8-16 ROUTE US 20
 H.C. HOMAN WEATHER SUNNY COUNTY WOOD
 R.C. LEU TEMP. 74° TOWNSHIP PERRYSBURG
 SECTION R.T. 11
 T 4 N R USE

TYPE MONUMENT P.K.NAIL
 ON SURFACE - ~~BELOW~~ ON _____
 LEFT - CL PAV'T - ~~RIGHT~~ 11.4'
 ON TO LT EDGE PAVEMENT
 S.L.M. 246+00.31
 Grid: Northing: 683400.887 Easting: 1674885.064

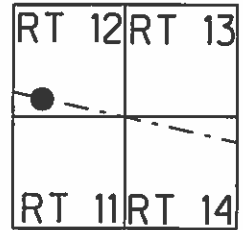


RECORD: P.I.
 STA 160+31.31
 $\Delta = 0^{\circ}52' \text{ RT}$
 SET P.K./WASHER
 6/20/93, CL
 FD P.K./WASHER
 SVB16
 9/9/11, SAH
 FD P.K.NAIL
 6/3/13, SDC
 4/30/14, TMR
 FD P.K.NAIL
 REFB16
 8/8/16, DCH

O.D.O.T. DISTRICT 2 SURVEY OFFICE (USE ONLY)

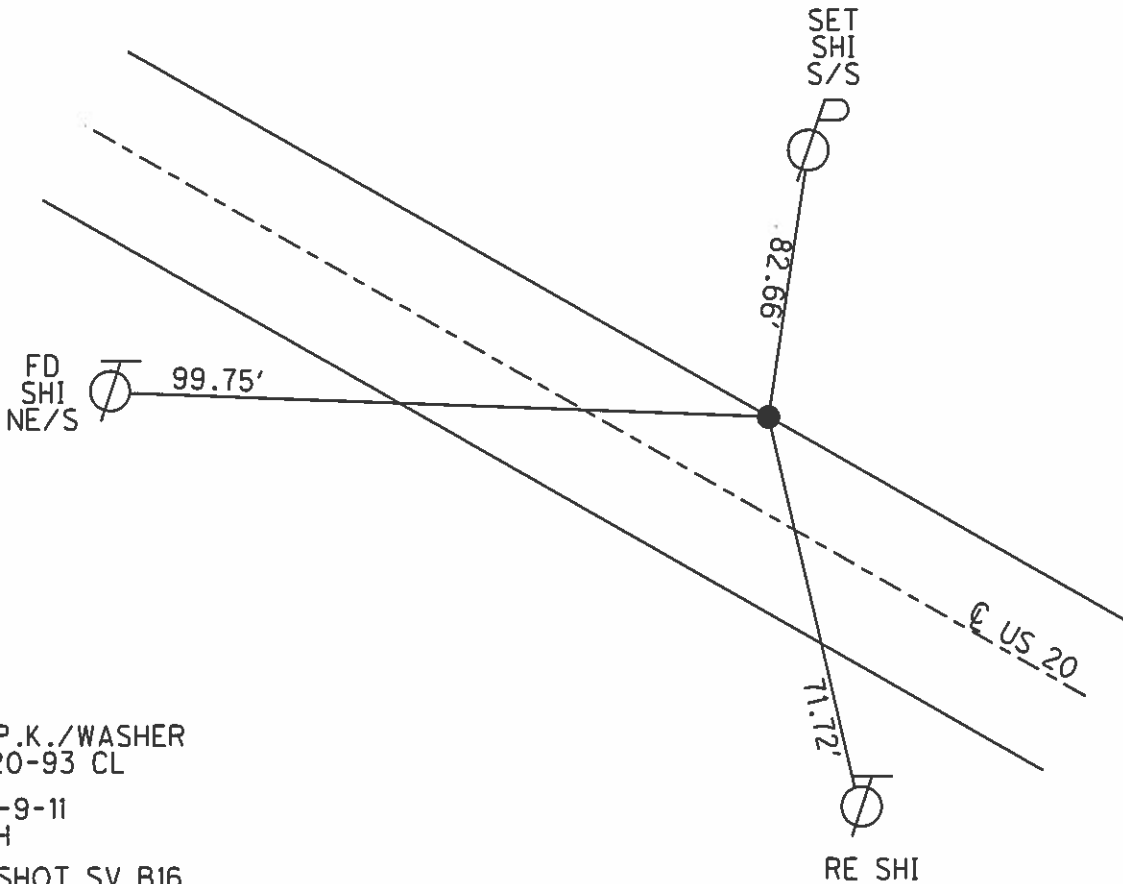
PERSONNEL _____ REFERENCE NO. 16-B SHEET 2 OF 19
 NOTES RHOADES DATE 6-3-13 ROUTE US 20
 H.C. CODER WEATHER CLOUDY COUNTY WOOD
 R.C. WESTFALL TEMP. 60° TOWNSHIP PERRYSBURG
 _____ SECTION 11
 _____ T 4 N R 5 E

TYPE MONUMENT P.K. NAIL
 ON SURFACE - ~~BELOW~~ YES
 LEFT - Q PAV'T - ~~RIGHT~~ 11.4
ON TO LT EDGE PAVEMENT
 S.L.M. 246+00.31



Grid: Northing: 683,400.9030 Easting: 1,674,884.9121

REC P.I. STA 160+31.31
 $\Delta = 0^\circ - 52' RT$



SET P.K./WASHER
 6-20-93 CL
 FD 9-9-11
 SAH
 GPS SHOT SV B16
 9-12-11
 NOT COVERED
 4-30-14 TMR

O.D.O.T. DISTRICT 2 SURVEY OFFICE

PERSONNEL

REFERENCE NO. 16-B

SHEET 2 OF 19

NOTES LOEHRKE

H.C. CURTIS

R.C. ROMERO

DATE 4-20-92

WEATHER Cloudy

TEMP. +60

ROUTE U.S. 20

COUNTY WOOD

TOWNSHIP PERRYSBURG

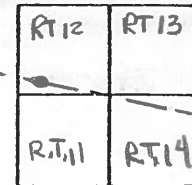
SECTION _____

T _____ R _____

Set. P.K. / WASHER

6-29-93

C.L.



TYPE MONUMENT P.K. NAIL

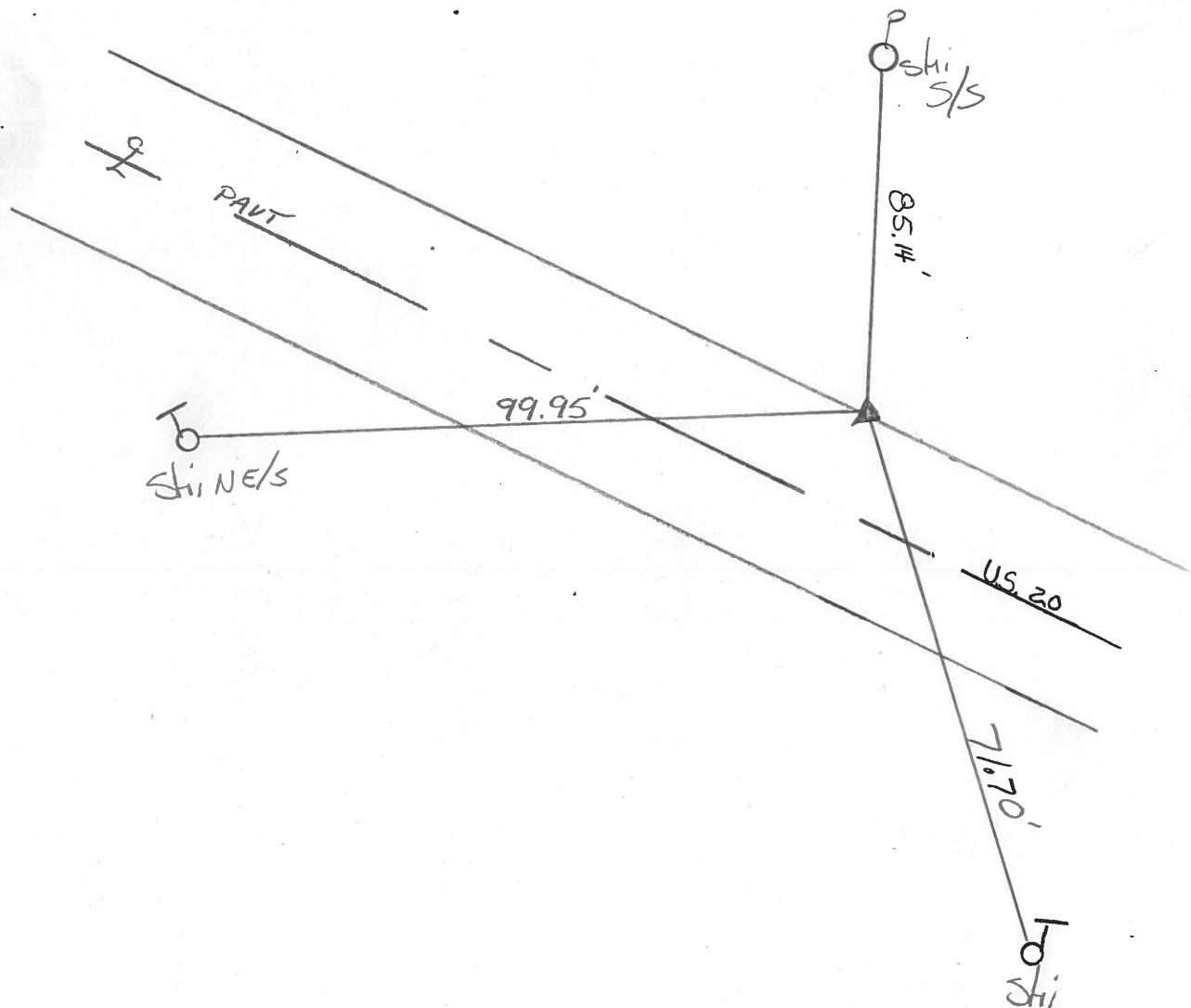
ON SURFACE - ~~BELOW~~ Yes

LEFT - ~~C~~ PAV'T. - RIGHT 11.4

ON TO LT EDGE PAVEMENT

S.L.M. 246+39

REC. P.I. Sta 100+31.31
 $\Delta = 0^{\circ} - 52' \text{ Rt}$



County Wood S.R. U.S. #20

Date 5/19/80

Township Perrysburg

Weather Sunny

Section R.T. 11 ~ R.T. 12

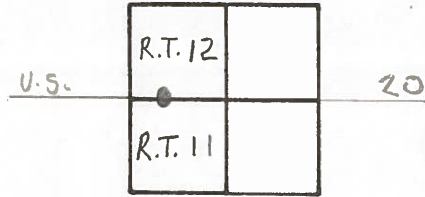
Temp. 62°

T_N, R_E

Personnel CRONIN SCHNEIDER

RIPPLE MOSSER

GEYMAN BARBOUR

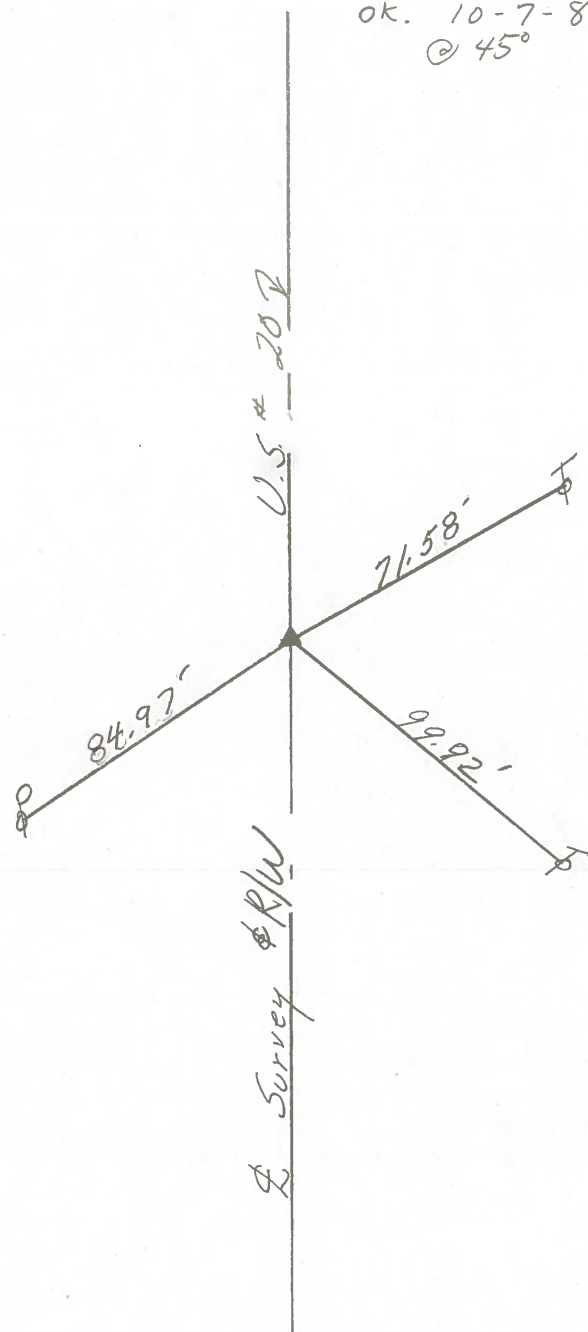


16-B

OK. 10-7-81
@ 45°

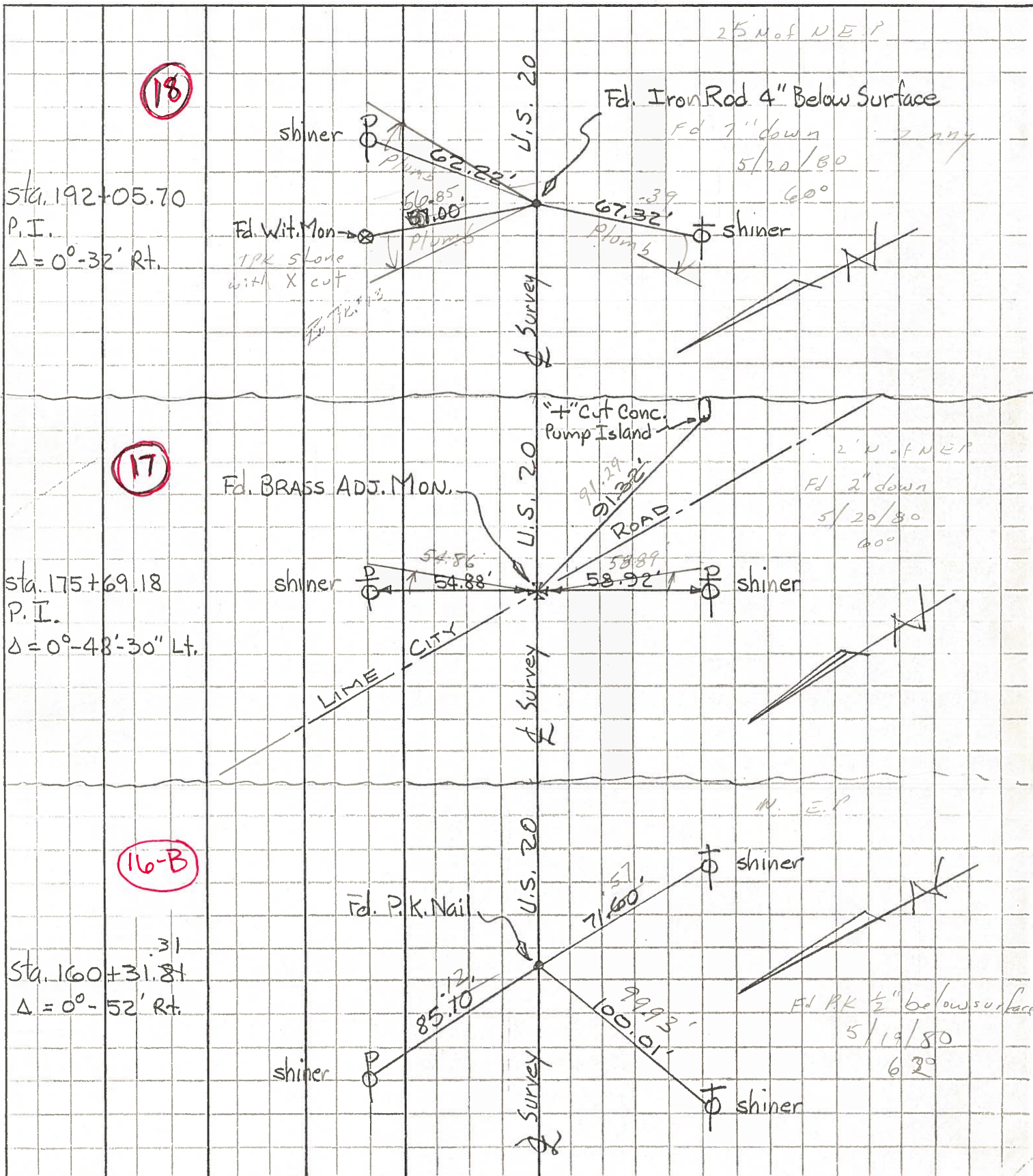


P.I.
 $\Delta = 00^{\circ} 52' \text{ Rt.}$
 $160 + 31.31$
 Ed. P.K. $\frac{1}{2}$ " below surface



PERSONNEL	TITLE	PERSONNEL	TITLE	COUNTY	DATE
Tomsic		Gancarz		WOOD	AUG. 17, 1972
Neuser				U.S. 20	Rechecked Dec. 23-75
Vanyo					WEATHER
Granata				SEC. Perrysburg TWP.	TEMP.

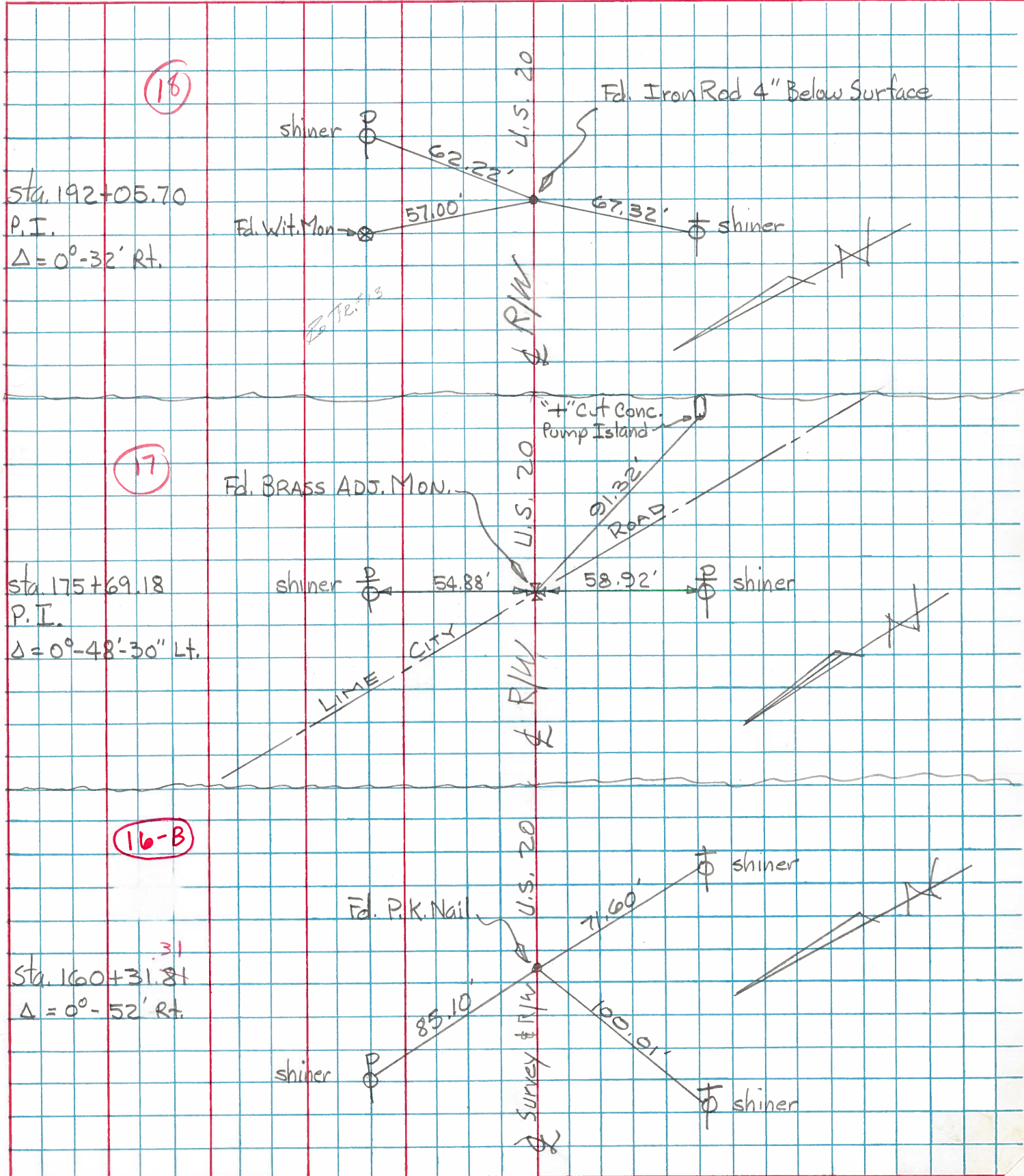
DESCRIPTION REF. CONTROL PTS. LEFT CENTER LINE RIGHT JOB NO.



PERSONNEL	TITLE	PERSONNEL	TITLE
Tomsic		Gancarz	
Neuser			
Vanyo			
Granata			

COUNTY WOOD DATE Aug. 17, 1972
 S. R. U. S. 20 RECHECKED Dec. 23-75
 SEC. Perrysburg TWP. WEATHER _____
 TEMP. _____

DESCRIPTION REF. CONTROL PTS. LEFT CENTER LINE RIGHT JOB NO.



PERSONNEL	TITLE	PERSONNEL	TITLE	COUNTY	DATE	WEATHER	TEMP.
Tanner				Wood	Vol. 3-4		
Hunter				U.S. 20			
2-1st							
1120-5							

DESCRIPTION *Reference Point d.O.T. U.S. 20* JOB NO.

LEFT	CENTER LINE	RIGHT
<p>Sta. 155+01 = 240+39.71</p> <p>Fd. P.R. Mail #340</p> <p>(16-A)</p>		<p>Shiner in dcr. post. N.E. 63.10</p> <p>Shiner in $\bar{\phi}$ S. 98.15</p> <p>Set new Shiner in $\bar{\phi}$ S.W. 75.85</p> <p>N. edge Pav't. 1.9</p> <p>S. edge Pav't. 19.9</p>
<p>Sta. 160+31.81 = 245+70.57</p> <p>Fd. P.R. Mail #341</p> <p>(16-B)</p>		<p>Shiner in $\bar{\phi}$ N.N.W. 84.73</p> <p>Shiner in $\bar{\phi}$ S. 71.67</p> <p>Conc. Pylon. S.S.E. 91.35</p> <p>Conc. Pylon. N.E. 91.22</p> <p>N. edge Pav't. 0.70</p> <p>S. edge Pav't. 21.30</p>
<p>Sta. 175+09.14 = 241+07.89</p> <p>Lame City P.d.</p> <p>P.I. Fd. Brass adjustable Mon. #342</p> <p>(17)</p>		<p>Shiner in $\bar{\phi}$ S.S.W. 58.97</p> <p>N.W. Cor pump island S.E. Jct. New. 55.00</p> <p>Shiner in $\bar{\phi}$ N.N.E. 55.00</p> <p>N.N.W. to E. Canopy Post pump island 55.00 92.99</p>
<p>Sta. 97+97.7 = 185+36.41</p> <p>Fd. P.R. Mail</p>		<p>Shiner in $\bar{\phi}$ # 10701 N.E. 54.30</p> <p>Shiner in $\bar{\phi}$ S. 59.23</p> <p>Shiner in 8" Pine S.W. 73.36</p> <p>N. edge Pav't. 2.3</p> <p>S. edge Pav't. 19.9</p>

Note: All elevations are from the 1928 Reference Point.