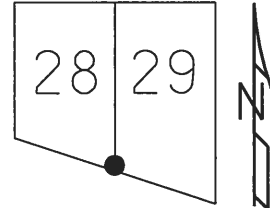


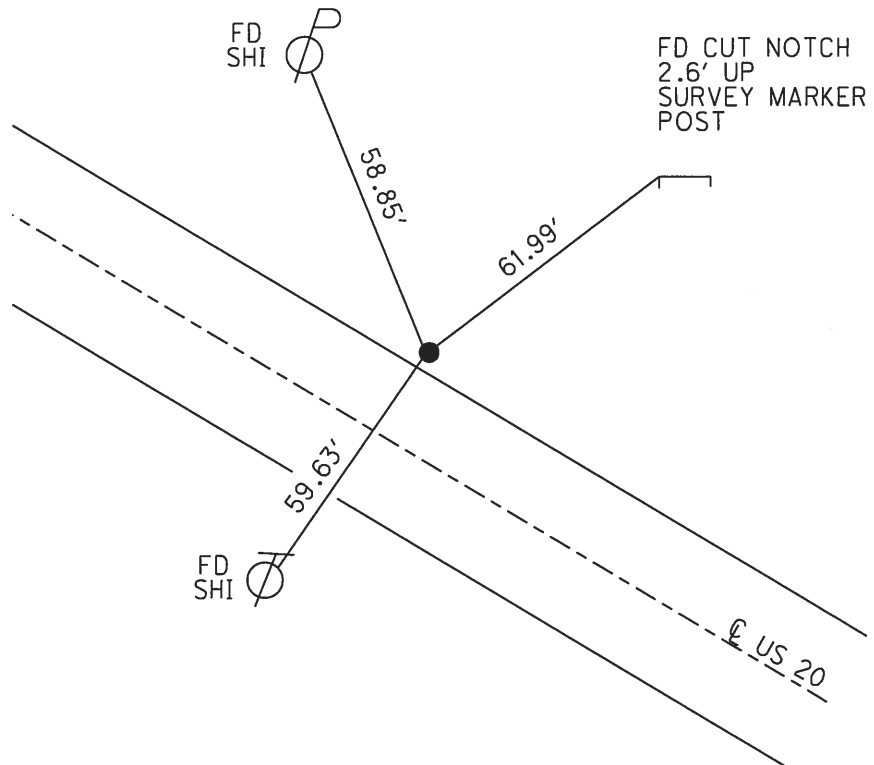
O.D.O.T. DISTRICT 2 SURVEY OFFICE (USE ONLY)

PERSONNEL \_\_\_\_\_ REFERENCE NO. 26 SHEET 5 OF 23  
 NOTES LEU DATE 8/10/16 ROUTE US 20  
 H.C. HOMAN WEATHER CLEAR COUNTY WOOD  
 R.C. LEU TEMP. 78° TOWNSHIP LAKE  
 \_\_\_\_\_ SECTION RT 29  
 \_\_\_\_\_ T 7 N R 12 E

TYPE MONUMENT \_\_\_\_\_ CMON \_\_\_\_\_  
 ON SURFACE - ~~BELOW~~ \_\_\_\_\_ ON \_\_\_\_\_  
 LEFT - ℄ PAV'T - ~~RIGHT~~ \_\_\_\_\_ 14.0'  
 2.0' LT TO LT EDGE PAVEMENT  
 S.L.M. \_\_\_\_\_ 395+85  
 GRID: NORTHING: 675931.053 EASTING: 1687826.458



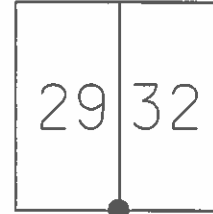
RECORD: P.I.  
 CURVE DATA  
 1948 PLANS SH 275  
 STA 309+77.50  
 $\Delta=0^{\circ} 41' 30''$  LT  
 $D=0^{\circ} 04'$   
 $R=85943.00'$   
 $T=518.75'$   
 $L=1037.50'$   
 $E=1.57'$   
 FD CMON  
 1953, 1972, 1975  
 FD CMON  
 4.5" DOWN  
 W/"X" CUT IN TOP  
 1980  
 FD P.K./WASHER  
 1992  
 SET P.K./WASHER  
 1993  
 FD P.K./WASHER  
 6/24/02, KPM  
 FD P.K./WASHER  
 REF26  
 8/10/19, DCH  
 FD CMON  
 BROKEN  
 USED HIGH POINT  
 OF CONC.  
 10/23/17, DCH



O.D.O.T. DISTRICT 2 SURVEY OFFICE (USE ONLY)

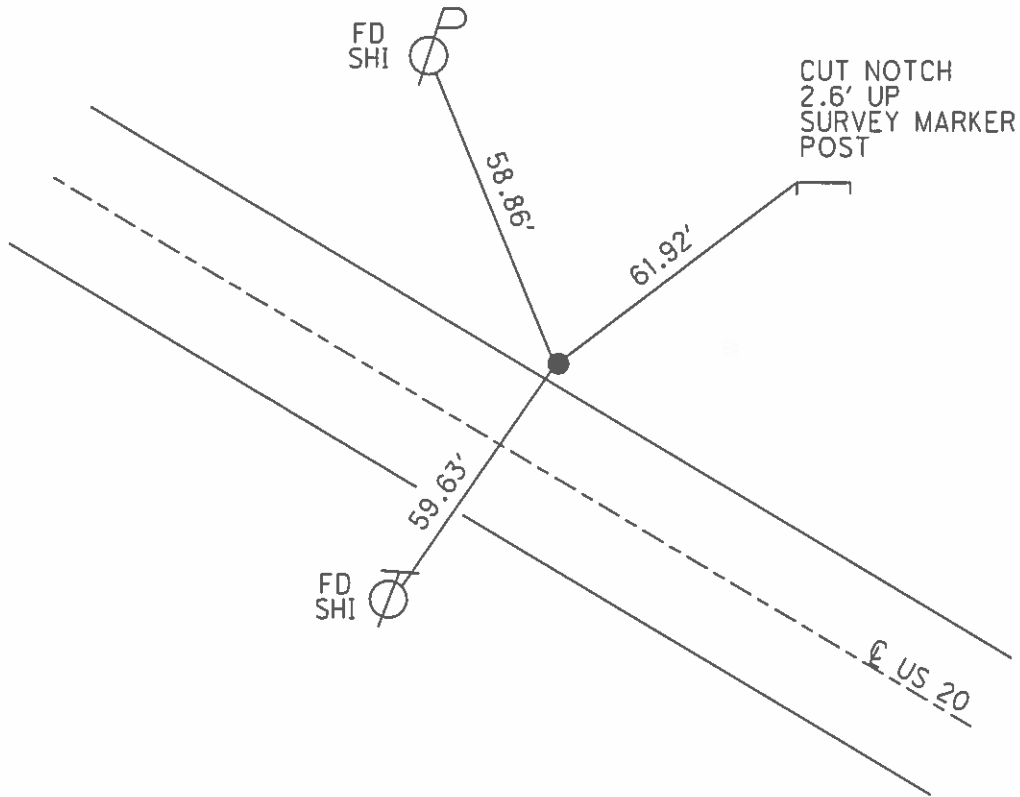
PERSONNEL \_\_\_\_\_ REFERENCE NO. 26 SHEET 5 OF 19  
 NOTES MALINSKY DATE 6/24/02 ROUTE US 20  
 H.C. MOSER WEATHER CLEAR COUNTY WOOD  
 R.C. SIEFRING TEMP. 95° TOWNSHIP LAKE  
BEAUMONT SECTION RT 29  
 T 7 N R 12 E

TYPE MONUMENT \_\_\_\_\_ PK/WASHER \_\_\_\_\_  
 ON SURFACE - ~~BELOW~~ \_\_\_\_\_ ON \_\_\_\_\_  
 LEFT - CL PAV'T - ~~RIGHT~~ \_\_\_\_\_ 14.0'  
 2.0' LT TO LT EDGE PAVEMENT  
 S.L.M. \_\_\_\_\_ 395+85 \_\_\_\_\_



GRID: NORTHING: \_\_\_\_\_ EASTING: \_\_\_\_\_

RECORD: CURVE DATA  
 1948 PLANS SH 275  
 STA 309+77.50  
 $\Delta=0^{\circ} 41' 30''$  LT  
 $D=0^{\circ} 04'$   
 $R=85943.00'$   
 $T=518.75'$   
 $L=1037.50'$   
 $E=1.57'$



# O.D.O.T. DISTRICT 2 SURVEY OFFICE

PERSONNEL \_\_\_\_\_

REFERENCE NO. 26

SHEET 8 OF 19

NOTES LOEHRKE

H.C. CURTIS

DATE 4-20-92

ROUTE U.S. 20

R.C. Romero

WEATHER CLOUDY - WINDY

COUNTY WOOD

TEMP. +65

TOWNSHIP LAKE

SECTION \_\_\_\_\_

T \_\_\_\_\_ R \_\_\_\_\_

TYPE MONUMENT P.K./WASHER

Reset  
6-29-93  
e.l.

ON SURFACE - BELOW Yes

LEFT-☐ PAV'T. - RIGHT 14.0'

2.0' TO EDGE PAVEMENT

S.L.M. 395785

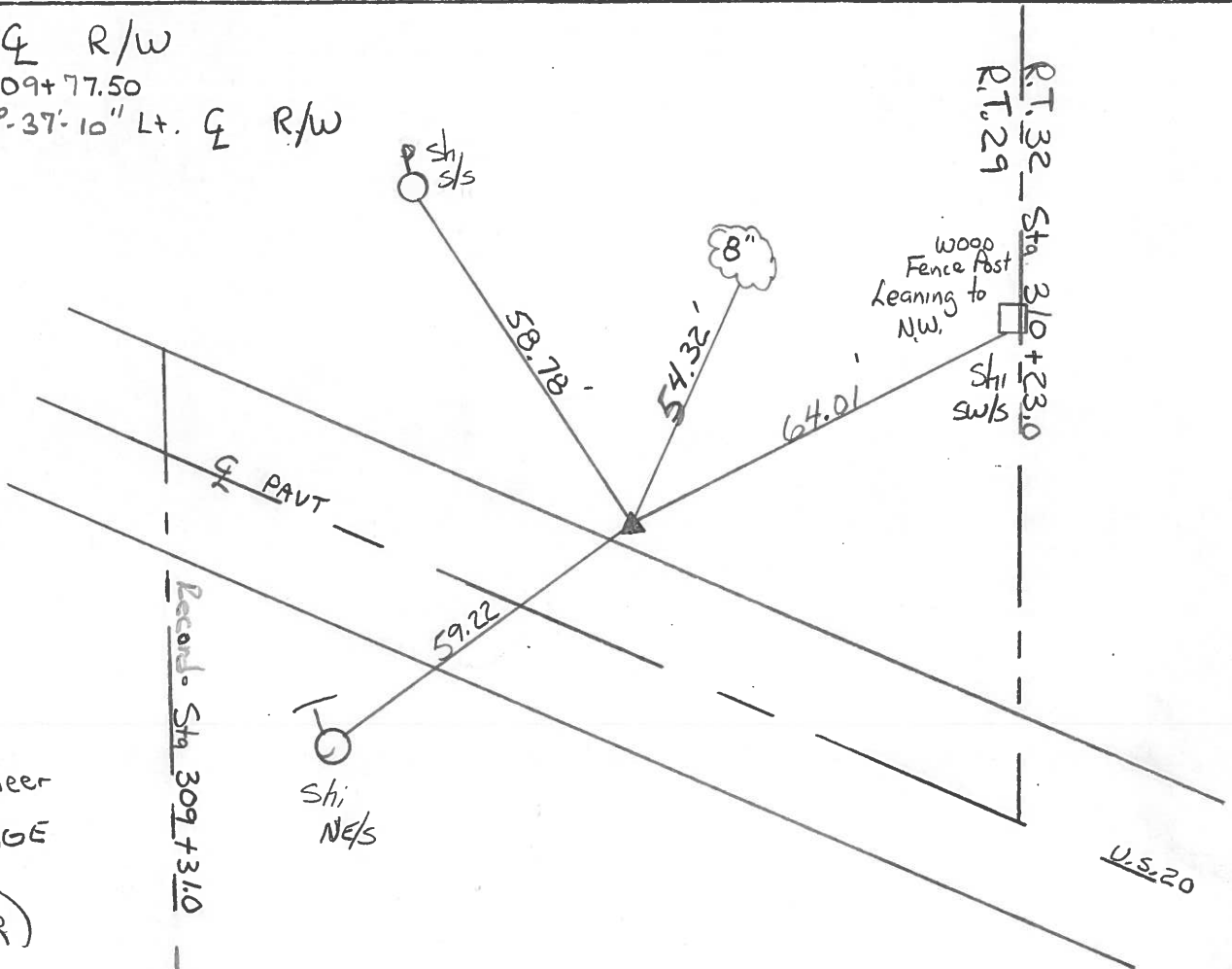
R.T. 29	R.T. 32
R.T. 30	R.T. 31



P.I. ☐ R/W

Sta 309+77.50

$\Delta = 0^\circ - 37' - 10''$  Lt. ☐ R/W



Pioneer  
LODGE  
(BAR)

Record Sta 309+73.10  
RT. 31  
RT. 30

REC. 1948 PLANS S.H. 275
Sta. 309+77.50
$\Delta = 0^\circ - 41' - 30''$ Lt ON <u>☐</u> SURVEY
D = 0'-04'
R = 85943.00'
T = 518.75'
L = 1037.50'
E = 1.57'

County Wood S.R. U.S.#20

Date 5/20/80

Township Lake

Weather sunny-windy

Section R.T. 29-30-31-32

Temp. 62°

T N, R E

Personnel CRONIN

	R.T. 29	R.T. 32	
U.S.			20
	R.T. 30	R.T. 31	

RIPPLE

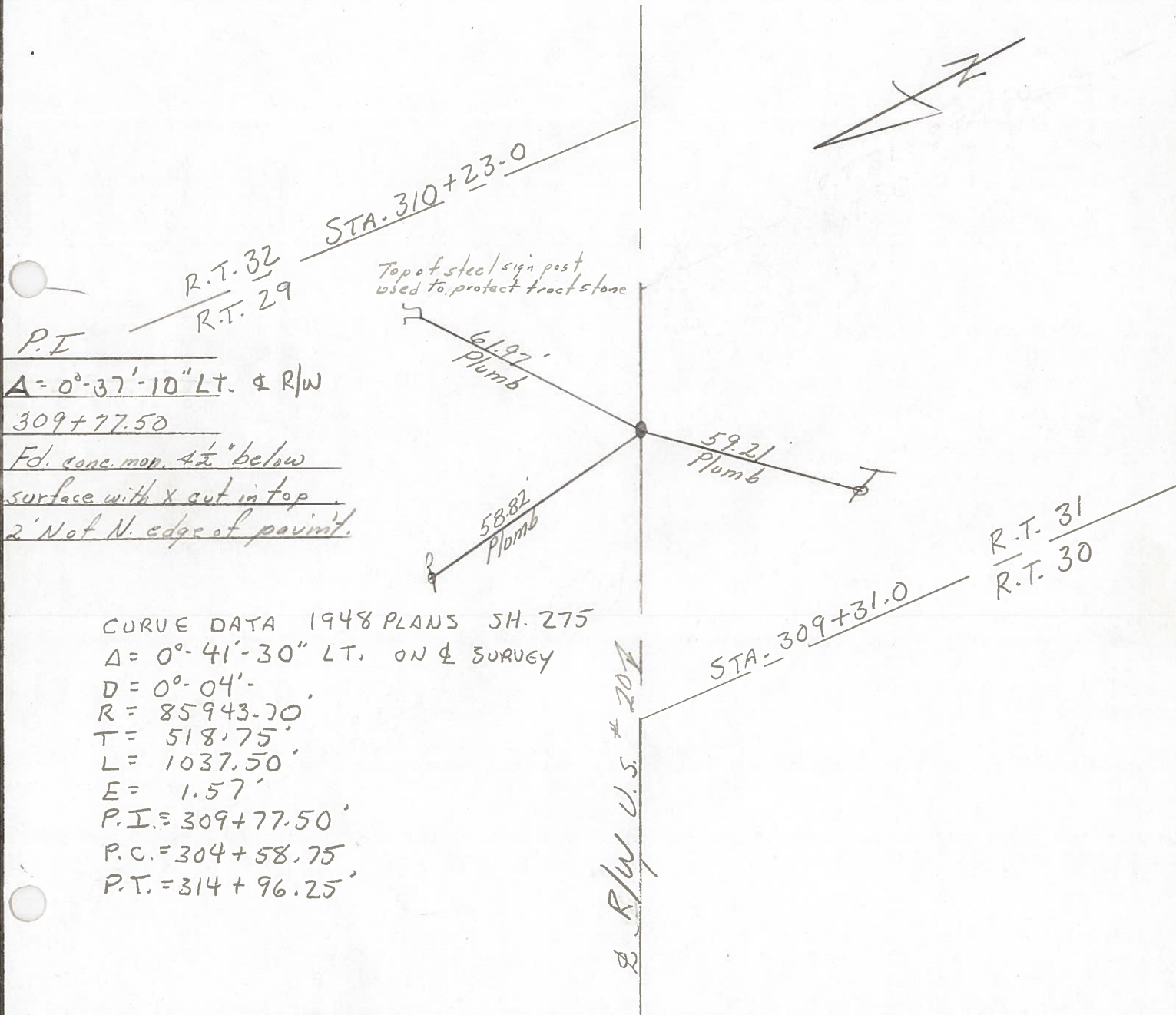
GEYMAN

MOSSER

BARBOUR



#26



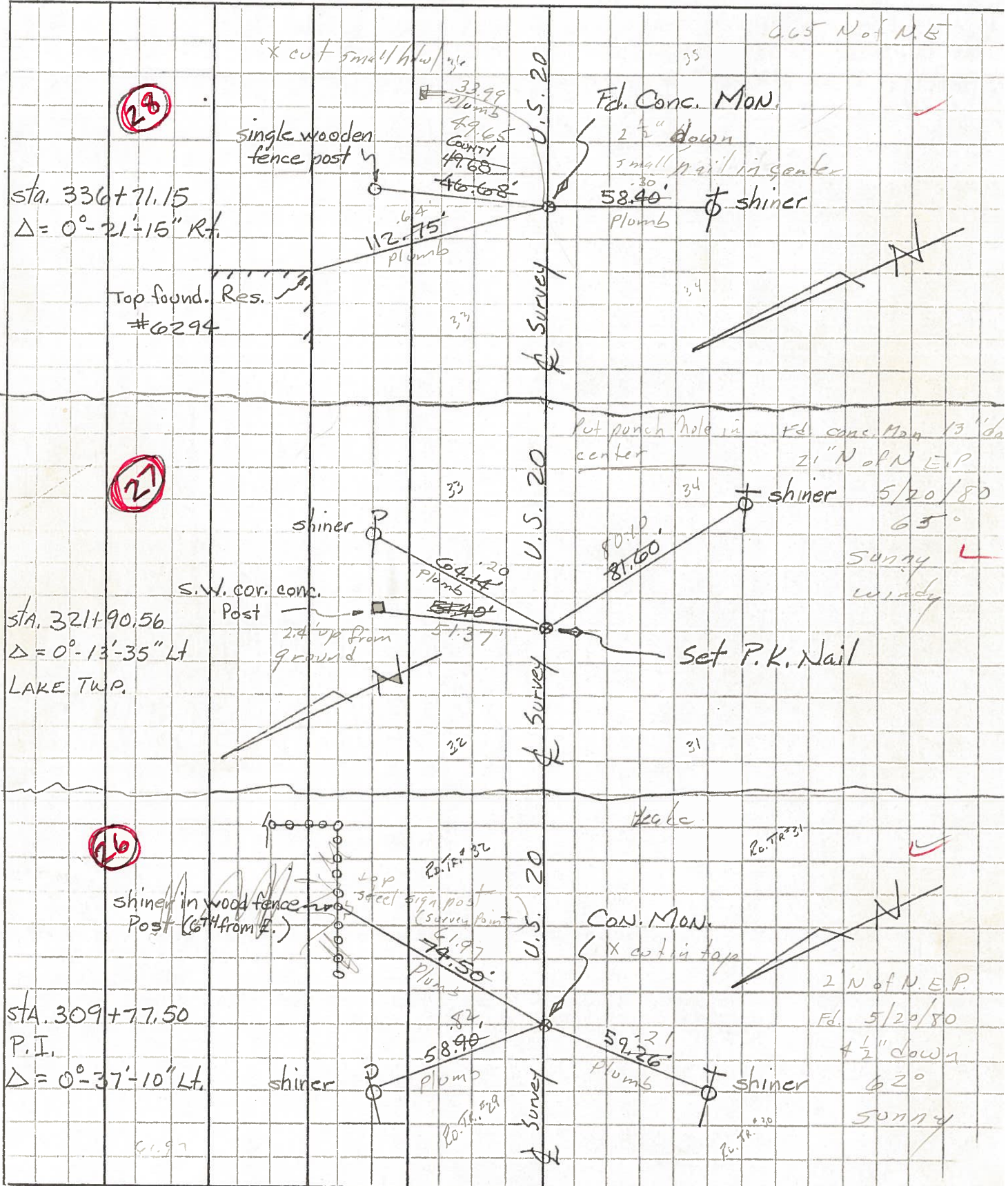
P.I.  
 $\Delta = 0^\circ - 37' - 10''$  LT. & R/W  
 309+77.50  
 Fd. conc. mon.  $4\frac{1}{2}''$  below  
 surface with X cut in top  
 2' Not N. edge of paint.

CURVE DATA 1948 PLANS SH. 275  
 $\Delta = 0^\circ - 41' - 30''$  LT. ON & SURVEY  
 $D = 0^\circ - 04'$   
 $R = 85943.70'$   
 $T = 518.75'$   
 $L = 1037.50'$   
 $E = 1.57'$   
 $P.I. = 309+77.50'$   
 $P.C. = 304+58.75'$   
 $P.T. = 314+96.25'$

R/W U.S. #20

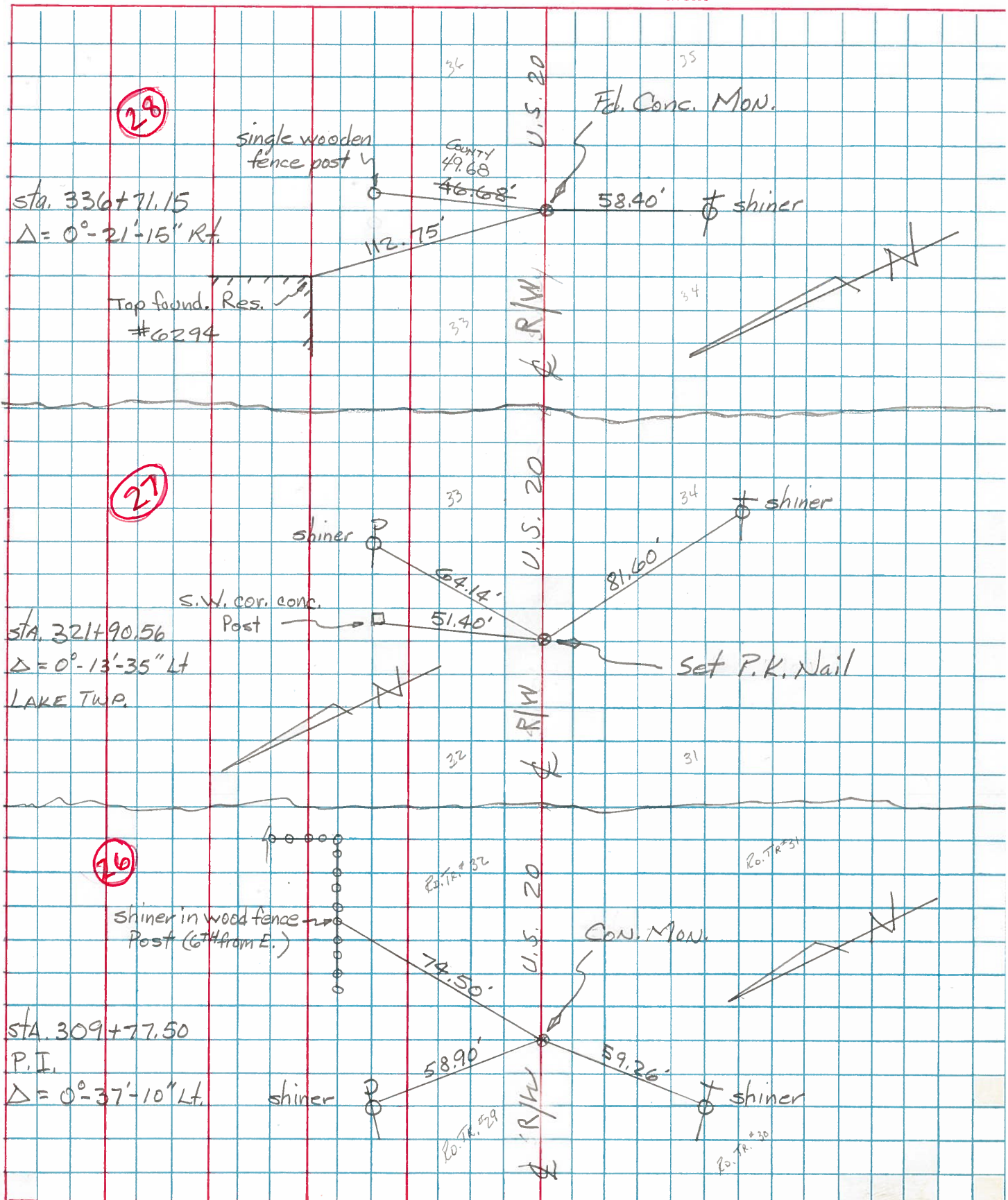
PERSONNEL	TITLE	PERSONNEL	TITLE	COUNTY	WOOD	DATE	Aug. 15 19:
Tomsic		Gaucary		S. R.	U. S. 20	Rechecked	Dec -23
Neuser				SEC.	LAKE & TROY TWP.	WEATHER	
Vanyo							
Granata							

DESCRIPTION R.F. Control Pts. (Use sta. on old 1948 plans SH. 275 - sec. C.)



PERSONNEL	TITLE	PERSONNEL	TITLE	COUNTY	WOOD	DATE	Aug. 15, 1977
Tomsic		Gancarz		S. R.	U. S. 20	Rechecked	Dec -23-
Neuser				SEC.	LAKE & TROY TWP.	WEATHER	
Vanyo				TEMP.			
Granata							

DESCRIPTION REF. Control Pts. (Use sta. on old 1948 plans SH. 275 - sec. C.)



PERSONNEL	TITLE	PERSONNEL	TITLE	COUNTY	DATE
				Wood	
				S. R. U.S. #70	WEATHER
				SEC.	TEMP.

DESCRIPTION	LEFT	CENTER LINE	RIGHT	JOB NO.
Sta. 282+32.90 P.I. Δ = 0°-05' Lt. Conc. Mt. <b>(24)</b>	#346		X-cut on C.B. S.E. 81.0 Shiner in T.P. W. 80.0 Shiner in 15" maple N.N.W. 147.0 N. to N. edge of pavement 1.9	
Sta. 309+80.19 P.I. Δ = 0°-30' Lt. Conc. mt. <b>(26)</b>	#347		Shiner in T.P. S.W. 59.4 Shiner in P.P. N. 59.0 Shiner in 12" catalpa N.E. 55.0 N. to N. edge of pav't. 1.8	
Sta. 321+93.37 Fd. Conc. Mt. broken off 8" below surface <b>(27)</b>			Shiner in P.P. E. 66.0 Shiner in T.P. S.E. 81.6 N.E. to S.W. Cor. Conc. A.P. 51.4 1.30' N. of N. edge pave.	
Sta. 336+74.28 Δ = 0°-21' Rt. Conc. mt. <b>(28)</b>	#348		Boat spt. in 20" stump N.E. 64.0 Shiner in 24" stump N.W. 97.0 Shiner in T.P. S.W. 58.0 6.60' N. of N. edge pave.	
Sta. 350+63.30 Δ = 0°-2'-30" Rt. P.P. spike <b>(30)</b>	#349	(See pages 5-6)	N.E. Cor. Conc. perch S.W. 64.0 N.E. Cor. conc. Pdn. Gae. Sta. S.W. 71.0 Shiner in 20" maple S.S.E. 73.0 N. to stone on R. 68.0 S. to shiner in twin Ash 53.0	