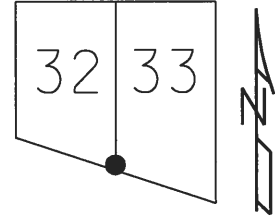


O.D.O.T. DISTRICT 2 SURVEY OFFICE (USE ONLY)

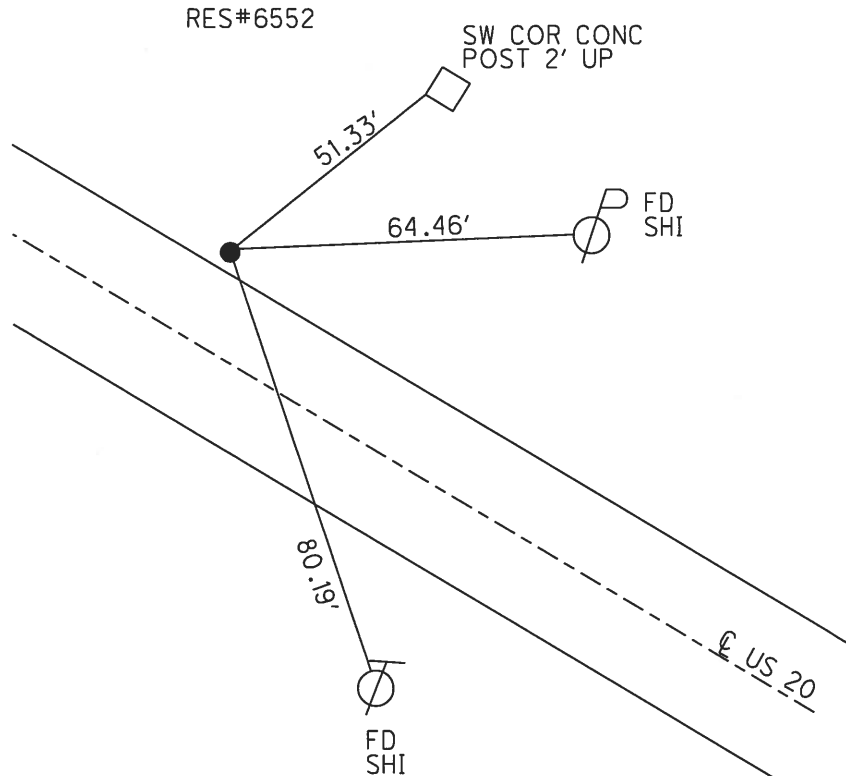
PERSONNEL _____ REFERENCE NO. 27 SHEET 6 OF 23
 NOTES LEU _____ DATE 8/10/19 ROUTE US 20
 H.C. HOMAN _____ WEATHER CLEAR COUNTY WOOD
 R.C. LEU _____ TEMP. 78° TOWNSHIP LAKE
 _____ SECTION RT 32
 _____ T 7 N R 12 E

TYPE MONUMENT MAG/WASHER
 ON SURFACE - ~~BELOW~~ ON _____
 LEFT - ℄ PAV'T - ~~RIGHT~~ 13.0'
 1.0' LT TO LT EDGE PAVEMENT
 S.L.M. 407+99



GRID: NORTHING: 675326.074 EASTING: 1688877.221

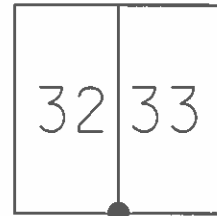
RECORD: P.I.
 STA 321+90.56
 $\Delta = 0^\circ 13' 35''$ LT
 ℄ R/W
 FD CMON
 BROKEN OFF
 1953
 FD P.K. NAIL
 1972, 1975
 FD CMON
 13" DOWN
 SET PUNCHED HOLE
 IN CENTER
 1980
 FD P.K./WASHER
 1992
 SET P.K./WASHER
 1993
 FD P.K./WASHER
 6/24/02, KPM
 SET MAG/WASHER
 3/4/04, MB
 FD MAG/WASHER
 REF27
 8/10/16
 FD MONBOX
 CMON W/HOLE
 10/23/17, DCH



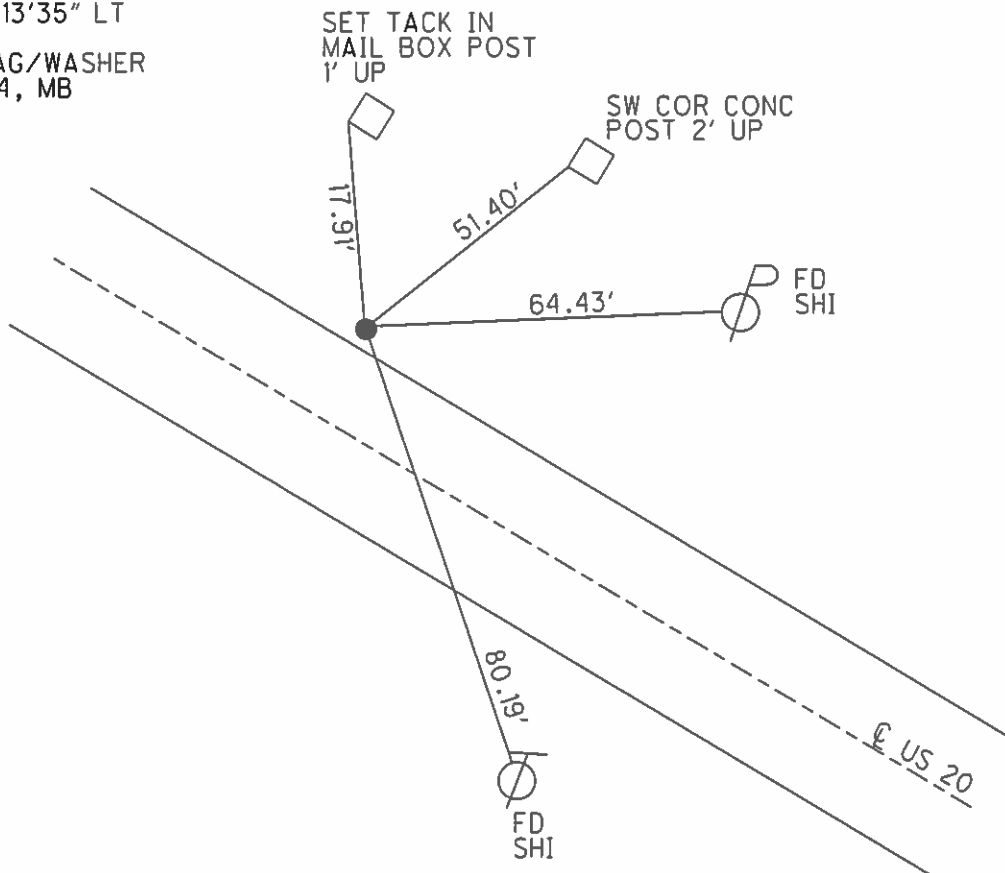
O.D.O.T. DISTRICT 2 SURVEY OFFICE (USE ONLY)

PERSONNEL _____ REFERENCE NO. 27 SHEET 6 OF 19
 NOTES MALINSKY _____ DATE 6/24/02 ROUTE US 20
 H.C. MOSER _____ WEATHER CLEAR COUNTY WOOD
 R.C. SIEFRING _____ TEMP. 95° TOWNSHIP LAKE
 BEAUMONT _____ SECTION RT 32
 T 7 N R 12 E

TYPE MONUMENT _____ P.K./WASHER _____
 ON SURFACE - ~~BELOW~~ _____ ON _____
 LEFT - C PAV'T - ~~RIGHT~~ _____ 13.0'
 1.0' LT TO LT EDGE PAVEMENT
 S.L.M. _____ 407+99
 GRID: NORTHING: _____ EASTING: _____



RECORD: P.I.
 STA 321+90.56
 $\Delta = 0^\circ 13'35''$ LT
 C R/W
 SET MAG/WASHER
 3/4/04, MB



O.D.O.T. DISTRICT 2 SURVEY OFFICE

PERSONNEL

REFERENCE NO. 27

SHEET 9 OF 19

NOTES LOEHRKE

H.C. CURTIS

R.C. Romero

DATE 4-20-92

WEATHER Cloudy - Windy

TEMP. +64

ROUTE U.S. 20

COUNTY WOOD

TOWNSHIP LAKE

SECTION _____

T _____ R _____

Reset

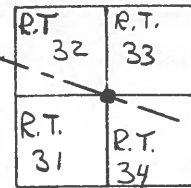
TYPE MONUMENT P.K. / WASHER 6-29-93

ON SURFACE - BELOW Yes C.L.

LEFT-C PAV'T. - RIGHT 13.6

1/4 ^{to} 1/4 EDGE PAVEMENT

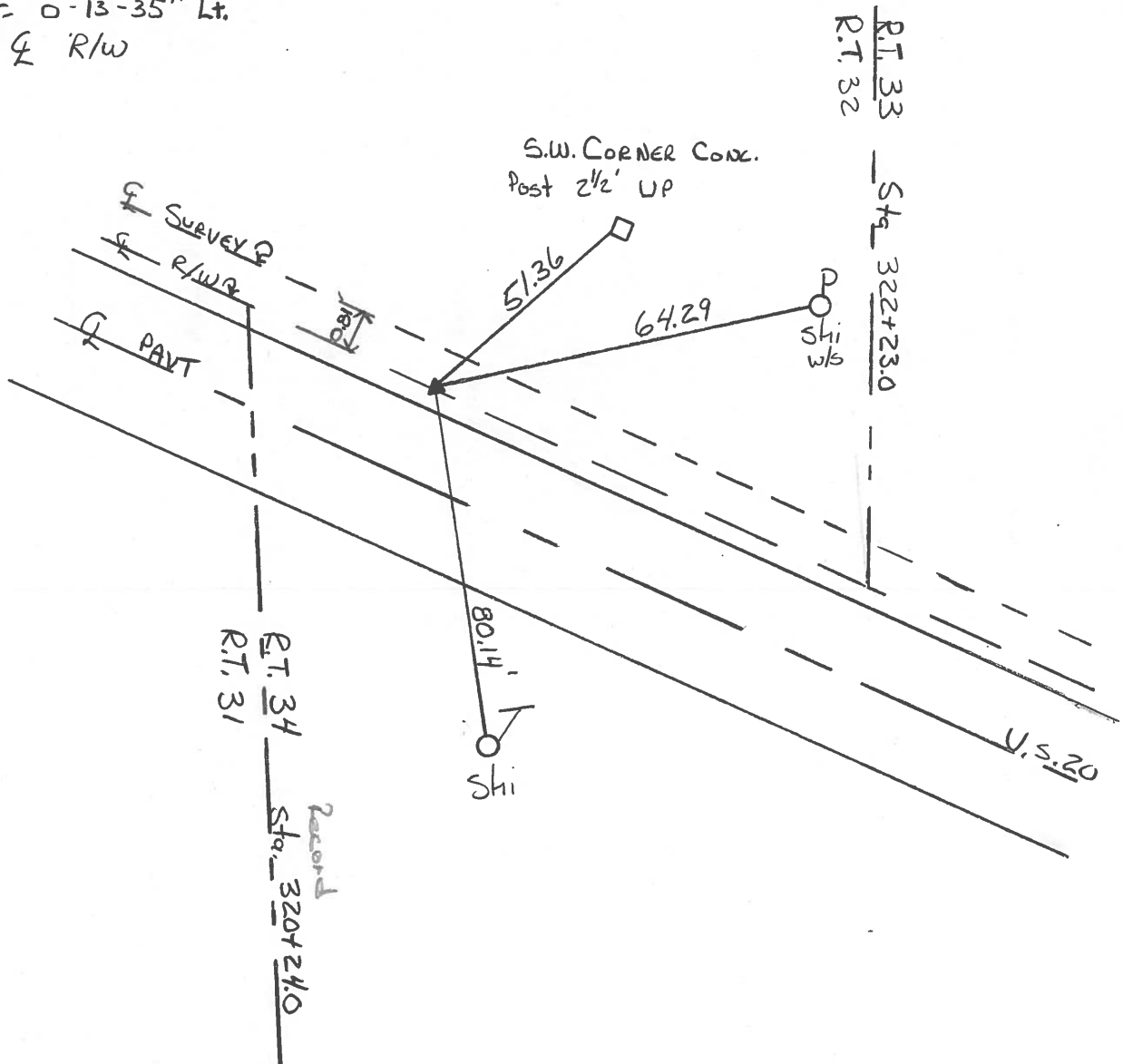
S.L.M. 407+99



P.I. Sta 321+90.56

$\Delta = 0^{\circ} 13' 35''$ Lt.

$\frac{1}{2}$ R/W



Q.D.O.T. DISTRICT 2 SURVEY OFFICE

Sht. 10 of 30

County Wood S.R. U.S.#20

Township Lake

Section _____

T N, R E

Personnel CRONIN

RIPPLE

GEYMAN

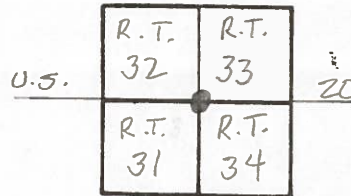
MOSSER

BARBOUR

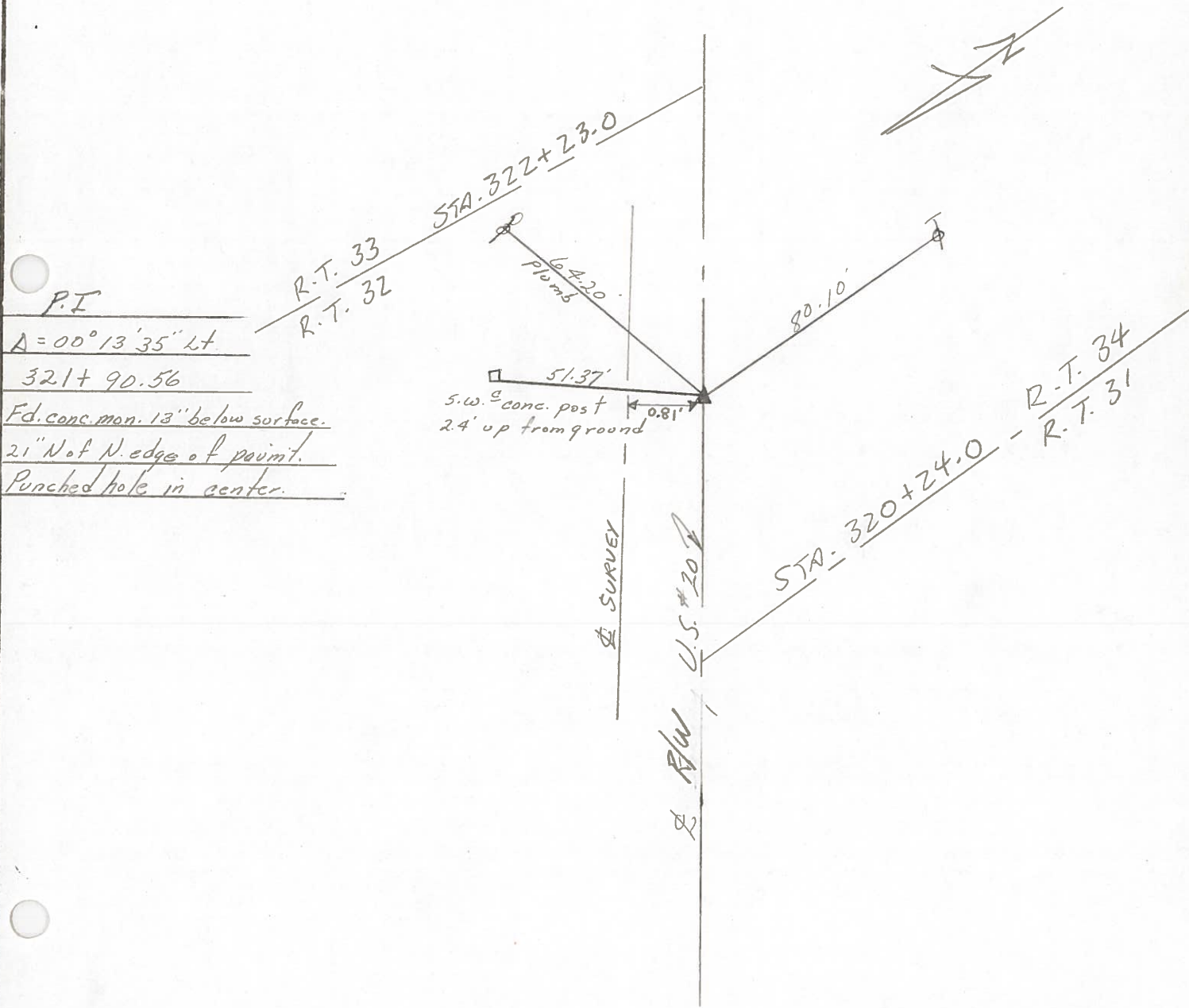
Date 5/20/80 Drawn 5/27/80

Weather sunny - windy

Temp. 65°



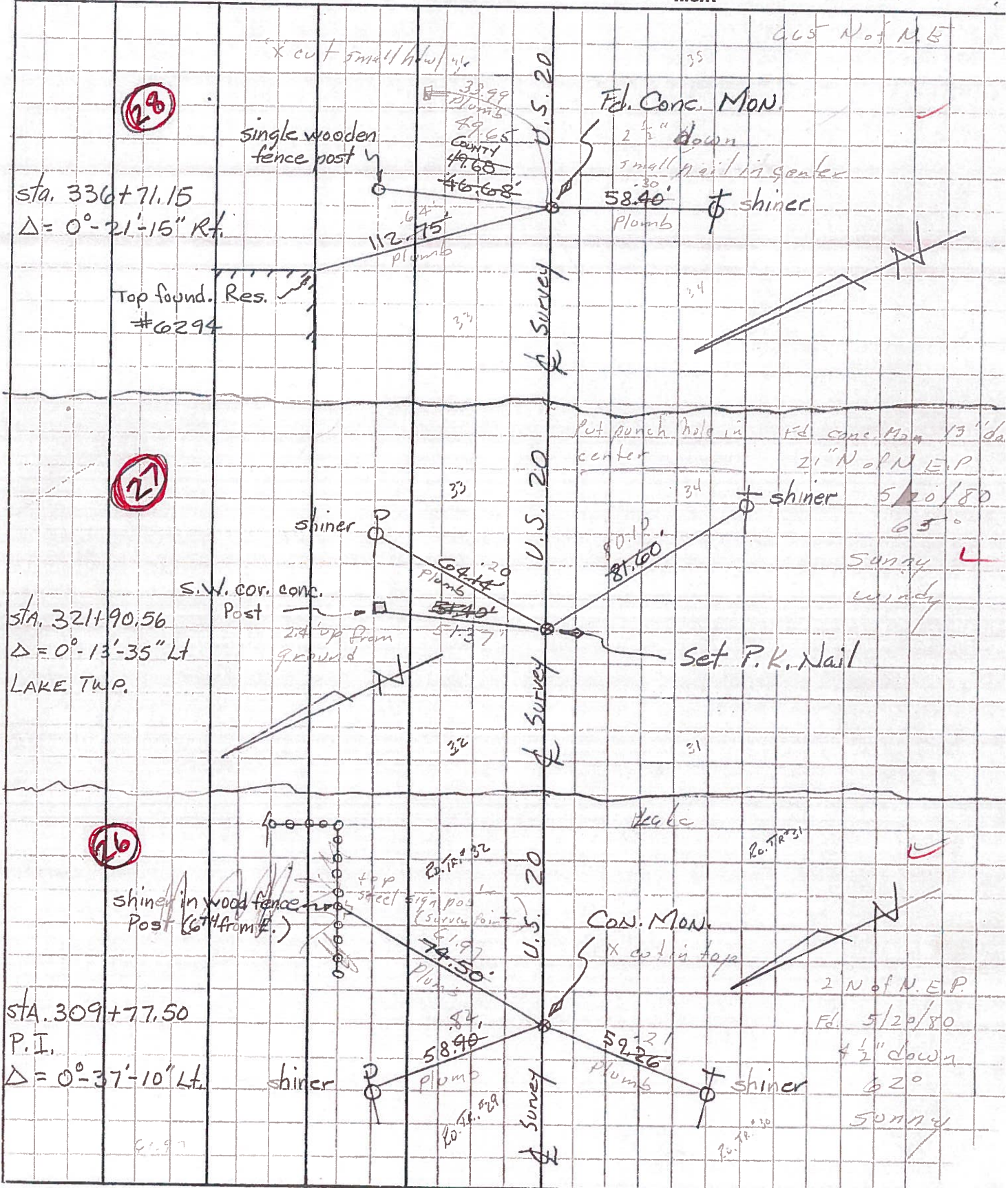
#27



P.I.
 $A = 00^{\circ}13'35''$ Lt
 321 + 90.56
 Fd. conc. mon. 13" below surface.
 2" Not N. edge of permit.
 Punched hole in center.

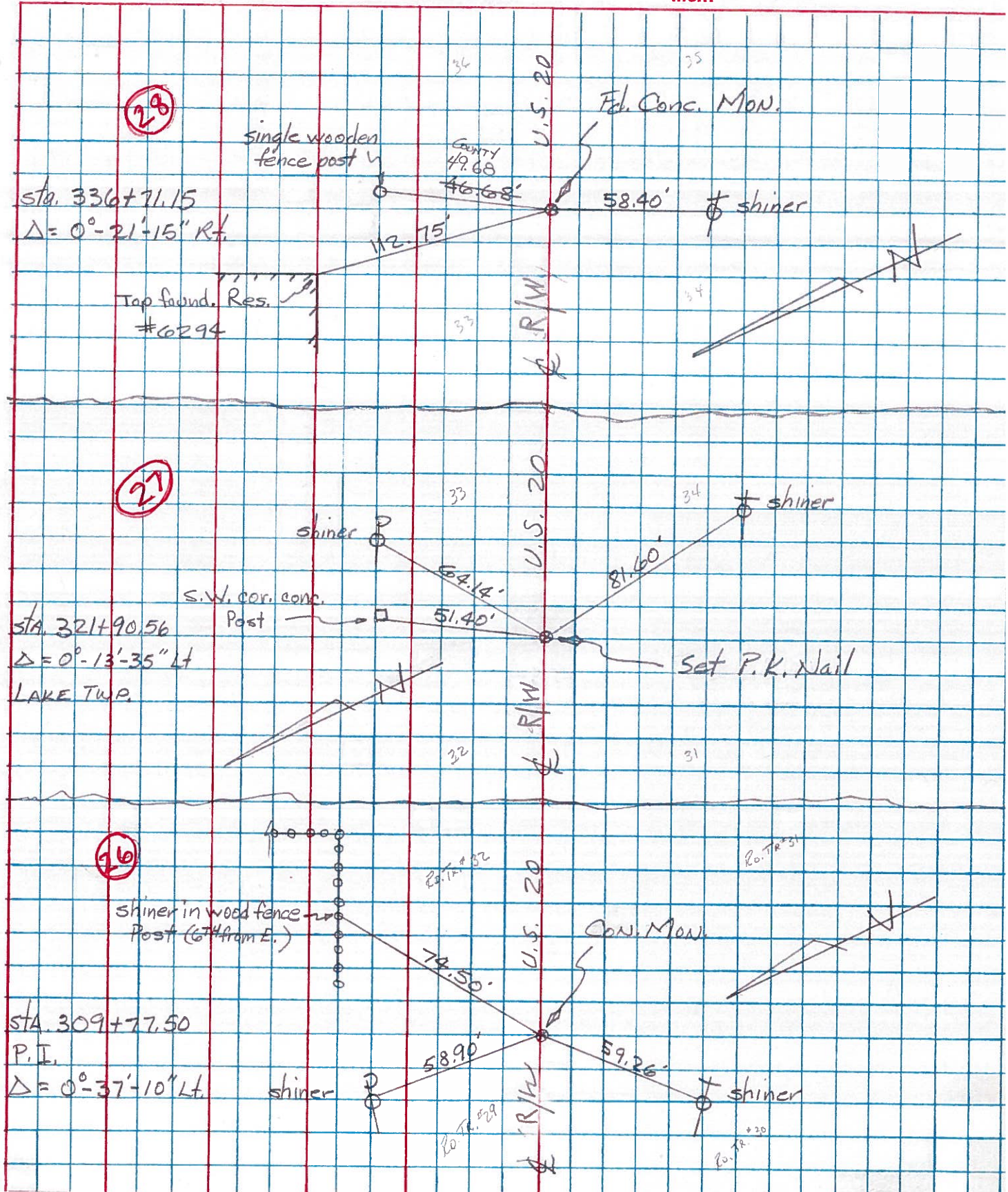
PERSONNEL	TITLE	PERSONNEL	TITLE	COUNTY	WOOD	DATE	Aug. 15 19
Tomsic		Gaucauz		S. R.	U. S. 20	Rechecked	Dec -23
Neuser				SEC.	LAKE & TROY TWP.	WEATHER	
Vanyo							
Granata							

DESCRIPTION R.F. Control Pts. (Use sta. on old 1948 plans SH. 275 - sec. C.)



PERSONNEL	TITLE	PERSONNEL	TITLE	COUNTY	WOOD	DATE	Aug. 15 1971
Tomsic		Gancarz		S. R.	U. S. 20	Rechecked	Dec - 23 -
Neuser				SEC.	LAKE & TROY TWP.	WEATHER	
Vanyo				TEMP.			
Granata							

DESCRIPTION REF. Control Pts. (Use sta. on old 1948 plans SH. 275 - sec. C.) JOB NO.



PERSONNEL	TITLE	PERSONNEL	TITLE	COUNTY	DATE
				<u>Wood</u>	
				S. R. <u>U.S. #70</u>	WEATHER
				SEC.	TEMP.

DESCRIPTION	LEFT	CENTER LINE	RIGHT	JOB NO.
Sta. 282+32.90 P.I. Δ = 0°-05' Lt. Conc. Mt. (24)	#346		X-cut on C.B. S.E. 81.0 Shiner in T.P. W. 80.0 Shiner in 15" maple N.W. 147.0 N. to N. edge of pavement 1.9	
Sta. 309+80.19 P.I. Δ = 0°-37' Lt. Conc. mt. (26)	#347		Shiner in T.P. S.W. 59.4 Shiner in P.P. N. 59.0 Shiner in 12" catalpa N.E. 55.0 N. to N. edge of pav't. 1.8	
Sta. 321+93.37 Fd. Conc. Mt. broken off 8" below surface (27)			Shiner in P.P. E. 66.0 Shiner in T.P. S.E. 81.6 N.E. to S.W. Cor. Conc. A.P. 51.4 1.30' N. of N. edge pave.	
Sta. 336+74.28 Δ = 0°-21' Rt. Conc. mt. (28)	#348		Boat spt. in 20" stump N.E. 64.0 Shiner in 24" stump N.W. 97.0 Shiner in T.P. S.W. 58.0 6.60' N. of N. edge pave.	
Sta. 350+63.30 Δ = 0°-2'-30" Rt. P.P. spike (30)	#349	(See pages 5-6)	N.E. Cor. Conc. porch S.W. 64.0 N.E. Cor. Conc. Fdn. Gas. Sta. S.W. 71.0 Shiner in 20" maple S.S.E. 73.0 N. to stone on R 68.0 S. to shiner in twin Ash 53.0	