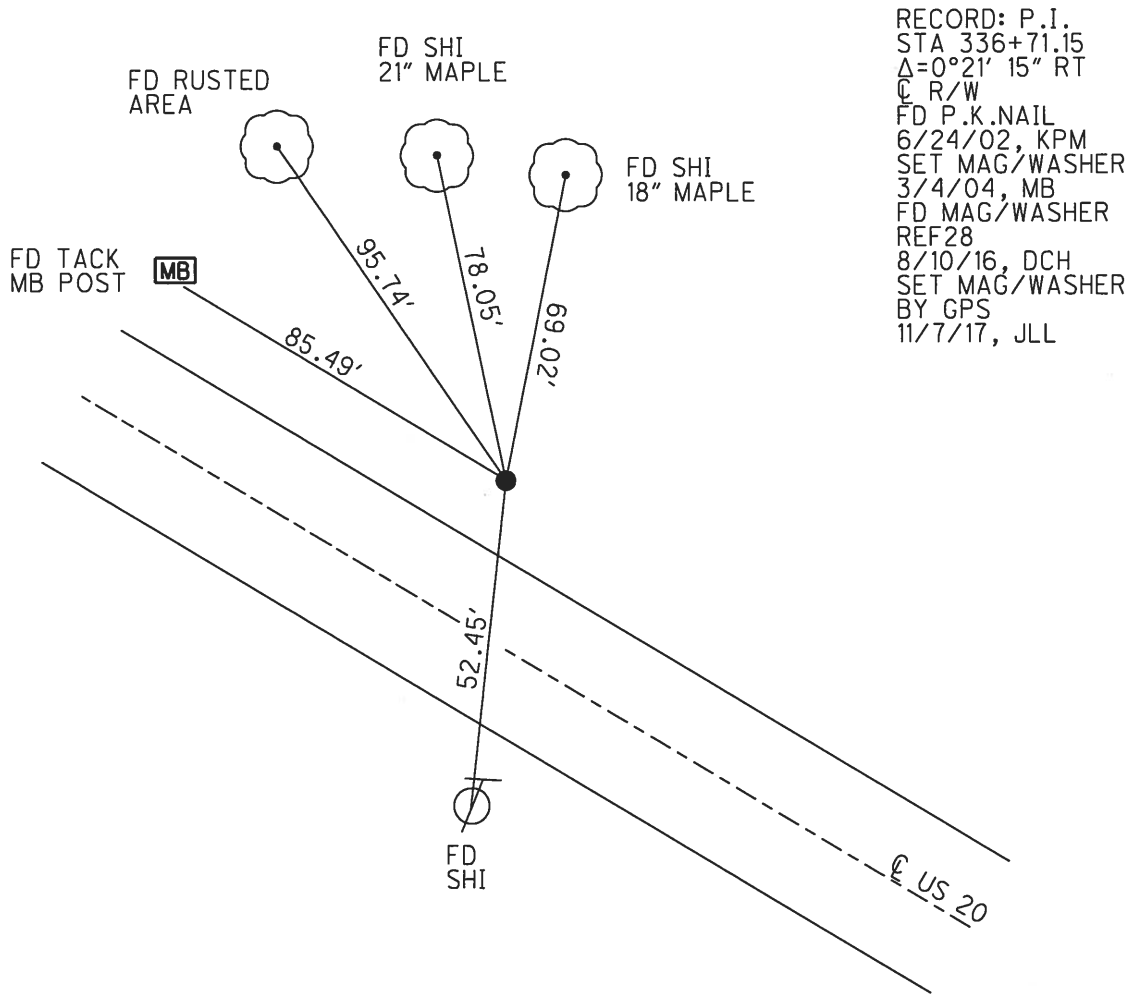
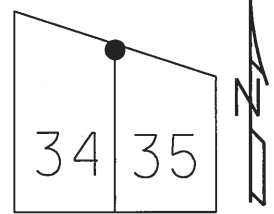


O.D.O.T. DISTRICT 2 SURVEY OFFICE (USE ONLY)

PERSONNEL _____ REFERENCE NO. 28 SHEET 7 OF 23
 NOTES LEU _____ DATE 8/10/16 ROUTE US 20
 H.C. HOMAN _____ WEATHER CLEAR COUNTY WOOD
 R.C. LEU _____ TEMP. 78° TOWNSHIP TROY
 _____ SECTION RT 34
 _____ T 6 N R 12 E

TYPE MONUMENT MAG/WASHER
 ON SURFACE - ~~BELOW~~ ON _____
 LEFT - ℄ PAV'T - ~~RIGHT~~ 12.7'
0.3' LT TO LT EDGE PAVEMENT
 S.L.M. 422+80
 GRID: NORTHING: 674586.667 EASTING: 1690162.505

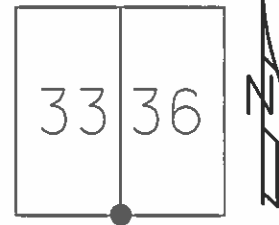


RECORD: P.I.
 STA 336+71.15
 $\Delta=0^{\circ}21' 15''$ RT
 ℄ R/W
 FD P.K.NAIL
 6/24/02, KPM
 SET MAG/WASHER
 3/4/04, MB
 FD MAG/WASHER
 REF28
 8/10/16, DCH
 SET MAG/WASHER
 BY GPS
 11/7/17, JLL

O.D.O.T. DISTRICT 2 SURVEY OFFICE (USE ONLY)

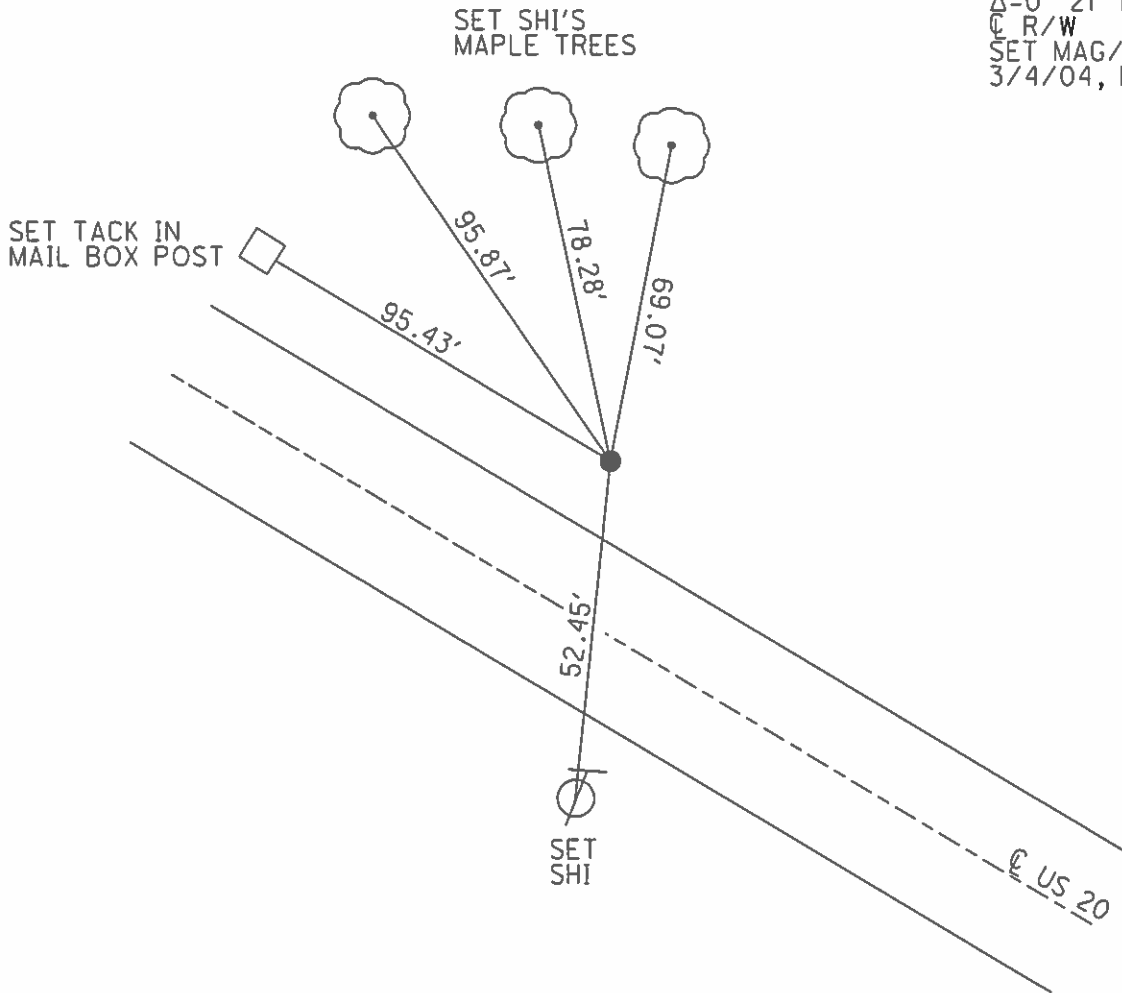
PERSONNEL _____ REFERENCE NO. 28 SHEET 7 OF 19
 NOTES MALINSKY DATE 6/24/02 ROUTE US 20
 H.C. MOSER WEATHER CLEAR COUNTY WOOD
 R.C. SIEFRING TEMP. 95° TOWNSHIP TROY
BEAUMONT SECTION RT 33
 T 6 N R 12 E

TYPE MONUMENT _____ P.K. NAIL _____
 ON SURFACE - ~~BELOW~~ ON _____
 LEFT - Q PAV'T - ~~RIGHT~~ 12.7' _____
0.3' LT TO LT EDGE PAVEMENT _____
 S.L.M. _____ 422+80 _____



GRID: NORTHING: _____ EASTING: _____

RECORD: P.I.
 STA 336+71.15
 $\Delta=0^{\circ} 21' 15''$ RT
 @ R/W
 SET MAG/WASHER
 3/4/04, MB



O.D.O.T. DISTRICT 2 SURVEY OFFICE

PERSONNEL _____

REFERENCE NO. 28

SHEET 10 OF 19

NOTES LOEHRKE

H.C. CURTIS

R.C. ROMETO

DATE 4-20-92

WEATHER Cloudy - Windy

TEMP. +60

ROUTE U.S. 20

COUNTY Wood

TOWNSHIP Troy

SECTION _____

T. _____ R. _____

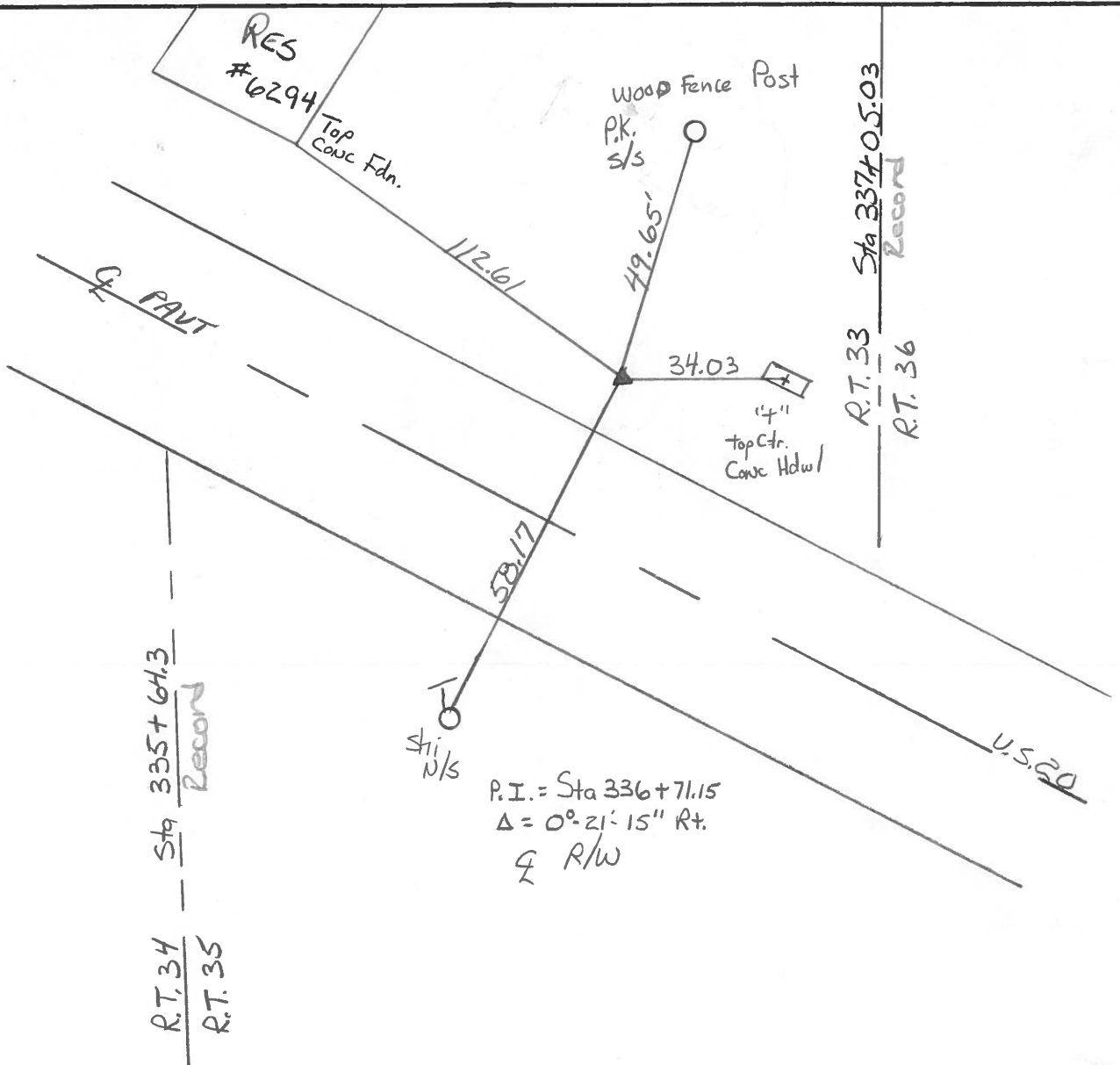
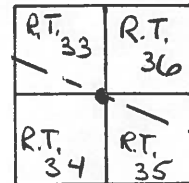
TYPE MONUMENT Conc Mon / IRON Rod

ON SURFACE - BELOW 4 1/2"

LEFT - PAV'T. - RIGHT 19.2'

6.6 ^{ft} to Left EDGE PAVEMENT

S.L.M. 422+80



P.I. = Sta 336+71.15
 $\Delta = 0^{\circ} 21' 15''$ Rt.
 & R/W

R.T. 34 — Sta 335+64.3
 R.T. 35 — Record

R.T. 33 — Sta 337+05.03
 R.T. 36 — Record

County Wood S.R. U.S. #20

Date 5/20/80 Drawn 5/27/80

Township Troy

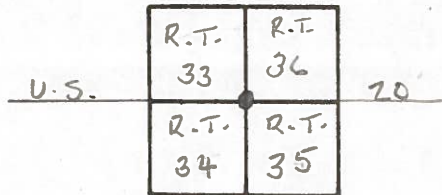
Weather sunny-windy

Section R.T. 33-34-35-36

Temp. 65°

T N, R E

Personnel CRONIN



RIPPLE

GEYMAN

MOSSER

BARBOUR

#28

R.T. 36
R.T. 33
STA. 337+05.03

P.I.

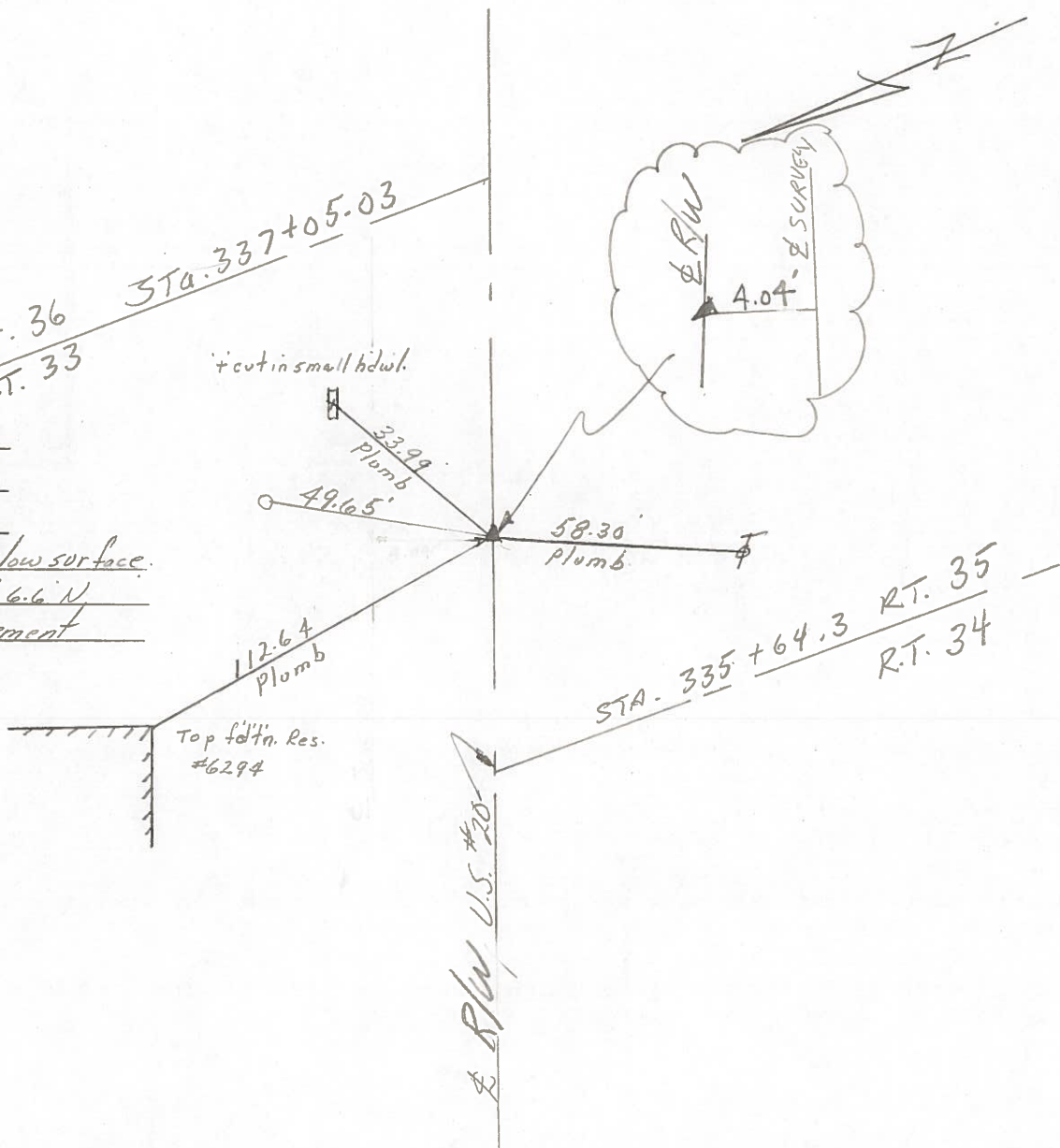
A = 00°21'15" Rt.

336+71.15

Ed. conc. mon. 2 1/2" below surface.

small nail in center & 6.6 N

of N. edge of pavement



Top of In. Res.
#6294

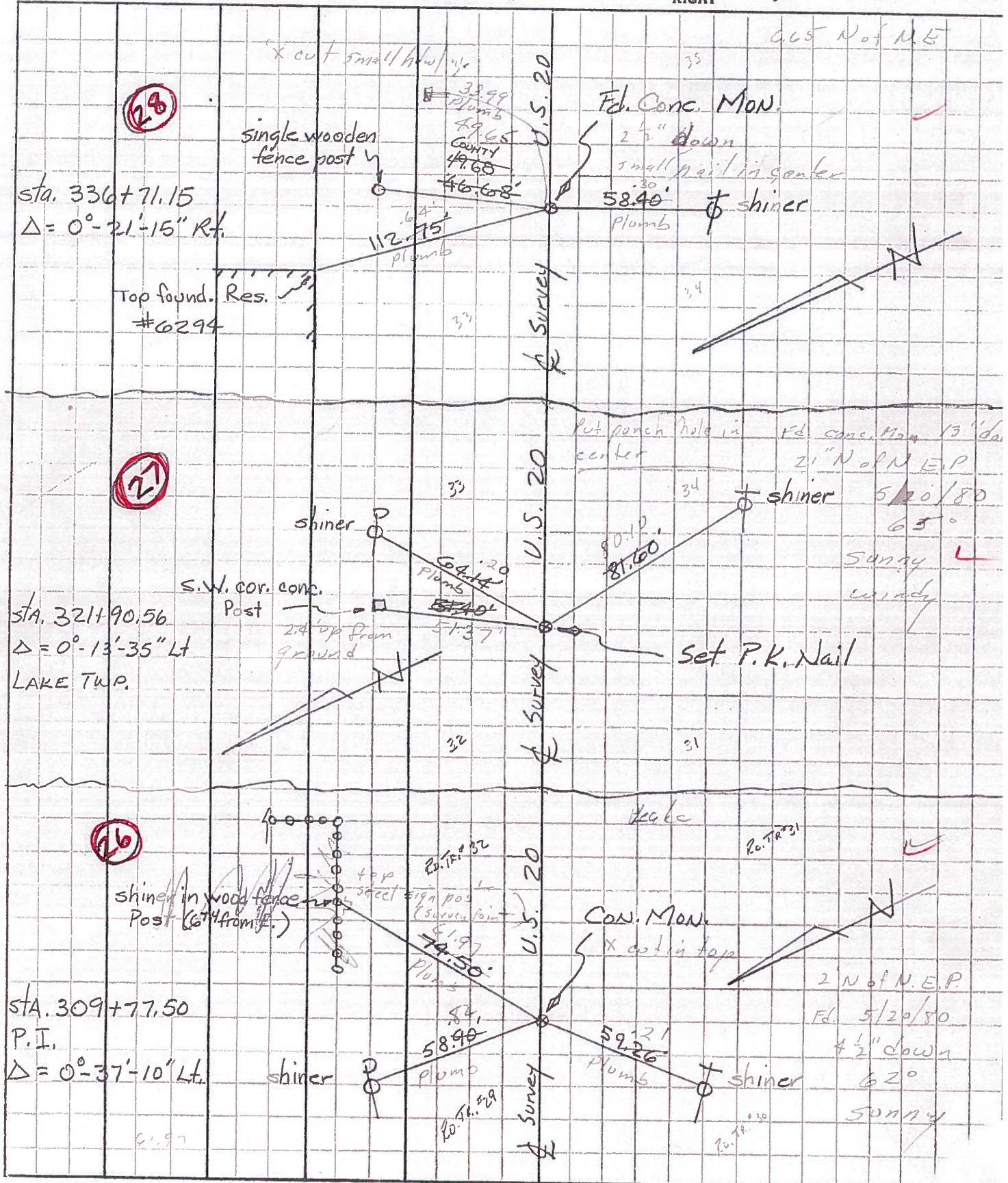
U.S. #20

STA. 335+64.3
R.T. 35
R.T. 34

112.64
Plumb

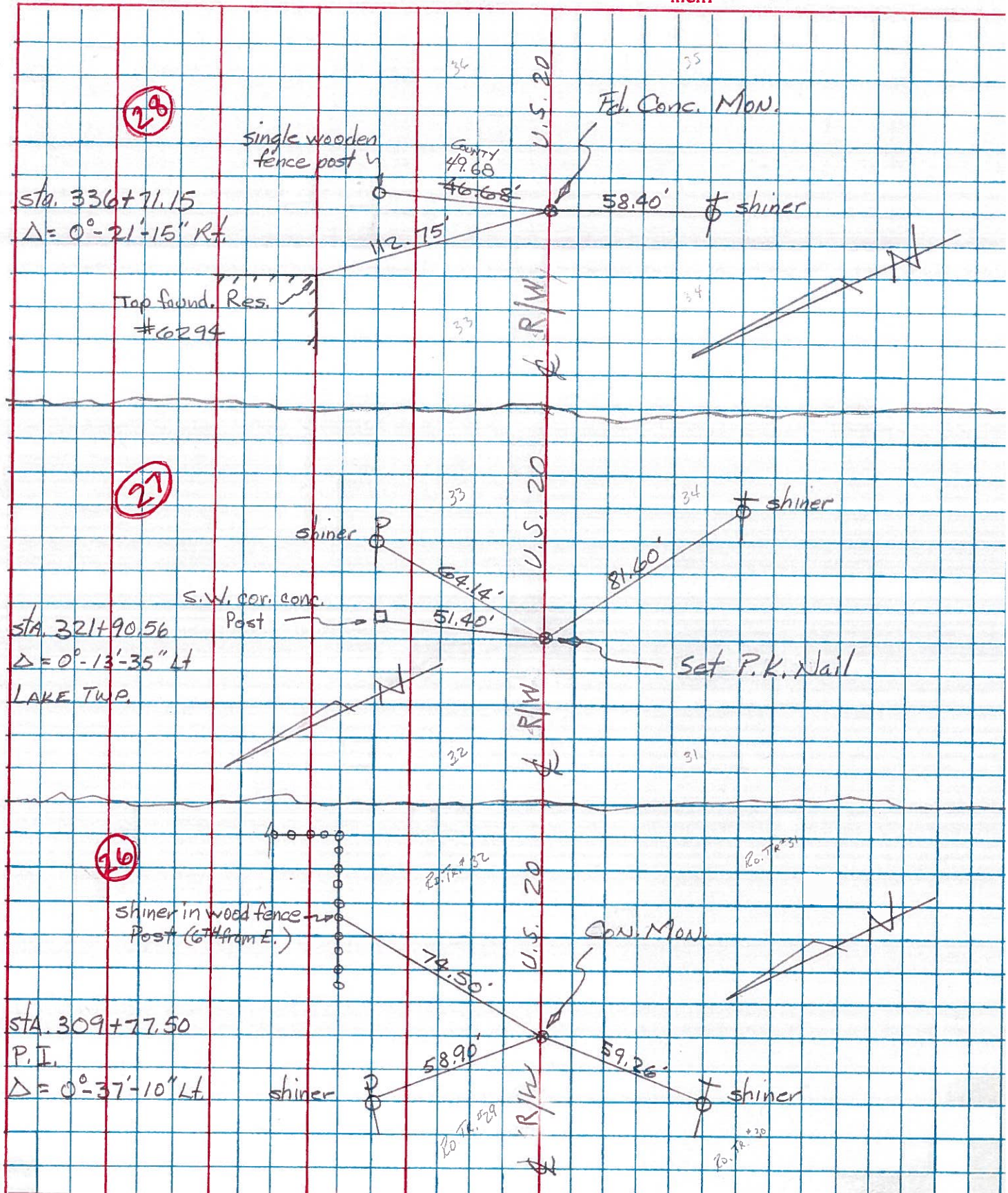
PERSONNEL	TITLE	PERSONNEL	TITLE	COUNTY	WOOD	DATE	Aug. 15 19:
Tomsic		Gancarz		S.R.	U.S. 20	Rechecked	Dec -23
Neuser				SEC.	LAKE & TROY TWP.	WEATHER	
Vanyo							
Granata							

DESCRIPTION REF. Control Pts. (Use sta. on old 1948 plans SH. 275 - sec. C.)



PERSONNEL	TITLE	PERSONNEL	TITLE	COUNTY	WOOD	DATE	Aug. 15 1971
Tomsic		Gancarz		S. R.	U. S. 20	Rechecked	Dec - 23 -
Neuser				SEC.	LAKE & TROY TWP.	WEATHER	
Vanyo				TEMP.			
Granata							

DESCRIPTION REF. Control Pts. (Use sta. on old 1948 plans SH. 275 - sec. C.)



PERSONNEL	TITLE	PERSONNEL	TITLE	COUNTY <u>Wood</u>	DATE
				S. R. <u>U.S. #70</u>	WEATHER
				SEC.	TEMP.

DESCRIPTION	LEFT	CENTER LINE	RIGHT	JOB NO.
Sta. 282+32.90 P.I. Δ = 0°-05' Lt. Conc. Mt. (24)	#346		X-cut on C.B. S.E. 81.0 Shiner in T.P. W. 80.0 Shiner in 15" maple N.W. 147.0 N. to N. edge of pavement 1.9	
Sta. 309+80.19 P.I. Δ = 0°-37' Lt. Conc. mt. (26)	#347		Shiner in T.P. S.W. 59.4 Shiner in P.P. N. 59.0 Shiner in 12" catalpa N.E. 55.0 N. to N. edge of pav't. 1.8	
Sta. 321+93.37 Fd. Conc. Mt. broken off 8" below surface (27)			Shiner in P.P. E. 66.0 Shiner in T.P. S.E. 81.6 N.E. to S.W. Cor. Conc. A.P. 51.4 1.30' N. of N. edge pave.	
Sta. 336+74.28 Δ = 0°-21' Rt. Conc. mt. (28)	#348		Boat spt. in 20" stump N.E. 64.0 Shiner in 24" stump N.W. 97.0 Shiner in T.P. S.W. 58.0 6.60' N. of N. edge pave.	
Sta. 350+62.30 Δ = 0°-21'-30" Rt. P.P. spike (30)	#349	(See pages 5-6)	N.E. Cor. Conc. perch S.W. 64.0 N.E. Cor. Conc. Fdn. Gas. Sta. S.W. 71.0 Shiner in 20" maple S.S.E. 73.0 N. to stone on fl 68.0 S. to shiner in twin Ash 53.0	