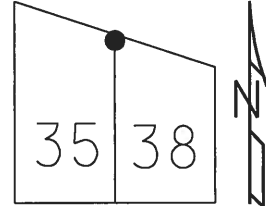


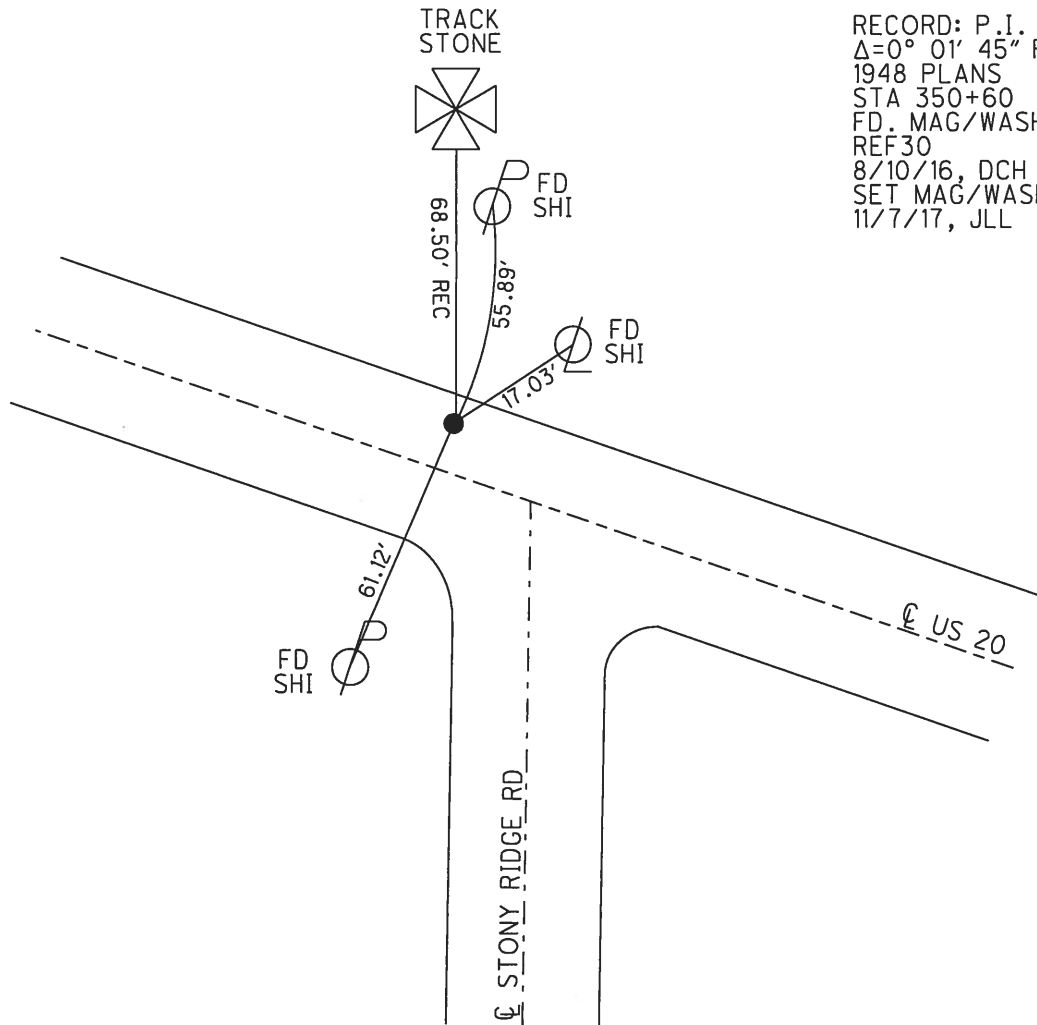
O.D.O.T. DISTRICT 2 SURVEY OFFICE (USE ONLY)

PERSONNEL	REFERENCE NO.	<u>30</u>	SHEET	<u>8</u>	OF	<u>23</u>
NOTES	LEU	DATE	<u>8/10/16</u>	ROUTE	<u>US 20</u>	
H.C.	<u>HOMAN</u>	WEATHER	<u>CLEAR</u>	COUNTY	<u>WOOD</u>	
R.C.	<u>LEU</u>	TEMP.	<u>78°</u>	TOWNSHIP	<u>TROY</u>	
				SECTION	<u>RT 35</u>	
					<u>T 6 N R 12 E</u>	

TYPE MONUMENT MAG/WASHER  
 ON SURFACE - ~~BELOW~~ ON  
 LEFT - ☉ PAV'T - ~~RIGHT~~ 6.6'  
5.5' TO LT EDGE PAVEMENT  
 S.L.M. 436+65.6



GRID: NORTHING: 673897.056 EASTING: 1691366.406

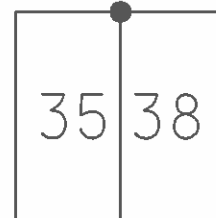


RECORD: P.I.  
 $\Delta=0^{\circ} 01' 45''$  RT.  
 1948 PLANS  
 STA 350+60  
 FD. MAG/WASHER  
 REF30  
 8/10/16, DCH  
 SET MAG/WASHER  
 11/7/17, JLL

O.D.O.T. DISTRICT 2 SURVEY OFFICE (USE ONLY)

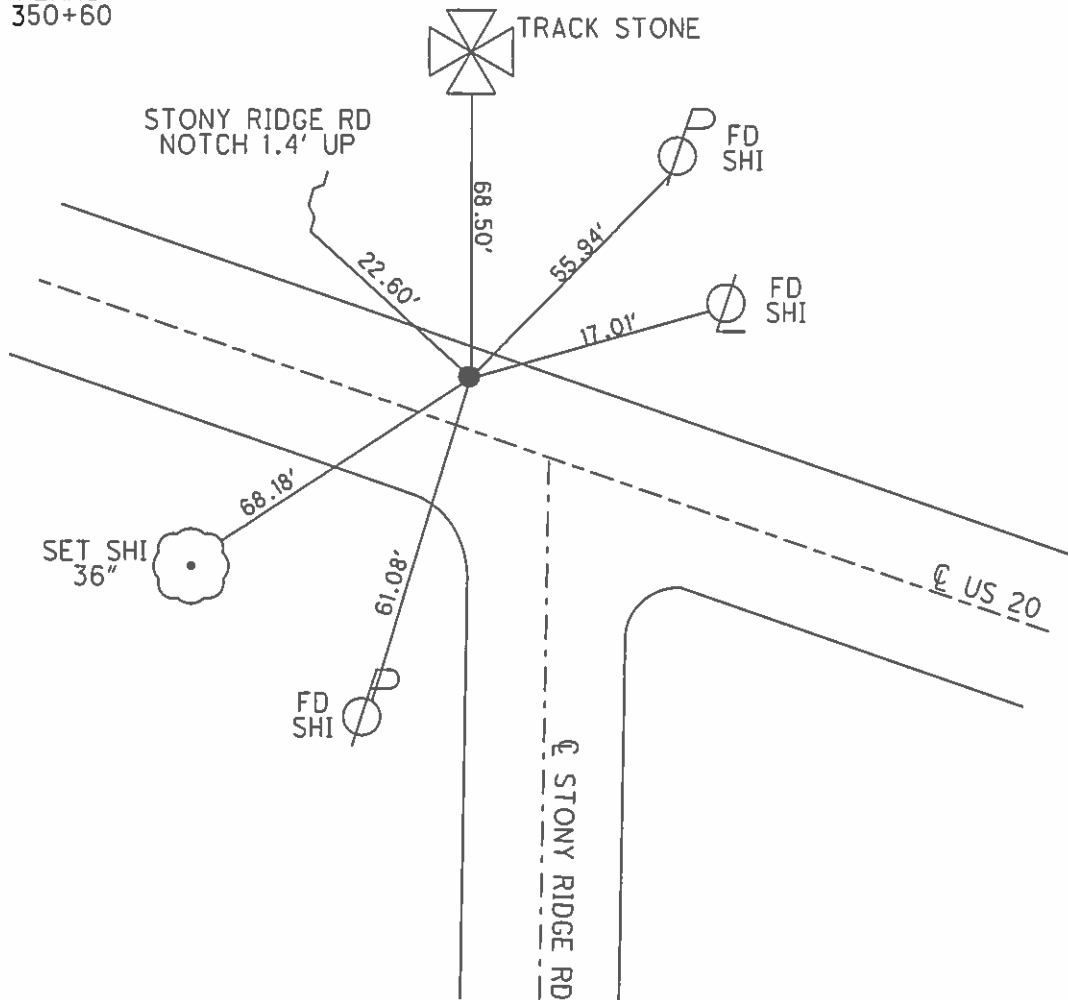
PERSONNEL	REFERENCE NO.	<u>30</u>	SHEET	<u>8</u>	OF	<u>19</u>
NOTES	MALINSKY	DATE	<u>6/24/02</u>	ROUTE	<u>US 20</u>	
H.C.	MOSER	WEATHER	<u>CLEAR</u>	COUNTY	<u>WOOD</u>	
R.C.	SIEFRING	TEMP.	<u>95°</u>	TOWNSHIP	<u>TROY</u>	
	BEAUMONT			SECTION	<u>RT 35</u>	
				T	<u>6</u>	R
				N	<u>12</u>	E

TYPE MONUMENT \_\_\_\_\_ P.K./WASHER \_\_\_\_\_  
 ON SURFACE - ~~BELOW~~ ON \_\_\_\_\_  
 LEFT - Q PAV'T - ~~RIGHT~~ 6.6' \_\_\_\_\_  
5.5' TO LT EDGE PAVEMENT \_\_\_\_\_  
 S.L.M. \_\_\_\_\_ 436+65.6 \_\_\_\_\_



GRID: NORTHING: \_\_\_\_\_ EASTING: \_\_\_\_\_

RECORD: P.I.  
 $\Delta=0^{\circ} 01' 45''$  RT.  
 1948 PLANS  
 STA 350+60



# O.D.O.T. DISTRICT 2 SURVEY OFFICE

PERSONNEL \_\_\_\_\_

REFERENCE NO. 30

SHEET 11 OF 19

NOTES LOEHRKE

H.C. CURTIS

R.C. Romeo

DATE 5-13-92

WEATHER Cloudy

TEMP. +68

ROUTE U.S. 20

COUNTY Wood

TOWNSHIP Troy

SECTION \_\_\_\_\_

T. \_\_\_\_\_ R. \_\_\_\_\_

TYPE MONUMENT P.K. / WASHER

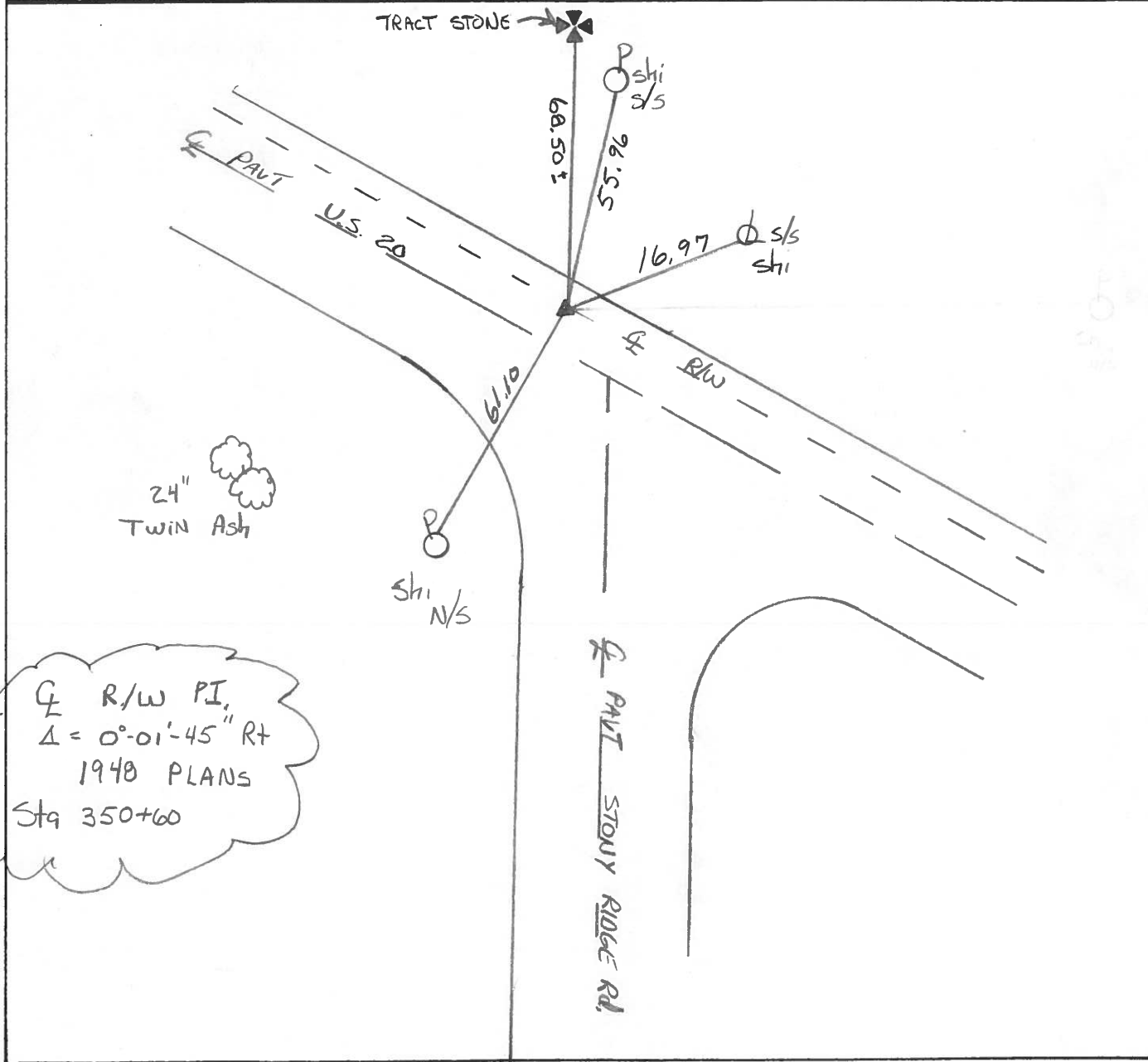
ON SURFACE - BELOW yes

LEFT - PAV'T. - RIGHT 4.8'

6.0 TO LT EDGE PAVEMENT

S.L.M. 436+70

R.T. 36	R.T. 37
R.T. 35	R.T. 38



R/W PI,  
 $\Delta = 0^{\circ}01'45''$  RT  
 1948 PLANS  
 Sta 350+60

County Wood S.R., U.S. # 20

Date 5/20/80 Drawn 5/27/80

Township Troy

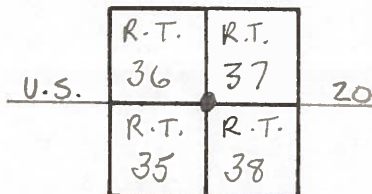
Weather sunny - windy

Section R.T. - 35 - 36 - 37 - 38

Temp. 65

T N, R E

Personnel CRONIN  
RIPPLE  
GEYMAN  
MOSSER  
BARBOUR



# 30

± R/W  
 Δ = 0°-01'-45" Rt. 1948 PLANS

350+60

Fd. P.K. 1 1/4" below surface ±  
6.5' Not ± of pavement.

R.T. 37  
 R.T. 36

\* Tract stone

56.04  
 68.50 ±

16.96'

53.86'

⊙ twin ash

R.T. 38  
 R.T. 35

± R/W U.S. # 20 P



PERSONNEL	TITLE	PERSONNEL	TITLE	COUNTY	DATE
				<u>Wood</u>	
				S. R. <u>U.S. #70</u>	WEATHER
				SEC.	TEMP.

DESCRIPTION \_\_\_\_\_ LEFT \_\_\_\_\_ CENTER LINE \_\_\_\_\_ RIGHT \_\_\_\_\_ JOB NO. \_\_\_\_\_

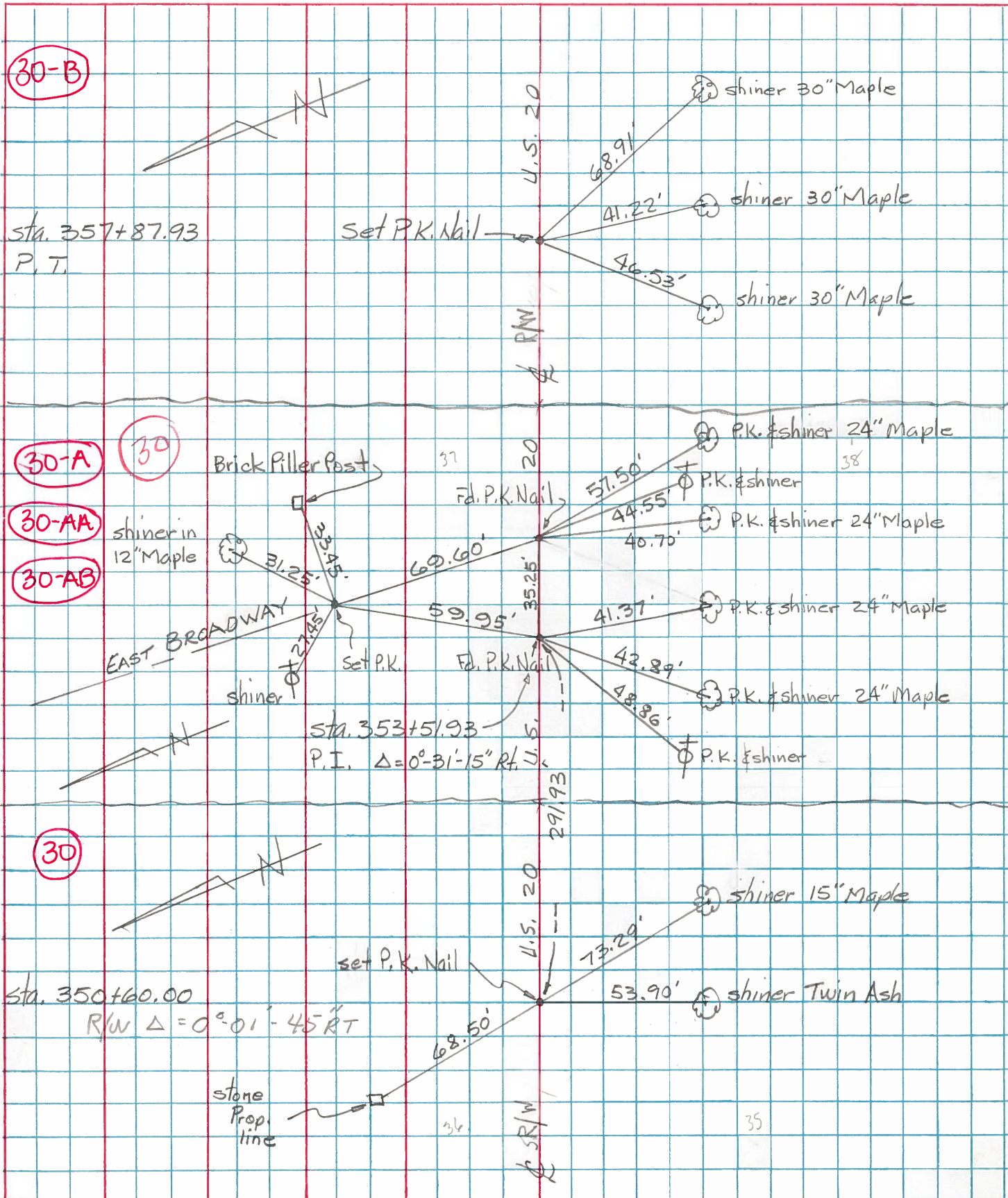
<p>Sta. 282+38.90 P.I. Δ = 0°-05' Lt. Conc. Mt. <b>(24)</b> #346</p>	<p>X-cut on C.B. S.E. 81.0 Shiner in T.P. W. 80.0 Shiner in 15" maple N.W. 147.0 N. to N. edge of pavement 1.9</p>
<p>Sta. 309+80.19 P.I. Δ = 0°-37' Lt. Conc. mt. <b>(26)</b> #347</p>	<p>Shiner in T.P. S.W. 59.4 Shiner in P.P. N. 59.0 Shiner in 12" catalpa N.E. 55.0 N. to N. edge of pav't. 1.8</p>
<p>Sta. 321+93.37 Fd. Conc. Mt. broken off 8" below surface <b>(27)</b></p>	<p>Shiner in P.P. E. 66.1 Shiner in T.P. S.E. 81.6 N.E. to S.W. Cor. Conc. A.P. 51.4 1.30' N. of N. edge pave.</p>
<p>Sta. 336+74.28 Δ = 0°-21' Rt. Conc. mt. <b>(28)</b> #348</p>	<p>Boat spk. in 20" stump N.E. 64.0 Shiner in 24" stump N.W. 97.0 Shiner in T.P. S.W. 58.0 6.60' N. of N. edge pave.</p>
<p>Sta. 350+63.30 Δ = 0°-21'-30" Rt. P.P. spike <b>(30)</b> #349</p>	<p>(See pages <u>5-6</u>) N.E. Cor. Conc. perch S.W. 64.0 N.E. Cor. Conc. Fdn. Gas. Sta. S.W. 71.0 Shiner in 20" maple S.S.E. 73.0 N. to stone on R. 68.0 S. to Shiner in twin Ash 53.0</p>



PERSONNEL	TITLE	PERSONNEL	TITLE
Tomsic		Gancarz	
Neuser			
Vanyo			
Granata			

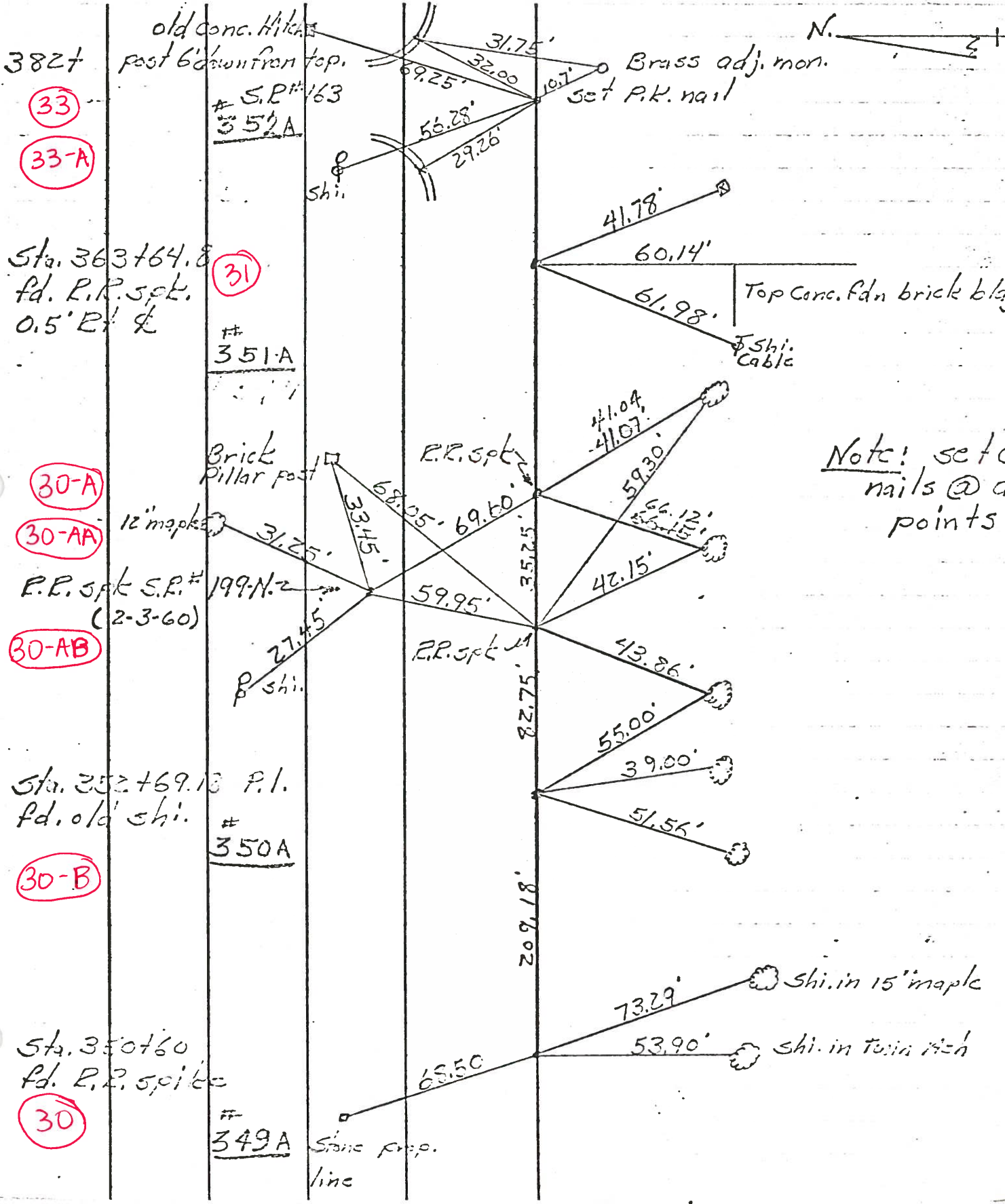
COUNTY Wood DATE Aug. 15, 1972  
 S. R. U.S. 20 Rechecked - Dec-23  
 SEC. \_\_\_\_\_ WEATHER \_\_\_\_\_  
 TEMP. \_\_\_\_\_

DESCRIPTION REF. Control Pts. JOB NO. \_\_\_\_\_



PERSONNEL	TITLE	PERSONNEL	TITLE	COUNTY	DATE
				Wood	3-20-53
				S. R. 11.5#20	WEATHER
				SEC.	TEMP.

DESCRIPTION Stony Ridge JOB NO. \_\_\_\_\_



Note! set nails @ points